

# RED LIGHTNING 2019

## FLIGHT OPS INSTRUCTION

# ARRIVAL BRIEF & AIRFIELD INFORMATION

(REF : RED THUNDER ARRIVAL BRIEF & AIRFIELD INFORMATION V1.0 May 2019)



## Cowra, Werribee & Grenfell Airfields

**TABLE OF CONTENTS**

ARRIVAL BRIEF & AIRFIELD INFORMATION.....3  
 RED THUNDER ARRIVALS.....3  
     Supervision of Operations.....3  
     Red Lightning OPS Induction Brief.....3  
     De-Confliction and Initial & Pitch Procedures.....3  
     YCWR Operating Areas and Frequencies.....3  
 INITIAL & PITCH PROCEDURES.....4  
     Initial & Pitch RT Procedures.....5  
 COWRA AIRFIELD (YCWR).....5  
     Airfield Ops.....5  
     Fuel (Avgas).....5  
     Airfield Parking.....6  
     Airfield Food and Transport.....7  
     YCWR AREA MAP.....9  
 COWRA (YCWR) - AIRFIELD INFORMATION.....9  
     General.....10  
 WERRIBEE (YWEB) - AIRFIELD INFORMATION.....11  
     General.....11  
 GRENFELL (YGNF) - AIRFIELD INFORMATION.....11  
     General.....11

Management	Person Responsible
RED LIGHTNING Organisers	RED LIGHTNING Air-Boss

Amendment Version	Release Date	Key Changes
V1.0	OCT 2019	Initial-Issue

# RED LIGHTNING

## ARRIVAL BRIEF & AIRFIELD INFORMATION

Komrades welcome to the RED LIGHTNING !!

RED AIR SOUTHERN FORCES trust you will have an enjoyable stay, but most importantly, a safe and rewarding flying experience worthy of remembrance!!

Red Lightning events are generally a 7-day event occurring from Monday to Sunday of the 2<sup>nd</sup> last week of Oct each year. Please refer to the web at [www.redradials.com.au](http://www.redradials.com.au) for actual published dates for each year's event. Participants generally arrive on the Monday/ Tuesday of the event week, departing home on the morning of the final Sunday.

Please find enclosed arrival and airfield information relevant to your flying operations. This brief has been tailored around operations at the Cowra Airfield (YCWR) and the various local airfields of Werribee and Grenfell. Red Lightning events may occur at other airfields but will adhere to the general principles laid out here.

*Red Radials (Southern Chapter) Pty Ltd, trading as "Red Lightning", is the organising entity for this event.*

## RED LIGHTNING ARRIVALS

### Supervision of Operations

Day operations and activities at Red Lightning are supervised via the Flying Program. The programmer is an experienced Pilot qualified to supervise flight operations and appropriately match Aircraft, Pilots, and Flying Tasks.

Note: Red Lightning adopts a **NOT ON THE PROGRAM, NO FLY POLICY**. This allows a supervisory opportunity to ensure appropriate airspace, task mixing, and briefing opportunity is considered.

### Red Lightning OPS Induction Brief

Prior to participating in Red Lightning flying activities all players are required to attend a **Red Lightning Ops Induction Brief**. Briefings are generally held over the first few days and are published on the web within the event schedule.

### De-Confliction and Initial & Pitch Procedures

With a large number of Warbirds operating at Red Lightning events, participants should refer to the general De-Confliction and Initial & Pitch Procedures detailed in the seperate Watts Bridge Arrivals Mass Brief available from [www.redthundertfc.com.au](http://www.redthundertfc.com.au)

### YCWR Operating Areas and Frequencies

The Operating Areas and Frequencies are detailed DURING THE OPS Induction Brief on arrival.

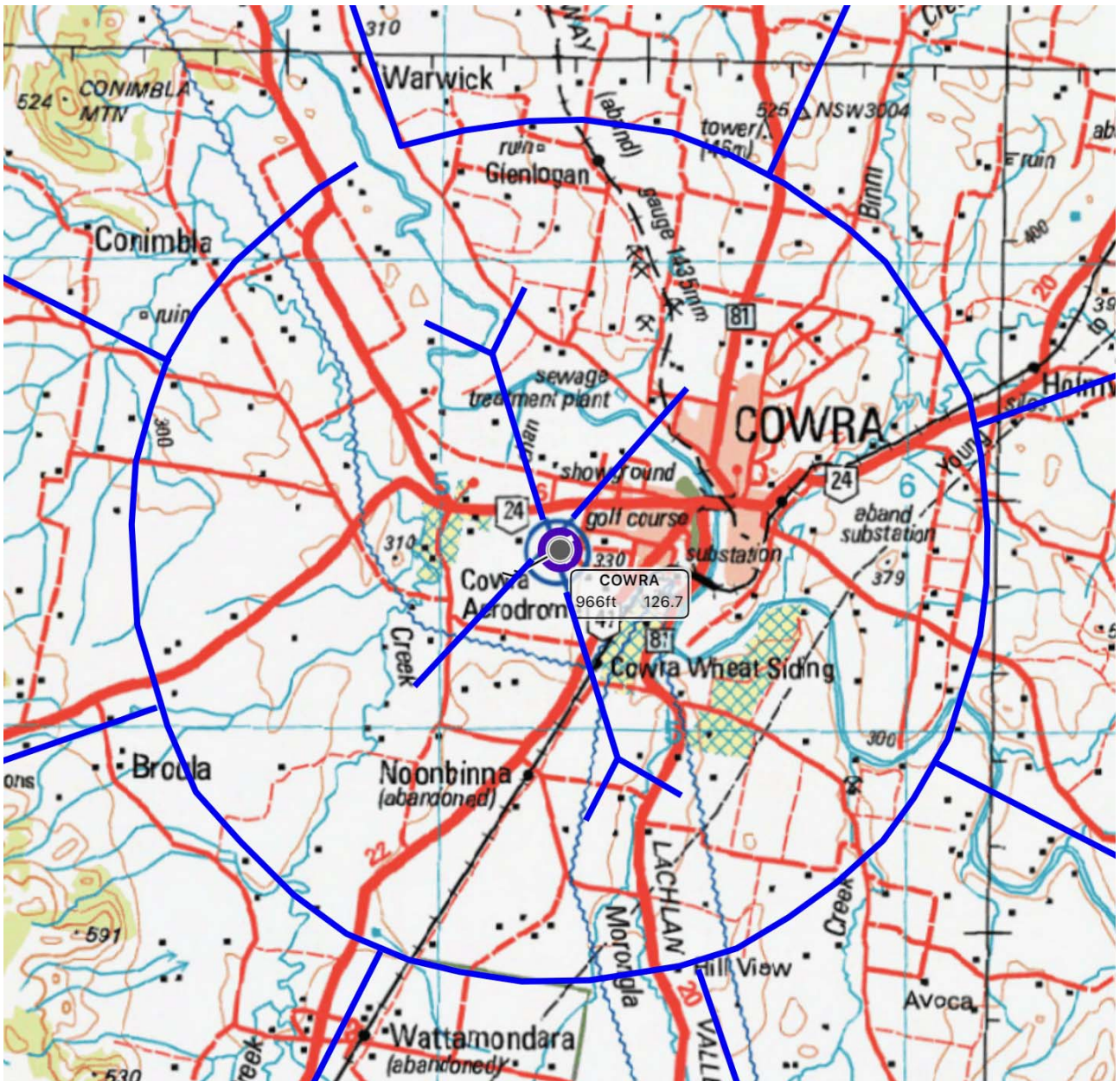
The following frequencies will be used during the week and will be referred to as:

- Stud 1 126.7                      Cowra CTAF
- Stud 2 119.85                    RR Common
- Stud 3 120.85
- Stud 4 125.15
- Stud 5 127.9
- Stud 6 129.1

## INITIAL & PITCH PROCEDURES

Red Lightning participants are to join the circuit at event airfields using Initial & Pitch Procedures (ENR 1.1-87 refers). Initial Points (IP) are established at approximately 2nm from the respective landing threshold. Red Lightning Aircraft are to join via the respective R/W Initial Point (IP) at 1000ft AGL or via a Low Initial at 500ft AGL. Aircraft should join via a Left, Right or Straight Initial, running in on 'dead side' for a 5 second pitch spacing.

Figure 2 below details the Initial points at YCWR.





## Initial & Pitch RT Procedures

Given that our operations may conflict with other (non-Red Lightning) operations, the following RT procedures should be adopted (example given is for the YCWR);

### At Left or Right Initial call;

- "Cowra Traffic Cossacks are Left (Right) Initial R/W 15(33) 1000 or Low Left (Right) Initial R/W 15(33) 500"

### At IP RW 15 (33) call;

- "Cowra Traffic Cossacks are 2nm N (S) Joining Dead-Side RW 15 (33) 1000 (500)

### During the Pitch, call in sequence;

- During the Pitch, lead only; "Cowra Traffic, Cossacks are crosswind full stop (touch and go) runway 15 (33)"

### During the Base Turn call in sequence;

- " Cowra Traffic Cossack 1 (2,3,4) Base 3 Greens, full-stop (touch and go) RW 15 (33)

### After landing, Last aircraft in the formation;

- After landing, last aircraft calls "Cossack 4 clear (for backtrack) or Cossacks Clear R/W 33.
- Lead: Normal CTAF/ Uncontrolled airfield RT

## COWRA AIRFIELD (YCWR)

### Airfield Ops

The Cowra RFS have kindly allowed us to use their building over the period (refer below).

### Fuel (Avgas)

Avgas Fuelling Facilities are available from a tanker "in the lines". The following procedure has been agreed by the fuel provider, Fly Oz (the flying school):

Anyone wishing to purchase fuel from Fly Oz, will need to register with them prior to receiving any fuel.

- Only one registration per aircraft is needed and will require the following details:
  - Aircraft call sign
  - Name/Business Name
  - Physical address
  - Email address
  - Telephone number (mobile and landline)
  - Credit Card details as security
  - Names of all pilots associated with the aircraft.
- The owner/person responsible, will be required to be with the aircraft whilst it is being refuelled, unless prior arrangements with Fly Oz have been made.
- All fuel provided will also require a docket to be signed at completion of the refuel by the owner/person responsible for the aircraft, unless prior arrangements with Fly Oz have been made.

So, you will need to register by visiting Fly Oz on arrival.  
Refuels can be requested by phone (0427 345056).

A self service bowser (Visa, MC) is also available near the aircraft parking area.

There is no fuel at the Werribee, Canowindra and Grenfell.

### **Airfield Parking**

Parking is planned to be between the taxiways. Refer to the image below.

The hardstand in front of the old flying school building will, hopefully, remain clear for run-ups.

There could be a large number of aircraft, so a more detailed parking plan may be devised when we have boots on the ground. On arrival, please follow the directions of people who look like they know what they are doing.

For aircraft maintenance issues/needs, space can be arranged in the hangars east of the club house. Please provide your own tie-down equipment.



## **Gear Stowage**

The hangar immediately north of the RFS building should be available to store gear. It could get crowded in the RFS Ops area if unnecessary stuff is left there.

## **Taxying**

A one way taxying system will be used for our operations around the parking areas. This will be dependant on the runway in use: Clockwise for 33 and counter-clockwise for 15. After landing take the second taxiway to vacate the runway. When taxying for departure use the runway entrance closest to the landing threshold.

## **Air**

Air will be available.

## **Oil**

Tim Reid at Fred Fahey Aerial Services will be supplying oil.

The following types and sizes will be available:

Aeroshell W100, quart

Aeroshell W120, 5 litre

Phillips X/C 25W-60, quart.

You can run an account for each aircraft, to be settled before departure. He would prefer cash, but other payment options may be available. These may not include credit card.

## **Breakfast & Lunch**

Cowra Rotary will be catering breakfast and lunch at the airfield.

Breakfast will be from 0730, so if you need something prior to that it is up to you.

Please advise any dietary requirements.

## **After Flying**

Socialising after flying will be at the RFS building..

## **Dinner**

The following evening meals/activities are planned:

Saturday: Lachlan Valley Hotel (LVH)

Sunday: TBA

Monday: TBA

Tuesday: Red Radial dinner, Crimean resort wear (Hawaiian shirts).

Wednesday TBA

Thursday: LVH, Red Radial Dining-In, Big hat uniforms.

## **Costs**

Costs will be levied on the following basis:

CASA approvals and other flying related costs: Shared by participating pilots.

Facilities and transport: Shared by participants.

Breakfast, lunch and non-alcoholic drinks: Shared by participants.

Beer and wine at the airfield: Shared by those consuming.

Evening meals: Individual payment (collected in advance, if appropriate).



## Photos

There may be a number of photographers attending the week.  
If you want to avail yourself of their images, bring along a memory stick.

## Transport

Cowra Rotary will be supplying a bus to and from town.  
There will be transport on the Saturday afternoon and Friday morning.



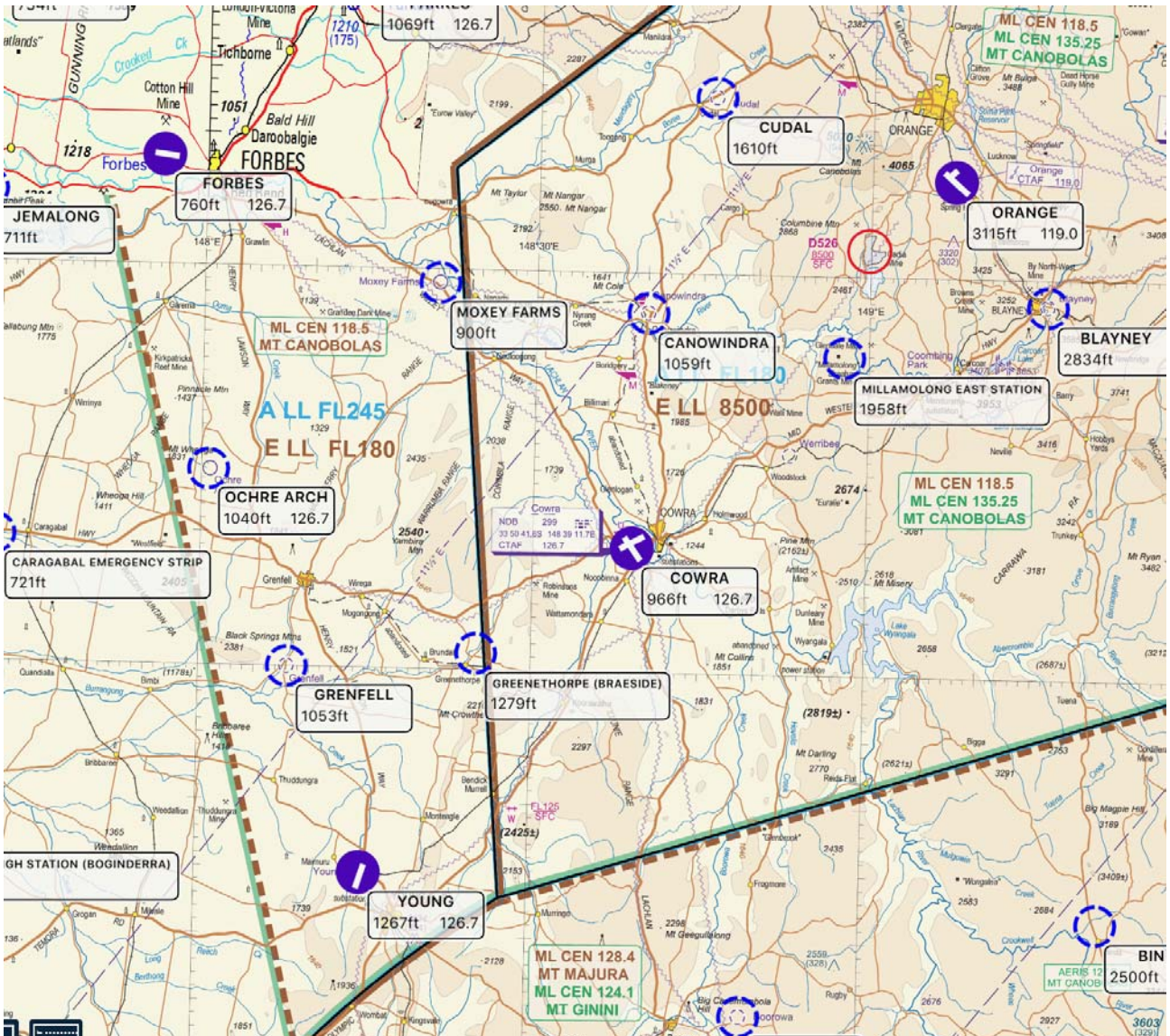
Cowra Airfield is located approximately;

- 1nm West of the town of Cowra
- 14nm South West of Werribee Airfield,
- 25nm East of Grenfell Airfield.

Note – Canowindra (YCWW) is closed and unavailable as an emergency alternate



YCWR AREA MAP



COWRA (YCWR) - AIRFIELD INFORMATION

General

Cowra has a bitumen runway 15/33 and a well formed grass runway 03/21 suitable for most types of recreational and warbird aircraft. All runways will easily handle YAK52 / Nanchang CJ6 operations. There are regular flight training movements at all times.

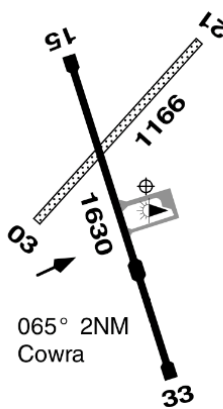
There are no specific Noise Sensitive areas. However, overflight of the Cowra Town should be limited.

To assist traffic separation at Cowra during RED LIGHTNING 2019, Red Lightning aircraft operations into Cowra will be conducted via De-Confliction and the Initial & Pitch procedures (ENR 1.1-87 refers) as detailed / varied below, when within 5nm of YCWR.

**COWRA**

**ELEV 973**

**AVFAX CODE 2134**



NSW  
 335041S 1483856E UTC +10 YCWR  
 VAR 12 DEG E CERT  
 AD OPR Cowra Shire Council, Private Bag 342, Cowra, NSW, 2794.  
 ARO 0429 987 615. Council PH 02 6340 2000(ADMIN). Fax 6340 2011.

**REMARKS**

- AD Charges: Nil.
- OPS in VIS less than 800M not supported.

**HANDLING SERVICES AND FACILITIES**

AVGAS and JET A1 AVBL 24H. Self-service terminal accepts VISA & MC.  
 Phone BH 02 6341 1616, AH 6342 9256, 0428 637 253.

**AERODROME OBSTACLES**

Telstra TWR 1,463FT AMSL, 080DEG MAG/2.6NM FM ARP  
 (334944.40S 1484149.20E).

**METEOROLOGICAL INFORMATION PROVIDED**

- METAR/SPECI.
- AWIS PH 02 9353 6417 - Report faults to BoM.
- AWIS FREQ 133.625 (requires one-second pulse to activate) - Report faults to AD OPR.

**PHYSICAL CHARACTERISTICS**

03/21	030	38c	Unrated. Grassed red clay.	WID 30	RWS 80
15/33	150	53a	PCN 10 /F /B /580 (84PSI) /U	WID 30	RWS 90

**AERODROME AND APPROACH LIGHTING**

RWY 15/33 LIRL(1) PAL+AFRU 126.7  
 (1) PAL+AFRU requires three one-second pulses to activate (See INTRO para 23.5).  
 RWY edge light spacing: 15/33: 90M.

**OTHER LIGHTING**

TWY LGT: Blue edge.

**ATS COMMUNICATIONS FACILITIES**

FIA MELBOURNE CENTRE 135.25 On ground

**RADIO NAVIGATION AND LANDING AIDS**

NDB CWR 299 335041.6S 1483911.7E Range 110 (HN 70) (1)  
 (1) Pilot monitored.

**CTAF - AFRU 126.7**

**ADDITIONAL INFORMATION**

Model ACFT OPR WI 500M RAD of PSN 333806.00S 1483824.00E BRG 347 MAG 12.6NM FM  
 Cowra AD (YCWR) SFC to 2,000FT AGL.

**CHARTS RELATED TO THE AERODROME**

- WAC 3456, 3457.
- Also refer to AIP Departure & Approach Procedures.

## WERRIBEE (YWEB) - AIRFIELD INFORMATION

### General

Werribee is located approximately 14nm East of Cowra. Werribee Airfield features two dirt runways suitable for an emergency alternate for area operations. The current condition of this ALA is not known at present.

### AIRFIELD LOCATION

Lat / Long: S 33 43.5 E 148 53.0  
ELEV 1947 ft.

### AIRFIELD RUNWAYS

RWY 02/20 : 837m  
RWY 12/30 : 547m

### RADIO FREQUENCIES

None stated in documents.  
ML CTR 135.25

## GRENFELL - AIRFIELD INFORMATION

This information is supplied for general reference only. Grenfell is a private strip located 25nm West of Cowra and offers a good emergency landing area if required.

### General

The Grenfell Airfield features a grass/dirt landing area. Runway length is 900m being suitable for several light aircraft types including YAK 52, Nanchang CJ6, and YAK18 types. (See below for Runway Details)

### AIRFIELD LOCATION

Lat / Long: S 33 52 16.6 E 148 03 23.5  
This is different from OZ RWYS/AVPLAN position. New position verified in 2019 by helicopter ops.  
Located 5nm west of Grenfell Township.  
ELEV Approx 1030ft.

### AIRFIELD RUNWAYS

From a Google inspection of the strip ;

Runway Orientation : 18/36  
Length Approximately . 900m

### RADIO FREQUENCIES

CTAF None  
ML CTR 135.25 at altitude.



