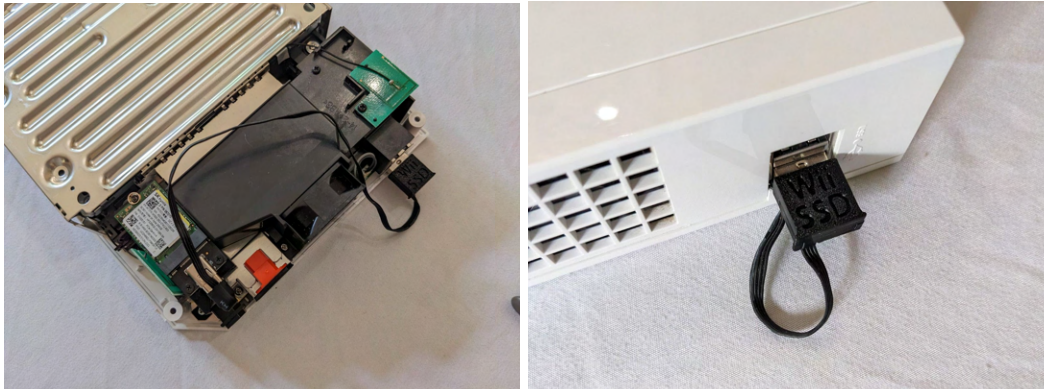


NVMe2Wii

Installation Guide

By The Peaceful Outcome



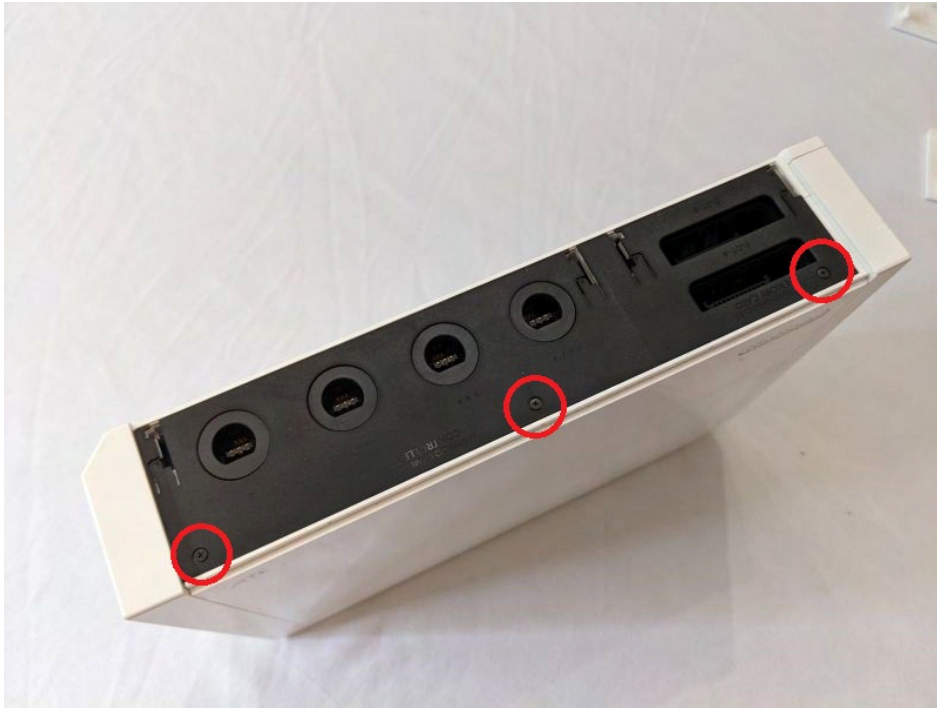
Tools Required:

- Tri-wing screwdriver
- #2 phillips screwdriver
- Hobby knife

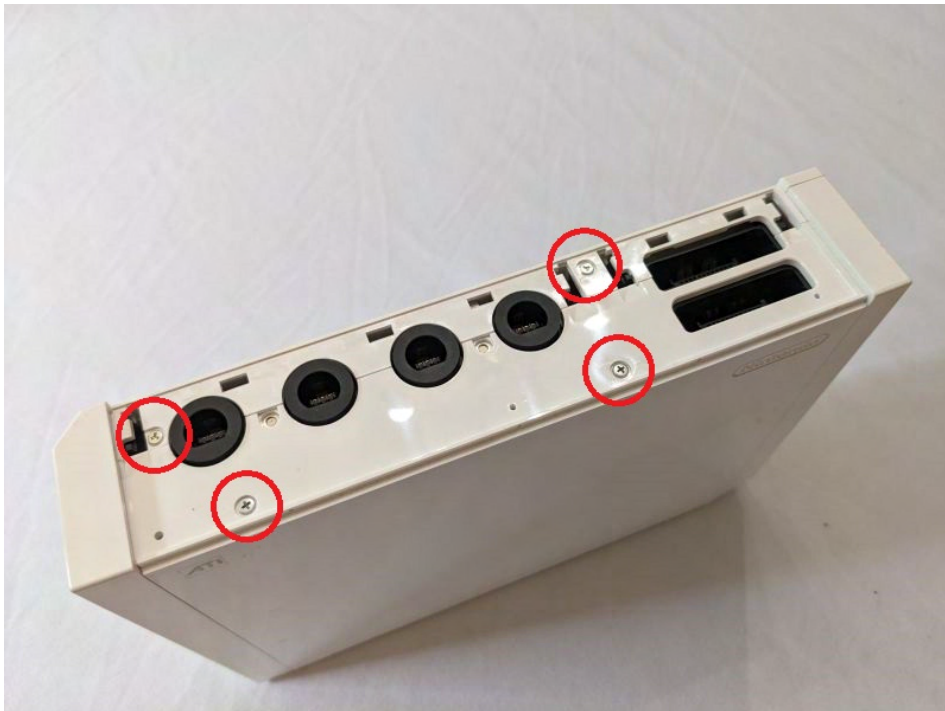
- 1) If your Wii has backwards compatibility with the GameCube, first remove the doors to the GameCube ports. Open them up, and pull upwards to remove the doors.



- 2) Remove the three black phillips head screws holding the black faceplate.



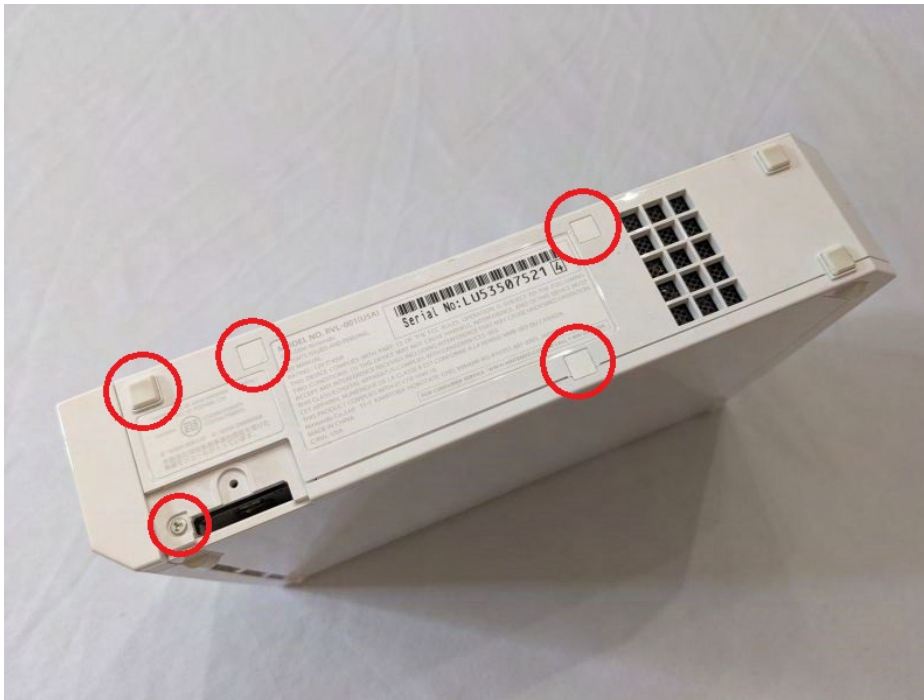
- 3) Pull up on the faceplate and slide it towards the rear of the console to remove it. Unscrew the two tri-wing screws and the two phillips screws.



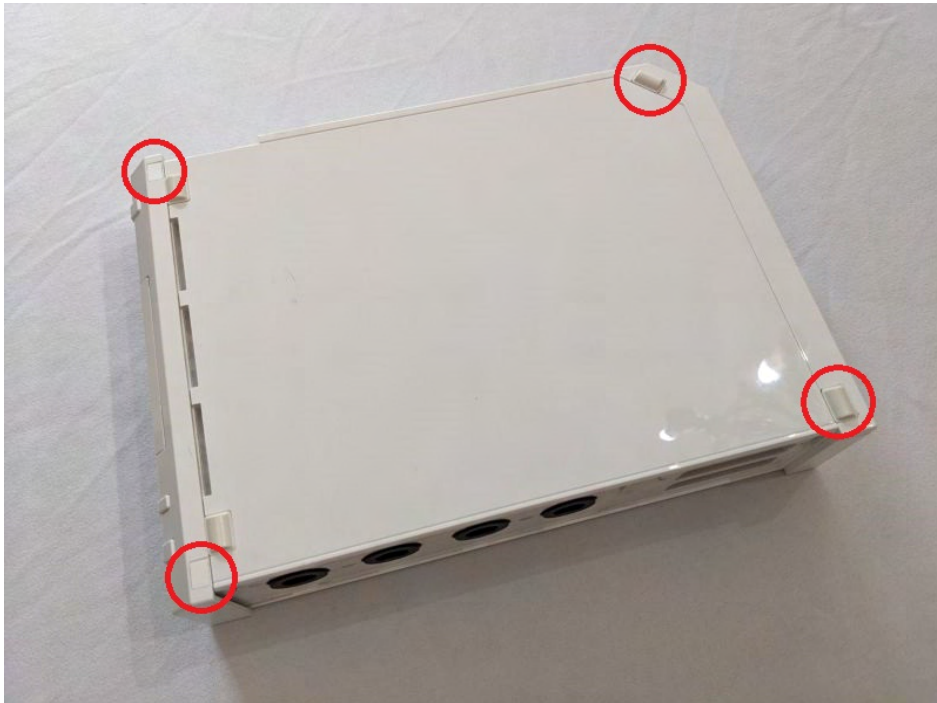
- 4) Flip the Wii over onto the opposite side. Unscrew the single phillips screw to remove the battery holder.



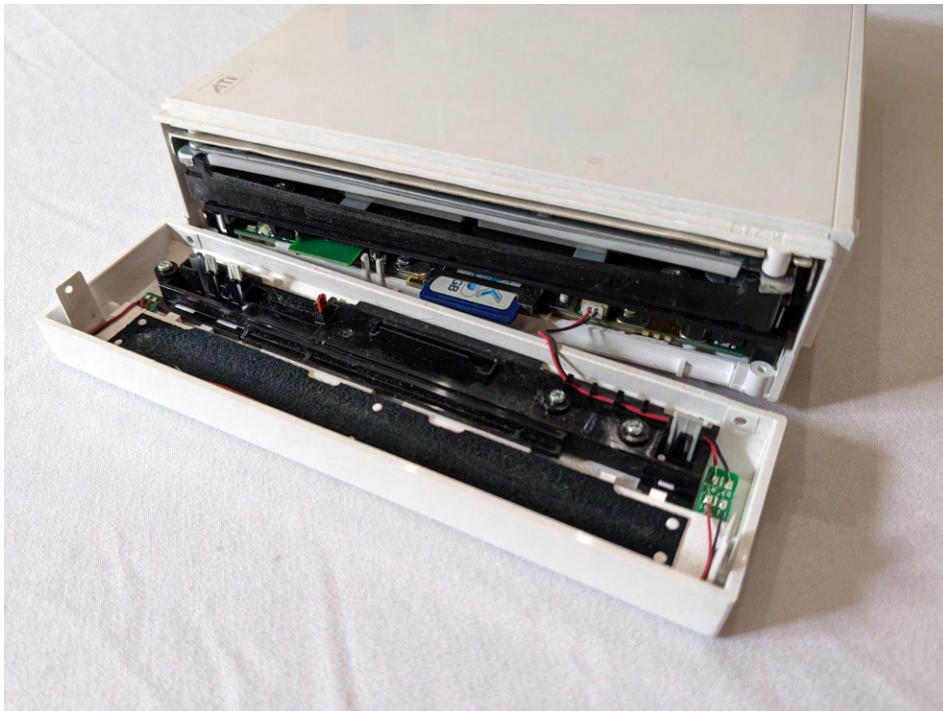
- 5) Remove the front rubber foot, and the three adhesive screw covers. Use a hobby knife to get under the screw covers. Unscrew the phillips and tri-wing screws.



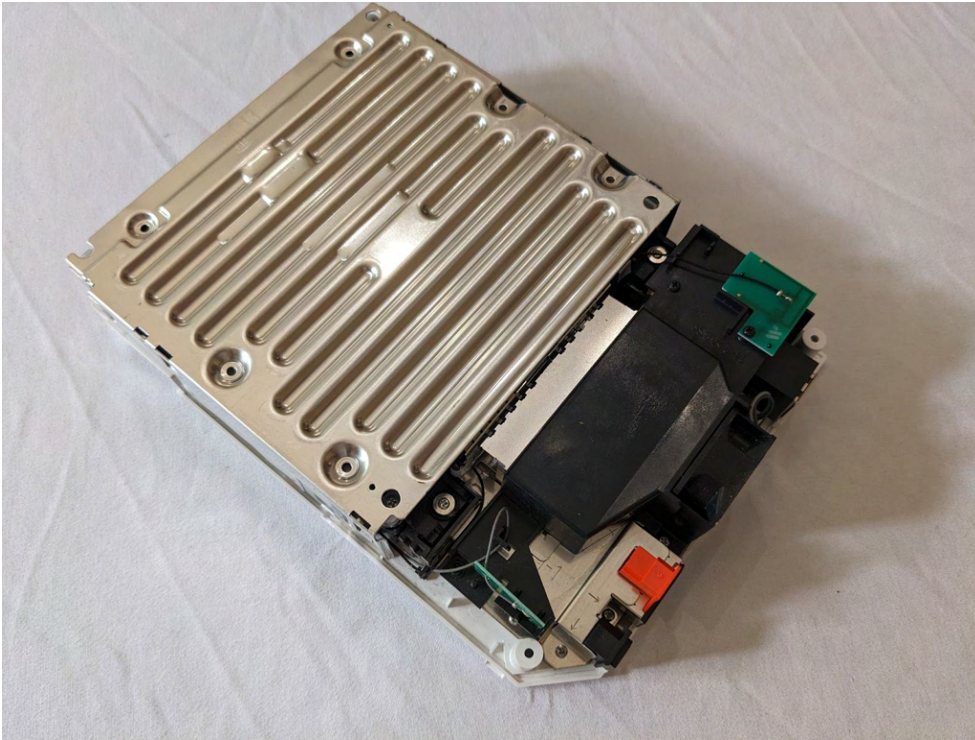
- 6) Flip the Wii so the bottom is facing upwards. Remove the two rear rubber feet and the two adhesive screw covers in the front. Unscrew the phillips screws in the front and the tri-wing screws in the back.



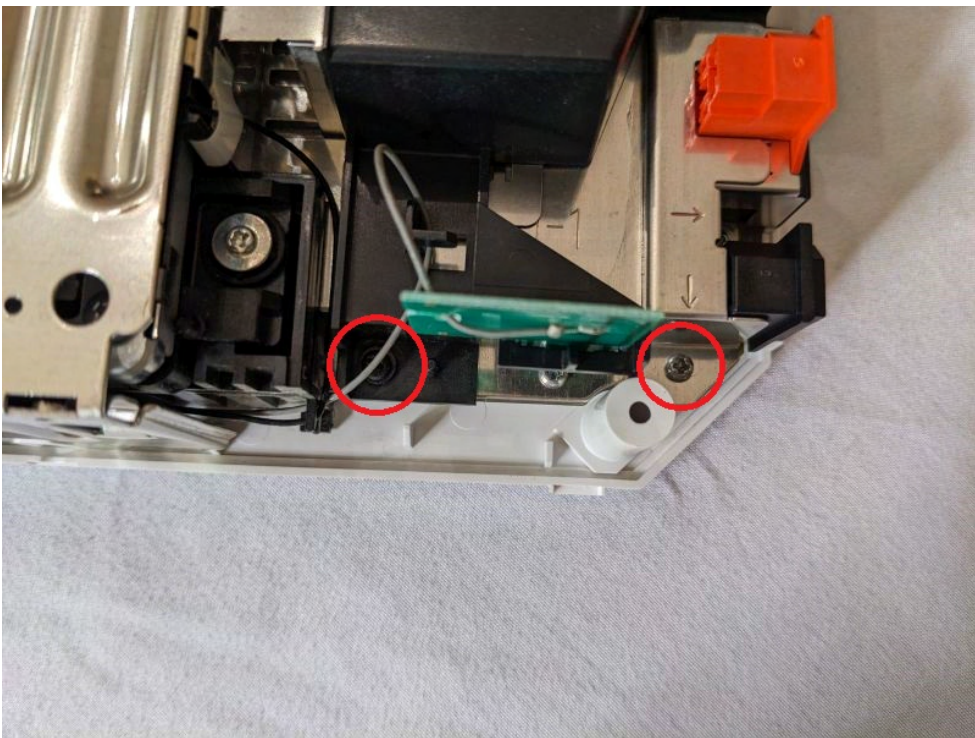
- 7) Remove the front faceplate. Pull it out slightly, then unplug the wire harness.



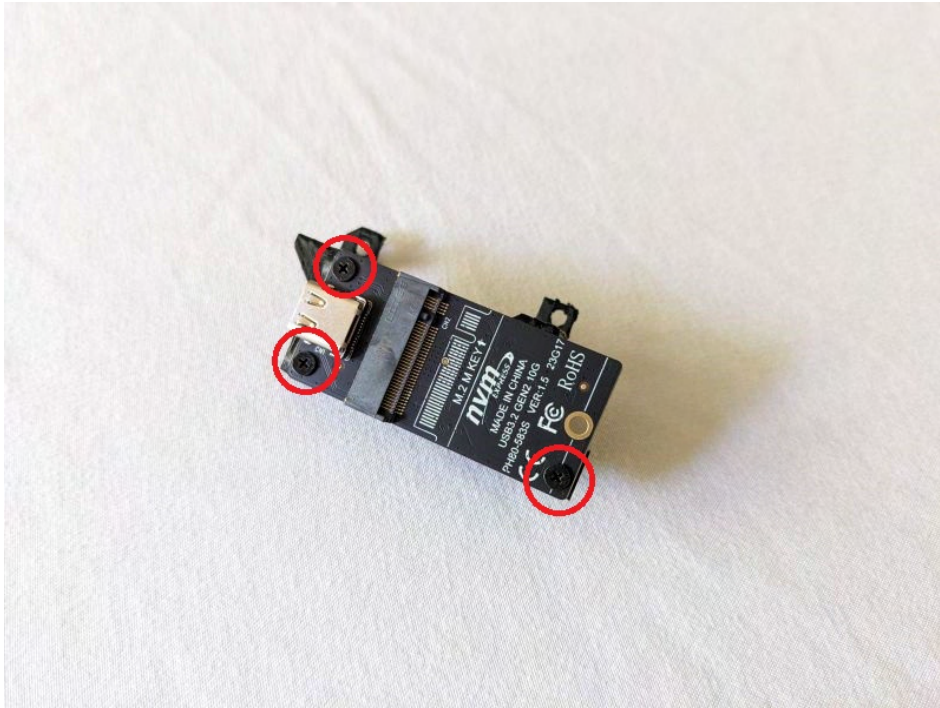
- 8) Remove the top cover of the Wii by pulling upwards on it.



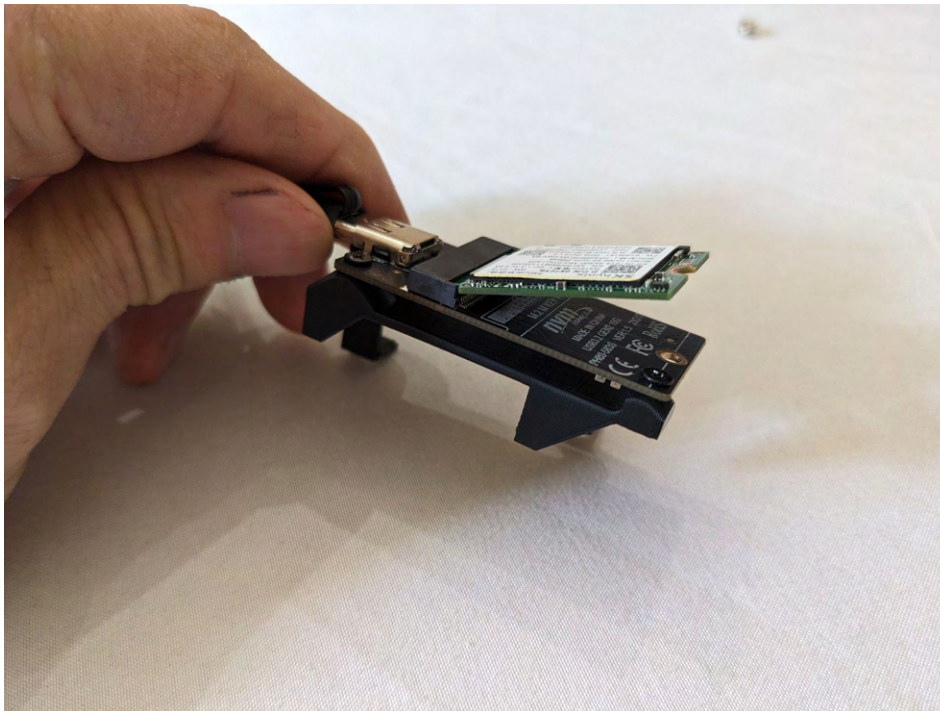
- 9) Remove the black screw and silver screw in the far back corner.

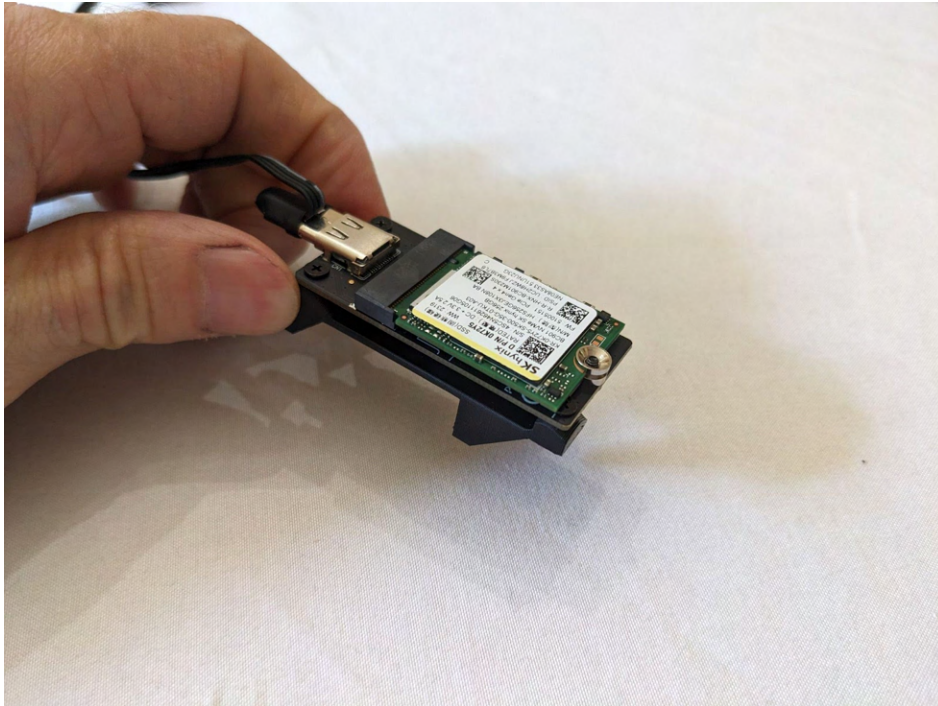


- 10) Grab the NVMe2Wii kit and install the PCB to the 3d printed bracket with the included 3 screws.

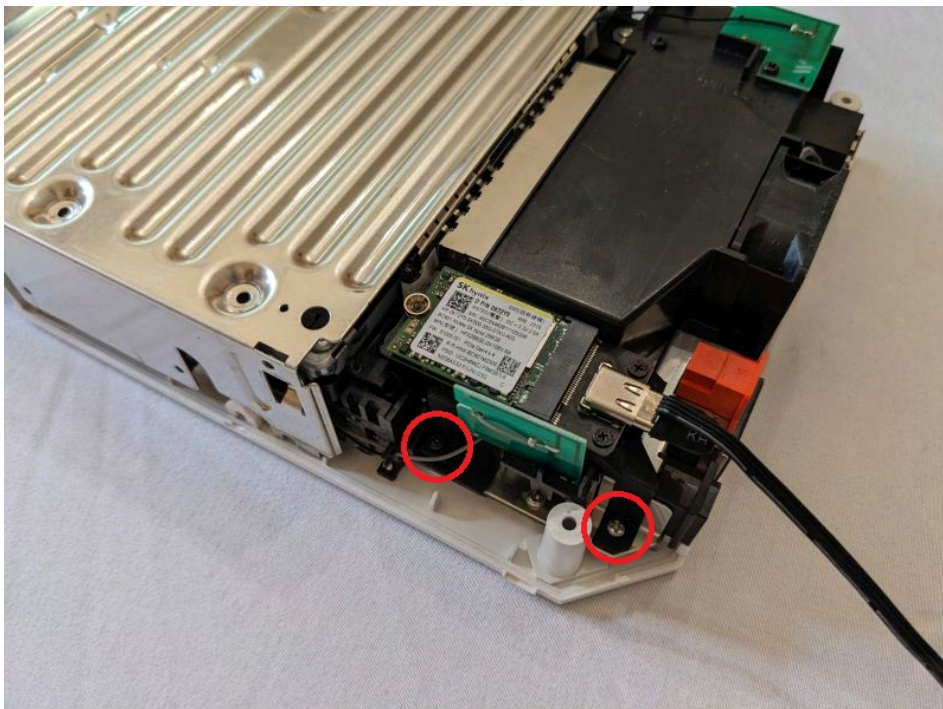


- 11) Install the 2230 NMVe drive onto the PCB. Install the drive spacer/nut and screw. The chamfered inner hole goes upward (which seems backwards). Also, plug in the USB C to USB A cable.

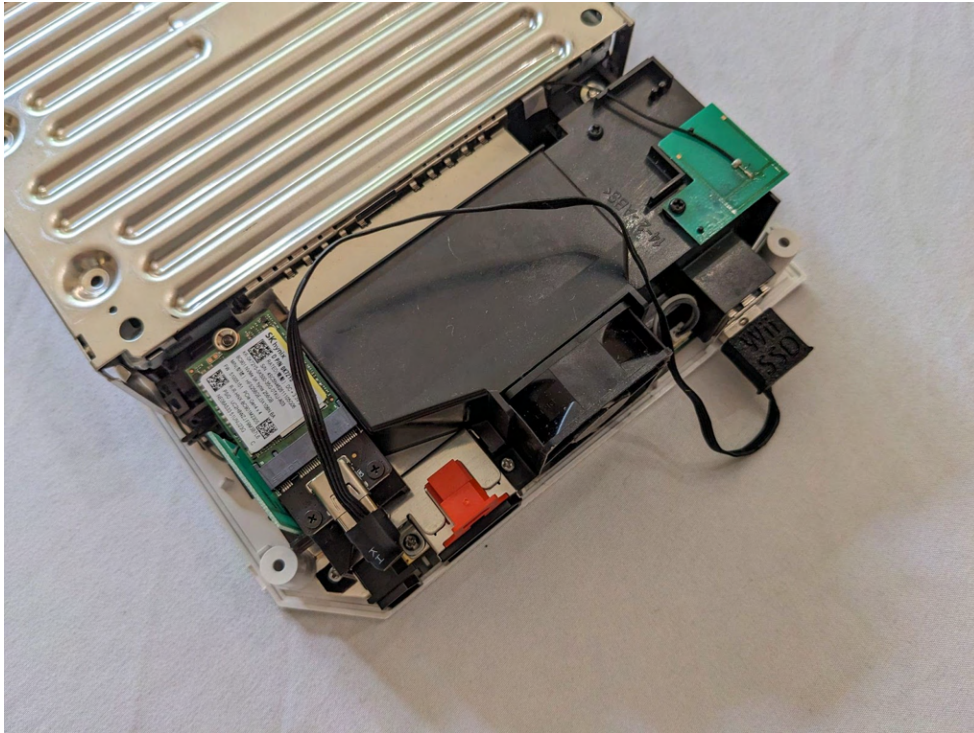




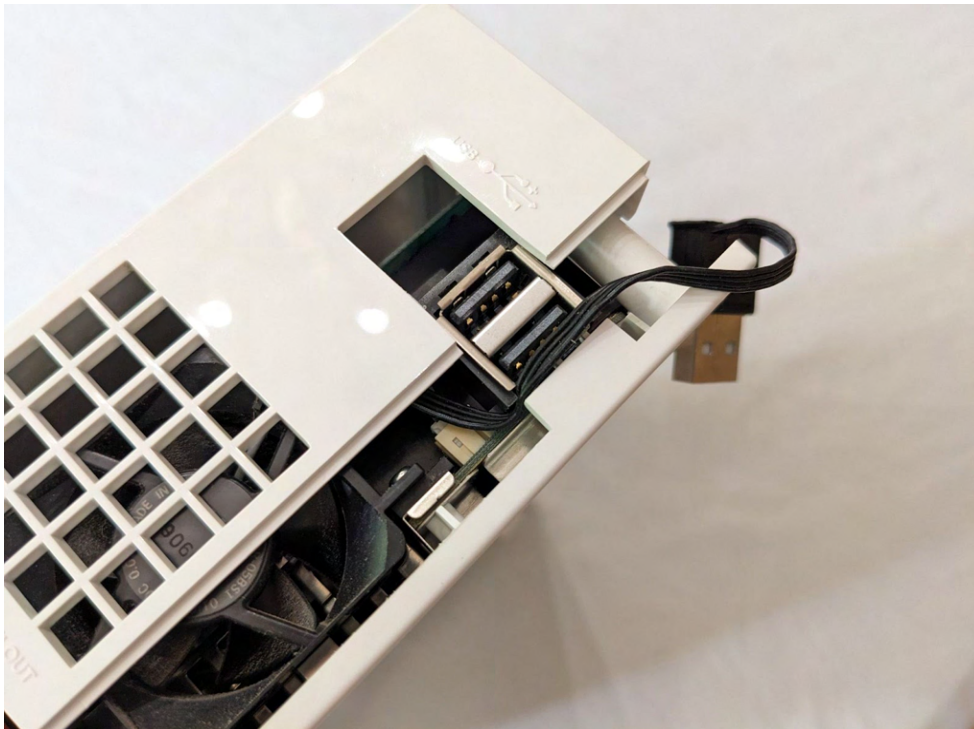
- 12) Install the NVMe2Wii into the rear corner of the Wii. Reinstall the two screws that you previously removed. Do not tighten them down very tight as there is now less thread engagement.



13) Route the USB cable over to the other side of the Wii and plug in the USB A side.



14) Smoosh the cable into the small opening around the corner of the USB port on the Wii.



- 15) Reinstall the top cover of the Wii being careful to keep the USB cable wires from being pinched.



- 16) Reassemble the console in reverse order of how you took it apart.



- 17) Congratulations! You are finished. You can reconnect the power, controllers, etc. You can also use the USB cable to access the internal drive at any point.