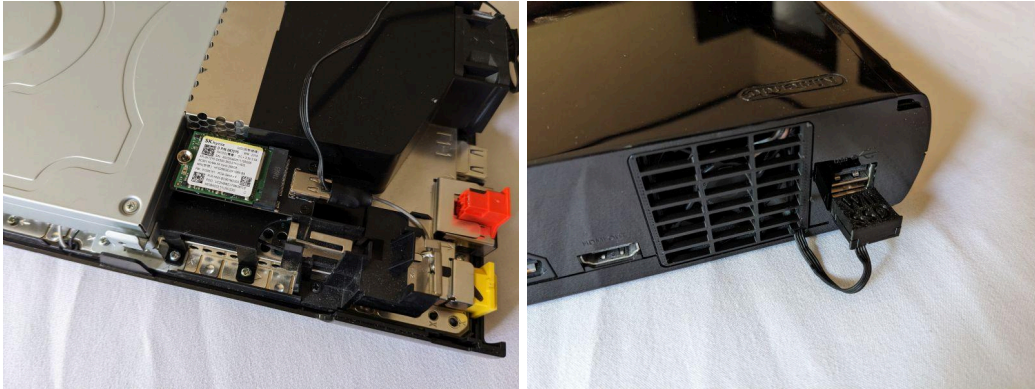


M.2WiiU Installation Guide

By The Peaceful Outcome



Tools Required:

- Tri-wing screwdriver
- #0 phillips screwdriver
- Hobby knife

- 1) Flip the Wii U upside down. Remove the four screw stickers / covers. Use a hobby knife to start peeling them up.



2) Remove the three screws along the side.



3) Pull the side cover out from the rear of the console. Slide it towards the back to remove it.



4) Remove the four tri-wing screws on the bottom.



5) Unscrew and remove the battery from the side of the Wii U.



6) Remove the two screw stickers on the side. Then remove the two screws.



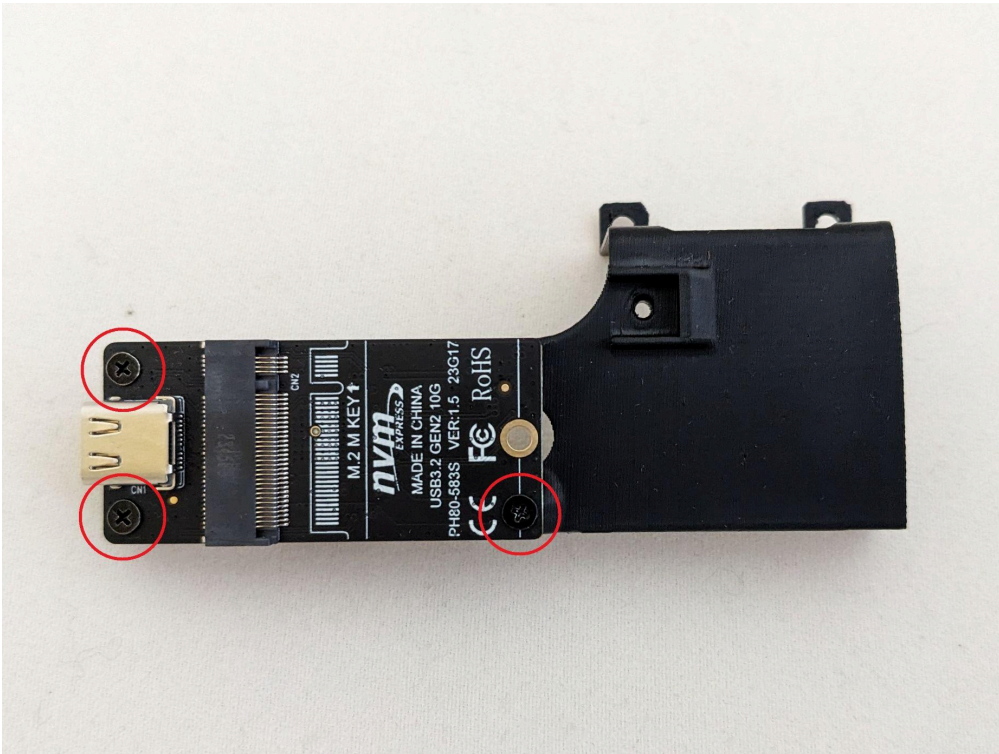
7) Pull up on the back of the Wii U top cover, then slide it back to remove it.



8) Remove the two screws shown below.



9) Grab the PCB mount and PCB board. Screw in the three mounting screws.

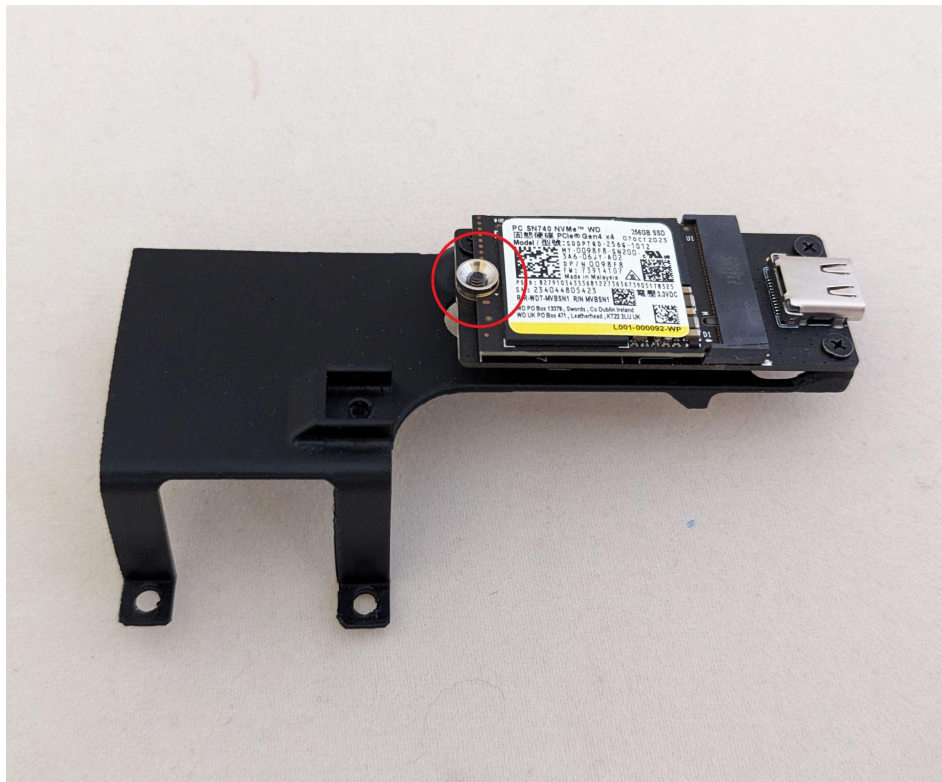
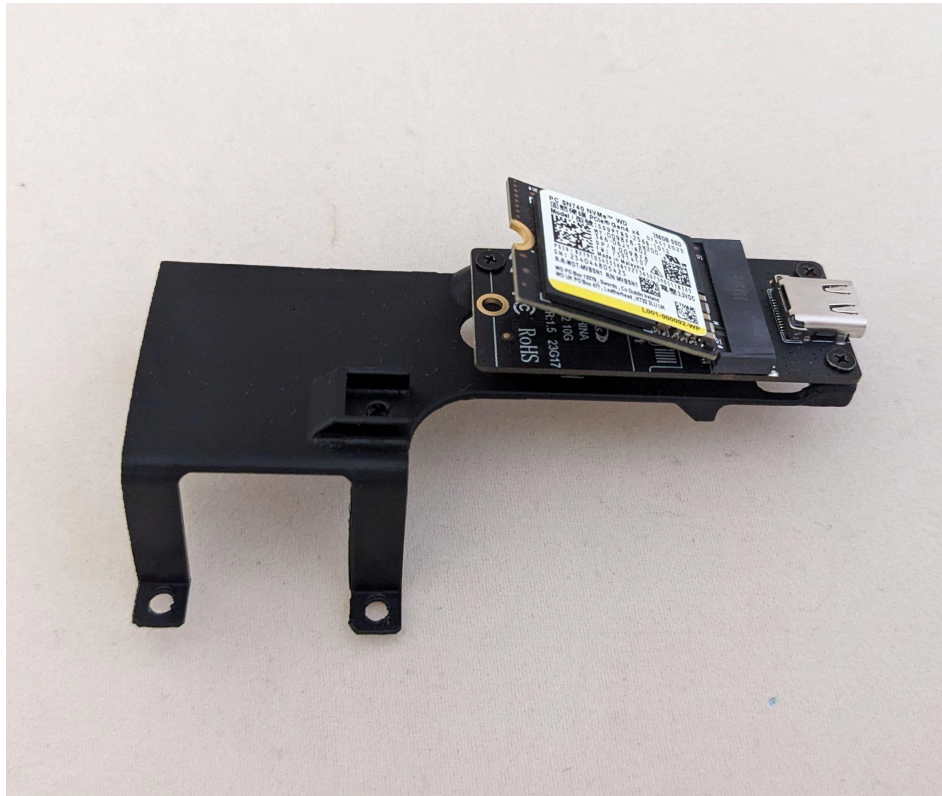


10) Mount the SATA drive to the PCB.

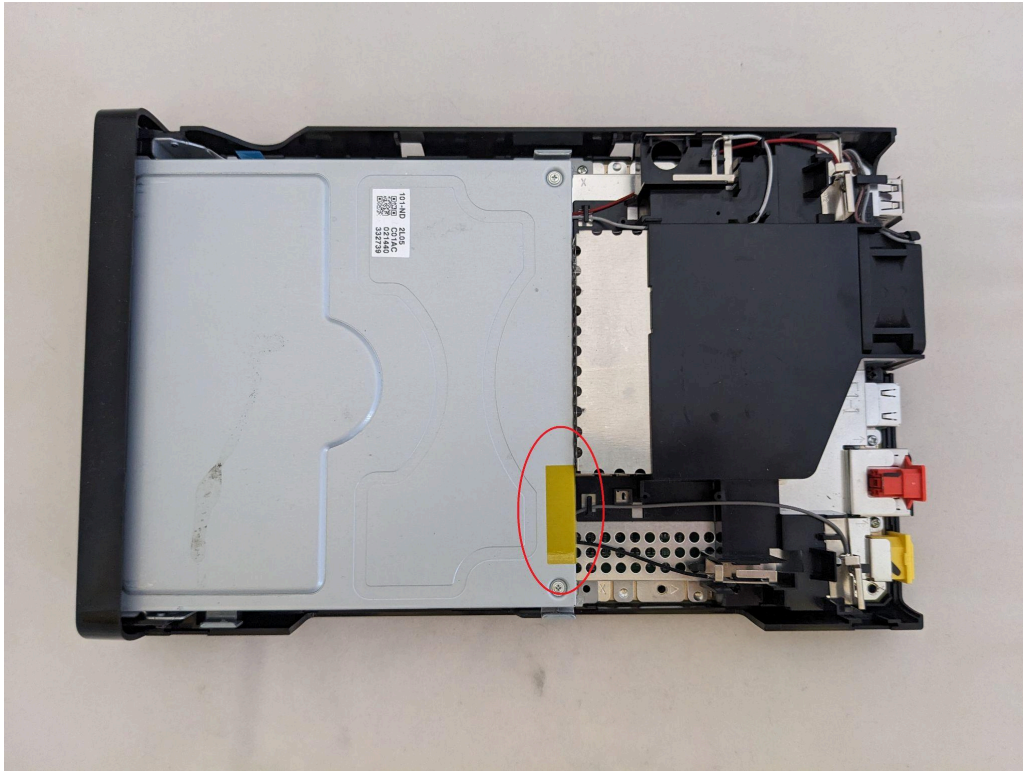
- a) For 2242, 2260 and 2280 SSDs, insert the SSD and install the side clamp. Do not over tighten the screw.



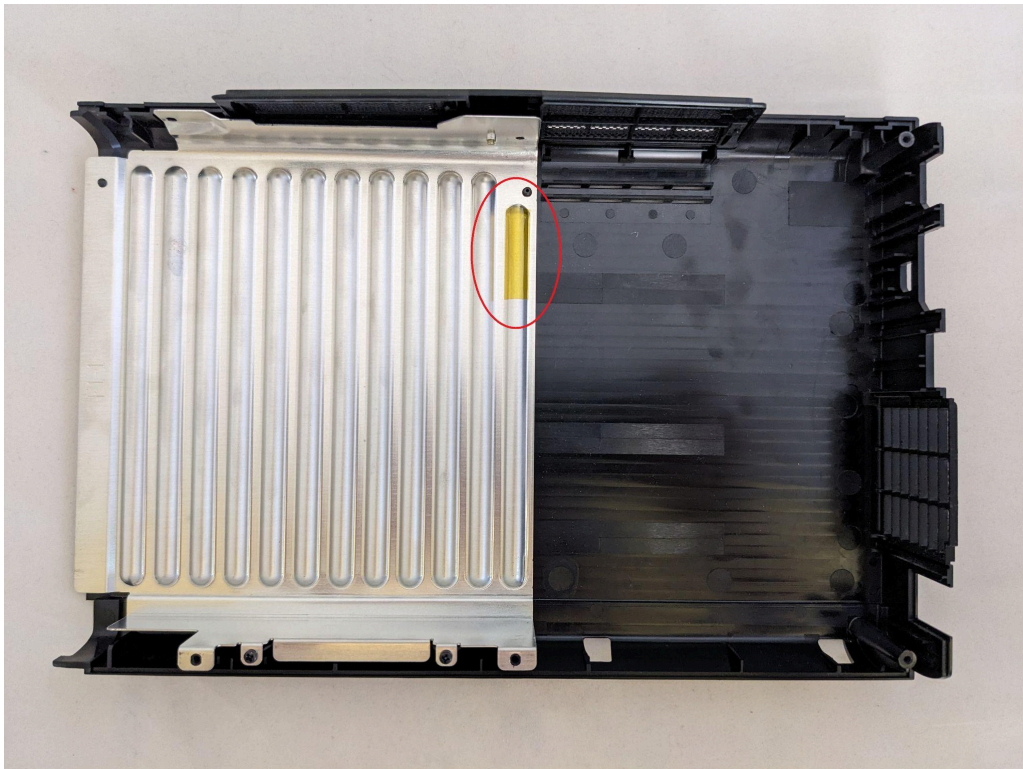
- b) For 2230 drives, install the drive spacer/nut and screw. The chamfered inner hole goes upward (which seems backwards). Insert the USB C cable into the PCB as well.



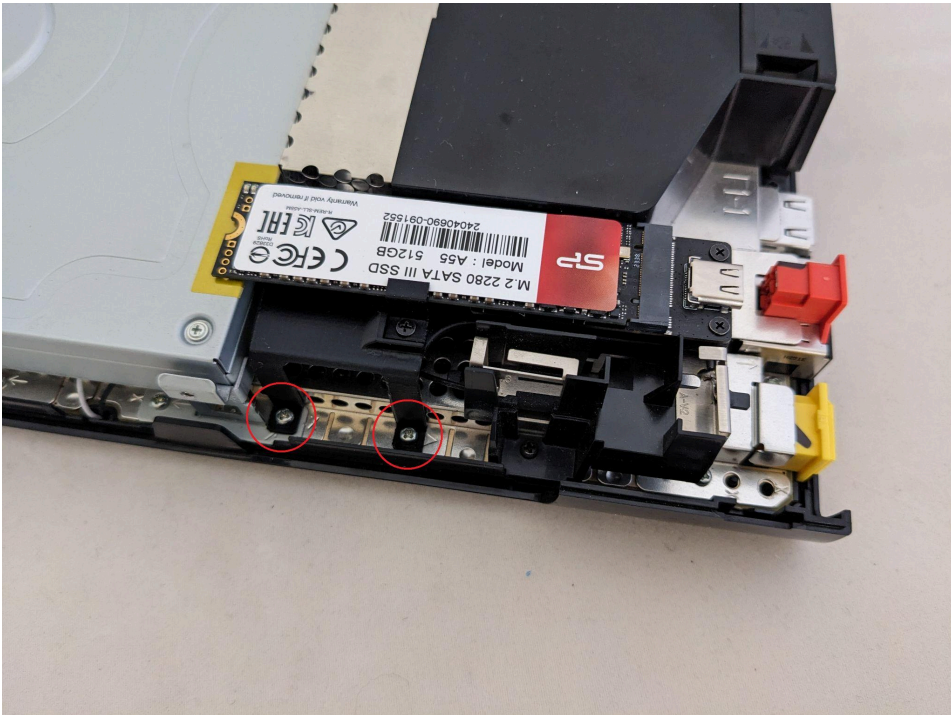
11) Place a strip of kapton tape on the optical drive.



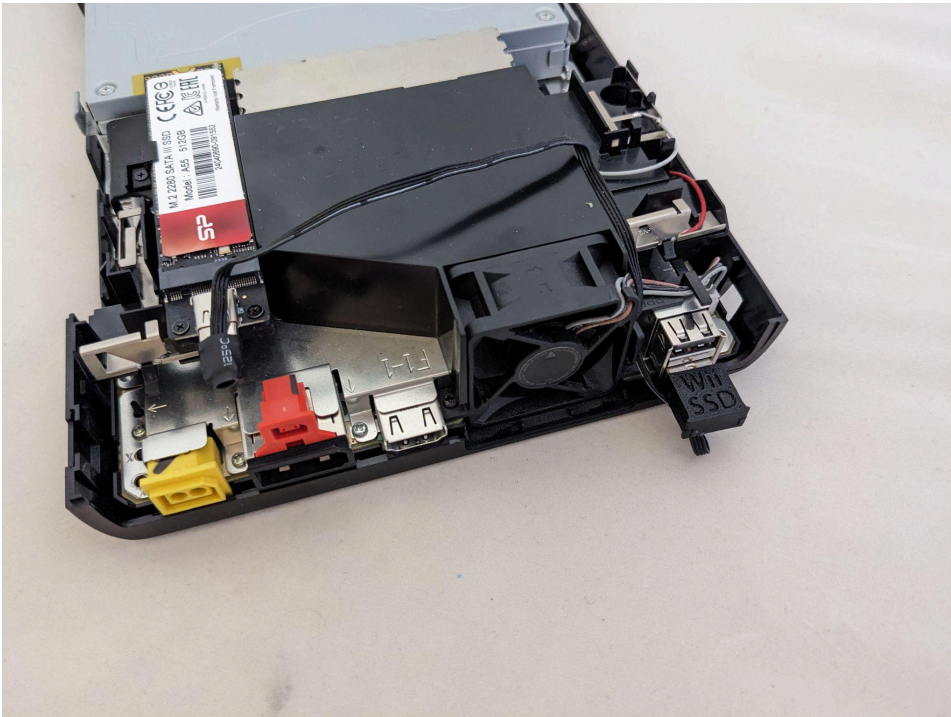
12) Place the other strip of kapton tape on the top shell.



- 13) Install the M.22WiiU into the rear corner of the Wii U. Reinstall the two screws that you previously removed. **Do not tighten them down very tight as there is now less thread engagement.**



- 14) Route the USB cable over to the other side of the Wii U and plug in the USB A side.



- 15) Grab the Wii U top cover. Remove the fan grill from the back by sliding it out. Replace it with the included fan grill. Orient it so that the small cutout is in the lower right corner.



- 16) Reinstall the top cover of the Wii U. While doing so, route the USB cable through the cutout in the fan grill.



17) Reassemble the console in reverse order of how you took it apart.



18) Congratulations! You are finished. You can reconnect the power, controllers, etc. You can also use the USB cable to access the internal drive at any point.