

Playstation 2 Quiet Fan Modification Installation Guide

By The Peaceful Outcome



Tools Required:

- #2 Phillips screwdriver
- Knife or flat bladed screwdriver

- 1) Take your Playstation 2 and disconnect everything plugged into it (controllers, memory cards, power cord, etc.)



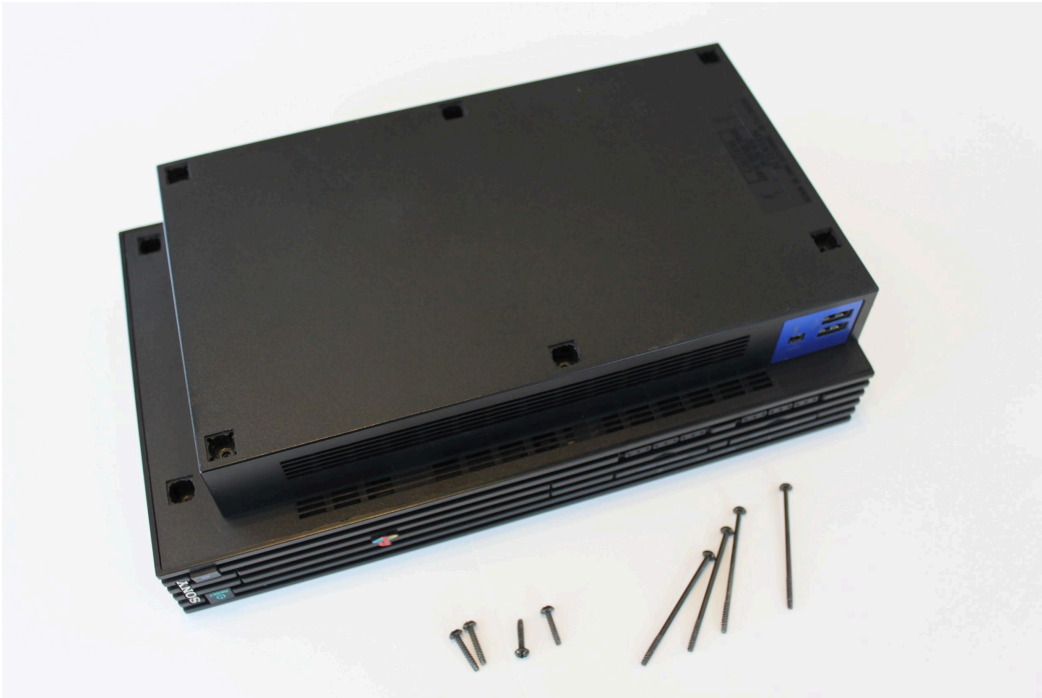
- 2) Turn the console around. On the right side you will likely have a warranty sticker. Cut this sticker or remove it so the console can be opened up.



- 3) Turn the console upside down and pry to remove the rubber feet and plastic plugs to get at the screws that hold the upper and lower half together.



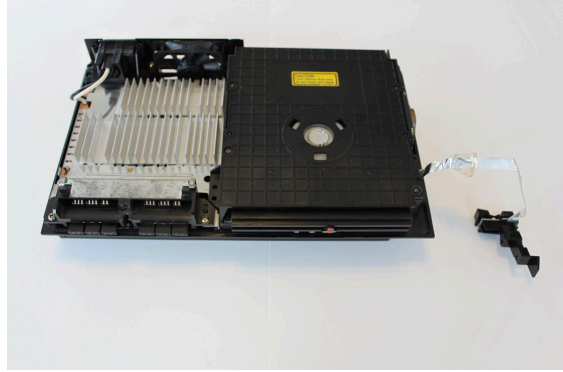
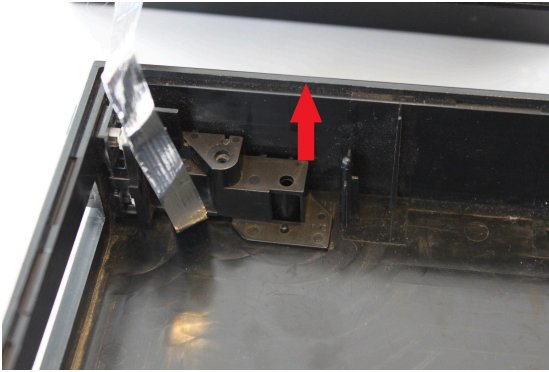
- 4) Use the phillips screwdriver to remove the 8 screws from the case.



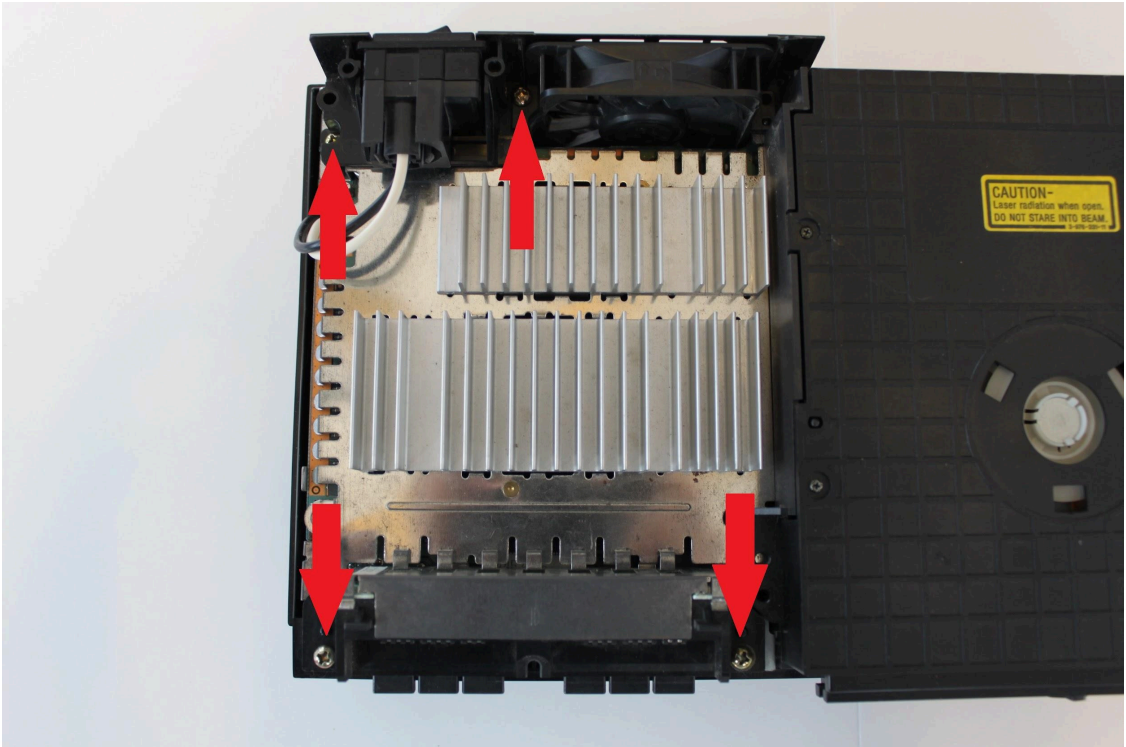
- 5) Pull up on the console case from the back side tilting it toward the front. Once it is loose, flip the left side up and to the right.



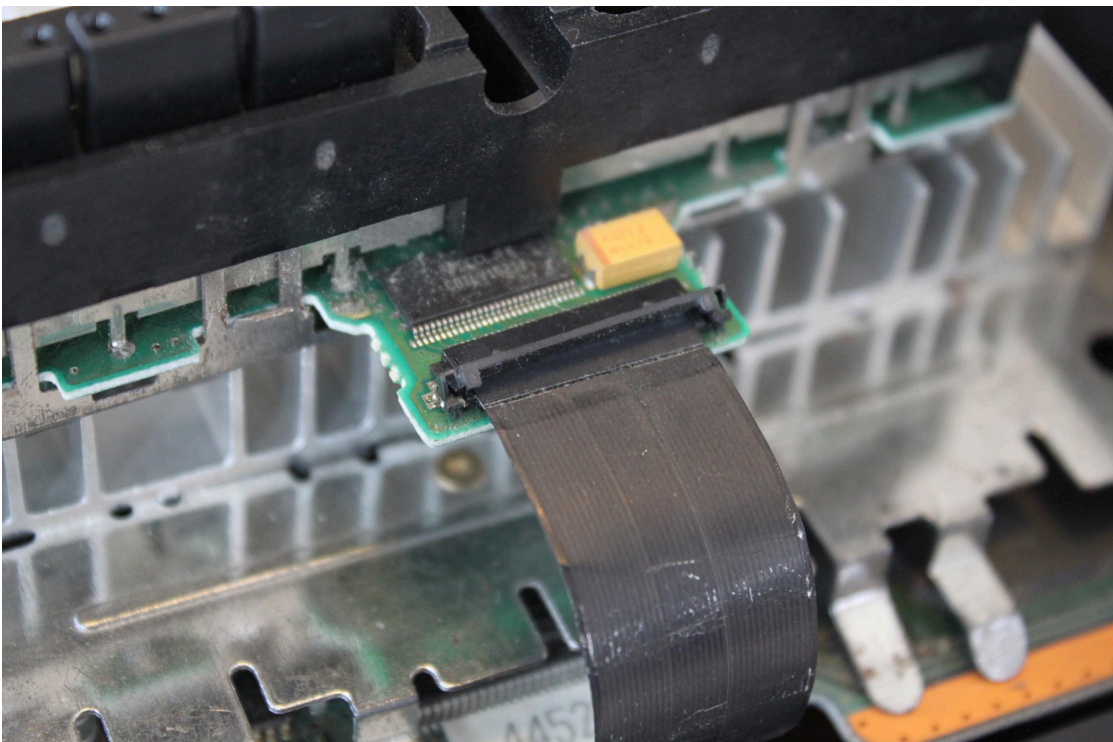
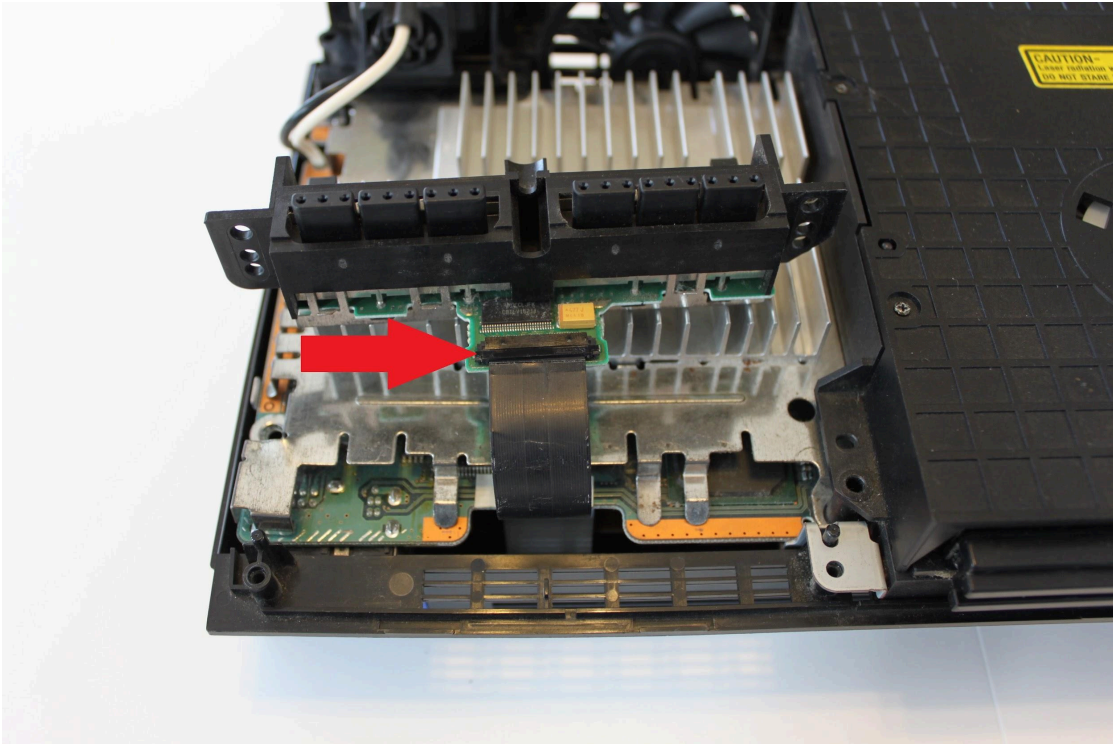
- 6) Pull up on the back side of the power and eject button assembly to release it from the top side of the case. Place the upper case to the side.



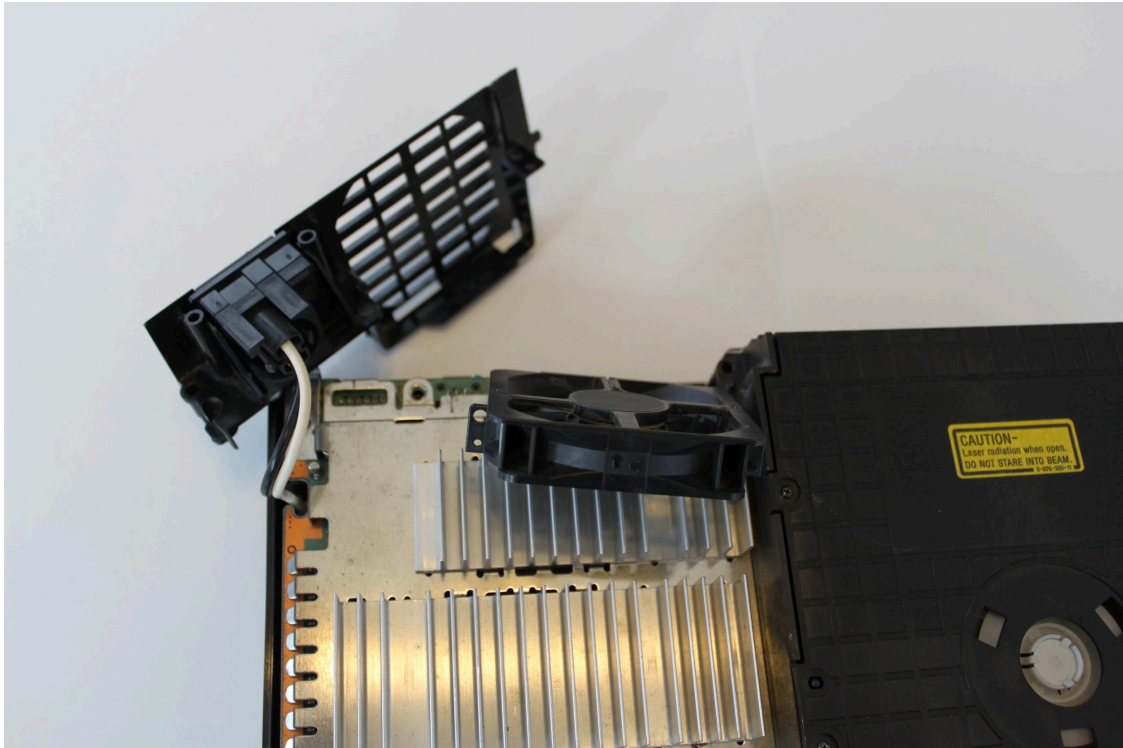
- 7) Remove the two phillips screws that hold the back panel and fan in, and the two screws holding the memory card and controller board.



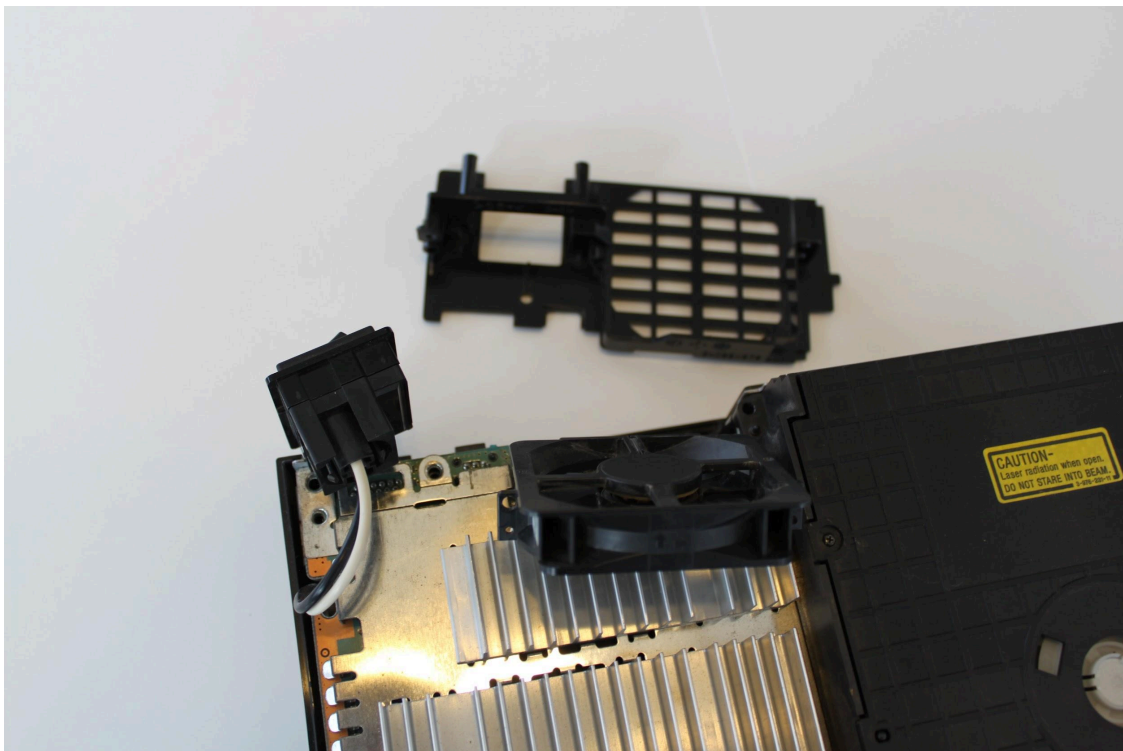
- 8) Pull the controller board up gently. There is a ribbon cable attached to it. Gently pull / flip / rotate up the connector to release the ribbon cable. Place the board to the side.



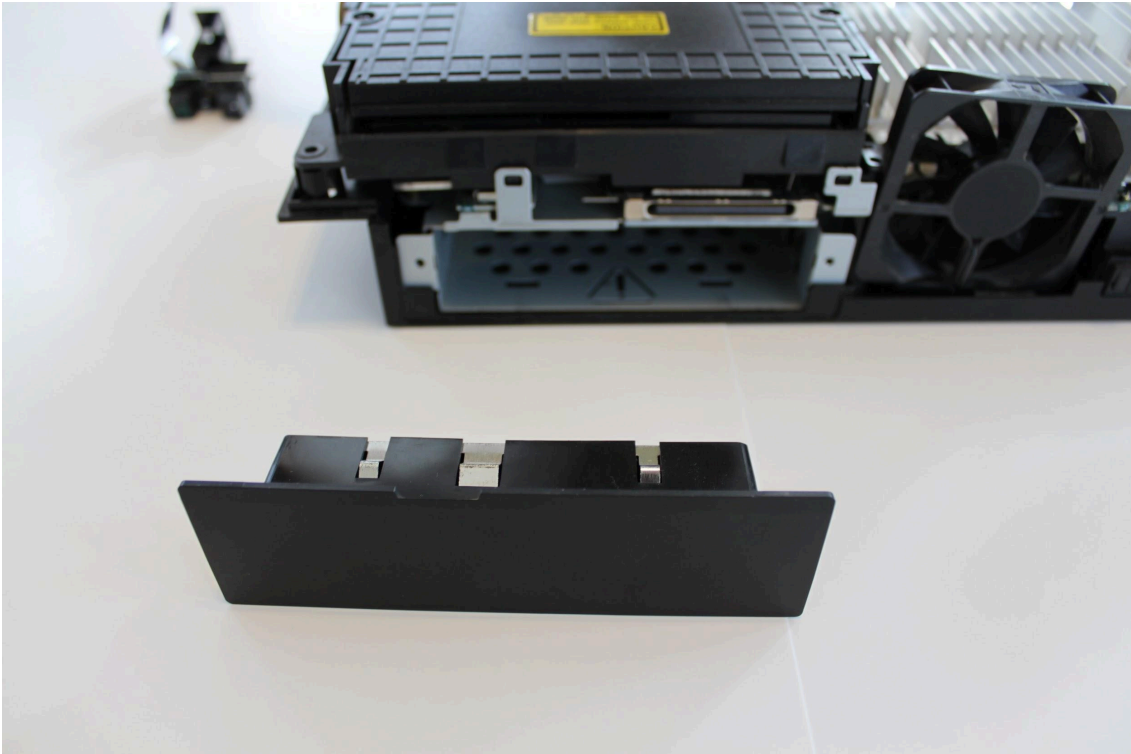
- 9) Pull the case fan up and out of the back plate. Then pull up and remove the back plate.



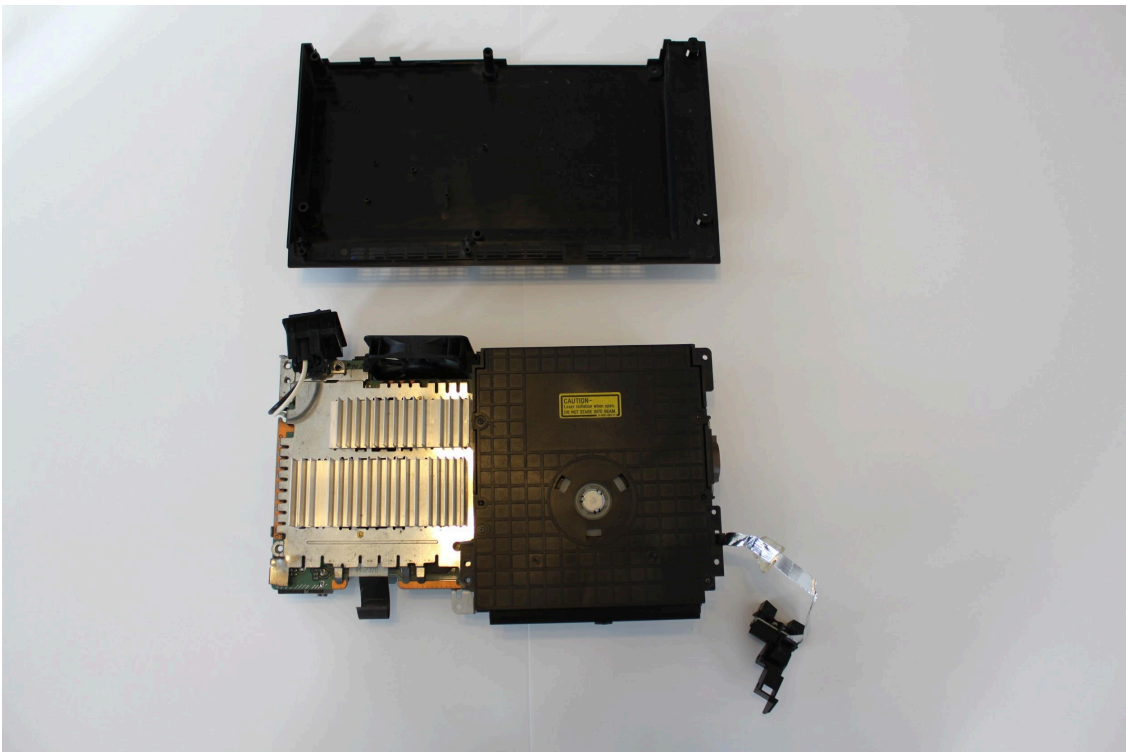
- 10) Pull up on the power switch assembly to remove it from the back plate.



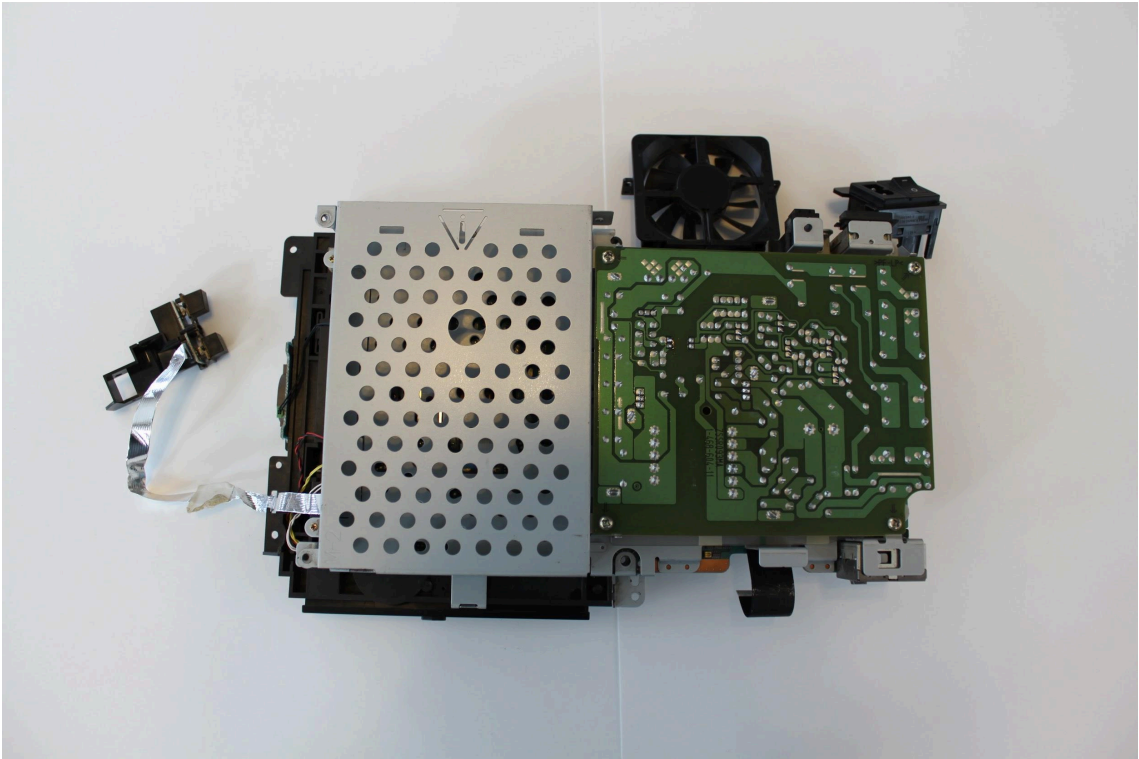
11) On the back side of the console, remove the expansion bay panel.



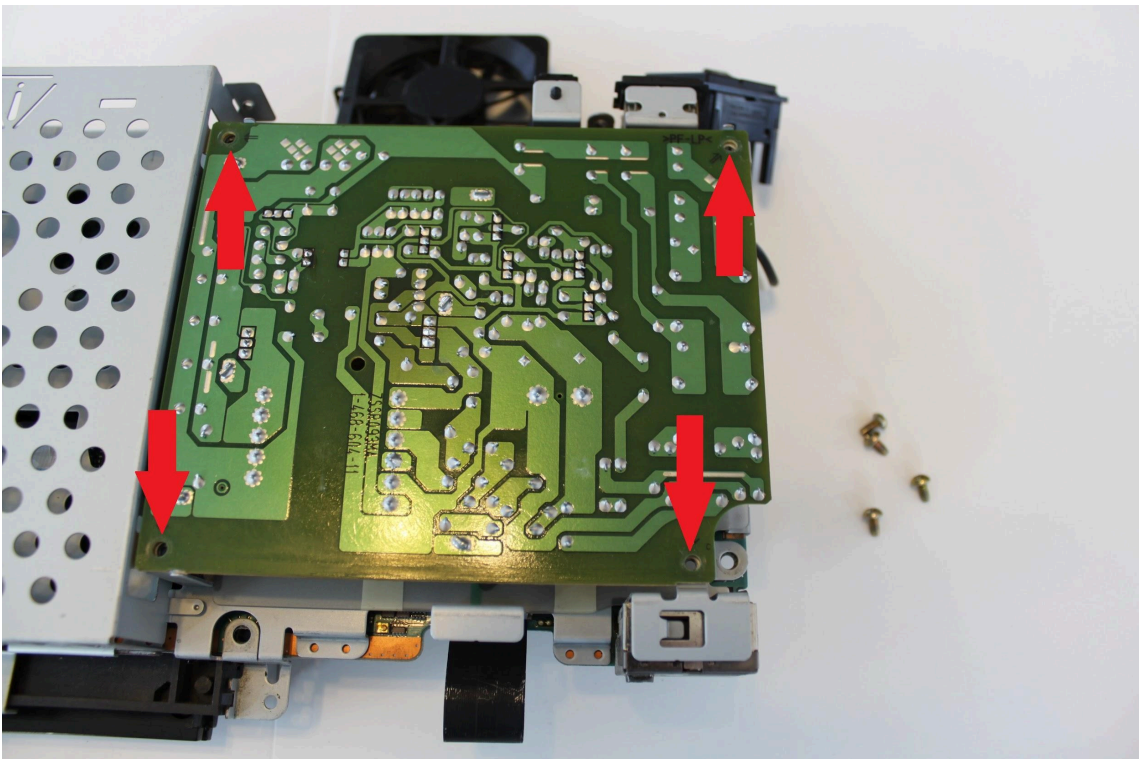
12) Lift the inner assembly out of the lower case.



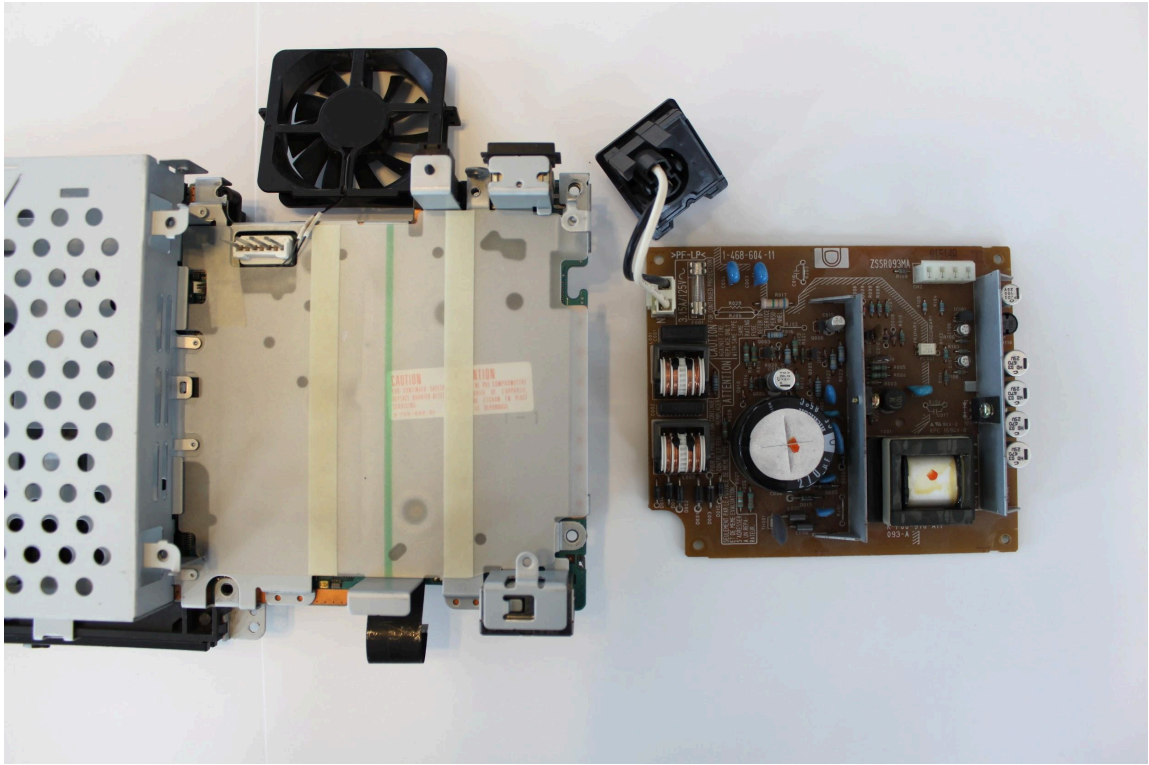
13) Carefully flip the assembly upside down.



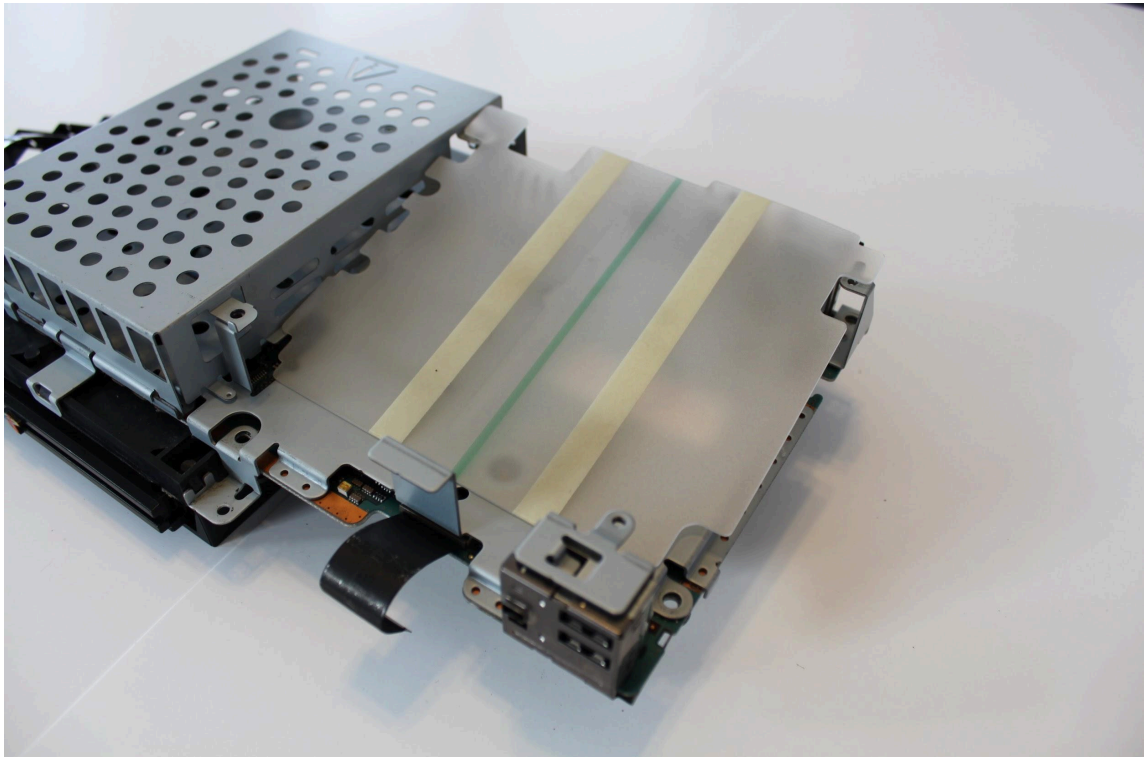
14) Remove the 4 phillips screws holding the power board to the chassis.



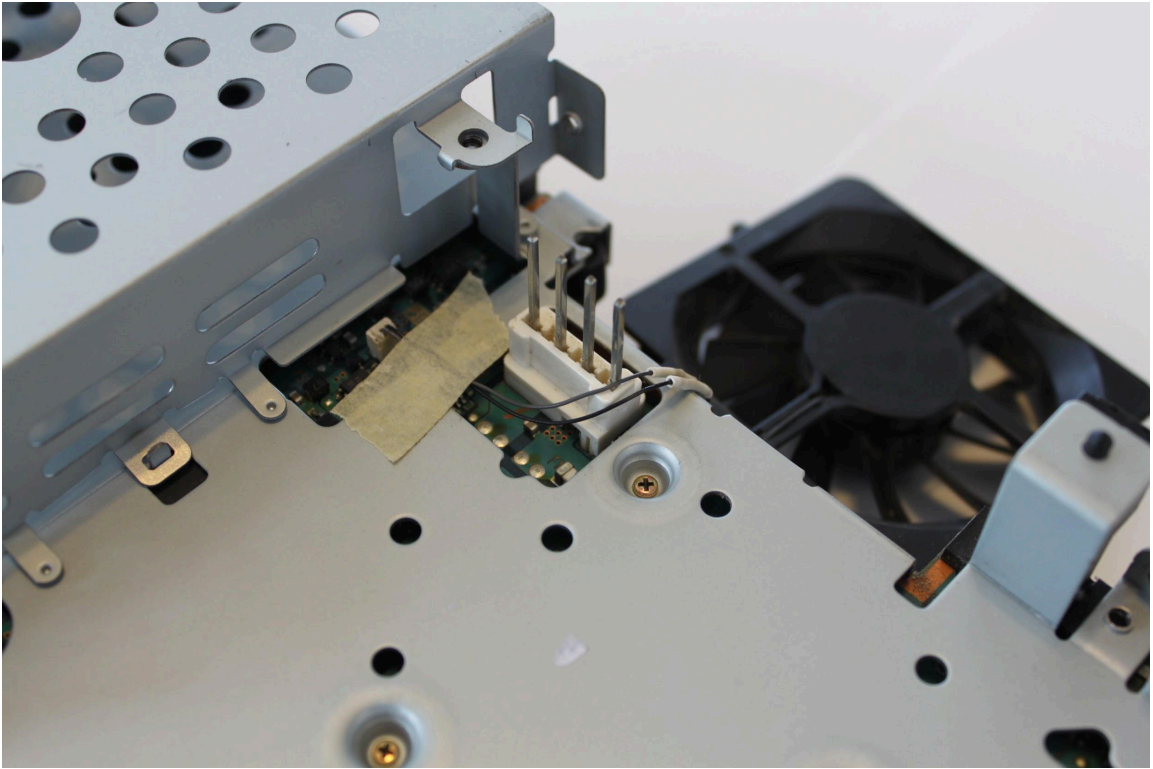
15) Pull the power board straight up to release it from the main board. Place it to the side.



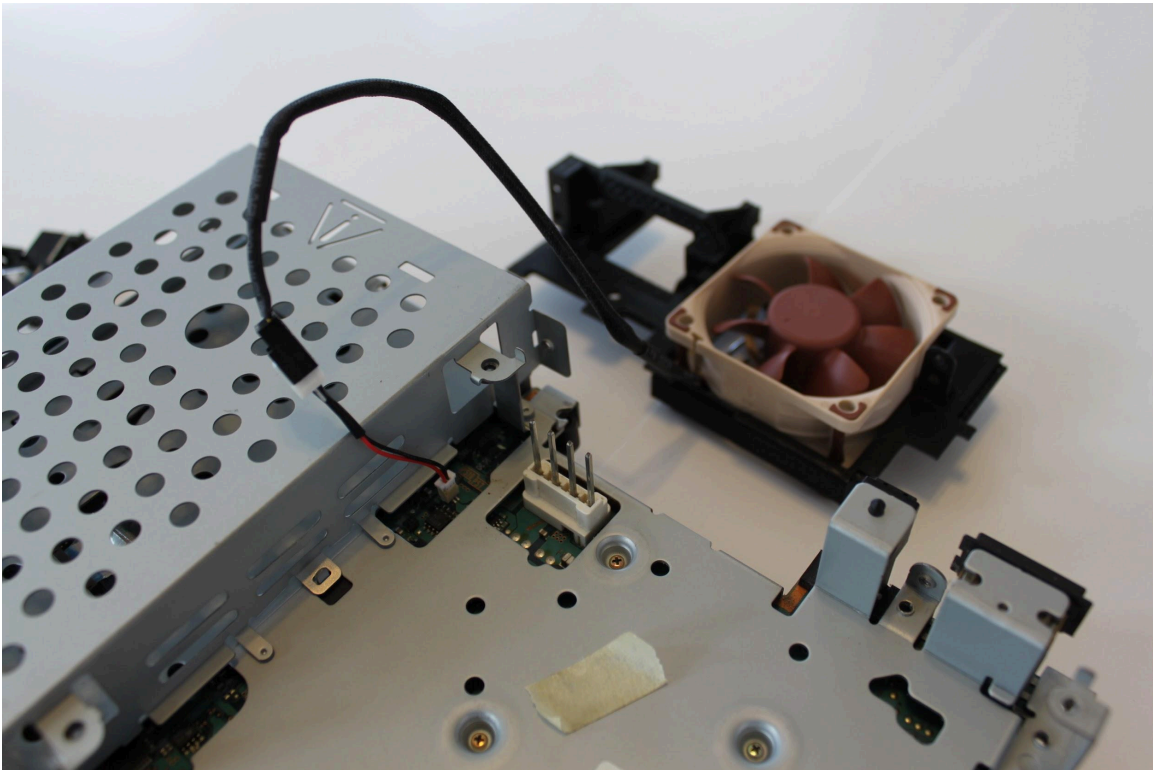
16) Remove the plastic insulation sheet and place it to the side.



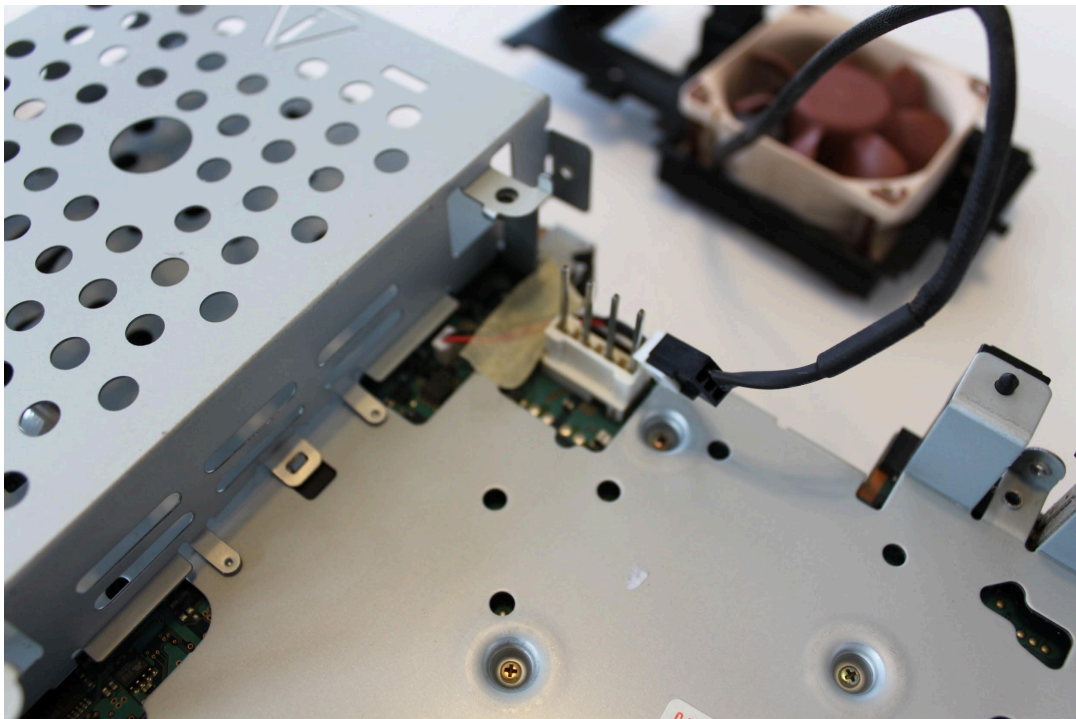
17) Remove the fan wire tape. Unplug the fan and set it to the side.



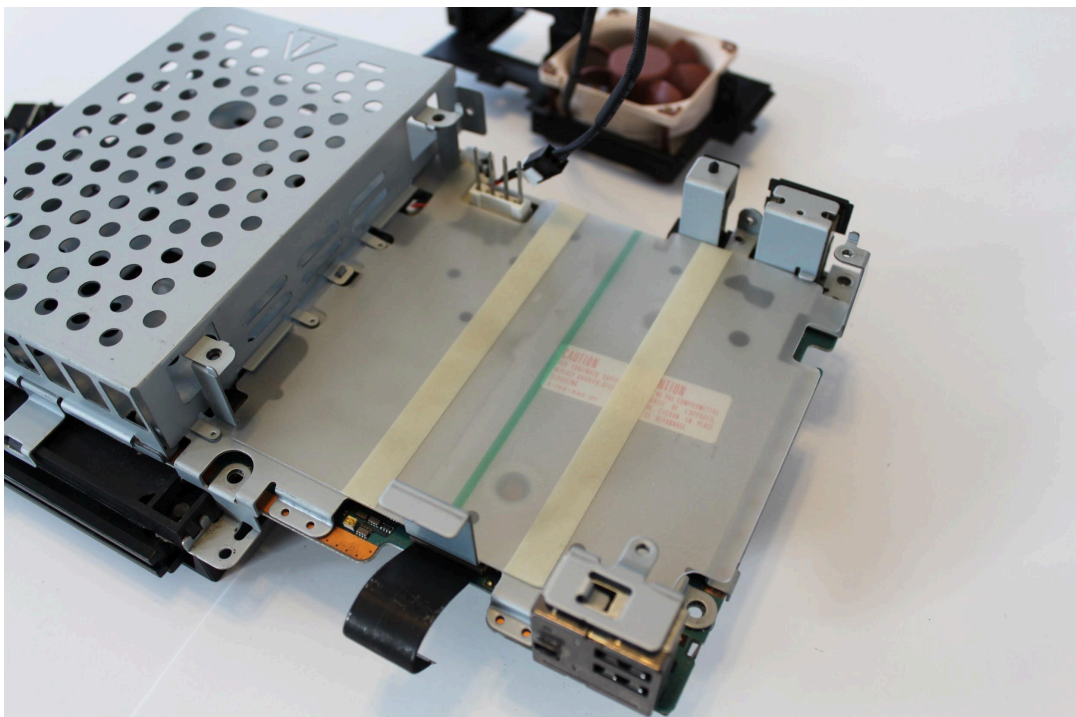
18) Take the fan modification and plug the fan into the plug on the console board.



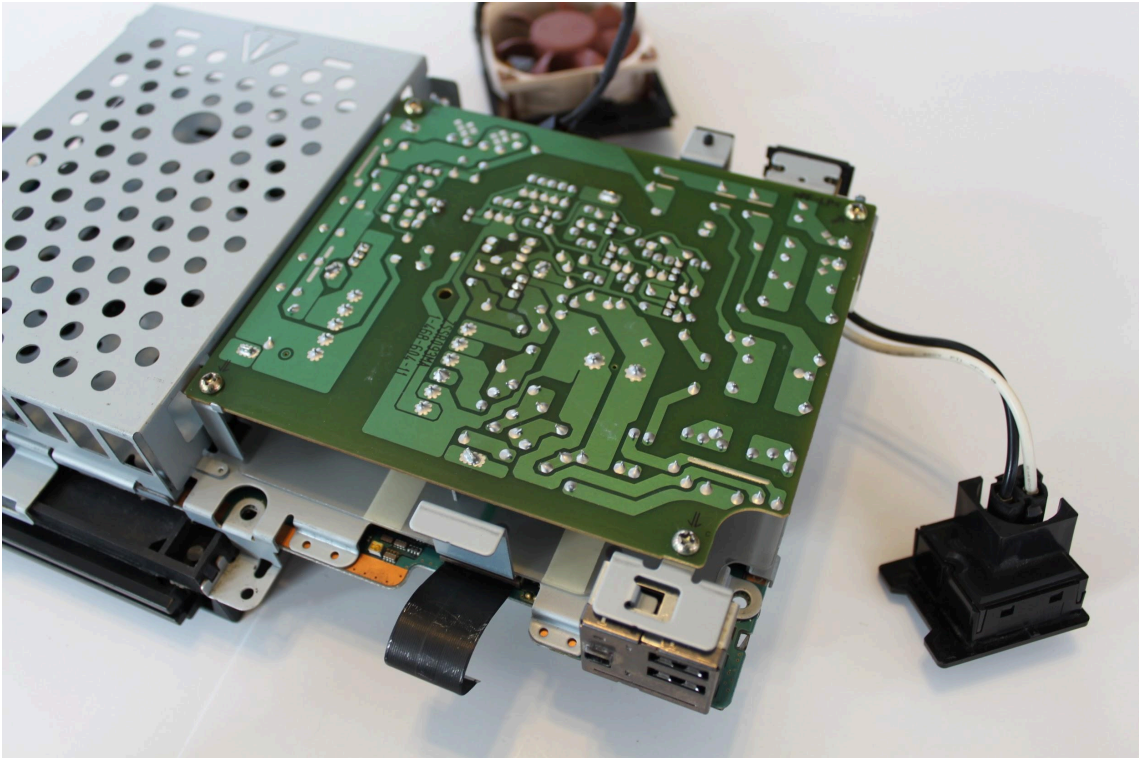
- 19) Reuse the tape to hold down the new fan wires. If the tape was torn in disassembly you can use new tape. How the fan wire is routed is not important as long as it does not interfere with reassembly.



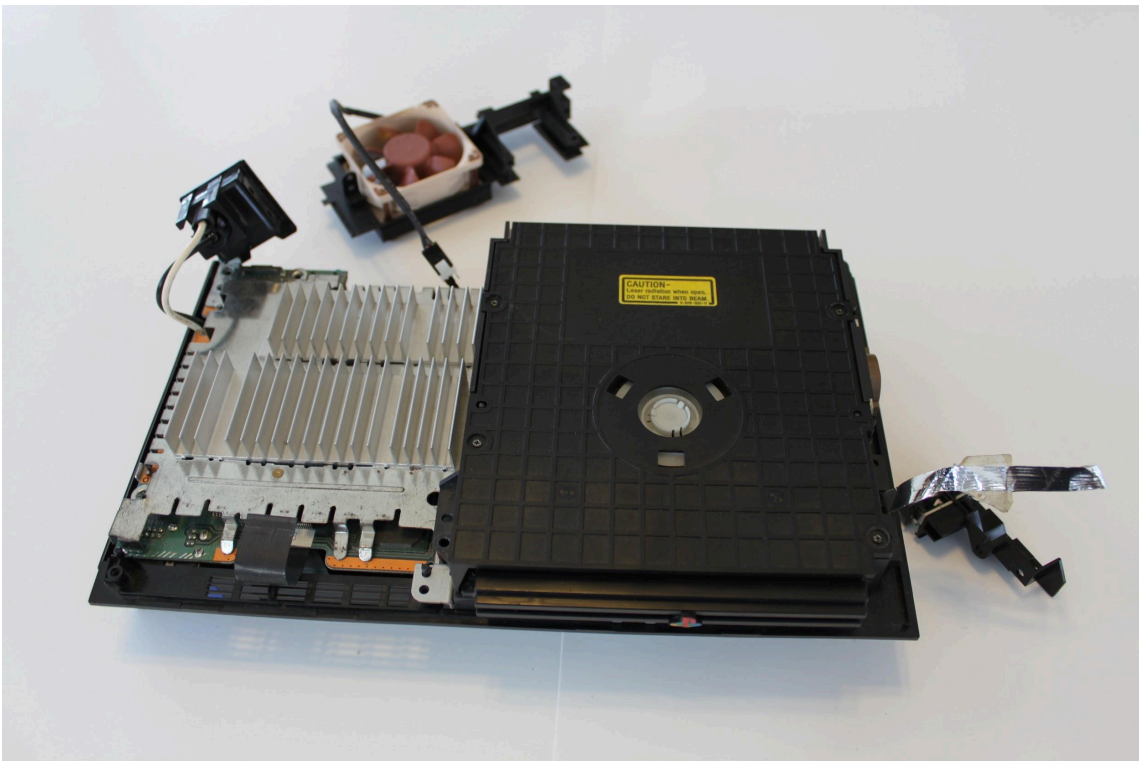
- 20) Replace the plastic insulation sheet.



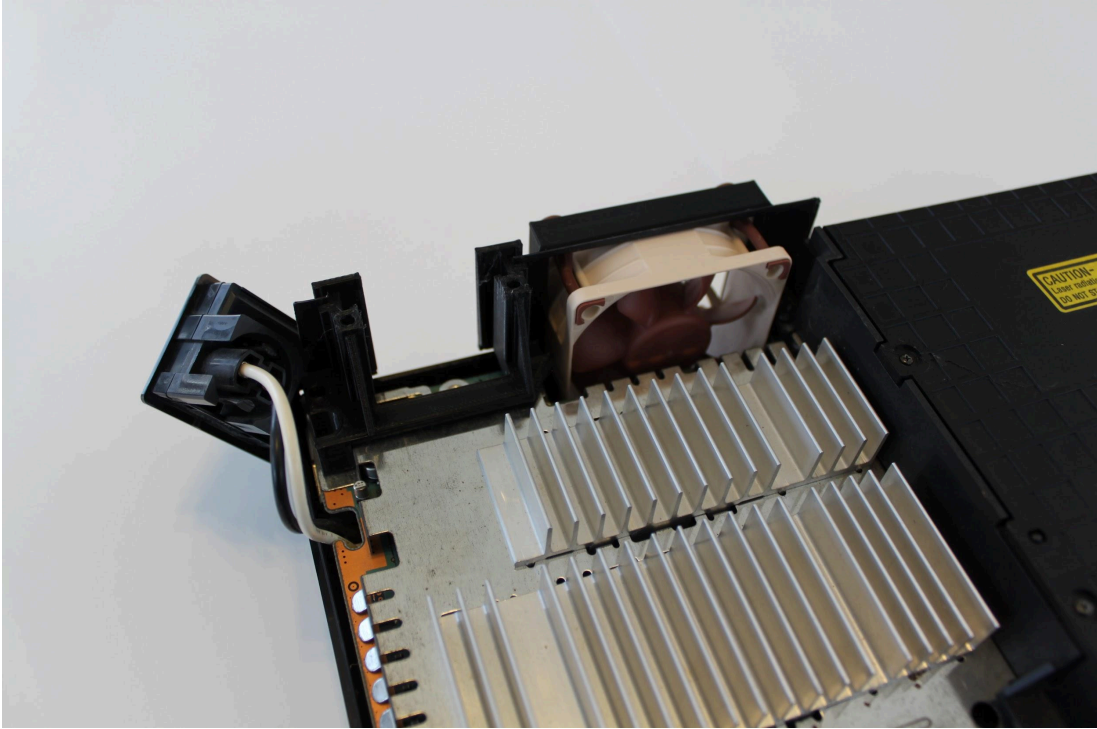
- 21) Push the power board straight down onto the main board making sure to line up the 4 pin connector. Replace the 4 screws that hold it to the chassis.



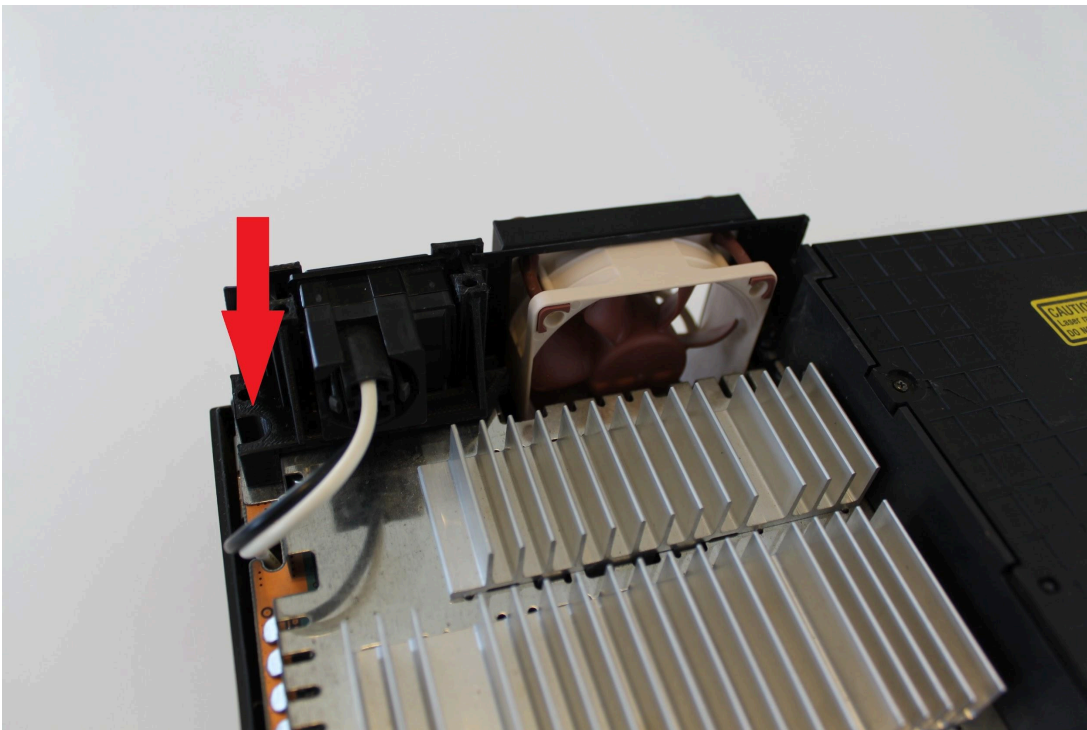
- 22) Place the inner assembly back into the lower case.



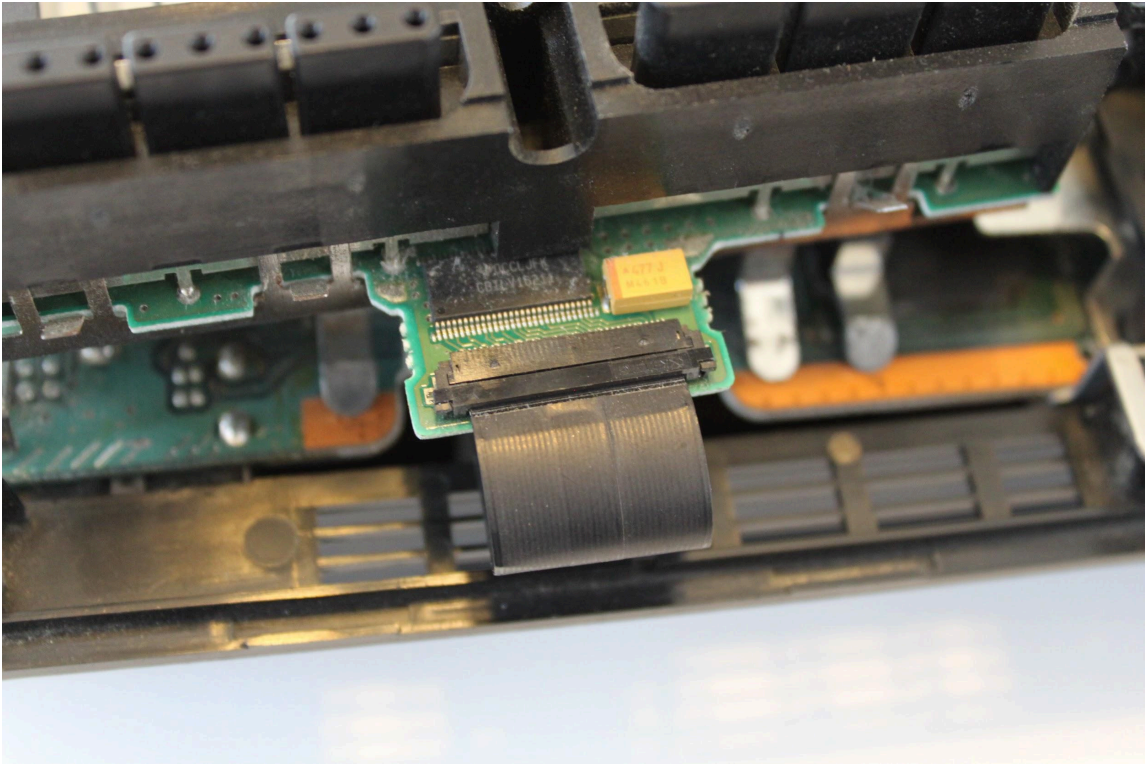
- 23) Install the fan modification back plate. The fan wire should be pushed in the case as needed. Some cases require a fair bit of giggling the mod around for it to seat properly.



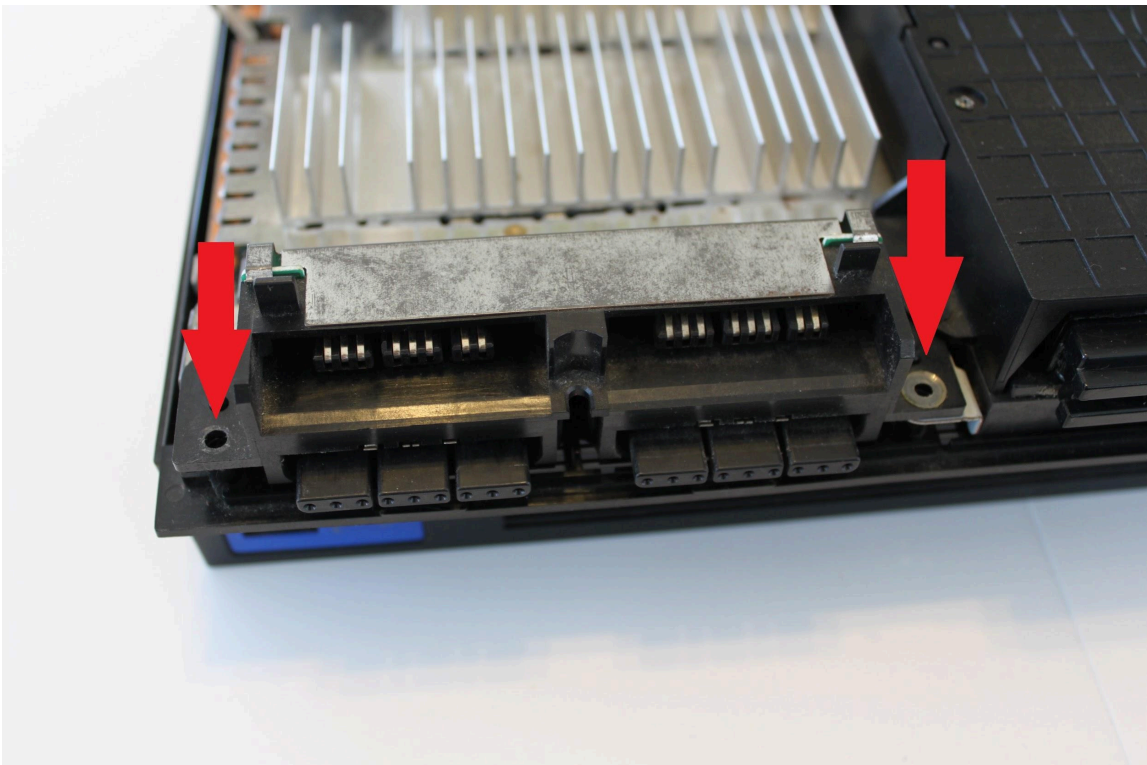
- 24) Slide the power switch assembly down into the back plate. Reinstall the back plate screw.



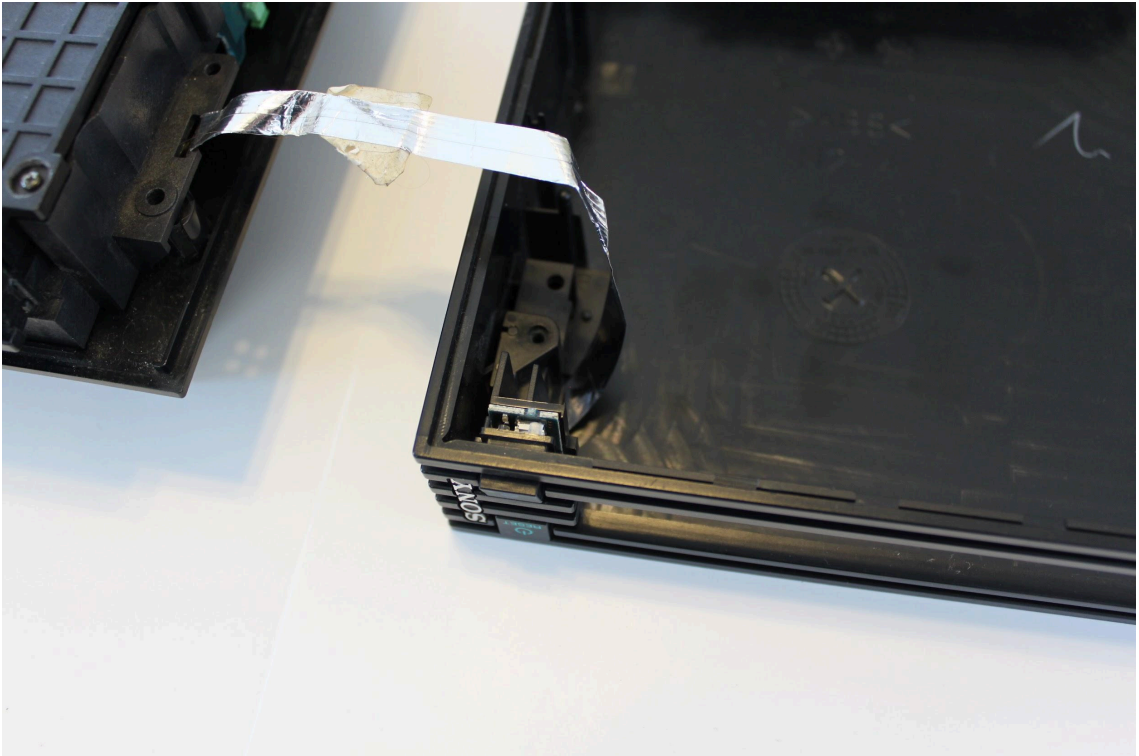
25) Reconnect the ribbon cable to the controller board.



26) Reinstall the controller board and reinstall the two screws.



27) Reinstall the power switch into the upper cover. Slide it into place and push down.



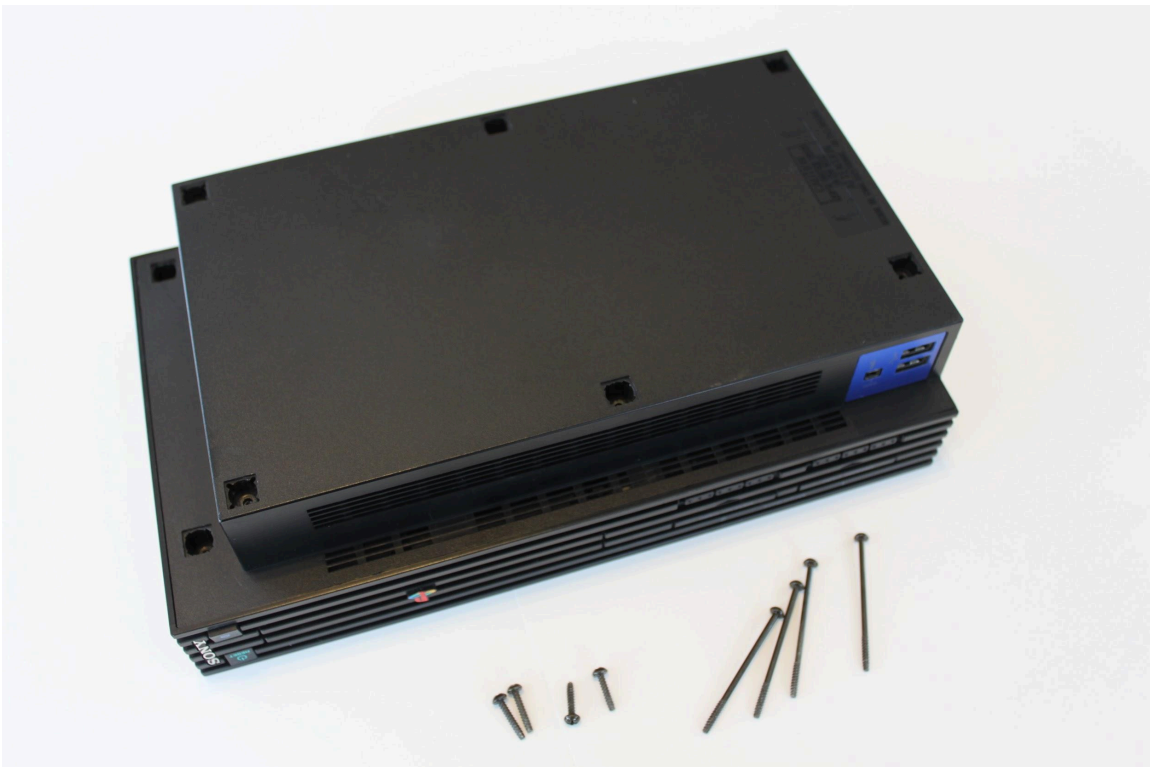
28) Reinstall the top cover. Slide the front cover over the controller ports and cd tray, then angle it down in the reverse order as disassembly.



29) Reinstall the expansion bay blanking plate.



30) Carefully flip the console upside down and reinstall the case screws. The four long screws go on the right, and the four short ones go on the left.



31) Reinstall the rubber feet and the plastic blank pieces.



32) Now, power the machine up and double check that the fan spins. If you have an SCPH-5000X and the normal version of the mod, you will need to plug in the network adapter for the fan to run. If you still have any issues, please contact us for troubleshooting help.

33) Congratulations! You are finished. You can reconnect the power, controllers, etc.

