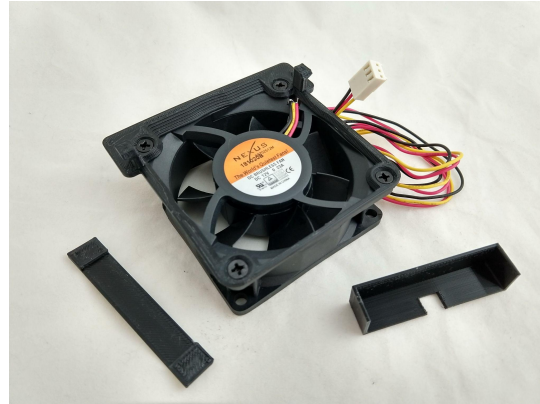


Xbox Quiet Fan Modification Installation Guide

By The Peaceful Outcome



Tools Required:

- T20 torx screwdriver
- T10 torx screwdriver
- Flat bladed screwdriver

1) Take your Xbox and disconnect everything plugged into it (controllers, power cord, etc.)



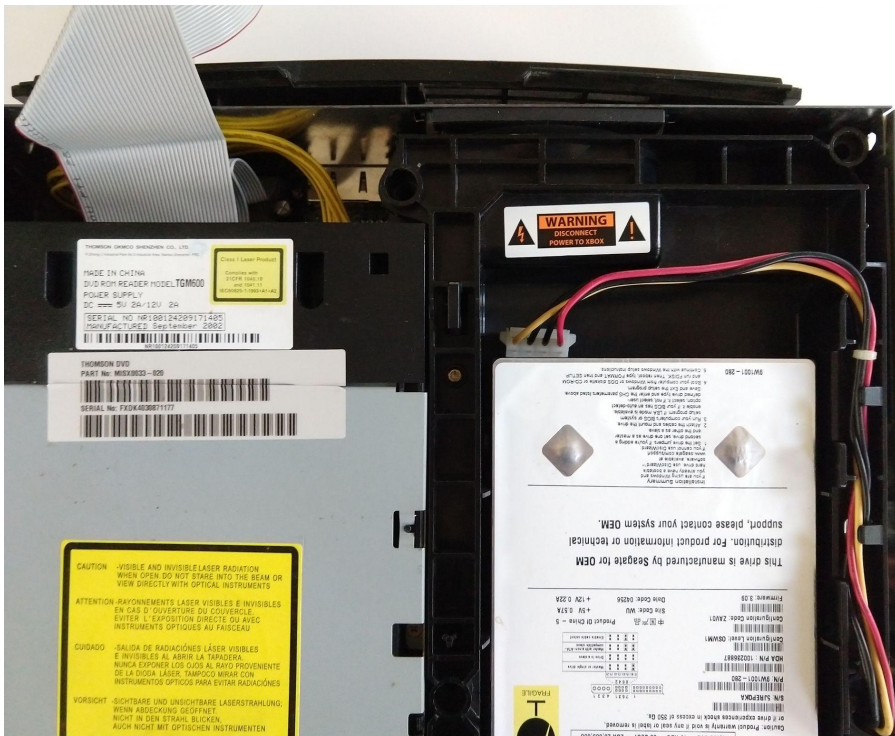
- 2) Turn the console upside down. There are six T20 torx screws to remove. The center two are under stickers. The four on the corners are under the outer side of the rubber feet.



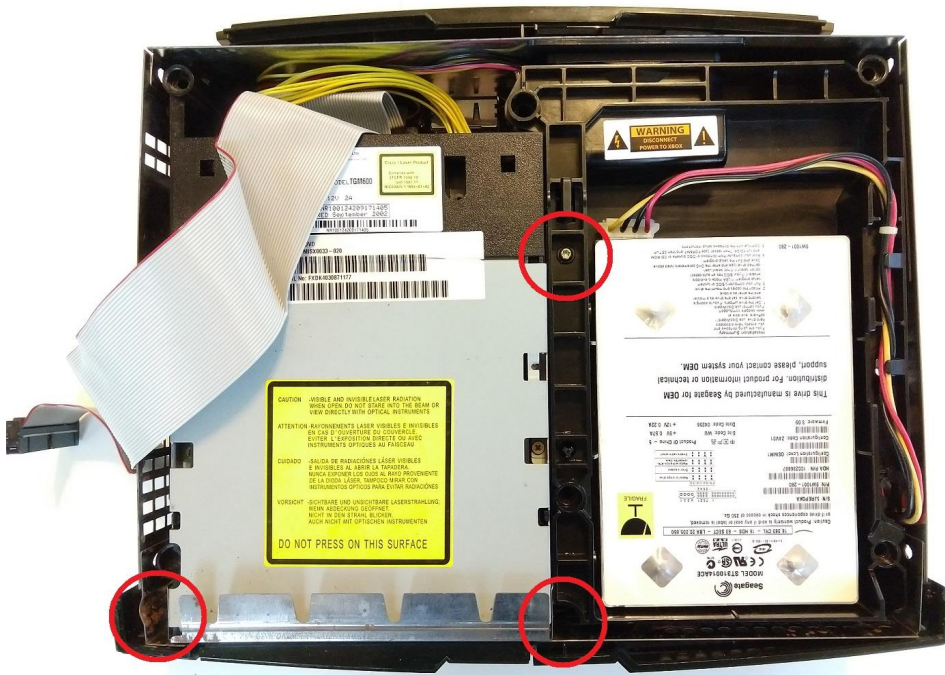
- 3) Turn the console rightside up again. Grab the top half and pull up on it to slide it off of the bottom.



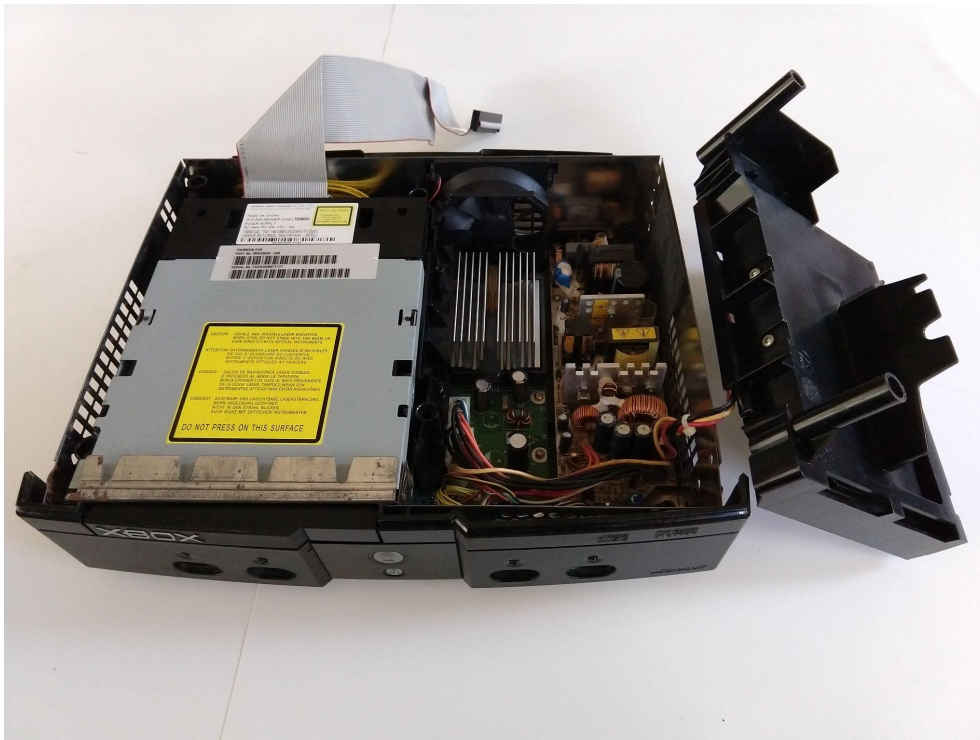
- 4) Remove the grey IDE cable from the back of the hard drive. It pulls straight out of the back of the hard drive. There are no clips.



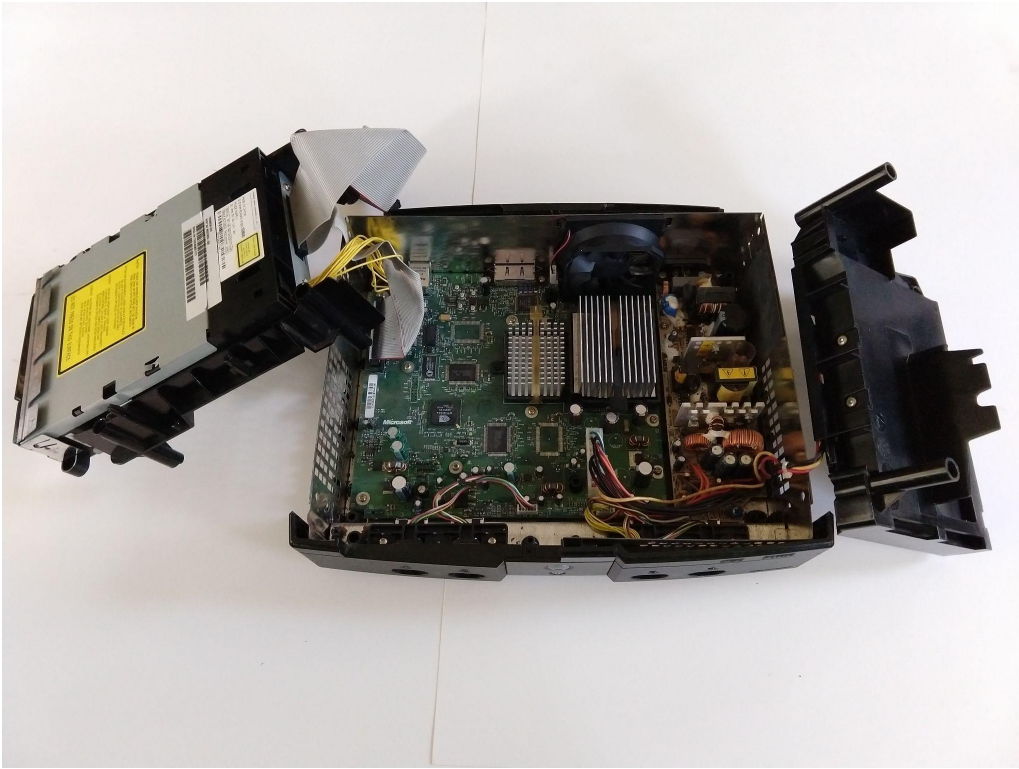
5) Remove three gold colored T10 torx screws from the locations shown below.



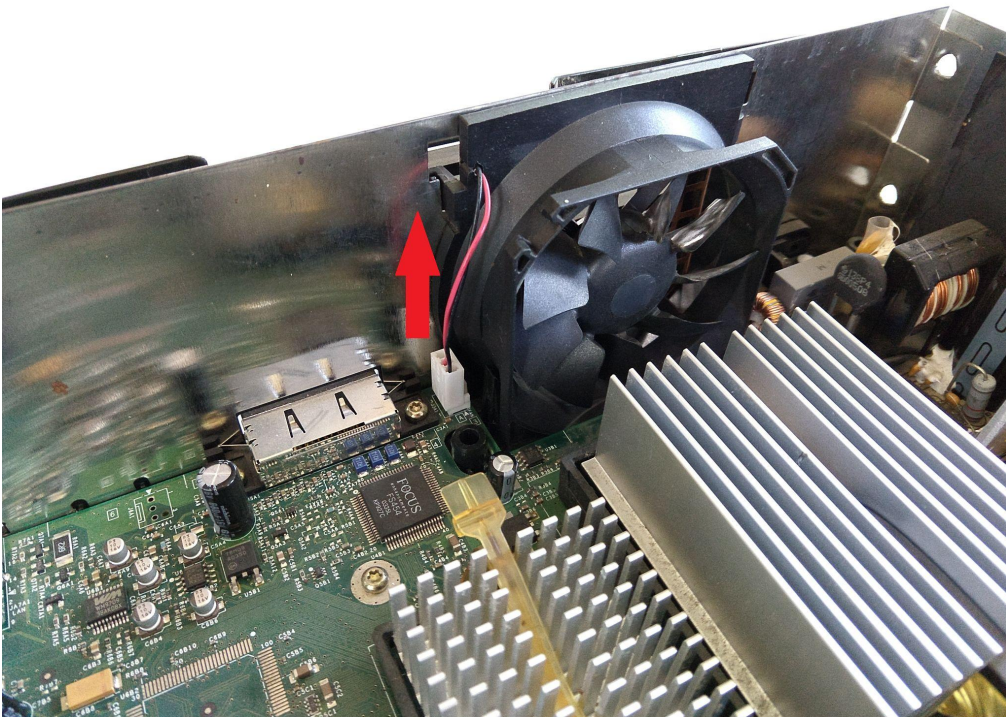
6) Pull up on the hard drive platform and flip it over the side of the Xbox.



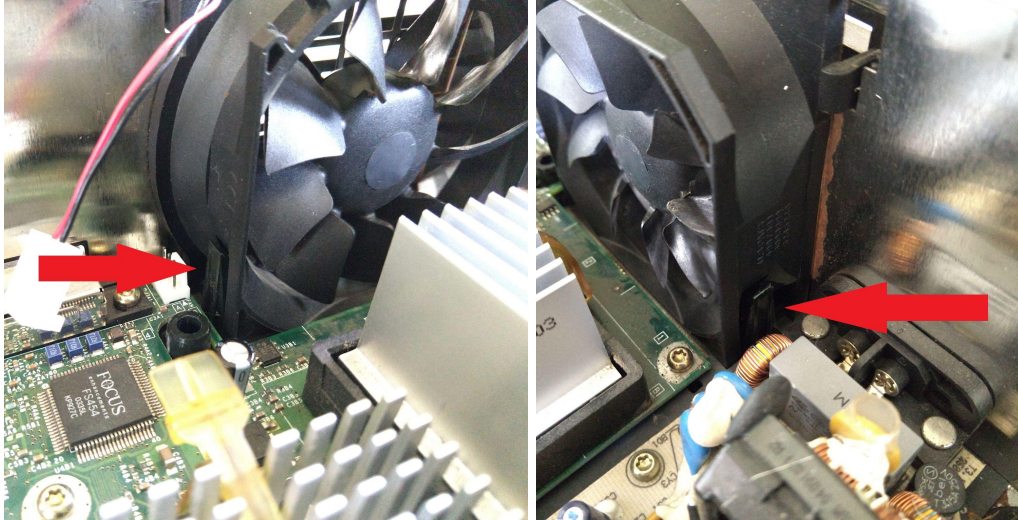
7) Pull up on the optical drive platform and move it over the side of the Xbox.



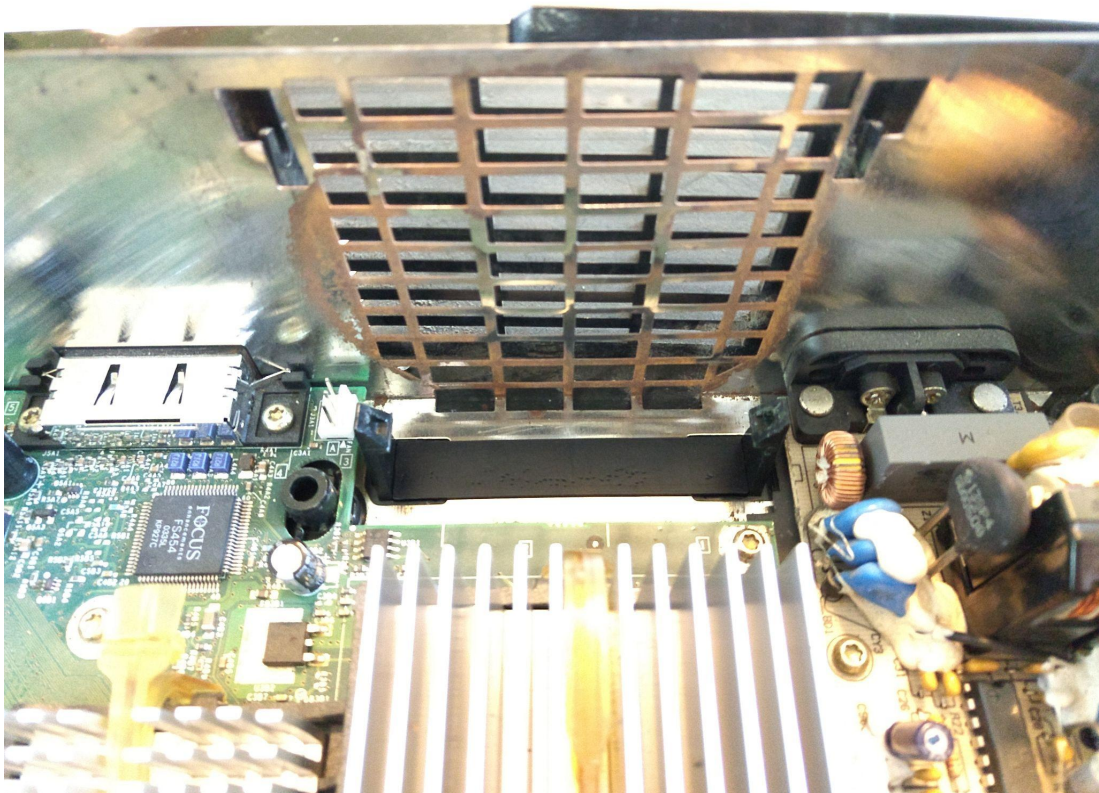
8) Unplug the original fan power connector by pulling up on it.



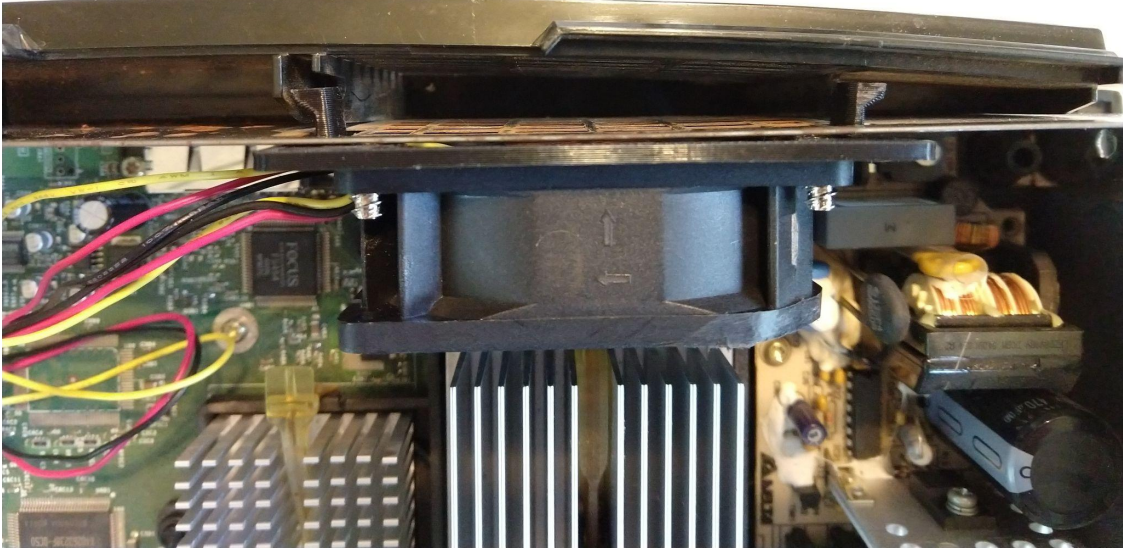
- 9) Locate the tabs on either side of the original fan. Pry one or both of these with a screwdriver while pulling up on the fan. Some force may be needed to release the fan. After the fan pops up a little bit, pull it away from the back of the case to pull the fan tabs through the back plate. This will fully remove the fan.



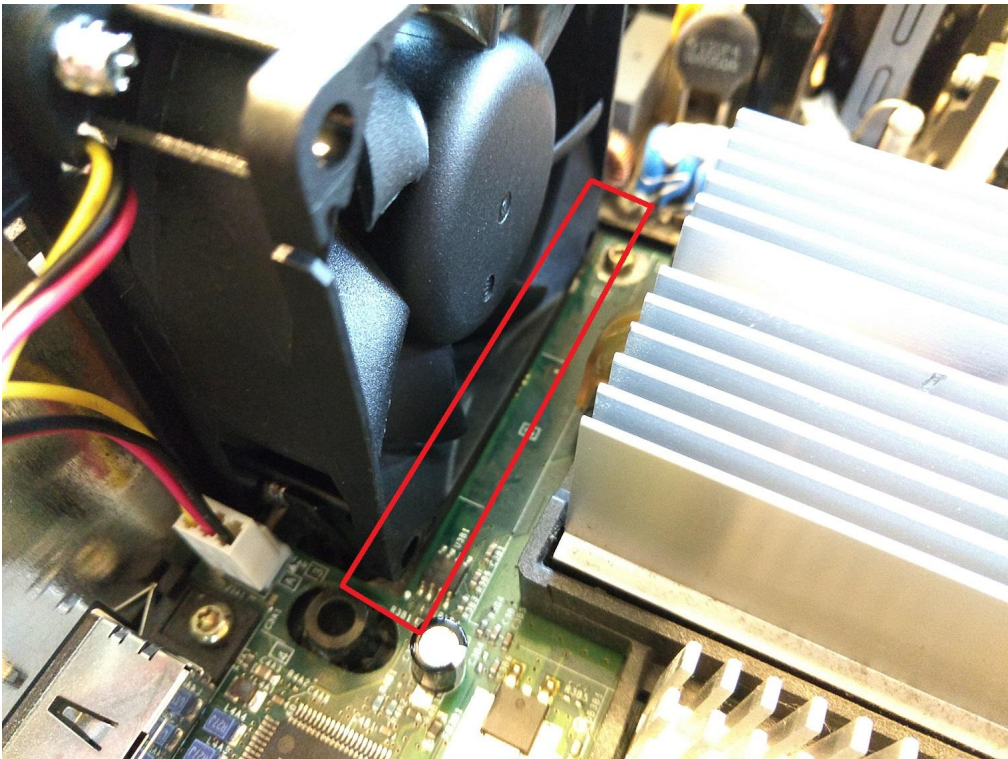
- 10) Grab the new bottom plate and place the side with the two rectangles down into the holes in the bottom of the Xbox.

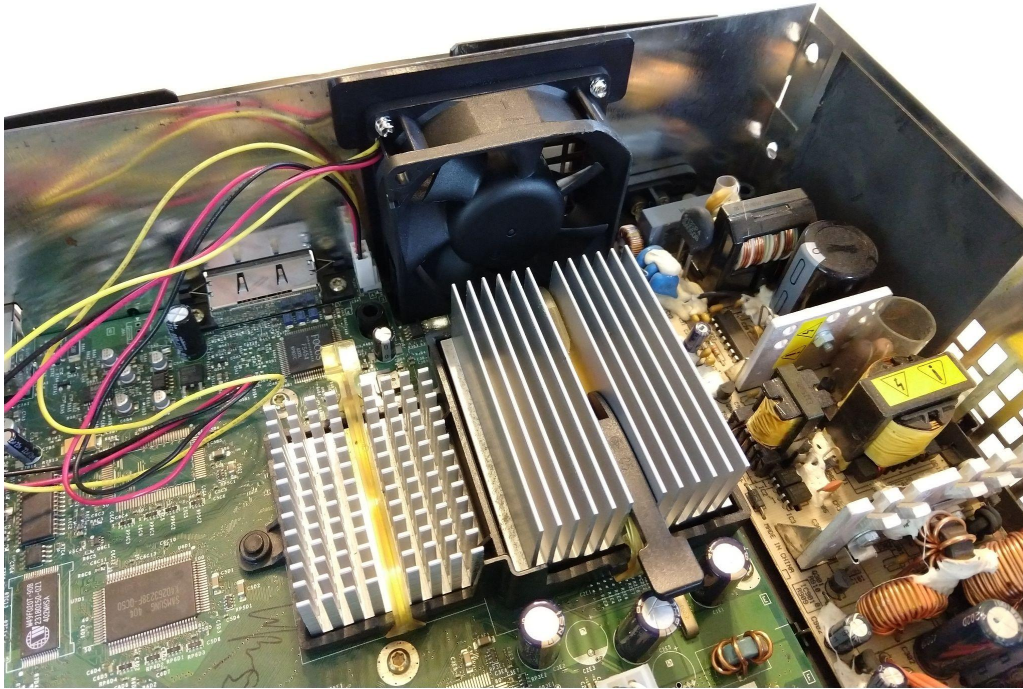


- 11) Grab the new fan and mounting plate assembly. Plug the fan power connector into the Xbox main board. Then, place the tabs on the mounting plate through the back plate of the Xbox.

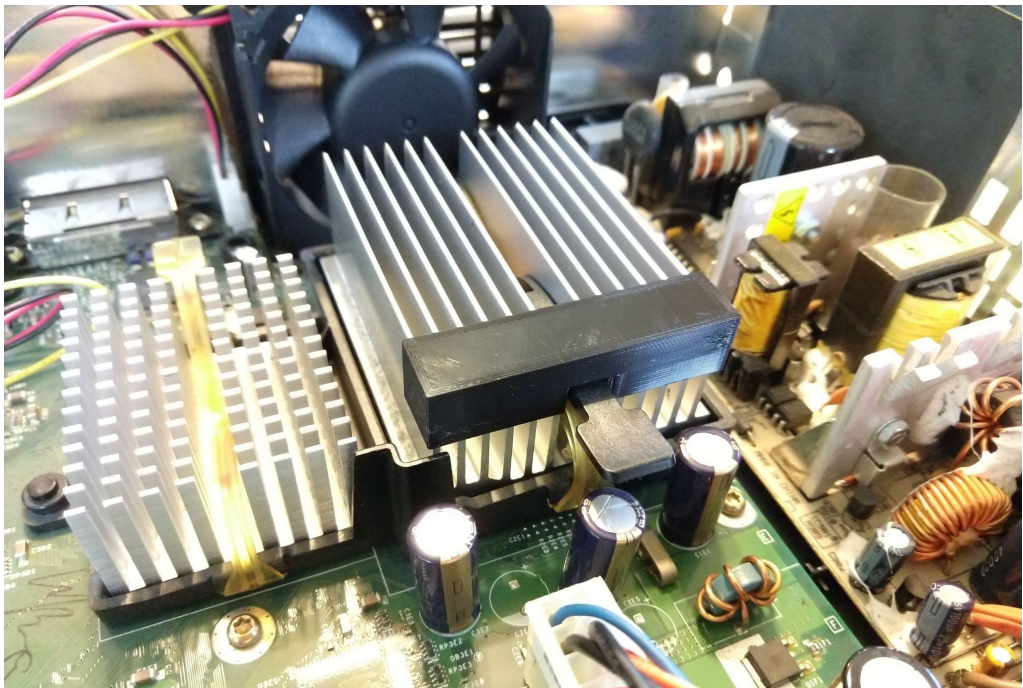


- 12) Push down on the fan assembly to lock it in place. Make sure the fan does not get hung up on the main board. The fit is on the tighter side.





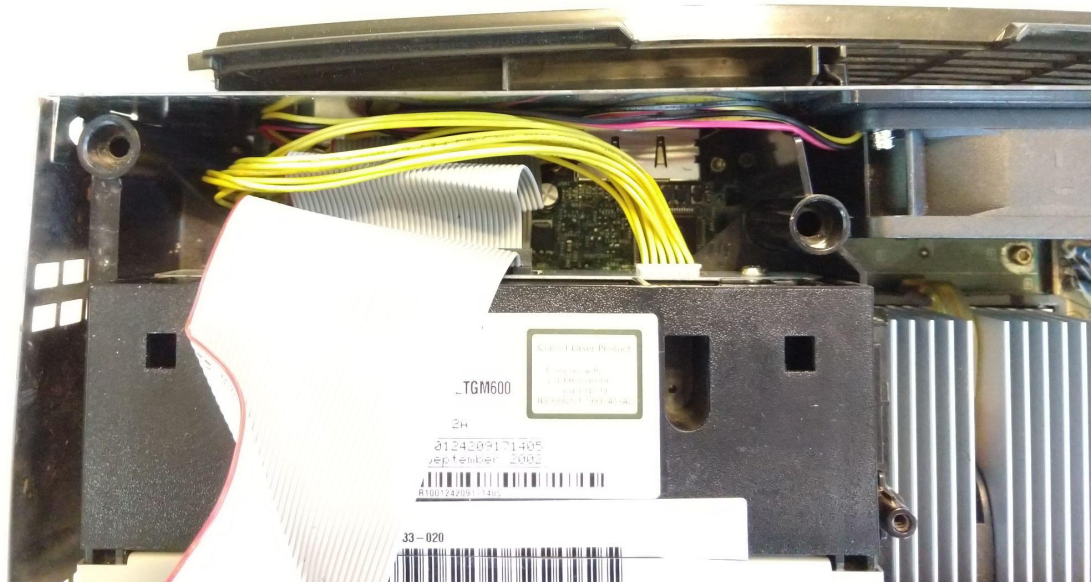
13) Grab the CPU block and place it on the CPU heatsink. This redirects more air over the GPU which runs hotter than the CPU. Oddly enough, this does not actually make the CPU run hotter.



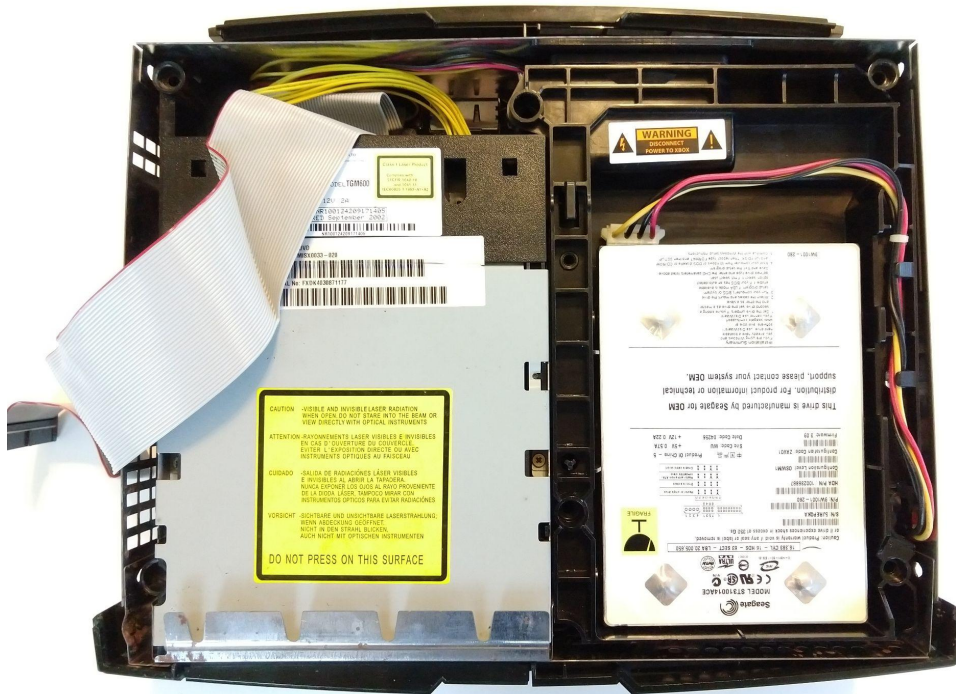
14) Replace the optical drive in the Xbox case.



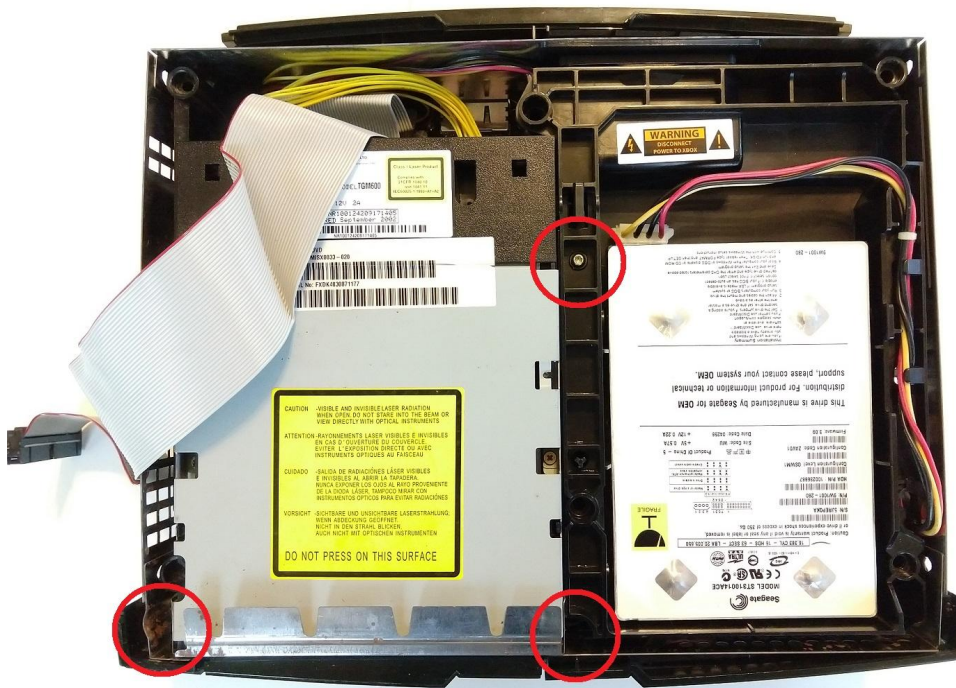
15) Tuck the fan wires back behind the yellow wires for a tidier installation.



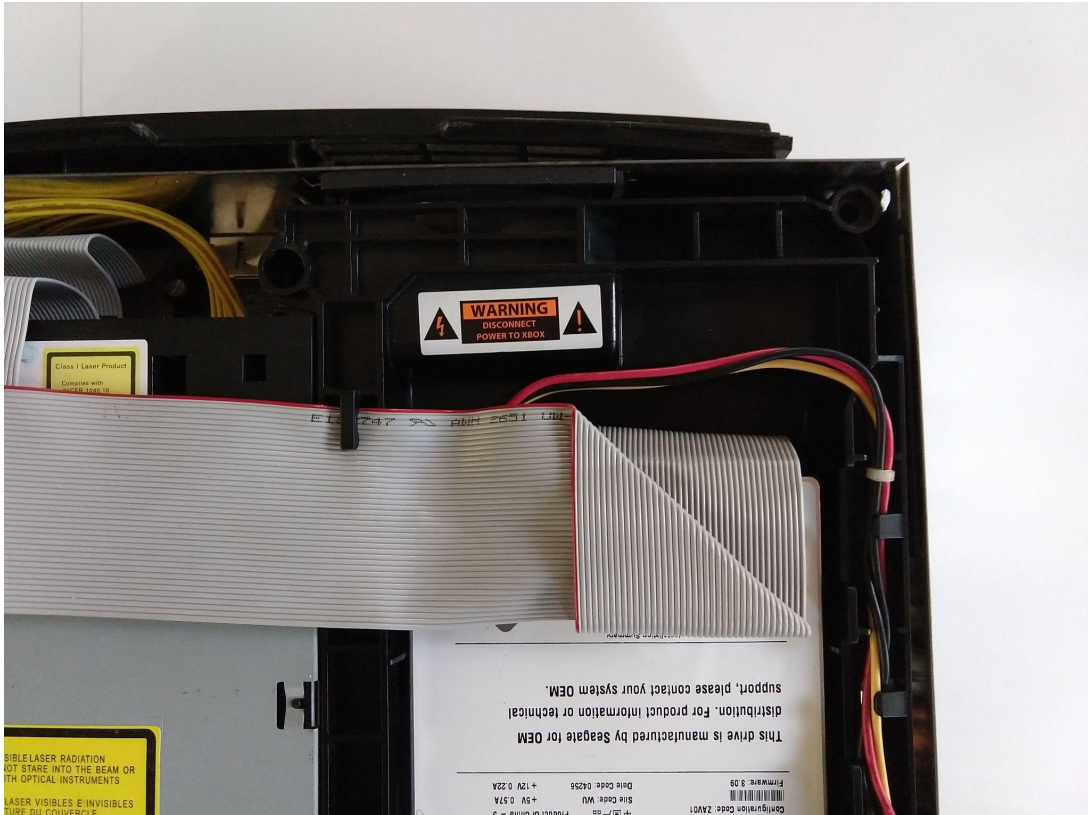
16) Replace the hard drive tray in the Xbox case.



17) Replace the three gold colored T10 torx screws.



18) Plug the grey IDE cable back into the hard drive. Tuck it into the retaining clip.



19) Slide the top cover down on top of the lower half of the Xbox.



20) Flip the Xbox upside down and replace the six T20 torx screws.



21) Congratulations! You are finished. You can reconnect the power, controllers, etc.

