

CATÁLOGO

DE TUBERÍAS ELÉCTRICAS



LIUTONG PLASTICS



Ofrecemos tubería eléctrica de alta calidad para proyectos residenciales, comerciales e industriales. Como distribuidores especializados, garantizamos productos confiables, con dimensiones y pesos precisos, que cumplen con las normas requeridas, asegurando que sus instalaciones eléctricas sean seguras y duraderas.



Tubo Metálico Eléctrico (EMT)

Dimensiones y Pesos del Tubo Metálico Eléctrico de Acero (EMT)

Unidades Pulgada-Libra (in-lb / lb / ft)

| Tamaño Nominal | Diámetro Interior (pulg.) ^a | Diámetro Exterior (pulg.) ^a | Espesor de Pared (pulg.) ^a | Longitud (ft) | Peso Mínimo por 10 Longitudes (lb) |
|----------------|--|--|---------------------------------------|---------------|------------------------------------|
| 1/2" | 0.822 | 0.706 | 0.042 | 10' | 28.9 |
| 3/4" | 0.824 | 0.922 | 0.049 | 10' | 43.5 |
| 1" | 1.049 | 1.163 | 0.057 | 10' | 64 |
| 1-1/4" | 1.380 | 1.810 | 0.065 | 10' | 95 |
| 1-1/2" | 1.810 | 1.740 | 0.065 | 10' | 110 |
| 2" | 2.067 | 2.397 | 0.065 | 10' | 140 |
| 2-1/2" | 2.731 | 2.876 | 0.072 | 10' | 205 |
| 3" | 3.356 | 3.500 | 0.072 | 10' | 250 |
| 3-1/2" | 3.834 | 4.000 | 0.083 | 10' | 325 |
| 4" | 4.334 | 4.500 | 0.083 | 10' | 370 |

Tolerancias Aplicables

Longitud 10ft (3.05m) ± 1/4" (±6.35mm).

Diámetro Exterior: 1/2"-2" ±0.005" (±0.13mm); 2 1/2" ±0.010" (±0.25mm); 3" ±0.015" (±0.38mm); 3 1/2"-4" ±0.020" (±0.51mm)



Conduit Metálico Intermedio (IMC)

Dimensiones de Roscas para Conduit Metálico Intermedio

Unidades Pulgada-Libra (in-lb / lb / ft)

| Tamaño Nominal | Roscas por pulg. | Diámetro de paso en el extremo de la rosca E, cantidad 3/4 pulg. por ft. | Longitud de rosca efectiva L ₂ (pulg.) | Longitud total L ₁ (pulg.) |
|----------------|------------------|--|---|---------------------------------------|
| 1/2" | 14 | 0.7884 | 0.53 | 0.78 |
| 3/4" | 14 | 0.9677 | 0.55 | 0.79 |
| 1" | 11-1/2 | 1.2136 | 0.68 | 0.88 |
| 1-1/4" | 11-1/2 | 1.5571 | 0.71 | 1.01 |
| 1-1/2" | 11-1/2 | 1.7861 | 0.72 | 1.03 |
| 2" | 11-1/2 | 2.2690 | 0.76 | 1.06 |
| 2-1/2" | 8 | 2.7195 | 1.14 | 1.57 |
| 3" | 8 | 3.2406 | 1.20 | 1.63 |
| 3-1/2" | 8 | 3.8375 | 1.25 | 1.68 |
| 4" | 8 | 4.3244 | 1.30 | 1.73 |

Tolerancias Aplicables

Longitud de Rosca (L₁) ± 1 rosca, práctica recomendada: +0, -1

Diámetro del Paso +1 vuelta es la variación máxima permitida desde la cara de calibración de los calibres de rosca en uso.



Conduit Rígido de Acero (RMC)

Dimensiones y Pesos del Conduit Rígido de Acero

Unidades Pulgada-Libra (in-lb / lb / ft)

| Tamaño Nominal | Diámetro Interior (pulg.) ^a | Diámetro Exterior (pulg.) ^a | Espesor de Pared (pulg.) ^a | Longitud sin Conector ^b (ft y en.) | Peso Mínimo de 10 Unidades con Acoplamientos (kg) ^b |
|----------------|--|--|---------------------------------------|---|--|
| 1/2" | 0.632 | 0.840 | 0.104 | 9'11"-1/4" | 78.0 |
| 3/4" | 0.838 | 1.050 | 0.107 | 9'11"-1/4" | 105.0 |
| 1" | 1.063 | 1.315 | 0.126 | 9'11" | 153.0 |
| 1-1/4" | 1.394 | 1.660 | 0.133 | 9'11" | 201.0 |
| 1-1/2" | 1.624 | 1.900 | 0.138 | 9'11" | 249.0 |
| 2" | 2.083 | 2.375 | 0.146 | 9'11" | 332.0 |
| 2-1/2" | 2.489 | 2.875 | 0.193 | 9'10"-1/2" | 527.0 |
| 3" | 3.090 | 3.500 | 0.205 | 9'10"-1/2" | 682.6 |
| 3-1/2" | 3.570 | 4.000 | 0.215 | 9'10"-1/4" | 831.0 |
| 4" | 4.050 | 4.500 | 0.225 | 9'10"-1/4" | 972.3 |
| 5" | 5.073 | 5.563 | 0.245 | 9'10" | 1313.6 |
| 6" | 6.093 | 6.625 | 0.266 | 9'10" | 1745.3 |

NOTAS

1. Tubo Recto
2. Tubo Terminado
3. Las dimensiones interiores no son un requisito. Sin embargo, un conduit que cumpla con el peso y el diámetro exterior requeridos tendrá, de manera nominal, las dimensiones indicadas.

Tolerancias Aplicables

Longitud + 1/4 pulg. (6.35 mm) sin copia

Diámetro Exterior Para tamaños nominales 1/2 (16) hasta 1 1/2 (41); +0.015 pulg. (+0.38 mm)
Para tamaños nominales 2 (53) hasta 6 (155); ±1%





TUBERÍA PVC CONDUIT

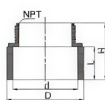
| Tamaño nominal del conduit | Diámetro exterior promedio (Pulg) | Diámetro exterior promedio (MM) | Espesor promedio de pared (Pulg) | Espesor promedio de pared (MM) |
|----------------------------|-----------------------------------|---------------------------------|----------------------------------|--------------------------------|
| 1/2" | 0.84 | 21.34 | 0.12 | 3.05 |
| 3/4" | 1.05 | 26.67 | 0.124 | 3.15 |
| 1" | 1.315 | 33.4 | 0.144 | 3.65 |
| 1-1/4" | 1.66 | 42.16 | 0.152 | 3.85 |
| 1-1/2" | 1.9 | 48.26 | 0.156 | 3.95 |
| 2" | 2.375 | 60.32 | 0.163 | 4.15 |
| 2-1/2" | 2.875 | 73.02 | 0.217 | 5.5 |
| 3" | 3.5 | 88.9 | 0.23 | 5.85 |
| 4" | 4.5 | 114.3 | 0.25 | 6.35 |



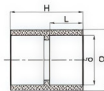
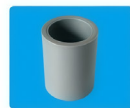
Liutong Plastics / Sistema de Conduit



| CURVA 90° | | | | |
|---------------|------|-------|--------|--|
| Tamaño (pulg) | E | L | R | |
| 1/2" | 3.05 | 38.1 | 101.6 | |
| 3/4" | 3.15 | 38.1 | 114.3 | |
| 1" | 3.65 | 41.65 | 141.95 | |
| 1-1/4" | 3.85 | 50.8 | 184.95 | |
| 1-1/2" | 3.95 | 50.8 | 209.55 | |
| 2" | 4.15 | 50.8 | 241.3 | |
| 2-1/2" | 5.5 | 76.2 | 265.7 | |
| 3" | 5.85 | 79.38 | 330.2 | |
| 4" | 6.35 | 89.21 | 406.4 | |



| ADAPTADORES MACHO | | | | | |
|-------------------|------|-------|------|------|--------|
| Tamaño (pulg) | D | d | L | H | NPT |
| 1/2" | 27.8 | 21.64 | 18.6 | 33.4 | 1/2" |
| 3/4" | 33.3 | 27.02 | 18.3 | 34.0 | 3/4" |
| 1" | 41.3 | 33.78 | 22.7 | 46.1 | 1" |
| 1-1/4" | 49.9 | 42.6 | 24.2 | 47.2 | 1-1/4" |
| 1-1/2" | 51.2 | 48.72 | 27.6 | 50.7 | 1-1/2" |
| 2" | 69.9 | 60.78 | 29.1 | 52.4 | 2" |



| CAMISAS | | | | |
|---------------|------|-------|------|------|
| Tamaño (pulg) | D | d | L | H |
| 1/2" | 27.8 | 21.64 | 16.6 | 36.3 |
| 3/4" | 33.3 | 27.02 | 18.3 | 39.7 |
| 1" | 41.3 | 33.78 | 22.7 | 48.6 |
| 1-1/4" | 49.9 | 42.6 | 24.2 | 51.8 |
| 1-1/2" | 51.2 | 48.72 | 27.6 | 58.2 |
| 2" | 69.9 | 60.78 | 29.1 | 61.4 |

CERTIFICACIONES



CERTIFICATE OF COMPLIANCE

Certificate Number: 20190710-E509823
Report Reference: E509823-20190913
Issue Date: 2019-SEPTEMBER-16

Issued to: Jinan Mech Piping Technology Co Ltd
MeiJia Zone of Industrial Park
Pingyin, Shandong 250400 CHINA

This certificate confirms that representative samples of
INTERMEDIATE FERROUS METAL CONDUIT
UL Steel Intermediate metal conduit, trade sizes 1/2, 3/4, 1, 1-1/4, 1-1/2, 2, 2-1/2, 3, 3-1/2, and 4.
Steel intermediate metal conduit elbows, trade sizes 1/2, 3/4, 1, 1-1/4, 1-1/2, 2, 2-1/2, 3, 3-1/2, and 4.
Steel intermediate metal conduit couplings, trade sizes 1/2, 3/4, 1, 1-1/4, 1-1/2, 2, 2-1/2, 3, 3-1/2, and 4.
Steel intermediate metal conduit nipples, trade sizes 1/2, 3/4, 1, 1-1/4, 1-1/2, 2, 2-1/2, 3, 3-1/2, and 4.

Have been investigated by UL in accordance with the Standard(s) indicated on this Certificate.

Standard(s) for Safety: UL 1242 - Electrical Intermediate Metal Conduit - Steel
See the UL Online Certifications Directory at <http://www.ul.com/database> for additional information.

This Certificate of Compliance does not provide authorization to apply the UL Mark. Only the UL Follow-Up Services Procedure provides authorization to apply the UL Mark.

Only those products bearing the UL Mark should be considered as being UL Certified and covered under UL's Follow-Up Services.

Look for the UL Certification Mark on the product.



CERTIFICATE OF COMPLIANCE

Certificate Number: 20180117-E497261
Report Reference: E497261-20171212
Issue Date: 2018-JANUARY-17

Issued to: Jinan Mech Piping Technology Co Ltd
MeiJia Zone of Industrial Park
Pingyin, Shandong 250400 CHINA

This is to certify that representative samples of
ELECTRICAL METALLIC TUBING
UL Electrical Metallic Tubing, trade sizes 1/2, 3/4, 1, 1-1/4, 1-1/2, 2, 2-1/2, 3, 3-1/2 and 4.
Steel Electrical metallic tubing elbows 15°, 22.5°, 30°, 45°, 90°, trade sizes 1/2, 3/4, 1, 1-1/4, 1-1/2, 2, 2-1/2, 3, 3-1/2 and 4.

Have been investigated by UL in accordance with the Standard(s) indicated on this Certificate.

Standard(s) for Safety: UL 797 & CSA C22.2 No. 83.1-07
Standard for Electrical Metallic Tubing - Steel
See the UL Online Certifications Directory at www.ul.com/database for additional information.

Only those products bearing the UL Certification Mark should be considered as being covered by UL's Certification and Follow-Up Service.

Look for the UL Certification Mark on the product.



CERTIFICATE OF COMPLIANCE

Certificate Number: 20190112-E487241
Report Reference: E487241-20171212
Issue Date: 2018-JANUARY-12

Issued to: Jinan Mech Piping Technology Co Ltd
MeiJia Zone of Industrial Park
Pingyin, Shandong 250400 CHINA

This is to certify that representative samples of
RIGID FERROUS METAL CONDUIT
SEE ADDENDUM PAGE FOR MODELS

Have been investigated by UL in accordance with the Standard(s) indicated on this Certificate.

Standard(s) for Safety: UL 6 & CSA-C22.2 No.45.1-07 Standard for Electrical Rigid Metal Conduit - Steel
See the UL Online Certifications Directory at www.ul.com/database for additional information.

Only those products bearing the UL Certification Mark should be considered as being covered by UL's Certification and Follow-Up Service.

Look for the UL Certification Mark on the product.



Safety. Science. Transformation.™

2025-07-31

ZHUANGZHI ZHENG
ZHEJIANG LIUTONG PLASTIC CO., LTD
No.6 Gongxin Ave. West Industrial Area Huangshan
Taizhou, Zhejiang, 318020, CN

Notice of Completion (NOC) and requirement for Initial Production Inspection (IPI)

Your reference: File E542365, Volume 1
Order: 1536932
Project: 479739568

Project scope: UEL - Rigid PVC Conduit, Schedule 40 in the 1/2, 3/4, 1, 1-1/4, 1-1/2, 2, 2-1/2, 3, 4, 6 trade sizes
Rigid PVC Conduit, Schedule 40 with integral coupling in the 1/2, 3/4, 1, 1-1/4, 1-1/2, 2, 2-1/2, 3, 4, 6 trade sizes.
Rigid PVC Conduit Elbow, Schedule 40 in the 1/2, 3/4, 1, 1-1/4, 1-1/2, 2, 2-1/2, 3, 4 trade sizes.

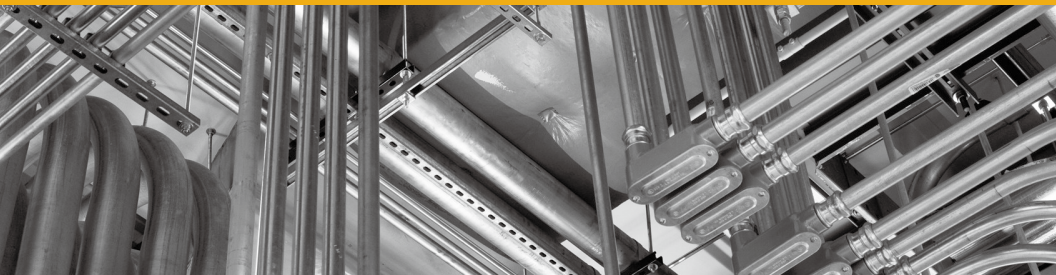
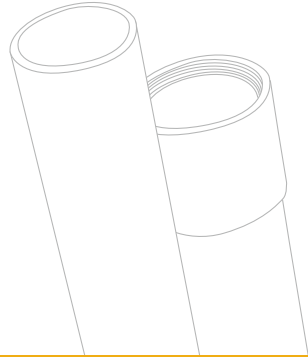
Dear Zhuangzhi Zheng:

We appreciate that you have a choice of certification providers and thank you for choosing UL Solutions. We have completed the investigation under the above project and confirmed compliance of your product(s) with UL Mark requirements.

Before products bearing the UL Mark can leave the manufacturing location, an Initial Production Inspection (IPI) must be successfully completed by a UL Solutions representative at the manufacturing location(s) noted below. You are required to send a copy of this letter to each of these manufacturing location(s).

| | | | |
|--------------------|-----------------------------------|--------------------|-----------------|
| Manufacturer Name: | ZHEJIANG LIUTONG PLASTIC CO., LTD | Inspection center: | IC 325 |
| Party site number: | 595678 | Region: | Hangzhou, China |
| Account number: | 318337 | Contact: | - |
| Factory ID: | - | E-mail: | - |
| Country: | China | Phone: | - |

The IPI is a check on the means that the manufacturer has in place to produce a product in accordance with applicable requirements. A manufacturer may not ship products with the UL Mark until the IPI has been successfully completed. Instructions for conducting the IPI will be sent to the UL Solutions inspector center(s).



Contáctanos:

9443-3515 | ventas1@mepdepot.com | www.mepdepot.com

f MEP DEPOT @ mep.depot in MEP DEPOT