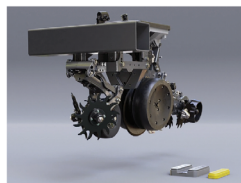


PLANTER ROW UNIT DEPTH CALIBRATION TOOL

Quickly and accurately sets planter depth to specific depths between 1"-2.5"
(No more guessing what depth the planter is set at!)

Creates a consistent depth across each row calibrated, eliminating variation caused by planter wear on disk openers, rocker arms, and gauge wheel arms



STEP 1

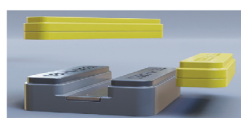
ON LEVEL GROUND, RAISE THE PLANTER 1 FT. FROM THE SURFACE



STEP 2

BRING THE T HANDLE TO THE DEEPEST SETTING

HELPFUL TIP - CALIBRATING ROW UNIT DEPTH CAN BE PERFORMED ANYWHERE THAT HAS EVEN GROUND, EVEN OUT IN THE FIELD!



STEP 3

SET YOUR DESIRED PLANTING DEPTH BY UTILIZING THE 1" MAIN BLOCK OR BY ADDING THE 1/2 IN. STACKS TO INCREASE DEPTH.



STEP 4

LOWER PLANTER UNIT DOWN ONTO SET-N-SEED OR RAISE SET-N-SEED UP UNTIL PLANTER UNIT RISES

HELPFUL TIP - FASTEST WAY TO SET ROW UNIT DEPTH IS BY UTILIZING A FLOOR JACK TO LIFT THE SET-N-SEED UNIT UP UNTIL THE ENTIRE ROW UNIT IS LIFTED UP.



STEP 5

BRING T HANDLE TO THE SHALLOWEST SETTING. DISK OPENERS WILL BE CENTERED ON THE PROTECTIVE PLATE WHILE THE GAUGE WHEELS WILL HAVE PRESSURE ON THE SIDE RAILS.

HELPFUL TIP - DEPENDING ON ACRES PLANTED AND SOIL TYPE, ROW UNIT WEAR MAY BE UNEVEN CAUSING VARIABLE DEPTH. EACH ROW WILL NEED TO BE CALIBRATED TO ENSURE EACH ROW IS PLANTING AT THE CORRECT DEPTH.

DEPTH IS NOW SET! PROCEED TO NEXT ROW UNIT.

AVOID HIDDEN YIELD LOSS:

THE SAME DEPTH SETTING DOESN'T MEAN THE SAME DEPTH
EVEN WHEN SET TO THE SAME DEPTH SETTING, THE ACTUAL PLANTING DEPTH ACROSS A PLANTER CAN VARY BY UP TO A 1/2 IN BECAUSE OF MANUFACTURING VARIANCE AND WEAR.

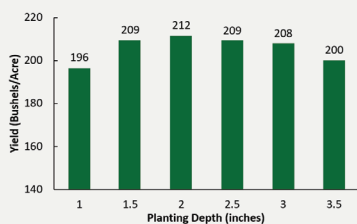


FIGURE 1.
AVERAGE GRAIN YIELD ACROSS 22 LOCATIONS FROM 2016 TO 2020.

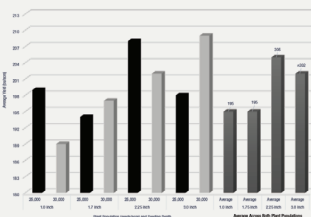


FIGURE 2.
CORN YIELD PERFORMANCE AVERAGED ACROSS 3 CORN PRODUCTS PLANTED AT 2 DIFFERENT POPULATIONS AND 4 DIFFERENT DEPTHS. BEATRICE, NE 2021.

Made and
Assembled in the
USA utilizing Local
Companies



@SET-N-SEED



WWW.SETNSEED.COM

PATENT PENDING

618-538-1991