

Revolutionizing Precision in Planting Depth Calibration

Innovation in the agriculture sector often stems from the minds of those deeply rooted in the fields. One such visionary, Blake Patton, has brought a game-changing solution to the forefront with Set-N-Seed, a depth calibration tool that has redefined precision in planting depth for farmers across the globe.



Workshop

A tinkering journey to innovation

Blake Patton embarked on the path to revolutionize the way farmers approach planting depth. Fueled by the need for a more efficient solution, Patton's Set-N-Seed was born out of a desire to simplify the process of setting planter depth row-to-row.

The journey began when Patton, faced with the challenge of achieving uniformity in planting depth, sought to move beyond the traditional methods involving 4x4 blocks. The realization struck him that a more sophisticated approach was needed, one that actively set the depth instead of merely checking it.

"I put together a jig using wood 4x4's on plywood, and the process was super-easy," recalls Patton. "I thought to myself that I might be onto something here."

The Set-N-Seed advantage

Set-N-Seed operates by creating a consistent distance between the bottom of the gauge wheels and the bottom of the disk opener using pre-measured blocks. The tool simplifies the calibration process, ensuring precise planting depths between 1 inch and 2.5 inches.

The revolutionary tool's simplicity is its strength. With a straightforward five-step process, farmers can achieve accurate and uniformed planting depth across each row, eliminating variations caused by planter wear on disk openers, rocker arms and gauge wheel arms.

The Set-N-Seed advantage becomes apparent in its efficiency. Farmers can now set the planter depth quickly and easily, saving valuable time in the critical planting season.

Set the planter depth quickly and easily, saving valuable time in the critical planting season.

Local innovation, global impact

Beyond its innovative functionality, Set-N-Seed carries a unique advantage that sets it apart—a purposeful assembly process. All Set-N-Seed units get assembled, boxed up and palletized at the Washington County (Illinois) Vocational Workshop—a unique employer that provides opportunities for

disabled individuals.

Patton's invention didn't stay confined to his local community. Set-N-Seed quickly gained attention and acclaim, surpassing initial sales projections in the first month and a half of its launch. Its appeal resonated not only across the United States but globally, with farmers from California to Maine, North Dakota to Texas, and even as far as Australia expressing interest.

Made in the USA, rooted in local support

A noteworthy aspect of Set-N-Seed is its commitment to being a product of the USA. Every component, from nuts and bolts to shipping boxes, is sourced within a 30-mile radius of Patton's hometown in Illinois, except for the plastic mold injection, which comes from Detroit.

'Not only is it made in the USA, it is made right in my hometown,' Patton proudly affirms.

Looking ahead: expanding possibilities

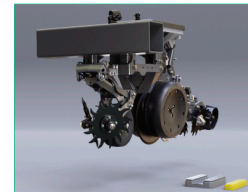
Set-N-Seed's success story is far from over. In the last quarter of 2023, Patton released two new adaptors, offering farmers even more precision in depth calibration. These adaptors will allow for setting planting depth from 1/2 inch to 3 inches, further enhancing the tool's versatility.

As the Set-N-Seed journey continues, Blake Patton expresses gratitude to his supporters, including his wife Ericka Patton and mother Cissy Patton, who played crucial roles in providing unwavering support and inspiration.

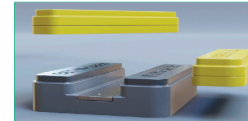
Blake Patton's journey from a local tinkerer to a global innovator showcases the transformative power of an idea rooted in the needs of the farming community. Set-N-Seed is a testament to the potential for positive change when passion, ingenuity and local support come together on the fertile grounds of innovation.

Learn more

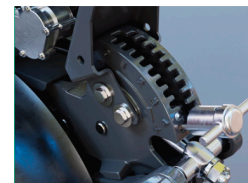
If you're interested in learning more, Set-N-Seed can be reached at 618-538-1991 or by email at info@setnseed.com. To explore its products, visit setnseed.com/.



Raise Planter



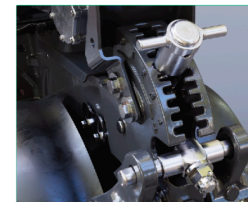
Set-N-Seed Depth



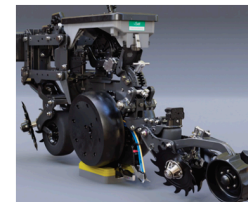
Deepest Setting



Lower Unit



Adjust Depth to shallowest setting



Done