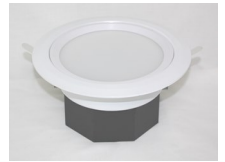
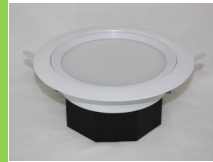


# astrid series

## down lights



Style	Frosted Lens					COB Lens		
Size	4"	5"	6"	8"		4"	6"	8"
Wattage	8W	12W	15W	20W	25W	8W	15W	30W
Input Voltage	90-306V AC							
Color Temp	5000K							
Lumens	600lm	990lm	1200lm	1500lm	1900lm	600lm	1200lm	2200lm



### Features:

- Patent Design is unique in the Lighting Market
- cULus Certified Product
- Pure Aluminum material
- Great Heat-Dissipation
- Trey ranges from 4-8"
- Available in Frosted and Chip on Board



# caruba

## 3" gimbal



### Features

- 1 3/4" Thin
- Air Tight
- Type IC Rated; no housing needed
- Easy to Install
- Driver is found inside the connection box
- Directional Beam
- It's body is made of die cast aluminum alloy for ideal heat dissipation

Application	Sloped ceilings and highlighting artwork or accent pieces	
Energy Used	7.5W	
Color Temp	3000K	4100K
Light Output	600lm	650lm
Halogen	50W	
Beam Angle	40° beam with 30° tilt and a 360° rotation	
CRI	84	82
Driver Input	120V AC or 277V-347V AC 50/60Hz	
Power Factor	0.98	
Dimming	TRIAC Dimmers 10%-100%	
Approved Locations	Insulated Ceilings and Damp Locations	
Air Tight	Yes	
Certification	cETLus and energystar	

