

## **Historic, archived document**

Do not assume content reflects current scientific knowledge, policies, or practices.



91.15  
EL5

# THE VICTORY GARDEN GUIDE

Planting Date — How to Plant — Proper Care  
Insects and Their Control



10  
BY ALVA ELLIS  
APRIL 1944



Copyright 1945  
By Alva Ellis

INV. 6 1945

UNITED STATES  
DEPARTMENT OF AGRICULTURE  
LIBRARY



BOOK NUMBER 91.15  
E15  
538461

820 8-7871

AGRICULTURE  
LIBRARY











AGRICULTURAL EXHIBIT — JACKSON COUNTY FAIR



## I N T R O D U C T I O N

The information in this "Guide" is taken from the notes and data compiled by Mr. Ellis, who, for a period of twenty-seven years has been Supervisor at the "State Farm," State Prison of Southern Michigan—Jackson, Michigan.

He has won many "Blue Ribbons" with exhibitions of his garden produce at State and County Fairs, and has also merited great acclaim for the heavy yields his crops bring.

For each item, he has given you the following information. "Planting Date," "How to Plant," "Proper Care," and "Insects and their Control."

Also given are figures on the size of garden you should plan on raising, according to the size of your family. How much you should can for each member of the family for a season and a list of crops that take the least effort to raise but have the greatest nutritional value.

L. G. DUPLICATE  
EXCHANGE PERMITTED

©CIA A 485326

JUN - 7 1945



# INDEX

	<b>Page</b>
Size and what to plant.....	1
Asparagus .....	2
Beans .....	2
Beets .....	3
Broccoli .....	3
Brussel Sprouts .....	5
Cabbage .....	5
Carrot .....	6
Cauliflower .....	6
Celery .....	7
Chinese Cabbage .....	7
Collards .....	8
Cucumber .....	8
Dill .....	9
Egg Plant .....	9
Endive .....	10
Kale .....	10
Kohlrabi .....	11
Leek .....	11
Lettuce .....	12
Melons .....	12
Mustard .....	14
Okra .....	14
Onions .....	15
Parsley .....	16
Parsnips .....	16
Peas .....	15
Peppers .....	18
Pumpkin .....	18
Radish .....	19
Rhubarb .....	19
Rutabaga .....	20
Salsify .....	20
Spinach .....	21
Squash .....	21
Sweet Corn .....	22
Sweet Potato .....	22
Swiss Chard .....	23
Tomato .....	23
Turnips .....	24





## THE VICTORY GARDEN GUIDE

For a family of two (2) a garden 25'x50' will amply supply them with all essential vegetables. Aside from Sweet Corn and Potatoes.

For a family of two (2) adults and two (2) children or three (3) adults a garden 50'x100' will be plenty.

They should be intensely cultivated and average about 18" between the rows.

In canning you should plan on putting up from eighty-five (85) to one-hundred and fifteen (115) quarts for each member of the family for a season.

The following list of vegetables to raise, are the best for the small garden. They require the least effort and have great nutritional value.

Beets	Cabbage	Onions	Tomatoes
Beans	Carrots	Peppers	Turnips
Broccoli	Lettuce	Swiss Chard	Winter Squash

\* Peas

\*—Call for higher labor but require only short season. If planted before May 1st, they will be out and another crop can be planted in their place by the middle of June. Beets, Lettuce or Carrots may follow.

## THE VICTORY GARDEN GUIDE

### ASPARAGUS

- Planting Date** . . . . . FALL: Just before freezing weather sets in.  
SPRING: Soon as frost is out of ground.
- How To Plant** . . . . . Use 2 to 4 year old Roots, set out 12" to 14" apart  
in the row; 4 feet between rows; Set about 8" deep.
- Proper Care** . . . . . Salt and Brine will keep the weeds and grass down  
and your Asparagus will be much better.  
Leave in the ground indefinitely, cover in the winter  
with good rotten manure.
- Insects, Control** . . . . . Seldom bothered

#### Data:

Date Planted . . . . .  
Amount Canned . . . . .  
Meals Served . . . . .  
Cost . . . . .

### BEANS

- Planting Date** . . . . . EARLY: April 1st to 15th.  
LATE: April 15th to May 1st.
- How To Plant** . . . . . Sow 1 1/2" to 2" deep; 18" between rows for bush;  
36" between rows for pole.
- Proper Care** . . . . . Thin to stand 4" to 8" apart in the row.
- Insects, Control** . . . . . MEXICAN BEAN BEETLE: Use Rotenone, pyrethrum  
or cryolite.

#### Data:

Date Planted . . . . .  
Amount Canned . . . . .  
Meals Served . . . . .  
Cost . . . . .



# THE VICTORY GARDEN GUIDE

## BEETS

- Planting Date** . . . . . EARLY: April 1st to July 15th.  
LATE: April 15th to August 15th.
- How To Plant** . . . . . Sow 1/2" to 1" deep; 14" to 28" between rows.
- Proper Care** . . . . . Keep well cultivated.  
Greens: When plants are 5" to 8" tall.  
Roots: Begin using when 1" to 2" in diameter.
- Insects, Control** . . . . Seldom bothered.

### Data:

- Date Planted . . . . .
- Amount Canned . . . . .
- Meals Served . . . . .
- Cost . . . . .

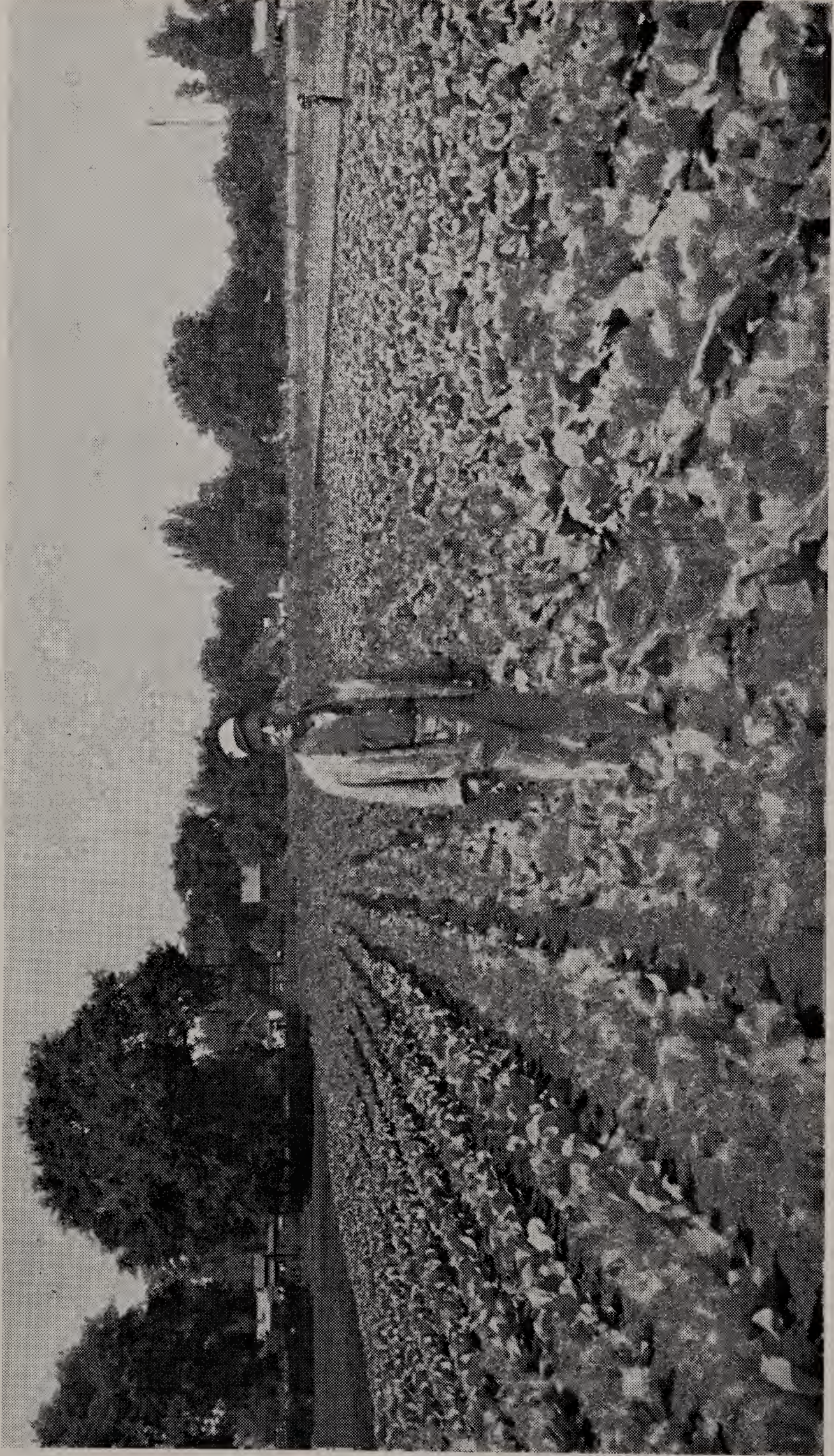
## BROCCOLI

- Planting Date** . . . . . April 1st to April 15th.
- How To Plant** . . . . . Sow 1/4" to 1/2" deep; 28" to 30" between rows.
- Proper Care** . . . . . This to stand about 12" apart in the row, use good fertilizer along the sides of the row. Keep well cultivated.
- Insects, Control** . . . . Same as Cabbage.

### Data:

- Date Planted . . . . .
- Amount Canned . . . . .
- Meals Served . . . . .
- Cost . . . . .





EARLY CABBAGE



## THE VICTORY GARDEN GUIDE

### BRUSSEL SPROUTS

**Planting Date** . . . . . April 1st to 15th.

**How To Plant** . . . . . Sow  $\frac{1}{4}$ " to  $\frac{1}{2}$ " deep; 28" to 30" between rows.

**Proper Care** . . . . . Thin to stand about 26" apart in the rows.

**Insects, Control** . . . . Same as Cabbage.

#### **Data:**

Date Planted . . . . .

Amount Canned . . . . .

Meals Served . . . . .

Cost . . . . .

### CABBAGE

**Planting Date** . . . . . EARLY: Start inside, April 15th to May 1st.  
LATE: May 1st to May 15th.

**How To Plant** . . . . . EARLY: Set out May 10th to 15th. 18" to 24" apart.  
LATE: Sow  $\frac{1}{4}$ " to  $\frac{1}{2}$ " deep; 30" apart. If blocked or thinned out leave standing 30" apart.

**Proper Care** . . . . . Keep hoed and well watered if possible.

**Insects, Control** . . . . CABBAGE WORM: Use Rotenone or Talc, 15 lbs. to 5 lbs. Nicotine Sulphate.  
APHIS: Use Nicotine dust or spray, 1 lb. Nicotine to 5 gallons water.

#### **Data:**

Date Planted . . . . .

Amount Canned . . . . .

Meals Served . . . . .

Cost . . . . .

## THE VICTORY GARDEN GUIDE

### CARROT

- Planting Date** . . . . . EARLY: April 1st to 15th.  
LATE: July 15th to August 15th. .
- How To Plant** . . . . . Sow 1/2" to 1" deep; 14" to 28" between rows.  
May follow Peas, Spinach, Radish or Lettuce.
- Proper Care** . . . . . Use good commercial fertilizer along sides of row.
- Insects, Control** . . . . Seldom bothered.

#### Data:

Date Planted . . . . .

Amount Canned . . . . .

Meals Served . . . . .

Cost . . . . .

### CAULIFLOWER

- Planting Date** . . . . . Start indoors, April 15th to May 1st.
- How To Plant** . . . . . Set out about May 15th; 18" to 24" apart; 24" between rows.
- Proper Care** . . . . . Keep well cultivated.  
Keep watered if possible.
- Insects, Control** . . . . Same as Cabbage.

#### Data:

Date Planted . . . . .

Amount Canned . . . . .

Meals Served . . . . .

Cost . . . . .



## THE VICTORY GARDEN GUIDE

### CELERY

- Planting Date** . . . . . EARLY: Start inside, March 15th.  
LATE: Sow outside in a good bed; transplant from there into the field then follow same routine as early.
- How To Plant** . . . . . When 2" high set outside, 8" apart in the row, 48" between rows.
- Proper Care** . . . . . Hill with dirt as the plants grow but never cover the heart. Use a good commercial fertilizer or barnyard manure that is well rotted. Muck soil is best.
- Insects, Control** . . . . Seldom bothered.

#### Data:

Date Planted . . . . .  
Amount Canned . . . . .  
Meals Served . . . . .  
Cost . . . . .

### CHINESE CABBAGE

- Planting Date** . . . . . July 15th to August 15th, where summers are hot. One or two weeks before average date of last frost where summers are cool.
- How To Plant** . . . . . Sow 1/4" to 1/2" deep; 30" between rows.
- Proper Care** . . . . . Thin plants to stand 12" apart.
- Insects, Control** . . . . . APHIS: Use Rotenone or Talc, 15 lbs. to 5 lbs. Nicotine Sulphate.  
Nicotine dust or spray, 1 lb. Nicotine to 5 gallons water.

#### Data:

Date Planted . . . . .  
Amount Canned . . . . .  
Meals Served . . . . .  
Cost . . . . .

# THE VICTORY GARDEN GUIDE

## COLLARDS

**Planting Date** . . . . . April 1st to 15th.

**How To Plant** . . . . . Sow  $\frac{1}{4}$ " to  $\frac{1}{2}$ " deep; 28" to 30" between rows.

**Proper Care** . . . . . Thin to stand about 12" apart in the row.  
Use good fertilizer along the sides of the row.

**Insects, Control** . . . . Same as Cabbage.

### Data:

Date Planted . . . . .

Amount Canned . . . . .

Meals Served . . . . .

Cost . . . . .

## CUCUMBER

**Planting Date** . . . . . Start inside, April 1st to 15th.  
If not started inside, sow May 12th to June 1st.

**How To Plant** . . . . . Set out plants started inside after danger of frost is over. Set 60" to 72" apart.  
If sown outside, sow about 6 seeds to the hill, hills 60" to 72" apart.

**Proper Care** . . . . . Use some good fertilizer or manure in the hill.  
Keep hoed.

**Insects, Control** . . . . STRIPED CUCUMBER BEETLE: Rotenone.  
APHIS: Nicotine dust or spray.

### Data:

Date Planted . . . . .

Amount Canned . . . . .

Meals Served . . . . .

Cost . . . . .

# THE VICTORY GARDEN GUIDE

## DILL

- Planting Date** . . . . . April 15th to May 15th.
- How To Plant** . . . . . Sow  $\frac{1}{4}$ " to  $\frac{1}{2}$ " deep; 14" to 20" between rows.  
Can broadcast if you want.
- Proper Care** . . . . . Doesn't need much looking after.
- Insects, Control** . . . . . Seldom bothered.

### Data:

- Date Planted . . . . .
- Amount Canned . . . . .
- Meals Served . . . . .
- Cost . . . . .

## EGG PLANT

- Planting Date** . . . . . Start inside, April 15th.
- How To Plant** . . . . . Sow in drills  $\frac{1}{4}$ " to  $\frac{1}{2}$ " deep; when 3" high peg out to stand 4" apart in boxes. Set outside June 1st, or when ground is warm.
- Proper Care** . . . . . Keep some good fertilizer around the plant.
- Insects, Control** . . . . . COLORADO POTATO BEETLE: Use Arsenate of Lead or Paris Green, 2 oz. to 4 gals. of water.  
FLEA BEETLE: Dust with Arsenate of Lead.

### Data:

- Date Planted . . . . .
- Amount Canned . . . . .
- Meals Served . . . . .
- Cost . . . . .

# THE VICTORY GARDEN GUIDE

## ENDIVE

**Planting Date** . . . . . April 1st to June 1st.

**How To Plant** . . . . . Sow 1/4" to 1/2" deep; 14" to 28" between rows.

**Proper Care** . . . . . Thin to stand 8" to 10" apart in the row, Fertilize along the sides of the row and where water is handy keep well sprayed.  
To Bleach: Cover with boards or papers and sacks.

**Insects, Control** . . . . . Seldom bothered.

### Data:

Date Planted . . . . .

Amount Canned . . . . .

Meals Served . . . . .

Cost . . . . .

## KALE

**Planting Date** . . . . . July 15th to August 15th.

**How To Plant** . . . . . Sow 1/4" to 1/2" deep; 28" to 30" between rows.

**Proper Care** . . . . . Thin to stand about 12" apart in the row.  
Keep well cultivated.

**Insects, Control** . . . . . CABBAGE WORM: Use Rotenone Talc 15 lbs. to 5 lbs. Nicotine Sulphate.  
APHIS: Use Nicotine dust or spray.

### Data:

Date Planted . . . . .

Amount Canned . . . . .

Meals Served . . . . .

Cost . . . . .



# THE VICTORY GARDEN GUIDE

## KOHLRABI

**Planting Date** . . . . . April 1st to 15th.

**How To Plant** . . . . . Sow  $\frac{1}{4}$ " to  $\frac{1}{2}$ " deep; 28" to 30" between rows.

**Proper Care** . . . . . When about 4" high thin out to stand from 8" to 10" apart in the row.

**Insects, Control** . . . . Same as Cabbage.

### Data:

Date Planted . . . . .

Amount Canned . . . . .

Meals Served . . . . .

Cost . . . . .

## LEEK

**Planting Date** . . . . . April 1st to 15th.

**How To Plant** . . . . . Drill in rows  $\frac{1}{4}$ " to  $\frac{1}{2}$ " deep; 14" to 28" between rows. Don't sow too thick.

**Proper Care** . . . . . Fertilize sides of row. Leave in ground through winter, cover with straw and manure.

**Insects, Control** . . . . ONION THRIP: Use Nicotine Sulphate with Fish Oil Soap.  $\frac{1}{4}$  lb. Nicotine Sulphate,  $\frac{1}{2}$  bar Fish Oil Soap to 5 gallons water. Mix Nicotine first, add Soap after well dissolved.

### Data:

Date Planted . . . . .

Amount Canned . . . . .

Meals Served . . . . .

Cost . . . . .

# THE VICTORY GARDEN GUIDE

## LETTUCE

**Planting Date** . . . . . No. 1—Heading: March 1st to 31st, Spring planting. September 1st to 15th, Fall planting.  
No. 2—Leaf: March 15th to April 30th, Spring planting. September 1st to 15th, Fall planting.

**How To Plant** . . . . . Sow both kind  $\frac{1}{4}$ " to  $\frac{1}{2}$ " deep; 14" to 27" between rows.

**Proper Care** . . . . . No. 1—Thin out to about 8" between heads.  
No. 2—Do not pull when gathering, cut above heart and it will continue to throw a new leaf.

**Insects, Control** . . . . . No. 1—CUT WORM: Use poison bait on ground.  
No. 2—APHIS: Use Nicotine dust or spray.

### Data:

Date Planted . . . . .

Amount Canned . . . . .

Meals Served . . . . .

Cost . . . . .

## MELONS

**Planting Date** . . . . . May 1st to May 15th.

**How To Plant** . . . . . Plant  $\frac{3}{4}$ " to  $1\frac{1}{2}$ " deep in hills 6 to 8 feet apart, about 8 seeds to the hill.

**Proper Care** . . . . . After they are started, thin to 4 or 6 plants.

**Insects, Control** . . . . . SQUASH BUG or CUCUMBER BEETLE: Hand pick or use Rotenone dust or Nicotine.

### Data:

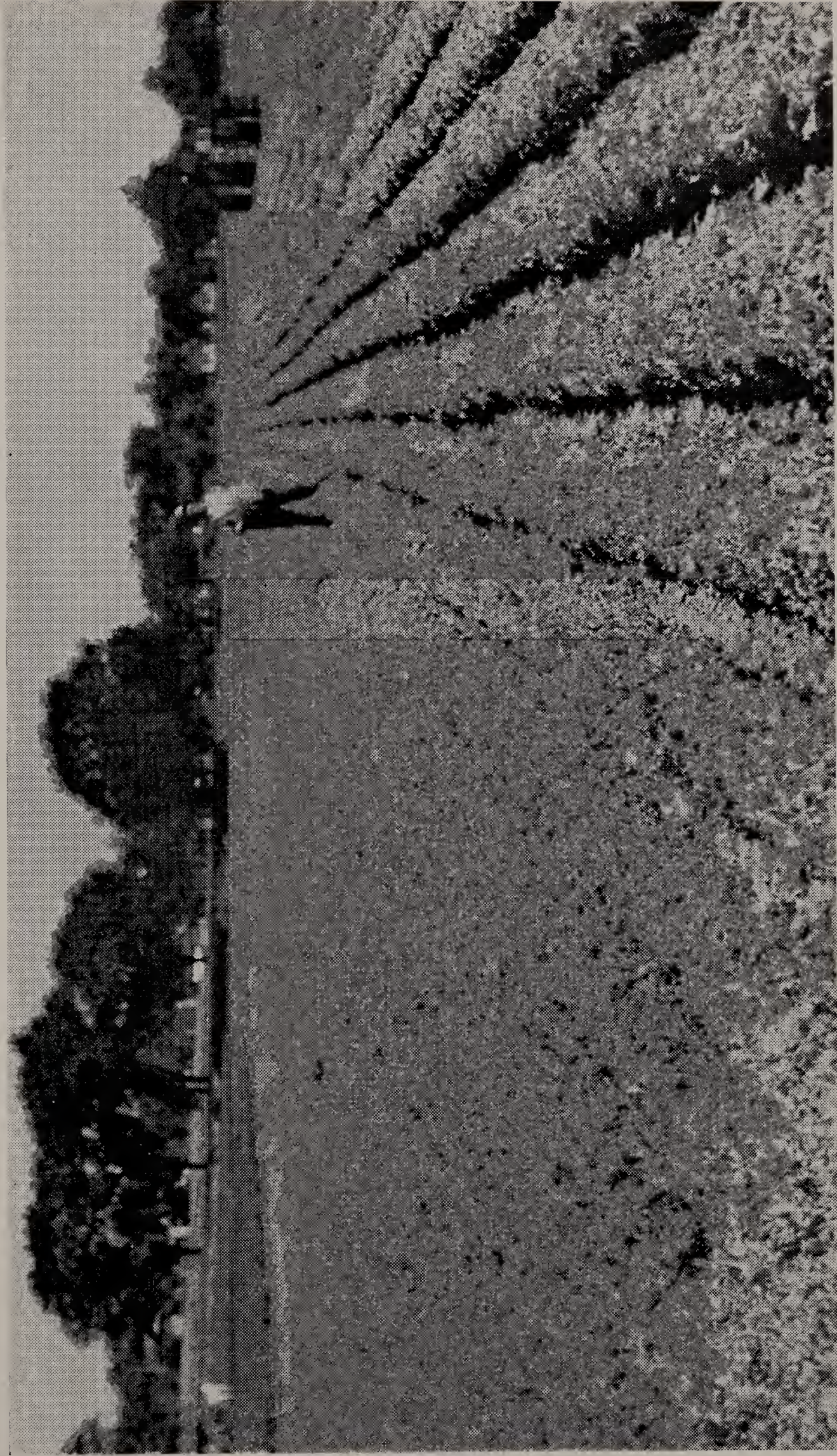
Date Planted . . . . .

Amount Canned . . . . .

Meals Served . . . . .

Cost . . . . .





LETTUCE PLANTED APRIL 18, 1935 — PICTURE JUNE 24, 1935



# THE VICTORY GARDEN GUIDE

## MUSTARD

**Planting Date** . . . . . Spring planting as soon as Frost is out of ground.  
Fall planting, August 1st to September 1st.

**How To Plant** . . . . . Sow 1/4" to 1/2" deep; 14" to 28" between rows.

**Proper Care** . . . . . Thin to stand 2" to 4" apart in the row.

**Insects, Control** . . . . . Usually not bothered.

### Data:

Date Planted . . . . .

Amount Canned . . . . .

Meals Served . . . . .

Cost . . . . .

## OKRA

**Planting Date** . . . . . April 1st to May 1st. Can follow Radish.

**How To Plant** . . . . . Sow 1/2" to 1" deep; 14" to 28" between rows.

**Proper Care** . . . . . Thin to stand 4" to 8" apart in the row.  
Easy to raise and good in soups.

**Insects, Control** . . . . . Seldom bothered.

### Data:

Date Planted . . . . .

Amount Canned . . . . .

Meals Served . . . . .

Cost . . . . .



# THE VICTORY GARDEN GUIDE

## ONIONS

- Planting Date** . . . . . No. 1—BLACK SEED: As early in the Spring as the soil can be worked.  
No. 2—WHITE, YELLOW or RED SETS: April 1st to 15th.  
No. 3—EGYPTIAN MULTIPLIERS: August 1st to September 1st for Fall or early Spring use.
- How To Plant** . . . . . No. 1—Sow  $\frac{1}{4}$ " to  $\frac{1}{2}$ " deep; 12" to 14" between rows.  
No. 2—Sow 1" deep; 2" to 3" apart in the row; 14" to 27" between rows.  
No. 3—Sow 1" deep; 18" to 28" between rows.
- Proper Care** . . . . . No. 1—Should be thinned at second weeding to stand about 4" apart.  
No. 2—Keep well cultivated and weeded.  
No. 3—Leave standing through the Winter as they are perennial and very hardy.
- Insects, Control** . . . . . No. 1—ONION THRIP: Use Nicotine Sulphate and Soap Solution.  
(Others not usually bothered).

### Data:

- Date Planted . . . . .  
Amount Canned . . . . .  
Meals Served . . . . .  
Cost . . . . .

## PEAS

- Planting Date** . . . . . April 1st to 15th.
- How To Plant** . . . . . Sow  $1\frac{1}{2}$ " to 2" deep; 18" to 28" between rows.
- Proper Care** . . . . . Pick when pods are plump and of fresh green color.
- Insects, Control** . . . . . APHIS: Use Rotenone, Nicotine dust, Pyrethrum.  $\frac{1}{4}$  lb. to 4 gallons water.

### Data:

- Date Planted . . . . .  
Amount Canned . . . . .  
Meals Served . . . . .  
Cost . . . . .

# THE VICTORY GARDEN GUIDE

## PARSNIPS

**Planting Date** . . . . . April 1st to April 15th.

**How To Plant** . . . . . Sow 1/4" to 1/2" deep; 28" to 30" between rows.

**Proper Care** . . . . . Let stand in ground and dig in Spring for the best.

**Insects, Control** . . . . . Seldom bothered.

### Data:

Date Planted . . . . .

Amount Canned . . . . .

Meals Served . . . . .

Cost . . . . .

## PARSLEY

**Planting Date** . . . . . As soon as frost is out of ground.  
In Fall for early Spring use.

**How To Plant** . . . . . Sow 1/4" to 1/2" deep; 14" to 28" between rows.

**Proper Care** . . . . . Thin to stand from 6" to 8" apart in the row.  
Cover Fall planting.

**Insects, Control** . . . . . Seldom bothered.

### Data:

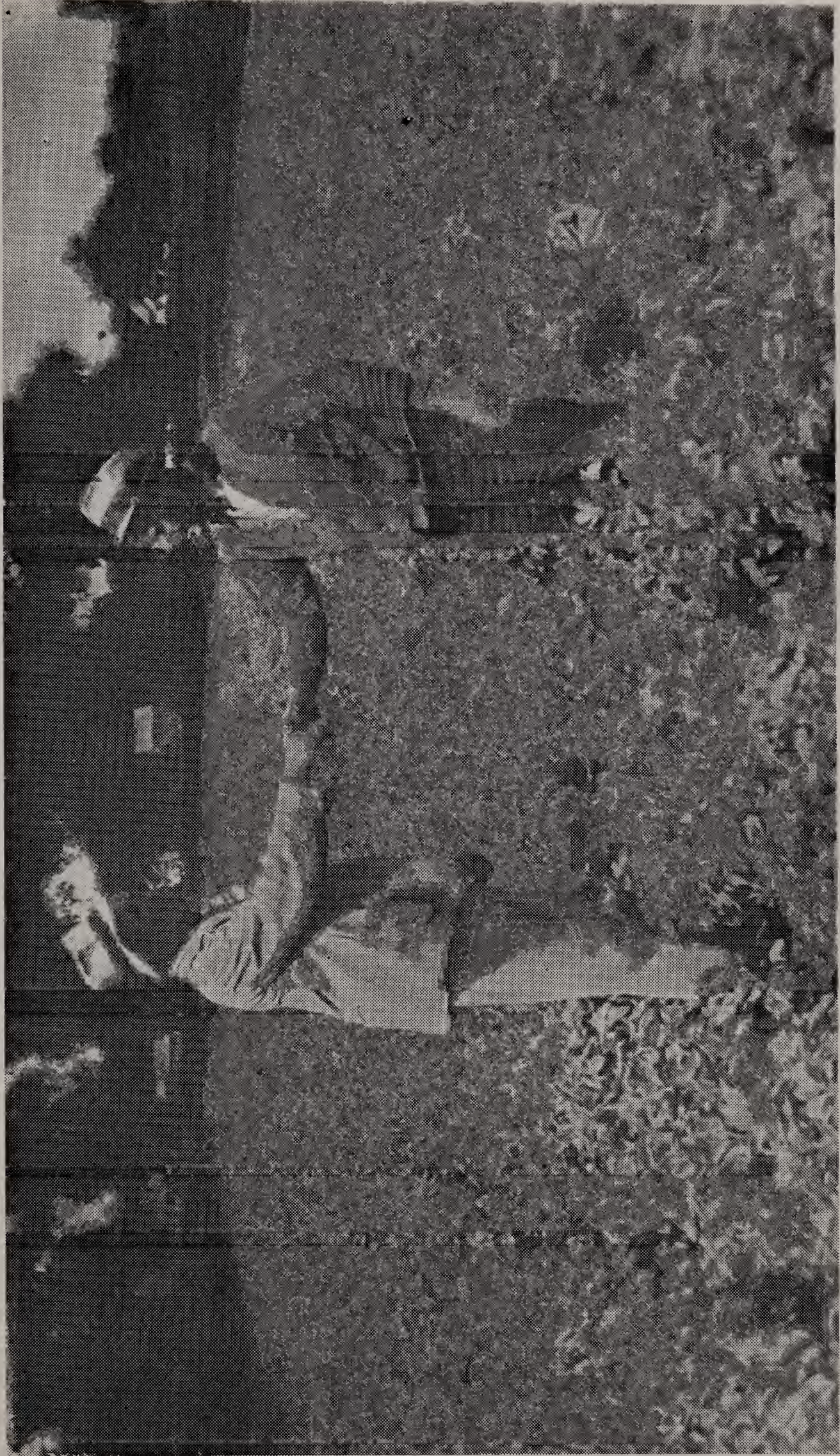
Date Planted . . . . .

Amount Canned . . . . .

Meals Served . . . . .

Cost . . . . .





**PARSNIPS**



# THE VICTORY GARDEN GUIDE

## PEPPERS

- Planting Date** . . . . . Start inside, April 1st to 15th.
- How To Plant** . . . . . When 3" high peg out in flats about 4" apart, when 5" high transfer to cooling frame and gradually release the heat. Set out June 1st to 15th. Set plants 3 feet apart.
- Proper Care** . . . . . Use good fertilizer around the plants, keep well weeded.
- Insects, Control** . . . . . CUT WORMS: The fertilizer will help but if they are too bad put a paper band around the plant about 4" high. APHIS: Use Nicotine dust or spray.

### Data:

- Date Planted . . . . .
- Amount Canned . . . . .
- Meals Served . . . . .
- Cost . . . . .

## PUMPKIN

- Planting Date** . . . . . April 1st to May 15th.
- How To Plant** . . . . . Plant 1" to 2" deep; 6 feet between hills, 4 to 6 seeds in a hill.
- Proper Care** . . . . . Use good fertilizer in the hill.
- Insects, Control** . . . . . Same as Cucumber.

### Data:

- Date Planted . . . . .
- Amount Canned . . . . .
- Meals Served . . . . .
- Cost . . . . .



# THE VICTORY GARDEN GUIDE

## RADISH

- Planting Date** . . . . .EARLY: April 1st to 15th.  
LATE: August 1st to September 1st.
- How To Plant** . . . . .Sow 1/2" to 1" deep; 14" to 27" between rows.  
Can be broadcast.
- Proper Care** . . . . .Keep well weeded.
- Insects, Control** . . . . .Never bothered.

### Data:

- Date Planted . . . . .
- Amount Canned . . . . .
- Meals Served . . . . .
- Cost . . . . .

## RHUBARB

- Planting Date** . . . . .April 1st to August 15th.
- How To Plant** . . . . .Take Roots from an old bed with a spade and trans-  
plant 8" deep in rows 3 to 4 feet apart.
- Proper Care** . . . . .Cover in Winter with good rotted manure or leaves.
- Insects, Control** . . . . .Seldom bothered.

### Data:

- Date Planted . . . . .
- Amount Canned . . . . .
- Meals Served . . . . .
- Cost . . . . .

# THE VICTORY GARDEN GUIDE

## RUTABAGA

**Planting Date** . . . . . July 1st to August 1st.

**How To Plant** . . . . . Sow 1/2" to 1" deep; 20" to 28" between rows.

**Proper Care** . . . . . When about 4" high, thin to stand about 8" apart in the row.

**Insects, Control** . . . . . Seldom bothered.

### Data:

Date Planted . . . . .

Amount Canned . . . . .

Meals Served . . . . .

Cost . . . . .

## SALSIFY

**Planting Date** . . . . . July 1st to July 15th.

**How To Plant** . . . . . Sow 1/2" to 1" deep; 18" to 28" between rows.  
Plant thin.

**Proper Care** . . . . . Let remain in ground all Winter and dig in the Spring, have the flavor of Oysters.

**Insects, Control** . . . . . Seldom bothered.

### Data:

Date Planted . . . . .

Amount Canned . . . . .

Meals Served . . . . .

Cost . . . . .

## THE VICTORY GARDEN GUIDE

### SPINACH

**Planting Date** . . . . . March 15th to August 15th. Can follow any Spring planting with second crop and have success.

**How To Plant** . . . . . Sow in drills 1/2" to 1" deep; 14" to 27" between rows.

**Proper Care** . . . . . Do not pull, cut above heart and it will produce a second crop or pick the large leaves and leave the inner leaf to grow. Keep well cleaned. Sand will grow the best Spinach.

**Insects, Control** . . . . . APHIS: Use Nicotine dust or spray.

#### **Data:**

Date Planted . . . . .

Amount Canned . . . . .

Meals Served . . . . .

Cost . . . . .

### SQUASH

**Planting Date** . . . . . April 15th to April 30th.

**How To Plant** . . . . . Plant 1" to 1 1/2" deep; 6 to 8 feet between hills; 4 to 6 seeds in a hill.

**Proper Care** . . . . . Use some good rotten manure or fertilizer in the hill.

**Insects, Control** . . . . . Same as Pumpkin.

#### **Data:**

Date Planted . . . . .

Amount Canned . . . . .

Meals Served . . . . .

Cost . . . . .



# THE VICTORY GARDEN GUIDE

## SWEET CORN

- Planting Date** . . . . . Start planting around April 18th.  
Late corn can be planted until July 15th.
- How To Plant** . . . . . Plant 1½" to 2" deep; Hills 36" apart; 6 seeds in a hill.
- Proper Care** . . . . . When corn is about 3 feet high or until it tassels out, cut or pull off all the suckers and then fertilize around the hill.
- Insects, Control** . . . . . CORN BORER: Apply Rotenone dust just before ear forms and then apply it four more times at five day intervals.  
EAR WORM: Snip off tip of ear after silk dries or apply mineral oil.

### Data:

- Date Planted . . . . .
- Amount Canned . . . . .
- Meals Served . . . . .
- Cost . . . . .

## SWEET POTATOES

- Planting Date** . . . . . Start inside, April 1st to 15th.
- How To Plant** . . . . . When about 8" high cut off branches and plant outside. Plant in rows 3½ to 4 feet apart.
- Proper Care** . . . . . Keep the plants covered up as they grow just leaving the tips out.
- Insects, Control** . . . . . Seldom bothered.

### Data:

- Date Planted . . . . .
- Amount Planted . . . . .
- Meals Served . . . . .
- Cost . . . . .

# THE VICTORY GARDEN GUIDE

## SWISS CHARD

- Planting Date** . . . . . March 15th to August 15th.
- How To Plant** . . . . . Sow 1/2" to 1" deep; 14" to 27" between rows.
- Proper Care** . . . . . Keep well cultivated but don't get too close to the plant and injure it. Do not pull, cut above the heart and it will continue to produce all season.
- Insects, Control** . . . . . BLISTER BEETLE: If bothered, cut crop above heart and it will re-produce in a short time.

### Data:

- Date Planted . . . . .
- Amount Canned . . . . .
- Meals Served . . . . .
- Cost . . . . .

## TOMATO

- Planting Date** . . . . . Start plants inside about April 1st and keep inside until May 15th. Can plant seed outside from May 1st to May 10th.
- How To Plant** . . . . . Sow 1/4" to 1/2" deep. Set plants out about 36" apart in the row, 36" to 48" between rows.
- Proper Care** . . . . . When plant is about 12" high put a good fertilizer around it but not too close, about 2" to 4" away.
- Insects, Control** . . . . . CUT WORM: Put a paper collar around each plant when set out. APHIS: Nicotine dust or spray. GREEN TOMATO WORM: Rotenone dust or hand pick.

### Data:

- Date Planted . . . . .
- Amount Canned . . . . .
- Meals Served . . . . .
- Cost . . . . .

# THE VICTORY GARDEN GUIDE

## TURNIPS

**Planting Date** . . . . .EARLY: April 1st to June 1st.  
LATE: July 15th to August 15th.

**How To Plant** . . . . .Sow 1/2" to 1" deep; 14" to 27" between rows.

**Proper Care** . . . . .Keep well weeded and cultivated, thin to stand 4" apart in the row. If you want them for greens, pull when very young. For roots they are best when about 4" in size.

**Insects, Control** . . . . .APHIS: Use Nicotine dust or spray.

### Data:

Date Planted . . . . .  
Amount Canned . . . . .  
Meals Served . . . . .  
Cost . . . . .

















NATIONAL AGRICULTURAL LIBRARY



1022219412