

STUDENT 360

PH02: RPL

(YOU)^{US}



MACQUARIE
University
SYDNEY · AUSTRALIA

Project context

RECOGNITION OF PRIOR LEARNING

The RPL experience on the MQ website

explains what RPL is and its benefits. The website however has two calculators that are the credit transfer and the articulations register. From a user perspective this is a disparate experience and not easy to use.

The project goal was to combine the data from the two calculators and create a form that would allow the student user to input any prior learning, and their intended future course at Macquarie. While returning a summary result that gave the student an estimate of credit.

This tool is designed to be a sales aid or lead gen tool on the website, to drive users to apply either as a new student or existing student who is enrolled and wishing for credit on an existing course.

The business goals of MQ is to deliver a credit experience that will entice students to stay within the MQ student life cycle as UG to PG.

The RPL process is aiming to offer block and specified credit options, that can be generously given depending on the sector and the student profile in question, among other factors.

RPL is one overarching process or business flow while the estimate calculator is the **point of difference** to drive students to this process.

*The assessment side and strategy is still being created, this presentation demonstrates the **Explore** experience of the student and the start of the **Apply** experience before the 'assessment phase.'*



RPL Explore

UX DISCOVERY PHASE

1

ENGAGEMENT

What is it the Stakeholders and SME's want, desire or believe is the best RPL experience for Explore?

2

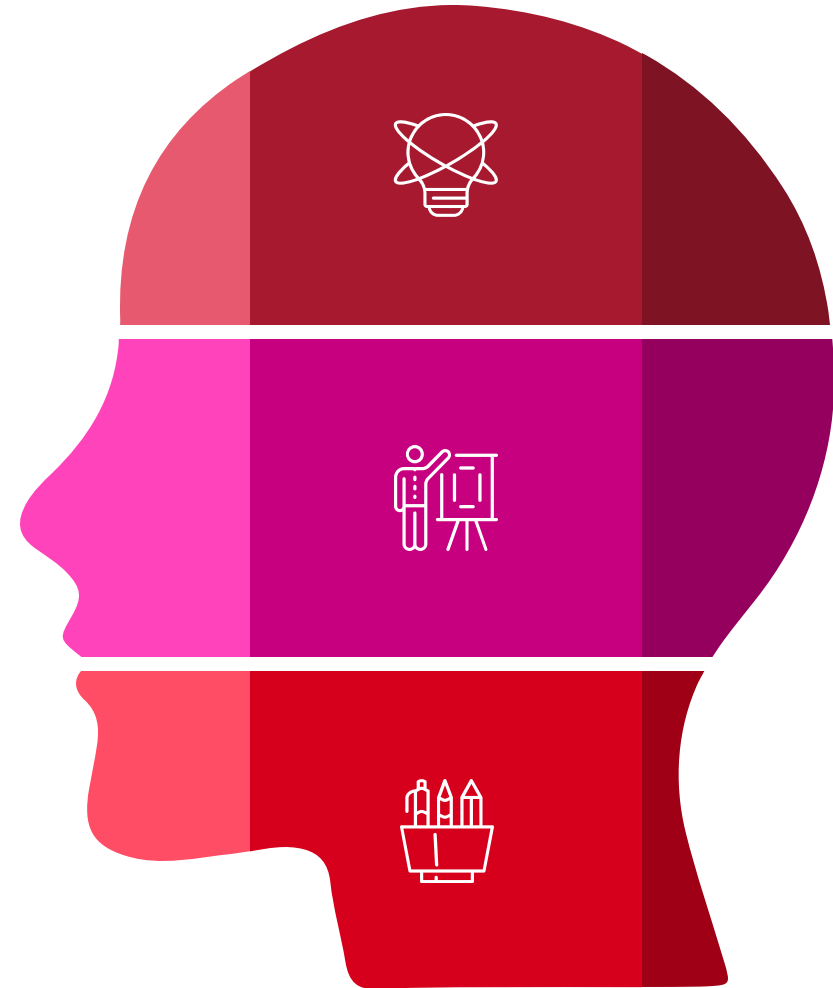
IDEAS

Who is doing this well? Do we want to do the same solution?

3

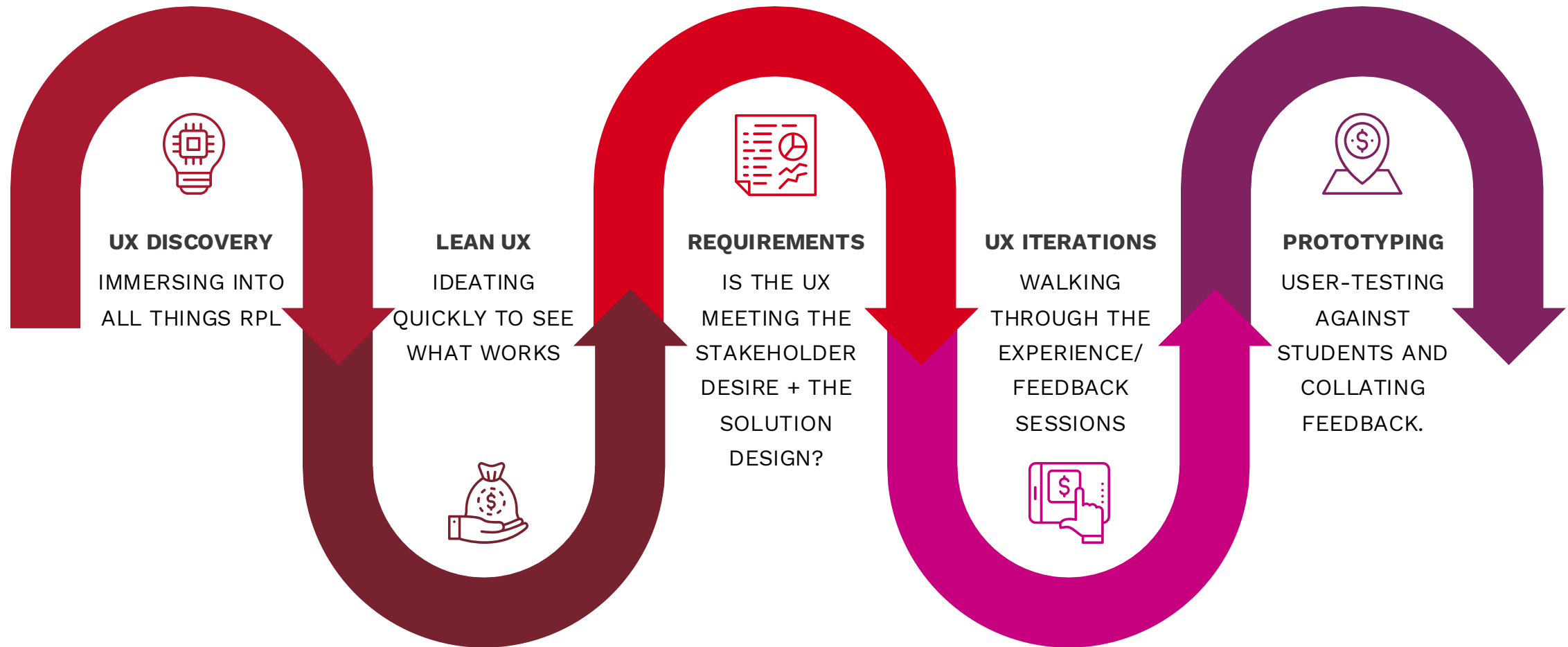
PROPOSED SOLUTION

What is the point of difference for Macquarie University for RPL Explore?



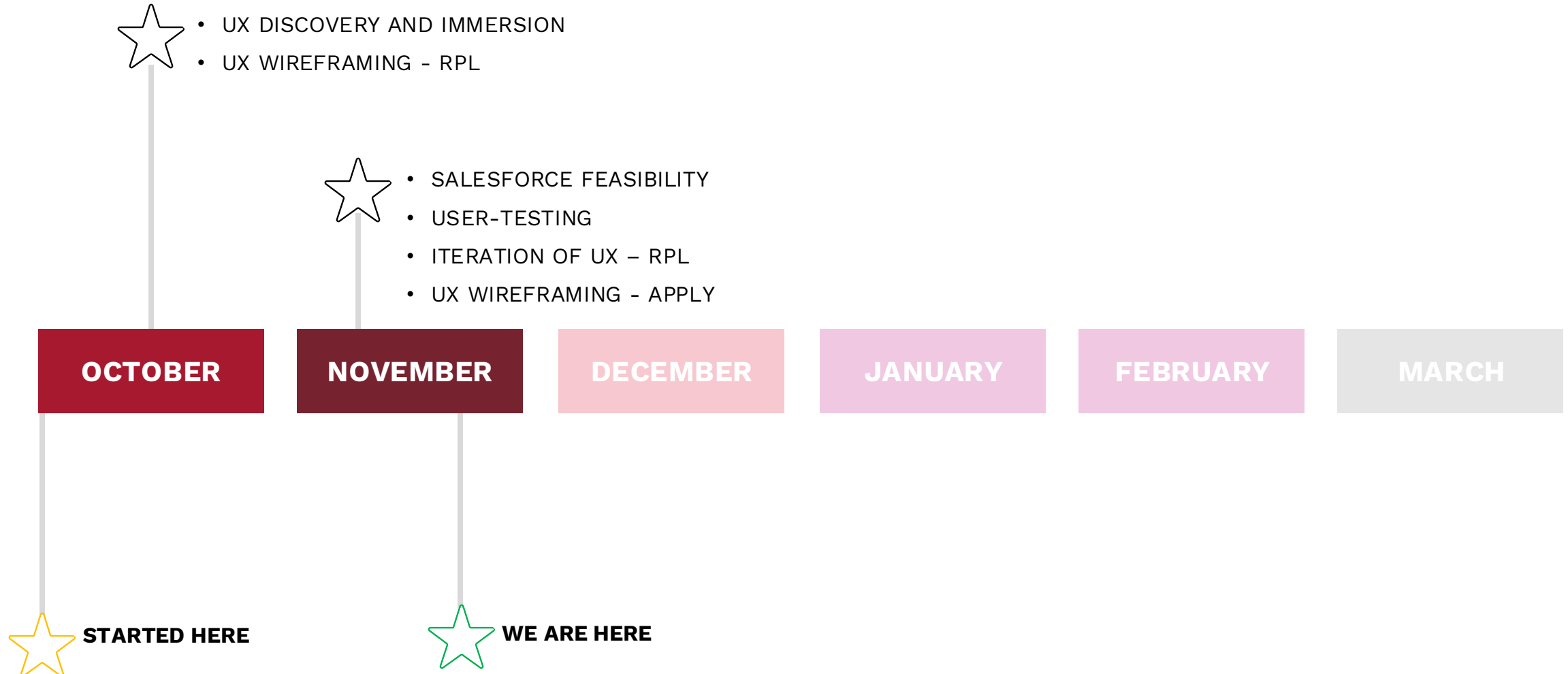
User experience design

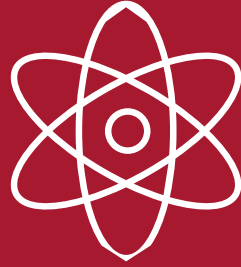
UX PHASES



Milestones RPL Explore/Apply

USER EXPERIENCE DESIGN





UX

JOURNEYS + WIREFRAMES



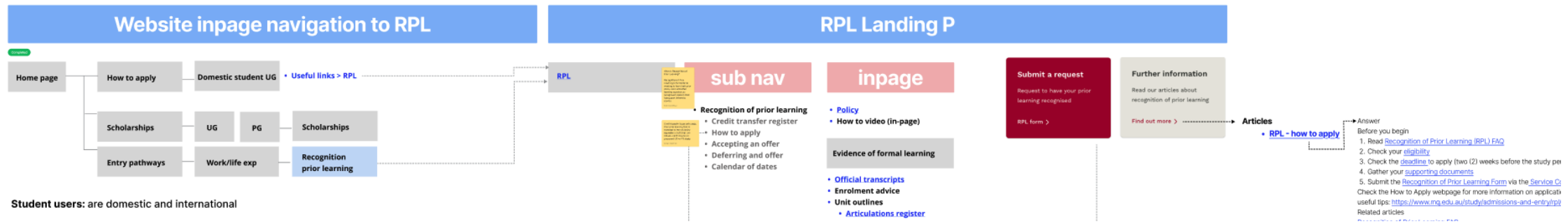
RPL Explore/Apply

USER JOURNEYS

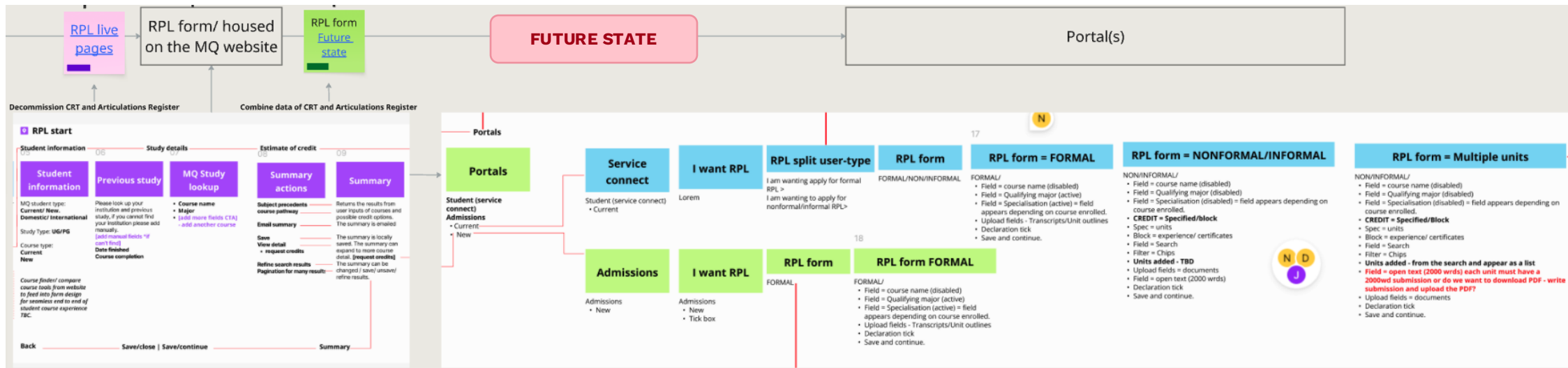


Current state website course finder > RPL pages [explore]

FRONT OF HOUSE



Student users: are domestic and international



RPL UX inspiration

Credit tool used by:

- Bond
- Vic Uni
- Deakin

The screenshot shows the top navigation bar of the credit tool. It includes a 'Help' icon, a 'Saved' icon with a '1' notification, and a prominent yellow 'APPLY FOR CREDIT' button. Below the navigation bar is the Bond University logo and another set of navigation icons. A dark blue search bar contains the text 'Australian Catholic University Limited' and a search prompt 'Try "Diploma of Business" or "BIO100"'. Below the search bar are two tabs: 'PATHWAY PROGRAMS (0)' and 'SUBJECT PRECEDENTS (4)'. The 'SUBJECT PRECEDENTS' tab is active.

Based on your prior study, you may be eligible for the below precedents which have been established on past credit assessments conducted by Bond University.

BIOL125 Human Biology 1 Australian Catholic University Limited	→	BMED11-109 Principles of Human Structure and Function Bond University Available in 8 programs	10 Credit points	♡
CREDIT DETAILS				



[STUDY](#) [CONTACT US](#) [SEARCH](#) [MENU](#)

If you are applying to study at Bond and would like to receive credit for prior learning, you can follow the process below to apply for credit as part of your application.

Applying for credit in three steps:

1. Submit your application to study at Bond University through our online application system.
2. If you intend to apply for credit, ensure that you complete the section titled 'Advanced Standing and Credit Transfer' on the online application form. Remember to submit all relevant documentation to support assessment of your credit application.
3. As part of the admission process, your application will be reviewed for any eligible transfer of credit into your chosen Bond course.

[START YOUR APPLICATION](#)

Important information

- Eligibility for credit
- When to apply for credit
- Important documentation to include
- Support with your application

UX function per University comparison

UX REQUIREMENTS – RPL



UX comparison of credit tool Bond Uni/Vic Uni/Deakin Uni vs MQ future state

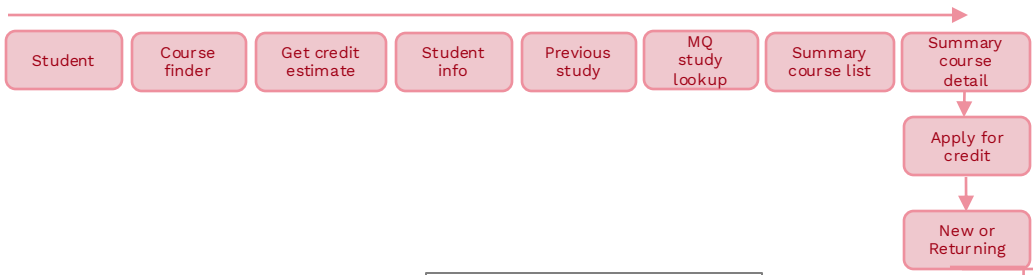
	Bond /Vic/ Deakin uni version	Macquarie University version
Lookup courses from prior study		
Save courses locally		
Get a credit estimate from the university based on prior learning		
Next best action to apply		
Parsing data from local save to student portals	Unknown	
Capture profiling upfront for traffic split: Student type- New/ Current Dom/Int Course type- New/Current		
Capture email address upfront		
Ability to re-engage users who bounce	Unknown	
Ability to lookup future course via the user input		
Ability to add multiple prior learning fields		
Ability to add multiple future learning fields		

Explore RPL > Apply RPL

NEW/CURRENT STUDENT



MACQUARIE University SYDNEY · AUSTRALIA



EXPLORE RPL

60% CUSTOM

CUSTOM – preferred by students tested



Build your credit estimate for recognition of prior study

Macquarie University has formal credit transfer, articulation and dual degree arrangements with various local and international education providers. These formal arrangements can help fast-track your studies by providing you with credit towards your Macquarie course. Students with prior learning from a range of accredited tertiary institutions may apply to have credit transferred to their Macquarie University program, which may fast-track their studies.

Please fill in the form and review the summary to see an estimate of credit that could be applied to your next course at Macquarie University.

Please add your prior learning information

This section is the study you have graduated or partially completed that is either at an international institution or domestic.

This is usability = To be defined

Macquarie Student type Study type

Please choose

Domestic International

Saved (1)

Previous Study

Please look up your international institution and previous study, if you cannot find your institution please add manually.

Country Institution

Course name Major

+ If you can't see your institution add manually

Date finished Course completion

Please click save to keep your inputs for application purposes.

Macquarie University Study

Please look up the course you would like to study at Macquarie University

Course name Major

Please click save to keep your inputs for application purposes.

Credit estimate for prior learning and experience

During the application process for prior learning Macquarie University assessment team will factor into the process work experience, any non-formal learning along with tertiary education.

The units below are an estimate of credit points for an accurate recognition of prior learning credit please make sure to add RPL to your submission. Or apply for credit now and add to a new admission or existing course.

Subject Precedents (4)

Course Pathway

Subject Precedents

MGMT1002 - Managing for Impact → **MMBA8035 - Finance for Business leaders** 10 CREDITS
Macquarie University Bachelor of Commerce 2025 Session 2, North Ryde

ACST10010 - Finance Fundamentals
Macquarie University Bachelor of Commerce

MMBA8035 - Finance for Business leaders
2025 Session 2, North Ryde

START DATE	DURATION	STUDY MODE	FEE
Term 2	Full-time, XX	In-person, on campus	Domestic Award PG Fee Paying

Unit Description
Unlock the essential principles of financial management through the lens of a firm's finance manager. This unit offers comprehensive insights into investment, financing, and dividend decisions, empowering you to navigate complex financial landscapes confidently. We will use finance theory to construct a robust framework for informed decision-making, supported by practical case studies and financial planning models that provide real-world context. Explore a range of methodologies for evaluating investment projects, assessing risk across competing initiatives, and conducting valuation and capital structure analyses. By mastering these strategic tools and techniques, you'll be equipped to drive sustainable growth and optimise performance in any organisational setting.

Learning Outcomes
On successful completion of this unit, you will be able to:

- ULO1: Apply finance theory, frameworks and methods to form evidence-based and strategic investment solutions for a range of problems.
- ULO2: Evaluate and communicate the implications of a firm's finance and investment decisions/strategies for stakeholders both as an individual and a group.
- ULO3: Analyse and employ models of business finance performance to measure and track the firm's value creation across the firm's operations both as an individual and a group.

MKTG1001 - Marketing and Value Creation → **MMBA8020 - Marketing and Management** 10 CREDITS
Macquarie University Bachelor of Commerce Macquarie University

MQBS2010 - Enhancing Employability Skills
Macquarie University Bachelor of Commerce

ECON1020 - Economics and Business Strategy → **MMBA8040 - Accounting for Business Leaders: Enhancing Decision Making** 10 CREDITS
Macquarie University Bachelor of Commerce Macquarie University

STAT1250 - Business Statistics and Insights
Macquarie University Bachelor of Commerce

Email me my credit estimate summary

Email address

I consent...

EXPLORE RPL

10% Custom

Not preferred by students tested



Build your credit estimate for recognition of prior study

Macquarie University has formal credit transfer, articulation and dual degree arrangements with various local and international education providers. These formal arrangements can help fast-track your studies by providing you with credit towards your Macquarie course. Students with prior learning from a range of accredited tertiary institutions may apply to have credit transferred to their Macquarie University program, which may fast-track their studies.

Please fill in the form and review the summary to see an estimate of credit that could be applied to your next course at Macquarie University.

Please add your prior learning information

This section is the study you have graduated or partially completed that is either at an international institution or domestic.

This is usability = To be defined ⓘ

Macquarie Student type Study type

Please choose

Domestic International

Saved (1) [Modify](#)

Previous Study

Please look up your international institution and previous study, if you cannot find your institution please add manually.

Country	Institution
<input type="text" value="India"/>	<input type="text" value="IIT Madras"/>
Course name	Major
<input type="text" value="Bachelors of Technology"/>	<input type="text" value="Machine Learning"/>
Date finished	Course completion
<input type="text" value="2025/18/10"/>	<input type="text" value="Partial"/>

Please click save to keep your inputs for application purposes.

[Remove](#) [Save](#) [Add another course](#)

Macquarie University Study

Please look up the course you would like to study at Macquarie University

Course name	Major
<input type="text" value="Bachelors of Computer Science"/>	<input type="text" value="Cyber Security"/>

Please click save to keep your inputs for application purposes.

[Remove](#) [Save](#) [Add another course](#)

Credit estimate for prior learning and experience

During the application process for prior learning Macquarie University assessment team will factor into the process work experience, any non-formal learning along with tertiary education.

The units below are an estimate of credit points for an accurate recognition of prior learning credit please make sure to add RPL to your submission. Or apply for credit now and add to a new admission or existing course.

Email me my credit estimate summary

Email address

I consent...
[Send](#)

Header

Lorem ipsum dolor sit amet, consectetur adipiscing elit, sed do eiusmod tempor incididunt ut labore et dolore magna aliqua. Ut enim ad minim veniam, quis nostrud exercitation ullamco laboris nisi ut aliquip ex ea commodo consequat.

ⓘ Please view the course finder to see what is available at Macquarie University - lorem ipsum dolor amit...

Subject Precedents

[Apply for credit](#)

MGMT1002 - Managing for Impact

Macquarie University
Bachelor of Commerce

MMBA8035 - Finance for Business leaders

10 CREDITS

ACST10010 - Finance Fundamentals → 2025 Session 2, North Ryde
Macquarie University
Bachelor of Commerce

MMBA8035 - Finance for Business leaders

2025 Session 2, North Ryde

START DATE	DURATION	STUDY MODE	FEE
Term 2	Full-time, XX	In-person, on campus	Domestic Award PG Fee Paying

Unit Description

Unlock the essential principles of financial management through the lens of a firm's finance manager. This unit offers comprehensive insights into investment, financing, and dividend decisions, empowering you to navigate complex financial landscapes confidently. We will use finance theory to construct a robust framework for informed decision-making, supported by practical case studies and financial planning models that provide real-world context. Explore a range of methodologies for evaluating investment projects, assessing risk across competing initiatives, and conducting valuation and capital structure analyses. By mastering these strategic tools and techniques, you'll be equipped to drive sustainable growth and optimise performance in any organisational setting.

Learning Outcomes

On successful completion of this unit, you will be able to:

- ULO1: Apply finance theory, frameworks and methods to form evidence-based and strategic investment solutions for a range of problems.
- ULO2: Evaluate and communicate the implications of a firm's finance and investment decisions/strategies for stakeholders both as an individual and a group.
- ULO3: Analyse and employ models of business finance performance to measure and track the firm's value creation across the firm's operations both as an individual and a group.

MMBA8020- Marketing and Management

Macquarie University
Bachelor of Commerce

MKTG1001 - Marketing and Value Creation

Macquarie University

10 CREDITS

MQBS2010 - Enhancing Employability Skills

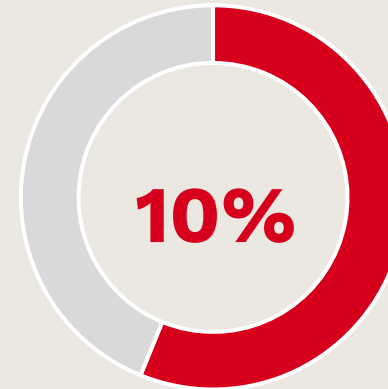
USER-TESTING – TWO SUMMARY PAGE VERSIONS



CUSTOM - FLOW 01
PROTOTYPE 1



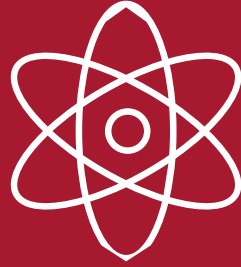
[VIEW FLOW 01 >](#)



CUSTOM - FLOW 02
PROTOTYPE 2



[VIEW FLOW 02 >](#)



UX

USER-TESTING FINDINGS



Usability tests

INTRODUCTION

We checked comprehension, efficiency and desirability of RPL credit estimates and applications.

	Participant 1	Participant 2	Participant 3	Participant 4	Participant 5	Participant 6	
University	MQ	MQ	MQ	MQ	MQ	UNSW	5 MQ 1 other Uni
Student type	Domestic	Domestic	Domestic	Domestic	International	International	4 Domestic 2 International
Course type	PG	UG	UG	UG	UG	PG	4 UG 2 PG
Prior experience with RPL	Had applied previously	Considered applying previously	Considering applying in the future	Had applied previously	Did not consider applying	Did not consider applying	2 Previously applied 2 Did not consider applying 1 Considered but did not apply 1 Considering to apply

Usability tests

KEY FINDINGS

RPL at MQ as a whole

- Participants appreciate the option to apply for RPL and that MQ offers it
- MQ is perceived as the only University that recognises non-formal prior learning
- There is a lack of certainty that prior learning will get recognised even if they apply for it

Specific to designs tested

- Unclear understanding of the Credit Estimate
 - Once understood, perceived as a great initiative
- The relationship between the Credit Estimate and the actual application form was confusing
 - Perception that they would have to “fill 2 forms” to apply for RPL

Participants were able to clearly identify appropriate information to input in the context of these forms

Usability tests

RECOMMENDATIONS

- Clear explanation of what is the credit estimate and how it works
 - Better use of Infographics - the existing Infographic was very much appreciated
 - Clear explanation of how completing the estimate can ease the application process
- More transparency in how RPL will be considered / evaluated
- Minor changes to copy and layout will greatly improve design comprehension (documented in Figma file directly)

Usability tests

ADDITIONAL CALL-OUT

One participant alluded to a negative perception of RPL.

If RPL is advertised and shown as an incentive to study at MQ, they'd expect their peer group to be students who're not interested in completing the full course. This would make them pause applying at MQ since they're not sure their peers will be as engaged in their education.

While this was just one participant, it may be worth researching this thread of perception of RPL further.

Thank you

(YOU)^{us}



MACQUARIE
University
SYDNEY · AUSTRALIA