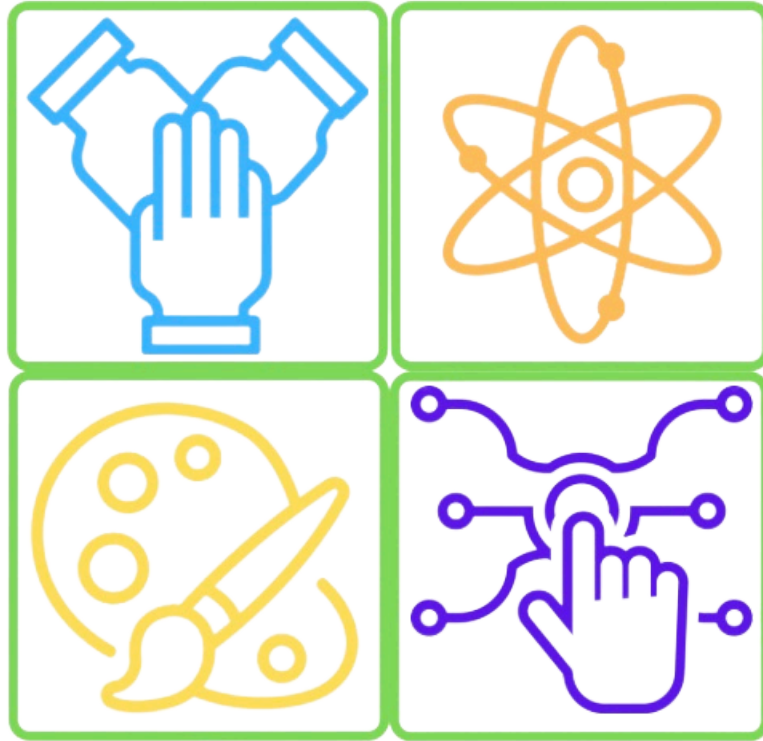


iLead Kids



Camp

Parent Handbook

Center information:

iLead Kids Camp and Academy
7027 Knightdale Blvd.
Knightdale, N.C. 27545

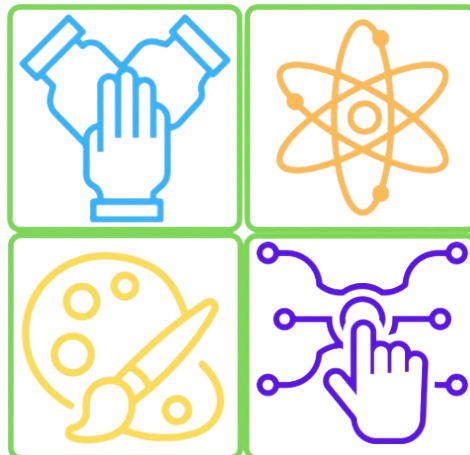
Yashida Vinson-Director/Owner

Website: www.iLeadKidsCamp.com

Email address: info@iLeadKidsCamp.com

Phone Number: (919) 581-2180

iLead Kids



Camp

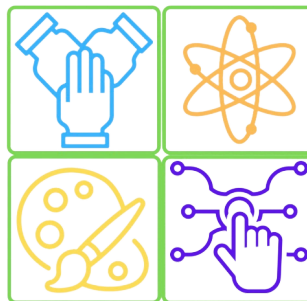
Mission Statement:

To provide a safe, engaging environment, that cultivates learning for school age students by building leadership skills, character building and entrepreneurship, by providing year around programs.

Community Partners:

The Wakaboomee Program
Boy Scouts of America
Mobile Music Education for Kids
Community Learning Garden
ACE Center

iLead Kids



Camp

Hours of Operation:

Monday-Friday
7:00 a.m.-5:30 p.m.

(Students must be dropped off before 10:00 a.m.)

KinderKamp
8:00 a.m.-12:00 p.m. (AM Session)
1:00 p.m.-5:00 p.m. (PM Session)

Programs:

Before/After School Care
Track Out Camp
Summer Camp
Transportation Services
Kinder Kamp-Pre-K
Enrichment Programs
Tutoring



Payments:

Weekly Tuition is due Friday for the upcoming week. Weekly invoices for the upcoming week will be sent on Wednesdays.

Monthly tuition is due on the last day of the current month.

Monthly invoices will be sent two days prior to the end of the month.

All tuition payments will be made through the Brightwheel App.

***Tuition is applicable for the following programs regardless of attendance (including program closures): KinderKamp, Before/After School Care and Transportation. Tuition is based on enrollment not days in attendance.**

Late Fees:

Late payment: \$20 will be added to accounts if payments are not made as scheduled. Students with unpaid accounts will not be permitted to attend any programs until accounts are cleared.

Late Pick-up: A \$1.00 per minute, per child will be added for late pick up. Late fees must be paid prior to the students return to the program.



Program Tuition:

Before School Care: \$350/month

After School Care: \$350/month

Before & After School Care: \$650/month

Track Out Camp: \$400/3 week session

****Payment is due at monthly****

Before School Care: \$100/week

After School Care: \$100/week

Before & After School Care: \$200/week

Track Out Camp: \$145/week

****Payment is due weekly****

Daily Drop-in Care

\$50/per day

Enrollment:

The enrollment process is through the Brightwheel portal. Visit our website at www.iLeadKidsCamp.com.

Enrollment information will need to be updated annually or anytime there is a change in information. These changes can be made in the "Profile" tab.



Summer Camp:

Summer Camp is 10 weeks of fun, engaging adventures, weekly field trips and hands on learning experiences.

Summer Camp registration fee includes a t-shirt and MOST field trips. Additional fees may be required for some field trips.

KinderKamp:

Students enrolled in KinderKamp are enrolled from August to June. The program has two learning Pods. PreK 1-Three year olds. PreK 2-Rising Kindergartners. At the end of the school year there will be a "Moving Up" Ceremony for PreK 1 and "Graduation for Pre-K 2.

Before and After School Care:

Before and School Care provides transportation to and from select schools.



Track Out Camp:

Track Out Camp is available for all school tracks including modified school calendars. Students will have weekly field trips, hands on learning experiences and academic enrichment.

Transportation Services:

Transportation services are provided to and from school, home and extra curricular activities. Fees for this service are based on mileage.

Parent Engagment:

Parent volunteers for events, classroom support, field trips and program initiatives are strongly encouraged and welcomed .

Behavior Expectations:

Students are expected to use good choices and best behavior practices. Students who's behavior affects the safety and well being of themselves, other students or staff will not be permitted to attend the program.



Meals:

Students will bring their lunch, snack and two bottles of water to camp each day. During the warmer months additional water may be needed.

Campers can bring in breakfast to eat at the center. Breakfast must be finished by 9:00 a.m.

There is a microwave available to warm meals. However, we encourage "ready to eat" options.

Please provide an ice pack to keep food cold.

Please include utensils.

Medication:

ALL medication to be administered must be by prescription. Parents must complete all required medical forms before medication can be administered. No over the counter medication will be given.

Personal Belongings:

Please label all personal items with your child's name. Each child will have a basket to put their items in. ALL cellphones, video games, or other electronics are prohibited. iLead Kids Camp **IS**

NOT responsible for any lost, stolen or damaged items. Send an extra set of

clothes if your child is in our

KinderKamp program.



Sign-In/Sign-Out:

Sign-in and Sign-out is through the Brightwheel App. Please make note of your four digit code. If someone is picking up your child who isn't listed on their pick up list you MUST notify us in writing.

A Photo ID is required to pick up.

BrightWheel Portal:

Download the Brightwheel App in your App Store.

Through the app you can send messages, make payments, register for programs, and update information. This is also a way for us to send photos, incident reports, and tax statements.

This is our main way to communicate with parents.

Sick Policy:

Students with a fever, diarrhea, vomiting are not allowed to attend the program. Students must be symptom free for 24 hours before returning to the program. Any exposure to COVID or COVID symptoms are not permitted to attend the program.



Withdrawal/Dismissal Policy:

A two week notice is required for withdrawal from KinderKamp and Before and After School Care Programs.

We reserve the right to terminate care for students using our own discretion.

Dress Code:

Campers should dress comfortable. No open toe shoes permitted. Physical play is a part of our daily routine.

Dress to get messy. We often paint and conduct messy science experiments.

Drop-In Care:

Drop-in Care is on an as need basis. Spots are first come first serve. Please call or send a message in the Brightwheel App to check availability for care.



Daily Schedules:

Daily schedules include the following:

Free Play

Morning Huddle

Small Group Activities

Team Building

Character Building

S.T.R.E.A.M. Labs

Lunch Time

Powerhour (Instructional Time/Quiet Time)

Music & Movement

Snack

Outside Learning Lab



Annual Events:

Holiday Party
Graduation (KinderKamp)
Family Day
Mother's Day Celebration
Father's Day Celebration
Spring Event
Unity Day (Community Service)

PTCA:

Parent, Teacher and Community
Advisory Board



Center Closings:

MLK Day
Good Friday (Spring Family Day)
Memorial Day
Juneteenth (Unity Day)
Summer Vacation-1 week in June
Independence Day
Thanksgiving
Christmas
Teacher Workday (Quarterly)

****A calendar with exact dates will be given****

