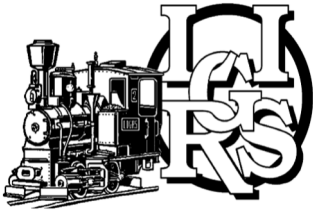


February 2024

Annual Auction Meeting  
Saturday, February 10, 2024  
11:00 a.m.-3:00 p.m.

103 Grumman Rd W, Bethpage, NY 11714



**Come on Down!**

Start off the new year by coming down to the **Saturday February 10th** LIGRS meeting at **11:00 am**, and join the entire auction team for another great LIGRS Annual Auction.

**Consider assisting Ed Assaf as an alternate auctioneer when needed.**

Don't have room for all of those new trains? The LIGRS Annual Auction is the perfect solution. So clean out the attic, closet, basement and/or garage and bring all those unwanted train related



items to February's Annual LIGRS Auction or donate them to the club. Watch the LIGRS auction team perform its magical alchemy by transforming those excess trains into cash.

For our train challenged members, clean out that bank account and watch the auction team transform those green-backs back into magnificent trains. The auction is a wonderful event that combines aspects of *Let's Make A Deal*, *The Price Is Right* along with a bit of *Family Feud*. Come down early and lend a hand logging in auction items, become a "Vanna" for a day by displaying items or help out with the auction items.



Please contact Paul Simon by phone **NOT EMAIL** at 631 499 3872 if you can lend a helping hand at the auction.

Auction rules appear on page 6 of this issue of Smoke n' Cinders.



**Attention Sellers: Anyone planning to auction 12 or more items, please contact Paul Simon to arrange to pre-register your items before the date of the auction meeting. (Not the day of the auction) By phone NOT EMAIL**

**Inside this issue:**

View From the Cab	3
Lou Caputzel Photos	4
In Memory of Paul Deifel	5

**This Month's highlights:**

- GRNews p 2
- February photo contest winner p 5
- March Auction notice and rules p 6

THE NEWSLETTER OF THE LONG ISLAND GARDEN RAILWAY SOCIETY INC.

# Smoke n' Cinders



# Smoke n' Cinders Staff

# LIGRS Officers



**Editor**  
 Louise Sewall  
 631.486.2579  
 louisesevall@gmail.com

**Web Master**  
 Louise Sewall  
 631.486.2579  
 louisesevall@gmail.com

**Club Contact: Tom Rizzo**  
 (631) 470.2217  
 32 Semon Road,  
 Huntington, NY 11743  
 tomjudyriz@optonline.net

**President ('23-'24)**  
 George L. Stamataides  
 718.786.8520  
 glstama1@earthlink.net

**Vice President ('24-25)**  
 Ray Shelton  
 516.681.3976  
 rayshelton@verizon.net

**Treasurer ('24-25)**  
 Ed Assaf  
 516.443.2244  
 ebassaf\_ligrs@earthlink.net

**Secretary ('23-'24)**  
 Pat Russo  
 631.332.0679  
 pokey0328@gmail.com

**Membership Dir. ('24-'25)**  
 Anthony Bliss  
 631.413.7647  
 anthony.bliss87@gmail.com

**Dir.-At-Large ('24-'25)**  
 Tom Rizzo  
 631.470.2217  
 tomjudyriz@optonline.net

**Dir.-At-Large ('24-25)**  
 Fred Bossert  
 631.252.2009  
 timberpatch@icloud.com

**Program Director ('23-'24)**  
 Anthony Marino  
 516.474.4678  
 anthonymarino38@gmail.com

**Dir.-At-Large ('23-'24)**  
 Paul Bonney  
 516.456.4520  
 pbonney@schools.nyc.gov

**OFFICIAL CLUB eMail**  
 LIGRSWME@gmail.com



## 2024 LIGRS Meetings & Events Schedule

Good & Welfare	Eileen Wagner	631.584.6619
Module Coordinator	Ed Assaf	516.443.2244
Quartermaster	TBD	
Club Merchandise Coordinator	Georgie Gaherty	631.549.3933
Transportation Coordinator	Bruce Kropp	631.789.4090

Date	Program/Notes	Time	Place
Mar. 9, 2024	General Meeting	11:00 AM	Bethpage Senior Center
September 2024	General Meeting	11:00 AM	Ed Assaf
Oct. 13, 2024 SUNDAY	General Meeting	11:00 AM	Mike Kmeth

As you can see we will be in need of hosts for some of 2024. Please contact Anthony Marino, our program director, and be the first to claim your preferred month. We are looking forward to seeing your wonderful layouts and socializing with you.

## From Ted Yarbrough of GRNews



You are likely aware that there will be no national garden railroad convention this year. Several groups are hosting regional events to keep all the modelers together until 2025 and the convention in Sacramento. The newest regional will be the Southeast Regional in Atlanta August 23-25. There will be approximately 15-20 garden railroads open for touring on Friday and Sunday with a huge all scale model train show on Saturday that will emphasize G Scale vendors. A buffet meal is being planned for one of the evenings. The Georgia Garden Railway Society will keep updating the info on their web page and through social media. [Georgia Garden Railway Society \(ggrs.info\)](http://ggrs.info)

I hope some of your members will make the trip to Georgia as I would love to meet them!

The Northeast Large Scale Train Show, East Coast Large Scale Train Show, and the Big Train Operators Club Convention all will be happening in 2024.



## View From The Cab



Hi, Thawed Out Members and Friends,

Well, January wasn't polite to start off 2024. We switched tracks heading for a triple the fun stop at our next station, February 10, 2024, at the Bethpage Senior Center.

The train departs at 11AM. First stop will include our meeting and delicious luncheon prepared by our very own Master Cook engineers Anthony Marino and Bruce Kropp. They are preparing Swedish Meatballs, Vegetable Lasagna, and Stuffed Turkey Breast, Shepherd's Pie, Caesar Salad, Fresh Dinner Rolls,

Weight Lookers Cookies, Coffee, Soda and water.

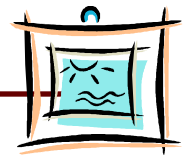
We have also invited all of our great member chefs to bring along their favorite award-winning surprise dishes. Please let Anthony Marino know what you're planning to bring so we don't end up with too many of the same great dishes. Everyone PLEASE let him know if you're coming so they can be sure to load the dining car with enough for everyone. [anthonymarino38@gmail.com](mailto:anthonymarino38@gmail.com) THANKS!!

The Second stop will be The Long Island Garden Railway Society Annual Auction. Be part of the fun by bringing all your great stuff that you have been moving from place to place to find a home for it, while making a few bucks for you and the club.

Speaking of a few bucks, our club membership is now on a calendar year, January 1 to December 31. If you have already paid your dues you are in good standing through December 31 2024. The horn on our club train is now blowing loud and clear for you to send in your dues ASAP. It will make life easier for our treasurer.

Continuing to stop THREE, one day before the Super Bowl we will have a 50/50 SUPER BOWL POOL. \$1:00 Per Box So start thinking which boxes you're going to pick for a chance at \$50.00.

## Found this Joke



Train left overnight on the wrong side of the tracks.



# Lou Caputza Photos

Lou's photos have been monthly winners in our photo contest many times. This month he has sent a number of photos taken during our snow days. Hope you not only enjoy seeing them but are also inspired to take some yourself.



## In Memory

---

Dave Smith notified us of the passing of former member Paul Deifel. The following memorial was posted on his Facebook page. Paul had posted the layout photo shown below as the cover photo on his page so we know he still loved the hobby. He is remembered fondly by our long time members.

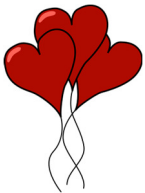


DEIFEL, Paul 75, of Port Richey, died January 1, 2024. Survived by wife, Diane; daughter, Michele; six grandchildren; three Great grandchildren. Paul will be placed at Florida national cemetery in Bushnell FL with military honors on February 5<sup>th</sup>, 2024. A small locomotive will be placed in the niche with him.



## Monthly Photo Contest Winner

---



This month's winning photo, "Nobody's Coming", was taken by Lou Caputzal of his Pop's Trains layout in the snow.

## Our 2024 Auction



Start off the new year by coming down to the **Saturday Feb. 10th** LIGRS meeting at **11:00 am**, and join the entire auction team for another great LIGRS Annual Auction.

**Consider assisting as an alternate auctioneer.**

Don't have room for all of those new trains? The LIGRS Annual Auction is the perfect solution. So clean out the attic, closet, basement and/or garage and bring all those unwanted train related items to February's Annual LIGRS Auction or donate them to the club. Watch the LIGRS auction team perform its magical alchemy by transforming those excess trains into cash.

For our train challenged members, clean out that bank account and watch the auction team transform those green-backs back into magnificent trains. The auction is a wonderful event that combines aspects of ***Let's Make A Deal***, ***The Price Is Right*** along with a bit of ***Family Feud***. Come down early and lend a hand logging in auction items, become a **"Vanna"** for a day by displaying items or help out with the auction items. Volunteers needed. Try a hand, or is it voice, at being an auctioneer. If you're bashful, you can still come down early and lend a hand logging in auction items, become a **"Vanna"** for a day by displaying items or help out with the auction items. Please contact Paul Simon at (516) 541-4837 if you can lend a helping hand at the auction.

**The Auction Rules are listed below and also posted on our website  
LIGRS.com>Member Info>Forms,Rules&Policy>LIGRS Rules**



**Attention Sellers: Anyone planning to auction 12 or more items, please contact Paul Simon BY PHONE ONLY to arrange to pre-register your items before the date of the auction meeting. (Not the day of the auction)**

1. Each auction participant, seller or buyer, must purchase an auction paddle.
2. A unique item number identifies each auction item.
3. There are no minimum bids; the highest bid purchases the item regardless of amount.
4. The owner of the item can bid until their desired price is reached. (If the owner's bid is the highest bid, the item is a "buyback").
5. Each item auctioned is subject to a commission based upon the Commission Fee Schedule. "Buybacks" are subject to commission of 50% of the Commission Fee Schedule.
6. Any unclaimed items will be returned to their owner, commission free.
7. The Auctioneer's decision in determining the winning bidder is final.
8. All items are sold "as is, where is". LIGRS does not guarantee the suitability or condition of any item auctioned.
9. The Treasurer has sole discretion with regard to method of payment, either cash or check, for winning bids and sellers' proceeds.
10. **GOOD LUCK, HAPPY BIDDING and HAVE FUN!**  
Some auction items may be offered as lots which consist of multiples of the same or related items (e.g. track, switches, same road name passenger cars, etc.) offered from the same seller. The winning bidder will have the option to purchase one or more of the items at their winning bid price. In the event the winning bidder does not purchase the entire lot, the runner-up bidder will be offered the remaining items in the lot at the runner-up bid price. In the event the runner-up bidder declines any or all of the remaining lot, the remaining items will be up for re-bidding. This procedure will be observed in order to facilitate auction timeliness as well as provide the most equitable price to the seller. The difference between the winning bid and runner-up bid is in effect a premium for the winning bidder to select which items of the lot that they wish to purchase. 'Like items' from different sellers will be offered as separate items



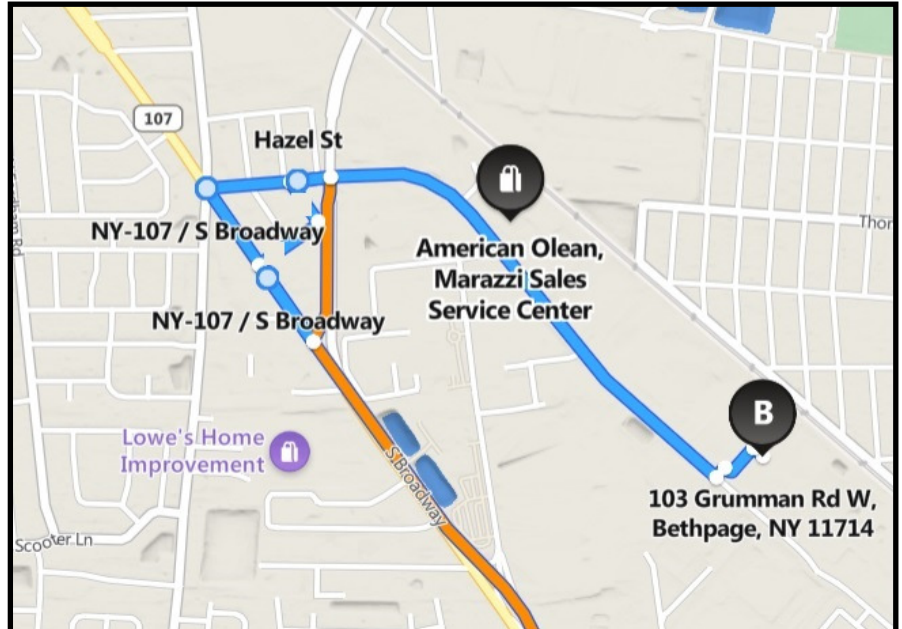
**Directions to February Meeting**  
**SATURDAY the 10th, 2024 : 11:00am**  
**Location Bethpage Senior Center,**  
 103 Grumman Rd W, Bethpage, NY 11714



**Directions:**

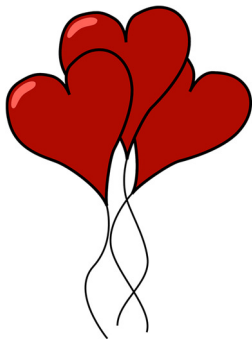
**From the LIE or Northern State Parkway**

Take the exit for Rt 107 South  
 Continue South until Hazel St. then turn left  
 Hazel St. becomes Grumman Rd W  
 Senior center is on the left, set back from the road but has a large blue sign at the driveway entrance



**From Southern state or other points South**

Take the exit for Rt 135 North  
 Turn off at the ramp for exit 7W, West towards Hempstead  
 Turn right on rt 107 Hicksville Rd.  
 Continue **North to Hazel St and turn right**  
 Hazel St. becomes Grumman Rd W  
 Senior center is on the left, set back from the road but has a large blue sign at the driveway entrance



**2024 Dues Reminder:** Send in your 2024 dues so that it may be a "Happy Train Year."

Individual memberships, the 1st member of a household, are \$50 per year.

Family Memberships, for members over 18 years old are \$15 for **EACH** additional member in the same household.

Students, age 18-22 is \$25.

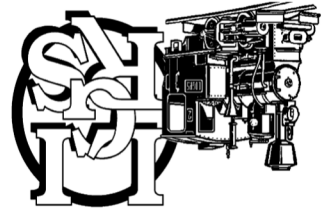
Please send a check made out to "**The Long Island Garden Railway Society, Inc.**" (full name please) for the appropriate amount to:

LIGRS, PO Box 2002, Massapequa, NY 11758

**Many thanks to those members who have already renewed their dues**

Questions? Contact  
**Anthony Bliss**  
**631.413.7647**  
 anthony.bliss87@gmail.com



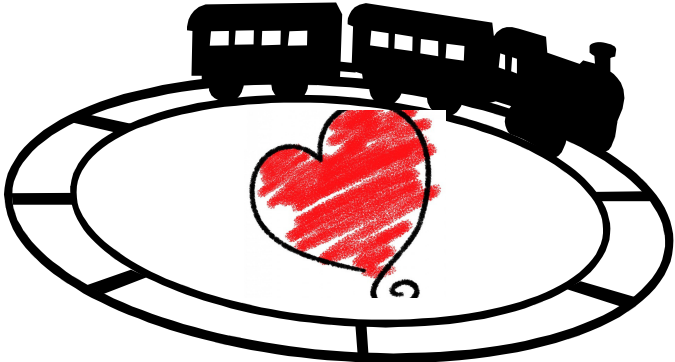


**THE NEWSLETTER OF THE LONG ISLAND  
GARDEN RAILWAY SOCIETY INC.**

Smoke n' Cinders at  
P.O. Box 2002, No. Massapequa  
NY 11758-2002

*Newsletter of the Long Island  
Garden Railway Society Inc.*

*Advertising Policy*  
Advertisement shall in no way be construed as an endorsement of any product, manufacturer, product or reseller by The Long Island Garden Railway Society, Inc. Commercial Ads or Ads from Non-members for large scale or garden railway products are at a rate of \$35.00/full page, or \$20.00/half page/issue. Artwork is the responsibility of the advertiser, at the discretion of the editor. Ads from Members for large scale or garden railway items are accepted at no charge and will run once. Ads may be repeated at the advertiser's request, space permitting. Ads should be submitted by e-mail to the editor. The deadline for ads will be the meeting prior to the next issue.



**Happy Valentines Day!**