

March 2021



Monthly Meeting  
March 21st  
SUNDAY  
In-Person  
Cradle of Aviation  
11:00 a.m.-3:00 p.m.



**ANNOUNCING!!**



Long Island Garden Railroad Society's

FIRST ANNUAL

HOLIDAY SUPER 50/50 Raffle

\$5.00 each.

Limited to 500 Tickets

You may reserve your favorite winning numbers

At [glstama1@earthlink.net](mailto:glstama1@earthlink.net) (first come first choice)

Drawing Nov. MEETING

**For our in-person March Meeting**

In accordance with our club COVID procedures as posted on our website and the requirements of the Cradle of Aviation all participants must wear masks.

A committee has been formed to safely serve the food provided.

When you enter the museum you must sign in at the Volunteer Sign In Table. We will be in an area near the entry ticket sales area but distanced from it and away from the general public.

Please see our website at [ligrs.club](http://ligrs.club) for full club policy. Go to Member Info > Forms, Rules & Policy and open the policy pdf file.

**Inside this issue:**

View From The Cab	3
From The Secretary	4
Tom's What the Heck Puzzle	7
Monthly Photo Contest Winner	7
Chic Chat -	8

**Special points of interest:**

- 2021 Nat. Garden RW Convention p 5
- In memory of p 6
- From Karl p 9



THE NEWSLETTER OF THE LONG ISLAND GARDEN RAILWAY SOCIETY INC

**Smoke n' Cinders**



<p><b>Editor</b> Louise Sewall 516.541.4837 louisesewall@verizon.net</p> <p><b>Web Master</b> Trish Iannacone 516.455.9259 ohmscrabtree@yahoo.com</p>	<p><b>President ('21-'22)</b> Mike Kmeth 631.757.3784 solarelectric@verizon.net</p> <p><b>Vice President ('20-21)</b> Steve Gaherty 631.549.3933 sgforthill@verizon.net</p> <p><b>Treasurer ('20-21)</b> Bob Sewall 516.541.4837 trebor11758@verizon.net</p> <p><b>Secretary ('21-'22)</b> Karl Wagner 631.584.6619 sgauge@optonline.net</p>	<p><b>Membership Dir. ('20-'21)</b> Tom Rizzo 631.470.2217 tomjudyriz@optonline.net</p> <p><b>Dir.-At-Large ('20-21)</b> Louie Cortese 516.681.0789 lvcjr54@verizon.net</p> <p><b>Dir.-At-Large ('20-21)</b> Pat Russo 631.277.1813 pokey21@optonline.net</p>	<p><b>Program Director ('21-'22)</b> Nick Guarino 631.595.2062 maryb492001@yahoo.com</p> <p><b>Dir.-At-Large ('21-'22)</b> Paul Bonney 516.456.4520 pbonney@schools.nyc.gov</p> <p><b>Dir.-At-Large ('21-'22)</b> Ed Assaf 516.443.2244 ebassaf@earthlink.net</p> <p><b>Dir.-At-Large ('21-'22)</b> Frank Clemente 631.838.0890 jstlookout@outlook.com</p>
<p><b>Club Contact</b> Tom Rizzo 32 Semon Road Huntington, NY 11743 631.470.2217 tomjudyriz@optonline.net</p>			

Good & Welfare	Eileen Wagner	631.584.6619
Module Coordinator	Ed Assaf	516.443.2244
Quartermaster	Frank Clemente	631.838.0890
Video Librarian	Nick Guarino	631.595.2062
Club Merchandise Coordinator	Georgie Gaherty	631.549.3933
Transportation Coordinator	Bruce Kropp	631.789.4090

## 2021 LIGRS Meetings & Events Schedule

Date	Program/Notes	Time	Place
Mar. 21, 2021	Monthly Meeting	11:00 AM	Cradle of Aviation
Mar 25-Apr 4, 2021 Set up Mon., 3/22-24 Take down 4/5	Modular Display	9:30 AM to 5:00 PM	Cradle of Aviation
Apr., 2021	Monthly Meeting	11:00 AM	TBA
May 15, 2021 <b>SATURDAY*</b>	Monthly Meeting	11:00 AM	Frank Clemente
Jun., 2021	Monthly Meeting	11:00 AM	TBA
Jul. 17, 2021 <b>SATURDAY*</b>	Monthly Meeting	11:00 AM	Betty Engel & Jay Geyer
Aug. 21, 2021 <b>SATURDAY</b>	Summer Picnic **	TBA	LI Live Steamers
Sep. 18, 2021 <b>SATURDAY*</b>	Monthly Meeting	11:00 AM	Geri Coney & Bill Arndt
Oct. 16, 2021 <b>SATURDAY*</b>	Monthly Meeting	11:00 AM	Dorothy Mahan
Nov., 2021	Monthly Meeting	11:00 AM	
Dec., 2021	TBA		

\*Saturday home-hosted meetings have a rain date the following day, Sunday  
 \*\* Subject to pandemic restrictions

## View From The Cab



Finally this week I can see some areas of my garden railroad. Up until not it was buried under 18 inches of snow. This winter I didn't run any trains outside. Other years I would be drooling to get the plow out but unfortunately I'm rebuilding parts of my railroad and one key trestle is out of service. Maybe next year I'll have the railroad completely rebuilt and finished, and maybe next year I will have my snow rotary done (*wishful thinking*) but there's always hope.

February's monthly meeting was again on Zoom. Zoom member attendance and proxies were disappointing. We did not have enough total to have a working meeting.

Sunday, March 21, 2021 @ 11:00am we are having an in person meeting at the Cradle of Aviation. The meeting will be held on the left side of the atrium, the same side as the ticket booth only about 60 feet further in. We are planning on having coffee and doughnuts, maybe bagels. Please be patient, as we have to carry everything in.



On Sat., March 6<sup>th</sup> we are having a Board of Directors' meeting in person at the Cradle; one of the items to be discussed will be changes to proxy requirements. So far this year we did not have enough members to have an official meeting.

We are going to have another setup and days of running trains again at the Cradle. So if you have not run your trains this winter, this is a great opportunity to do so. Setup will be Monday, March 22, 2021; time will be announced at the March

meeting and by e-mail. Run days will be Thursday, March 25<sup>th</sup> thru Sunday, April 4<sup>th</sup>. Take down will be Monday, April 5<sup>th</sup>. So, if you can, come out and help us set up, it would be great. We now have many days to run your trains, so come out and share track with other club members.

Personally I am hoping things will open up later in the year. I cannot wait to do outdoor layouts again.

Other news, Karl, Ray, Anthony M. and I had a tele conference with Nassau County in reference to holding meetings, storing trailers and participating in displays at Old Bethpage Village. It was a good call and we walked away very positive and currently waiting for an answer.

I hope to see all who read this "View from the ab" to be at the next meeting and to come out and run their trains at the Cradle.

I know we haven't had many activities this past year, sad, but I want you all to know that the Board of Directors is working hard behind the scenes to keep the club going and to be ready when things do open up. There are many challenges ahead. We are committed to going forward. In next month's "View from the Cab" I hope to have more information on other events. Stay tuned.

God bless and please stay safe,  
Mike Kmeth



### REMINDER:

A link to our Proxy statement can be found on the "member info>forms, rules & policy" tab of our website, LIGRS.club. If you are unable to attend any monthly meeting, please be sure to fill one out and give to our president or a BOD member to ensure a quorum so that an official business meeting may be held.

# From The Secretary General Meeting Notes



## LONG ISLAND GARDEN RAILWAY SOCIETY INC.

NOTES OF THE GENERAL MEETING ON ZOOM  
SATURDAY, FEBRUARY 20, 2021

President Mike Kmeth asked for a moment of silence for the Men and Women who are serving this country and especially for those whose lives were lost protecting our freedom. Remember our club family and our own family members, whose lives were lost this past year.

President Mike Kmeth asked that the Zoom meeting be opened @ 11:15 AM. As we only had 24 present and 4 proxies, not enough for a quorum, this will be an unofficial meeting, notes only.

**President Mike Kmeth** - Welcomed us all to the February Zoom meeting. Mike noted about the letter that was sent out from Ray Shelton. Please fill out the post card and send back to Ray ASAP. This will help give your BOD a better understanding of what our membership wants and what direction the club needs to go in.



**Treasurers' report** - was given by Bob Sewall. Bob gave a synopsis of the report: The YTD as of 2/20/20 Starting @ \$9,698.98 Ending @ \$9,803.97

Bob filed the IRS form 990-N.

Should anyone have any questions about the club finances please contact Bob and he will be happy to answer any questions you have.

**Membership report** - was given by Tom Rizzo. Our membership is: Individuals 27, Family 16, Extended Families 2, Life 5, honorary 3, Junior 4 total voting members 70, Total membership 77

**Program Directors report** – Nick Guarino noted the only display at this time will be a spring display back at the Cradle of Aviation. Set up is March 22, 23 & 24 Run dates are March 25 thru Easter Sunday April 4. Take down will be Monday April 5. Time to be determined. All but the June meeting is booked for in person. June is still open waiting to hear back

**Modular Coordinator** -- Ed Assaf was unable to make today's meeting.

**Bob Russo Memorial Fund** – No new info at this time

**Anniversary for 2021 (30years)** – No new info at this time.

**Show & Event Reviews:** There were no shows or events

### Upcoming Shows & Events Shows:

**Cradle of Aviation** – Set up is March 22, 23 & 24 Run dates are March 25 thru Easter Sunday April 4. Take down will be Monday April 5.

**Picnic** – we are tentatively scheduled with Long Island Live Steamers at the park if they are allowed to open for Saturday August 21

**Photo Contest** – Congratulations to this month's winning photo, "Over the Valley", was taken by Sue Cortese of their The Northern Valley RR. Please remember to take pictures and send your best picture to Louise Sewall.

**Chic Chat Corner** – Louise Sewall wrote about what she saw at the Cradle of Aviation. The Picture shows Ed Assaf mentoring junior member Matthew Bonney on how to work the storage yard section of the display. Remember Ladies and Guys you can talk about anything. So let's get something going for next month. Just send it to Louise.

**Club Resource Library** – The list of books, videos and plans are on the clubs website. Just contact Nick Guarino and he will bring it to our next in person meeting for you to borrow.

**Club merchandise** – Please see Georgiana & Steve Gaherty at our next in person meeting if you wish to purchase any club items such as hats, shirts, jackets, pins and DVD's.

**Aluminum Can Tabs** – Please give them to Eileen & Karl Wagner. This helps fund the Ronald McDonald House for Children needing treatment and their families. Please check them with a magnet as only Aluminum are used NOT STEEL

### New Business:

New location – Mike Kmeth, Ray Shelton and Karl Wagner went on Jan 19 to look at the Wantagh Preservation Society's Wantagh Train station. It turned out not to be large enough for us to hold meetings at.

*(continued on next page)*

# From The Secretary General Meeting Notes



We had a conference call with the Nassau County Parks Commissioner Ms. Eileen Krieb. We felt we were on solid ground after the call, for maybe having new locations for our winter meetings and storage of our two trailers

Bob Sewall also suggested we look at the Oyster Bay Railroad Museum.

A request was made to have a module dedicated with the names of club members who have passed away. Nick Guarino and Tom Rizzo will look into this.

The BOD is looking into Sachem Holbrook Public Library as a possible location to do an outdoor show in the future.

A question of attendance came up “of what makes a Quorum” President Mike asked for a Bylaws review committee. Volunteer Chairperson is George Stamataides, and committee volunteers were Nick Guarino, Lou Cortese, Bob Sewall and Karl Wagner.

**Reminder there is a BOD meeting is set for Saturday March 6, 2021 @ 10 AM @ the Cradle of Aviation.**

**Next General meeting** will be on Sunday March 21 at the Cradle of Aviation. This is an **IN PERSON MEETING** at 11 AM. Refreshments committee Nick Guarino, Pat Russo, Georgiana Gaherty & Bruce Kropp



Meeting ended @ 12 PM.

Respectfully Submitted,

Karl Wagner

Secretary

## The 2021 National Garden Railway Convention

### Hindsight is 2021... Don't Miss Out.

The Nashville Garden Railway Society is honored to host the 36th National Garden Railway Convention in our beloved Nashville, TN. The event is scheduled to cover the days from May 31st, 2021 to June 6th, 2021. There are tons of exciting things in store for the convention so check out the information here and make your plans... see you in Nashville. <https://ngrc2021.com/> You can also re-register at that link if you had registered for last year.



The Nashville Garden Railway Society has a selection of highly detailed layouts you will be able to tour. On your tours you will see layouts running diesel, steam, and live-steam. The area has layouts with amazing hand-carved rock tunnels and retaining walls, numerous creative elevated track layouts, ground level garden environments, detailed indoor layouts, a botanical garden layout, and even a layout with over 2,000 feet of track – and still growing larger before 2020! The DGRS (Denver) and BAGRS (San Francisco Bay Area) clubs have been working closely with us and all have agreed to bump plans back by one year. So Denver will host in 2022 and the Bay Area in California will host again in 2023. Nashville will be the place to be in 2021. We will do our best to keep everyone up-to-date as we re-book events and venues in Nashville. If you have questions, please contact us at [ngrcnashville@gmail.com](mailto:ngrcnashville@gmail.com)



## In Memory of John Pizzuli and Joe Luginsland



Following is a reprint of a member profile first published in September 2013. Joe and John were two great friends who passed away just about one month apart.



Members John Pizzuli (left) and Joe Luginsland (right) are both involved with the modular group so that is where you will usually see them, although they were both at this year's summer picnic.

John, as an adult, bought himself an HO set which he assembled yearly around the Christmas tree. He purchased village buildings, which he loved to use to create a display. And as these collections go, it grew and grew.

John, lives across the street from Tom Rizzo who introduced him to the LIGRS and the modular group. He used to help Tom with some of the layout work in Tom's back yard. John joined the club and designed his first module as an Indian village. He then acquired another module and decorated it with western scenery, including cowboys and Indians. Now he has a 3rd module which includes covered wagons. John says it is really a shame to put all the work into transporting and setting up the display for only one day. He especially enjoys the Cradle of Aviation display which typically runs for a longer period of time.

With all of this equipment he really needed help. That is when Joe stepped up. Joe had seen a photo that John took of a display. He began coming and was enjoying the special club displays such as the one at the Cradle of Aviation.

So he now helps John with carrying around and setting up the modules, as well as socializing with the other members.

Joe, used to run a Lionel set as a child and was very disappointed when he returned from the service to discover that his mom had given the whole set to her best friend. He has ordered some HO trains and spends time laying the track out on the floor, running them and planning different layouts.

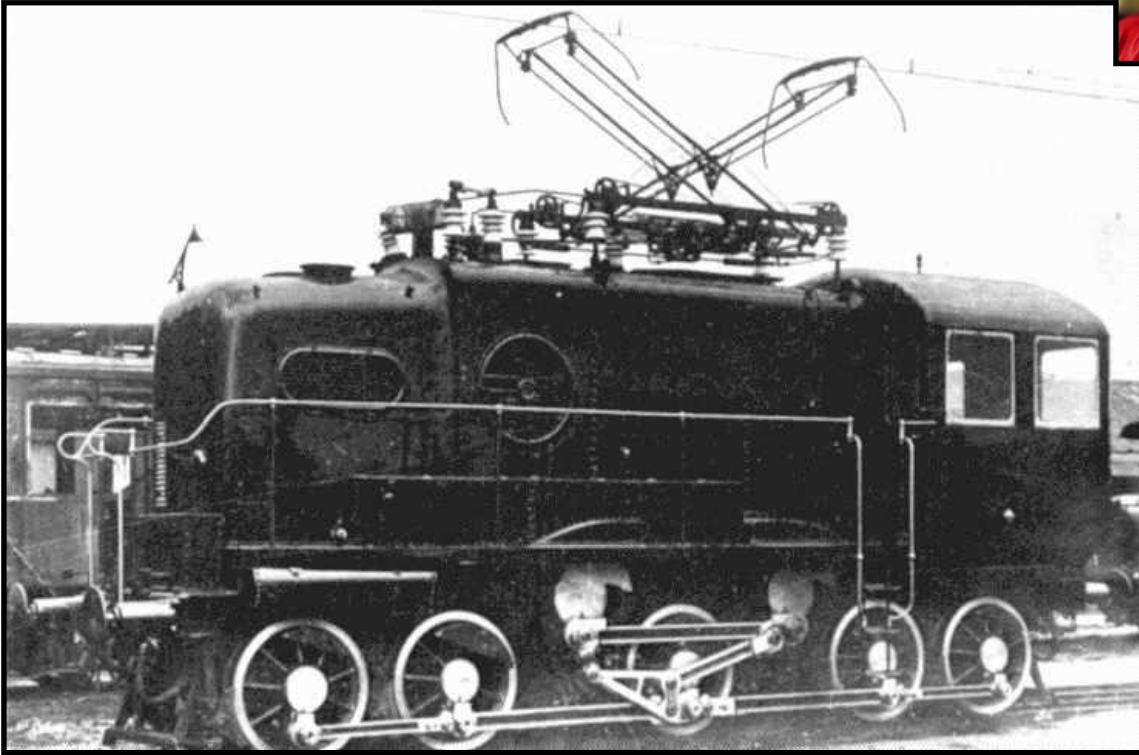
Both members are happy to hear that the modular group will again be setting up a display at the Northport Veteran's Nursing Home this November.



A GOOD FRIEND IS LIKE  
A FOUR-LEAF CLOVER,  
HARD TO FIND AND  
LUCKY TO HAVE.

—  
IRISH PROVERB

## Tom's What the Heck Puzzle (solution on next page)



## Monthly Photo Contest Winner!



This month's winning photo "Sweet Hollow Business District" was submitted by Karl Wagner and taken on Steve Gittelman's The Chichester to Sweet Hollow Branch of the NYC RR

# What the Heck Puzzle Solution



Here is a very odd early electric locomotive. I wonder if someone can make that linkage!

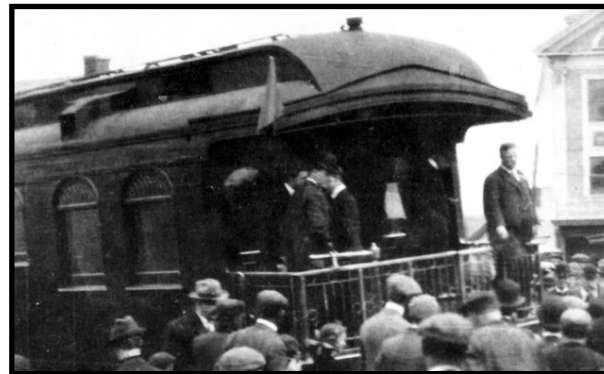


## Chic Chat Corner

I was having a chat with our son Rob on the phone the other day. He always has some strange facts and stories to relate. This time it was about a "legend" that in 1907 Teddy Roosevelt had asked for a cup of coffee while he was on the road. One was brought to him from the Maxwell House Hotel in Nashville. After finishing a cup of their namesake coffee he exclaimed it was, "good to the last drop." This endorsement appeared in their advertising for a few years.

To me it conjured up images I have seen of him campaigning at "whistle stops" which then brought me to remember his home on Sagamore Hill and the railroad station in Oyster Bay which he and his family and guests used when visiting the area.

Now of course the station is a part of the Oyster Bay Railroad Museum.



Nice destinations for when things open up.

Louise Sewall



Sagamore Hill



Train Station



Engine 35



# A Repeat Request from Karl Wagner



## Looking for old Smoke N Cinder issues

Hello to all our members.

I started collecting printed copies of Smoke n Cinders going back to the beginning of the club founding in 1991. I have made a lot of progress on this, and with many thanks to Walter Poppe and Richie McGorty I have many issues. Like many of us we sometimes misplace a few issues. I have starting putting together a history of the club with some highlight events. I am hoping to share this next year at our 30<sup>th</sup> anniversary with club members. I am still look for the following newsletters:

1991 all

1992 Jan, May, June, Sept, Nov, Dec

1995 April, Dec

1996 Dec

1999 July

2000 Dec

2001 Dec

2002 Dec

2005 Dec

2007 Jan

2008 Jan

2009 Jan

2010 Jan

I will make copies and return them back to you.

Thank you

Your Club Secretary

Karl Wagner



## REMINDER:

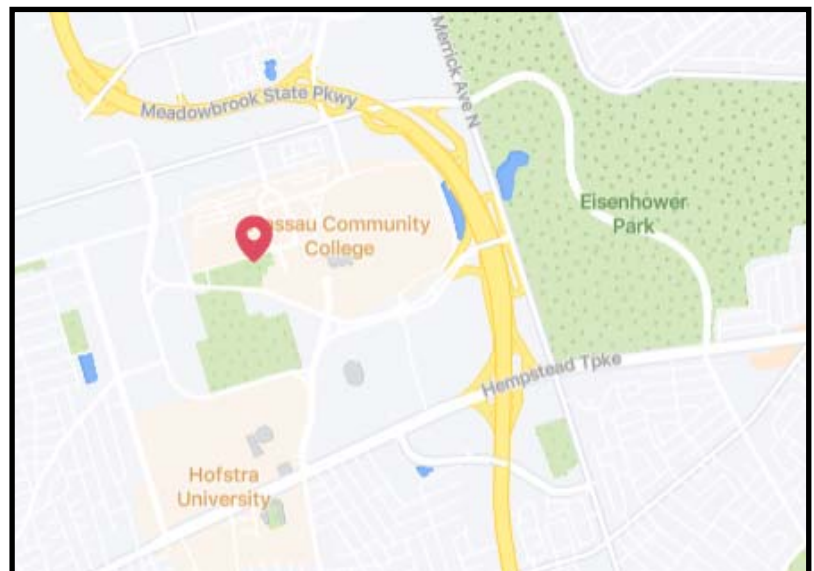
A link to our Proxy statement can be found on the "member info>forms, rules & policy" tab of our website, LIGRS.club. If you are unable to attend any monthly meeting, please be sure to fill one out and give to our president or a BOD member to ensure a quorum so that an official business meeting may be held.

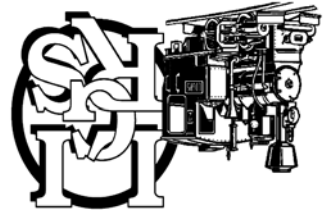


**Monthly Meeting**  
**March 21st SUNDAY**  
**In-Person at the Cradle of Aviation**  
**11:00 a.m.-3:00 p.m.**

<https://www.cradleofaviation.org/>

**Driving Directions** Meadowbrook Parkway to exit M4, follow signs to Museum Row which will put you on Charles Lindbergh Blvd, stay on Charles Lindbergh Blvd. to the second traffic light and turn right into the parking lot.





**THE NEWSLETTER OF THE LONG ISLAND  
GARDEN RAILWAY SOCIETY INC**

Smoke N' Cinders at  
P.O. Box 2002, No. Massapequa,  
NY 11758-2002

*Newsletter of the Long Island  
Garden Railway Society Inc*

*Advertising Policy*  
Advertisement shall in no way be construed as an endorsement of any product, manufacturer, product or reseller by The Long Island Garden Railway Society, Inc. Commercial Ads or Ads from Non-members for large scale or garden railway products are at a rate of \$35.00/ full page, or \$20.00/half page/issue. Artwork is the responsibility of the advertiser, at the discretion of the editor. Ads from Members for large scale or garden railway items are accepted at no charge and will run once. Ads may be repeated at the advertiser's request, space permitting. Ads should be submitted by e-mail to the editor. The deadline for ads will be the meeting prior to the next issue.



May your paths bloom with shamrocks, and your heart ring with songs, and the sky smile with bright sunshine all this happy day long.

**Happy St. Patrick's Day!**