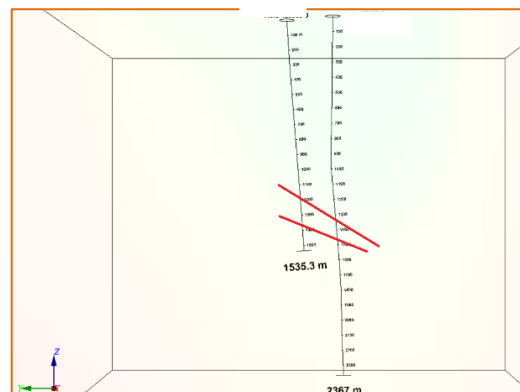
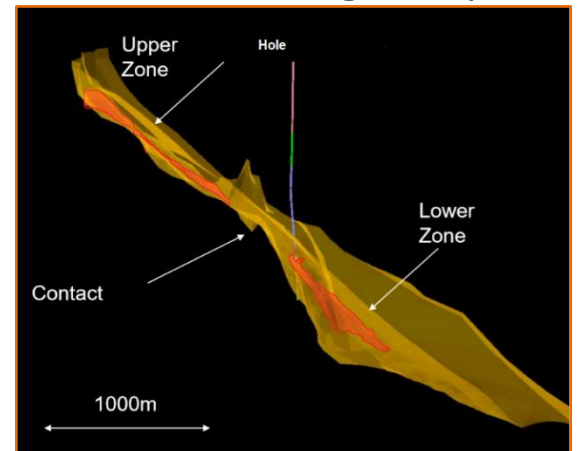


Vale – Norman Deposit CANADA

Nickel

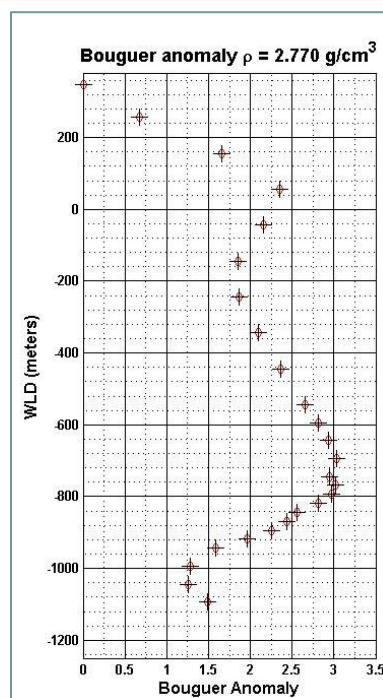
Borehole Gravity procedures have now been optimized with substantial cost reductions.

Contact Abitibi Geophysics to schedule a GraviLog survey.

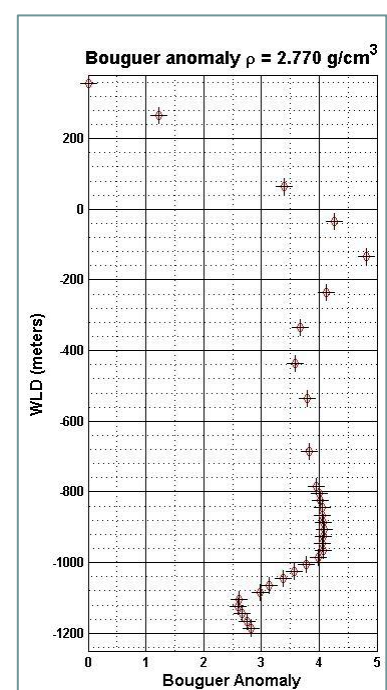


The Borehole intersects sulphides from 1400m to 1480m, but the upper half of this interval is very weak, disseminated mineralization averaging 10-20% Sulphide (SG= 2.8-3). The lower half of the intersection is much better, consisting mostly of massive to semi-massive sulphides grading above 50% Sulphide (SG=3.5-4)."

Our expertise,
your discovery



Total time to complete the log: 11.5 hours



Total time to complete the log: 15.0 hour