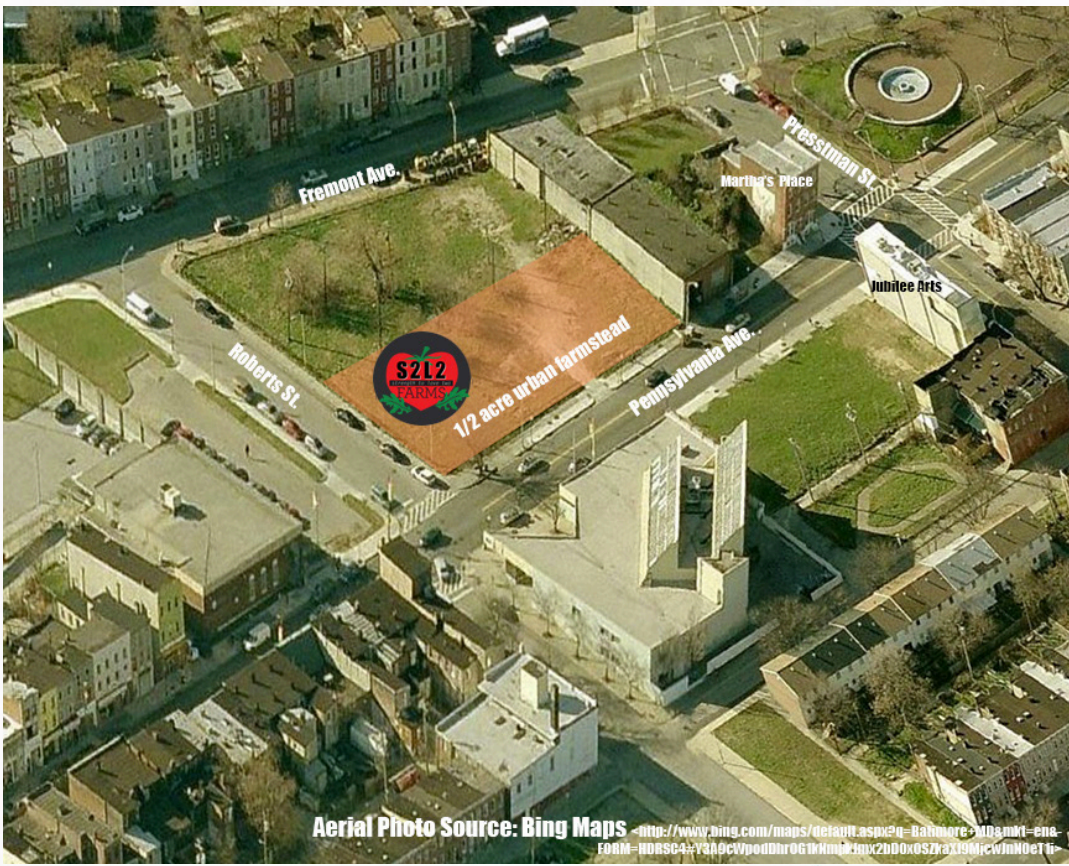


# Baltimore Growing Green Initiative

## The Farmhouse

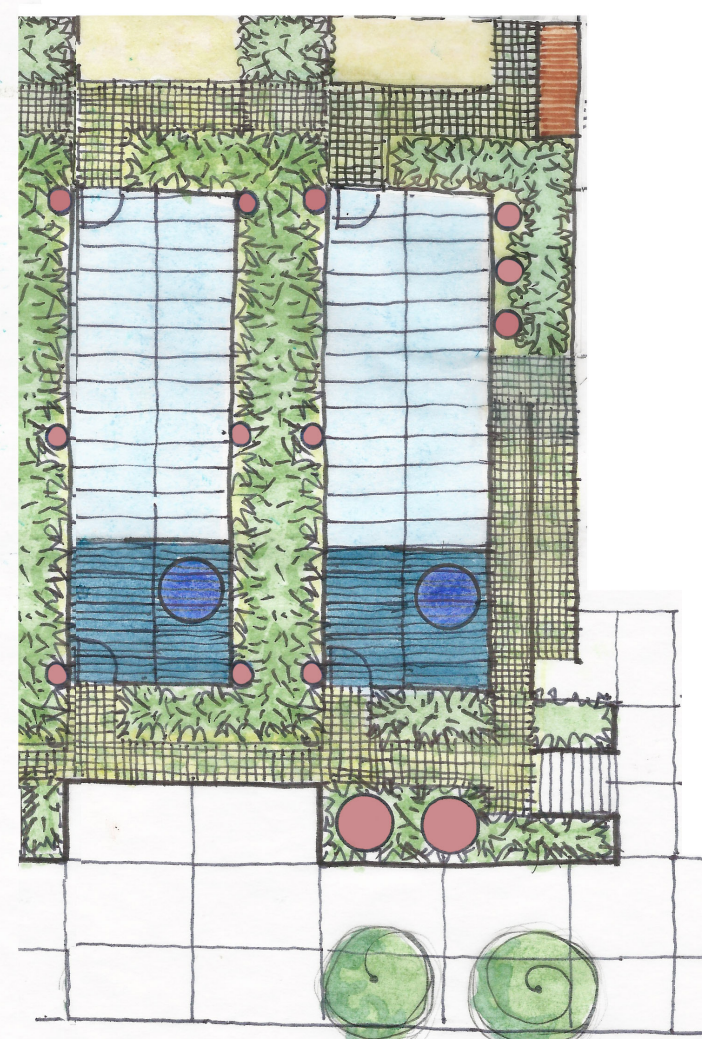
## The Farm



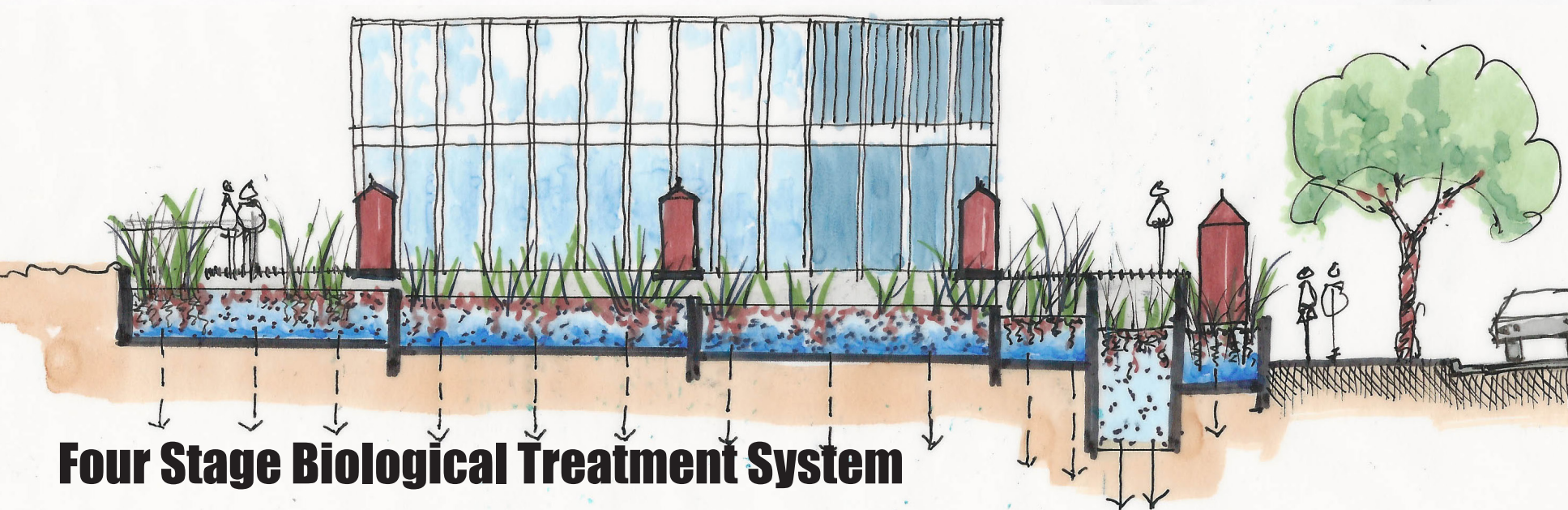
The Site

## The Market

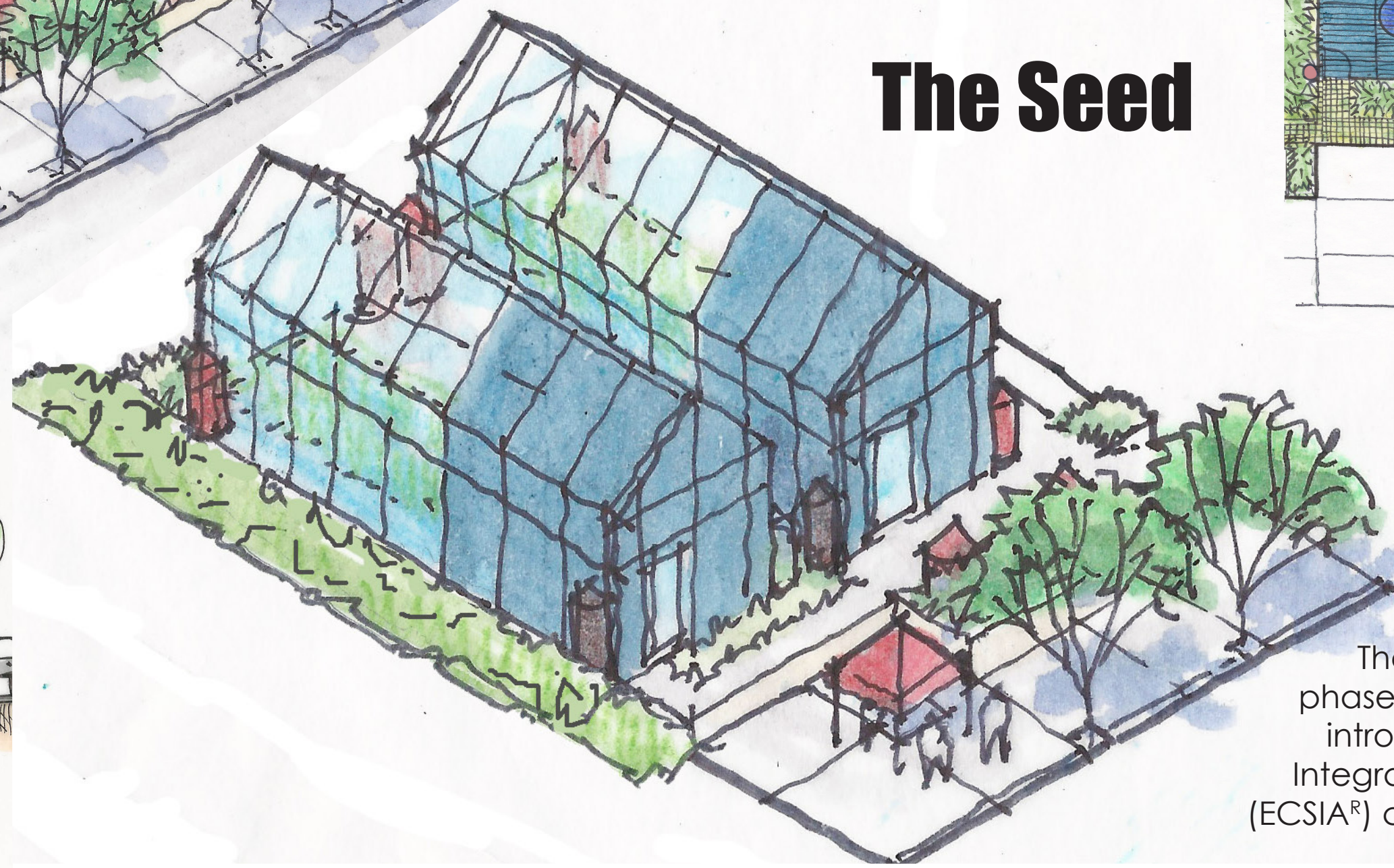
## The Seed



The Seed Plan



Four Stage Biological Treatment System



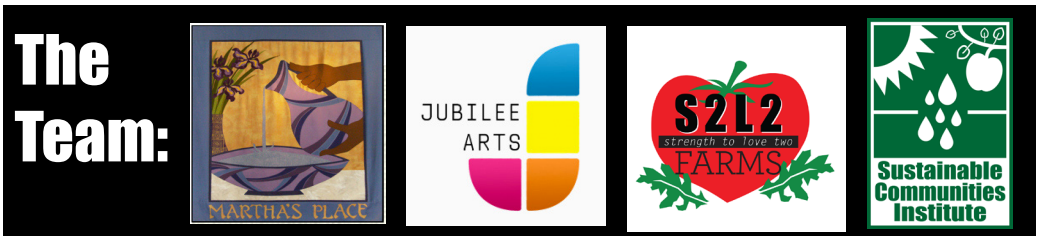
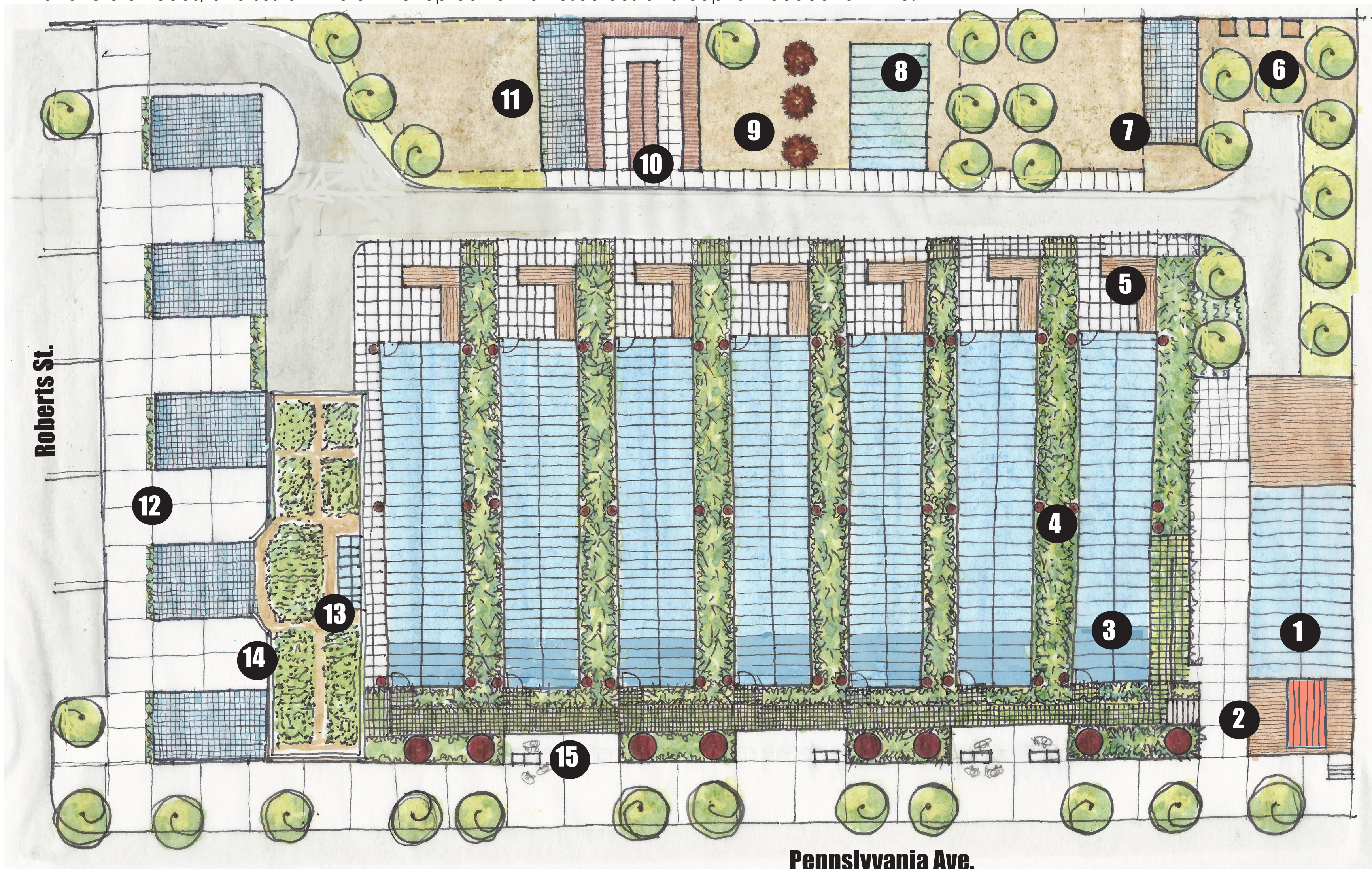
The Seed is the proposed phase one of S2L2F, a way of introducing the sustainable integrated agriculture system (ECSIA®) connecting community members with the site.

# Baltimore Urban Farmstead Initiative: S2L2F

Our Baltimore Growing Green proposal is the second generation "Strength 2 Love 2 Farm" in the Sandtown-Winchester neighborhood. It builds on the transformative success of the Newborn Community of Faith's amazing programs that include Martha's Place, Jubilee Arts and the first Strength 2 Love Farm. This project seeks to produce and distribute fresh, natural and organic food into daily life and thereby to convert food deserts to more healthy communities. The site is a half acre of vacant land currently under the care of the Newborn Community of Faith through the Adopt-A-Lot program. The residents of Martha's Place are targeted to manage and train at the farm to prepare food, form micro-businesses, and help transform the neighborhood.

The team, led by Elder Clyde Harris, has expertise to implement integrated urban food production and distribution systems that empower people, transform place and generate prosperity. The Baltimore Growing Green Initiative is an opportunity to bring the work Sustainable Communities Institute (SCI) is doing globally to the residents of West Baltimore to help communities and organizations interconnect key systems, address current and future needs, and sustain the uninterrupted flow of resources and capital needed to thrive.

- 1 The Farmhouse - residence, barn & greenhouse
- 2 Storefront S2L2F Cafe & Culinary Training
- 3 ECSIA Food System & Greenhouse
- 4 Biological Treatment System
- 5 Vermaculture Bins
- 6 Bee Hives
- 7 Chicken Coops
- 8 Hoop House
- 9 Composting Area & Work Space
- 10 Rabbit Pens
- 11 Goat Shed
- 12 The Market - food truck/carts & vegetable wagons
- 13 Staff Housing & Rooftop Garden
- 14 Storefront Bakery & Culinary Training
- 15 Micro-Business Pop-ups



The Team: