



Community School for Creative Education

The Country's *first* Intercultural Urban Public Waldorf School



Annual Report | 2022

Mission



The Community School for Creative Education partners with families and communities to provide a rigorous college-preparatory program integrated into a culturally rich, arts-infused, highly personalized curriculum inspired by Waldorf education for the diverse students of Oakland, to promote equity and prepare culturally competent, well-rounded, lifelong learners to lead, contribute to, and successfully participate in our rapidly changing multicultural society.

Motto

*Receive the children in
reverence, educate them in love,
let them go forth in freedom.*

Đón Nhận Đứa Trẻ Với Sự Trân Quý, Giáo
Dục Đứa Trẻ Trong Tình Yêu Thương,
Để Đứa Trẻ Bước Đi Trong Tự Do

以尊敬的心接納孩子
以愛心教育孩子
以自由自在的態度讓他們翱翔

Vision

The Community School for Creative Education envisions a future in which all children have access to quality education; all children experience success in community and career; and youth voices contribute in valued and meaningful ways to the success of a thriving, equitable, and multicultural society.



Table of Contents

CSCE Mission Vision	2	Awards & Recognitions	15
Letter from Dr. Ida Oberman, Executive Director & Founder	4	Our Impact	16
Dr. Oberman's Journey	5	Who We Are	18
What Makes Us Unique	6	Our Results	19
CSCE Origin Story	9	Ways to Give	20
Milestones	10	2021-2022 Financial Report	21
Strategic Priorities & Initiatives	11	A Heartfelt Thank You	22
Community Spotlights & Stories	12	Honoring Key Guides on our Path	23
• Alumni in High School: Andre Torres		Letter from Mr. Philip Gedeon, Head of School	24
• Alumni in College: Gregory Pang			
• Founding Parent: Cheryl Turk			
• Community Leaders: Nick Driver, Emma Paulino, & Christof Wiechert			



Dr. Ida Oberman | Executive Director & Founder



**Receive the Child in
Reverence.**

Educate the Child in Love.

**Let the child go forth in
freedom.**

- Rudolf Steiner

Dear Friends of Community School for Creative Education,

It is with great joy that we bring to you this, our 2022 Annual Report! We give this offering in recognition of the many heads, hearts, and hands that have gone into visioning, building and guiding our school. We celebrate the many languages, cultures, and generations on whose shoulders we stand. We lift up all who have gathered around this shared goal of an intercultural public Waldorf school, where we return to our founder's original intent. In 1919, in the southern German town of Stuttgart, the first Waldorf school was created to serve the children of factory workers at the Waldorf-Astoria Cigarette Factory. We return to these roots to harness Waldorf education today to continue to serve those who are marginalized; and to advance justice for all.

We dedicate this publication to our amazing teachers, staff, board, and all who have served our children over the first 15 years of our school's history. We thank Alameda County Board of Education for trusting us to give us approval and then stewarding us these long years. We acknowledge our community partners, our funders, our families, and at the center, our children; those who have been with us, those who are with us now, and those who will be with us in years to come. We are grateful for so many who have sown seeds into our fertile soil; locally, regionally, nationally and globally. We offer a special candle lit for those who have passed on since we began this work.

Few are better equipped than my successor, Mr. Phillip Gedeon, to lead this ship into to its next port of living waters. I am personally and deeply thankful that turns of life brought Mr. Gedeon to our doors when we so needed the expertise of head, heart, and hand that Mr. Gedeon brings with abundance, passion, and unflinching dedication to our children and to the San Antonio community.

We know our story has just begun. Thank you for being an important part of our community. Mr. Gedeon is waiting with open arms for your support, and he invites you to continue to partner with us as we navigate the next 15 years in the life of Community School for Creative Education.

Dr. Ida Oberman

Dr. Oberman | The Head, Heart & Hand of CSCE



Dutch-born, Dr. Oberman moved to Germany when she was 9 years old. As she spoke only Dutch, her parents enrolled her in a Waldorf school, which was more tolerant of non-native German speakers. She thanks the Waldorf school, her class teacher, and the Waldorf community for a safe, creative space (part Jewish, she'd grown up with fear of Germans as "Nazis") to complete school with strong arts, academics, and powerful relationships.

At 27, she attended the Stuttgart Waldorf Teacher Training, and then moved to New York City to work with others building intercultural Waldorf schools. After 10 years teaching, she completed her PhD at Stanford University and began the work to create a school. That school became the Community School for Creative Education in Oakland, with guidance from Faith in Action East Bay's organizer, Ms. Emma Paulino. Together with families, community leaders and educators, we grew.

Community School now proudly situated on International Boulevard in the heart of Oakland's San Antonio was founded by and with families and is the country's first urban intercultural Waldorf school.



Dr. Oberman & Ms. Hanna Lindenberg, her class teacher from 3rd - 8th grade (1916-2005)



Dr. Oberman in her home town of Tübingen. Just out of Stuttgart Waldorf teacher training and off to New York, USA, to teach.



First Graders with Dr. Oberman in the first year of CSCE's launch



When I met Dr. Oberman and her team, which included many in the Oakland community who were looking for a better school for their kids, I was truly captivated by her mission and vision to have the first Waldorf school in Oakland. **Dr. Oberman is a visionary leader.**

Nick Driver



Thanks for making a hard dream a reality!

Emma Paulino



I have always been very impressed at Dr. Oberman's **dedication and leadership**. The grassroots energy of the institution makes you want to do as much as you can.

Cheryl Turk



Thank you for staying with this dream to **make it happen**.

Dolores Nice-Siegenthaler





Deep Ties to the Local Community

Neighborhood business owners send us their children. Partnerships with community organizations have brought art installations to our walls and trees to our sidewalks. To meet the diverse needs of our parents, we hold community meetings in English, Spanish, Cantonese, and Vietnamese. The school also hosts a monthly mobile food pantry, staffed by middle school volunteers.

A Commitment to Diversity

We choose to locate in Oakland, CA, one of the most diverse cities in the nation. We strongly advocated for our school location, in the heart of the diverse San Antonio district. In an era when public education is becoming increasingly segregated, CSCE is proud to be *one of the most diverse schools in the state.*

Education for the Hands, Head, and Heart

Artistic expression and movement is a part of every classroom, every day. Mindfulness classes and on-site therapeutic services support intrapersonal development.

What makes our School Unique



What makes our **School Unique**



A Cutting-Edge Approach to Waldorf Education

As the country's first Urban Public Waldorf school, we are bringing Waldorf education back to its social justice roots; mirroring its early history of serving the children of inner-city Stuttgart, Germany with the highest quality education possible. We are continually evolving a rigorous curriculum which unifies Waldorf principles with the common core.

High Standards

We work to build intellectually engaged global citizens and see academic achievement as the product of children meeting their full potential. We set high standards for academic achievement and regularly measure our performance against other district schools. We prepare and support students to advance to academically competitive high schools and colleges.



We Are Open to All Students!

CSCE Stands United Against Racism

CSCE is a Sanctuary School and prides itself on creating a safe environment for our community. We will continue to offer support and guidance for the challenges students face so they can be prepared to contribute to a successful future for all.

Community School for Creative Education is a free public school that welcomes all students in Oakland and its surrounding communities regardless of race or ethnicity, color, ancestry, nationality, national origin, ethnic group identification, religion, physical or mental disability, sex, sexual orientation, gender, and gender identity or expression, or achievement level in administration of its admissions policies or education programs.

- No cost/tuition
- No admission requirements
- We offer Transitional Kindergarten to children who turn 5 between September 2, 2022 and February 2, 2023
- We have virtual school classroom tours every Tuesday from 9am to 9:30am and by appointment
In person tours by appointment.
- For more information on CSCE please contact: Gedeon Phillip, Head of School: **510-994-6309**

headofschool@communityschoolforcreativeeducation.org

CSCE Origin Story



March 2008
We went to every market and every community celebration to meet, hear people's dreams for their children and share of learning with head, heart, and hand.

Jan 2008
Our community collaboratively designed our Oakland Intercultural Public Waldorf School - a point of major pride for us!



May 2008
Waldorf educator Thanh Cherry came from Vietnam to help build powerful community relationships with Vietnamese & Cantonese speaking families in our San Antonio community.

Sept 2008
CSCE's Founding Board: Waldorf educators, urban leaders, parents, and community leaders.



Sept 2009
Community School for Creative Education's OUSD charter petition was submitted for a second time!



Dec 2009
CSCE team right after we were declined by OUSD. We didn't let it break our spirits. We kept strengthening our charter and organizing!



Milestones |

To learn more, please visit: www.communityschoolforcreativeeducation.org



2025 | Charter **renewal and creation of hub for educator development and support**. Build a strong, CTC approved, equity-focused intercultural public Waldorf teacher training and research program.

2024 | Lease renewal to **strengthen and deepen** work in neighborhood community.

2016 | Launch of **CSCE Mills Waldorf Professional Development Certificate Program** in global partnership with Alanus University Germany, & Friends of Waldorf Education Germany/Brazil.

2009 | San Antonio community of families, with Waldorf & urban educators, bring forward **first ever charter petition for intercultural public Waldorf community school in Oakland** and is **denied** by OUSD.

2008 | Emma Paulino, Velia Navarro, & Dr. Ida Oberman do one-on-ones with families to **gain insight for community interest** in building an Oakland intercultural public community Waldorf school. Zaretta Hammond & Dr. Oberman meet to do 'Think Tanks' on how to **advance equity for the San Antonio community**.

Looking

Ahead | Strengthen braid of Waldorf and EL Education and **extend statewide national and global presence** as model site for OUSD and other partners.

2020 | CSCE wins **2nd unanimous renewal approval** in light of CSCE outperforming surrounding schools and districts by having highest test scores for African American students.

2018 | CSCE Dragon Gala is **honored** by keynote speaker and Oakland Mayor Libby Schaaf with Assistant Chief of Police Paul Figueroa.

2012 | CSCE community of families **win facility in heart of San Antonio** allowing the school to move to its community of mission and origin.

2010 | Over 130 multilingual and multicultural families seek approval for CSCE and **win unanimous approval from Alameda County Board of Education**.



**Community School
for Creative Education**

Strategic Partnerships & Initiatives



Faith in Action East Bay | Formerly OCO, a 50-year old federation of multi-cultural constituencies serving the SF Bay Area.



Mills College Mills has partnered with CSCE since 2015 to offer Mills Waldorf Professional Development Certificate Program.



Families in Action for Quality Education (FIA)
FIA works to organize and channel the power of students and families in Oakland to fight for access to quality schools.



Attitudinal Healing Connection, Inc. | AHC
Oakland empowers individuals to be self-aware and inspired through art, creativity, and education.



Alliance for Public Waldorf Education | CSCE is founding member of Alliance which represents nearly 60 member schools in over 14 states.

Friends of Waldorf Education / Emergency Waldorf Pedagogy
Organized first US crisis intervention at Campfire Chico in 2018 under guidance of Karlsruhe Germany Headquarters with local/international team.



Local to Global Powerful Waldorf Communities

The Alliance for Public Waldorf Education | Zenzeleni Centre for Creative Education (South Africa) | Pedagogical Section of the Goetheanum (Dornach) International Network for Academic Steiner Teacher Education | Emergency Pedagogy Without Border (Brazil) | Association of Waldorf Schools of North America | Waldorf Early Childhood Association of North America | International Network for Academic Steiner Teacher Education

Other Key Partners

Alameda County Food Bank | Alanus University (Germany) | Alder Graduate School of Education | ALMA Partners | ARISE Charter High School | Calculus Roundtable | City of Oakland Head Start | Instruction Partners | Israelite Missionary Baptist Church | Lao Family Community Development Center | Lighthouse Charter School | Moss Farm | Oakland Burmese Baptist Church | Saint Anthony's Church | San Antonio Neighborhood Coalition | Seneca Family of Agencies | Vietnamese American Community Center

Spotlights | Local & Global Community



Emma Paulino

*Director of Organizing & Leadership Formation
Faith in Action East Bay
Oakland, CA*



Emma has led the launch and development of the CSCE Local Organizing Committee only to advance the work of the school initiative through leadership development of its community members. Emma Paulino has been a full-time organizer with FIAEB for over 25 years. "This is a community school, not a closed door school; our families can bring what happens at home to school. All these things affect the child and you need to see the whole child," Emma reflected. "I am really proud of this school... It was the power of the community that has built this school."

Nick Driver

*CSCE Advisory Board
Oakland, CA*



Nick has a local, county, and state presence that proved instrumental to our efforts in launching CSCE. He served as the Vice President of the California Charter Schools Association (CCSA). "I have been involved with CSCE since the first day that I met Dr. Oberman and she was looking for help from CCSA. I'm proud to have played a role in the founding of CSCE. I clearly remember the moment [the school] got approved, and still look back on that moment as one of the highlights of my time as the VP of the CCSA. It has now been 15 years, and the school is still going strong!"

Cheryl Turk

*Founding Parent
Oakland, CA*



Cheryl has been involved with CSCE over the past 12 years, since her son, Miles, was in 2nd grade. "Miles attended a different school during Kindergarten, but we had heard that there was a great school that focused on the arts, language, and helped create a well rounded student. We went to visit CSCE and immediately fell in love. My husband and I went and met with Dr. Oberman right away, looked at each other, and said, "I think we found the right home for our son. What excited us the most about CSCE was the idea that our child would be learning from a world perspective. The school really opens the doors to teach our kids about all cultures."

Christof Wiechert

*Head of Pedagogical Section
of the Goetheanum (emeritus)
Dornach, Switzerland*



"We have to renew and widen the capacity of Waldorf education - I call it 'new' education - you call it 'creative' education, which I find wonderful. What I saw at CSCE was students whose faces sparked with hope and light and joy, teachers on a journey of learning together that made a deep impression on me, and I saw this is really a community endeavor, engaging the whole community. This is the way we should work."

Spotlights | Alumni

Andrea Torres

Alumni High School



Andrea Torres is a proud alum of CSCE. She attended from first grade to 8th grade. Her favorite parts of being a student at CSCE include the diversity of the school, the memorable field trips, and the creativity that inspired students to learn and create something new each day. "It wasn't until I left CSCE that I realized that not everyone grows up learning about things like Hanukkah, Kwanzaa, or winter spirals, or Mandarin. For example, my 8th grade math teacher spoke English, Spanish, and Japanese! Looking back, I didn't really understand at the time how lucky I was to have been raised in such a cultured and diverse environment."

Gregory Pang

Alumni College



Gregory Pang graduated from CSCE in 5th grade and is now a freshman at St. Olaf College in Northfield, Minnesota. Gregory shared that the most memorable parts of being a student at CSCE included his participation in the first school basketball team, building lasting friendships, and feeling part of a true community. "The first memory I can think of is back in 5th grade. I was a part of the first basketball team ever. Although we didn't win as many games as we'd have liked, we enjoyed it. We had so much comradery. To me, my favorite thing about being a student at CSCE was the fun I had. It was the little things for me, but mostly the good people there."



Community Stories



CSCE fosters a lot of healthy communications, mentors, and friendships. **If you're looking for a tight-knit community of students and faculty who want to provide the best for you, CSCE is the perfect place.**

Gregory Pang

When investigating the pedagogical strategies used in Waldorf education, I **concluded that they can be used to address the educational deficits** that many African Americans face.

Dr. Clif Thompson

Another highlight was also getting **DENIED. The tenacity and resilience I saw to go back to the drawing board and try again was inspiring!**

Nick Driver

My **favorite things** about being a student at CSCE were constantly being in a **diverse environment**, learning about different cultures, and **all the friendships** I have made!

Andrea Torres

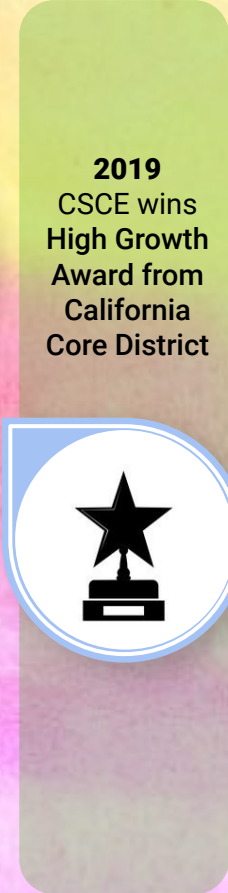
Whether it's learning Mandarin or Spanish, there is an emphasis on learning about other cultures. CSCE has consistently provided **a type of "global flower" in which students can understand the world one petal at a time - and that flower blooms!**

Cheryl Turk

Awards & Recognitions



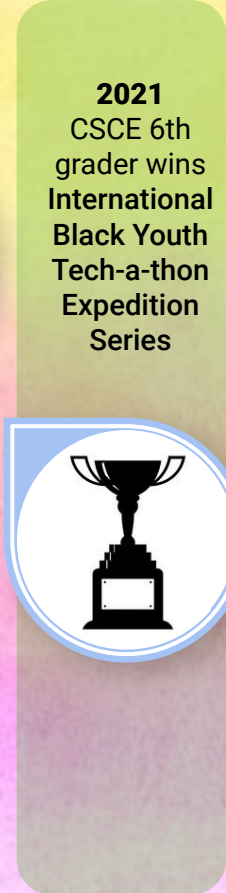
2019
CSCE parent
wins
**State-Wide
Hart Vision
Volunteer of
the Year
Award**



2019
CSCE wins
**High Growth
Award from
California
Core District**



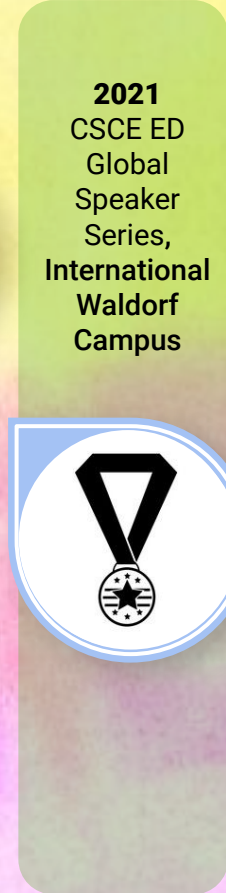
2020
CSCE in
Global News
as the Center
of Global
Emergency
Pedagogy



2021
CSCE 6th
grader wins
**International
Black Youth
Tech-a-thon
Expedition
Series**



2021
Globally Mills
Dr. Ida
Oberman
makes **top
billing as 2nd
speaker in
the global
series.**
Drawing from
her important
work Oakland



2021
CSCE ED
Global
Speaker
Series,
**International
Waldorf
Campus**



2022
CSCE Awarded
by California
Department of
Education
**\$1,187,500 Over
Five Years**



Community School for Creative Education

offers an arts-infused internationally recognized education of the whole child in a high poverty community where families would not otherwise have access to this form of education. CSCE serves families in a “ground zero” neighborhood for rapidly changing demographics. Some of these include communities of refugees from southeast Asia who have suffered trauma and African American families who do not have the resources to move away from “Prostitute Boulevard” (International Boulevard), the school’s location, as it is known, and so exposed to toxic stress. CSCE offers proof, point and model that education of the whole child can be adopted to a high poverty setting such as this and give children access to an education that is currently only offered in higher-wealth communities.

What is a Waldorf Education?

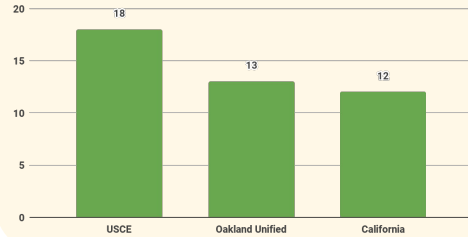
Waldorf education is a worldwide school movement developed in Europe nearly 100 years ago by Austrian philosopher, social reformer, and visionary, Rudolf Steiner. Today, Waldorf education is represented across the globe across ethnicity and class with over 1200 schools and nearly 2000 early childhood programs in over 60 countries. In Waldorf education, the learning process is seen as threefold, engaging head, heart and hand—or thinking, feeling, and doing. This is the basis out of which Waldorf educators work engage each child through a curriculum and methodology that integrates academics, arts, and practical skills to strengthen confidence, care, creativity and sense of purpose. Originally for the children of the workers of the Waldorf Astoria Cigarette Factory, Waldorf joins powerful commitment to inner growth to deep commitment to social justice in the world without.

“The need for imagination, a sense of truth and a feeling of responsibility – these are the very nerve of education” - Rudolf Steiner

Our Impact | Why Here, Why Now, Why Us?



Percent Students Who Received Special Education Services 2021-22

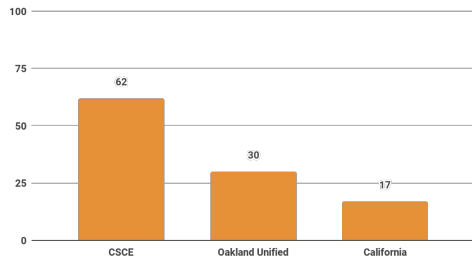


Who are we?
Serving among the highest % children who receive Special Education Services in the state.

CSCE students with special needs showed double the gains of their District peers for 6th year in a row!

Though CSCE serves more English Learners and students with Special Needs than OUSD and surrounding schools, our students outperformed others on the 2019 ELA State Tests!

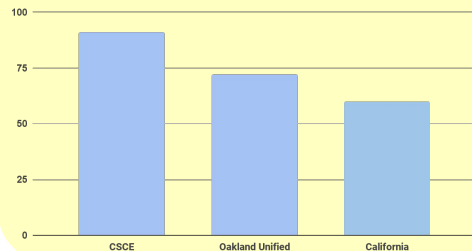
Percentage of English Learners 2021-22



Who are we?
Serving Among the Highest % English Learners In the State

In 2021-22, Non-English speaking newcomers to CSCE grew an average of 300 points in their mastery of English. CSCE English Language Learners showed double the gains of their District peers for 6th year in a row!

Percent Students in Poverty 2021-22



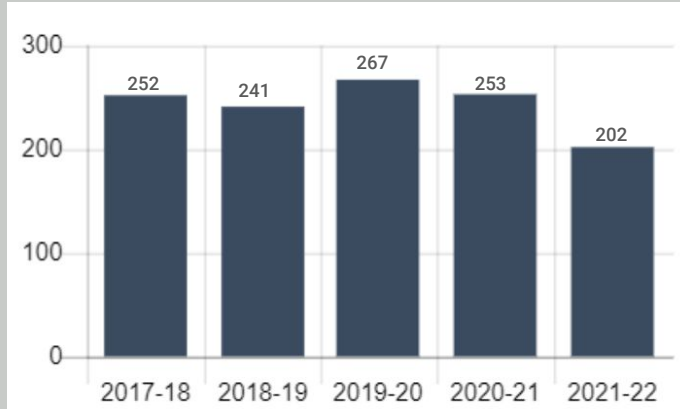
Who are we?
Serving among the highest % children in poverty in the state.

CSCE students are outperforming their peers in Math NWEA MAP Score with an average growth of 4%. CSCE students grades 3-8 are showing increased test scores in Reading. The lowest performing students are accelerating in their Reading as shown through Fountas & Pinnell testing. In addition, our CSCE 4th graders who started 88% below grade level in reading in fall reduced to 28% below grade level in winter!

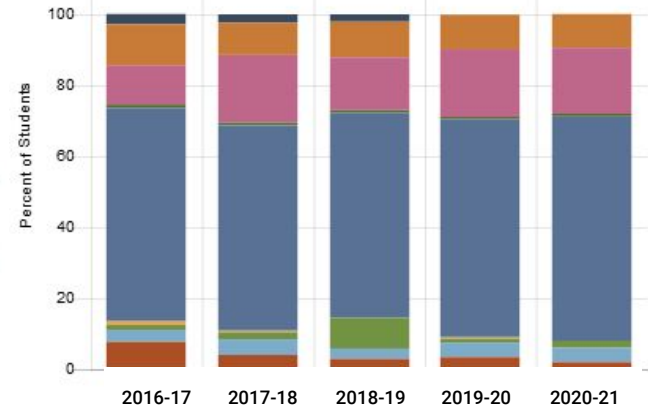
Who We Are | Sustained Growth & Diversity Over Time



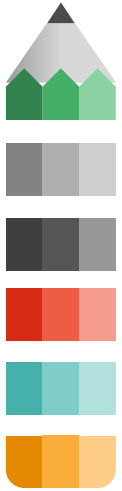
Number of Students Enrolled



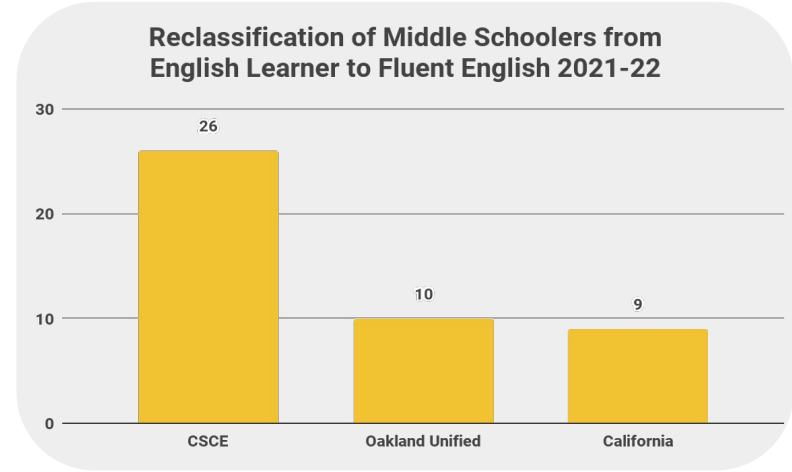
- Asian
- Black or African American
- Hispanic or Latino
- None Reported
- Two or More Races
- American Indian or Alaska Native
- Filipino
- Native Hawaiian or Pacific Islander
- White



Our Results | Student Outcome Data Wins



Though CSCE over past 10 years has served a higher percentage of “unduplicated” – i.e. most vulnerable – students than the State, District, and most surrounding schools, we are celebrating student outcome data wins that demonstrate our excellence!



On the 2022 ELA State Tests...

- CSCE Economically Disadvantaged African American and Hispanic students and students with IEPs outperform neighbor schools.
- In 2021-2022, CSCE English Learners outperformed the State and District by almost three times in the percent who redesignated from English Learner to English Fluent.



On 2019 ELA State Tests...

- CSCE African American Students showed highest test results across all of Oakland in ELA and Math;
- CSCE Latino Middle Schoolers were in the top third across all of Oakland in ELA and Math growth, winning the ‘high growth’ award;
- CSCE English Language Learners showed double the gains of their District peers for 6th year in a row;
- CSCE Students Identified Special Needs showed double the gains of the District for 6th year in a row.

Thank You To Our Donors

Although the Community School receives 83% of its funding from public sources, it relies on the generosity of donors like you to make up the other 17% required to deliver a culturally-rich, arts-infused, Waldorf-inspired, highly personalized curriculum to the children and families of Oakland. A special thank you goes out to:

- Donner Foundation
- Elina Tsao in honor of Anthony Costa & Shanya Tsao, Dudnick Detwiler Rivin & Stikker LLP
- Ford Foundation
- Irene S. Scully Family Foundation
- Kenneth Rainin Foundation
- NUMI Foundation
- Philanthropic Ventures Foundation
- Quest Foundation
- Rogers Family Foundation
- S. H. Cowell Foundation
- Sarah Alfadi, Esq., Chair & Founder KARAMAH, Muslim Women Lawyers for Human Rights
- Stuart Foundation
- The San Francisco Foundation
- The Wallace Foundation
- Walton Family Foundation

Thank you of all of our philanthropists, big and small! Your generous kindness truly helps transform the lives of Oakland students and their families.

For more information on ways to give, please contact Dr. Ida Oberman or visit our website: communityschoolforcreativeeducation.org.

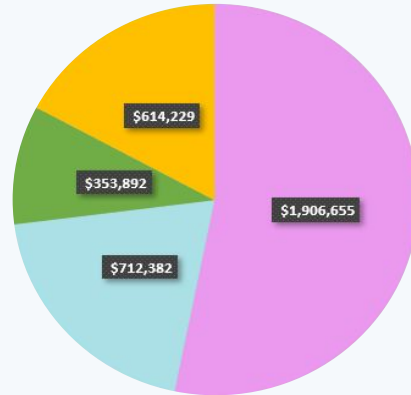


2021 - 2022 Financial Report



Revenues

- LCFF - \$1,906,655
- Federal Revenue - \$712,382
- Donated Revenue - \$614,229
- Other State Revenue - \$353,892

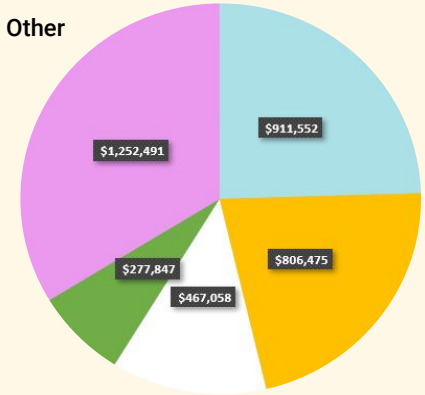


Total Revenue*
\$3,587,158



Expenses

- Services & Other Operating Expenses - \$1,252,491
- Certificated Salaries - \$911,552
- Classified Salaries - \$806,475
- Employee Benefits - \$467,058
- Books and Supplies - \$277,847



Total Expenses
\$3,715,433

*CSCE also received \$231,141 in one-time federal revenue that was not spent in FY21-22 and was therefore deferred to be recognized as revenue in FY22-23.

A Heartfelt Thank You



Board of Directors

Dr. Anastasia Prentiss, Chair | Adrienne Barnes, Vice Chair
Allegra Alessandri Pfeifer | Grace Pang | Lesbhia Morones
Rev. Dr. Kevin Ary | Sarah Tiffany Richardson-Baker
| Martha Candido

Advisory Board

Ahmed Rahim Numi *Organic Tea* | **Bernd Ruf** *Friends of Waldorf Education* | **Betty Ly** | **Chip Romer** *Woodland Star Charter School* |
Christof Wiechert *School of Spiritual Science, Goetheanum, Dornach, Switzerland* | **Dana Wellhausen** *Rogers Family Foundation* |
Jorge Ruiz de Velasco *Stanford Gardner Center* | **Jost Schieren,**
Alanus University |
Kent McGuire *Hewlett Foundation* |
Kokomon Clotney *Attitudinal Healing Connection of Oakland*
| **Linda Darling Hammond** *Stanford Center for Opportunity Policy in Education* | **Milbrey McLaughlin** *Stanford Graduate School of Education* | **Nick Driver** *Griffin Technology Academies* |
Peter Hanley *Bay Area Charter School Athletic Conference* |
Reinaldo Nascimento *Waldorf Emergency and Trauma Pedagogy*

Teachers and Staff for 22 - 23

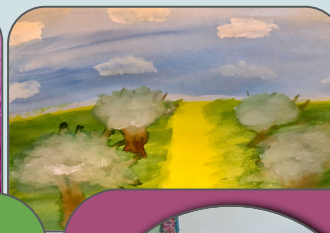
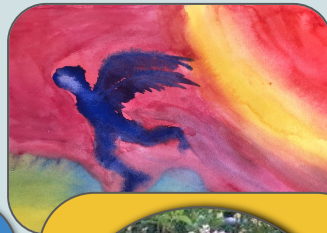
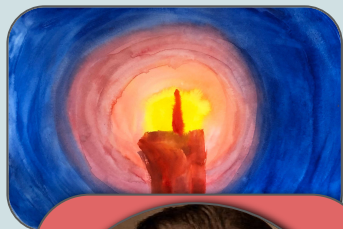
Alina Kagan, SPED Program Manager
Alison Keaney, 5th Grade Teacher
Amy Gaerlan, Multilingual Learners Intervention Specialist
Anastasia Prentiss, Supplemental Instructional Specialist
Anayaxy Barraza, Assistant Head of School
Aung Thant, Classroom Substitute Teacher
Benjamin Lawrence, Instructional Aide SPED
Carhenna Dela Cruz, Instructional Aide SPED
Catherine Collins, 3rd Grade Teacher
Curtis Lin, MS Math Teacher/8th Grade Advisor
Danee Black, Academic Programs Coordinator
Emily Clinton, SPED Teacher
Esther Pyon, ERMHS Clinician
Fiona Keaney, COVID Technology Coordinator
Fiona Salazar, Instructional Aide SPED
Gabriel Ben-Shalom, Instructional Aide
Haley Zanze, 4th Grade Teacher
Hanna Forde, TK/K Teacher
Hennessy Jimenez, Food Program Assistant
Dr. Ida Oberman, Executive Director
Jennifer Lee, 1st Grade Instructional Aide
Jessica Booker, Instructional Specialist
Kimberly Palmore, Director of Finance & Operations
Lottie Garrison, Operations & Compliance Manager
Malcolm Defils, Extended Day Site Coordinator
Molly Roa, Supplemental Instructional Specialist
Nhan Le, TK/K Instructional Aide
Phillip Gedeon, Head of School
Samantha Sherwood, Behavior Specialist
Troy Neal, Dean of Student Culture
Vincent Lane, Instructional Aide SPED
Yolanda Cordova, Office Manager
Zack Steele, Behavior Specialist



Thank you to our students and our community!

Without you, this beautiful school could not be a reality.

Honoring Key Guides on Our Path that Have Passed On



Dr. Rudolf Steiner
1861-1925



Angel Julio Balaoing
1961-2013



Mary Jane Dipiero
1944-2018



Abe Doctolero
1946-2021



Dirk Tillotson
1969-2021

In Profound Gratitude

In Closing | Mr. Philip Gedeon, Head of School



Aloha Community School for Creative Education Families and Partners,

I am truly honored to serve as your Head of School and the next leader of Community School for Creative Education. CSCE is has earned a reputation of excellence within and without the Waldorf community, and as a Community school, the boundless opportunities that extend beyond the classroom setting are exemplary.

I enthusiastically will continue to deepen the Waldorf ideals for education that emphasizes and awakens disciplined creativity, wonder, reverence and respect for nature and human existence for all of our students. I look forward to leading our staff in strengthening and expanding their Waldorf methods to offer a more holistic educational model designed to provide the right stimulus at the right time and allow each child's abilities to fully unfold.

I have witnessed personally the dedicated our staff embodies in meeting each child's academic, social and emotional needs. Our Board of Trustees and school leadership are committed to providing each school with the necessary resources to ensure success. And, parents and community members give to our schools generously in terms of their time, talent, and resources.

This time of transition is such an exciting time and opportunities for everyone to get involved. Please be sure to check out our website and social media accounts (Facebook and Instagram) to stay current on school events, meetings and community opportunities. I look forward to working with everyone in our community to continue propelling CSCE forward!

Mr. Philip Gedeon

“The heart of the Waldorf method is that education is an art; it must speak to the child's experience. To **educate the whole child, his heart and his will must be reached, as well as the mind.**”

- Rudolf Steiner

SCHOOL VERSE

*Cited by **Cecil Hardwood**, Co-Founder of the first Waldorf schools in an English speaking country (1898-1975)*



This is our school

Let **peace** dwell here.

Let the room be filled with

contentment.

Let **Love** abide here:

Love of one another

Love of humankind

Love of the earth

And love of life itself.

Let us remember:

As **many hands** build a house,

So, **many hearts** make a school.

Esta es nuestra escuela

Que **la paz** habite aquí

Que el salón de clase se llene de **satisfacción.**

Dejemos que **el amor** permanezca aquí:

Amor de unos a otros

Amor a la humanidad

Amor a la tierra

Amor a la vida.

Recordemos: Como **tantas manos** construyen una casa,

Así mismo, **muchos corazones** hacer una escuela.

Đây là trường học của chúng ta

Hãy sống hòa bình ở đây.

Hãy để căn phòng tràn đầy mãn nguyện.

Hãy để tình yêu tồn tại ở đây:

Tình yêu của nhau

Tình yêu của nhân loại

Tình yêu của trái đất

Và tình yêu của đời mình.

Chúng ta hãy nhớ:

Như nhiều bàn tay xây dựng một ngôi nhà,

Vì vậy, nhiều trái tim tạo thành một trường học.



**Community School
for Creative Education**