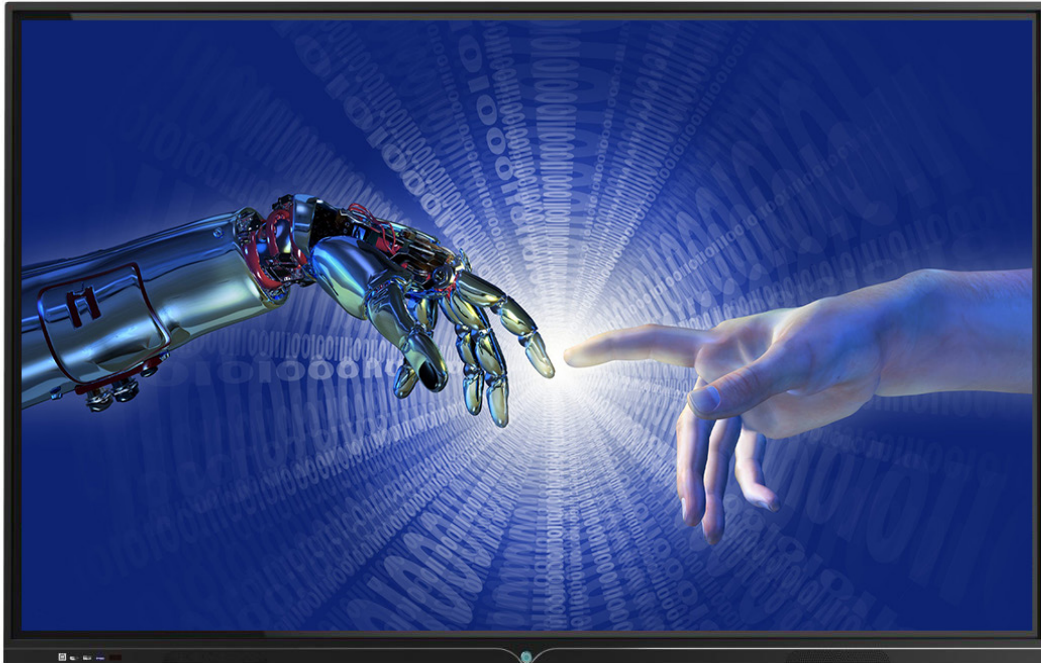


# Silex Touch-Clarity ID86

86" Interactive Display



## Main Features

- 4mm tempered chock-proof glass
- Enhanced visual effect and improved touch experience
- High-speed 20-point touch for smooth and fast writing experience
- Optional standard OPS slot, integrated plug-in design with easy upgrade and maintenance
- Easily accessible front ports: 1 PC-USB, 1 full channel-USB, 1 HDMI input, 1 TOUCH-USB
- Front speakers
- Front button one key start for simple and convenient operation
- Android 11.0 OS, with practical whiteboard and annotation software features

# Specifications

## Display:

- Screen size: 86inch
- Backlight: DLED straight-down
- Display type: 2D
- Pitch: 0.372 x 0.372mm
- Display area: 1892.16\*1064.22mm
- Ratio: 16:9
- Resolution: 3840 x 2160 UHD / 4K
- Brightness: 350-380cd/m<sup>2</sup>
- Contrast: 1400:1(Typ.)
- Color: 8 bit/16.7 Million
- Viewing angle: 178°,178°
- Refresh rate: 60Hz
- Response time: 8ms
- Speaker power: 8Ω10W x2

## Touch:

- Touch type: IR
- Touch points: 20 points
- Touch embedding: Side-Embedded
- Touch drive mode: HID drive-free
- Writing surface materials: 4mm tempered glass
- Sensing method: Finger or other non-transparent touch sensitive media
- Resolution: 4096X4096
- Touch system communication port: USB 2.0
- Function & calibration: automatic software detection
- Response time: <8ms
- Touch frequency: No limits
- Scanning speed: 100Hz/second
- Cursor speed: 125P/S
- Touch accuracy: ≤2mm
- Installation & maintenance: Rear/ side-mounted maintenance type
- Operating systems: XP/Win7/ Win10/ LINUX/ Android

## Mainboard configuration:

- System: Android 11.0
- Configuration: 4G DDR, 32G Storage
- Processor: Quad Core ARM Cortex-A55
- Input interface: RJ45,Touch usb,RS232,YPBPR IN,AV IN,VGA IN,VGA AUDIO IN,1\*HDMI in,USB2.0,RF-IN,SD card,MIC IN
- Output interface: SPDIF OUT; EARPHONE; AV OUT
- Audio: MPEG1/2 layer I/II,AAC-Lc,WMA...
- Video: MPEG-2/4,AVS,H.264,H.265,TS, realmedia...
- Image: Support JPG, BMP, PNG and other image format browsing and support rotation/slide show/picture zoom function
- Optional OPS module

## Power:

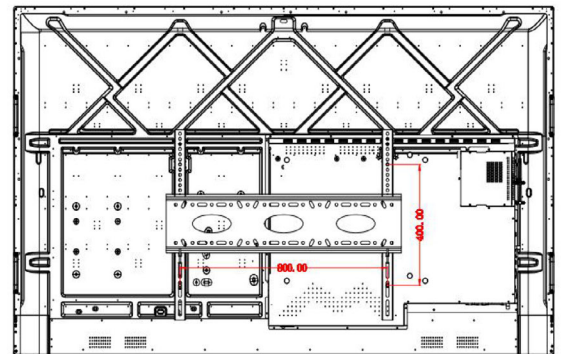
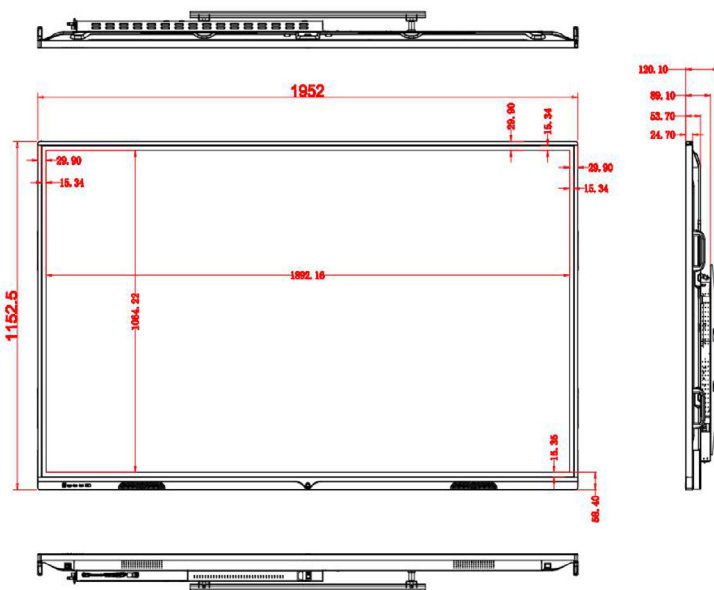
- Working voltage: 110~240V/50~60Hz  
Power switch/position: Yes/Back side
- Consumption: about 330W  
Power Supply Type/Mode: 2 round pin Euro style
- Standby power consumption: ≤0.5W /  
Power interface: 2 round pin Euro style

### Other Specifications:

- Product size:1952\*1152.5\*89.1mm
- Size including bracket:  
1952\*1152.5\*120.1mm
- Distance between holes: 800\*400mm
- Wall mounting dimensions:  
1972\*1172.5\*120.1mm  
Installation principles: widening 20mm on two sides
- Package size:2092\*215\*1319mm  
Package: carton box
- Net Weight/ Gross Weight: 65.8Kg/83Kg  
Net weight (product weight) Gross weight (including accessories and package)
- Installation: Wall mounting (standard)
- Front interface: HDMI IN, touch USB, USB 1 (PC USB), USB 2 (full channel shared USB)
- Storage environment: Storage temperature: -20°C~60°C ;Storage humidity: 10%RH~90%RH
- Working environment: Working temperature: -10°C~55°C; Working humidity: 10%RH~90%RH
- Life span: ≥50000hrs

### Accessories:

- Wall mount bracket, expansion screw, touch pen, warranty card, remote control





© 2022 SillexPro. All rights reserved. SillexPro and any SillexPro product or service name or logo used herein are trademarks of SillexPro. All other trademarks used herein belong to their respective owners. The trademarks and logos displayed herein may not be used without the prior written consent of SillexPro or their respective owners. No portion hereof may be reproduced or transmitted in any form or by any means, for any purpose other than the recipient's personal use, without the express written permission of SillexPro.

[www.Sillexpro.com](http://www.Sillexpro.com)