

1 LX OH PLOT  
Scale: 1/4" = 1'-0"

- ETC CSource4 10deg @ 575w 2
- Source 4 19 @ 575w 8
- Source 4 26 @ 575w 33
- Source 4 36 @ 575w 47
- Source 4 50 @ 575w 17
- Source 4 LED 19 @ 167w 2
- Source 4 LED 26 @ 167w 4
- Source 4 LED 50 @ 167w 2
- S4 PAR MFL @ 750w 10
- Chauvet COLORado 1 Tour @ 93w 12
- ETC D60 Lustr Med Round @ 161w 18
- Altman SS-Cyc 100 @ 100w 12
- Light Instr Elation DLED Tri-Strip (3ch mode) @ 233w 14
- ADJ Inno Pocket Z4 @ 67w 7
- ETC High End Lonestar @ 615 w 12
- Vari-lite VL770 Spot @ 700w 4
- Vari-lite 1100 TS @ 1kw 3

Typical



# Peter and the Starcatcher

UCF MAINSTAGE  
LX: OVERHEAD  
& FOH  
REVISIONS

B	FINAL	11.19.2023
A	PRELIMINARY	11.7.2023

DIRECTION David Lee  
SCENIC DESIGN Tim Brown  
LIGHTING DESIGN Ally Reichard  
ASST. LIGHTING Emily Duncanson  
DESIGN ADVISOR Rob Siler

SCALE: 1/4" = 1'-0" DRAWN: 11.7.2023

	ETC CESource4 10deg @ 575w	2
	Source 4 19 @ 575w	8
	Source 4 26 @ 575w	33
	Source 4 36 @ 575w	47
	Source 4 50 @ 575w	17
	Source 4 LED 19 @ 167w	2
	Source 4 LED 26 @ 167w	4
	Source 4 LED 50 @ 167w	2
	S4 PAR MFL @ 750w	10
	Chauvet COLORado 1 Tour @ 93w	12
	ETC D60 Lustr Med Round @ 161w	18
	Altman SS-Cyc 100 @ 100w	12
	Light Instr Elation DLED Tri-Strip (3ch mode) @ 233w	14
	ADJ Inno Pocket Z4 @ 67w	7
	ETC High End Lonestar @ 615 w	12
	Vari-lite VL770 Spot @ 700w	4
	Vari-lite 1100 TS @ 1kw	3

Typical



# Peter and the Starcatcher

UCF MAINSTAGE

LX: DECK

## REVISIONS

B	FINAL	11.19.2023
A	PRELIMINARY	11.7.2023

DIRECTION David Lee  
 SCENIC DESIGN Tim Brown  
 LIGHTING DESIGN Ally Reichard  
 ASST. LIGHTING Emily Duncanson  
 DESIGN ADVISOR Rob Siler

SCALE: 1/4" = 1'-0"  
 DRAWN: 11.7.2023

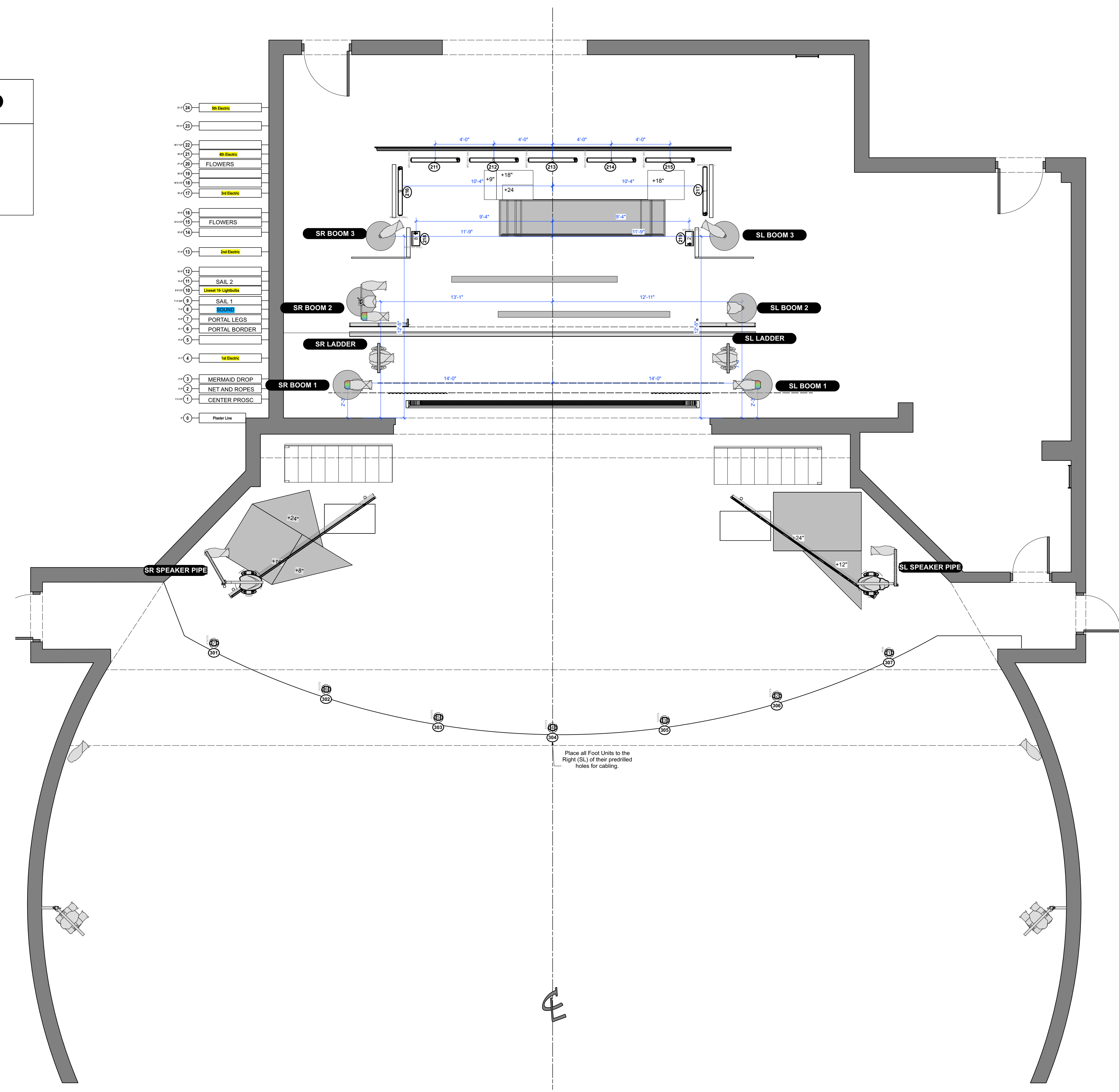
PLATE **2** OF 4

**PLACEMENT TBD**

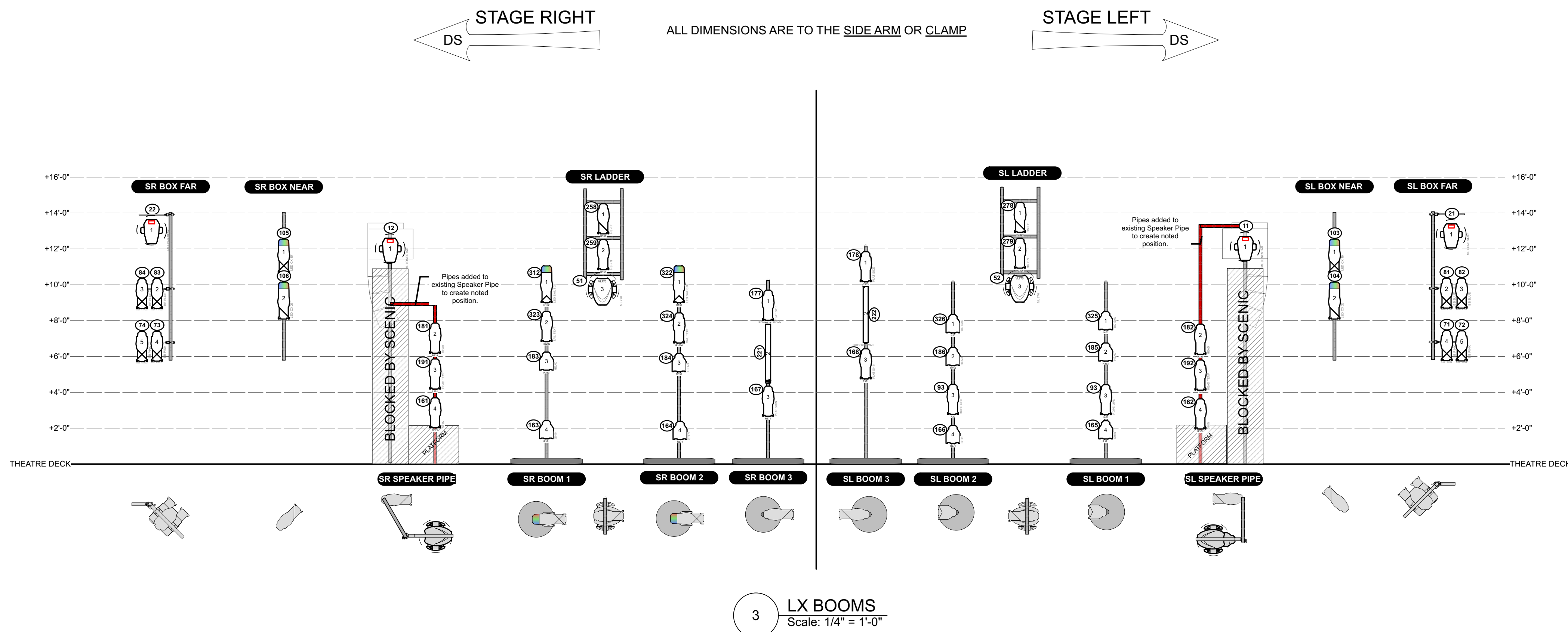
Lanterns to be hung on hooks in space, discuss after scenic install and paint.

Hurricane Haze

DP-50 Hazer

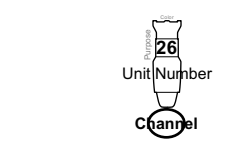


2 LX DECK  
 Scale: 1/4" = 1'-0"



	ETC CESource4 10deg @ 575w	2
	Source 4 19 @ 575w	8
	Source 4 26 @ 575w	33
	Source 4 36 @ 575w	47
	Source 4 50 @ 575w	17
	Source 4 LED 19 @ 167w	2
	Source 4 LED 26 @ 167w	4
	Source 4 LED 50 @ 167w	2
	S4 PAR MFL @ 750w	10
	Chauvet COLORadio 1 Tour @ 93w	12
	ETC D60 Lustr Med Round @ 161w	18
	Altman SS-Cyc 100 @ 100w	12
	Light Instr Elation DLED Tri-Strip (3ch mode) @ 233w	14
	ADJ Inno Pocket Z4 @ 67w	7
	ETC High End Lonestar @ 615 w	12
	Vari-lite VL770 Spot @ 700w	4
	Vari-lite 1100 TS @ 1kw	3

Typical



# Peter and the Starcatcher

UCF MAINSTAGE

LX: BOOMS

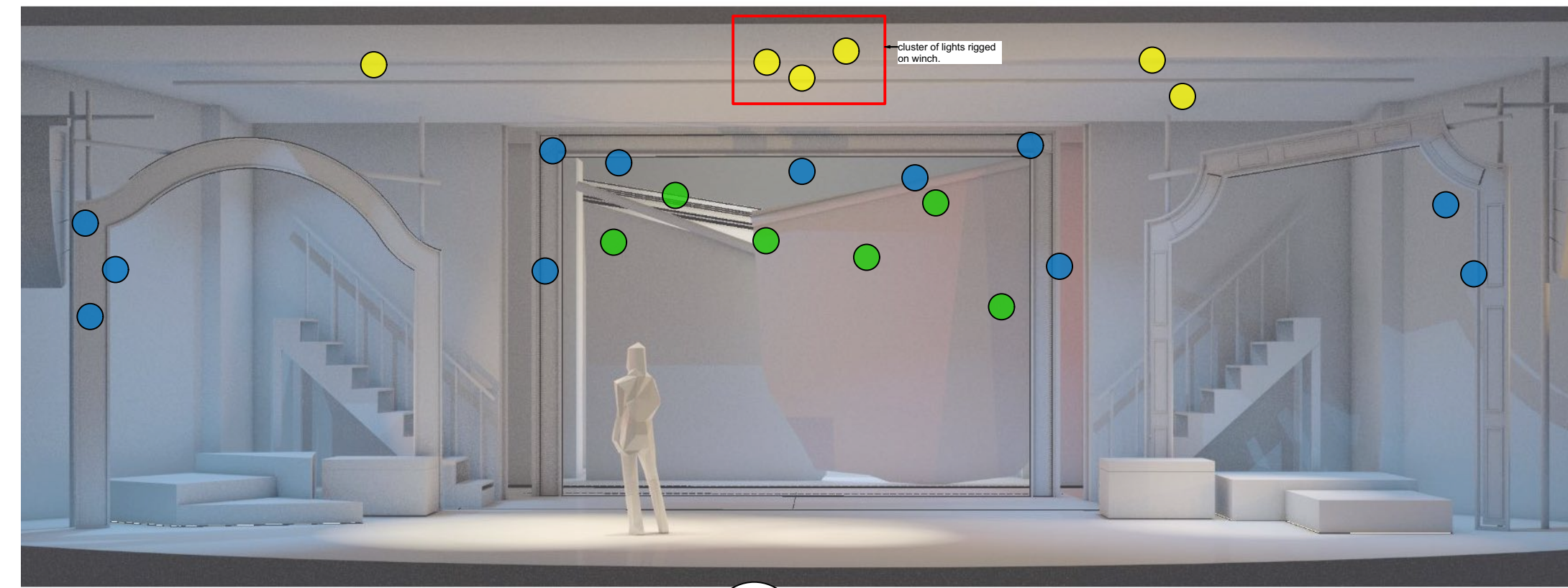
## REVISIONS

B	FINAL	11.19.2023
A	PRELIMINARY	11.7.2023

DIRECTION	David Lee
SCENIC DESIGN	Tim Brown
LIGHTING DESIGN	Ally Reichard
ASST. LIGHTING	Emily Duncanson
DESIGN ADVISOR	Rob Siler

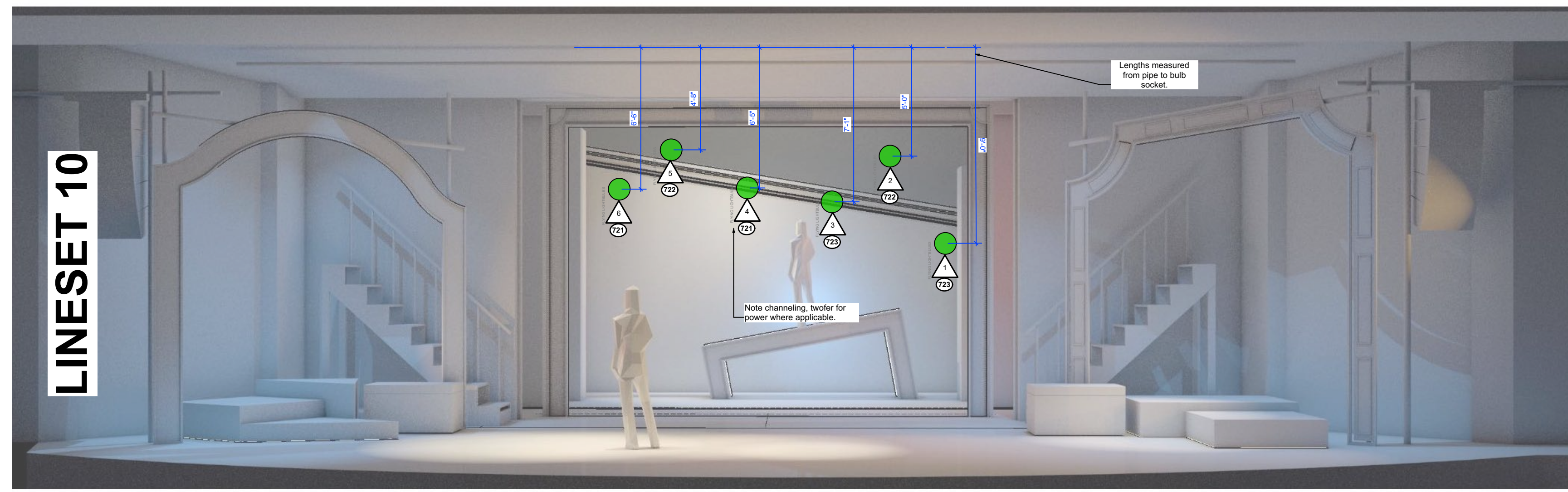
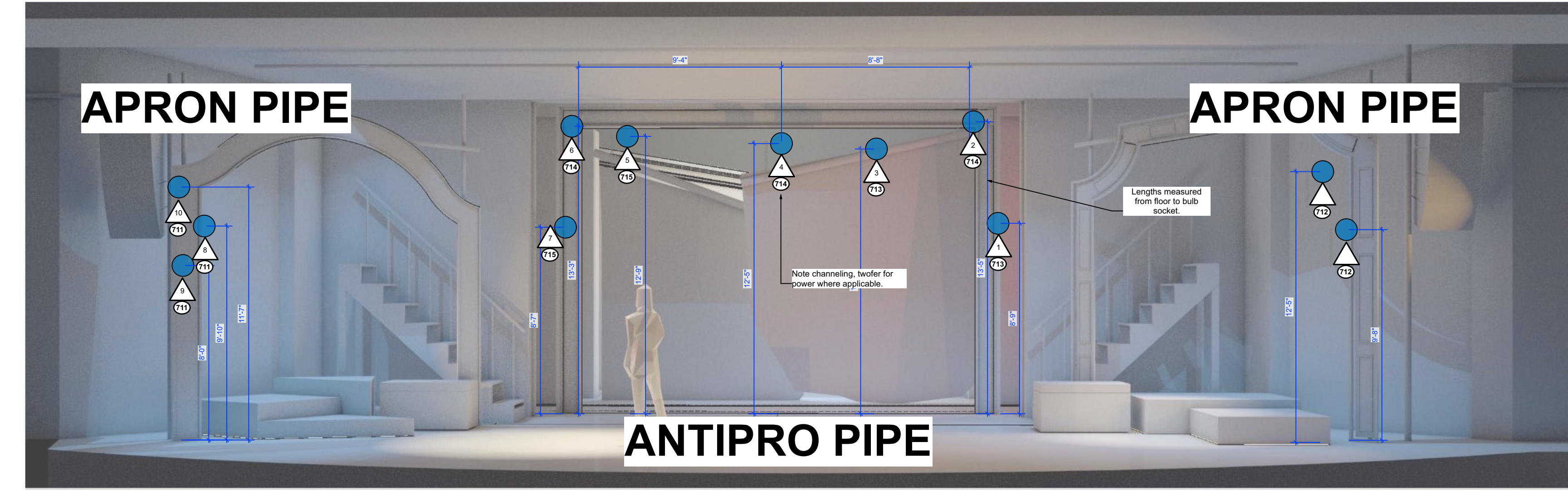
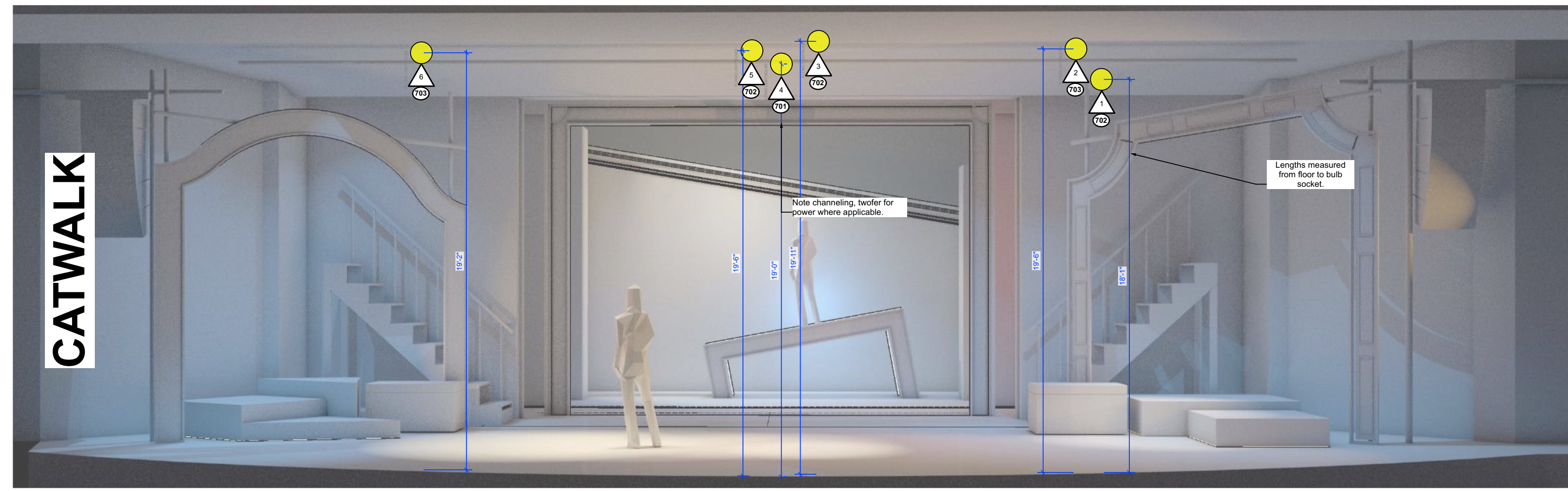
SCALE: 1/4" = 1'-0"      DRAWN: 11.7.2023

ALL BULBS BY POSITION



4.5 LX LIGHTBULB OVERLAY  
Scale: 3/16" = 1'-0"

	ETC CESource4 10deg @ 575w	2
	Source 4 19 @ 575w	8
	Source 4 26 @ 575w	33
	Source 4 36 @ 575w	47
	Source 4 50 @ 575w	17
	Source 4 LED 19 @ 167w	2
	Source 4 LED 26 @ 167w	4
	Source 4 LED 50 @ 167w	2
	S4 PAR MFL @ 750w	10
	Chauvet COLOrado 1 Tour @ 93w	12
	ETC D60 Lustr Med Round @ 161w	18
	Altman SS-Cyc 100 @ 100w	12
	Light Instr Elation DLED Tri-Strip (3ch mode) @ 233w	14
	ADJ Inno Pocket Z4 @ 67w	7
	ETC High End Lonestar @ 615 w	12
	Vari-lite VL770 Spot @ 700w	4
	Vari-lite 1100 TS @ 1kw	3



4 LX LIGHTBULB PLACEMENT  
Scale: 1/4" = 1'-0"

Typical



**Peter and the Starcatcher**

UCF MAINSTAGE

LX: PRACTICAL LIGHTBULBS

REVISIONS

B	FINAL	11.19.2023
A	PRELIMINARY	11.7.2023

DIRECTION	David Lee
SCENIC DESIGN	Tim Brown
LIGHTING DESIGN	Ally Reichard
ASST. LIGHTING	Emily Duncanson
DESIGN ADVISOR	Rob Siler

SCALE: 1/4" = 1'-0"      DRAWN: 11.7.2023