

Matthew 2:1 – 12

The wise men followed the star to Bethlehem where Jesus was born. Help the wise men travel together to Bethlehem.





The Three Wise Men Following the Star

Wise Men Word Search

Find the words on the list that are hidden in the puzzle. The words can be right to left, up and down or diagonally.

M Y R R H R B Z U N N T P A J
W R U H G G C E S T A R A Q E
R Z A C Z Q O G T E E W X X S
J P G Y W K Z X L H I W E H U
H M H O R W I L T O L E T J S
G O L D D S C N C R Z E W E M
B L N J S T T J G S K T H B K
X E F C H A B I E H Q R B E N
C H E R O D B T E I J A R S M
C O R Q P W R G J P E V E X Y
T A T F R A N K I N C E N S E
W O R S H I P B D E O L Y B B
I U G P O U H I L P Y U J C A
S R R Q S A I U I A M B M Z S
E S D R C G I F T S E Z P A Q

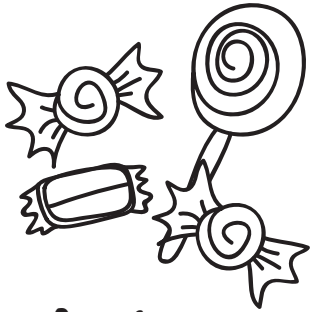
BETHLEHEM
FRANKINCENSE
GIFTS
GOLD

HEROD
KING
JESUS
MYRRH

STAR
TRAVEL
WISE
WORSHIP

Three Gifts

Circle three gifts the wise men brought to Jesus when he was born

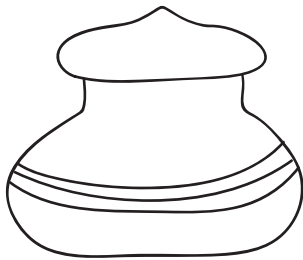


Candy

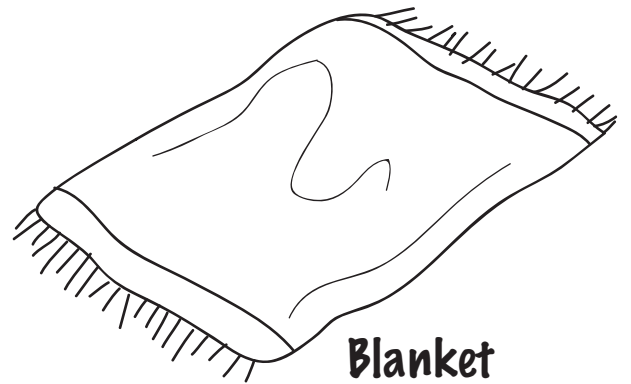
Gold



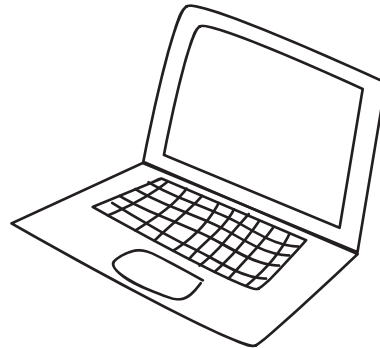
Soup



Myrrh



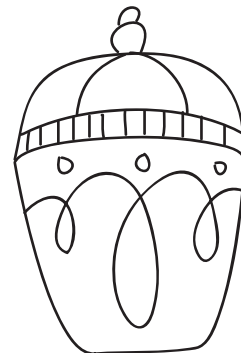
Blanket



Laptop



Shoes



Frankincense

Wise Men – Find the Difference

Compare the two pictures of the wise men visiting Jesus and circle the differences.



The Wise Men's Story

Secret Code



Each number stands for a letter of the alphabet. Write the correct letter in the blank to find the coded words and phrase.

Code key

A 1	J 10	S 19
B 2	K 11	T 20
C 3	L 12	U 21
D 4	M 13	V 22
E 5	N 14	W 23
F 6	O 15	X 24
G 7	P 16	Y 25
H 8	Q 17	Z 26
I 9	R 18	

5 1 19 20

7 9 6 20 19

8 5 18 15 4

13 1 18 25

2 5 20 8 12 5 8 5 13

What did the wise men follow to find Jesus?

1 19 20 1 18