

# Flying Dutchwoman Table Runner



JuJu Bees Retreats

a JuJu Bees Retreats pattern!

# Flying Dutchwoman Table Runner

## Welcome!

Thank you for choosing a JuJu Bees Retreats pattern! This *Flying Dutchwoman Table Runner* is packed with movement, color, and classic Flying Geese charm—brought to life with the accuracy and ease of the **AccuQuilt 8" Mix & Match Cube**. Whether you're sewing for your home or making a special gift, this runner delivers a bold, polished look with stress-free construction.

## About This Pattern.

This design is all about joyful piecing and letting your fabrics shine. With guided AccuQuilt cutting, smooth chain piecing, and on-point block assembly, you'll enjoy a fast, fun project that looks beautifully intricate when finished.

At JuJu Bees Retreats, our goal is simple: help you quilt confidently, creatively, and with a whole lot of happy energy. This pattern keeps things beginner-friendly while still offering the satisfaction and sparkle that all quilters love.



## What You'll Create.

A vibrant, eye-catching table runner that makes any space feel special. Once quilted and bound, it becomes a stunning seasonal accent, everyday centerpiece, or heartfelt handmade treasure.

## Let's Get Sewing!

Grab your favorite prints, your GO! Cutter, and your quilting enthusiasm—this is going to be fun. You've got this... and I'm cheering you on every stitch of the way!

Happy Sewing!  
Your **GO!** Guru, Julie!



# What I used

- ❑ 8 different squares that measure 5  $\frac{3}{4}$ "
- ❑  $\frac{1}{3}$  yd background fabric
- ❑  $\frac{1}{2}$  yd for setting triangles
- ❑  $\frac{1}{3}$  yd binding, 4 strips
- ❑ 18" x 54" for backing or 1  $\frac{1}{8}$  yard, leftover could be used for binding.
- ❑ 15" x 50" batting
- ❑ Thread to match background



## AccuQuilt 8" Mix and Match Qube

- ❑ Shape 4 (QST) #55711
- ❑ Shape 5 (HST) #55712
- ❑ 8" setting triangles #55551
- ❑ 2  $\frac{1}{2}$ " strip die #55017 or #55014
- ❑ Cutting mats for dies: 6" x 6", 10" x 24", 6" x 24"

---

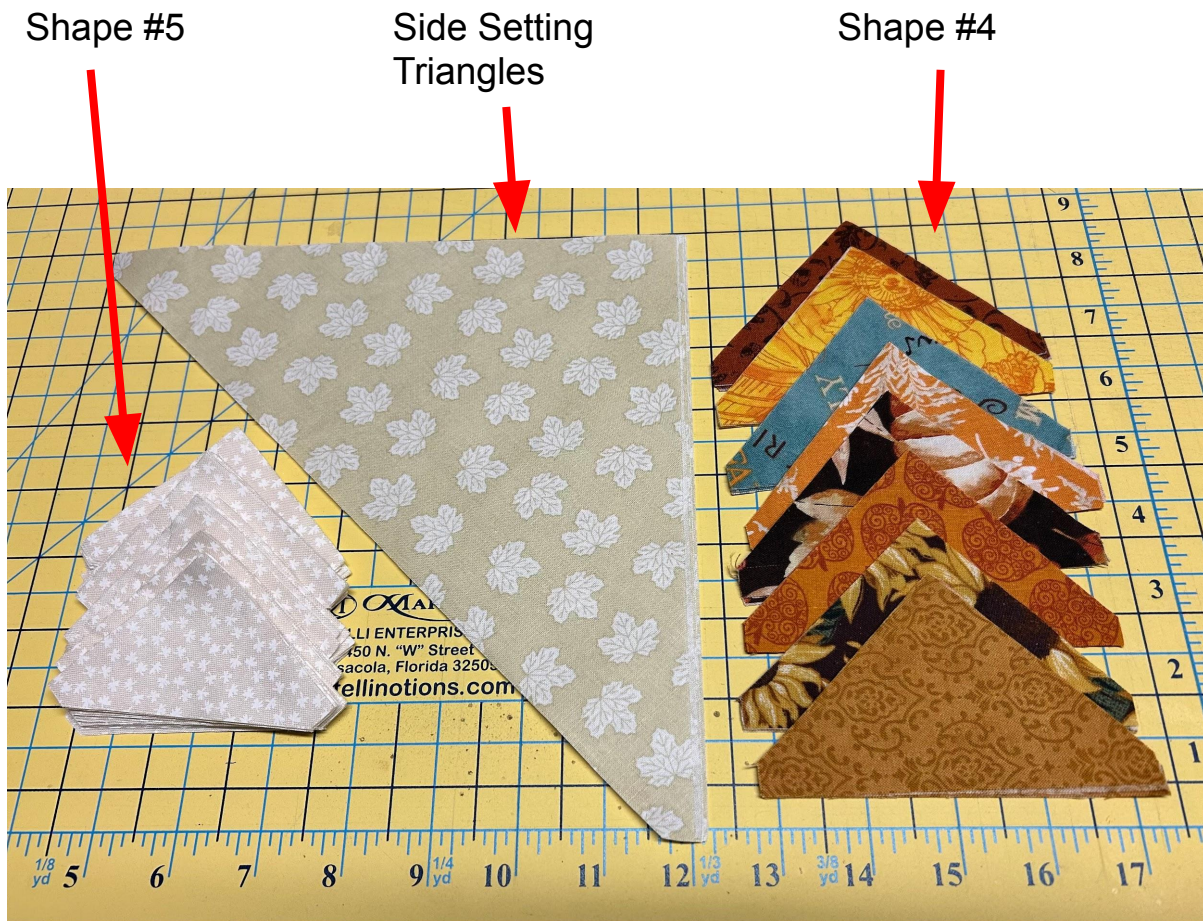
### Need some AccuQuilt mats, dies or a new pick tool?

Your support through my affiliate link helps me continue creating patterns, classes and retreats. Thank you for choosing to shop through this link!



# Cutting Directions

- ❑ Cut 4 of Shape 4, #55711, from each of the 8 squares.
- ❑ Cut 64 of Shape 5, #55712, from the background fabric.
- ❑ Cut 6 **SIDE** setting triangles from 8" setting triangles #55551.
- ❑ Cut 4 strips WOF of binding fabric using 2 ½" strip die, #55017 **OR** #55014.





## Piecing Directions

1. Chain piece all of Shape 5 HST onto the **right side** of Shape 4 QST, right sides together. Set your seams and press seam toward the HST being careful not to stretch the bias edge.



2. Repeat on the **left side** of Shape 4 QST, with right sides together. Set your seams and press seam toward the HST being careful not to stretch the bias edge.



## Piecing Directions continued

You will have 4 flying geese from each of the prints for a total of **36** flying geese units.

3. Pair up 2 color sets of flying geese units for a total of 4 sets.

4. Sew 2 flying geese units together with the points going in the same direction.

5. Press the seam open **OR** toward the long side of 1 flying geese unit.

6. Repeat with the other 3 sets. Make 4 quarter blocks.



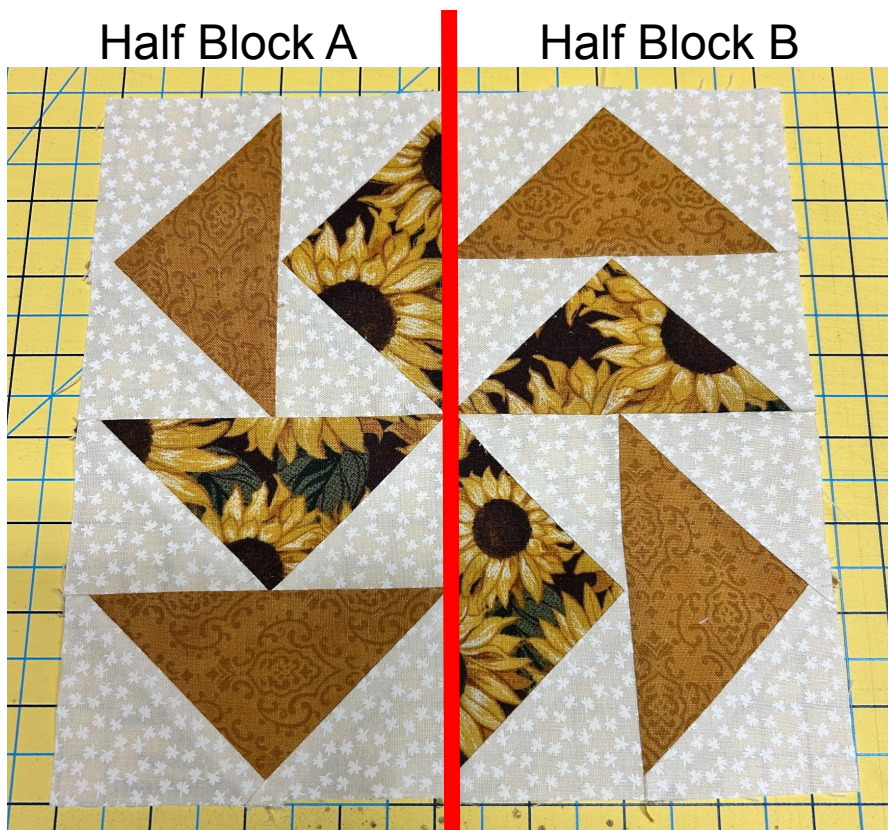
7. Repeat with the other 3 sets. Make 4 quarter blocks.



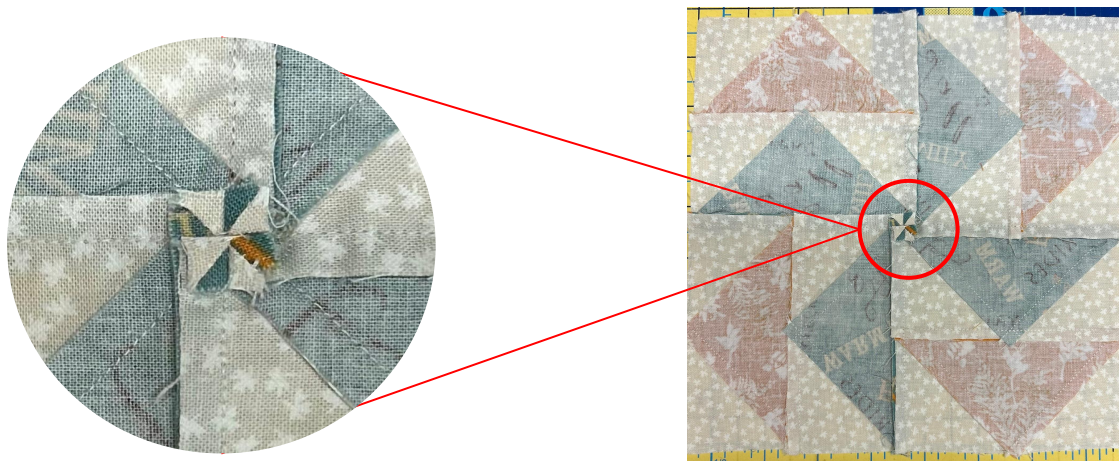


## Piecing Directions — last steps before the finale!!!

8. Pick 2 quarter blocks from the same set and sew into two half blocks, making 2 half blocks.
9. Sew two half blocks together to complete the block (see sample to the right of A & B).
10. Repeat with remaining sets, making 4 blocks.



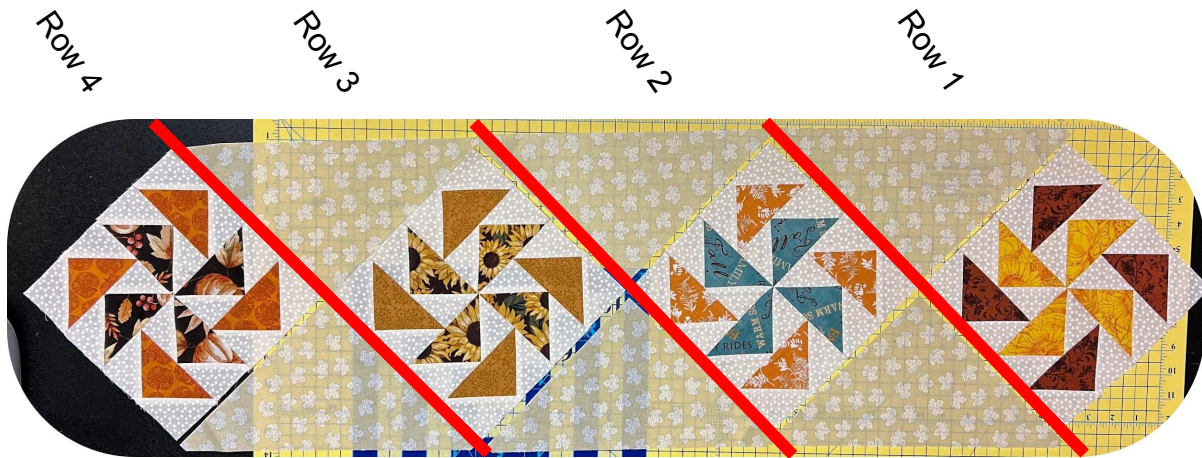
10. Press seams open or **Twirl** your seams.



## Time to finish your beautiful work!

Arrange the blocks on point and place the setting triangle on the sides.

1. Sew setting triangle and blocks into 4 diagonal rows.
2. Sew the 4 rows together.
3. Press seams toward setting triangles.



## Finishing Touches!

Quilt and bind—and just like that, you’ve created a beautiful centerpiece for your table!





## Extra Stuff

WOF = width of fabric,  
HST = half square triangle,  
QST = quarter square triangle



Please join my Facebook community, *Everything AccuQuilt*, for tips, inspiration, and quilty fun!

If you'd like to support my work, you can shop through my AccuQuilt affiliate link:

<https://www.awin1.com/cread.php?awinmid=88677&awinaffid=2059203>

I earn a small commission at no extra cost to you—thank you so much for using this link!



**Stay in the loop!** Sign up for emails to hear about upcoming classes, retreats, and sew-alongs at [www.JuJuBeesRetreats.com](http://www.JuJuBeesRetreats.com).

**Thank you!**  
*Your GO! Guru, Julie*

# Supplies Needed

## Fabric

- ❑ 8 different squares that measure  $5 \frac{3}{4}$ "
- ❑  $\frac{1}{3}$  yd background fabric
- ❑  $\frac{1}{2}$  yd for setting triangles
- ❑  $\frac{1}{3}$  yd binding, 4 strips
- ❑ 18" x 54" for backing or  $1 \frac{1}{8}$  yard, leftover could be used for binding.
- ❑ 15" x 50" batting
- ❑ Thread to match background

## AccuQuilt 8" Mix and Match Qube

- ❑ Shape 4 (QST) #55711
- ❑ Shape 5 (HST) #55712
- ❑ 8" setting triangles #55551
- ❑  $2 \frac{1}{2}$ " strip die #55017 or #55014
- ❑ Cutting mats for dies: 6" x 6", 10" x 24", 6" x 24"