



DATE: Saturday, April 6th, 2024

LOCATION: Deer Creek Intermediate School, 21175 N. MacArthur Blvd., Edmond, OK 73012

EVENT PARKING:

Primary parking for the Creek Classic is at the Deer Creek Performing Arts Center (PAAC), which is situated between Deer Creek High School and the Deer Creek Intermediate School. Please plan your route into the event from the south using NW 206th St. (Covell Rd) as N. MacArthur Blvd will temporarily be closed from the north off NW 220th St. (Coffee Creek Rd) for course setup. Additional parking is noted in yellow on the provided

START TIMES:

- 1 Mile Fun Run/Walk Starts at 8:30 a.m.
- 5K and 10K starts at 9:00 a.m.
- The course is USATF-certified and will be chip-timed. Both the 5K and 10K course maps are attached.
- Winner recognition for the top Male and Female for both the 5K and 10K. Red Coyote gift cards for the top Male and Female in the 5k & 10k as well as the overall Male and Female winners of the 10k will receive entry into the OKC Marathon on April 28, 2024.

PANCAKE BREAKFAST:

Your registration includes a ticket to the post-race pancake breakfast, which will be held in the Deer Creek Intermediate School cafeteria. Head over after your race. Tickets will be available for purchase on the day for non-runners for \$5. The pancake breakfast is hosted by the Deer Creek High School Cross Country and Track team.

PACKET PICKUP TIMES AND LOCATIONS:

- Thursday, April 4th from noon to 7 p.m. at the Edmond Red Coyote; or
- Friday, April 5th from 4 p.m. to 7 p.m. at the Deer Creek Intermediate School, next to Deer Creek High School, or
- Saturday, April 6th from 7 a.m.-8:30 a.m. at the Deer Creek Intermediate School, next to Deer Creek High School

To help make check-in go as smoothly as possible, please bring a copy of your registration confirmation QR code to packet pickup, printed out or on your smartphone.

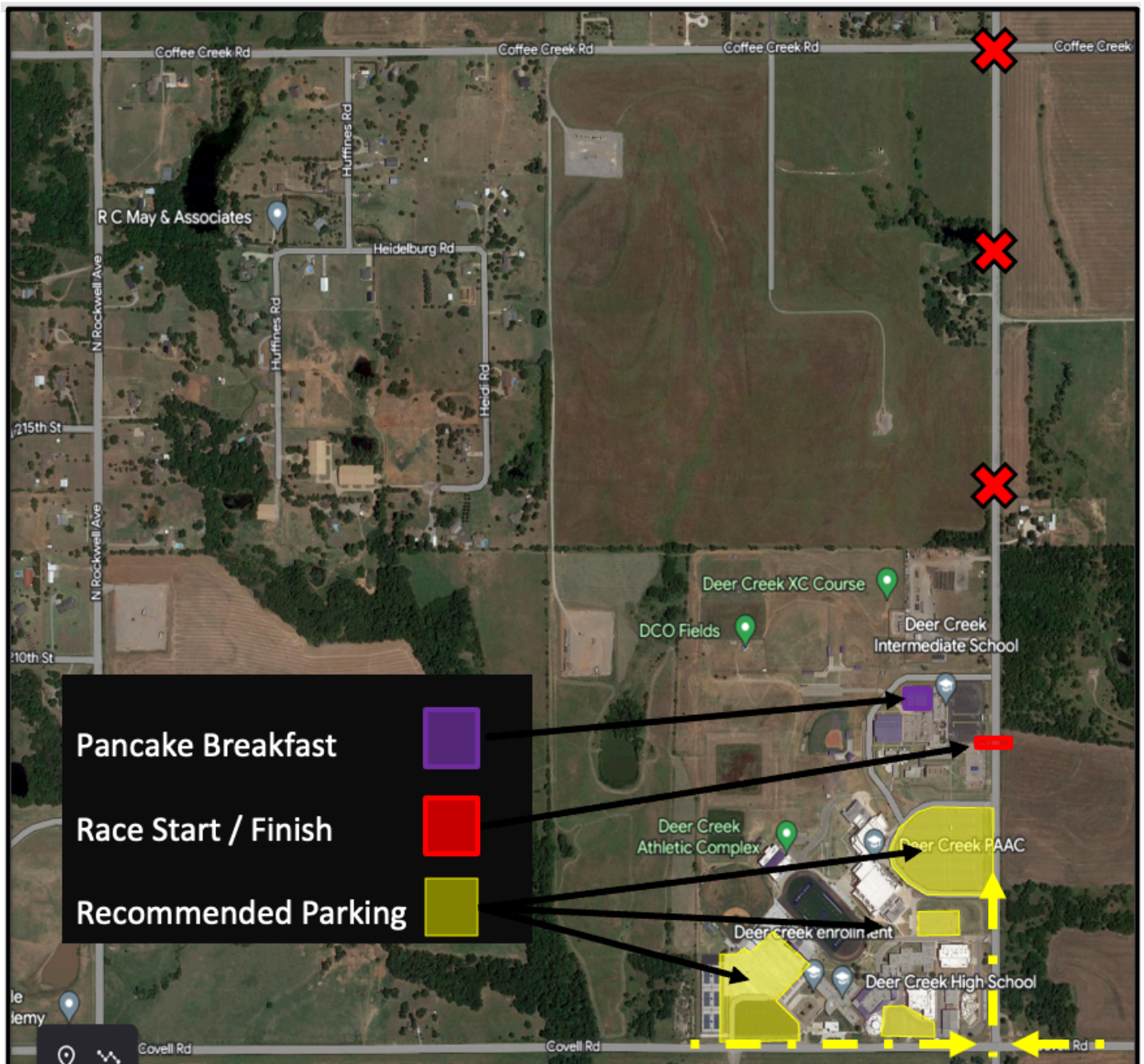
For more information check our website dcsfoundation.org or contact DCSF Trustee Paul Elder at (405) 933-5663 or pelder@dcsfoundation.org.



CREEK CLASSIC

FUN RUN ♥ 5K ♥ 10K
DEER CREEK SCHOOLS FOUNDATION

2024 Race Day Activity Map





CREEK CLASSIC

FUN RUN ♥ 5K ♥ 10K
DEER CREEK SCHOOLS FOUNDATION

1-Mile Fun Run/Walk





Creek Classic 5k 2024



Edmond, OK – 5,000 meters

Start/Finish: On MacArthur, directly in line with the south curb of the entrance of the Deer Creek Intermediate School.

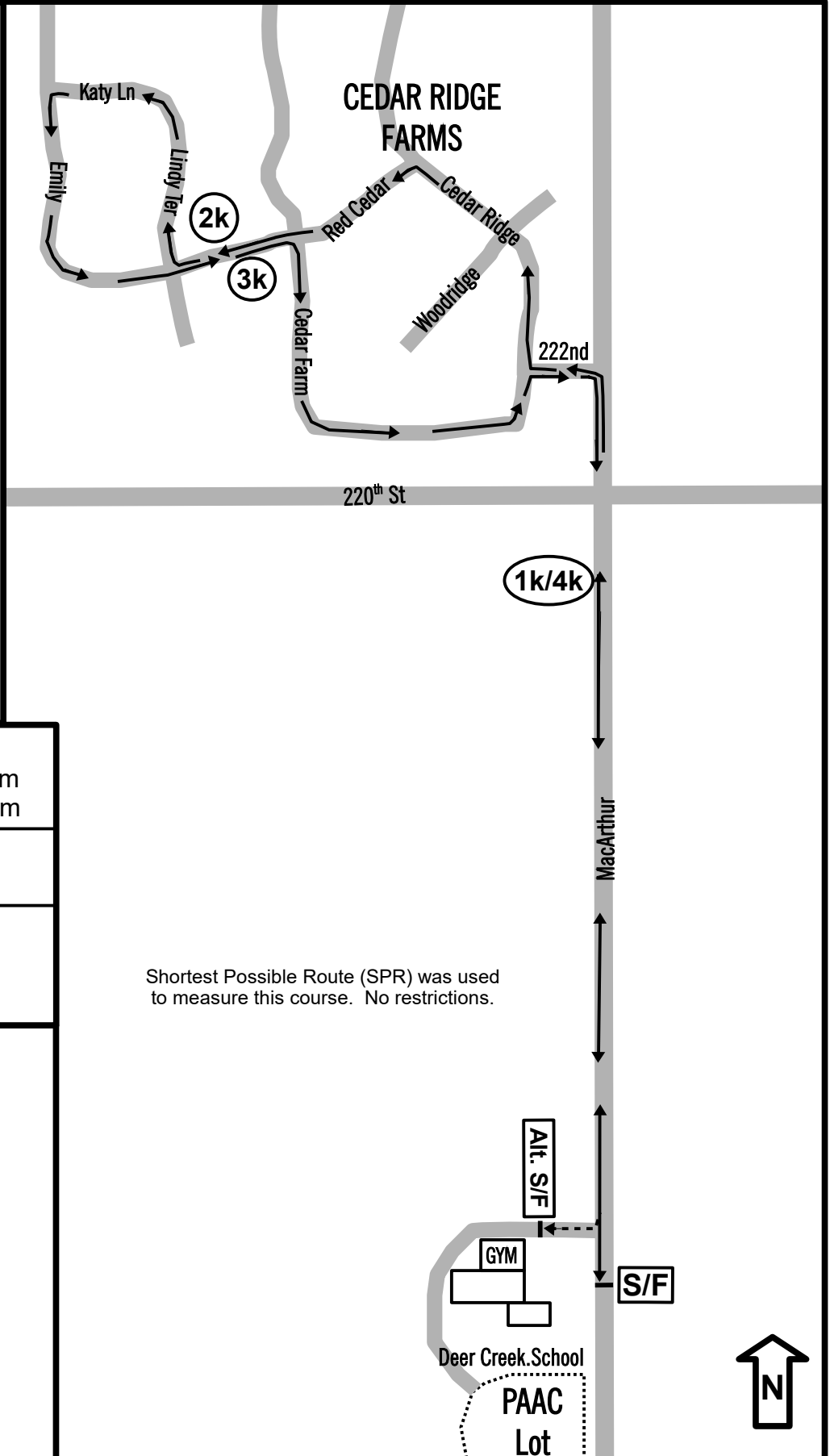
1k/4k: On MacArthur, 75 m south of the stop sign at the SE corner of MacArthur & 220th.

2k: On Red Cedar, 63 m east of the Lindy Terrace & Red Cedar intersection

3k: On Red Cedar, 40 m west of the stop sign on the SW corner of Red Cedar & Cedar Farm.

Alternate Start/Finish:

On road that circles around Deer Creek School from the North. 4 meters east of the red fire hydrant in front of the gym at the NE corner of the intermediate school.



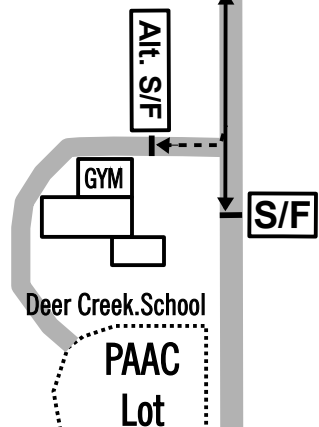
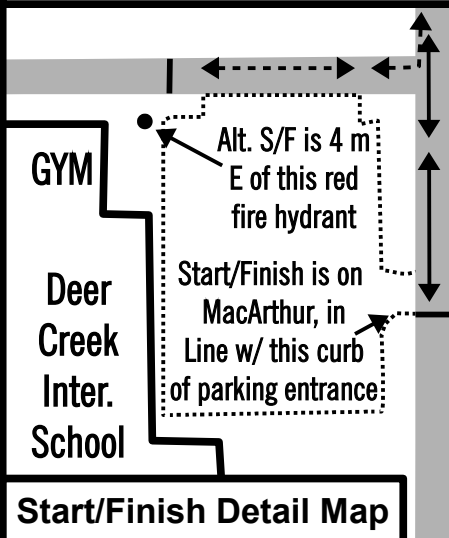
Elevations:

Start: 335 m Finish: 335 m
Lowest: 335 m Highest: 341 m

Race Contact: Paul Elder
jpaulelder80@gmail.com

Measured by:

Martin Updike on 1/10/2023
918-577-1956,
martin@i40raceservice.com





Creek Classic 10k 2024



Edmond, OK – 10,000 meters

Elevations:

Start: 335 m Finish: 335 m
Lowest: 335 m Highest: 341 m

Measured by: Martin Updike on 1/10/2023
918-577-1956,
martin@i40raceservice.com

Race Contact:

Paul Elder
jpaulelder80@gmail.com

Start/Finish: On MacArthur directly in line with the south curb of the entrance of the Deer Creek Intermediate School.

1k/9k: On MacArthur, 75 m south of the stop sign at the SE corner of MacArthur & 220th.

2k: On 220th, 4 m W of the mailbox at 700 220th St,

3k: On Rockwall, 13 m N of the stop sign at 222nd & Rockwall

4k: On Rockwall, 83 m S of the stop sign warning sign.

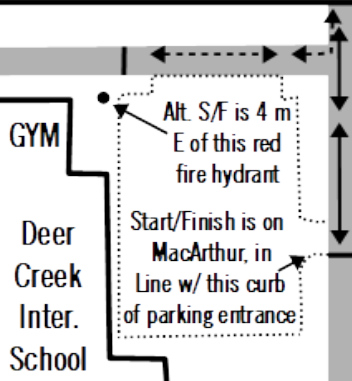
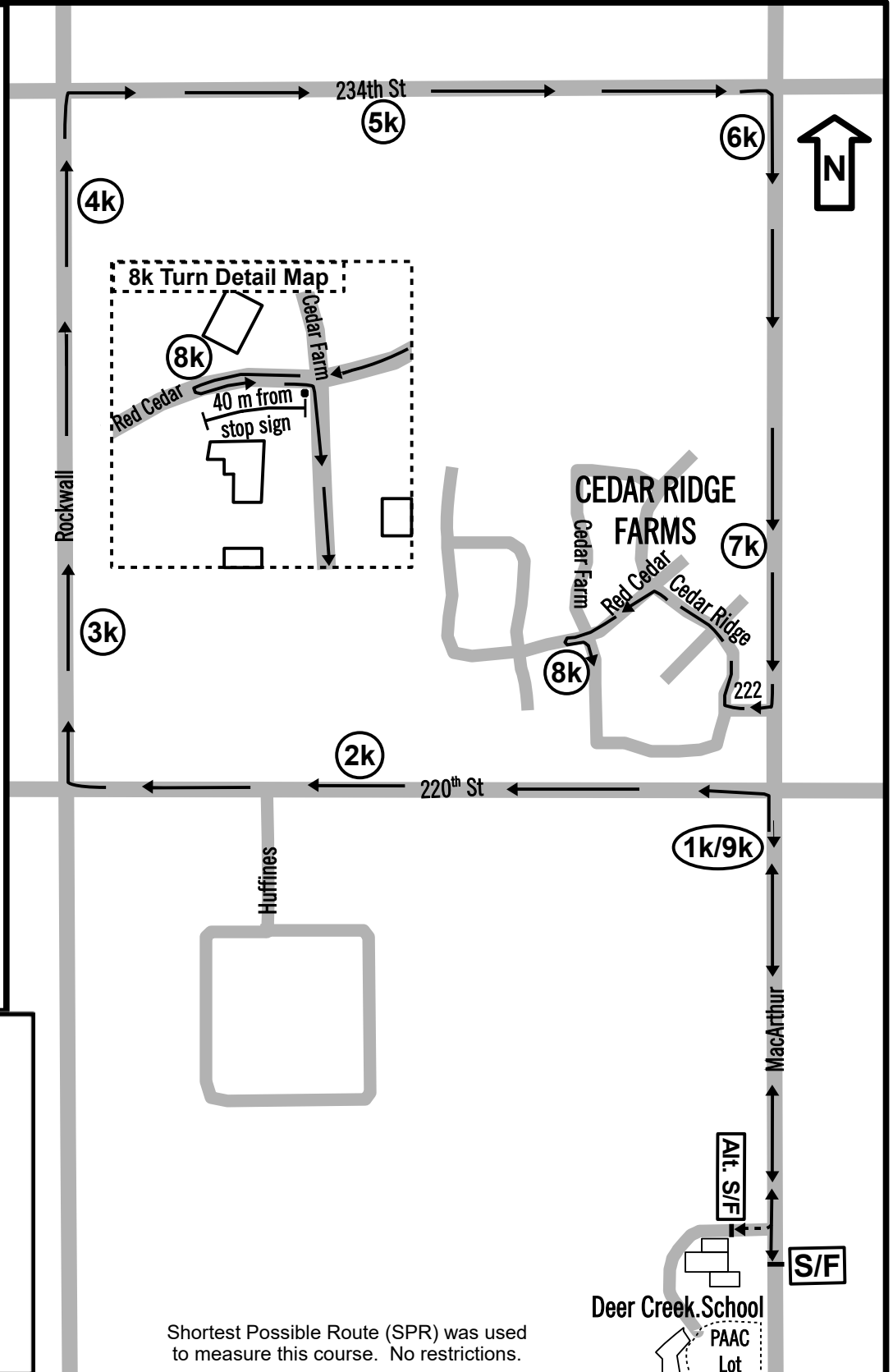
5k: On 234th St. 51 meters east of the east edge of the driveway of 6900 Sorghum Mill Rd (234th)

6k: On MacArthur, 30 m N of the mailbox at 23350 N MacArthur.

7k: On MacArthur, 104 m N of the right turn yield sign when approaching 222nd.

8k & Turnaround: On Red Cedar, 40 m west of the stop sign on the SW corner of Red Cedar & Cedar Farm.

Alternate Start/Finish: On road that circles around Deer Creek School from the North. 4 meters east of the red fire hydrant in front of the gym at the NE corner of the intermediate school.



Start/Finish Detail Map

Shortest Possible Route (SPR) was used to measure this course. No restrictions.