



DATE: Saturday, March 29th, 2025

LOCATION: Deer Creek Intermediate School, 21175 N. MacArthur Blvd., Edmond, OK 73012

EVENT PARKING: **UPDATE March 26 - DETOUR - Must access parking from Rockwell and NW 206th (Covell)**

Due to unforeseen utility work, the roundabout at NW 206th and MacArthur (is partially closed). You cannot access the school from the east at 206th (Covell) or N. MacArthur Blvd. as it is closed at the roundabout (northbound) and will also be temporarily closed (southbound) off of NW 220th (Coffee Creek) for course setup. Parking for the Creek Classic will be available on the south side of the football stadium and also at the Deer Creek Performing Arts Center (PAAC), which is situated between Deer Creek High School and the Deer Creek Intermediate School. Please plan your route into the event **ONLY** from the west using NW 206th (Covell) from Rockwell. Parking is noted in yellow on the provided map.

START TIMES:

- 1 Mile Fun Run/Walk Starts at 8:30 a.m.
- 5K and 10K starts at 9:00 a.m.
- The course is USATF-certified and will be chip-timed. Both the 5K and 10K course maps are attached.
- Winner recognition for the top Male and Female for both the 5K and 10K. Gift cards for the top Male and Female in the 5k & 10k as well as the overall Male and Female winners of the 10k will receive entry into the OKC Marathon on April 26, 2025.

PANCAKE BREAKFAST:

Your registration includes a ticket to the post-race pancake breakfast, which will be held in the Deer Creek Intermediate School cafeteria. Head over after your race. Tickets will be available for purchase on the day for non-runners for \$5. The pancake breakfast is hosted by the Deer Creek High School Cross Country and Track team.

PACKET PICKUP TIMES AND LOCATIONS:

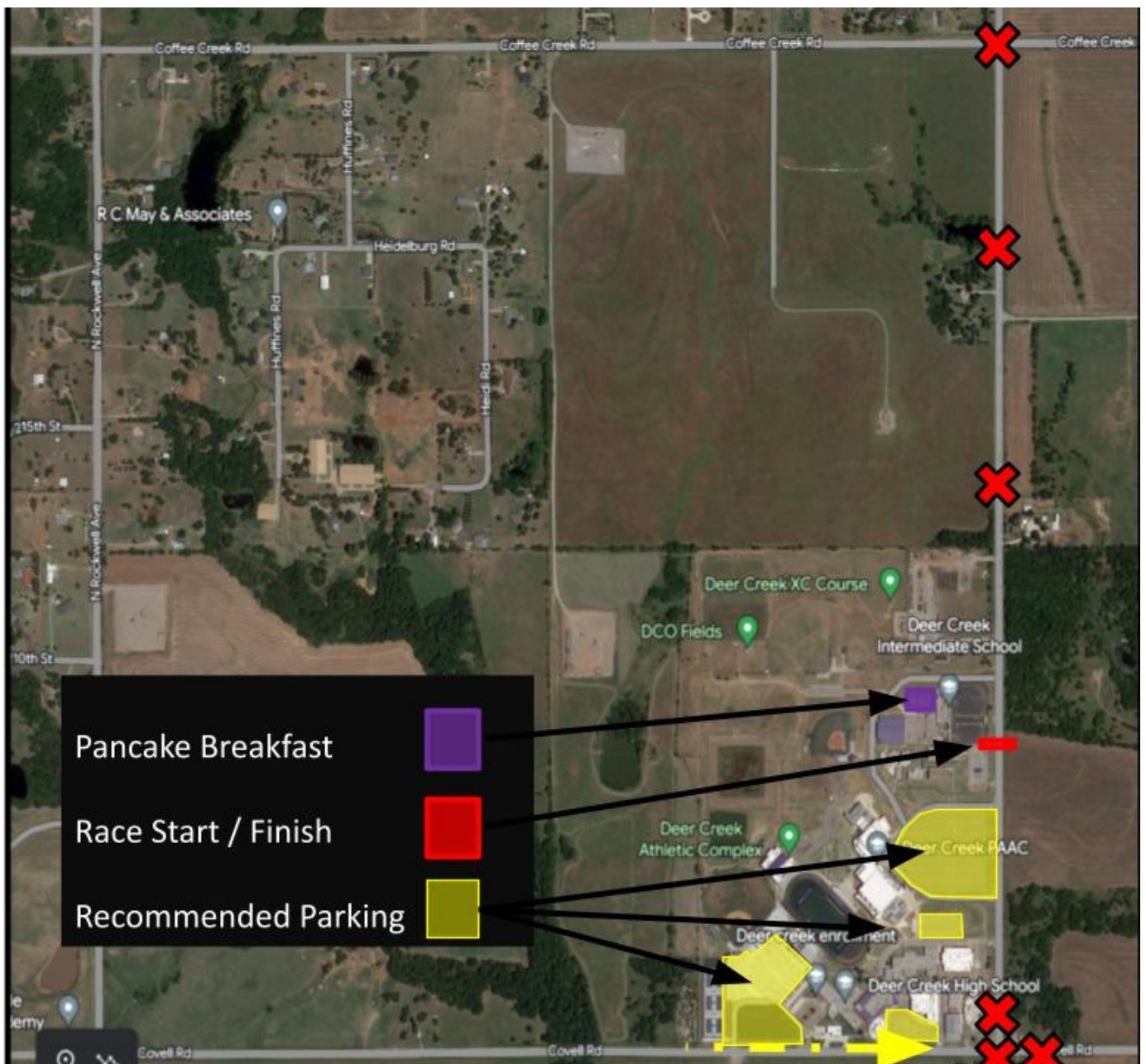
- Thursday, March 27th from 9 a.m. to 4 p.m. at the White Buffalo Coffee Bar (17784 N. MacArthur Blvd.) or
- Friday, March 28th from 4 p.m. to 7 p.m. at the Deer Creek Intermediate School, next to Deer Creek High School, or
- Saturday, March 29th from 7 a.m.-8:30 a.m. at the Deer Creek Intermediate School, next to Deer Creek High School

To help make check-in go as smoothly as possible, please bring a copy of your registration confirmation, name or QR code to packet pickup, printed out or on your smartphone.

For more information check our website dcsfoundation.org or contact DCSF Trustee Shea Bracken at (918) 845-2252 or sbracken@dcsfoundation.org.

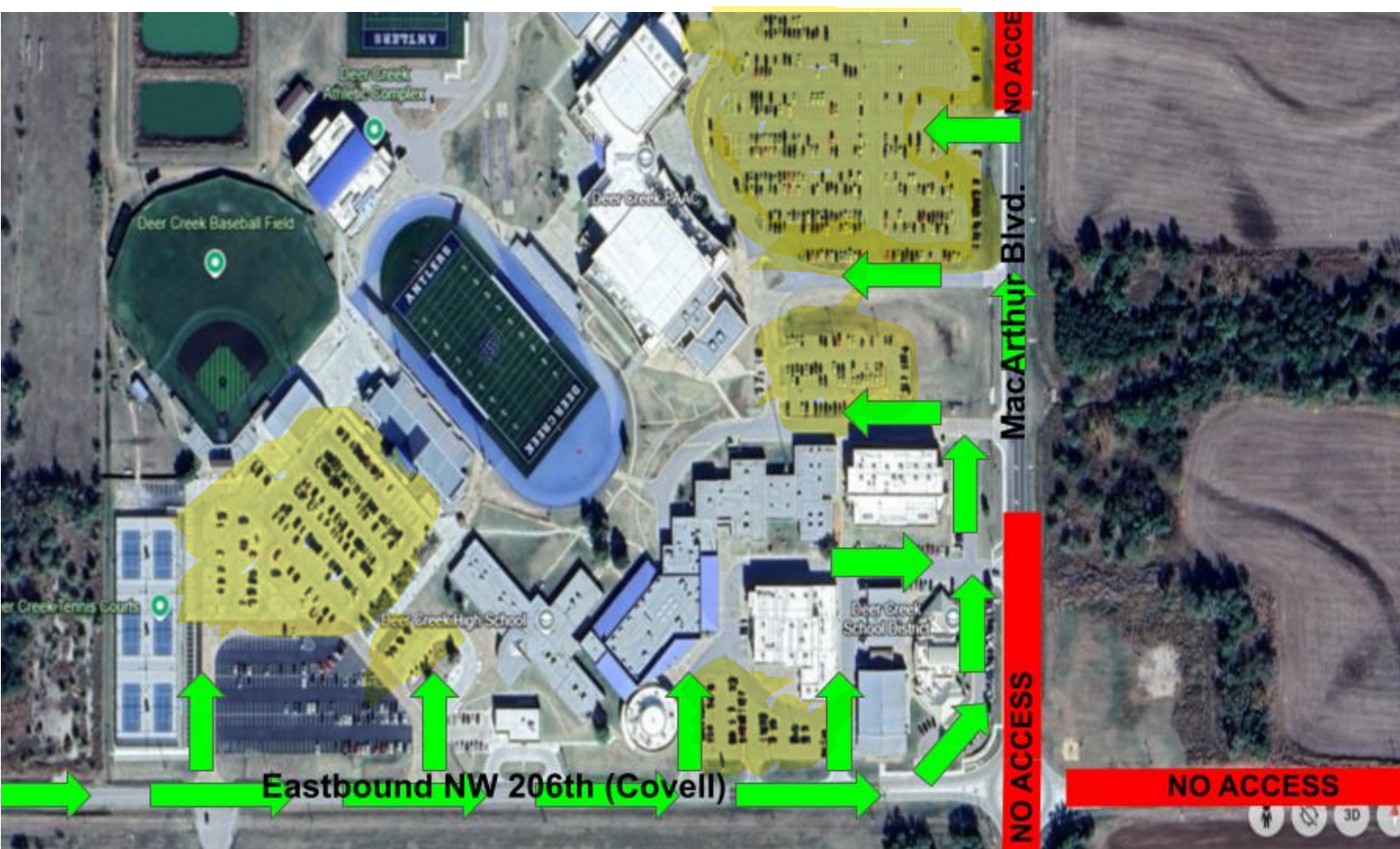


2025 Race Activities Map





2025 Detour Parking Map



Due to utility work, all parking HAS to be accessed from eastbound NW 206th (Covell) at Rockwell.



2025 1-Mile Fun Run/Walk





Creek Classic 5k 2025

Edmond, OK – 5,000 meters



Start/Finish: On MacArthur, directly in line with the south curb of the entrance of the Deer Creek Intermediate School.

1k/4k: On MacArthur, 75 m south of the stop sign at the SE corner of MacArthur & 220th.

2k: On Red Cedar, 63 m east of the Lindy Terrace & Red Cedar intersection

3k: On Red Cedar, 40 m west of the stop sign on the SW corner of Red Cedar & Cedar Farm.

Alternate Start/Finish:

On road that circles around Deer Creek School from the North. 4 meters east of the red fire hydrant in front of the gym at the NE corner of the intermediate school.

Elevations:

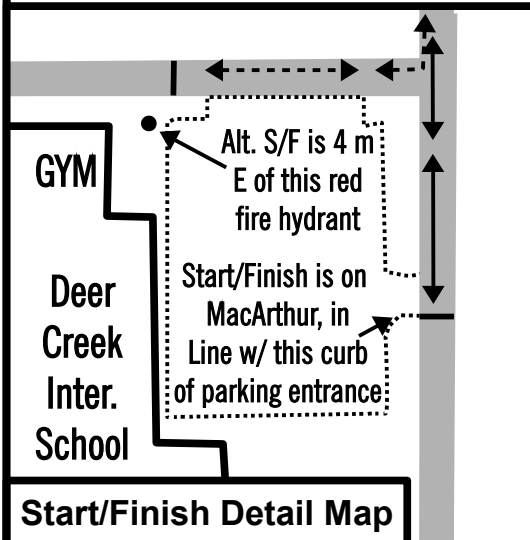
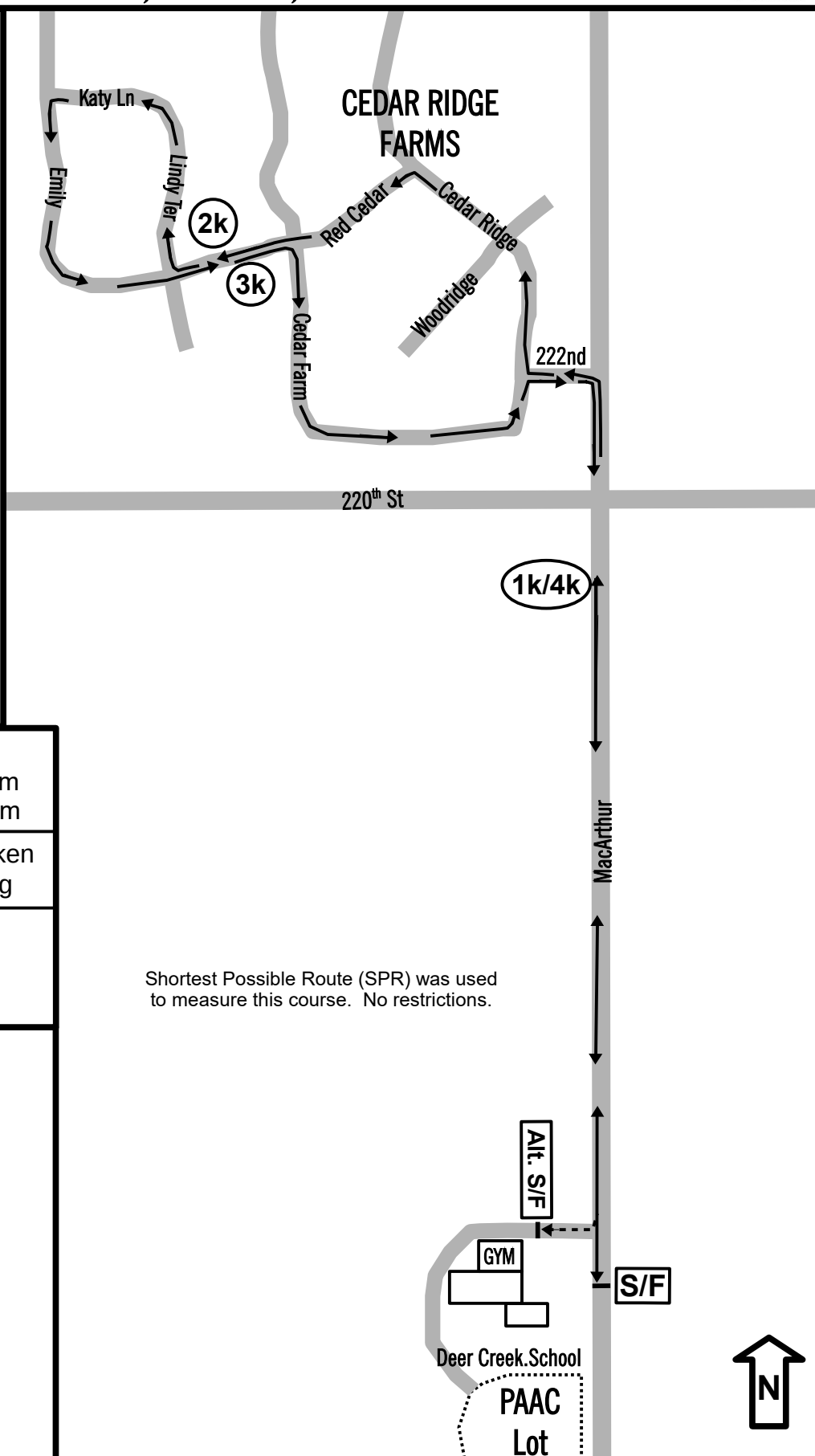
Start: 335 m Finish: 335 m
Lowest: 335 m Highest: 341 m

Race Contact: Shea Bracken
sbracken@dcsfoundation.org

Measured by:

Martin Updike on 1/10/2023
918-577-1956,
martin@i40raceservice.com

Shortest Possible Route (SPR) was used to measure this course. No restrictions.





Creek Classic 10k 2025

Edmond, OK – 10,000 meters



Elevations:

Start: 335 m Finish: 335 m
Lowest: 335 m Highest: 341 m

Measured by: Martin Updike on 1/10/2023
918-577-1956,
martin@i40raceservice.com

Race Contact:

Shea Bracken
sbracken@dcsfoundation.org

Start/Finish: On MacArthur directly in line with the south curb of the entrance of the Deer Creek Intermediate School.

1k/9k: On MacArthur, 75 m south of the stop sign at the SE corner of MacArthur & 220th.

2k: On 220th, 4 m W of the mailbox at 700 220th St,

3k: On Rockwall, 13 m N of the stop sign at 222nd & Rockwall

4k: On Rockwall, 83 m S of the stop sign warning sign.

5k: On 234th St. 51 meters east of the east edge of the driveway of 6900 Sorghum Mill Rd (234th)

6k: On MacArthur, 30 m N of the mailbox at 23350 N MacArthur.

7k: On MacArthur, 104 m N of the right turn yield sign when approaching 222nd.

8k & Turnaround: On Red Cedar, 40 m west of the stop sign on the SW corner of Red Cedar & Cedar Farm.

Alternate Start/Finish: On road that circles around Deer Creek School from the North. 4 meters east of the red fire hydrant in front of the gym at the NE corner of the intermediate school.

