



23815 HICKORY PASS SAN ANTONIO, TX 78264

ZARATESTEELWORKS@GMAIL.COM

WWW.ZARATESTEELWORKS.COM | PHONE: 210-765-0974

SS FRONT END GRILLE FILLERS 2015-2019 SLINGSHOT MODELS INSTALLATION INSTRUCTIONS



! PLEASE READ ALL INSTRUCTIONS BEFORE STARTING INSTALLATION

KIT INCLUDES

QTY-1 Left Side Front Grille Filler
QTY-1 Right Side Front Grille Filler

Stainless Steel Screw Pack:

QTY-4 1/4" Inch x 1" Bolts
QTY-2 1/4" Inch x 1-1/2" Bolts
QTY-6 1/4" Locking Nuts
QTY-6 1/4" Flat Washers

TOOLS NEEDED FOR INSTALLATION

-Blue Painters Tape
-Crescent Wrench
-Power Drill
-1/4" Drill Bit

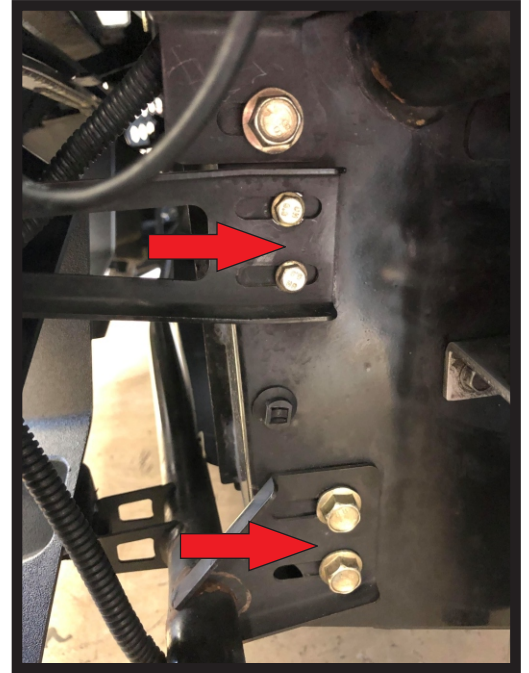
INSTRUCTIONS APPLY FOR THE FOLLOWING KITS:

- TRIO
- HONEYCOMB
- KYLO
- SPEEDSTER
- CUSTOM

- 1** Mask off the area where you plan on test fitting and installing your new fillers.
IMPORTANT: Use blue painters tape to prevent front bumper damage during install.



- 2** Loosen but do not remove these 4 bumper bolts on both sides. This will help you line up the grille fillers easily.



Note: Some front bumpers might need to be adjusted and aligned for the fillers to fit perfectly . We have noticed some SS bumpers have some variations on fitment from the factory specs, so please keep that in mind. Bumper may need to be adjusted if the fit is too tight.

- 3** After you have protected the area where you plan on installing the fillers proceed to align them to your front bumper.

Note: This gap will be closed after bolting together. If needed, adjusting the top and bottom tabs can align to a tight fit.



4

After you have aligned the front fillers mark the bottom hole. We have adjusted it to factory specs but like noted after step 2, some bumpers have alignment variations. A crescent wrench can bend those tabs for adjustment and will align the bumper fillers.



5

After the bottom grille has been marked proceed to the top part of the alignment. You want to push the top part of the grille all the way forward to sit flush behind the bumper. Then proceed to mark the 2nd set of holes for drilling.

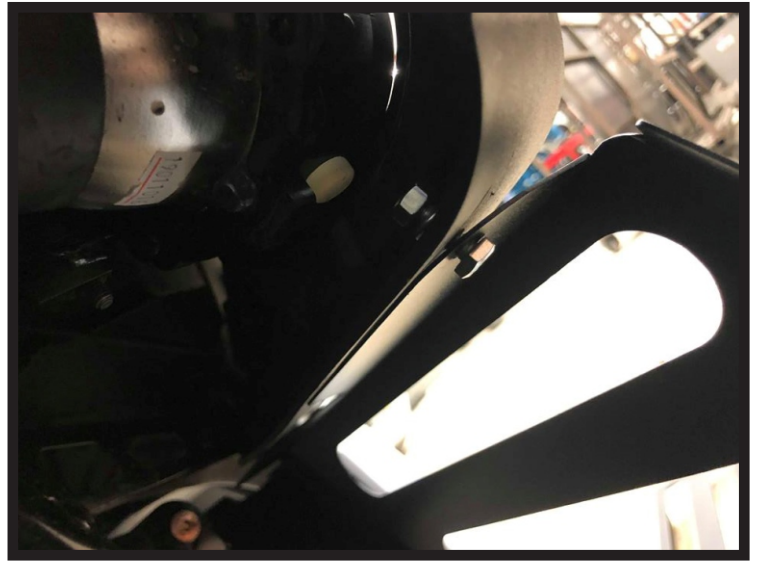


6

After the grille is aligned and looks good proceed to drill the 3 holes with a 1/4 inch drill bit.



- 7** Then tighten your 1 1/2"inch bottom bolt first with the supplied hardware and proceed to bolting the top of the fillers in place with the 1"inch bolts. Once fillers are in place finish tightening the bumper bolts that were loosened from Step 2.
- Note:** Older models may vary and if you have aftermarket headlights hardware may require longer bolts.



THANK YOU FOR YOUR PURCHASE!
FOLLOW US ON FACEBOOK & INSTAGRAM
TO SEE OUR LATEST PRODUCTS.
TAG US IN WITH YOUR FINISHED INSTALLED
PICTURES FOR A CHANCE TO WIN FREE PRODUCTS!

