



VANDERHALL WHEEL RING DIY KIT

2016-CURRENT YEAR / ALL MODELS

INSTALLATION INSTRUCTIONS

23815 HICKORY PASS SAN ANTONIO, TX 78264

SALES@ZARATESTEELWORKS.COM

WWW.ZARATESTEELWORKS.COM

| PHONE: 888.552.9272



PLEASE READ ALL INSTRUCTIONS BEFORE STARTING INSTALLATION

KIT INCLUDES

QTY- 1 Front Driver Wheel Ring
QTY- 1 Front Passenger Wheel Ring
QTY- 1 Back Wheel Ring

NOTE: Refer to picture for orientation of rings.

P = PASSENGER

D = DRIVER

B = BACK

TOOLS NEEDED FOR INSTALLATION

- Jack
- Jack Stand
- 10mm Hex Socket (Use on Rear Caliper)
- Thread Locker (Blue)
- Standard Socket & Ratchet set
- Allen key set

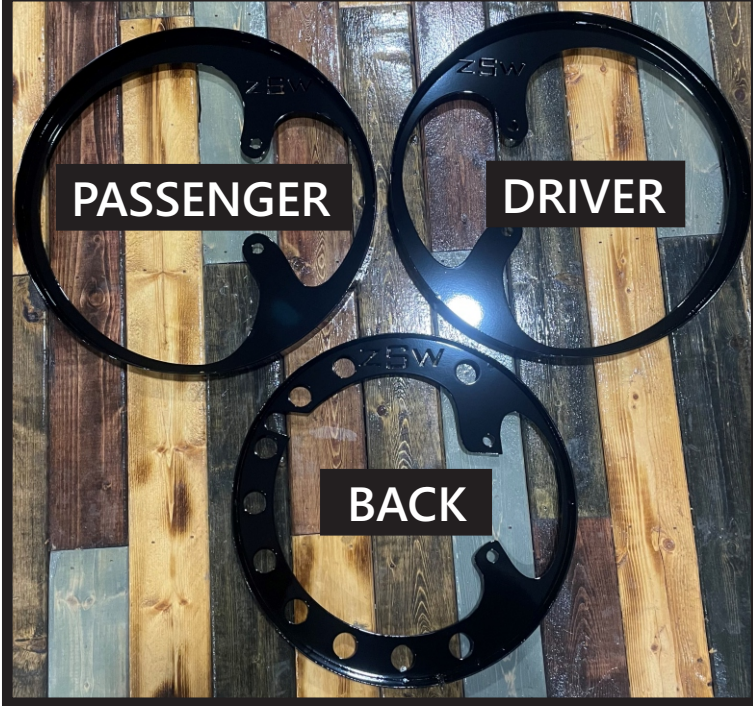
SIZE INFORMATION

Note: This kit does not come with LEDs

Specs: The width of each wheel ring measures at 1.5" inches, length for LED lights measures at 44" for the back and 49" inches for the fronts. The Wheel Ring kit mounts up to your factory caliper bolts.

IMPORTANT: Follow steps 1-3 for front driver and passenger side installation.

WHEEL RING ORIENTATION



1

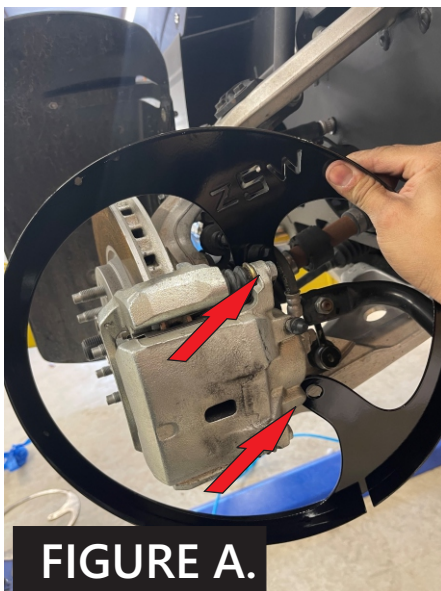
Start on front passenger side:
Remove the top and bottom
caliper bolts as shown below

Note: Hold caliper while unbolting,
so caliper won't slip or fall off.



2

Position the wheel ring as shown in
Figure A, line up the holes from the
wheel ring to the caliper holes where
the bolts were removed.



3

Reinstall the caliper bolts that were
removed from step 1.



IMPORTANT: Refer to manufacture
torque specs recommendations.



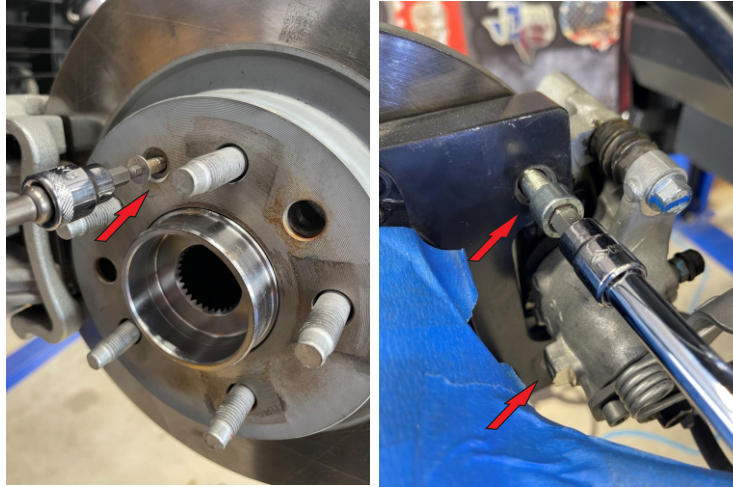
IMPORTANT: Before Step 4, you will need to release the hand brake in order for the rear caliper to slide off of the rotor, the caliper will not slide off if its engaged.

4

Back Wheel ring install:

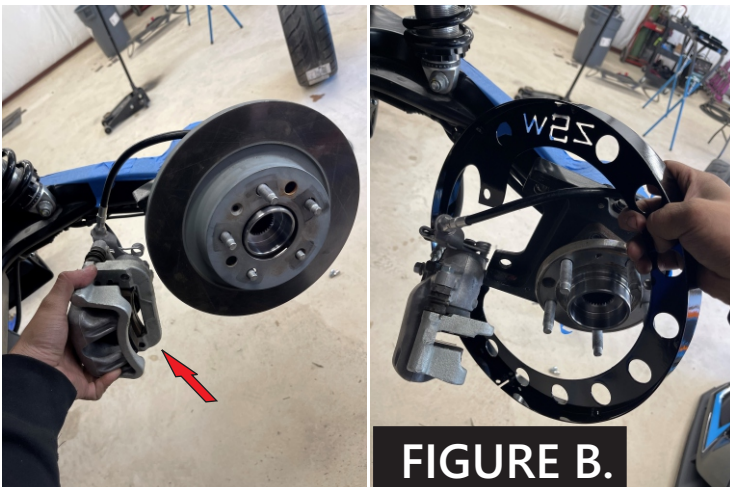
Start by removing the front side of the rotor with a 4mm hex socket.

Then on the back side of the rotor remove the 2 caliper bolts with a 10mm hex socket.



5

Remove the caliper from the rotor and pass it through the wheel ring as shown in figure B.



6

After you have passed the rotor through the wheel ring proceed to reinstalling the rotor using a 4mm hex socket and 10 mm hex socket for the caliper bolts. Note: We recommend using Loctite on the caliper bolts.

IMPORTANT: Refer to manufacture torque specs recommendations.





Your installation is now complete!

Note: Notches have been factored into the design of the wheel rings to allow zip ties to be used to secure the lights of your choice.

THANK YOU FOR YOUR PURCHASE!
FOLLOW US ON FACEBOOK & INSTAGRAM
TO SEE OUR LATEST PRODUCTS.
TAG US IN WITH YOUR FINISHED INSTALLED
PICTURES!

