

# Holiday HEARTS



*Melinda Imthurn*

Artistic Director

*Special Guests*

Mesquite Children's Chorus

Irma Lerma Rangel Young Women's Leadership

School Choir from DISD

Members of Turtle Creek Chorale

December 4, 2022 | Moody Performance Hall



the women's  
chorus of dallas

[officialTWCD](#)

[singTWCD](#)

[singtwcd](#)

[twcd.org](#)

## CONTENT LINKS

[Program Order](#)

[Thank You](#)

[Sponsors](#)

[About The Women's  
Chorus of Dallas](#)

[Board of Directors](#)

[Officers](#)

[Director](#)

[Production Support](#)

[Accompanist](#)

[Volunteers](#)

[Singers](#)

[How to Join](#)

[Capital Club](#)

[Guest Performers](#)

[Mesquite Children's Chorus](#)

[Upcoming Dates](#)

[Irma Lerma Rangel Young  
Women's Leadership School  
Choir from DISD](#)

[In Memory](#)

[Turtle Creek Chorale](#)

## THE WOMEN'S CHORUS OF DALLAS

presents

# HOLIDAY HEARTS

Sunday, December 4

3 pm

Moody Performance Hall

Melinda Imthurn, Artistic Director and Principal Conductor

Timothy Sanchez, Principal Accompanist

### THE WOMEN'S CHORUS OF DALLAS

Your Holiday Song

Emily Saliers

Arranged by Roger Emerson

At This Table

Jonas Myrin and Idina Menzel

Arranged by Audrey Snyder

At Christmas

Shane Pittman and Toby Lightman

Arranged by Mac Huff

### PRIMA VOLTA

Ashley Penov and Timothy Sanchez, Directors

Light

Lisa Loeb and Cliff Goldmacher

Arranged by Andy Beck

Don't Be A Jerk! It's Christmas

Thomas Kenny and Andy Paley

Arranged by Roger Emerson

### MESQUITE CHILDREN'S CHORUS

Julie Ward, Head Director

Lisa Buckmaster, Accompanist

Bidi Bom

David Eddelman

Stopping By Woods on a Snowy Evening

Audrey Snyder

Jingle Bells

arranged by Audrey Snyder

### THE WOMEN'S CHORUS OF DALLAS

Hope for Resolution

Paul Caldwell and Sean Ivory

Snow Medley Sing-A-Long

Jingle Bell Rock

Marshmallow World

Suzy Snowflake

Frosty the Snowman

Holly Jolly Christmas

### Intermission

### THE WOMEN'S CHORUS OF DALLAS

With Members Of

**IRMA LERMA RANGEL YOUNG WOMEN'S  
LEADERSHIP SCHOOL CHOIR FROM DISD**

Snow Angel

Sarah Quartel

Narrative by Lisa Helps

Cellist: Hyunjung Kim

Narrators: Nancy Sanchez, Kimberly Foster, Victoria Imthurn-Lintz

I. Prologue

II. Creatures of Light

Text by Thomas Moore

III. God Will Give Orders

IV. Sweet Child

V. Snow Angel

With Members Of

**TURTLE CREEK CHORALE**

Peace, Peace

Rick and Sylvia Powell/Fred Bock/Will Varner

With Members Of

**MESQUITE CHILDREN'S CHORUS**

and

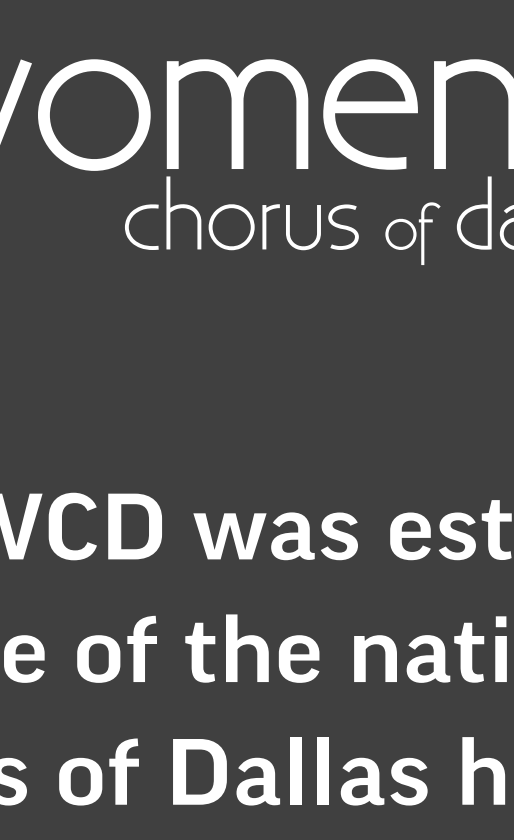
**IRMA LERMA RANGEL YOUNG WOMEN'S  
LEADERSHIP SCHOOL CHOIR FROM DISD**

Let There Be Peace On Earth

Sy Miller and Jill Jackson

Arranged by Jay Althouse

[BACK](#)



the women's  
chorus of dallas

## ABOUT THE WOMEN'S CHORUS OF DALLAS

The Women's Chorus of Dallas promotes the strength, diversity and empowerment of women by performing high quality music to entertain, inspire and serve the community.

TWCD was established in 1989 and has become recognized as one of the nation's finest women's choruses. The Women's Chorus of Dallas has performed by invitation at Carnegie Hall three times and with many notable artists, including the world-renowned Demi Lovato, Hugh Jackman, Kronos String Quartet, 60's pop star Lesley Gore, and Tony Award winner Victoria Clark. Local collaborative projects have included concerts with Dallas Black Dance Theater, TITAS, Turtle Creek Chorale, Texas Woman's University and University of North Texas Women's Choirs, Metropolitan Winds, and many others.

Under the leadership of Artistic Director Melinda Imthurn, TWCD performs three season concerts and many community outreach events each year to uphold its mission to promote the strength, diversity, and empowerment of women by performing music to entertain, inspire, and serve the community.

The Women's Chorus of Dallas is one of the nation's finest women's choruses, known for a commitment to excellent music and giving back to the community. Once the only chorus in Texas predominantly composed of gay and lesbian women, TWCD is proud of its diverse and welcoming membership, regardless of age, race, or sexual identity.



[BACK](#)





## Melinda Imthurn, Artistic Director

Melinda Imthurn is in her 18th season as Artistic Director for The Women's Chorus of Dallas. Under her leadership, the Chorus has increased its performance of music by women composers, as well as the commissioning of new works, with a focus on women of color and other un-

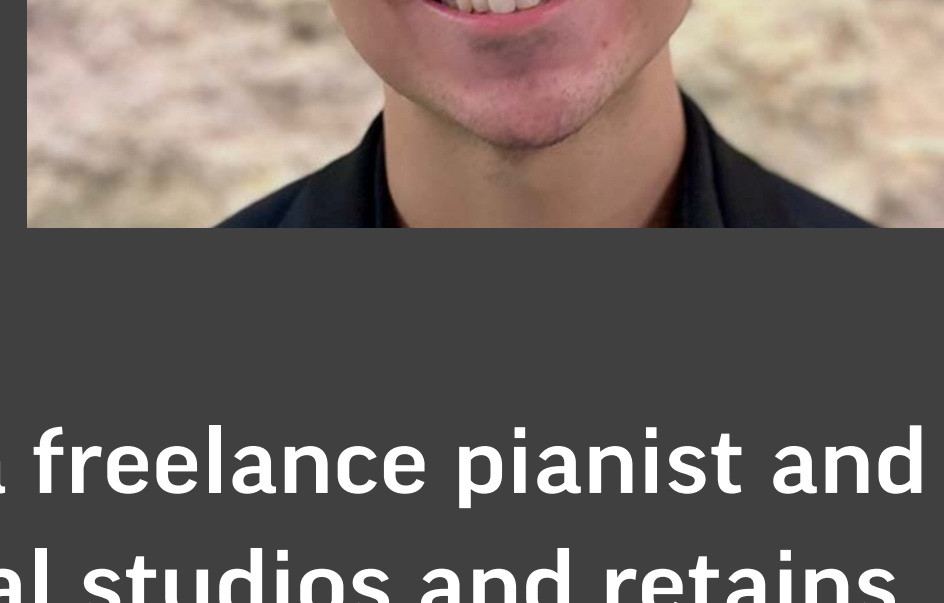
derrepresented voices. Notable performances include conducting TWCD at Carnegie Hall in 2019, collaborations with local arts organizations, community outreach performances, and concerts with notable artists including Demi Lovato, Hugh Jackman, Moira Smiley, Lesley Gore, Kronos Quartet, Harvard-Radcliffe Choral Society, Cornell Chorus, South Dallas Concert Choir, and Turtle Creek Chorale.

Melinda holds the Bachelor of Music degree in Vocal Performance and the Master of Music degree in Vocal Pedagogy from Texas Woman's University, with continued studies in Contemporary Commercial Music at Shenandoah Conservatory and in Choral Music at University of North Texas. An accomplished singer, she has performed with the Denton Light Opera Company, Deep Ellum Opera Theatre, Helios Ensemble, Fort Worth Early Music Society, Casa Mañana, and in solo recitals. Her past life experiences have included middle school music teacher, corporate training and marketing, and classical music radio announcer.

Melinda is Professor of Music at Dallas College, directing the choir and coordinating vocal studies at the Eastfield Campus. In addition, she maintains a busy private vocal studio, where her specialty is working with singers referred from medical professionals to rehabilitate their voices after vocal injury and/or surgery. She is a frequent clinician and adjudicator for choruses and soloists and enjoys the role of mentor to many high school choir directors in Dallas ISD. As much as she cherishes her musical and educational endeavors, the most important roles Melinda currently serves are mother to a spectacular nine-year-old, Victoria, and partner to her wonderful wife, Vanessa.

## Timothy Sanchez, Accompanist

Timothy Sanchez is a student at the University of North Texas pursuing a B.M in Music Theory and a B.M in Music Education. He serves as an active chorister for university ensembles, A Capella and Vox Aquilae and serves as an accompanist for Camerata and Upfront. When not in class, he works in the DFW metroplex as a freelance pianist and sacred musician. He collaborates with vocal studios and retains an active recital schedule.



## SINGERS | WINTER 2022

### SOPRANO I

Susananne G. Daniels  
Kim Foster†  
Avery Hager\*  
Lydia Miller  
Brittani Nearing  
Kristin Pearce  
Ashley Penov\*  
Anjali Rao  
Christina Reeves-Shull  
Amanda Russo  
Chelcie M. Smith\*  
Traci Stonum-Parker\*  
Tara Towbridge  
Stephanie Velloze\*

### SOPRANO II

Katrina Brooks  
Gloria Brown  
Blessing Dada  
Susan Lewis  
Tamara Moar

Leslie Moore  
Lindsey Morrison  
Lauren Neaves  
Kathryn Potere  
Esiri Tasker-Armstrong\*  
Suzy Watson  
Ariel Wentworth\*†  
Rachel Williams

### ALTO I

Maria Acon  
Carrie Anspach  
Andie Bernhardt  
Dianna Crowder  
Lauren Daniel\*  
Amanda Dorris  
Edie Fletcher  
Deborah Haynes\*  
Georgia Jenkins†  
Alyssa Kinsey\*  
Jessica Miller  
Nancy Sanchez

Taylor Schumacher  
Jessica Shelley  
Mary Susan Spears  
April Spencer

### ALTO II

Kiana Afkami  
Kim Clarke†  
Greykell Dutton\*  
Ashlyn Frahm  
Avery Hendrickson  
Aline McKenzie  
Zoie Ohmes  
Apryl L. Pittman  
Deborah Pickner  
Stephanie Seager  
Melanie Silva\*  
Karen Swenson  
Carsen Walker\*  
Bree Whitmore

\* Member of Prima Volta  
† Section Representative



**Love to SING?**

Come visit us to see if TWCD is right for you!  
**Open Rehearsals**  
Monday, January 9 @ 7 PM

Sign up at [TWCD.org](https://www.twcd.org)

## UPCOMING DATES

December 7

WRR Caroling in the Arts District  
Noon | Listen at 101.1 FM

March 25

Voices of Women VIII  
7 pm | Moody Performance Hall

January 9

Open Rehearsal  
7 pm | Sammons Center for the Arts

May 5-7

Tapestry International Festival  
Vancouver, Canada

June

Annual Fundraiser Concert



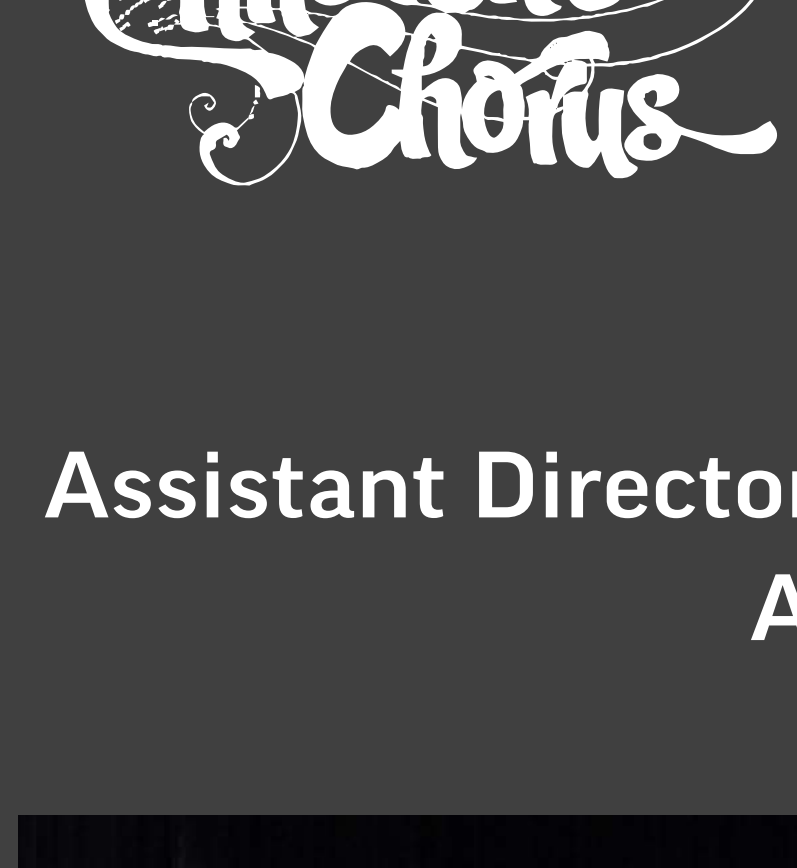
**JUDITH ABBOTT**  
Realtor

C. 214-228-9828  
O. 214-521-0044

[judithabbott.cbintouch.com](mailto:judithabbott.cbintouch.com)  
[judithabbottrealtor@gmail.com](mailto:judithabbottrealtor@gmail.com)

5950 Sherry Lane,  
Suite 200  
Dallas, TX 75225

## GUEST PERFORMERS



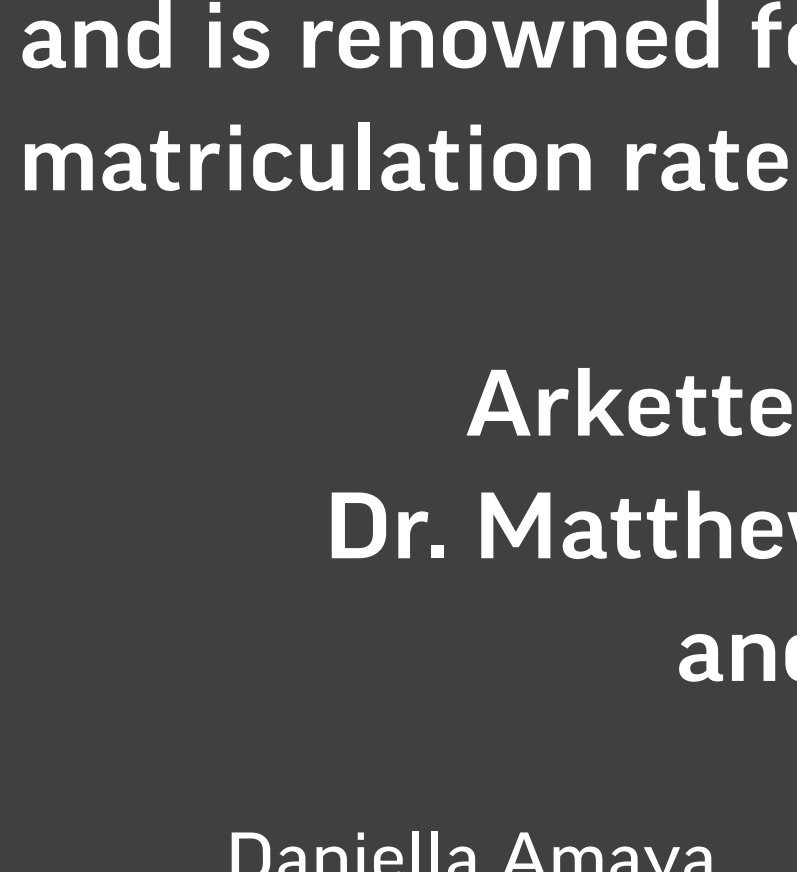
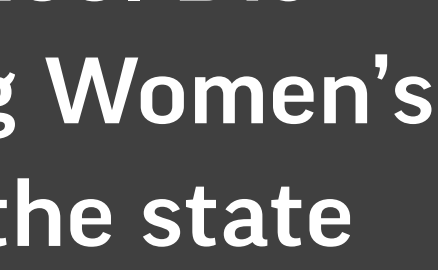
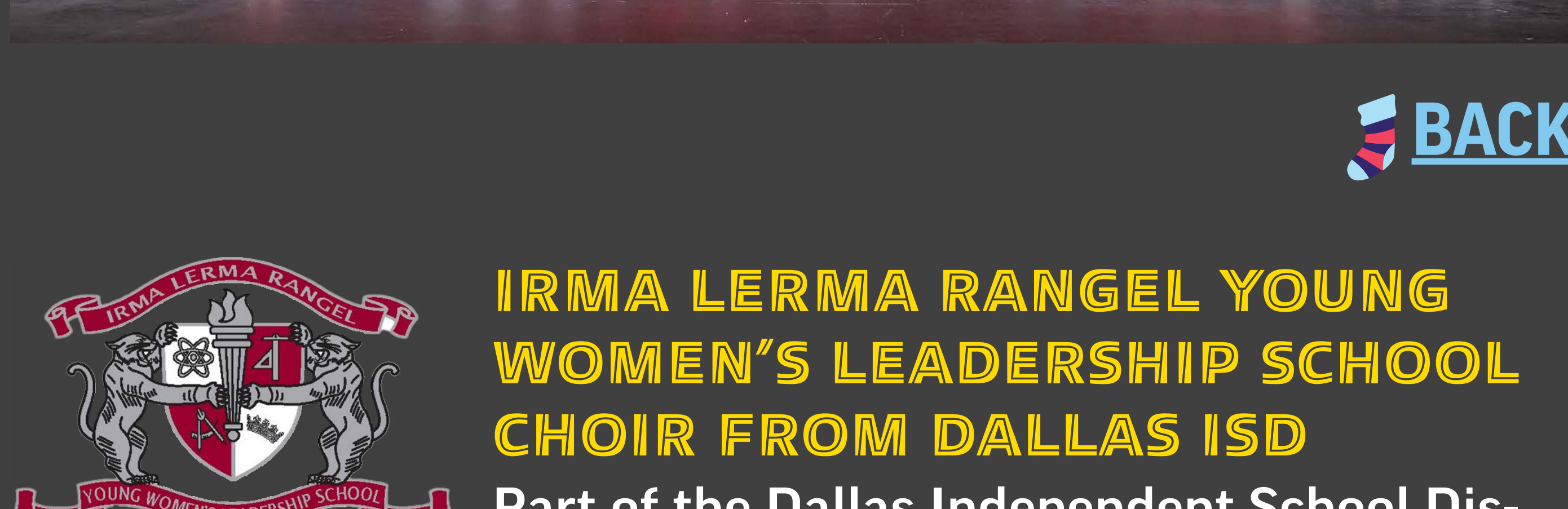
### MESQUITE CHILDREN'S CHORUS

The Mesquite Children's Chorus is an auditioned honor choir comprised of 4th- and 5th-grade students in Mesquite ISD.

Head Director: Julie Ward

Assistant Directors: Angel Hare, Dennis Sorto, and Laurel Webb

Accompanist: Lisa Buckmaster



### IRMA LERMA RANGEL YOUNG WOMEN'S LEADERSHIP SCHOOL CHOR FROM DALLAS ISD

Part of the Dallas Independent School District, the Irma Lerma Rangel Young Women's Leadership School is the first public all-girls school in the state and is renowned for its challenging coursework and high college matriculation rate.

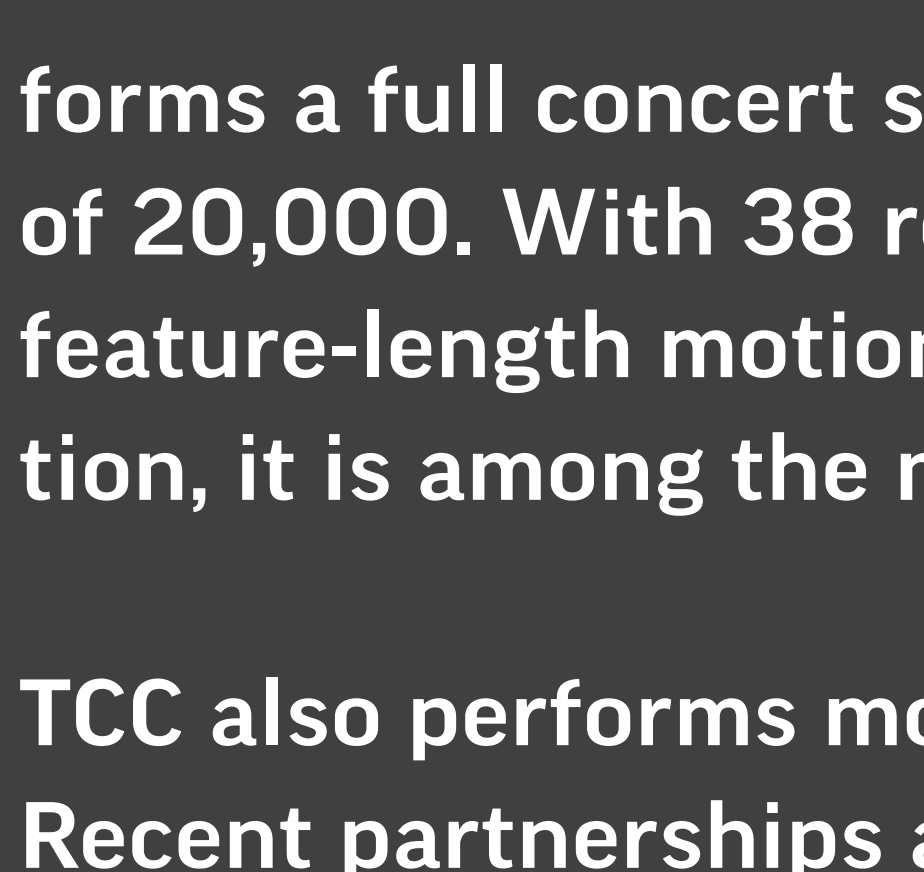
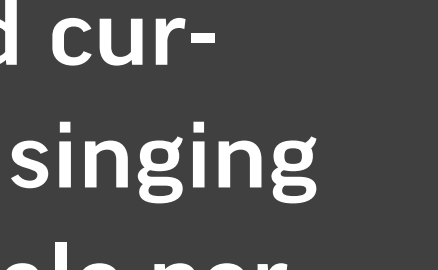
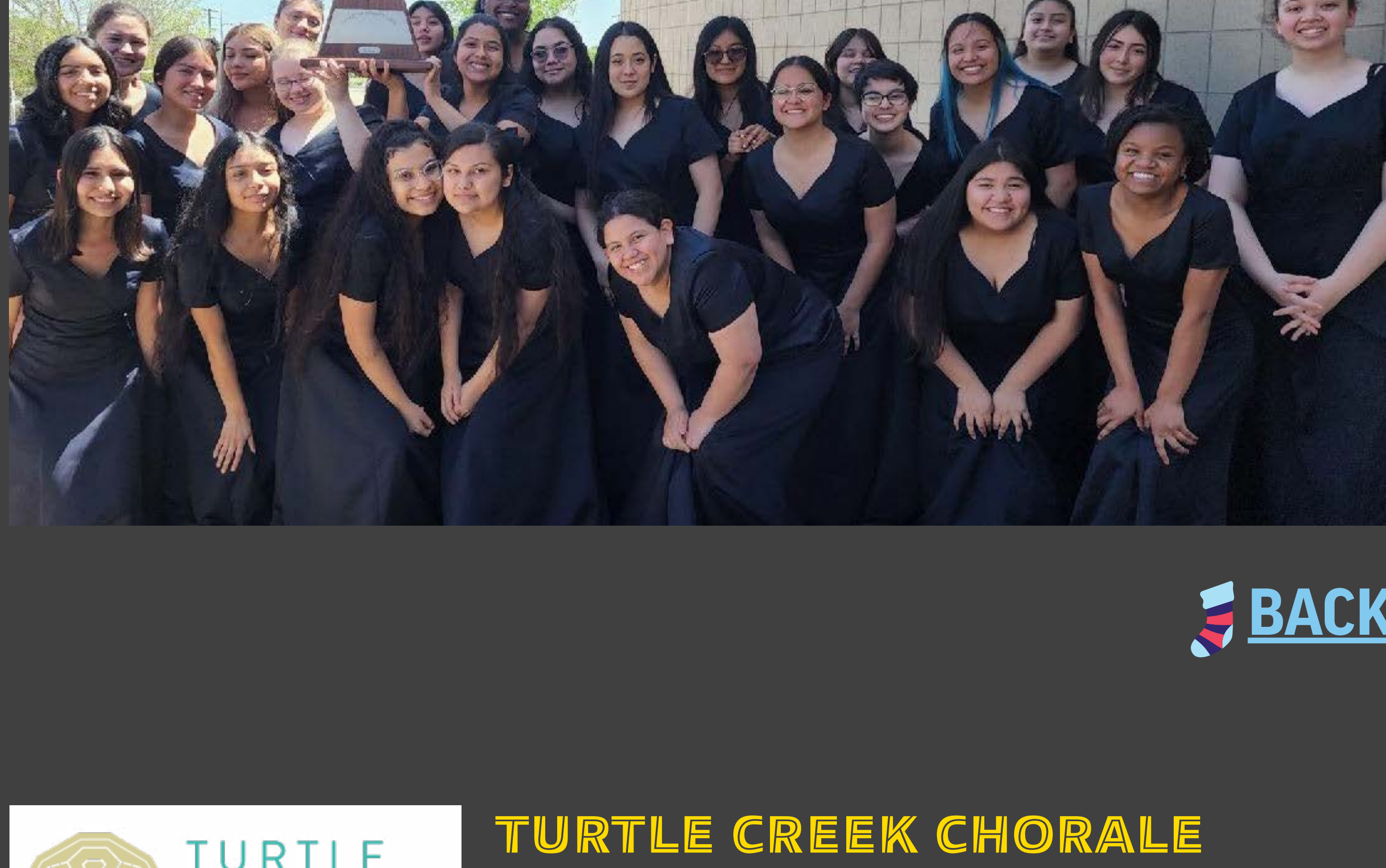
Arkette Baptiste, Director of Choral Studies

Dr. Matthew Edwards, Director of Choral, General, and Elementary Music, Dallas ISD

Daniella Amaya  
Ana Badillo  
Taya Banks  
Jenena Bottinelli  
Yatziri Chapa  
Yadira Chavez Reyes  
Isabella Chorley  
Estrella Cortes-Pedroza  
Jordyn Estrada  
Alina Fuentes

Joceline Garcia  
Alyssa Gomez  
Bianca Gomez  
Wendy Jaramillo  
Ashley Lopez Paredes  
Ashley Lopez  
Ashley Macias  
Leslie Macias  
Mariana Mares Solano  
April Martinez

Sophia Olivas  
Leslie Quintero-Garcia  
Daisy Retana  
Kimberly Rocha  
Leilani Saucedo  
Anna Torres  
Madeleine Tuck  
Nicole Velasquez Hernandez  
Grecian Zamudio Soto



### TURTLE CREEK CHORALE

Founded February 19, 1980, and currently featuring more than 200 singing members, the Turtle Creek Chorale performs a full concert series annually to live audiences in excess of 20,000. With 38 recordings and two commercially produced, feature-length motion picture documentaries in public distribution, it is among the most recorded men's choruses in the world.

TCC also performs more than 30 benefit appearances annually. Recent partnerships and collaborations include Lone Star Rides, LifeWalk, Genesis Women's Shelter, Children's Medical Center, Hope's Door, Parkland Hospital, and the American Airlines Sky Ball.

### LOVE IS ALL YOU NEED

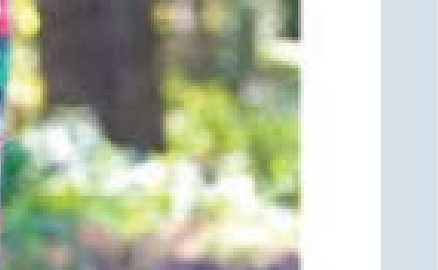
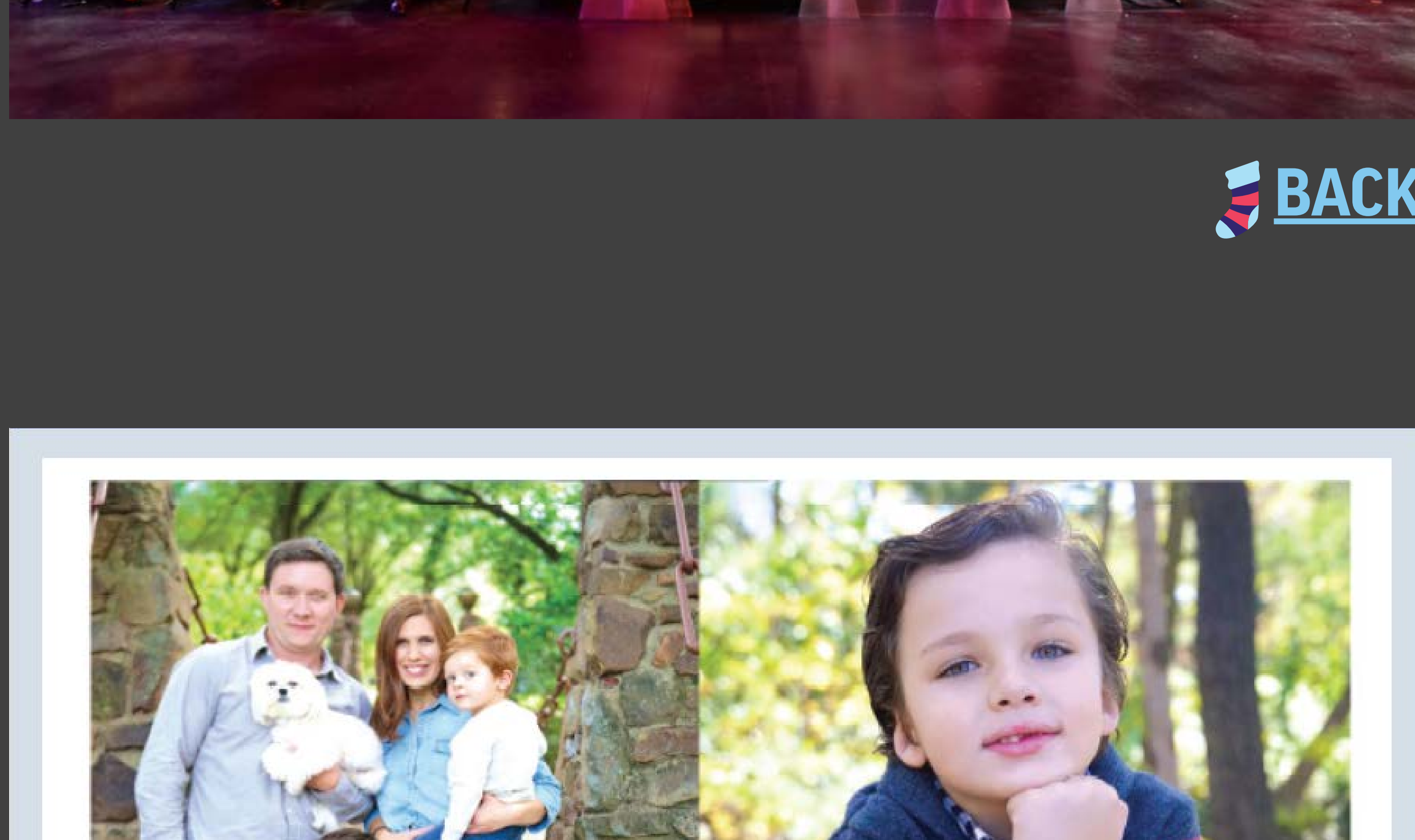
TCC's Annual Holiday Concert

December 17, 2022 | 2:30pm

First United Methodist Church  
Richardson

December 19, 2022 | 7:30pm

Meyerson Symphony Center  
Dallas, Texas



## FAMILY PHOTO FUNDRAISER

BENEFITTING the women's chorus of dallas

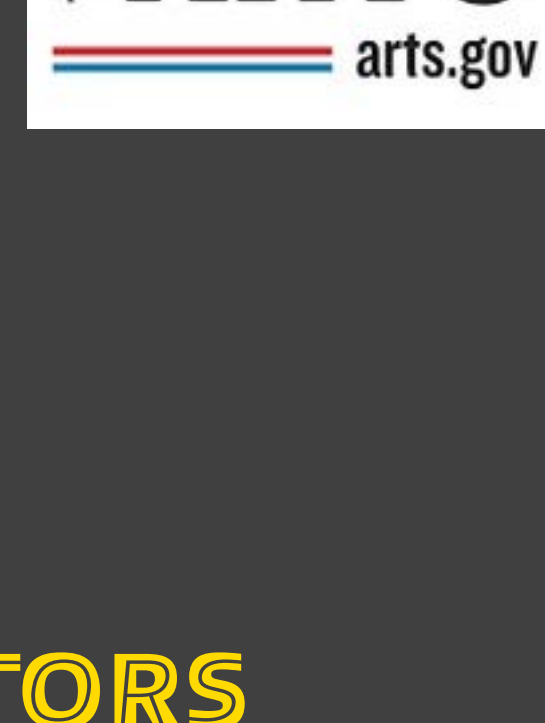
\$125 | 20 MIN SHOOT | 5 COMPLIMENTARY DIGITAL RETOUCED IMAGES  
PLEASE EMAIL [RADZ@RADZDPHOTOGRAPHY.COM](mailto:RADZ@RADZDPHOTOGRAPHY.COM) TO BOOK YOUR SHOOT



# THANK YOU!!!!

TWCD would like to thank the following for making this concert possible.

## OUR SPONSORS



## BOARD OF DIRECTORS

**Traci Stonum-Parker**  
*Chair*

**Lauren Daniel**  
*Chorus Liaison*

**Julie Hudgens-Haney**  
*Secretary*

**Rachel Williams**  
*Chorus Liaison*

**Catherine Thibodeau Land**  
*Treasurer*

## OFFICERS

**Lauren Daniel**  
*President*

**Tamara Moar**  
*New Member Liaison*

**Rachel Williams**  
*Vice-President*

**Avery Hendrickson**  
*Production Manager*

**Alyssa Kinsey**  
*Treasurer*

**Section Representatives**

**Greykell Dutton**  
*Music Manager*

*S1: Kim Foster*

**Katie Potere**  
*Social Director*

*S2: Ariel Wentworth*

*A1: Georgia Jenkins*

*A2: Kim Clarke*

## PRODUCTION SUPPORT

**Moody Performance Hall Staff**

**House Design**

**Stage Manager**  
*Brandy Townsend*

*Tamara Moar, Mary Susan Spears*

**Audio Engineer**  
*Michael Vazquez*

**Piano Tuning**  
*Smith Piano Services*

**Videographer**  
*Twelve09 Productions*

**Box Office**  
*TicketDFW*

**Photographer**  
*Radz D. Photography*

**Graphic Design**  
*Susan Lewis*

**Production Manager**  
*Avery Hendrickson*

**Social Media/Marketing**  
*Lauren Neaves*

**House Manager**  
*Julie Hudgens-Haney*

**Visual Design**  
*Radz Daswani, Crow Knorpp, Lauren Neaves, Stephanie Seager*

## VOLUNTEERS

Including but not limited to:

*Carrie Anspach  
Gloria Brown  
Susan Giesler Daniels  
Edie Fletcher  
Erin Giles  
Avery Hager  
Deborah Haynes  
Matthew Hudgens-Haney  
Crow Knorpp  
Crystal Koe*

*Leslie Moore  
Isaac Morrison  
Ashley Penov  
Deborah Pickner  
Anjali Rao  
Nancy Sanchez  
Stephanie Seager  
Chelcie Smith  
Tara Towbridge*



## ABOUT CAPITAL CLUB

TWCD relies strongly on the support of individual donors. The Capital Club is our special circle of sustaining donors at five levels. All donations are tax-deductible and can be charged on a monthly or annual basis. Starting at \$10/month, members receive a range of benefits, plus the profound thanks of everyone in our organization.

All donations are 100% tax-deductible and will be automatically charged to the credit or debit card of your choice on a monthly or annual basis.

## MONTHLY DONATION LEVELS & BENEFITS

### Friend (\$10)

- Member-only surveys and mailings
- Priority access to ticket sales
- Program recognition
- Complimentary CD on joining

- 20% off single concert tickets

### Partner (\$100)

- Supporter benefits, except
- 1 season ticket instead of 2 single tickets

### Contributor (\$20)

- Friend benefits, plus
- Access to pre-concert receptions

### Patron (\$150)

- Partner benefits, plus
- 1 additional season ticket (2)
- Gold rose donor pin

### Supporter (\$50)

- Contributor benefits, plus
- 2 tickets to any (1) season concert

### Sponsor (\$200+)

- Patron benefits, plus
- 1 additional season ticket (3)
- Additional benefits available

For more information or to register for the Capital Club, check the table in the lobby, visit our [Capital Club site](https://www.twcd.org/capital-club) or email [twcdoffice@twcd.org](mailto:twcdoffice@twcd.org).



## CAPITAL CLUB MEMBERS

### Conductor's Circle

Karen Swenson

### Sponsors

Greykell & Rick Dutton

### Patrons

Johannah Miller  
Catherine Thibodeau Land  
Susan Lewis  
Nancy Paine

### Partners

Dr. Sue Sherrod & Jude Hammett  
Diane Sloan  
Paul Walker

### Supporters

Aline McKenzie & Lydia Miller  
Shelley Sheridan

### Contributors

Maria Acon  
Judith Abbott  
Jo & Ralph Blackburn

Gloria Brown  
Edith Fletcher

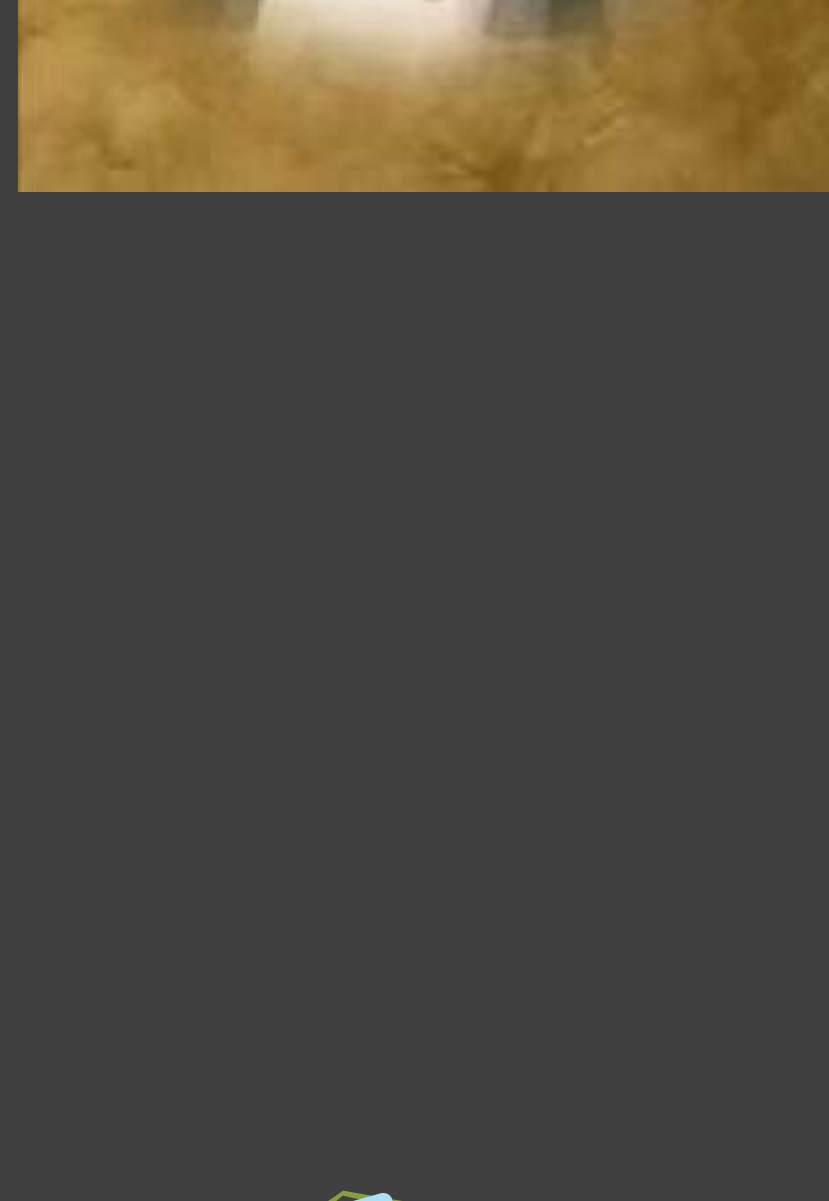
Isabel and Tammy Martinez (Dedicated to Edith Fletcher)  
Cara Monahan  
Nikki Rodgers  
Mary Susan Spears  
Suzy Watson

### Friends

BJ Anderson  
Kristy & Anthony Cisneros  
Harryette Ehrhardt  
Julie Fristensky  
Matthew & Julie Hudgens-Haney  
Samantha LeBeau  
Betsy Broder & David Wentworth (Dedicated to Ariel Wentworth)

### Divas (Singer CC Members)

Carrie Anspach  
Tami Moar  
Jessica Miller  
Apyrl Pittman  
Traci Stonum-Parker



## IN MEMORY

Julie Lee Sanders Cooley

May 14, 1961 - November 7, 2022

With heavy hearts, we say goodbye to long-time chorus member Julie Cooley. Julie sang with the chorus for many years in the A2 section and was a member of Vivacious! for several seasons. Her smile and hugs will be greatly missed.



## LET'S HEAR FROM YOU!

Thank you for attending our Holiday Hearts concert this afternoon. We'd love to hear your thoughts about the concert, music, venue, and our new digital program. Please take a minute to fill out [our survey](#) and give us your feedback.

