

TIMBERLOST VI

situate in
 SW4 of the NW4 of Section 10, T. 18 N., R. 3 E., B. M.,
 City of McCall, Valley County, Idaho
 Kerr Surveying -- McCall Idaho
 April, 1990

Book 1, Page 17, of Plots
 Inst. No. 174430

LEGEND

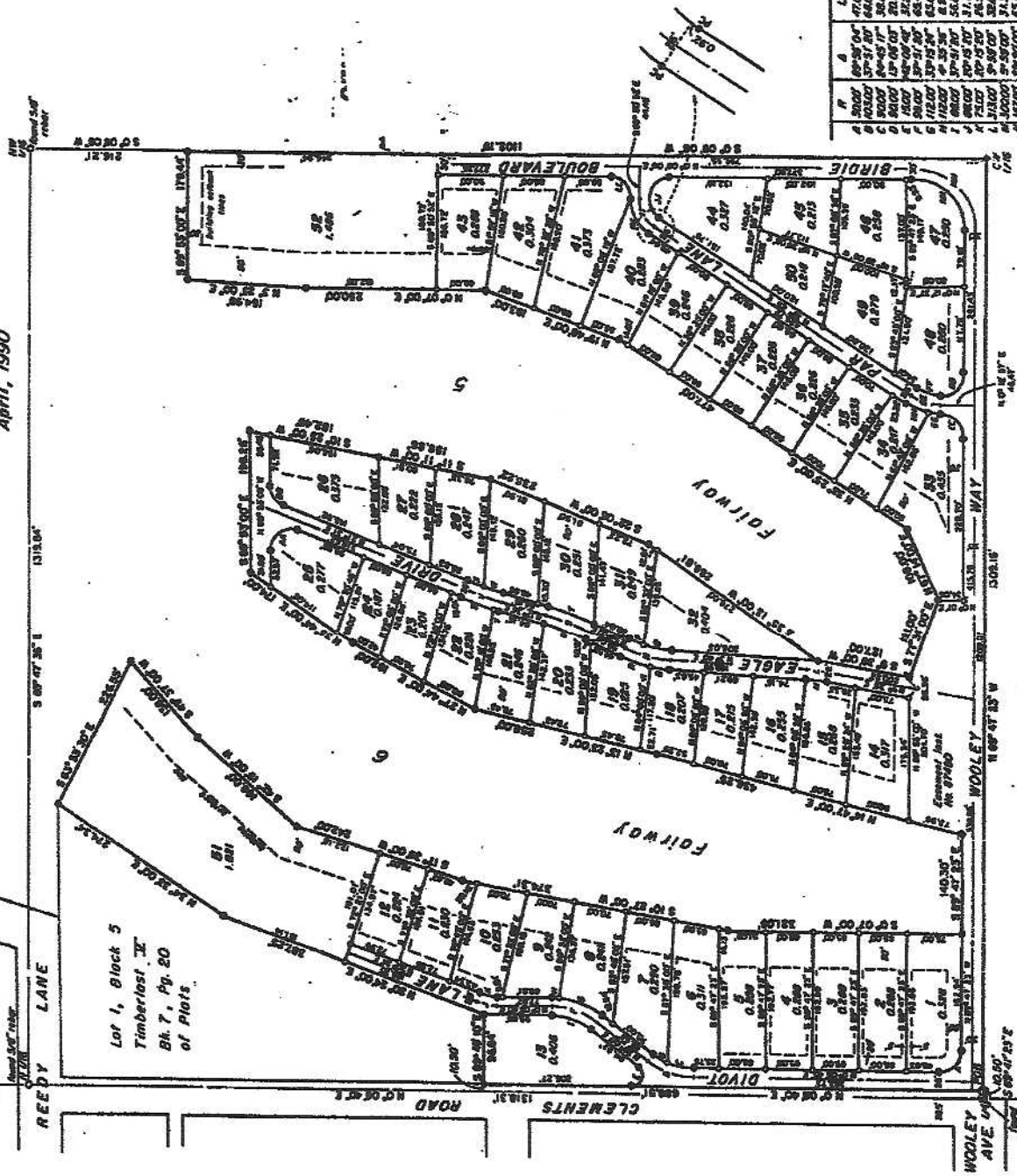
- -- 1/2" x 24" rebar w/plastic cap set
- -- 1/2" x 30" rebar w/plastic cap set
- -- Point of Beginning, set aluminum cap
- 1. Lot number and acreage
- Building setbacks - 20 ft. from street, 5 ft. side lines, 50 ft. from fairways.
- 12 ft. utility easements front and rear, centered on interior lines.
- Restrictive Covenants filed inst. No. _____



Sanitary Restrictions

No building or other work which will require a water supply or a sewage disposal facility for purposes using the premises where such water supply or sewage disposal facility is not available shall be permitted on any lot shown on this plan. No other restrictions shall be placed on the use of any lot shown on this plan except as may be provided in the State Record of Deeds by the State of Idaho. No other restrictions shall be placed on the use of any lot shown on this plan except as may be provided in the State Record of Deeds by the State of Idaho. No other restrictions shall be placed on the use of any lot shown on this plan except as may be provided in the State Record of Deeds by the State of Idaho.

All roads within this platting are private.
 This plat is subject to compliance with I.C. Section 31-3805. No irrigation water shall be supplied to any lot hereon.



CURVE TABLE

Curve No.	Angle	Radius	Chord	Area	Perimeter
1	45.00°	100.00'	70.71'	1,570.80	314.16
2	45.00°	100.00'	70.71'	1,570.80	314.16
3	45.00°	100.00'	70.71'	1,570.80	314.16
4	45.00°	100.00'	70.71'	1,570.80	314.16
5	45.00°	100.00'	70.71'	1,570.80	314.16
6	45.00°	100.00'	70.71'	1,570.80	314.16
7	45.00°	100.00'	70.71'	1,570.80	314.16
8	45.00°	100.00'	70.71'	1,570.80	314.16
9	45.00°	100.00'	70.71'	1,570.80	314.16
10	45.00°	100.00'	70.71'	1,570.80	314.16
11	45.00°	100.00'	70.71'	1,570.80	314.16
12	45.00°	100.00'	70.71'	1,570.80	314.16
13	45.00°	100.00'	70.71'	1,570.80	314.16
14	45.00°	100.00'	70.71'	1,570.80	314.16
15	45.00°	100.00'	70.71'	1,570.80	314.16
16	45.00°	100.00'	70.71'	1,570.80	314.16
17	45.00°	100.00'	70.71'	1,570.80	314.16
18	45.00°	100.00'	70.71'	1,570.80	314.16
19	45.00°	100.00'	70.71'	1,570.80	314.16
20	45.00°	100.00'	70.71'	1,570.80	314.16
21	45.00°	100.00'	70.71'	1,570.80	314.16
22	45.00°	100.00'	70.71'	1,570.80	314.16
23	45.00°	100.00'	70.71'	1,570.80	314.16
24	45.00°	100.00'	70.71'	1,570.80	314.16
25	45.00°	100.00'	70.71'	1,570.80	314.16
26	45.00°	100.00'	70.71'	1,570.80	314.16
27	45.00°	100.00'	70.71'	1,570.80	314.16
28	45.00°	100.00'	70.71'	1,570.80	314.16
29	45.00°	100.00'	70.71'	1,570.80	314.16
30	45.00°	100.00'	70.71'	1,570.80	314.16
31	45.00°	100.00'	70.71'	1,570.80	314.16
32	45.00°	100.00'	70.71'	1,570.80	314.16
33	45.00°	100.00'	70.71'	1,570.80	314.16
34	45.00°	100.00'	70.71'	1,570.80	314.16
35	45.00°	100.00'	70.71'	1,570.80	314.16
36	45.00°	100.00'	70.71'	1,570.80	314.16
37	45.00°	100.00'	70.71'	1,570.80	314.16
38	45.00°	100.00'	70.71'	1,570.80	314.16
39	45.00°	100.00'	70.71'	1,570.80	314.16
40	45.00°	100.00'	70.71'	1,570.80	314.16
41	45.00°	100.00'	70.71'	1,570.80	314.16
42	45.00°	100.00'	70.71'	1,570.80	314.16
43	45.00°	100.00'	70.71'	1,570.80	314.16
44	45.00°	100.00'	70.71'	1,570.80	314.16
45	45.00°	100.00'	70.71'	1,570.80	314.16
46	45.00°	100.00'	70.71'	1,570.80	314.16
47	45.00°	100.00'	70.71'	1,570.80	314.16
48	45.00°	100.00'	70.71'	1,570.80	314.16
49	45.00°	100.00'	70.71'	1,570.80	314.16
50	45.00°	100.00'	70.71'	1,570.80	314.16
51	45.00°	100.00'	70.71'	1,570.80	314.16
52	45.00°	100.00'	70.71'	1,570.80	314.16
53	45.00°	100.00'	70.71'	1,570.80	314.16
54	45.00°	100.00'	70.71'	1,570.80	314.16
55	45.00°	100.00'	70.71'	1,570.80	314.16
56	45.00°	100.00'	70.71'	1,570.80	314.16
57	45.00°	100.00'	70.71'	1,570.80	314.16
58	45.00°	100.00'	70.71'	1,570.80	314.16
59	45.00°	100.00'	70.71'	1,570.80	314.16
60	45.00°	100.00'	70.71'	1,570.80	314.16
61	45.00°	100.00'	70.71'	1,570.80	314.16
62	45.00°	100.00'	70.71'	1,570.80	314.16
63	45.00°	100.00'	70.71'	1,570.80	314.16
64	45.00°	100.00'	70.71'	1,570.80	314.16
65	45.00°	100.00'	70.71'	1,570.80	314.16
66	45.00°	100.00'	70.71'	1,570.80	314.16
67	45.00°	100.00'	70.71'	1,570.80	314.16
68	45.00°	100.00'	70.71'	1,570.80	314.16
69	45.00°	100.00'	70.71'	1,570.80	314.16
70	45.00°	100.00'	70.71'	1,570.80	314.16
71	45.00°	100.00'	70.71'	1,570.80	314.16
72	45.00°	100.00'	70.71'	1,570.80	314.16
73	45.00°	100.00'	70.71'	1,570.80	314.16
74	45.00°	100.00'	70.71'	1,570.80	314.16
75	45.00°	100.00'	70.71'	1,570.80	314.16
76	45.00°	100.00'	70.71'	1,570.80	314.16
77	45.00°	100.00'	70.71'	1,570.80	314.16
78	45.00°	100.00'	70.71'	1,570.80	314.16
79	45.00°	100.00'	70.71'	1,570.80	314.16
80	45.00°	100.00'	70.71'	1,570.80	314.16
81	45.00°	100.00'	70.71'	1,570.80	314.16
82	45.00°	100.00'	70.71'	1,570.80	314.16
83	45.00°	100.00'	70.71'	1,570.80	314.16
84	45.00°	100.00'	70.71'	1,570.80	314.16
85	45.00°	100.00'	70.71'	1,570.80	314.16
86	45.00°	100.00'	70.71'	1,570.80	314.16
87	45.00°	100.00'	70.71'	1,570.80	314.16
88	45.00°	100.00'	70.71'	1,570.80	314.16
89	45.00°	100.00'	70.71'	1,570.80	314.16
90	45.00°	100.00'	70.71'	1,570.80	314.16
91	45.00°	100.00'	70.71'	1,570.80	314.16
92	45.00°	100.00'	70.71'	1,570.80	314.16
93	45.00°	100.00'	70.71'	1,570.80	314.16
94	45.00°	100.00'	70.71'	1,570.80	314.16
95	45.00°	100.00'	70.71'	1,570.80	314.16
96	45.00°	100.00'	70.71'	1,570.80	314.16
97	45.00°	100.00'	70.71'	1,570.80	314.16
98	45.00°	100.00'	70.71'	1,570.80	314.16
99	45.00°	100.00'	70.71'	1,570.80	314.16
100	45.00°	100.00'	70.71'	1,570.80	314.16

CP&F Plat No. 9710

CP&F Plat No. 9710