

**We are one of the  
premier warehouse  
and distribution  
installation companies  
in the UK, covering  
mechanical and  
electrical installations.**

## GET IN TOUCH

Phone:  
01733 855153

Email:  
[sales@lifecyclev.co.uk](mailto:sales@lifecyclev.co.uk)

Office address:  
Lifecycle Development Ltd  
Bakewell Road  
Brightfield Business Hub  
Peterborough  
England  
PE2 6XU

[www.lifecyclev.co.uk](http://www.lifecyclev.co.uk)





**We combine  
warehouse and  
storage installations  
with electrical and  
mechanical  
installations**

## **OUR RACKING INSTALLATION SERVICE:**

- A competitively priced alternative to your supply chain whilst still ensuring quality and health and safety targets
- Works along side racking vendors to outsource installation projects to autonomously deliver within strict H&S and quality parameters
- Our SEMA inspection qualified services ensure you meet legislative or health & safety obligations
- All of our team is trained to at least SEIRS foundation level as approved by SEMA
- We can operate client sites under CDM regulations.

## **WHY WORK WITH US?**

### **We are a one stop shop**

Through our engineering background and ability to offer racking, electrical, mechanical and controls installation under one roof, we offer true integrated services.

### **We are diligent**

In accordance with our CHAS accreditation, you could audit our health & safety including our RAMS, toolbox talks, awareness training, qualifications, licenses, insurances etc at any time. We encourage it.

At the end of every job we give all O&M manuals and any installation documents updated to as built along with any legislative test paperwork.

# WHY WORK WITH US?

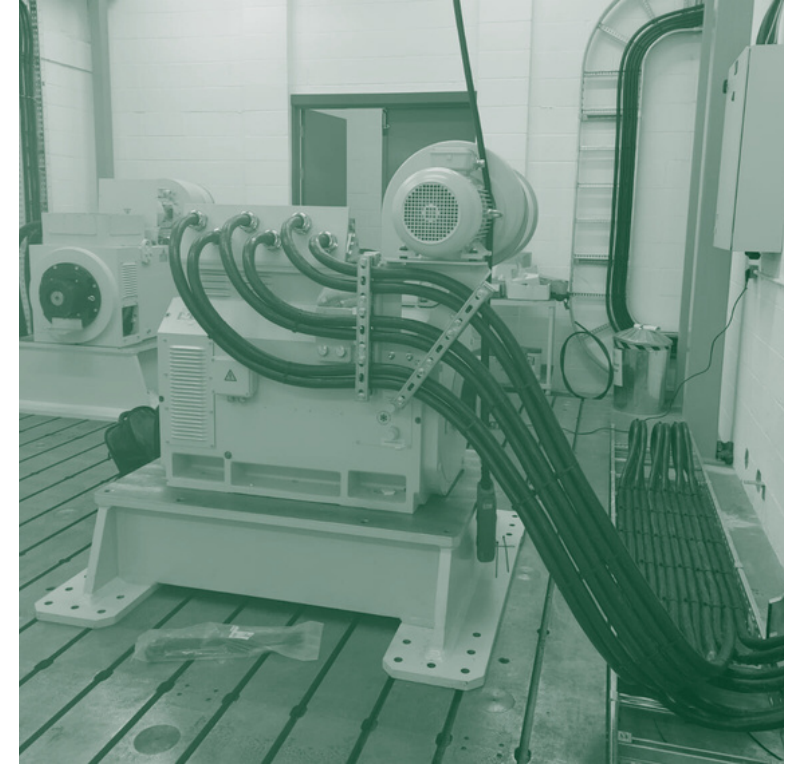
## We are independent

We are completely vendor agnostic allowing us to work with any vendors suitable for clients. We do not have any products to sell you or your clients.

## We deliver on service

We provide a best in class service to clients and every one of our team is well trained, professional and has pride in their work.

**NICEIC registered, we offer full electrical installation services from site supply onwards with fully certificated test documentation**



## OUR ELECTRICAL INSTALLATION SERVICE:

- Our service includes sub stations and switchgear, power distribution and major equipment installation including device connection such as dynamometers and associated drives, battery emulators and resistive and regenerative load banks.
- Alongside industrial electrical engineering and installations for manufacturing facilities, we also offer installation of specialist cabling covering high power/frequency applications, high EMC risk installations, fibre optic communications and IT infrastructure.



**We offer a cost effective and high quality mechanical installation service across sectors**

## **WHY WORK WITH US?**

### **We take pride in our work**

We don't just 'sling it together and walk away', we pride ourselves in our service before, during and after the job is done.

We ensure every single one of our customers feel valued.

## **OUR MECHANICAL INSTALLATION SERVICE**

- We are experts in ductwork which we complete in full compliance with DW144
- We can get your manufacturing equipment or even your full facility working quickly, efficiently and cost effectively
- We can dispose of old or redundant machines and equipment that have been removed from service
- We know effective climate control is essential for your production it helps to keep your staff safe, happy, and healthy as they work. We make this easy for you.

### **We are experts**

Our customers also rely on our engineering team to provide ongoing support for maintenance or fault finding, as well as technical help during project planning phases to explore possibilities and create cost effective solutions to their requirements.

# WHY WORK WITH US?

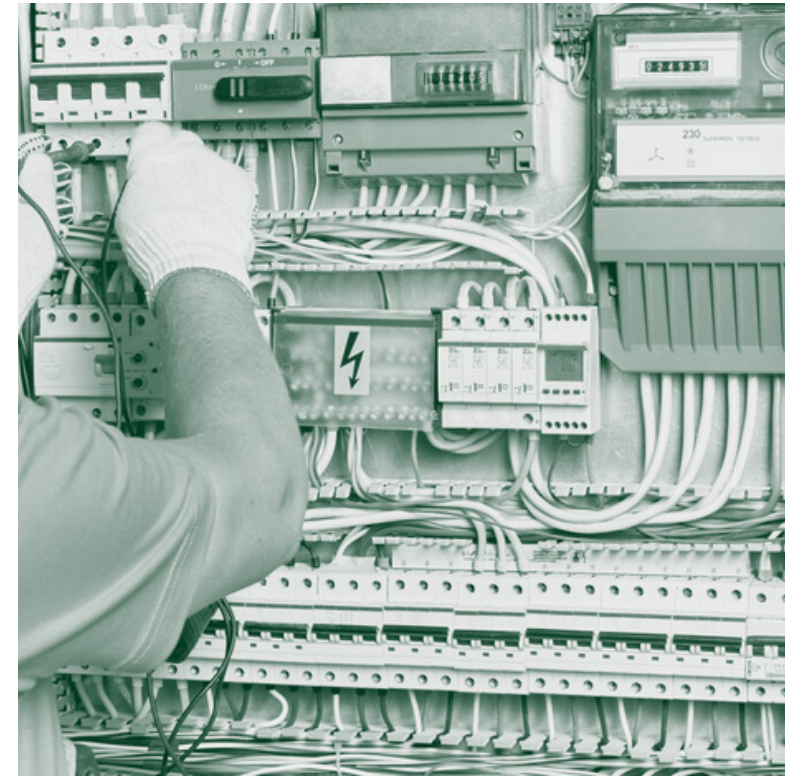
## We can REALLY manage a site

When working with an installation team, we know how important a well run site is. That's why we can deliver under CDM regulations.

## Health and Safety is at our core

We know the impact to everyone when something goes wrong on site. That's why we have engaged industry leading consultants, Peninsula Business Services, as our training, recording and general consultants.

**We provide a full controls installation and engineering service, covering controls and safety system design, panel building and commissioning services, with a full installation service.**



## OUR CONTROLS SERVICE:

- Schematic designs are done in EPLAN or AutoCAD according to the customer standards, and can be done in accordance with site standards, IEC/EN 60375 or ANSI Y32.9 to suit customer requirements.
- For more than 20 years our expert engineering team have manufactured high quality customised and series production cabinets.
- We provide a free site visit to discuss your control system requirements and quotations to support your enquiries.