



Bankshot BankBoard Installation

WARNING! - Failure to follow proper installation procedures can result in damage to BankBoards and possible injury to personnel. Read and understand all installation instructions before proceeding.

Provided Hardware

- BankBoards (see layout list and instructions for type and quantities)
- Rims
- Rim Mounting Hardware
 - Washers
 - Bolts
 - Nuts
- Socket set screws
 - 1/2 x 3/4 course (13) thread, hex head 1/4
- Galvanized Pole Caps

Tools You Will Need

- Lift or Ladders
- Pipe Clamp or Pliers (Pictured is a 10 inch Welding Pipe Plier, Locking C-clamp.
- Drill and 3/8 inch bit suitable for hard metal.
- 1/4 inch Hex wrench or driver
- Nonpermanent thread locker (Loc-tite Blue or Equivalent)
- Punch
- Hammer
- Rubber Mallet
- Safety Glasses, gloves, and gear as needed for working on lift/ladders

Install only on properly set and installed 2 inch (2 $\frac{3}{8}$ " OD) Schedule 40 round galvanized steel tube. See installation diagrams and pole schedule for proper installation.

Measure and place clamp/pliers on the pole for the board to rest on during installation.

Use the rim heights specified on the Installation Plans for each station to set the proper clamp height.



Lower board over pole.

This is best with two people, using a lift.

Adjust the height of the clamp as needed so the board is at the correct rim height.

Verify that the angle of the board to the X-line and Center line matches the provided installation diagrams for each station.



Each board will require 2 Socket set screws (provided) for installation.

Socket Set Screws

$\frac{1}{2}$ x $\frac{3}{4}$ course (13) thread, hex head $\frac{1}{4}$



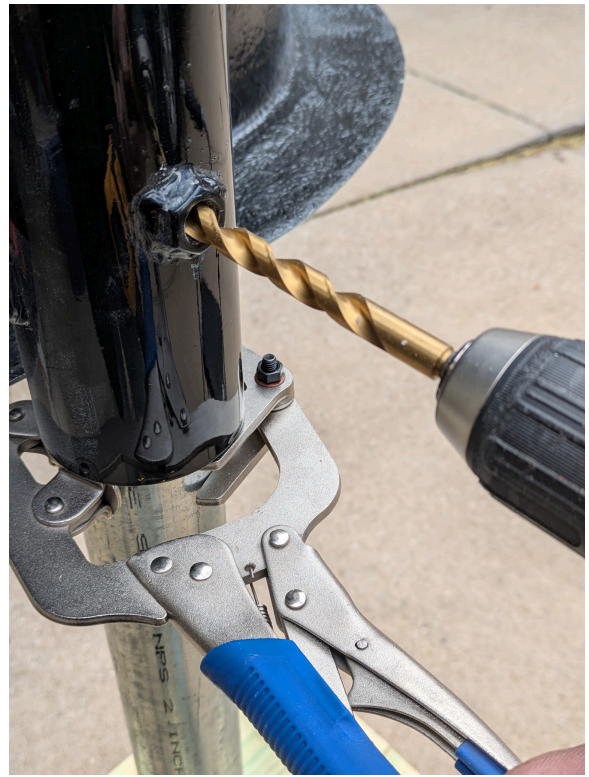
Use a punch to mark the center of the hole for the set screw on the mounting tube.

Repeat for both set nuts on the mounting tube.



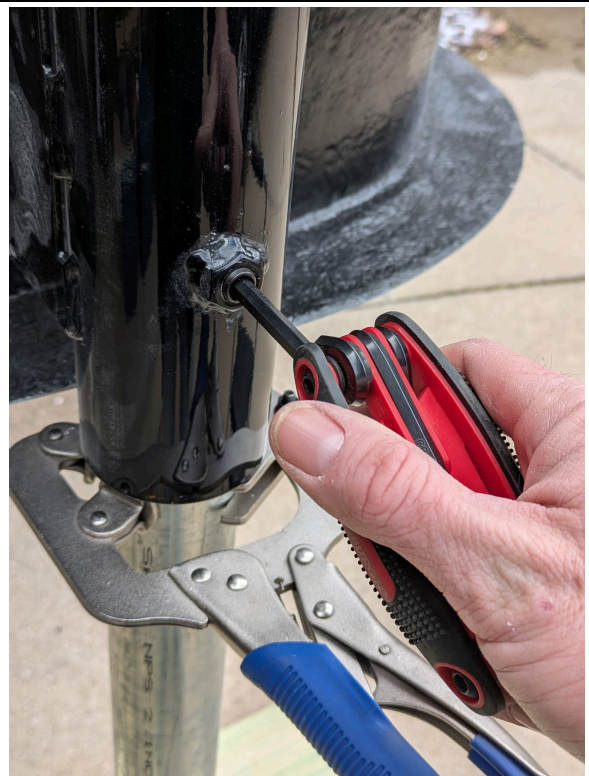
Drill a $\frac{3}{8}$ inch hole through the pole.

NOTE: Take special care not to damage the threads on the mounting tube!



Apply a non-permanent thread locker to the threads of the set screw.

Insert and tighten fully using a $\frac{1}{4}$ inch hex wrench or driver.



The Set Screw should be tightened until it is flush or slightly below the surface of the mounting nut.

Repeat for both set screws on each board.

Once properly set there should be no movement of the board(s) on the pole.





Install Rims. See directions from Rim Manufacturer attached)



Install Pipe Caps on tops of poles.
Use a rubber mallet to set in the cap to
avoid damaging caps.



STATIONARY FRONT MOUNT GOALS
Models 39WO, 4039, 3942, 240, 140, 7550, 8550
PN: 301751223 Installation and Maintenance Instructions



WARNING

Failure to follow proper installation procedures can result in damage to goal and possible injury to personnel.
Read and understand all installation instructions before proceeding.

TOOLS REQUIRED:

(2) 9/16" wrenches, level, step ladder

INSTALLATION:

- 1) Remove goal and hardware from box and inspect for shipping damage. Remove the four 3/8" hex bolts from the hardware bag along with four flat washers, lock washers and nuts.
- 2) Install the hex bolts into the universal mounting slots in the goal back plate and through the mounting holes in the board. Secure by installing flat washers, lock washers and nuts onto the hex bolts.
- 3) Check goal for level then torque the four 3/8-16 nuts to 15 – 20 ft-lbs.
- 4) Install the net.

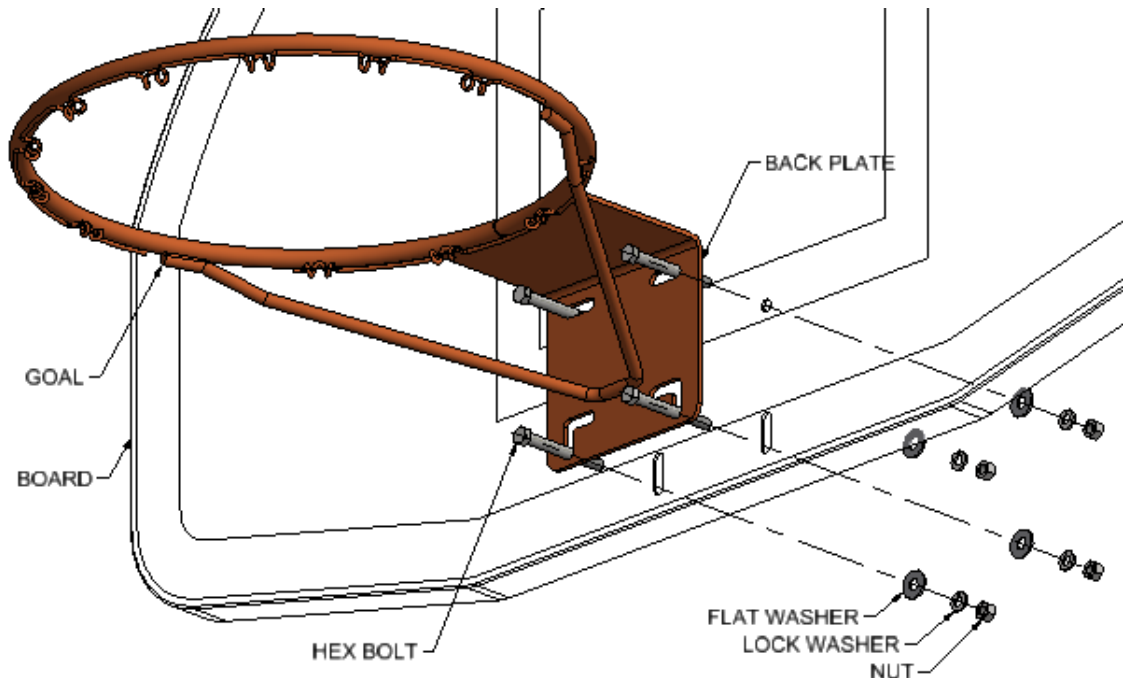


Fig 1: 39WO goal shown, other models mount the same although they may have slightly different features.

MAINTENANCE:

- 1) Annually check goal for damaged or rusting parts. Touch up paint as required. Replace goal if damaged parts are noted.
- 2) Annually check bolt torque.



Performance Sports Systems
800-848-8034
info@perfsports.com

Gared Sports
800-325-2682
CustomerService@garedsports.com

