

avenli



2021

Spas that free your mind

avenli

SHANGHAI JILONG PLASTIC PRODUCTS CO.,LTD

3F & 6F, Tower A1, No.2555 Xiupu Road, Kangqiao,  
Pudong Area, Shanghai, 201315, P.R.China

Tel: +86-21-58942200

Fax: +86-21-58940305/58940434

E-mail: info@jilong.com

Web: www.jilong.com / www.avenli.com



© 2018 Shanghai Jilong Plastic Products Co., Ltd. ALL rights reserved. Printed in China.





**AVENLI SPAS THAT FREE YOUR MIND!**

Our reliable, high-performance spas are designed for comfort, efficient energy use, and simple maintenance so you can enjoy the full wellness benefits that come from making a hot tub part of your daily routine. Just a quick 20-30-minute dip counts as exercise...and so much more.

**COMFORT**

The core of Avenli SPAs is Comfort. Dual massage tech helps you stay relaxed and seated even when enjoying powerful jets. Scientifically positioned massage melts your tension away. And related supporting accessories enhance the comfort experience.

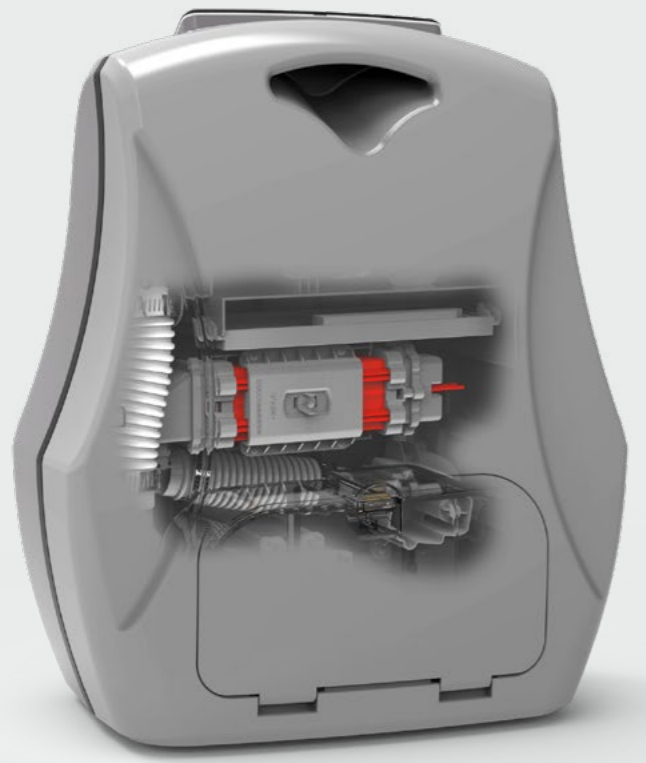
**INNOVATION**

Our SPAs are carefully crafted with the details to awaken the senses. From rich patterns, various series to complete accessories, every element is intended to calm and delight.

**PERFORMANCE**

To make the most of your spa, it needs to operate at a consistently high level. Each SPA is engineered and built with the strictest attention to quality and efficiency. Our commitment is your assurance of reliable, energy-efficient performance for years.

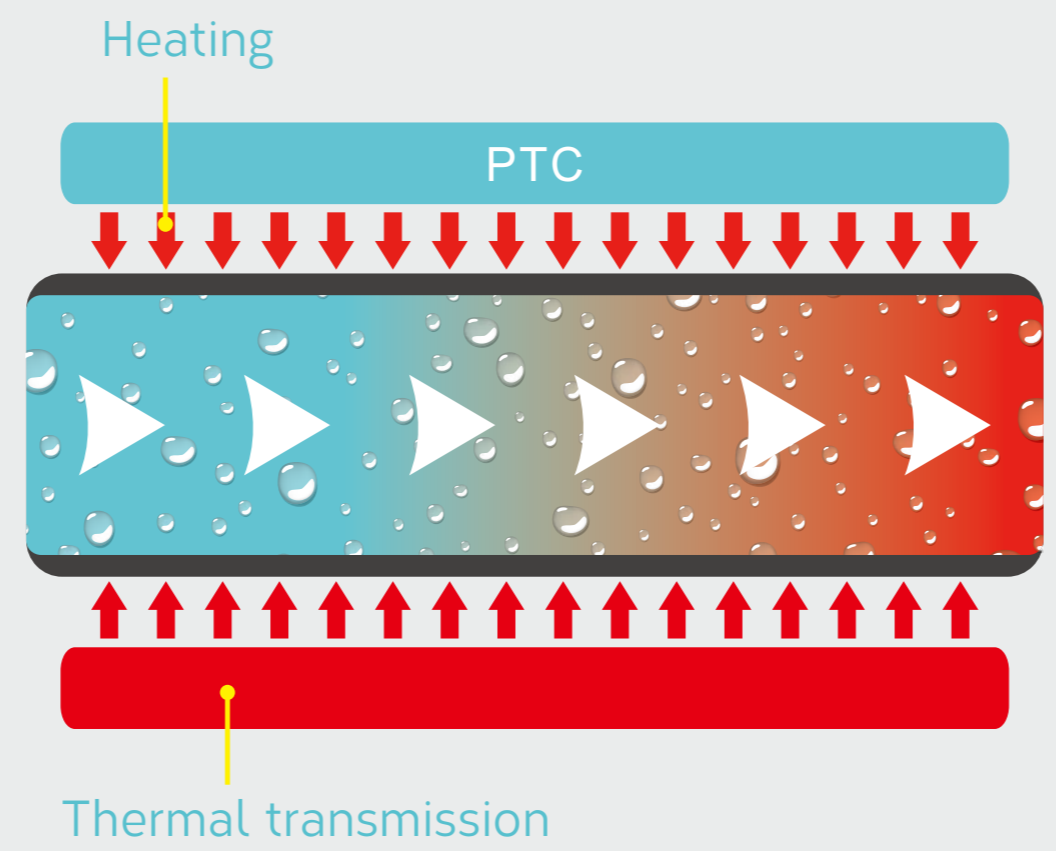




## Dual Heating System (DHS)

To provide advanced enjoyment, our spa applies a unique dual heating system. The water is filtered and double-heated by the pump with PTC (Positive Temperature Coefficient) and Hydroelectric separation Structure (HES), and then pumped into the SPA. It ensures rapidly heating, stable temperature control, and safety protection.

## HES TECHNOLOGY Hydroelectric Separation

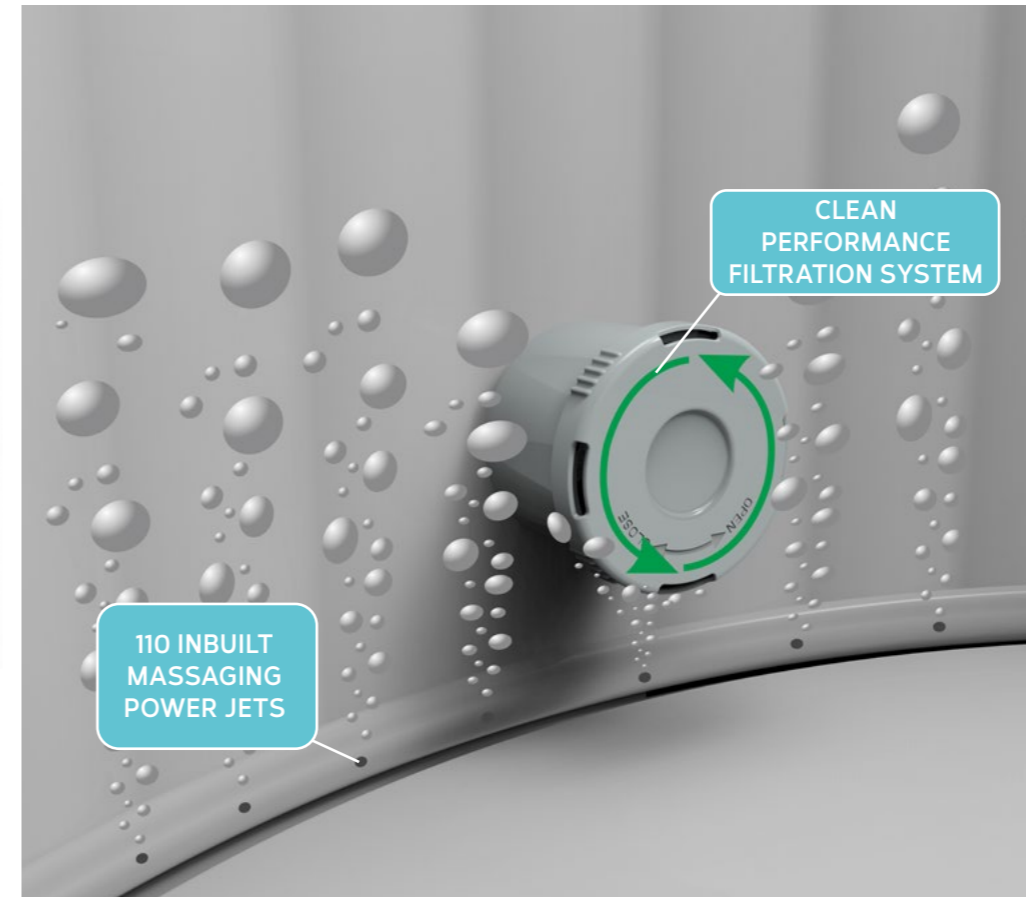
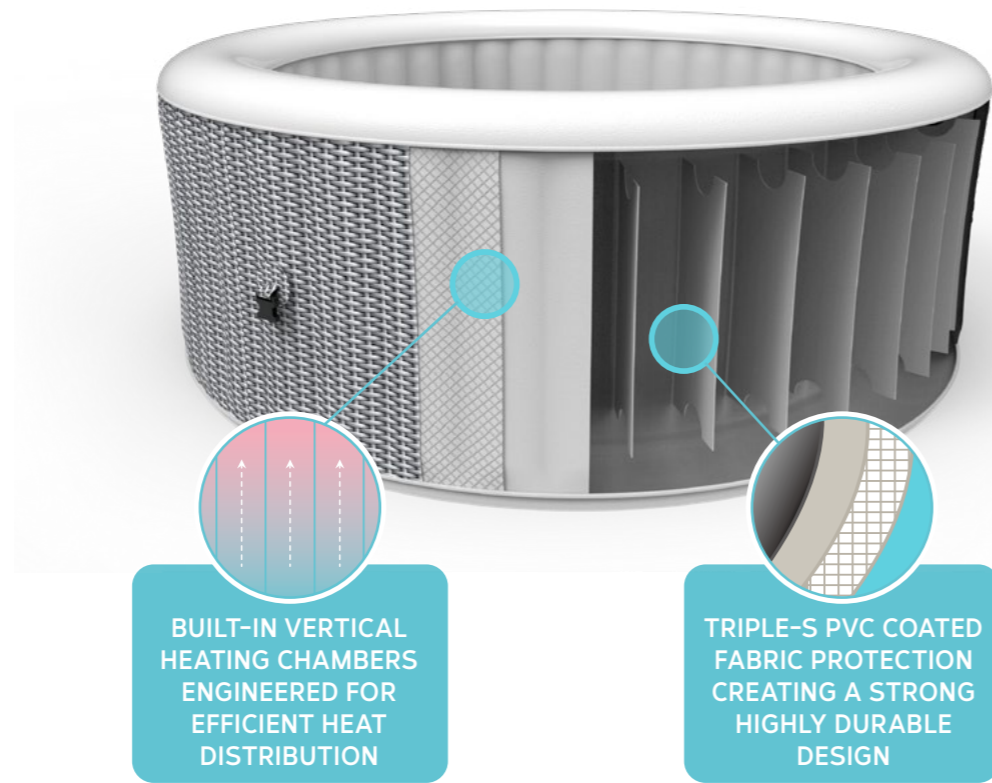
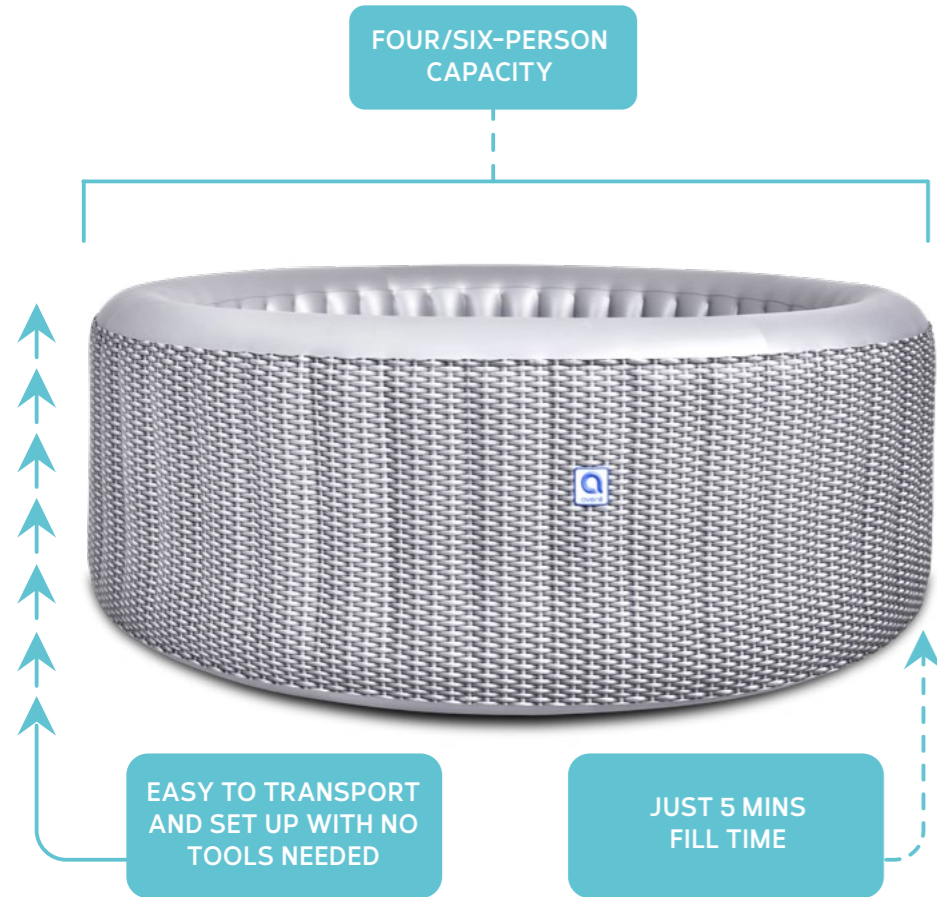


- Fast**  
High power  
Heat Up Rapidly
- Stable**  
Constant Temperature control
- Safety**  
Waterproof



## Fresh, Easy Water Treatment

Avenli Fresh system not only ensures the quality of the water, it produces sparkling water and enjoys the massage experience brought by multiple jets. It also equals less maintenance. By effectively combining high-strength 3-ply materials, front and rear-end filtration, dual heating system, antibacterial materials, and special energy-saving technologies, you can spend less time and effort on maintenance. Moreover, you can achieve fresh and vibrant water with this complete, hands-free option.



Safety Lock



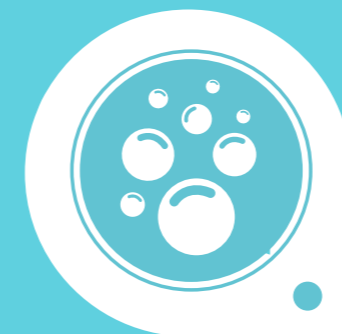
Anti-bacterial



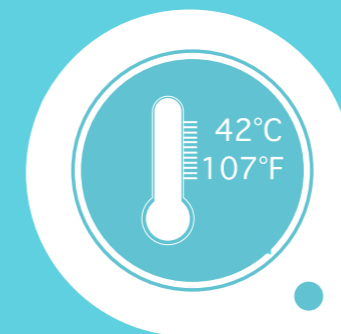
3-ply Construction



Filter Cartridge



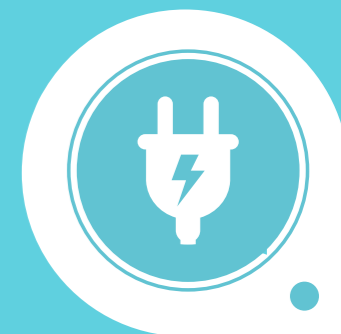
AirBubble system



Max. temperature



Energy saving



Rated Power



# CONTENT

## Rotorua Series

○ Bali Spa .....	06
○ London Spa .....	08
○ xxxxxxx Spa .....	10
○ Venice-Grey Spa .....	14
○ Nice-Coffee Spa .....	16
○ Vancouver Spa .....	16

## Rotorua Premium Series

○ Milan Spa .....	06
◇ California Spa .....	08

## Swift Current Series

◇ Dubai Spa .....	10
○ Osaka Spa .....	08
○ Saipan Spa .....	10

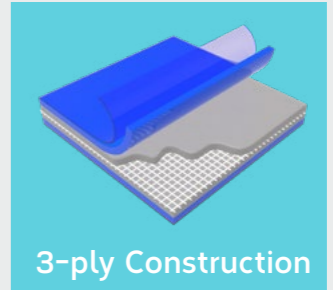




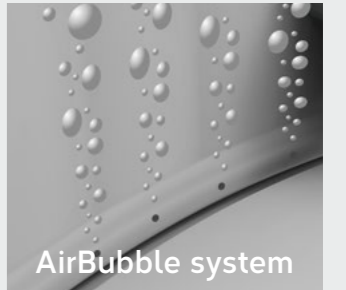


# ROTORUA SERIES

Puncture-resistant 3-ply laminated material with fashionable plain color exterior offer a premium decoration to your spaces .



3-ply Construction



AirBubble system



# BALI SPA

- Sturdy I-beam construction
- 3-ply reinforce wall offering superior strength and durability.
- Fashionable beige exterior.
- Insulated top cover and floor protector included.
- Max temperature 42°C /108°F
- 105 all-surrounding air jets
- Digital control pannel
- Waterproof PCB



Air Bubbles



Dual Heating System



Lockable Cover



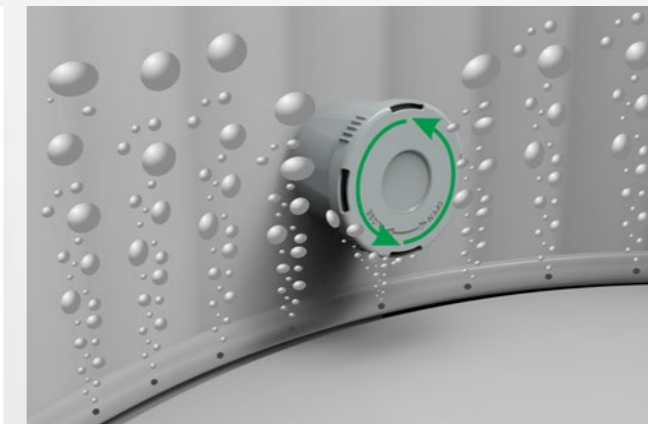
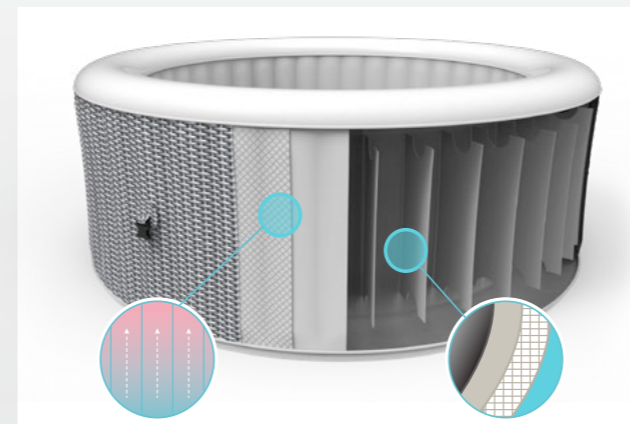
Base Protector



Filter Cartridge



Item No	Height	Power Rated	System Flow Rate	Inner/Outer Diameter	Bubble Jet Holes	Seating Capacity
17623EU	70cm (27.6")	220-240V 50HZ, 2040w	686L (181gal)	Φ125cm/Φ165cm (Φ49.2"/Φ65")	105	3
17623US	70cm (27.6")	110-120V 60HZ ,1380w	686L (181gal)	Φ125cm/Φ165cm (Φ49.2"/Φ65")	105	3





# LONDON SPA

- Sturdy I-beam construction
- 3-ply reinforce wall offering superior strength and durability.
- Fashionable beige exterior.
- Insulated top cover and floor protector included.
- Max temperature 42°C /108°F
- 105 all-surrounding air jets
- Digital control panel
- Waterproof PCB



Air Bubbles



Dual Heating System



Lockable Cover



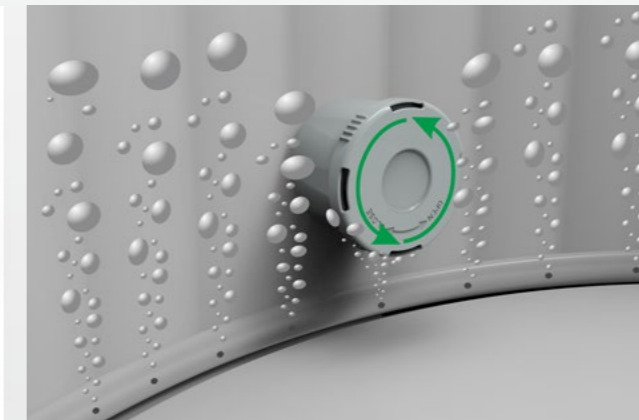
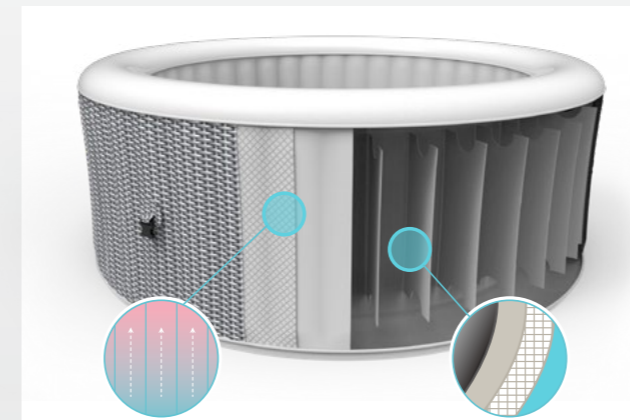
Base Protector



Filter Cartridge



Item No	Height	Power Rated	System Flow Rate	Inner/Outer Diameter	Bubble Jet Holes	Seating Capacity
17612EUV02	70cm (27.6")	220-240V 50HZ, 2040w	686L (181gal)	Φ125cm/Φ165cm (Φ49.2"/Φ65")	105	3
	70cm (27.6")	110-120V 60HZ ,1380w	686L (181gal)	Φ125cm/Φ165cm (Φ49.2"/Φ65")	105	3





# XXXXXX SPA

- Sturdy I-beam construction
- 3-ply reinforce wall offering superior strength and durability.
- Fashionable beige exterior.
- Insulated top cover and floor protector included.
- Max temperature 42°C /108°F
- 105 all-surrounding air jets
- Digital control pannel
- Waterproof PCB



Air Bubbles



Dual Heating System



Lockable Cover



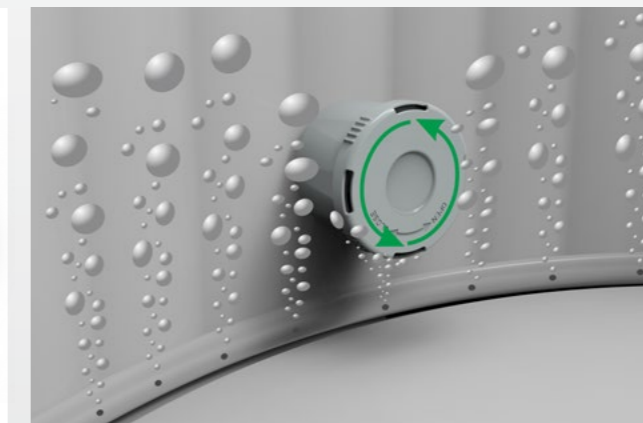
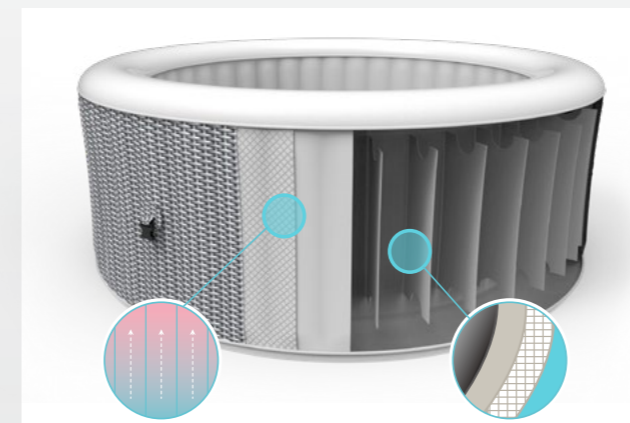
Base Protector



Filter Cartridge



Item No	Height	Power Rated	System Flow Rate	Inner/Outer Diameter	Bubble Jet Holes	Seating Capacity
	70cm (27.6")	220-240V 50HZ, 2040w	686L (181gal)	Φ135cm/Φ165cm (Φ53.1"/Φ65")	105	4
	70cm (27.6")	110-120V 60HZ ,1380w	686L (181gal)	Φ135cm/Φ165cm (Φ53.1"/Φ65")	105	4





# VENICE-GREY SPA

- Sturdy I-beam construction
- 3-ply reinforce wall offering superior strength and durability.
- Fashionable beige exterior.
- Insulated top cover and floor protector included.
- Max temperature 42°C /108°F
- 105 all-surrounding air jets
- Digital control pannel
- Waterproof PCB



Air Bubbles



Dual Heating System



Lockable Cover



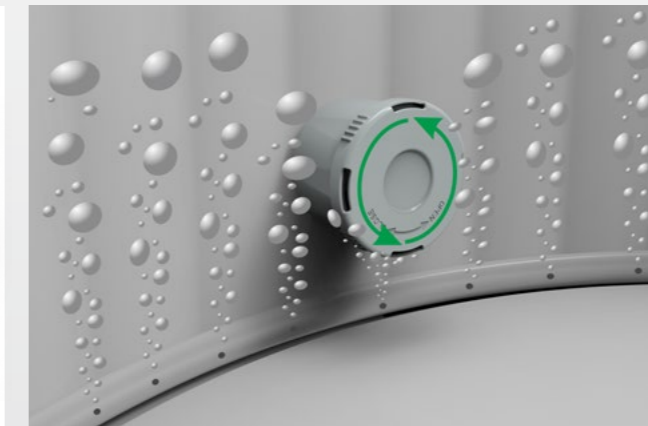
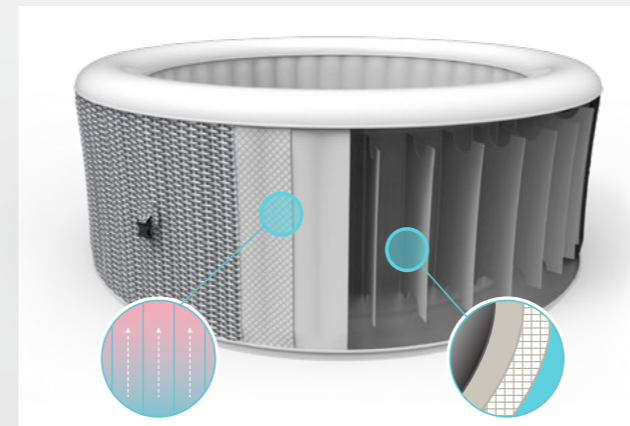
Base Protector



Filter Cartridge



Item No	Height	Power Rated	System Flow Rate	Inner/Outer Diameter	Bubble Jet Holes	Seating Capacity
17283EUV21	70cm (27.6")	220-240V 50HZ, 2040w	800L (211GAL)	Φ135cm/Φ175cm (Φ53.1"/Φ68.9")	110	4
	70cm (27.6")	110-120V 60HZ ,1380w	800L (211GAL)	Φ135cm/Φ175cm (Φ53.1"/Φ68.9")	110	4
17286EUV21	70cm (27.6")	220-240V 50HZ, 2040w	956L (253GAL)	Φ204cm/Φ160cm (Φ80.3"/Φ63")	140	6
	70cm (27.6")	110-120V 60HZ ,1380w	956L (253GAL)	Φ204cm/Φ160cm (Φ80.3"/Φ63")	140	6



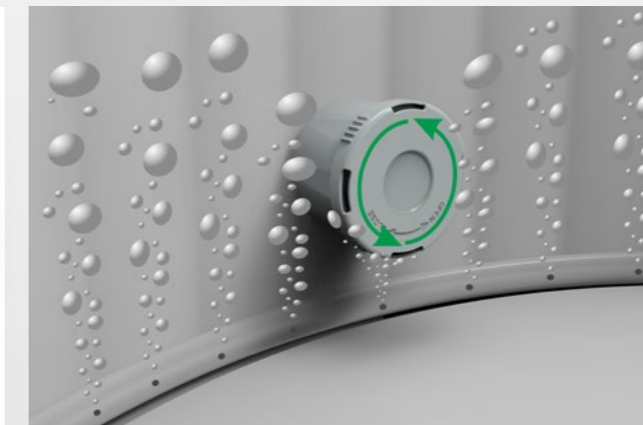
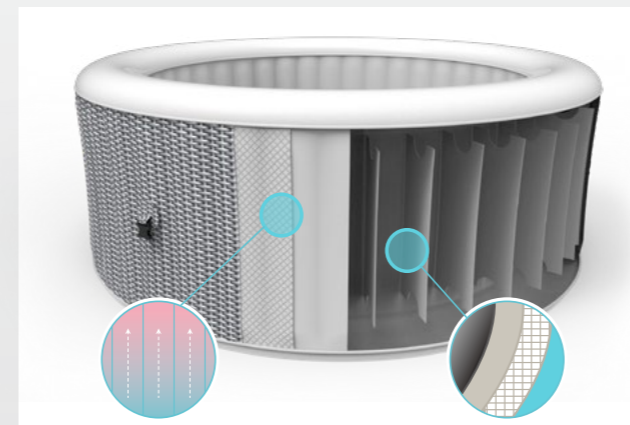


# NICE-COFFEE SPA

- Sturdy I-beam construction
- 3-ply reinforce wall offering superior strength and durability.
- Fashionable beige exterior.
- Insulated top cover and floor protector included.
- Max temperature 42°C /108°F
- 105 all-surrounding air jets
- Digital control pannel
- Waterproof PCB



Item No	Height	Power Rated	System Flow Rate	Inner/Outer Diameter	Bubble Jet Holes	Seating Capacity
17283EUV21	70cm (27.6")	220-240V 50HZ, 2040w	800L (211GAL)	Φ135cm/Φ175cm (Φ53.1"/Φ68.9")	110	4
	70cm (27.6")	110-120V 60HZ ,1380w	800L (211GAL)	Φ135cm/Φ175cm (Φ53.1"/Φ68.9")	110	4
17286EUV21	70cm (27.6")	220-240V 50HZ, 2040w	956L (253GAL)	Φ204cm/Φ160cm (Φ80.3"/Φ63")	140	6
	70cm (27.6")	110-120V 60HZ ,1380w	956L (253GAL)	Φ204cm/Φ160cm (Φ80.3"/Φ63")	140	6



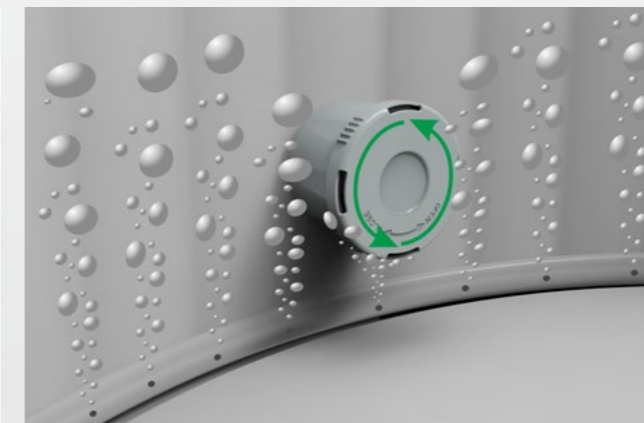
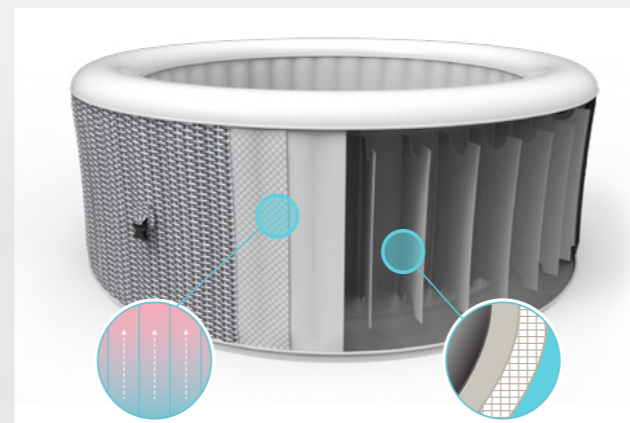


# VANCOUVER SPA

- Sturdy I-beam construction
- 3-ply reinforce wall offering superior strength and durability.
- Fashionable beige exterior.
- Insulated top cover and floor protector included.
- Max temperature 42°C /108°F
- 105 all-surrounding air jets
- Digital control pannel
- Waterproof PCB



Item No	Height	Power Rated	System Flow Rate	Inner/Outer Diameter	Bubble Jet Holes	Seating Capacity
17283EUV41	70cm (27.6")	220-240V 50HZ, 2040w	800L (211GAL)	Φ135cm/Φ175cm (Φ53.1"/Φ68.9")	110	4
	70cm (27.6")	110-120V 60HZ ,1380w	800L (211GAL)	Φ135cm/Φ175cm (Φ53.1"/Φ68.9")	110	4
17286EUV41	70cm (27.6")	220-240V 50HZ, 2040w	956L (253GAL)	Φ204cm/Φ160cm (Φ80.3"/Φ63")	140	6
	70cm (27.6")	110-120V 60HZ ,1380w	956L (253GAL)	Φ204cm/Φ160cm (Φ80.3"/Φ63")	140	6







Control System	220-240V/50Hz; 110-120V/60Hz	Certification	EU:CE/GS; US:cETLus
Heater	1500W;1350W	Filter Pump	12V/60W;24V/50W
Heating Rate	EU:1.5-2.5°C/hour; US:1-2°C/hour	Warranty	12 months-spa , electric part
Bubble Jet Holes	105-120		

Bali London Vancouver 4P Venice-Grey 4P Nice-Coffee 4P Vancouver 4P

ITEM CODE	17623EU/US	17612EUV02	17283EUV41	17283EUV21	17283EUV31	17283EUV41
COLOR BOX	58 x 51 x 57.5cm	58 x 51 x 57.5cm	58 x 51 x 57.5cm	63 x 56.5 x 56.5cm	63 x 56.5 x 56.5cm	63 x 56.5 x 56.5cm
SEATING CAPACITY	3	3	4	4	4	4

Venice-Grey 6P Nice-Coffee 6P Vancouver 6P

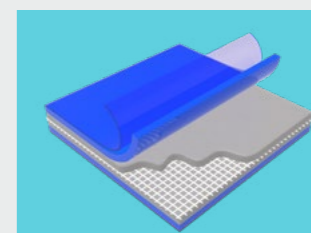
ITEM CODE	17286EUV21	17286EUV31	17286EUV41
COLOR BOX	68.5 x 63 x 56.5cm	68.5 x 63 x 56.5cm	68.5 x 63 x 56.5cm
SEATING CAPACITY	6	6	6



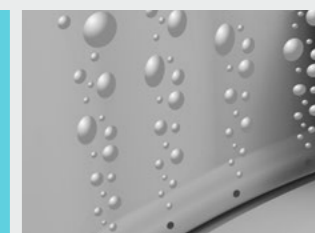


# ROTORUA PREMIUM SERIES

Puncture-resistant 3-ply laminated material with fashionable plain color exterior offer a premium decoration to your spaces .



3-ply Construction



AirBubble system





# MILAN SPA

- Sturdy I-beam construction
- 3-ply reinforce wall offering superior strength and durability.
- Fashionable beige exterior.
- Insulated top cover and floor protector included.
- Max temperature 42°C /108°F
- 105 all-surrounding air jets
- Digital control pannel
- Waterproof PCB



Air Bubbles



Dual Heating System



Filter Cartridge



Lockable Cover



Base Protector

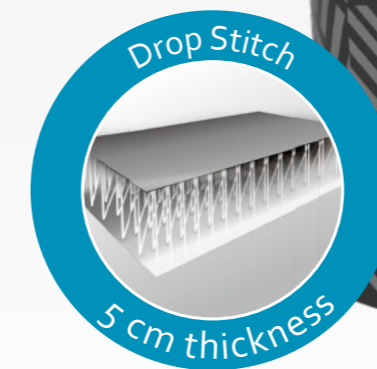
Item No	Height	Power Rated	System Flow Rate	Inner/Outer Diameter	Bubble Jet Holes	Seating Capacity
17665EUV01	70cm (27.6")	220-240V 50HZ, 2040w	940L (248gal)	Φ172cm/Φ152cm (Φ67.7"/Φ60")	120	5
	70cm (27.6")	110-120V 60HZ ,1380w	940L (248gal)	Φ172cm/Φ152cm (Φ67.7"/Φ60")	120	5





# CALIFORNIA SPA

- Sturdy I-beam construction
- 3-ply reinforce wall offering superior strength and durability.
- Fashionable beige exterior.
- Insulated top cover and floor protector included.
- Max temperature 42°C /108°F
- 105 all-surrounding air jets
- Digital control pannel
- Waterproof PCB



Air Bubbles



Dual Heating System



Filter Cartridge



Lockable Cover



Base Protector

Item No	Height	Power Rated	System Flow Rate	Inner/Outer Diameter	Bubble Jet Holes	Seating Capacity
17660EUV01	70cm (27.6")	220-240V 50HZ, 2040w	800L (211gal)	Φ145cm/Φ135cm (Φ57"/Φ53.1")	120	4
	70cm (27.6")	110-120V 60HZ ,1380w	800L (211gal)	Φ145cm/Φ135cm (Φ57"/Φ53.1")	120	4





Control System	220-240V/50Hz; 110-120V/60Hz	Certification	EU:CE/GS; US:cETLus
Heater	1500W;1350W	Filter Pump	12V/60W;24V/50W
Heating Rate	EU:1.5-2.5°C/hour; US:1-2°C/hour	Warranty	12 months-spa, electric part
Bubble Jet Holes	105-120		

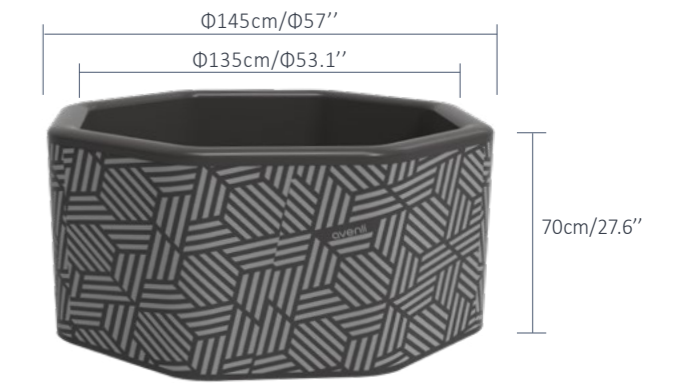
	Milan	California
--	-------	------------

ITEM CODE  
COLOR BOX  
SEATING CAPACITY

17660EUV01  
60 x 54.5 x 64cm  
4



17665EUV01  
70 x 45.5 x 64cm  
5

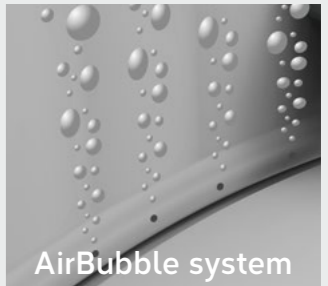
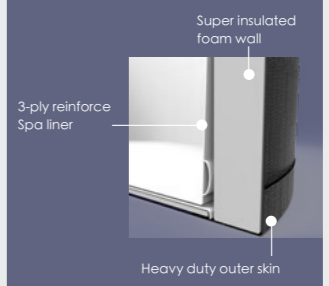






# SWIFT CURRENT SERIES

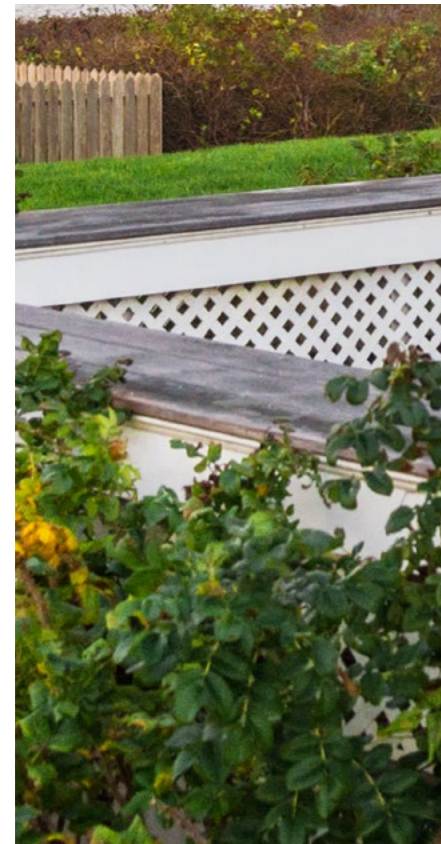
Puncture-resistant 3-ply laminated material with fashionable plain color exterior offer a premium decoration to your spaces .





# DUBAI SPA

- Sturdy I-beam construction
- 3-ply reinforce wall offering superior strength and durability.
- Fashionable beige exterior.
- Insulated top cover and floor protector included.
- Max temperature 42°C /108°F
- 105 all-surrounding air jets
- Digital control pannel
- Waterproof PCB



- Air Bubbles
- Dual Heating System
- Filter Cartridge
- Lockable Cover
- Base Protector



Item No	Height	Power Rated	System Flow Rate	Inner/Outer Diameter	Bubble Jet Holes	Seating Capacity
17621EUV01	70cm (27.6")	220-240V 50HZ, 2040w	1200L (317gal)	Φ193cm/Φ165cm (Φ76"/Φ65")	90	6
17621EUV01	70cm (27.6")	110-120V 60HZ ,1380w	1200L (317gal)	Φ193cm/Φ165cm (Φ76"/Φ65")	90	6



# OSAKA SPA

- Sturdy I-beam construction
- 3-ply reinforce wall offering superior strength and durability.
- Fashionable beige exterior.
- Insulated top cover and floor protector included.
- Max temperature 42°C /108°F
- 105 all-surrounding air jets
- Digital control pannel
- Waterproof PCB



- Air Bubbles
- Dual Heating System
- Filter Cartridge
- Lockable Cover
- Base Protector

Item No	Height	Power Rated	System Flow Rate	Inner/Outer Diameter	Bubble Jet Holes	Seating Capacity
17618EUV01	70cm (27.6")	220-240V 50HZ, 2040w	812L (215gal)	Φ156cm/Φ140cm (Φ61.4"/Φ55")	90	4
	70cm (27.6")	110-120V 60HZ ,1380w	812L (215gal)	Φ156cm/Φ140cm (Φ61.4"/Φ55")	90	4
17691EUV01	70cm (27.6")	220-240V 50HZ, 2040w	1170L ( 309gal)	Φ184cm/Φ160cm (Φ72.4"/Φ63")	120	6
	70cm (27.6")	110-120V 60HZ ,1380w	1170L ( 309gal)	Φ184cm/Φ160cm (Φ72.4"/Φ63")	120	6



# SAIPAN SPA

- Sturdy I-beam construction
- 3-ply reinforce wall offering superior strength and durability.
- Fashionable beige exterior.
- Insulated top cover and floor protector included.
- Max temperature 42°C /108°F
- 105 all-surrounding air jets
- Digital control pannel
- Waterproof PCB



Air Bubbles



Dual Heating System



Filter Cartridge



Lockable Cover



Base Protector

Item No	Height	Power Rated	System Flow Rate	Inner/Outer Diameter	Bubble Jet Holes	Seating Capacity
17618EUV01	70cm (27.6")	220-240V 50HZ, 2040w	812L (215gal)	Φ156cm/Φ140cm (Φ61.4"/Φ55")	90	4
	70cm (27.6")	110-120V 60HZ ,1380w	812L (215gal)	Φ156cm/Φ140cm (Φ61.4"/Φ55")	90	4
17691EUV01	70cm (27.6")	220-240V 50HZ, 2040w	1170L ( 309gal)	Φ184cm/Φ160cm (Φ72.4"/Φ63")	120	6
	70cm (27.6")	110-120V 60HZ ,1380w	1170L ( 309gal)	Φ184cm/Φ160cm (Φ72.4"/Φ63")	120	6





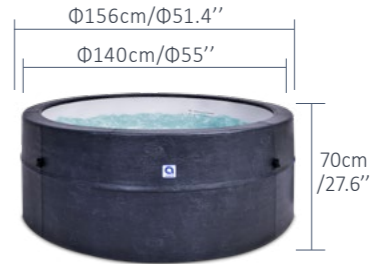
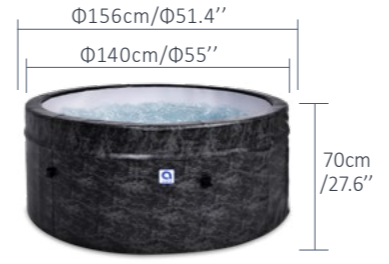
Control System	220-240V/50Hz; 110-120V/60Hz	Certification	EU:CE/GS; US:cETLus
Heater	1500W;1350W	Filter Pump	12V/60W;24V/50W
Heating Rate	EU:1.5-2.5°C/hour; US:1-2°C/hour	Warranty	12 months-spa , electric part
Bubble Jet Holes	105-120		

Osaka Saipan

ITEM CODE  
COLOR BOX  
SEATING CAPACITY

17660EUV01  
60 x 54.5 x 64cm  
4

17660EUV01  
60 x 54.5 x 64cm  
4



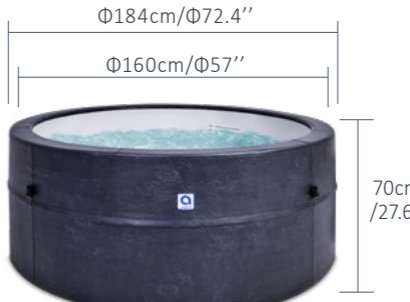
Osaka Saipan Dubai

ITEM CODE  
COLOR BOX  
SEATING CAPACITY

17660EU  
24x54x12  
6

17618EU  
24x54x12  
6

17618EU  
24x54x12  
6





# AVENLI PUMP

Design for Safe and Easy Use

## ADVANCED PTC HEATING TECHNOLOGY

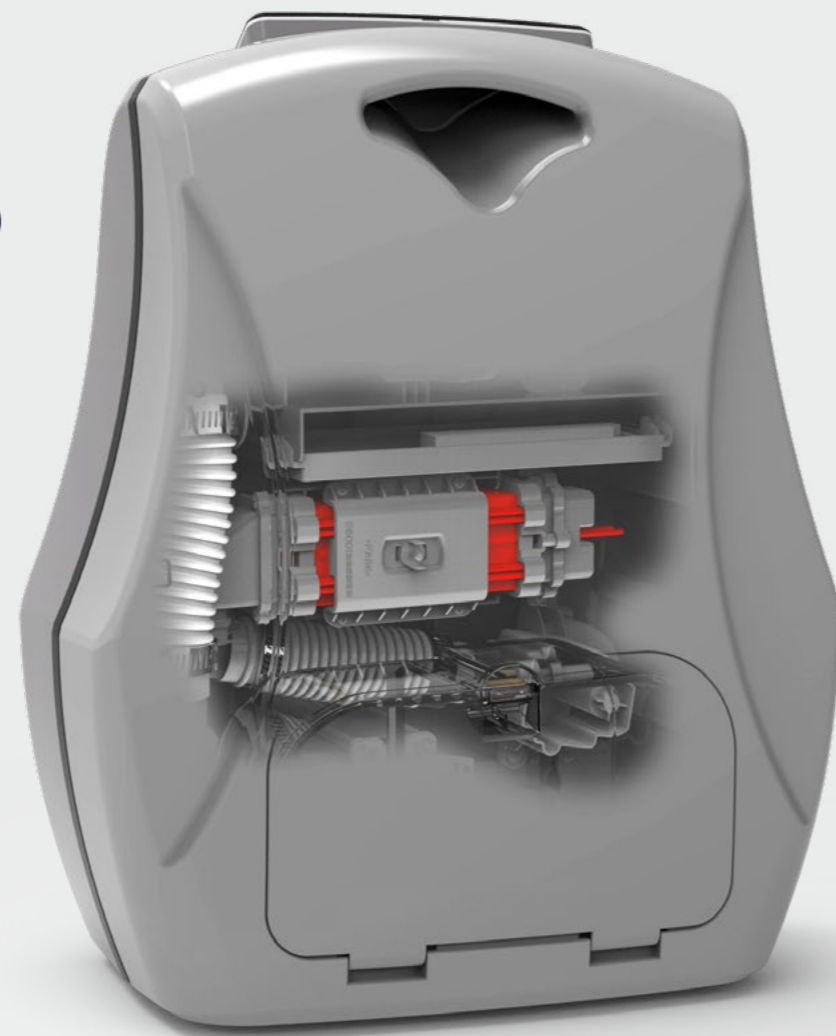
\*PTC-Positive Temperature Coefficient

Efficient filtration is essential for a quality swim experience. Who wants to swim in a dirty pool?

Intex's line of pumps and cartridges guarantee a cleaner pool with:

- Powerful pumps in several of our most popular pool sets
- Filter cartridges with thicker, heavier paper and more pleats
- Water inlet jets for enhanced water flow back into the pool
- 2-year warranty

The results will be faster water circulation, improved filtration, and best of all – a superior swim experience!



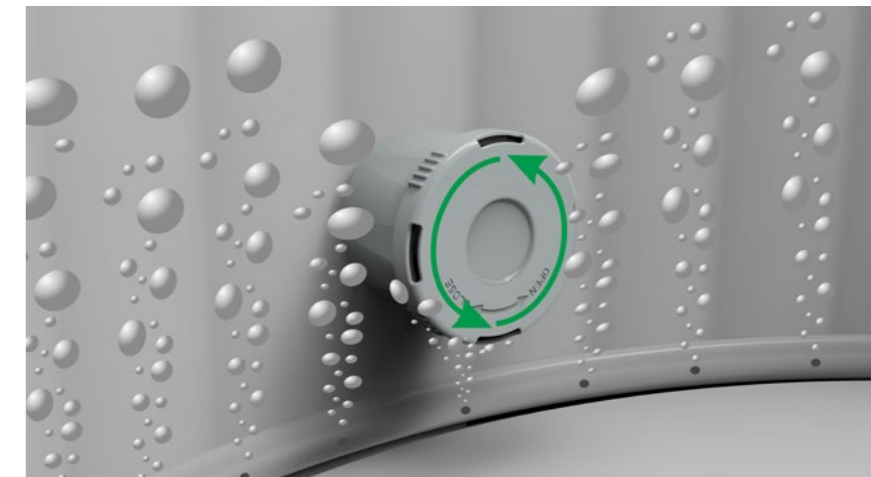
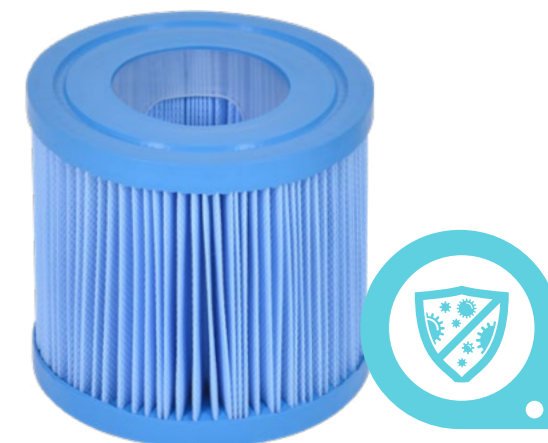
### SPA FILTER CARTRIDGE

- 290760
- $\Phi 10.5 \times 8 \text{cm}$
- Professional SPA filter cartridge are characterized with 150 pleats
- High water flow
- Shrink wrap
- 0.055cbm/48pcs/ctn



### ANTI-BACTERIAL FILTER CARTRIDGE

- 290802
- Extends the life of your filter
- Improves the quality of your water
- Neutralizes bacteria, fungi and algae and prevents their proliferation
- $\Phi 10.5 \times 8 \text{cm}$
- Shrink wrap
- 0.055cbm/48pcs/ctn





# ACCESSORIES

COMFORT&FEEL

## CUP HOLDER & HEADREST

- Our Cup Holder and Headrest turn every portable Spa session into the ultimate wellness experience. With our headrest, your head rests in a slightly elevated position, greatly improving blood circulation. At the same time, our cup holder ensures that your favorite drink is always within reach, which means that you can always stay fully hydrated.

## Headrest & Holder set

- 290853
- TPU
- For DUBAI SPA
- 2 Headrests
- Color box

## Headrest & Holder set

- 290410
- TPU
- For BALI / LONDON / VANCOUVER / NICE / VENICE SPA
- 2 Cup holders & 1 Headrest
- Color box
- 0.051cbm/2set/ctn



## Headrest

- 290671
- TPU
- For OSAKA/SAIPAN SPA
- 2 Headrests
- Color box
- 0.054bm/2set/ctn



## SPA FOOT BASIN

- 137205-1
- 87x68x14cm / 34"x27"x5.5"
- 10ga.(0.25mm) PVC
- Repair patch, Color box
- 0.026cbm/12pcs/ctn



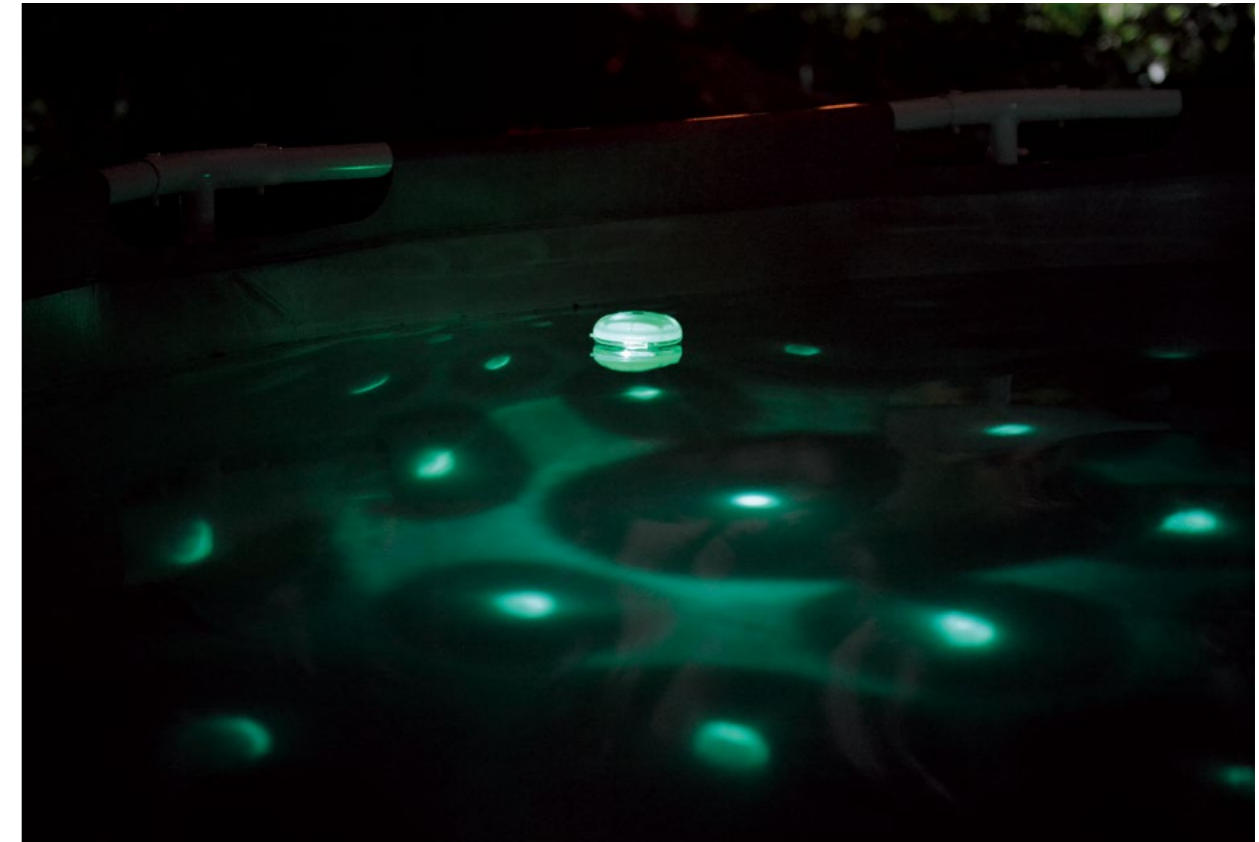
## SPA BOOSTER SEAT CUSHION

- 97265
- Size : 50 x 35 x 11 cm
- 10ga.(0.25mm) PVC
- Insert card with poly bag
- 0.037cbm/24pcs/ctn



## MULTI-COLORED BATTERY OPERATED LED LIGHT FOR BUBBLE SPA

- Create the perfect mood and ambience while you relax
- Illuminates up to 5 different colors: white, green, teal, blue & purple
- Two lighting modes: single color or color changing mode
- 2-hour auto shut-off
- Requires 3 AAA batteries
- Wattage: 1.0W
- 8 ea, 8.8 lb (4.0 kg)





# ACCESSORIES

COMFORT&FEEL

## SPA MAINTENANCE KIT

- 290850
- Leaf net x1
- Brush x1
- Pad Brush x1
- Dispenser x1
- Absorbent Foam x1
- Waterline Glove x1
- Color box
- 0.038cbm/3set/ctn



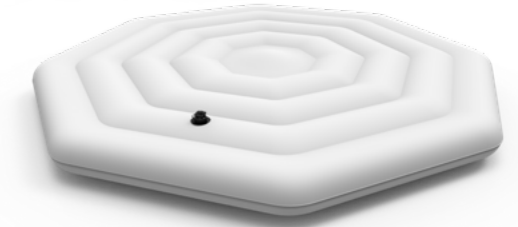
# ACCESSORIES

ENERGY-SAVING

## SPA POOL LID

- Heavy-duty PVC
- Help the temperature of spa water to become warm faster
- Save 20% electric energy
- Compact storage measurement is convenient to transport
- Easy to set up

- 17556
- For 17621 6P Octagon SPA
- L160x25cm
- Color box
- 0.045cbm/4pcs/ctn



Saving 20% energy

