



PUNTA LAGUNA

LUXURY APARTMENTS

CORASOL, RIVIERA MAYA

An aerial photograph of a luxurious golf resort. The image shows a winding road through a dense tropical forest, flanked by lush green golf courses and several large, serene lakes. In the foreground, a large, curved stone wall with two arched openings, each covered in climbing vines, frames a large, calm body of water. The background features rolling hills and a clear blue sky.

The Ultimate
in Luxury Living
on the Riviera Maya

GETTING TO CORASOL

While Corasol feels like a world of its own, **getting here is simple**. Cancun International Airport — an easy 40-minute drive from Corasol — is served **by all major airlines with many offering direct flights from major U.S. cities.**

Cancun International Airport

40 minutes

Coastal Resort Town Playa del Carmen

8 minutes

Xcaret Eco Water Park

15 minutes

Tulum Beaches & Mayan Ruins

50 minutes

Cenote Chaak Tun Subterranean Caves

20 minutes

Coba Mayan Ruins

1.5 hours

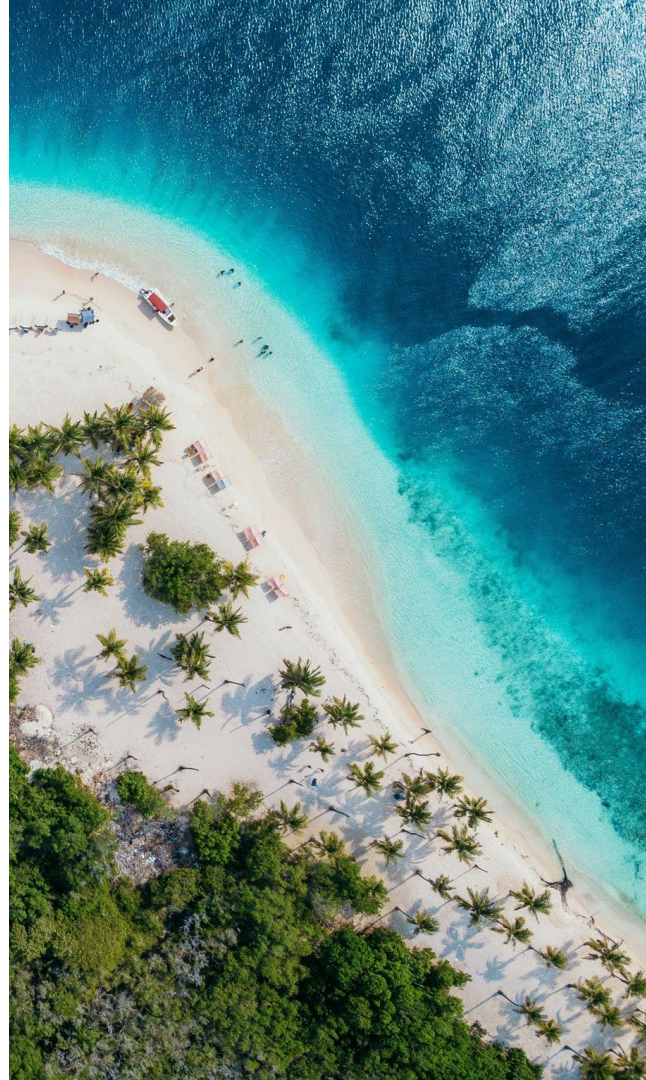


RIVIERA MAYA

JOURNEY TO THE JEWEL
OF THE MEXICAN CARIBBEAN

Riviera Maya has quickly become one of North America's most sought-after destinations. **Bordered by lush jungles and white sand beaches on the Yucatan Peninsula,** this enchanting paradise is also located minutes from iconic archaeological attractions dating back to the Maya civilization and **UNESCO World Heritage Sites.**





INTRODUCING CORASOL

Claiming a prized, pristine stretch of the Riviera Maya coastline, **Corasol** represents a stunning new vision for exceptional resort living and legacy homeownership, all artfully sculpted into the landscape by **Sordo Madaleno** and **CUAIK Arquitectos**. Flawless white sand beaches, tranquil lagoons and a verdant valley of native jungle flora set the stage for this exceptionally private, gated residential resort community on the Caribbean Sea.



Main Access



Distance
to the beach

10 minutes walk

3 minutes in golf cart



UBICACIONES

- 1 Acceso
- 2 Palm Villas Estate Homes
- 3 The Village Resort & Residences
- 4 Costa Residences
- 5 Costa Beach Club
- 6 Punta Laguna
- 7 The Park
- 8 Huertos Orgánicos
- 9 Casa Club Gran Coyote

▲ Acceso privado a 5ª Avenida

Mar Caribe



CORASOL

CORASOL OWNERS'S & RENTERS ACCESS TO:

Corasol Beach Area

Free Transportation from Punta Laguna to the beach. Parking, Dressing Rooms, Bathrooms. Concierge Service Upon Request: Beach Beds & Chairs, Sun Umbrellas, Hammocks and Coolers.



Images are illustrative and the final product may vary without notice

**In progress*

1 Premium All Inclusive Beachfront Resorts

Access to purchase all inclusive day passes



CORASOL MEMBERSHIP ACCESS TO:

Costa Beach Club



CORASOL MEMBERSHIP ACCESS TO:

The Park



Gran Coyote Golf Course



Community Organic Gardens



*In progress

*In progress



Location of
Punta Laguna

A retreat within a resort experience

Immersed in a serene jungle landscape, Punta Laguna encompasses 12 acres of family-friendly, owner-exclusive amenities and activities. Its bright, modern residences offer breezy indoor/outdoor living spaces and sweeping views of the nearby, jungle lake and golf course.



PUNTA LAGUNA

LUXURY APARTMENTS

CORASOL, RIVIERA MAYA

- 344 apartments
- 4 buildings
- 8 elevators
- Parking Area



PUNTA LAGUNA

LUXURY APARTMENTS

CORASOL, RIVIERA MAYA

- From 2 Bedroom
- 2 Bathroom
- Living / Dining Room
- Kitchen
- Terrace

- Interior from: 70m² / 753 sqf
- Terrace from: 12m² / 129 sq ft
- Total from: 82m² / 882 sq ft





PUNTA LAGUNA

Experiences

- | | |
|------------------------|-----------------------|
| 1 . Motor Lobby | 11 . Firepits |
| 2 . Lobby | 12 . Hammocks |
| 3 . Zen Garden | 13 . Laguna Pool |
| 4 . Gym | 14 . Oasis Pool |
| 5 . Coworking | 15 . Laguna Pier |
| 6 . Yoga Area | 16 . Lounge Bar |
| 7 . Ventura Playground | 17 . Café / Lounge |
| 8 . Teens Hall | 18 . Paddle Courts |
| 9 . Kids Club | 19 . Pickleball Court |
| 10 . Barbecue Area | 20 . Reading Jungle |

*The project may be modified
according to the needs of the development.

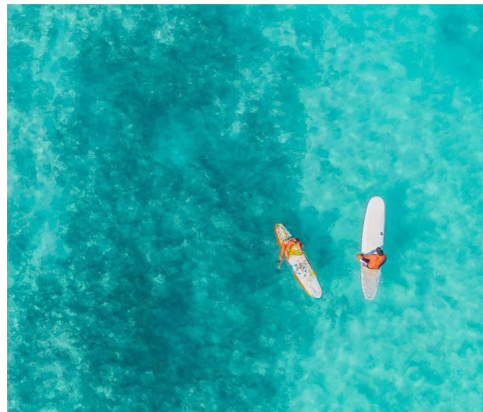
THE LOBBY CONCIERGE: YOUR “INSIDE CONNECTION” TO THE BEST PLAYA DEL CARMEN

Special Courtesy: set up of umbrellas, chairs, loungers and ice coolers at Corasol Beach Area.

Upon Request:

- Arrange airport transfers and ground transportations
- Book tours, excursions, spa service & massages
- Reserve tickets for shows
- Make dinner reservations
- Hire Babysitter, Housekeeping, Private Chef, Laundry Services

*Services upon request will depend on availability and has an additional cost.





PUNTA LAGUNA

LUXURY APARTMENTS

"CARASOL, RIVIERA MAYA"

Las imágenes presentadas son ilustrativas, el producto final puede variar y cambiar sin previo aviso de acuerdo a las necesidades del proyecto y del desarrollador.



PUNTA LAGUNA

LUXURY RESORTS



Las imágenes presentadas son ilustrativas, el producto final puede variar y cambiar sin previo aviso de acuerdo a las necesidades del proyecto y del desarrollador.



PUNTA LAGUNA

LUXURY APARTMENTS

CORASOL, RIVIERA MAYA



Las imágenes presentadas son ilustrativas, el producto final puede variar y cambiar sin previo aviso de acuerdo a las necesidades del proyecto y del desarrollador.



PUNTA LAGUNA

LUXURY APARTMENTS

CORASOL, RIVIERA MAYA



Las imágenes presentadas son ilustrativas, el producto final puede variar y cambiar sin previo aviso de acuerdo a las necesidades del proyecto y del desarrollador.



Las imágenes presentadas son ilustrativas, el producto final puede variar y cambiar sin previo aviso de acuerdo a las necesidades del proyecto y del desarrollador.



PUNTA LAGUNA

LUXURY APARTMENTS

CORASOL, RIVIERA MAYA



Las imágenes presentadas son ilustrativas, el producto final puede variar y cambiar sin previo aviso de acuerdo a las necesidades del proyecto y del desarrollador.



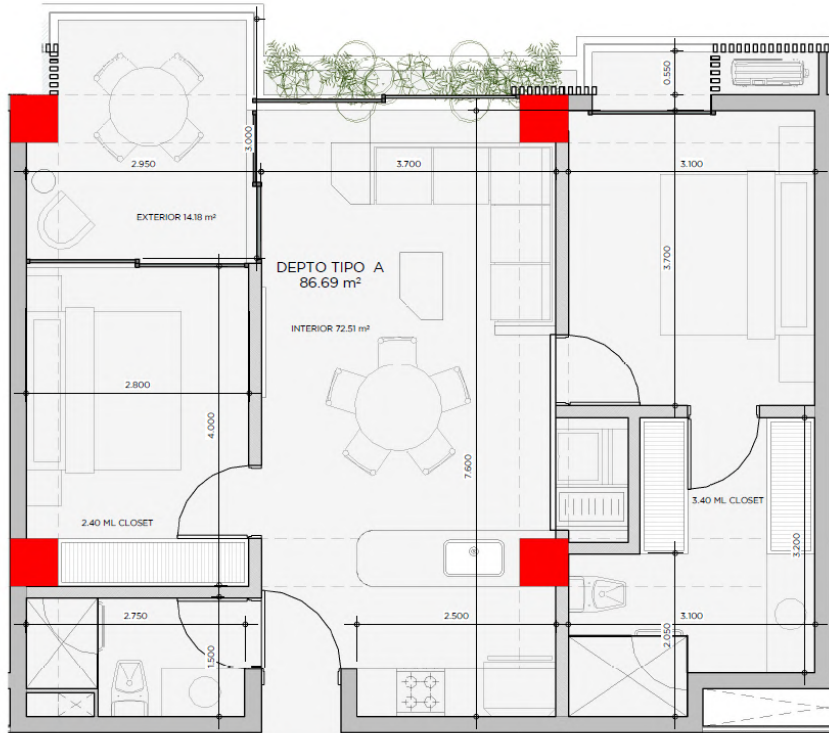
PUNTA LAGUNA

Condo interiors

- Interior flooring: Natural stone floor
- Balcony flooring: Chukum
- Apartment divisory walls: Paste
- Frames: Paste
- Color: Lynx
- AC: In each bedroom and living room
- Cable TV, internet and telephone ducts in each bedroom and living room (service activation to be done by owner).
- LED lights fixtures.
- Carpentry: closets and access door.
- Kitchen includes: Stone bar, cabinets and cupboards in wood finish, Hood, stove and stainless steel sink.
- Single sink and faucet with cold and hot water.
- Cooktop.
- Oven.
- Electric extractor hood.
- Bathroom sink and accessories: shower towel rail, paper holder, shower arm and sink with single lever faucet. Cold and hot water tap/faucet.

PUNTA LAGUNA

Type A



- Bedrooms: 2
- Bathrooms: 2
- Living / Dining Room
- Kitchen
- Terrace

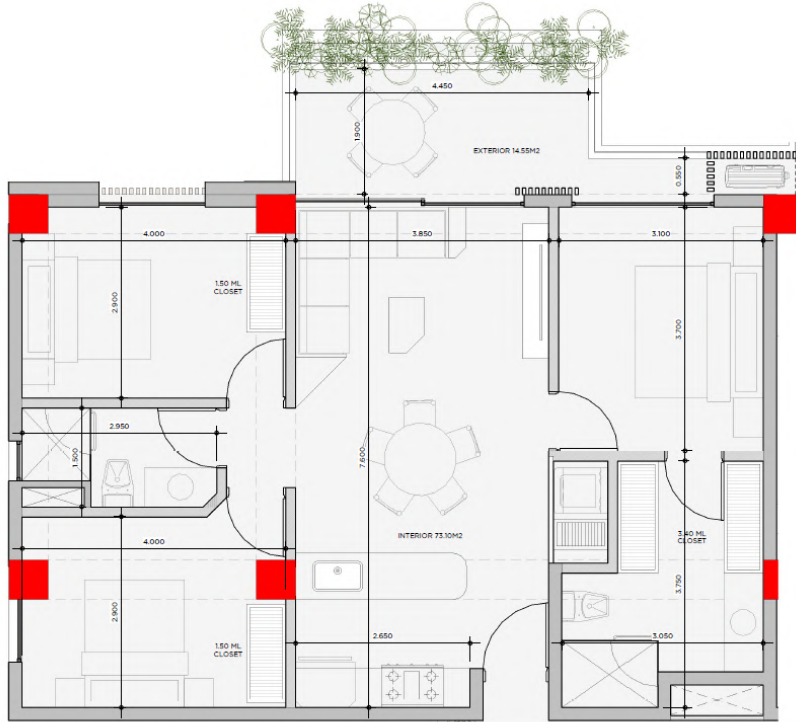
- Interior from: 70m2 / 753 sqf
- Terrace from: 12m2 / 129 sq ft
- Total from: 82m2 / 882 sq ft

PLANTA DEPTO TIPO A

ESCALA 1 : 50

PUNTA LAGUNA

Type B



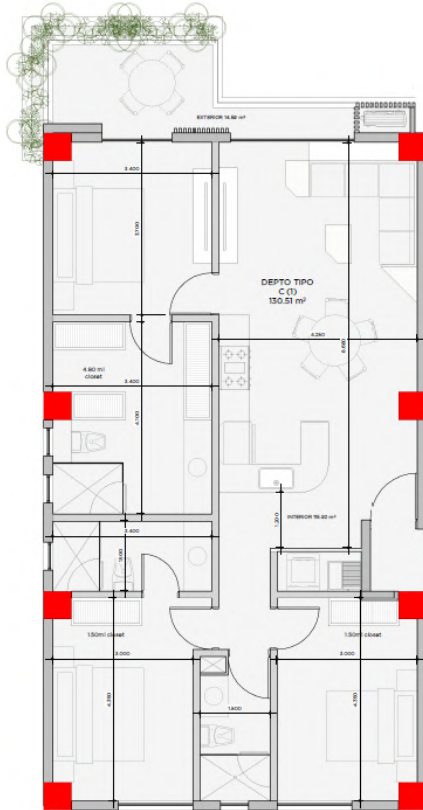
- Bedrooms: 3
 - Bathrooms: 2
 - Living / Dining Room
 - Kitchen
 - Terrace
-
- Interior from: 90m2 / 969 sqf
 - Terrace from: 14m2 / 150 sq ft
 - Total from: 94m2 / 1,119 sq ft

PLANTA DEPTO TIPO B

ESCALA 1 : 50

PUNTA LAGUNA

Type C



- Bedrooms: 3
- Bathrooms: 3
- Living / Dining Room
- Kitchen
- Terrace

- Interior from: 113m² / 1,216 sqf
- Terrace from: 12m² / 129 sq ft
- Total from: 125m² / 1,345 sq ft

PLANTA DEPTO TIPO C

ESCALA 1:50



Real Estate company financed by one of the most important corporate groups in Mexico, **Salinas Pliego family**.

- Prime level directive board with outstanding investment and development experience in real estate projects looking forward to provide the highest returns to partners and stakeholders.

- Working in partnership with the most prestige architects, building and contractor companies in the country.

Headquarters based in Santa Fe, Mexico City.

- Origina's business plan is realistically designed to reach the goal of becoming one of the largest real estate companies at national level, in the next 4 years.





CORASOL



corasol.mx

ventascorasol@originamx.com | +52 984 157 5556

Federal Highway 307 Cancun - Chetumal, Km 294 + 700,
Zip Code 77710, Solidaridad, Playa del Carmen, Quintana Roo, Mexico.