

## NBS Links

[NBS Website](#)  
[NBS Facebook](#)

## Upcoming Events

### *Lawn & Garden Show*

2/28/19-3/3/19  
 @ Nashville Fairgrounds

### *March Meeting*

3/5/19, 6:30pm-9pm  
 @ Cheekwood  
 \*\*Date changed\*\*

### *April Meeting*

4/9/19, 6:30pm-9pm  
 @ Cheekwood

### *Garden Tour*

4/27/19, 10am-2pm

## Meetings

2nd Tuesday of every month  
 @ Cheekwood, Massey Hall

## 2019 Dues

\$30 per member  
 or  
 \$40 per family

## Blog Roll

[Crataegus, Deciduous Work](#)  
[Crataegus, Revisit](#)  
[Bonsai Tonight, Combining Elements](#)  
[Bonsai Tonight, Coast Redwood](#)  
[Bonsai Tonight, Reducing Primaries](#)  
[Nebari Bonsai, Twisted Shohin](#)  
[Valvanis Bonsai, Shunka-en](#)

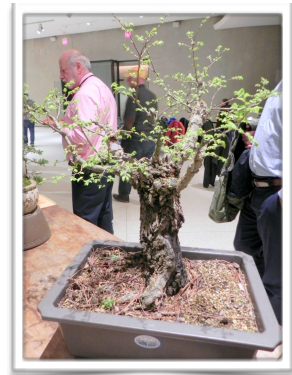


Hello to all the Members and Guests of the Nashville Bonsai Society! We hope all of your trees are making it through the winter just fine, Spring is almost here!

### *February Recap*

After a long break, we were back in full swing during February! We had a great turnout in our first meeting of 2019! We discussed the overall 2019 calendar, our Mentorship Program and the Lawn & Garden Show. John Wall also led a great talk on collecting trees.

Coverage of the Lawn & Garden Show will be in our April newsletter.



### *Upcoming Events*

Don't forget NBS will have a booth at the Nashville Lawn & Garden Show from February 28th through March 3rd. If you've volunteered to sit at the booth, we'll see you there. If not, come by to say hello and see the Show and check out our display.

Our next club meeting is March 5th. Note, this is the first Tuesday of the month! Cheekwood had a conflict come up for our normal meeting date.

This meeting is a must see for any newcomer to the bonsai world! We will have a repotting demonstration with not one but three trees! Mike Brown, Eileen Knox, and Zach Kent will each repot a

tree, discussing their process and answering all your questions along the way. If you don't have a lot of experience with the repotting process, this will be a great way to learn more.

In April, we have Owen Reich doing a demonstration on deciduous material during our meeting and we have our Annual Garden Tour. We need four gardens for this event. If you are interested in hosting, please email John Cole.



## **Bogan's Bonsai**

**Lynnville, IN**

**(30 min. north of Evansville, Off I-64,  
2.5 hr N of Nashville)**

**Open by Appointment only**

**812-922-5451**

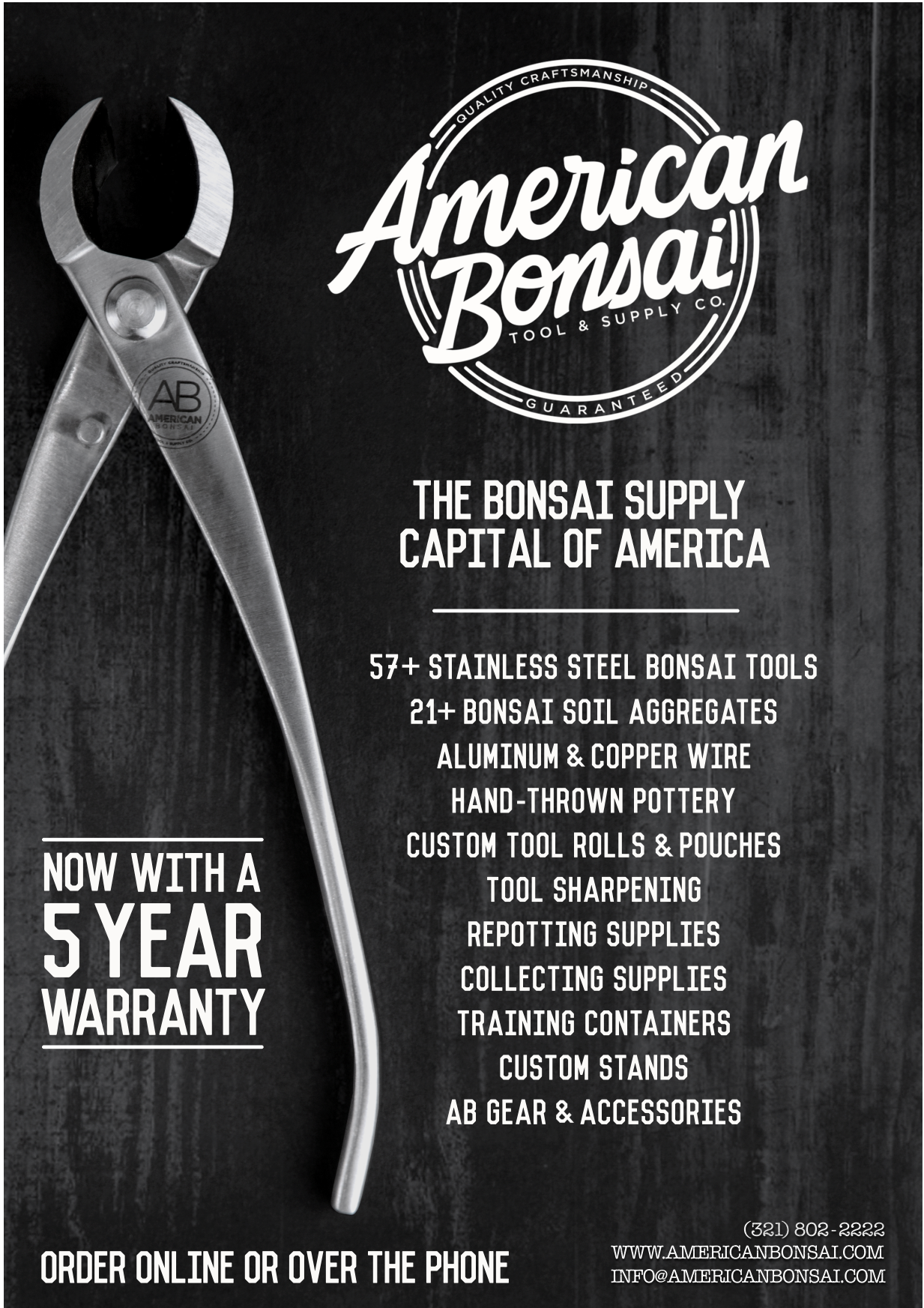
**Over 1200 different pots in stock.**

**All sizes, styles, & shapes**

**Japanese, Chinese, British & American Hand-  
made bonsai pots.**

Tokename, Erin Pottery, Sara Rayner pottery,  
bonsai, soil, wire, tools, stands, misc. supplies





## THE BONSAI SUPPLY CAPITAL OF AMERICA

---

57+ STAINLESS STEEL BONSAI TOOLS

21+ BONSAI SOIL AGGREGATES

ALUMINUM & COPPER WIRE

HAND-THROWN POTTERY

CUSTOM TOOL ROLLS & POUCHES

TOOL SHARPENING

REPOTTING SUPPLIES

COLLECTING SUPPLIES

TRAINING CONTAINERS

CUSTOM STANDS

AB GEAR & ACCESSORIES

---

NOW WITH A  
**5 YEAR**  
WARRANTY

---

ORDER ONLINE OR OVER THE PHONE

(321) 802-2222  
WWW.AMERICANBONSAI.COM  
INFO@AMERICANBONSAI.COM

*Care Calendar - March*

	<b>Weather</b>	<b>Tree Talk – Indicators</b>	<b>How to Respond</b>
<b>March</b>	<p>Windyest month Last hard freeze.</p> <p>Avg. Low 39° Avg. High 61° Record Low 2° Record High 89°</p>	<p>Longer days and warmer temperatures mean that most trees are actively putting on new foliage. Water needs continue to increase. New foliage has no cuticle and invites insects and diseases. Best time to re-pot a tree is just before bud break.</p>	<p>Apply 1st round of organic fertilizer for conifers when daytime temps average 60°. Protect trees from high winds by keeping on the ground. Protect new foliage from temps below 42° and over 75° until leaves harden off. Protect newly potted trees from wind and temps below 42°. Monitor water needs. Repot needle juniper, beech and oaks later in month if buds are ready to open.</p>

## 2019 Calendar

All events in the “Other Event” and “Mentorship” categories are member’s only events. All monthly meetings are open to the public.

	January	February	March	April	
<b>Monthly Meeting</b>	N/A	Topic: Collecting Trees 2/12/19, 6:30pm-9pm	Topic: Repotting Demo's 3/5/19, 6:30pm-9pm	Topic: Deciduous Demo w/ Owen R 4/9/2019, 6:30pm-9pm	
<b>Other Event</b>	N/A	Lawn & Garden Expo 2/28/19-3/2/19, 8am-5pm	Lawn & Garden Expo 2/28/19-3/2/19, 8am-5pm	Member Garden Tour 4/27/19, 10am-2pm	
<b>Mentorship</b>	101 Class 1/5/19, 10am-2pm	101 Class 2/2/19, 10am-2pm	101 Class 3/2/19, 10am-2pm	101 Class 4/6/19, 10am-2pm	Pines (SF) Class 4/13/19, 10am-2pm
	May	June	July	August	
<b>Monthly Meeting</b>	Topic: Deciduous Discussion **@ Eisei-en** 5/14/19, 6:30pm-9pm	Topic: Crepe Myrtle Discussion & Show Prep 6/11/19, 6:30pm-9pm	Topic: Bald Cypress Demo w/ John W 7/9/19, 6:30pm-9pm	Topic: Bonsai Pottery 8/13/2019, 6:30pm-9pm	
<b>Other Event</b>	Open House, Turnbull Creek Bonsai 5/4/19, 1pm-5pm	BYOT Workshop w/ Owen R 6/1/19, 8am-12pm	NBS Annual Show 7/13-14/19, 10am-4pm	TBD	
<b>Mentorship</b>	101 Class 5/4/19, 10am-2pm	Pine (MF) Class 6/15/19, 10am-2pm	Tree Work 7/6/19, 10am-2pm	Tree Work 8/3/19, 10am-2pm	
	September	October	November	December	
<b>Monthly Meeting</b>	Topic: Juniper Discussion 9/10/19, 6:30pm-9pm	Topic: Tree Talk, Winter Edition 10/8/19, 6:30pm-9pm	Topic: Conifer Demo w/ Bjorn B 11/12/19, 6:30pm-9pm	N/A	
<b>Other Event</b>	Cheekwood Moon Viewing TBD	Fall Picnic TBD, 2pm-6pm	N/A	N/A	
<b>Mentorship</b>	Tree Work 9/7/19, 10am-2pm	101 Class 10/5/19, 10am-2pm	101 Class 11/2/19, 10am-2pm	N/A	



Located at the Garden Stop  
6304 Hills Chapel Road  
Nashville , TN. 37211  
Corner of Nolensville Rd and  
Hills Chapel Rd just south of  
Lenox Village.

615-429-1301

Bonsai Trees  
Prebonsai trees in nursery pots  
Bonsai pots and training pots  
Soil components and premixed soil.  
Wire- Aluminum and Copper  
Cut paste , screens, lime sulfur and more.

## Board Members

**President:** John Cole  
[john.cole3829@comcast.net](mailto:john.cole3829@comcast.net)

**Program Chair & Editor:** Zach Kent  
[zachkent29@gmail.com](mailto:zachkent29@gmail.com)

**Membership & Education Director:** Eileen Knox  
[eileenknox@me.com](mailto:eileenknox@me.com)

**Treasurer:** Albert Kolbe  
[albertkolbe@yahoo.com](mailto:albertkolbe@yahoo.com)

**Hospitality Chair:** Carol Clark-Evans  
[cevans.email@yahoo.com](mailto:cevans.email@yahoo.com)

**Past President:** Mike Brown  
[mbro9793@gmail.com](mailto:mbro9793@gmail.com)

## Our Sponsors

[American Bonsai](#)

[Bogan's Bonsai](#)

[Creekside Bonsai](#)

[Eisei-en](#)