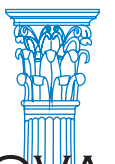




SLIMLINE

premium architectural profiles



VILANOVA

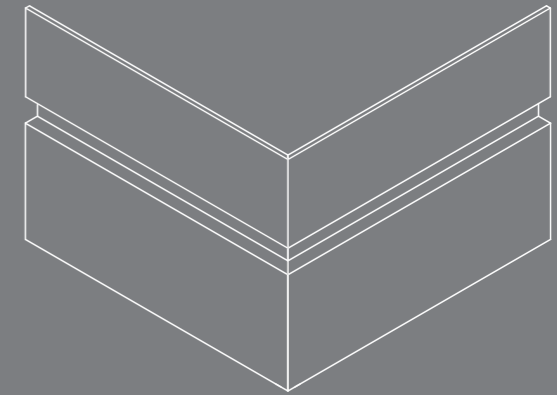
SEAMLESS JOINTS BETWEEN WALL AND FLOOR TRANSITIONS

The advantage of the SLIMLINE baseboard system is the advanced matching properties of powder-coating aluminium to your wall texture. Using the highest-grade powder with premium fine texture creates the most matte finish to match your wall surface while hiding the strength of the aluminium. The result is a wall to floor transition that will keep its shape and finish for decades to come.

All cover profiles come with a standard RAL White 9016 Premium Fine Structure finish. Additional colours of anodized, RAL or NCS is also available upon request.

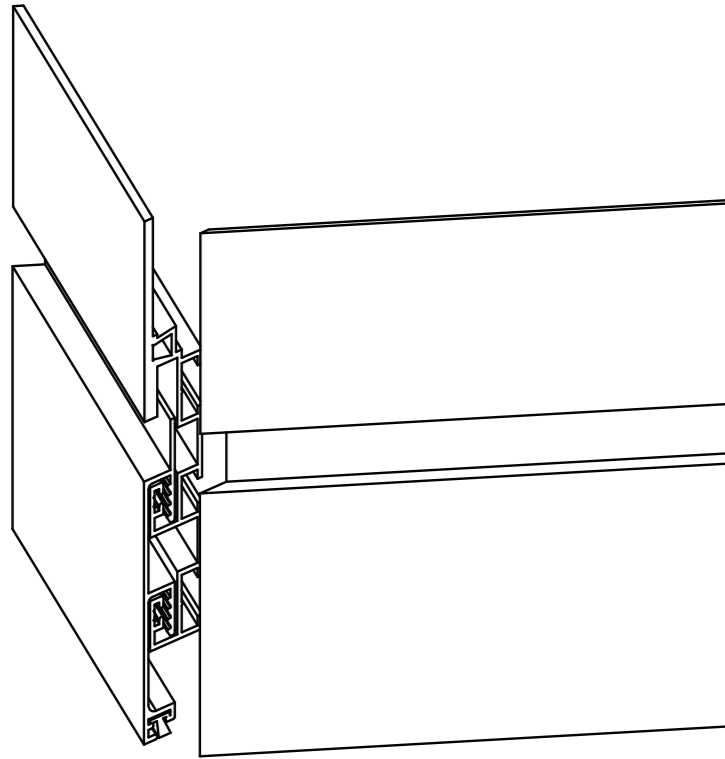


SLIMLINE



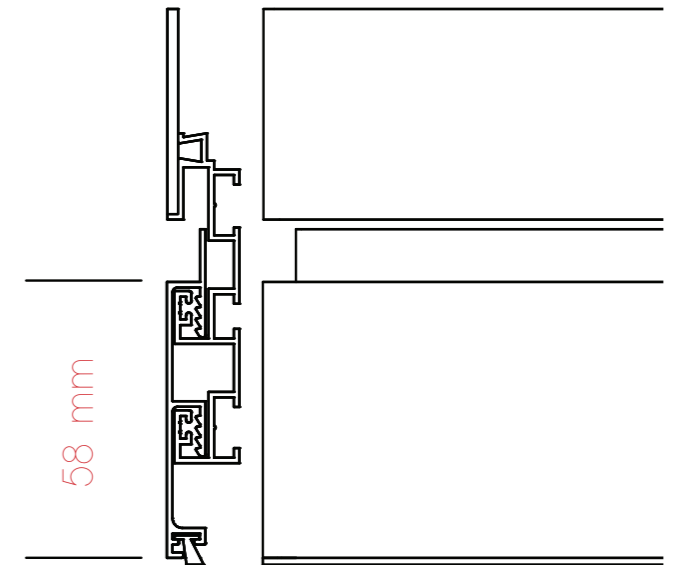
premium alloy baseboard

CLEAN LINES
FOR MODERN
SPACES

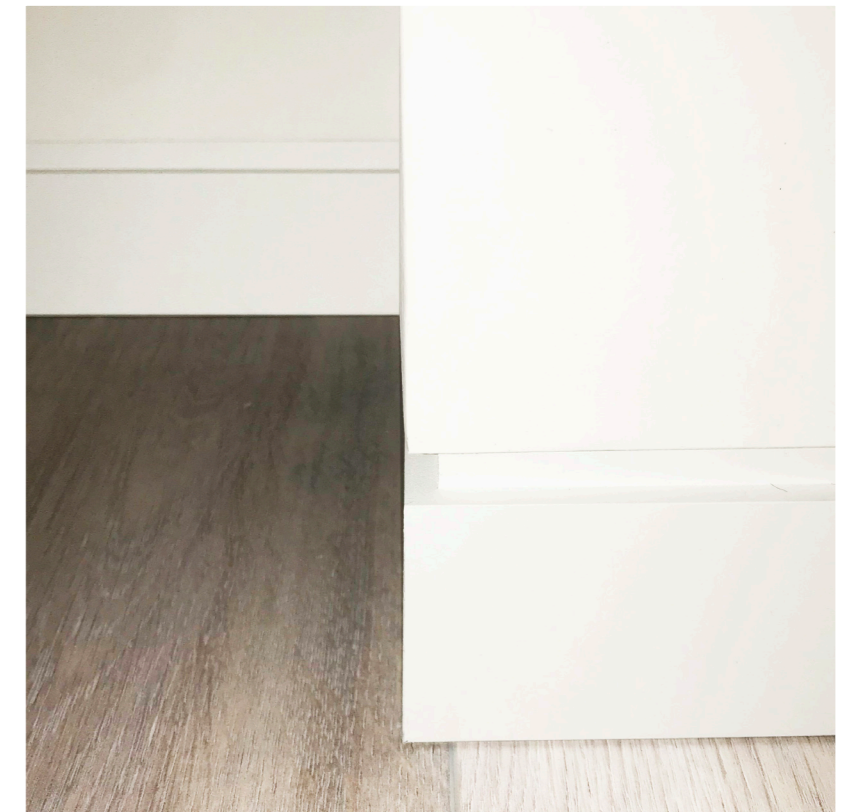


The SLIMLINE alloy baseboards hide into your wall with a minimum height of 58 mm. Any gaps caused by uneven floor installation are sealed with pile brush hidden behind the cover profile.

SLIMLINE
premium architectural profiles



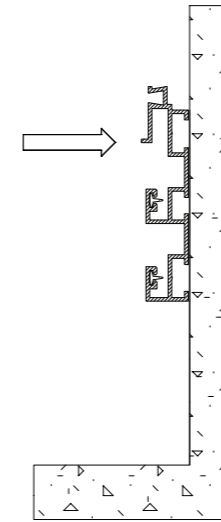
All internal and external corner joints are angle cut to 45° for a clean line from floor to ceiling.



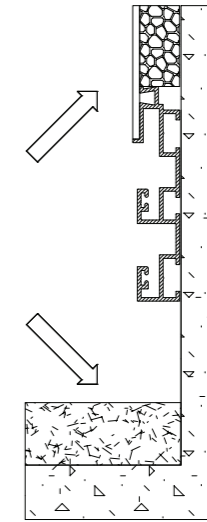
TECHNICAL DETAILS



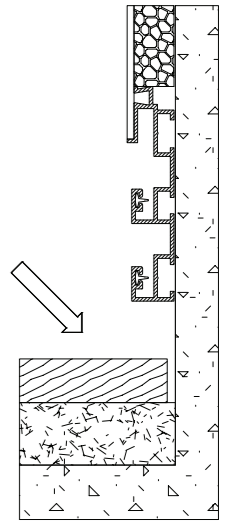
A1



A2

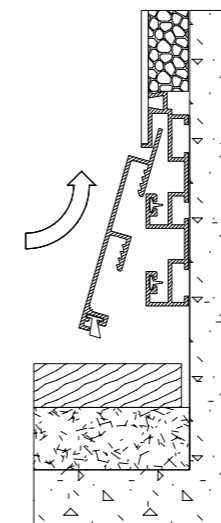


A3

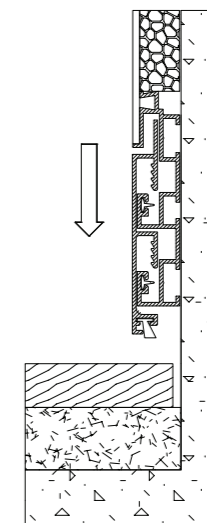


Phase A of installation starts at the beginning of your home build after installation of windows and doors, and before completing sub-floor. **A1** Base profile SM-BB-10 is secured to your wall and leveled with a laser to ensure all remaining floor and wall finishes are perfectly level. **A2** Both wall gypsum board, or equivalent, and sub-floor are installed. **A3** Final floor material is installed with expansion gaps of up-to 12 mm.

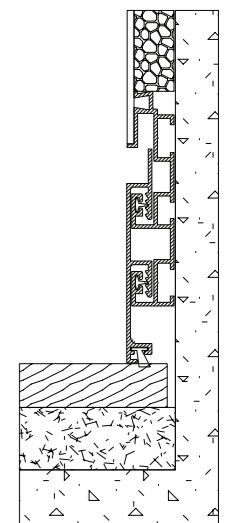
B1



B2



B3



Phase B of final installation occurs at the end of your home build after wall paint and flooring is complete. **B1** Cover profile, SM-BB-20, is inserted into SM-BB-10 on an angle. **B2** The cover profile is compressed to the floor and secured within the hidden ribbed walls. **B3** The cover plate is removable without damage for floor maintenance or repainting.



Vilanova d.o.o.
Ulica borcev za severno mejo 52
1000 Ljubljana
Slovenia

www.vilanovagroup.com
info@vilanovagroup.com

