



Introduction to the Workforce Investment Act

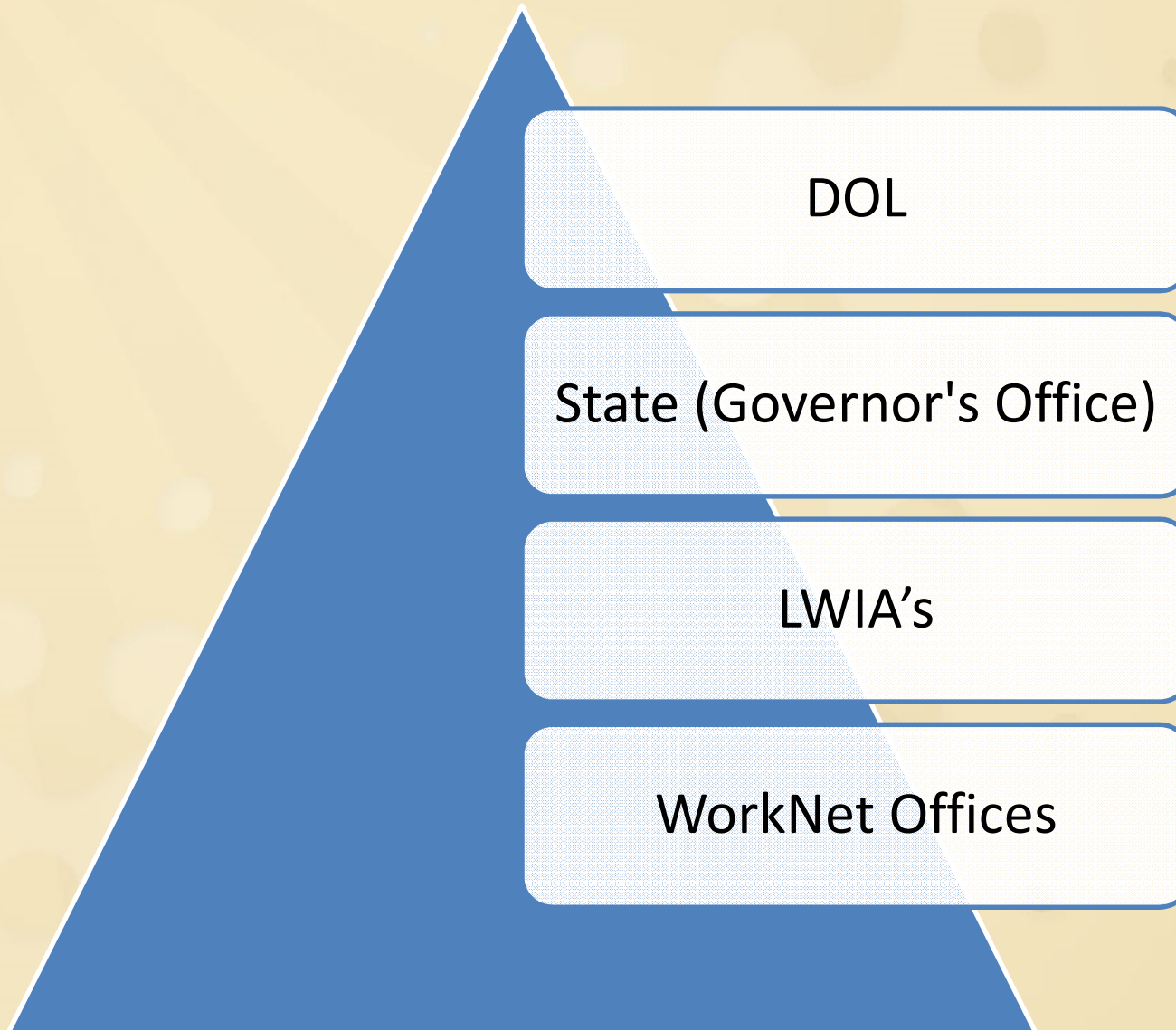
Agenda

- **Training Grant and Job Planning Overview**
 - What is WIA?
 - How does one qualify?
 - Training options
 - Next steps
 - Job planning tool
 - Q & A

WIA Program Overview

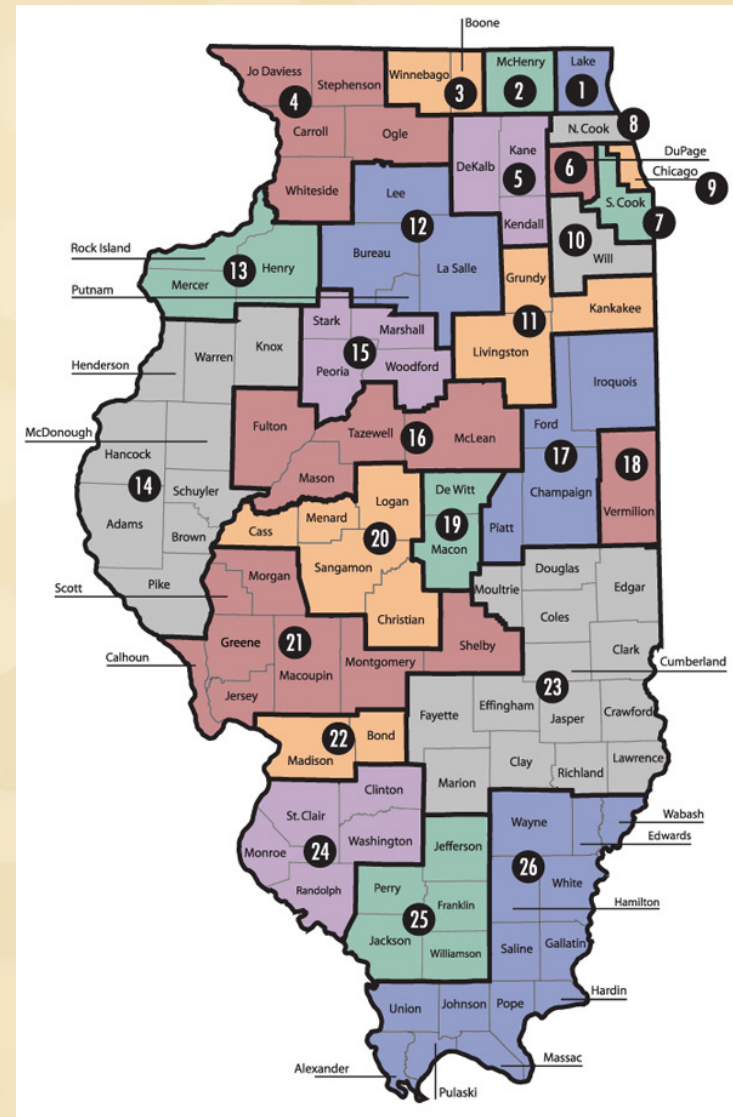
- **What is WIA?**
 - Federally-Funded Job Training Program
 - Services through Illinois WorkNet™
- **3 Levels of service available**
 - Core Services (Initial Assessment)
 - Intensive Services (Comprehensive Assessment)
 - Training Services (Job Readiness Training)

How the Funding Works

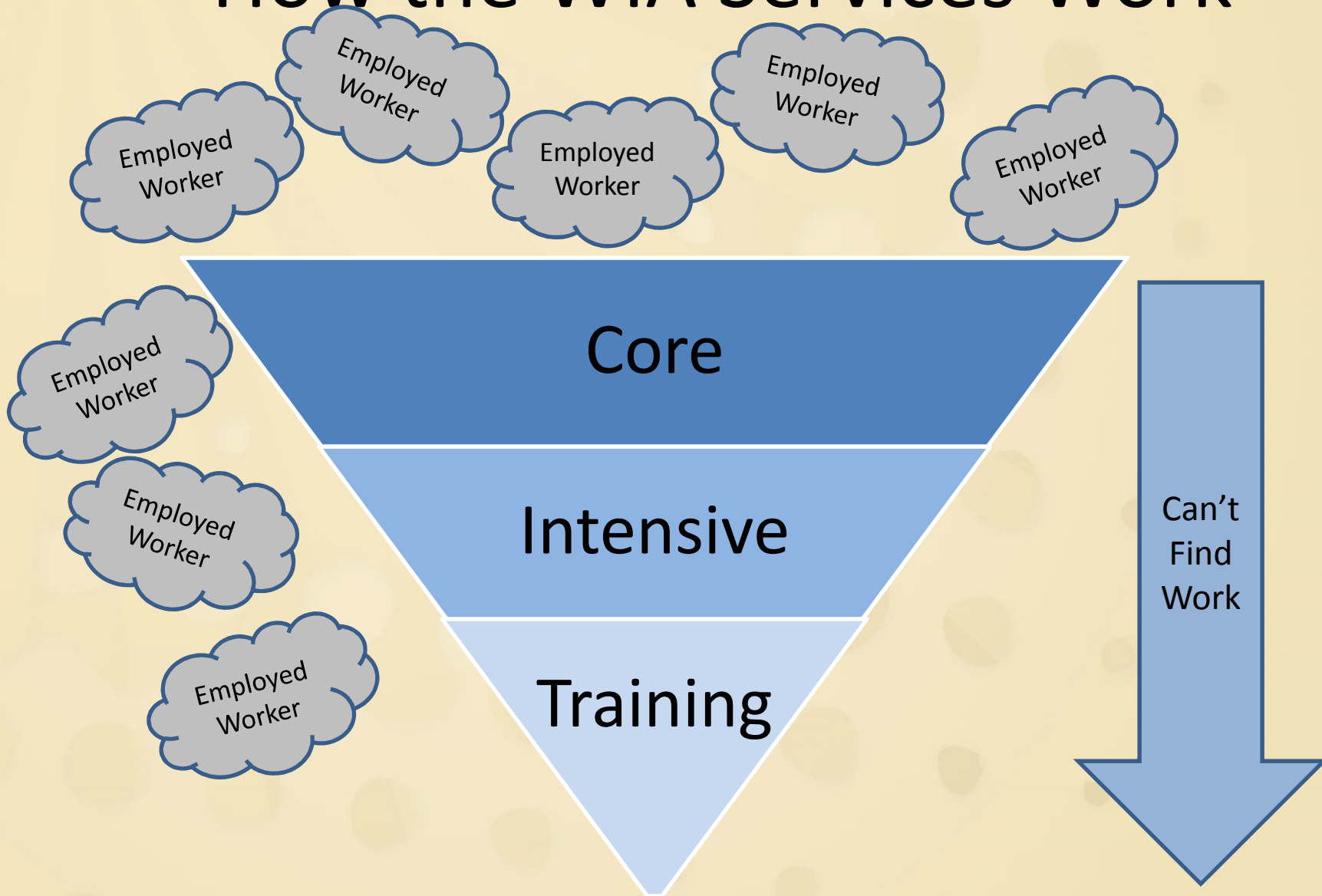


Local Workforce Investment Area's

- Throughout Illinois, there are 24 Local Workforce Investment Areas (LWIA's)
- Each of these are governed by a board made up of
 - 51% private businesses
 - 49% community agencies
- These boards decide how WIA funding is spent locally



How the WIA Services Work



How Does One Qualify For WIA?

- **Two Ways to Qualify for Adults:**
 - Adult (1A)
 - Low income, no income, or underemployed
 - Dislocated Worker (1D)
 - Collecting unemployment insurance
- **Training Funding Availability**
 - Anywhere from \$5,000 - \$10,000 dependant upon local training dollar cap
 - TAA funding averages \$10,000 per year (2 yrs max)

Job Planning

- **What is Critical Path?**
 - Your path to getting hired
 - Find and manage job leads
- **Workshops**
 - Resume and Interview planning
 - Private hiring events

Our Process - Creating a Marketable Consultant



Training Programs

- **Certification Training Programs Available Include:**
 - Project Management (PMP)
 - Microsoft Technical (MCITP, etc.)
 - Cisco Technical (CCNA, etc.)
 - Microsoft Business (MS Office, SharePoint, etc.)
 - Many more available programs
- **What's included in the training cost?**
 - Courseware, Certification testing, Career Services

Training Comparison

- **Additional Services**

- Practice Testing Software (SelfTestSoftware.com)
- E-learning, Online Training (CBTnuggets.com)
- Dedicated Customer Service
- Client Coordinated Study Groups – Peer Review

- **Training Provider Caveat**

- Researching training schools, due diligence

The Next Step?

- **Meet with a MicroTrain Program Director**
 - Initial consultation to discuss eligibility
 - Visit local WorkNet office
 - Review training programs available and provide a recommendations for training (Training Plan)
 - WHY? Jumpstarts your application, saves time and shows initiative to the local WIA office your seriousness