



Copyright © 2017
Frank Betz Associates

LAVISTA PARK

1st Floor:	2276 sf
2nd Floor:	804 sf
Total:	3080 sf
Opt. Bonus:	335 sf
Overall Dimensions:	62'-6" x 73'-0"

The Lavista Park plan, a perfect blend of Old World details and modern styling. A combination of depth and complex roof lines create an interesting façade. The mixed use of materials also adds to the limitless possibilities for the finished product. Painted or washed brick, shakes, and board-and-batten siding are the chosen exterior materials which allow for many diverse color palates. Timber lintels, gable brackets and slatted shutters complete the façade. The unique footprint is purposefully designed so that the home may be placed on different sites such as cul-de-sac or corner lots while maintaining the side entry garage. Once inside a completely modern style of living awaits. The grand island kitchen anchors the living areas opening on to a family room with a cozy fireplace and built-in cabinetry and a large dining room. A three season screened porch as well as a covered porch add living space to enjoy the outdoors and take advantage of any view that may be available. The master suite is conveniently located rearward for ultimate privacy and includes a spa bath and large walk-in closet. A guest suite with a private bath rounds out the lower level. The flexible space could double as an office for the telecommuter. The upper level holds two additional bedroom suites and a multi-purpose bonus space.



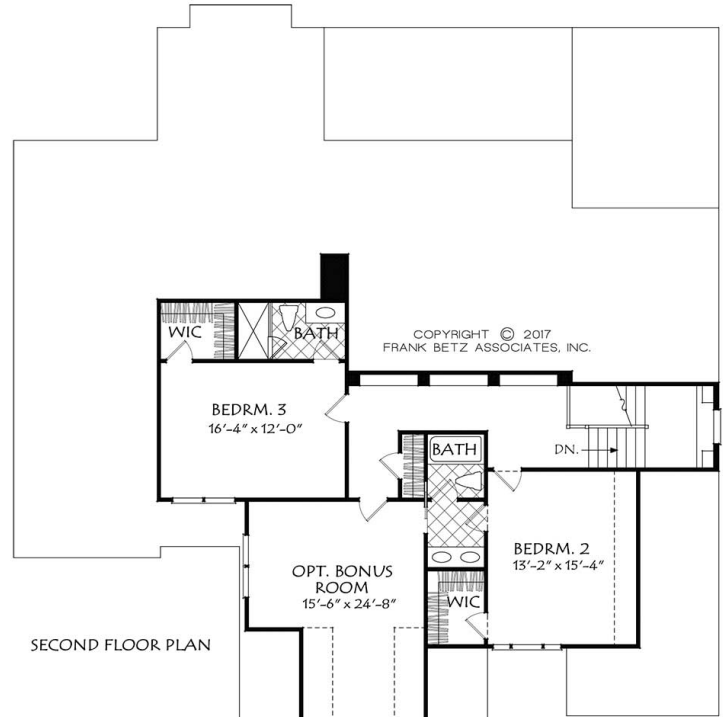
frankbetzhouseplans.com
888-717-3003



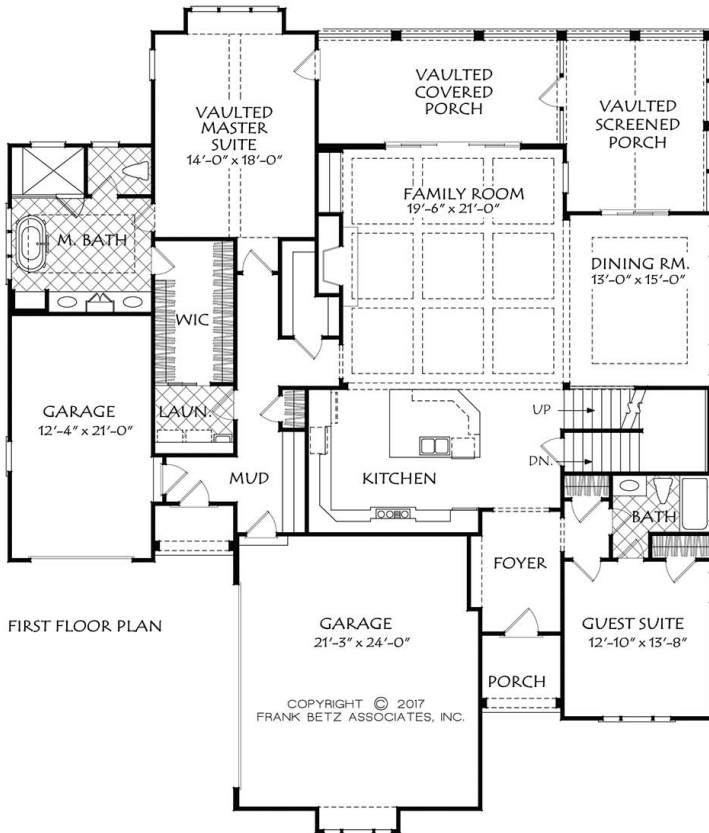


LAVISTA PARK FLOOR PLANS

Copyright © 2017
Frank Betz Associates



SECOND FLOOR PLAN



FIRST FLOOR PLAN

Disclaimer: Floor plans and Elevations are subject to change. Floor plan dimensions are approximate. Consult working drawings for actual dimensions and information. Elevations are artists' conceptions.

