



Copyright © 2020
Frank Betz Associat

MADISON PARK

1st Floor:	1941 sf
2nd Floor:	770 sf
Total:	2711 sf
Opt. Bonus:	344 sf
Overall Dimensions:	50'-0" x 73'-5"

Simplistic lines and a neutral color palette define this modern design and allow the accent materials and details to come alive. Timber lintels and columns in a dark stain contrast with the white cladding. Shed dormers add interest and provide natural light to the interior. Board-and-batten siding along with painted brick are the base materials of choice and are understated. The main level is fresh and modern with features galore such as the master suite, open concept living and dining space and a fully appointed kitchen. The guest suite and/or home office is perfectly located for quiet and privacy for the telecommuter or visiting family member. Storage is well thought out with the use of walk-in closets, large pantry, mud room, and laundry space. The rear covered porch adds extra living and dining area which let the owners get outdoors when the seasons cooperate. The upper level completes the home with two additional sleeping rooms, a compartmentalized bath and loft - perfect for reading, homework or just relaxing. The optional bonus room can be finished to add square footage that has many uses - recreation, exercise, media or great storage.



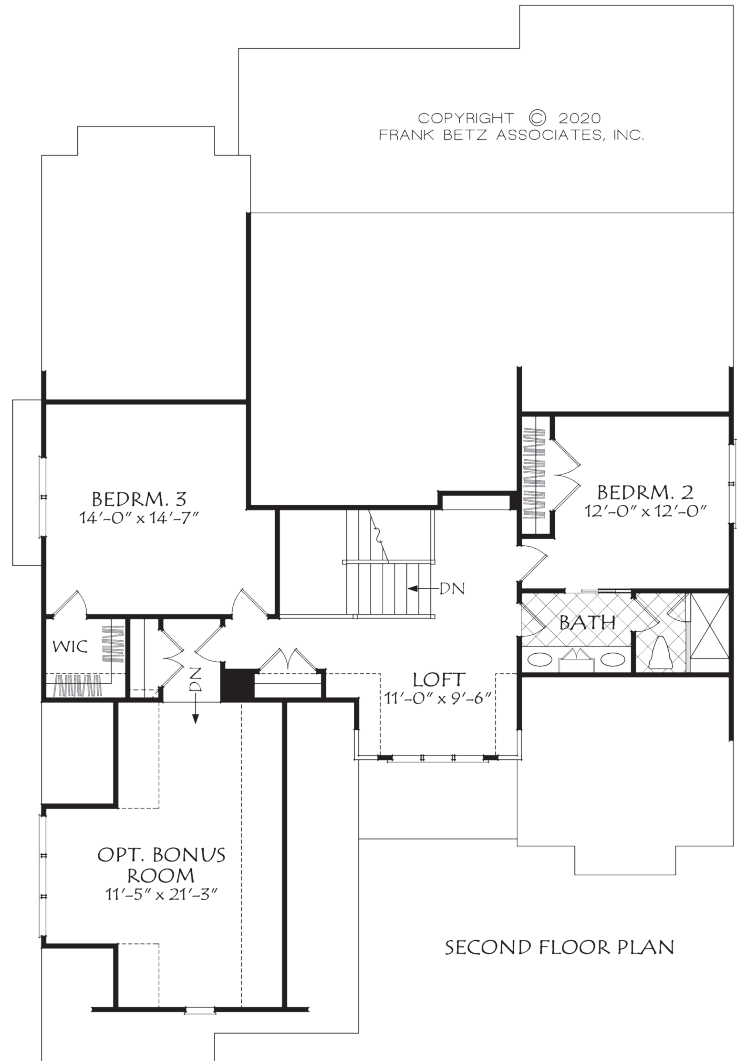
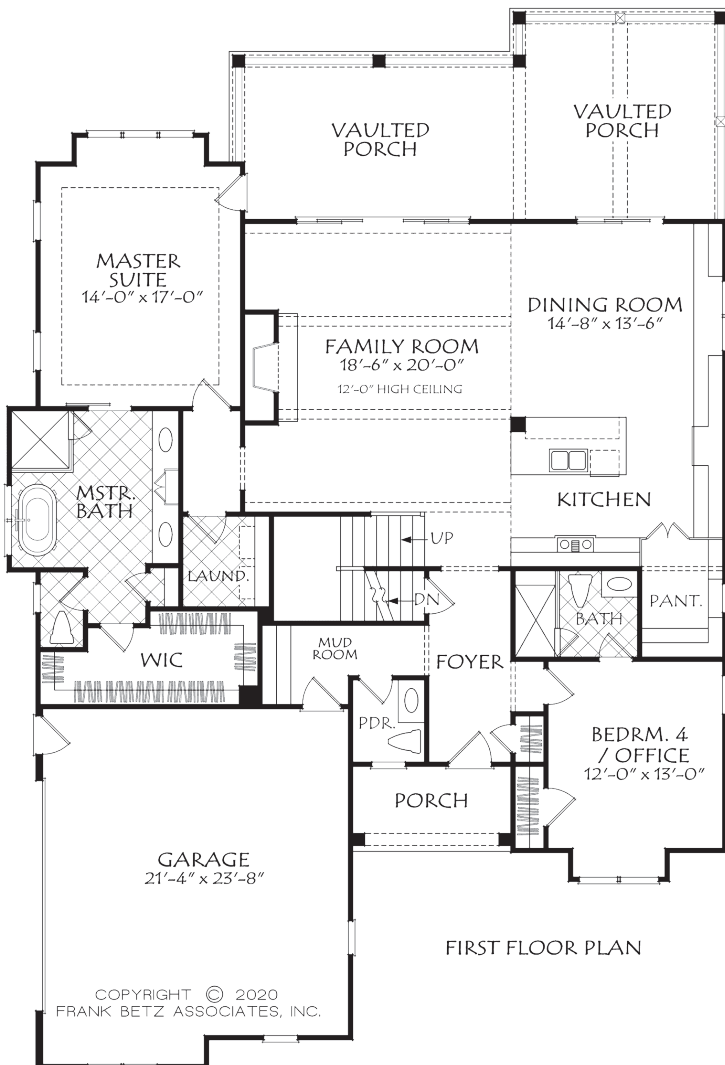
**FRANK BETZ
ASSOCIATES**

frankbetzhouseplans.com
888-717-3003





MADSION PARK FLOOR PLANS



Disclaimer: Floor plans and Elevations are subject to change. Floor plan dimensions are approximate. Consult working drawings for actual dimensions and information. Elevations are artists' conceptions.

