

STILESBORO

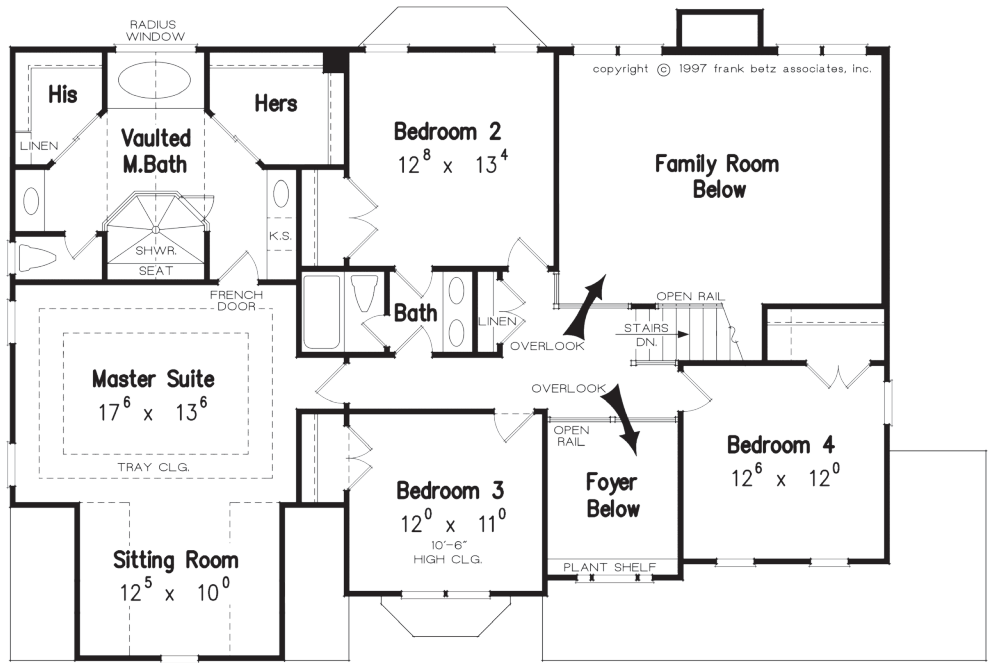
1st Floor:	1438 sf
2nd Floor:	1395 sf
Total:	2833 sf
Overall Dimensions:	60'-6" x 40'-6"

After a day away, it will be a pleasure to come home to this four- or five-bedroom home. The two-story foyer, which is flanked by the formal dining and living rooms, leads straight ahead to the two-story family room. This room features a fireplace and decorative columns, which separate the family room from the kitchen and breakfast nook. The lavish master suite and the remaining three bedrooms are on the second floor. A private rear study on the first floor can be used for a fifth bedroom with its own full bath.

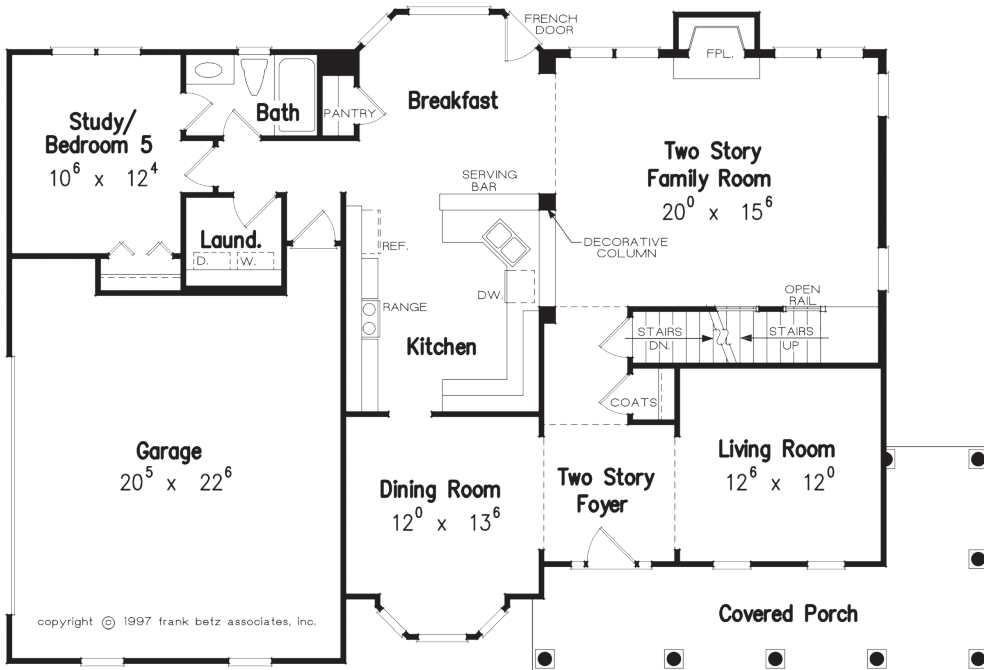




STILESBORO FLOOR PLANS



SECOND FLOOR PLAN



FIRST FLOOR PLAN

Disclaimer: Floor plans and Elevations are subject to change. Floor plan dimensions are approximate. Consult working drawings for actual dimensions and information. Elevations are artists' conceptions.

