

PM219 Electronic Digital Pressure Sensor

MAIN FEATURES

- The 4 digit number shows the current pressure value.
- The shell is equipped with node action led for easy observation
- Key adjustment and field setting of various parameters
- Support analog output (4-20mA) or digital RS485 output
- Compact structure for limited installation space
- Imported chip to get high accuracy (Max.0.1%)



OVERVIEW

PM219 series pressure sensor is a measurement and control component integrating pressure measurement and control. This series of products mainly use silicon piezoresistive pressure sensors as the pressure sensitive core, and can also be equipped with pressure sensors such as ceramic capacitors, sapphire, and sputtering films. After programmable digital circuit correction and signal conditioning, they can output standard industrial application signals and switches.

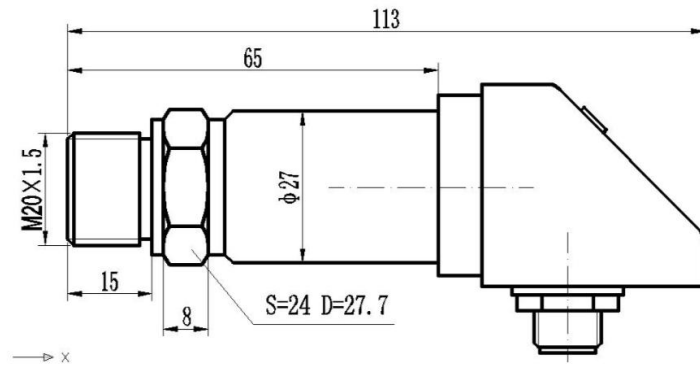
PM219 series pressure sensor faithfully serves various fluid measurement industries with its excellent performance. Especially in water treatment, power, medicine, and other industries, it has good adaptability and application advantages.

SPECIFICATION

Items	Parameter
Range	-0.1MPa...0kPa~10kPa...100MPa
Overload capability	Below 10MPa \leq 2 times full scale, 10MPa and above \leq 1.5 times full scale
Pressure Type	G (gauge pressure), A (absolute pressure), S (sealed gauge pressure)
Accuracy	0.1% (custom), 0.25% (typical), 0.5% (maximum)
Long-term stability	\pm 0.1%FS/year (typical), \pm 0.2%FS/year (maximum)
Zero temperature drift	\pm 0.03%FS/ $^{\circ}$ C (\leq 100kPa), \pm 0.02%FS/ $^{\circ}$ C ($>$ 100kPa)
Sensitivity temperature drift	\pm 0.03%FS/ $^{\circ}$ C (\leq 100kPa), \pm 0.02%FS/ $^{\circ}$ C ($>$ 100kPa)
Compensation temperature	0 $^{\circ}$ C~50 $^{\circ}$ C(\leq 100kPa), -10 $^{\circ}$ C~70 $^{\circ}$ C($>$ 100kPa)
Working temperature	-40 $^{\circ}$ C~80 $^{\circ}$ C
Power supply	12~ 30V
Live display	4-digit LED or LCD
Output Signal	Analog, digital RS485 or customized
Protection level	IP66

DIMENSION

Unit: mm



ELECTRIC CONNECTION



Optional accessories – electrical accessories

name	Outline drawing/dimension drawing (mm)	material	model	M12* 1-4pin /5Pin self-connector/size drawing (mm)	model
M12*1-5Pin (2m cable)		PUR	ZL05-PU02G		GL04 (4Pin joint)
M12*1-5Pin (5m cable)			ZL05-PU05G		
M12*1-5Pin (10m cable)		PVC	ZL05-PU010G		GL05 (5Pin joint)
M12*1-5Pin (2m cable)			ZL05-PC02G		
M12*1-5Pin (5m cable)			ZL05-PC05G		
M12*1-5Pin (10m cable)		PUR	ZL05-PC010G		WL04 (4Pin joint)
M12*1-5Pin (2m cable)			ZL05-PU02W		
M12*1-5Pin (5m cable)			ZL05-PU05W		
M12*1-5Pin (10m cable)			ZL05-PU010W		
M12*1-5Pin (10m cable)		PVC	ZL05-PC02W		WL05 (5Pin joint)
M12*1-5Pin (10m cable)			ZL05-PC05W		
M12*1-5Pin (10m cable)			ZL05-PC010W		

ORDER CODE

Code:	A	-	B	-	C	-	D	-	E	-	F	-	G
PM219	A	-	M	-	0-50bar	-	S	-	S	-	G 1/2	-	2S

Model type	Code A
Standard type	A
Hygienic type	C
Differential pressure type	D
Electric connection type	Code B
Hirschmann connector	H
M12 connector	M
Aviation plug	A
More customized	C
Pressure Range(X=specific range)	Code C
-1Bar ~1000Bar (standard type)	X Bar
-1Bar ~60Bar(Hygienic type)	X Bar
0Bar ~25Bar(DP type)	X Bar
Accuracy	Code D
0.1% (custom)	C
0.25%(typical)	T
0.5%(standard)	S
Interface material	Code E
SS304	S
SS316L	L
Other customized	C

Process connection	Code F
G1/2	G1/2
M20*1.5	M20
G1/4	G1/4
G1/8	G1/8
1/2NPT	1/2NPT
3/8NPT	3/8NPT
1/4NPT	1/4NPT
1/4PT	1/4PT
1/8NPT	1/8NPT
1.5 inch chuck (outer diameter 50.5mm)	
2 inch chuck (outer diameter 64mm)	
DN25 flange (GB/T)	
DN50 flange (GB/T)	
Diaphragm type G1 male thread	
More customized	C
Output	Code G
mA output (0...20/4...20mA)	2A
Voltage output(0...5/1...5V)	5V
Voltage output(0...10/1...10V)	10V
RS485	R