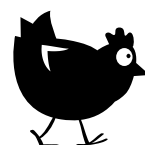




**LESS FLOOR-EGGS
MORE HATCHED-EGGS
MORE PROFITABILITY
PROVEN RESULTS**

Spoutnic



TIBOT
TECHNOLOGIES

PIONEER IN POULTRY ROBOTICS



HOW SPOUTNIC LOWERS FLOOR-EGG RATES

By **circulating 7 days a week** inside the house, Spoutnic gets the flock moving and encourages hens to lay in the nests. Over time, it trains them to develop good habits. By limiting the number of floor-eggs, Spoutnic helps **reduce the work of gathering downgraded eggs**. And of course, less floor eggs means **less antibiotics for chicks in good health**.

THE BREEDER'S TIRELESS ASSISTANT

Spoutnic does not replace the breeder but rather **optimizes their daily work**. The robot continually walks the floor according to a configurable schedule, **saving you time** so you can concentrate on other added-value tasks.

PLUG AND PLAY

Spoutnic is **easy** to use and requires **no installation or specific configuration**. Spoutnic moves randomly and **independently** throughout the poultry house. If it encounters an obstacle (wall, nest, hopper base, chicken corpse, etc.), it detects and manoeuvres around it.



SPOUTNIC STIMULATES WITHOUT CREATING STRESS

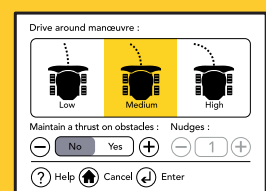
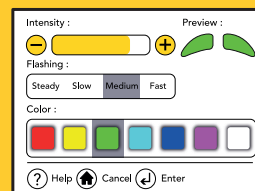
Developed in collaboration with **specialists in robot-animal interactions**, Spoutnic produces **light and sound stimuli** which prevent the birds from growing accustomed to its presence. The robot comes with accessories so you can customize the robot's functionalities and boost the activity of your flock.



CUSTOMIZABLE TO SUIT YOUR ENVIRONMENT

Thanks to the customization controller, you can adapt your robot to the specificities of your poultry house.

- Hourly programming
 - Stimuli settings
 - Select turning angle and number of nudges
 - Other setting options are also available : software updates, language choice, etc.
- You can benefit from the robot's latest developments in real time !



MORE PROFITABILITY, PROVEN RESULTS !

Spoutnic has proven its effectiveness in layers and breeders. **It reduces floor-eggs by 26 % in only 2 weeks and cut the grower's walkthroughs by half.**

-26%
floor-eggs



« With Spoutnic, it's as if I always have an available assistant in the poultry house. Thanks to the robot, I do less walkthroughs and the number of floor-eggs is lower. »

**Laetitia SAVARY, breeder poultry farmer
(Mayenne, France)**

Spoutnic



TECHNICAL DATA

Trajectory	Navigates randomly. Detects and bypasses obstacles
Speed	6 speeds (adapts to each flock)
Dimensions	25 x 23 x 7,5 in. Compact size to move under feed equipment
Autonomy	10 hours of autonomy, lithium battery
Weight	12 kg / 26 lbs
Stimuli	Visual, sound and mechanical
Protection	Water-, dust- and ammonia-resistant
Power	4-wheel drive for any type of litter
Other	Customization controller

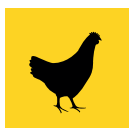


Designed and
manufactured in France



There are currently more than
hundred Spoutnic robots operating
worldwide

TANGIBLE BENEFITS FOR YOUR FARM

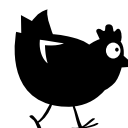


- Increase your farm's profitability
- Enhance animal welfare
- Improve working conditions

The TIBOT technology company is a pioneer in poultry robotics.
It aims to support farmers in the success of each flock.



Avian Management Services Pty Ltd.
2/8 Campus Street, Indooroopilly, Queensland
1300 2TIBOT - 0474035680
tugrul@avianmanagement.com.au
www.avianmanagement.com.au



TIBOT
TECHNOLOGIES

PIONEER IN POULTRY ROBOTICS