

Partnered with



Galveston Lighthouse Productions
Proudly Presents

Partnered with



GALVESTON *Wind*

An Original Play Written by
John Meiners Jr.

Directed by Samuel Gorashko

For the 125th Anniversary of the 1900 Storm
At Galveston's Historic
Scottish Rite Cathedral

September 9 - 13, 2025

More information can be found at

www.GLPinc.net

Storm of Supporters



WE ARE PROUD TO SERVE

GALVESTON

and 23 other locations along the Texas Gulf Coast.

Stop in today to learn more about how we can help you.

- ☑ Cash BackChecking
- ☑ Home & Auto Loans
- ☑ SBA Loans
- ☑ Commercial Financing
- ☑ Treasury Management Solutions



Your Galveston-Broadway Team



**2401 Broadway/Avenue J
281-997-9600**



**13701 Termini-San Luis Pass Rd
281-648-5626**



**6501 Stewart Rd
281-648-5626**

www.texasfirst.bank

Partnered with



Galveston Lighthouse Productions
Proudly Presents

Partnered with



GALVESTON WIND

Story of the Great Disaster in the Gulf

Written by John Meiners Jr.

Directed by Samuel Gorashko

September, 2025 – Galveston, Texas

Galveston Wind is a historical drama set during the devastating Galveston Hurricane of 1900, one of the deadliest natural disasters in American history. The play weaves together a fictional love story against the backdrop of this catastrophic event, exploring the lives of several characters whose fates are intertwined by the storm.



The story centers around **Anna Marie Thayer**, a headmistress at a girls' school, and her growing romance with widowed attorney **Charles Beaujeaux**. As the two families—Thayer's and Beaujeaux's—navigate love, loss, and family dynamics, the young girls, **Charlotte Thayer** and **Mary Beaujeaux**, experience their own budding romances with two German immigrant brothers, **Anton and Frederick Brenner**. As the storm approaches, these characters find themselves caught in the chaos of an event they cannot control. Amidst the backdrop of this natural disaster, themes of love, survival, and grief unfold. The play poignantly portrays the strength of the human spirit as the survivors work through grief and trauma in the aftermath, creating new hope and connections amidst the wreckage. Blending historical facts with fictional elements, *Galveston Wind* honors the real-life victims of the 1900 hurricane while showcasing the personal and emotional journeys of those caught in the storm's wake. It's a powerful exploration of love, family, and resilience in the face of unimaginable tragedy.



See all information at www.GLPinc.net

Letter from the Director



Dear Cast, Crew, Families, and Friends,

As we bring Galveston Wind to life in honor of the 125th anniversary of the Great Storm of 1900, my heart is filled with gratitude and awe. This production is more than a retelling of history—it's a living tribute to the resilience of our city, the legacy of those lost, and the power of community united through art.

First and foremost, thank you to our incredible actors. Your dedication, talent, and heart have breathed life into John Meiners Jr.'s powerful script, capturing not only the historical significance of the storm and his family's story, but also John's enduring legacy as a storyteller. We are honored to bring this story to life once again on the anniversary of one of the greatest natural disasters in our nation's history. I know John is with us tonight, proud of each of you and your hard work. A heartfelt thank you to Pattie Meiners for allowing us to share John's story once more. "Cherish these memories in your heart as we can build no more." – Anna

Marie Thayer

To our crew, parents, families, and friends—thank you. Your support, carpools, late nights, meals, and behind-the-scenes efforts helped build this show from the ground up. It has truly been a labor of love. We have made new long-lasting friendships through this process that I know will stand the test of time. We are blessed to share this moment with our beautiful community, whose support made this dream a reality. To our sponsors and underwriters, what can I say? A simple thank you just doesn't feel like quite enough. Your belief in preserving history through the arts is deeply appreciated, more than you will ever know, and this production would not have been possible without you!

I want to extend a very special thank you to The Bryan Museum for partnering with us and preserving the stories that shape our history. To the Galveston Theater Arts Partnership (GTAP), thank you for the generous use of the stunning Scottish Rite Cathedral—your space has become sacred ground where history meets performance and art.

To my loving husband, Justin, and our son, Connor—your love, patience, and encouragement have made it possible for me to pursue this passion. You are my greatest blessings and strongest supporters.

This production is a heartfelt offering—to Galveston, to history, and to the strength of community. May it remind us of where we've come from and inspire us to move forward with grace, courage, and unity.

With love and appreciation,

Samuel Gorashko
Director

Partnered with



Galveston Lighthouse Productions
Proudly Presents

Partnered with



From Vision to Stage Reality

In 2021, director Sam Gorashko and playwright John Meiners Jr. brought Galveston Wind to life. That production was so beloved it earned an Encore performance at the historic Scottish Rite



Cathedral in Galveston. Now, in honor of the 125th anniversary of the 1900 storm & in memory of John Meiners Jr., Galveston Lighthouse Productions (GLP) is reviving this heartfelt show. This revival has been a true community effort. Thanks to the generosity of partners like Keith Bassett, who offered us invaluable rehearsal space, & the Galveston Theater Arts Partnership (GTAP),



we've brought together a dedicated team. It has truly taken a village to build this production, & the gratitude we feel toward everyone who has stepped forward to help is overwhelming. From rehearsal halls to backstage support, each contribution has shaped this show into something extraordinary. As we approach opening night, this production is more than just a show—it's a tribute to a legacy, a labor of love, & a true testament to the power of our Galveston arts community. We can't wait to share it with you at the Scottish Rite Cathedral.



The Legend of a Playwright

John Meiners Jr. was the playwright of Galveston Wind, an original work inspired by the stories of the 1900 Galveston Hurricane. A Texan with a deep love for history, John poured his passion into writing a play that would preserve the memory of those lost and honor the resilience of the community. Since first developing the script in 2021, he continued to refine it with dedication, always keeping its heart rooted in remembrance and hope.

Though John has since passed, his legacy lives on through Galveston Wind and the voices it gives to history. His work stands as a reminder of the power of storytelling to connect generations, inspire compassion, and ensure that the lessons of the past are never forgotten.



See all information at www.GLPinc.net

Rudy & Paco



Lunch Hours: Monday - Friday 11am to 2pm
Dinner Hours: Monday - Thursday 5pm to 9pm;
Friday & Saturday 5pm to 10pm
For Reservations please call 409.762.3696
or visit rudyandpaco.com

VARGAS

CUT & CATCH *by Paco*



Tuesday – Saturday 5PM to 9PM

For Reservations please call 409.762.2101
or visit vargascutandcatch.com

CONGRATULATIONS

Ebie and Vivian, on your outstanding hard work in Galveston Lighthouse Production's *Galveston Wind*.



For the 125th Anniversary of the 1900 Storm
At Galveston's Historic Scottish Rite Cathedral

September 9 - 13, 2025

In Partnership with
Galveston Theater & Arts Partnership & The Bryan Museum

Harbor Offshore is proud to support
Galveston arts and to serve as an
underwriter in *Galveston Wind*.



BASSETT

... FAMILY ...

INVESTMENT GROUP

SALT WATER SOUL

Gracie's



APPAREL



GALVESTON ISLAND
dry goods company



CENTRAL HOTEL LOFTS

The Bassett Family Investment Group is a family owned local business with a long history of community involvement and investment.

Our retail establishments and historic loft conversions serve the needs of both residents and businesses – from hardware, to unique gifts, to promoting your sports team, organization or business with embroidered apparel.

Our family business continues to grow and prosper and we owe our success to you, our customers.

Keith & Genette Bassett • Mark and Mary Beth Bassett

S U P P O R T L O C A L

Let us cater
your next
event,
big or small.
Email us
today!



GOOD
DOUGH

TRADITIONAL CZECH • TEXAS STYLE KOLACHES



TAKE & GO MEALS • SWEETS & TREATS



GROUP • PRIVATE CLASSES

See all information at www.GLPinc.net

CHEFMARYBASS@GMAIL.COM

WWW.CHEFMARYBASS.COM

1506 39TH ST GALVESTON, TX

Storm of Supporters



Address: 8519 North Farm to
Market 565 Road,
Baytown, TX 77523

Phone: (281) 608-4767

Menu: crawfishhideaway.com

Address: 2007 N Main St,
Baytown, TX 77520

Phone: (832) 572-6267

Menu: dirtydaiquiri.com



APPAREL

Address: 117 S Wilson St
Vinita, Ok, 74301

Phone: (918) 256-8573

Site: 66apparel.com

The Cast & Crew

Jean Luchsinger *Anna Mary Thayer*



JEAN LAUBACH (Anna Marie) is thrilled to be apart of GLP. Born & raised in Clear Lake, at age 4 she started with tech, moving her way to the stage & directing. She loves to perform & to transform bringing Art to life. She'd like to thank her Husband and Kelly for believing in her. She loves you both!

Vivian Ortiz *Mary Beaujoux*

Vivian is a 7th-grade student at Trinity Episcopal School & a proud 6th-generation Galvestonian. She is thrilled to play Mary Beaujoux in Galveston Wind & work with such an incredible cast & crew. Her past credits include Aladdin Jr., Newsies Jr., Beauty & the Beast Jr., & The Emperor's New Clothes at The Grand. Outside of theater, Vivian enjoys soccer, volleyball, reading, writing, piano, guitar, & spending time with family & friends. She is grateful to her family for their support, the production team for this opportunity, & especially her mom for getting her to every rehearsal!



CJ Choudhry *Charlotte Thayer*

With recurring roles in The Polar Express, Missoula Children's Theatre, & Island ETC student productions, Leila is excited to take on her most demanding part yet as Charlotte Thayer. From modeling in Spongebob Squarepants Adventure at Moody Gardens, auditioning for a Netflix horror series, to sharing her fluent Italian in The International Holocaust Project's video, she loves acting as a way to "enjoy the immersive experience of being & bringing a character to life." Fascinated by animals & their unique personalities, she often spends free time on animal adventures. Leila thanks her mother, Chiara, for the love & encouragement shown every step of the way.

Jonathan Crummett *Charles Beaujoux*

Jonathan is an art and theater teacher at O'Connell College Preparatory School and an actor with a passion for bringing local history to life. He is a member of the board of directors for Galveston Lighthouse Productions, and is honored to be portraying Charles Beaujoux, the esteemed lawyer, in this production of Galveston Wind.



Jarrold Keeling *Hector Lambert*

Jarrold Keeling is honored to be a part of Galveston Lighthouse Productions' staging of Galveston Wind. Along with his lovely wife, Nikki, Jarrod is a long-time patron of the performing arts. Community theatre aficionados may recognize him from previous productions of Strangers on a Train, Arsenic and Old Lace, Our Town, and many others. Galveston Wind, however, holds a special place in Jarrod's heart, as its message of collective unity and resolve in the face of profound adversity is more relevant than ever before. This performance is dedicated to all of our friends and family in Central Texas, as they continue to rebuild and recover from this summer's devastating flooding.



See all information at www.GLPinc.net

The Cast & Crew

Jasmine Garner *Julia Hartley*

As a proud B.O.I, Jasmine is excited to be on stage as Julia Hartley for GLP's production of Galveston Wind. Having made her stage debut as Idella Landy in Galveston Lighthouse Productions Purlie Victorious then having the opportunity to work as Production Assistant/Assistant Stage Manager for GLP's beautiful production of Steel Magnolias, she looks forward to her continuation of growth within the theatre community. Jasmine would like to give a huge thank you to her family, friends, and to Sam for continuing to be a shining light and teacher.



Alina Stuckey *Louise Hansen*

Alina is thrilled that Galveston Wind will be her first theatrical performance as Miss Louise Hansen. Her experience with theater until now has been an adoration for Liza Minnelli and being blind mice #2 in Shrek the Musical circa 2016. She is a Galveston born, florist by trade, a lover of music, history and the natural world. She was introduced to Galveston Lighthouse Productions team one evening while bartending at The Proletariat Gallery & Public House, a lighthouse in its own right. She intends to continue to explore this medium as a form of self expression and story telling. She wants to thank her friends and family for their endless love and encouragement.



Sofia Kolev *Lily Hansen*

Sofia Kolev is 8 years old & a proud third grader at OPPE Elementary in Galveston. She is excited to make her theatrical debut as Lilly, a young girl who, along with her family, perishes in the 1900 Hurricane—the deadliest storm in U.S. history. Though new to theater, Sofia has performed with Galveston Ballet since age three, with featured roles in The Wizard of Oz, Don Quixote, The Nutcracker Suites, Sleeping Beauty, & more. Outside the spotlight, she is outgoing & playful, loves dancing, creating art, spending time with animals, exploring the outdoors, riding her bike, & playing basketball. Born & raised in Galveston to parents from Macedonia, Sofia speaks English & Macedonian fluently & takes pride in her heritage. She is grateful to her family & castmates for their love & support, & for the opportunity to be part of this special 125-year anniversary commemoration.



Gabriel Rowland *Anton Brenner*

I am excited to bring life to the character Anton Brenner in this wonderful production of Galveston Wind. When first starting this play I didn't think it would come to this, everyday I acted it was so much fun and this brought me so much joy and I can't wait for you all to experience this show. I can't thank my family, Sam and Cj and everyone else enough for everything that they have done for me. I seriously don't think I would be where I'm at right now if I didn't do this.

Dino Bulikj *Frederick Brenner*

Dino Jon Bulikj has been working with the Galveston Lighthouse Theater Productions since July & looks to playing the character Frederick Brenner. Originally from the country of Macedonia, he has been living in the United States for half of his life. Having moved to Galveston two years ago, he is excited to be a part of Galveston Lighthouse Theatre Productions, & a part of Galveston Wind. He is more than proud to be a part of Galveston history & to honor the many lives that were lost to the awful storm.



The Cast & Crew

Samuel Gorashko *Director*

Sam has been a part of the theater world for over 24 years, contributing to numerous shows across multiple theaters, with the Baytown Little Theater serving as his artistic home. His extensive experience encompasses both onstage and backstage roles, making him a versatile and dedicated theater practitioner. Currently, Sam is embarking on an exciting new chapter as the founder, President, and Artistic Director of Galveston Lighthouse Productions Inc. The creation and launch of GLP have been life-changing for him, and he is deeply thrilled to lead the company's inaugural season. Galveston Lighthouse Productions mission is to shine a bright light on the City of Galveston and surrounding communities and help to build bonds between all artforms. Sam extends his heartfelt thanks to his family and friends for their love and support throughout this journey. He credits the unwavering encouragement of his loving husband, Justin Gorashko, and their son, Connor Gorashko, as the foundation of his strength and success. They are his pride, his joy, and his everything.

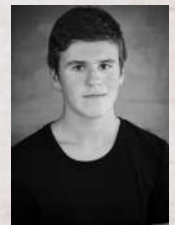


Ebie Ortiz *Productions Assistant*

Ebie Ortiz first heard about Galveston Wind through her mom after a conversation with director Sam. She says the cast's fun, supportive energy makes every rehearsal exciting. The show feels personal since her own family lived through the 1900 Storm. She hopes audiences remember the powerful "Storm" movie scene and the resilience it represents.

Jovan Filipovski *Int'l Theater Assistant*

Jovan Filipovski first heard about Galveston Wind through his best friend and has loved rehearsals with such a supportive cast. He enjoys the scene where Mary and Charlotte drop a book on Frederick's foot and has learned the importance of staying organized. Jovan calls the show "amazing" and hopes audiences remember the faces of the actors who bring it to life.



All GLP information can be found at
www.GLPinc.net



The Production Team

Love Fillius

Marketing Director

Dani Meyer

Properties Mistress

Dooney Waller

Sound

Rebecca De San Andres

Props Asst./ Museum Curator

Mark Davis

Lighting

Trey Lewis

Lighting

Rose Librizzi Davis

Hair/Make-up

Morgan Chambellan

Costumes

Crystal Hart

Head of Box Office

Kim

Costumes

Roy De Gesero

GTAP Liaison to Scottish Rite

Fransico Moreno

Photographer



Galveston Lighthouse Productions would like to give a heartfelt thank you to our partners at Ctrl+Create for their Educational Summer Program, "Voices of the Storm" Workshop. Taking place right here in Galveston, this powerful program connects history, creativity, and community by giving young voices the chance to bring stories of the 1900 Storm to life.

See all information at www.GLPinc.net



GALVESTON REMODELING

Building Dreams, Restoring History

☎ 832-823-9777 🌐 www.galvestonremodeling.com

Proud supporter of the arts and our community.

LEE LAND
HOUSE
GALVESTON

Eat Well

2711 MARKET STREET

Livelocal

Support Galveston

(409) 497 - 2047

a neighborhood bistro that supports the Arts

THE
PROLETARIAT
Gallery and
Public House

Storm of Supporters



**Insurance you need for
the surprises you don't!**



**SMI Agency
1802 Broadway, Ste. 118
Galveston, Texas 77550
409 765 9515**

www.smiagency.com

Home • Fire • Windstorm • Flood • Auto • Commercial • Events

See all information at www.GLPinc.net

How the 1900 Storm Reshaped the City



The Galveston Hurricane of 1900 remains the deadliest natural disaster in U.S. history. Striking on September 8, 1900, it was a Category 4 storm that devastated the coastal city of Galveston, Texas. At the time, Galveston was a bustling port and the largest city in Texas. Despite being aware of the approaching storm, the city was largely unprepared for the sheer power it unleashed. With no accurate forecasting technology, many were unaware of the hurricane's severity until it made landfall, producing 120-mph winds,

torrential rain, and a storm surge that inundated the island. The destruction was immense, as entire neighborhoods were flattened and thousands of homes, businesses, and structures destroyed. The storm surge reached as high as 15 feet in some areas, flooding much of the city and claiming the lives of between 6,000 to 12,000 people, most in Galveston. In the aftermath, survivors faced massive cleanup and rebuilding efforts, leading to improved forecasting, a new seawall, and stronger emergency response systems. The disaster reshaped how cities



prepared for natural disasters, influencing future urban planning and management. The memory of the 1900 storm remains an indelible part of Galveston's history, shaping the community's resilience for generations.



To learn more about the 1900 Storm, visit the **Rosenberg Library Museum**. Its exhibits feature photographs, oral histories, artifacts, and a memorial wall honoring the storm's victims.

See all information at www.GLPinc.net

A Special Thank You

We cannot express enough gratitude to our incredible sponsors for making this production possible. Your generosity and support allow us to bring stories to life, create unforgettable experiences, and share the magic of theater with our community.

Galveston Lighthouse Productions is honored to be sponsored by such amazing individuals and organizations who believe in the power of the arts. Because of you, this show shines even brighter!

From the bottom of our hearts—thank you for standing with us, supporting the arts, and making a difference. We couldn't do it without you!

Season Sponsors

Nelda and Karl Buckman

Galveston Lighthouse Productions is deeply grateful to Nelda and Karl Buckman for their generous support as our Season Sponsors. Their commitment to the arts and to our community helps us continue bringing light to those in the darkness and making productions like Galveston Wind possible.

In partnership with our official partners



**THE BRYAN
MUSEUM**

Thank you for allowing us to produce in the Scottish Rite and contribute to your historic building

A heartfelt thank you to The Bryan Museum for their generous partnership & unwavering support in bringing Galveston Wind to life.



All GLP information can be found at
www.GLPinc.net



Storm of Supporters

KCM

KEMPNER CAPITAL MANAGEMENT, INC.



TEXAS TAIL
DISTILLERY

Bel's
UPHOLSTERY

COMMERCIAL ■ RESIDENTIAL ■ AUTOMOTIVE ■ MARINE

409-974-4570

3615 Broadway - Galveston, Texas 77550

David Tornero - Owner

belirey@comcast.net

www.belsupholstery.com

A huge thank you

to **Charalambous Customer Home and Cabinetry** for their incredible work in helping bring our set to life. Their craftsmanship and support have been vital in building the world of Galveston Wind on stage!

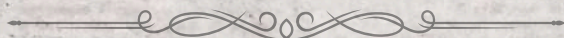
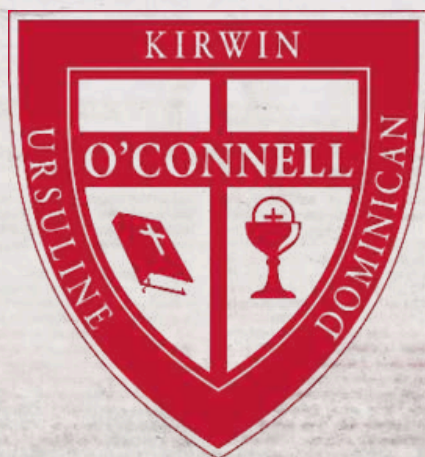
Storm of Supporters



FAST SIGNS.

Make Your Statement™

Galveston - Texas City



Thank you

AV Goat Productions

Galveston Lighthouse Productions is honored to recognize **AV Goat Productions** for their generous donation of lighting & sound equipment in support of Galveston Wind.

This gift is made in memory of *Jeremy Chote*, a renowned Houston lighting designer whose work illuminated countless stages and inspired many in the performing arts community.

We are deeply grateful for this contribution and proud to carry forward his legacy of creativity, artistry, and light.

