An aerial night photograph of a theme park. A large Ferris wheel with blue and red lights is prominent on the right. A roller coaster with a blue track is visible on the left. The park is filled with various rides, buildings, and parking lots, all illuminated by artificial lights. The text "Branson, Missouri" is overlaid in the center in a stylized font.

Branson, Missouri

By Jersey Palmer <3

A photograph of a vast field of tulips in shades of red and white, stretching towards a horizon under a dramatic, cloudy sunset sky. The tulips are in various stages of bloom, and the overall scene is peaceful and scenic.

People going :

- Maddox 15
- Liv 14
- Ella 14
- Jersey 13
- Haiven 13
- Dearien 12
- Calvin 12
- Ezra 12
- Rev 11
- Sway 11
- Isaiah 10
- Thor 10
- Presley 10
- Rosalie 9

Ms. Sheyda 42
Mr. Brian 42
Emma 6
Amen 8

+10 for parents
(13+)

28 people

Silver dollar city $\$92(1 \text{ person}) \times 28 = \$2,576$

The Haygood's child(4-12)= \$23.82 Adult(13+)= \$47.64 =1,071.9

**Presley's country jubilee Adult (13+) = 51.01 child (12 -) =25.50 =
1,071.17**

**Aquarium at the boardwalk adult (12+) = \$35.99
child (11-)= 17.99 - \$19.99 = 879.72**

The runaway mountain coaster 21.07 = 589.96

Total= 6,188.75

This Photo by Unknown
Author is licensed
under CC BY-SA



Airplane tickets ~

America airlines, 1:35pm -> 8:17pm, \$608 1 stop round trip, main

America airlines, 5:00am -> 11:30am, \$608 1 stop round trip, main

America airlines, 9:43am -> 4:40pm, \$733 1 stop round trip, main

All from PHX to SGF

total: 610-740 (1 person)

total: 17,080-20,720 (28 people)



For girls ad boys
 Lakeveiw Lodge for 24-
 Family/Friendly + hot tub,
 Home in Branson, Missouri,
 Can house 16 + guests,
 8 bedrooms- 16 beds,
 7.5 baths

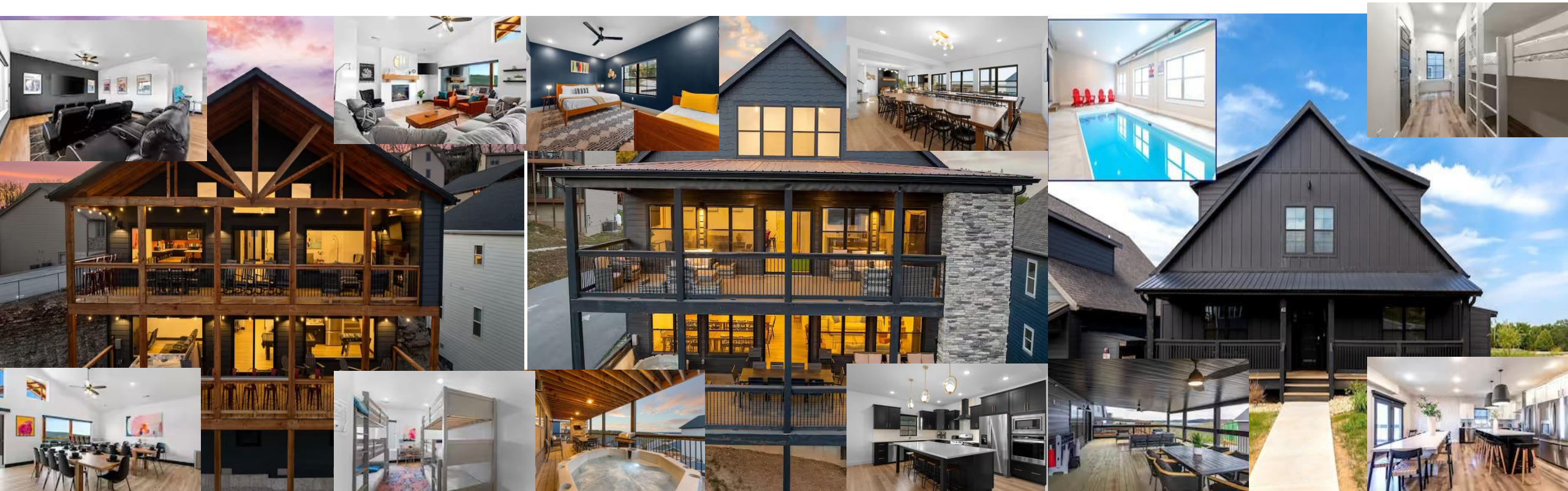
\$380 a night =\$3,553

For girls and boys
 House of FUN! Games, Lakeview,
 bunkroom!
 Branson, Missouri
 16+ guests,
 7 bedrooms-25 beds,
 7 bath

451 a night = \$4,119

For girl and boys
 New 10 Bedroom Suites w/ Private
 Heated indoor pool,
 Hollister, Missouri
 16+ guests,
 10 bedrooms – 23 beds,
 10 baths

355 night = \$3,409



Rental cars

Chrysler Pacifica
People 7
Bags 5
\$583 + 7 days
SGF

total:1,168

X

Educational

- **Titanic \$42.46**
- **Butterfly zoo (13+) \$30.33**
- **Child (12-) 20.22**
- **Ripley's believe or not museum \$30.60**
- **Talking rock cavern adult(13+)\$28.95**
- **Child (12-) \$16 .95**
- **Total: 169.51**

Spiritual

- church in Springfield
- temple
- Wilderness chapel
- The shrine of the holy spirit



The background of the image is a close-up, slightly angled view of several stacks of US dollar bills. The bills are primarily \$100 bills, with some \$10 bills visible. The bills are fanned out, showing their serial numbers and the portrait of Benjamin Franklin. The lighting is warm, giving the paper a yellowish tint. The text is overlaid on this background.

TOTAL:
32,445.51

**(I did the most
expansive ones)**

