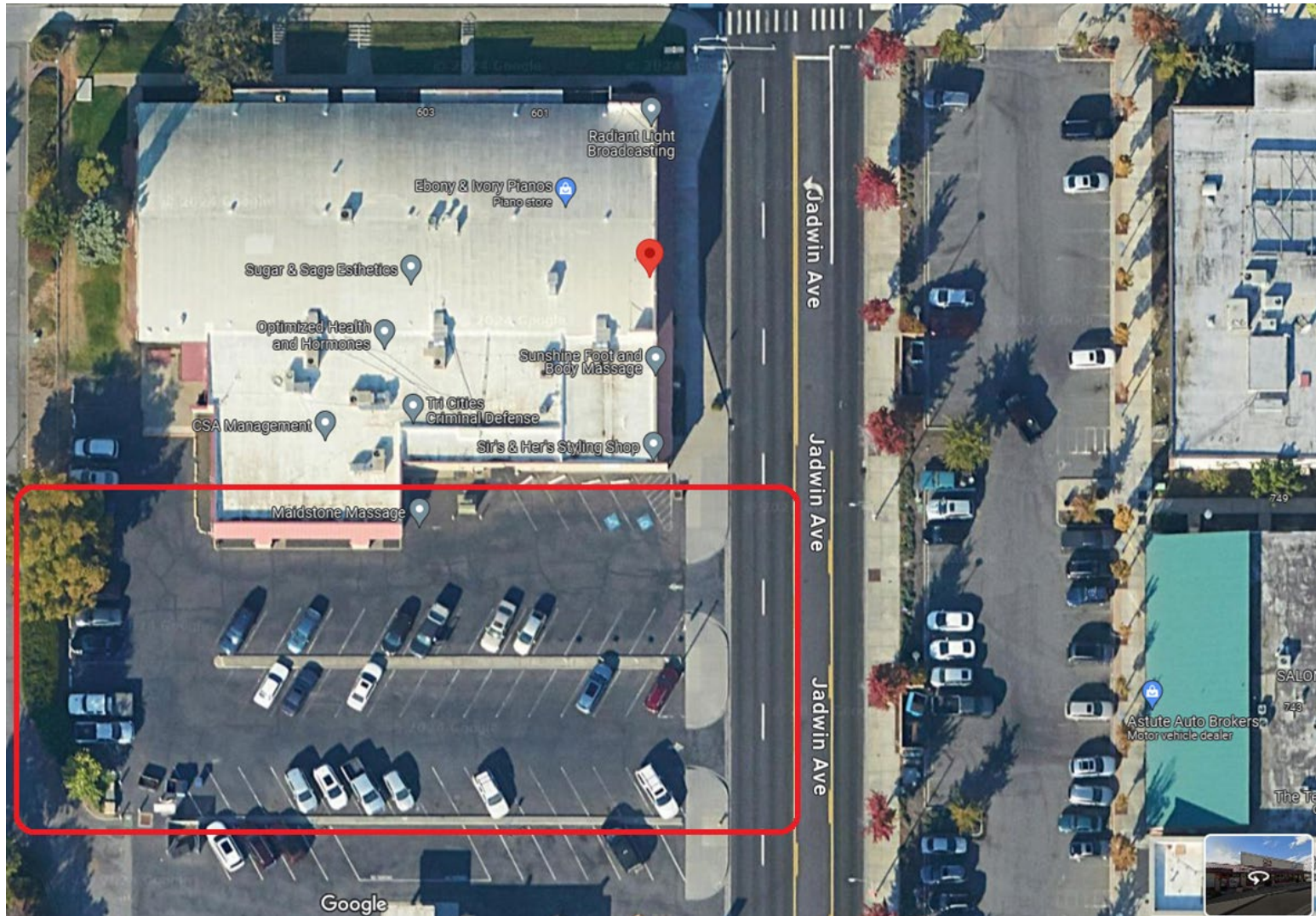
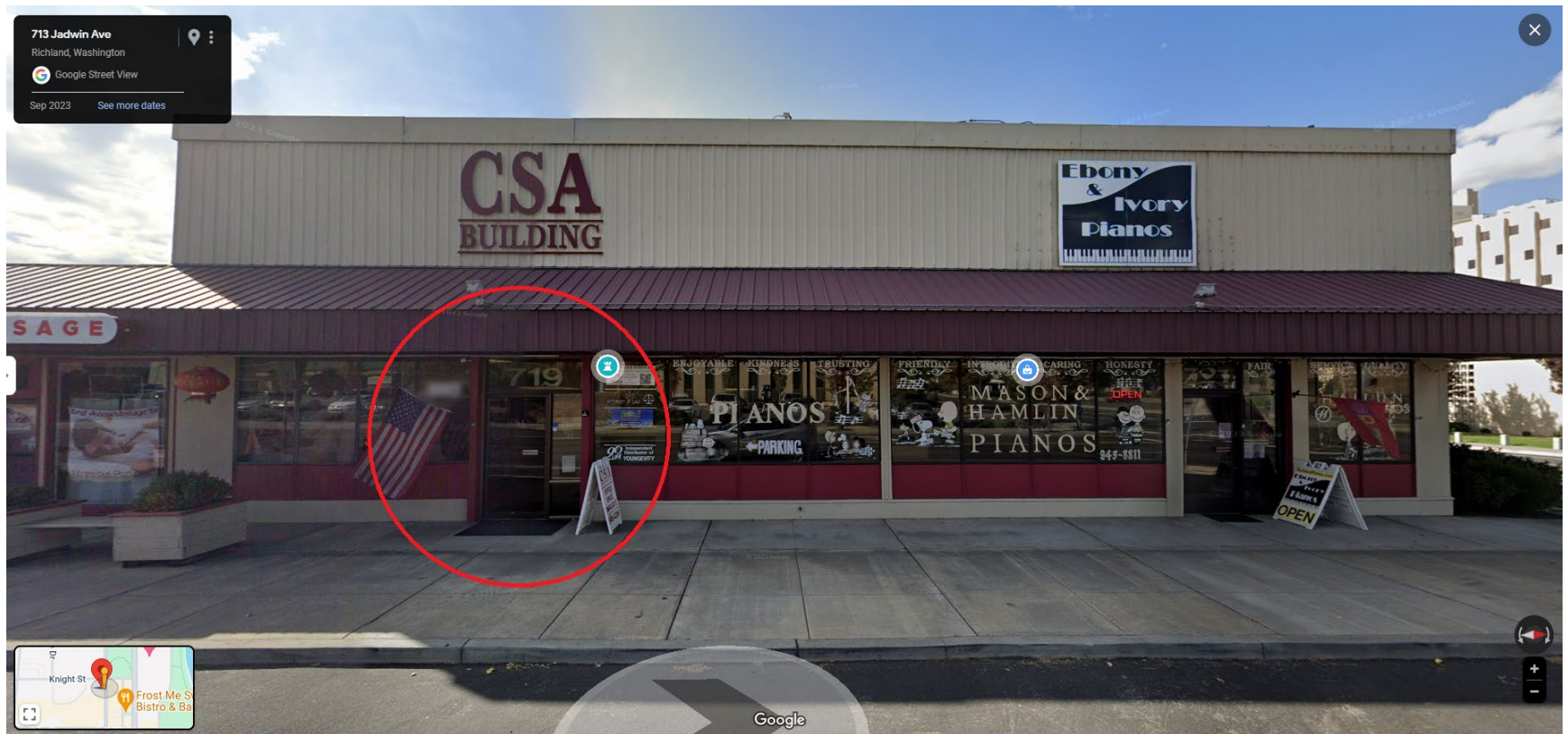


**KLINGENSMITH COUNSELING AND PSYCHOLOGICAL SERVICES
719 JADWIN AVE, OFFICE 719-11
RICHLAND, WA 99352**

There is free parking for clients and customers off JADWIN AVE:



If you are arriving for an appointment between 8 AM and 5 PM, please enter through the front of the building:



If you are arriving for an appointment after 5 PM, you will need to be let in the back entrance, as the building will be locked for the day. Please call me, and I will meet you at the back security door (circled on the map). There will be a picnic table near the door:

