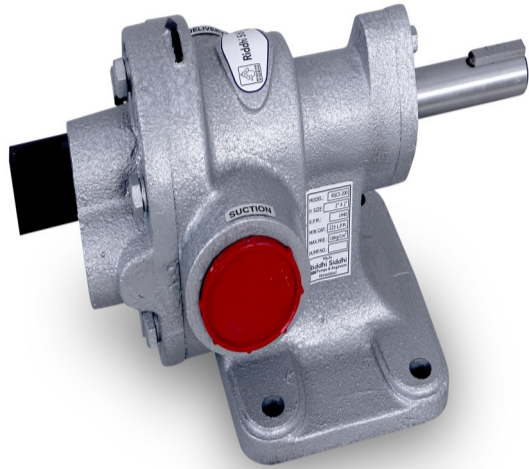




Rotary Gear Pump



Our Riddhi siddhi brand model RSCI-series rotary gear pump are self priming foot mounting type positive displacement rotary gear pump. It has simple three piece Cast Iron construction which is single helical modified profile carbon steel gear shrink fitted on alloy steel hardened and grind finished shaft as gear firmly supported 2 nos. of self lubricated sintered bronze bush bearing which ensure smooth running. These pumps can be run in either direction with change in inlet-outlet port position. Relief valve operations can be reversed by simply changing the R.V. parts on opposite side.

Material of Construction :

PUMP PARTS	MATERIAL OF STANDARD [90°c]	MATERIAL OF H.T. [200°c]	Qty. P.P.
Body	IS 210 FG 220 C.I. Grade	IS 210 FG 220 C.I. Grade	1.Nos
Back Cover	IS 210 FG 220 C.I. Grade	IS 210 FG 220 C.I. Grade	1.Nos
Gland Cover	IS 210 FG 220 C.I. Grade	IS 210 FG 220 C.I. Grade	1.Nos
R.H. & L.H. Gear	EN – 8.	EN – 24 { H. Nitrated}	2.Nos
Rotor/Stator Shaft	EN – 19.	EN – 19.	2.Nos
Bearing {Bushes}	PTFE Coated DU Bush.	PTFE Coated DU Bush.	4.Nos
Mechanical Seal	Pioneer Oil Seal	Carbon + Silicon Material.	1.Nos
R.V. Cap	Aluminum.	Aluminum.	1.Nos
Key of Coupling	EN – 8.	EN – 8.	1.Nos
Pressure Stopper	EN – 9.	EN – 9.	1.Nos
Pressure Piston	EN – 9.	EN – 9.	1.Nos
Pressure Spring	EN – 31.	EN – 31.	1.Nos
Pressure maintain screw	EN – 31.	EN – 31.	1.Nos
Without Lick Oaring	Temperature UP To 90°	Temperature UP To 200°	1.Nos
Hardware Hex Bolt	High Temperature EN - 19	High Temperature EN - 19	8.Nos
Solid Set of Pin	EN – 8620.	EN – 8620.	2.Nos.

Riddhi Siddhi Pumps & Engineers

Features :

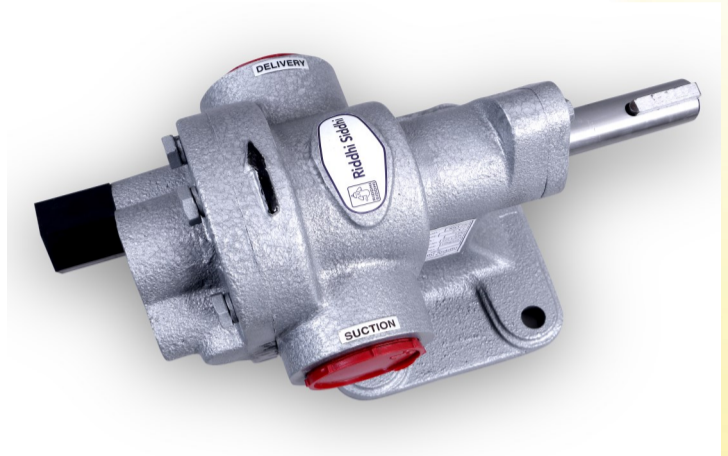
- ⇒ Bi-direction positive displacement pump
- ⇒ Single helical gear design
- ⇒ Relief valve design
- ⇒ Self-priming pump
- ⇒ High efficiency
- ⇒ Low noise
- ⇒ Wide capacity range

Applications :

- ◇ Refineries
- ◇ Dyes & Resins
- ◇ Bitumen
- ◇ Power Plant
- ◇ Cement Plant
- ◇ Printing Ink
- ◇ Glycerin Glycol
- ◇ Fuel Oil, Fish oil, Furnace Oil
- ◇ Steel Plant
- ◇ Oil Storage Installation

Range Description:

- BSP inlet/outlet size: - 1/2" to 3"
- Pump capacity in BSP: - Up to 1440 RPM
- Pressure: - Up to 10 Kg/CM²
- Max Temperature : - Up to 200 °c



Technical Specifications :

Pump Model	Suction & Delivery	Capacity AT 1440 RPM			RECOMMENDED MOTOR BHP AT DIFFERENTIAL PRESSURE (Kg/ cm ²) WITH 1500 SSU VISCOSITY										
		LPM	US GPM	M ³ /hr	Kg/ cm ²	1	2	3	4	5	6	7	8	9	10
RSCI-50	1/2" X 1/2"	20	5.3	1.2	KW	0.30	0.35	0.40	0.45	0.50	0.55	0.60	0.65	0.70	0.75
					HP	0.5			0.75			1.0			
RSCI-75	3/4" X 3/4"	30	7.92	1.8	KW	0.37	0.45	0.54	0.62	0.69	0.77	0.85	0.92	1.01	1.09
					HP	0.75			1.0			1.5			
RSCI-100	1" X 1"	50	13.2	3.0	KW	0.40	0.50	0.60	0.75	0.89	1.04	1.17	1.30	1.46	1.59
					HP	1.0			1.5			2.0			
RSCI-125	1 1/4" X 1 1/4"	75	19.8	4.5	KW	0.7	1.0	1.2	1.4	1.5	1.9	1.95	2.15	2.35	2.55
					HP	1.5			2.0			3.0			
RSCI-150	1 1/2" X 1 1/2"	110	29.0	6.6	KW	1.05	1.45	1.95	2.10	2.40	2.65	2.95	3.25	3.60	3.75
					HP	2.0			3.0			5.0			
RSCI-200	2" X 2"	225	59.4	13.5	KW	2.0	2.5	3.2	3.75	4.3	4.55	5.6	6.2	6.9	7.11
					HP	3.0			5.0			7.5			
RSCI-250	2 1/2" X 2 1/2"	350	92.5	21.0	KW	4.15	5.2	6.1	7.3	8.2	9.1	10.3	11.2	12.1	12.25
					HP	5.0			10.0			12.5			
RSCI-300	3" X 3"	500	131.6	30.0	KW	4.5	6.6	8.4	9.9	11.1	12.1	13.0	13.9	14.9	15.9
					HP	10			15			20			

- All dimensions are in millimeters. Unless otherwise stated Specifications are subject to change without prior notice as improvement are made from time to time.

Note: - We also provide complete set of pump fitted with motor and mounting frame. Pump accessories are provided on demand.

Manufacturer Details : Riddhi Siddhi Pumps & Engineers

Address: - F-10, Shakriba Estate, B/H Indo German tools, Phase 4, Vatva GIDC, Ahmedbad-382445 , Gujarat, India

Contact Number: - +27 - 0612078064, +91 - 9638363658, +91 -

Email Address : - riddhisiddhipump@gmail.com

Website: - <https://riddhisiddhipump.com>

QR Code: -

