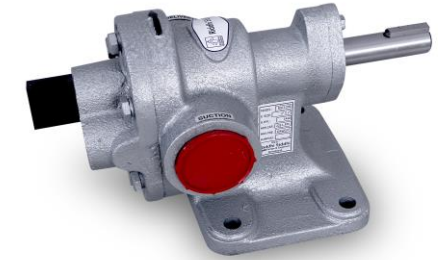




Cast Iron Rotary Gear Pump



Technical Specification Table:-

Pump Model	Suction & Delivery	Capacity AT 1440 RPM			RECOMMENDED MOTOR BHP AT DIFFERENTIAL PRESSURE (Kg/ cm ²) WITH 1500 SSU VISCOSITY										
		LPM	US GPM	M3 /hr	Kg/cm ²	1	2	3	4	5	6	7	8	9	10
RSCI-50	1/2" X 1/2"	20	5.3	1.2		10	20	30	40	50	60	70	80	90	100
					KW	0.30	0.35	0.40	0.45	0.50	0.55	0.60	0.65	0.70	0.75
RSCI-75	3/4" X 3/4"	30	7.92	1.8	HP	0.5			0.75			1.0			
					KW	0.37	0.45	0.54	0.62	0.69	0.77	0.85	0.92	1.01	1.09
RSCI-100	1" X 1"	50	13.2	3.0	HP	0.75			1.0			1.5			
					KW	0.40	0.50	0.60	0.75	0.89	1.04	1.17	1.30	1.46	1.59
RSCI-125	1 1/4" X 1 1/4"	75	19.8	4.5	HP	1.0			1.5			2.0			
					KW	0.7	1.0	1.2	1.4	1.5	1.9	1.95	2.15	2.35	2.55
RSCI-150	1 1/2" X 1 1/2"	110	29.0	6.6	HP	1.5			2.0			3.0			
					KW	1.05	1.45	1.95	2.10	2.40	2.65	2.95	3.25	3.60	3.75
RSCI-200	2" X 2"	225	59.4	13.5	HP	2.0			3.0			5.0			
					KW	2.0	2.5	3.2	3.75	4.3	4.55	5.6	6.2	6.9	7.11
RSCI-250	2 1/2" X 2 1/2"	350	92.5	21.0	HP	3.0			5.0			7.5			
					KW	4.15	5.2	6.1	7.3	8.2	9.1	10.3	11.2	12.1	12.25
RSCI-300	3" X 3"	500	131.6	30.0	HP	5.0			10.0			12.5			
					KW	4.5	6.6	8.4	9.9	11.1	12.1	13.0	13.9	14.9	15.9
					HP	10			15			20			

NOTE: All dimensions are in millimeters. Unless otherwise stated Specifications are subject to change without prior notice as improvement are made from time to time.

Conversion: 1 Imperial Gallon = 4.5 Liters / 1 U.S. Gallon = 3.78 Liters / 1 P.S.I. = 2.31 Feet. / 1 Kg/cm² = 14.2 P.S.I.