



Family Child Care  
**A Little Village DayCare**

Phone Number: 818-279-1184

Hours of Operation:

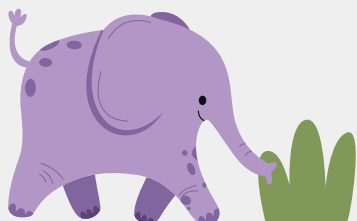
**MON-FRI**

**6.30 am to 5:59 pm**



## **Full Time**

<b><u>Age Group</u></b>	<b><u>Monthly</u></b>
Infant(11-24 months)	1,350.00
Toddlers (2 to 5 yrs.)	1,250.00
K - 12 years old	1,150.00





Family Child Care  
**A Little Village DayCare**

Phone Number: 818-279-1184

Hours of Operation:

**MON-FRI**

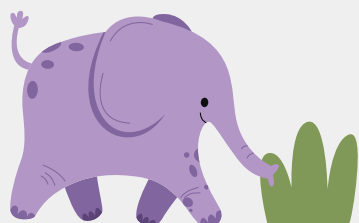
**6.30 am to 5:59 pm**



## **Part Time 3 Days**

<b><u>Age Group</u></b>	<b><u>Monthly.</u></b>
Infant(11-24 months)	1,100.00
Toddlers (2 to 5 yrs.)	1,000.00
K - 12 years old	900.00

\*Part-Time requires fixed day schedule.



**A Little Village  
DayCare Inc**



Family Child Care  
**A Little Village DayCare**

Phone Number: 818-279-1184

Hours of Operation:

**MON-FRI**

**6 am to 5:59 pm**

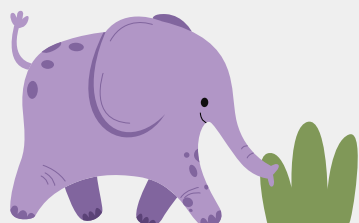


## **Flex Care Rates Everyday**

<b><u>Age Group</u></b>	<b><u>Half Day</u></b> 6am - 12pm / 12pm-5.59pm	<b><u>Full Day</u></b> 6am - 5.59pm
<b>Infant(11-24 months)</b>	70.00	135.00
<b>Toddlers (2 to 5 yrs.)</b>	65.00	125.00
<b>K - 12 years old</b>	60.00	115.00

\*FlexCare requires subscription amount of \$150 billed monthly with auto pay.

\*Prior day notice required no later than 9:00 PM for next day drop off.



**A Little Village  
DayCare Inc**