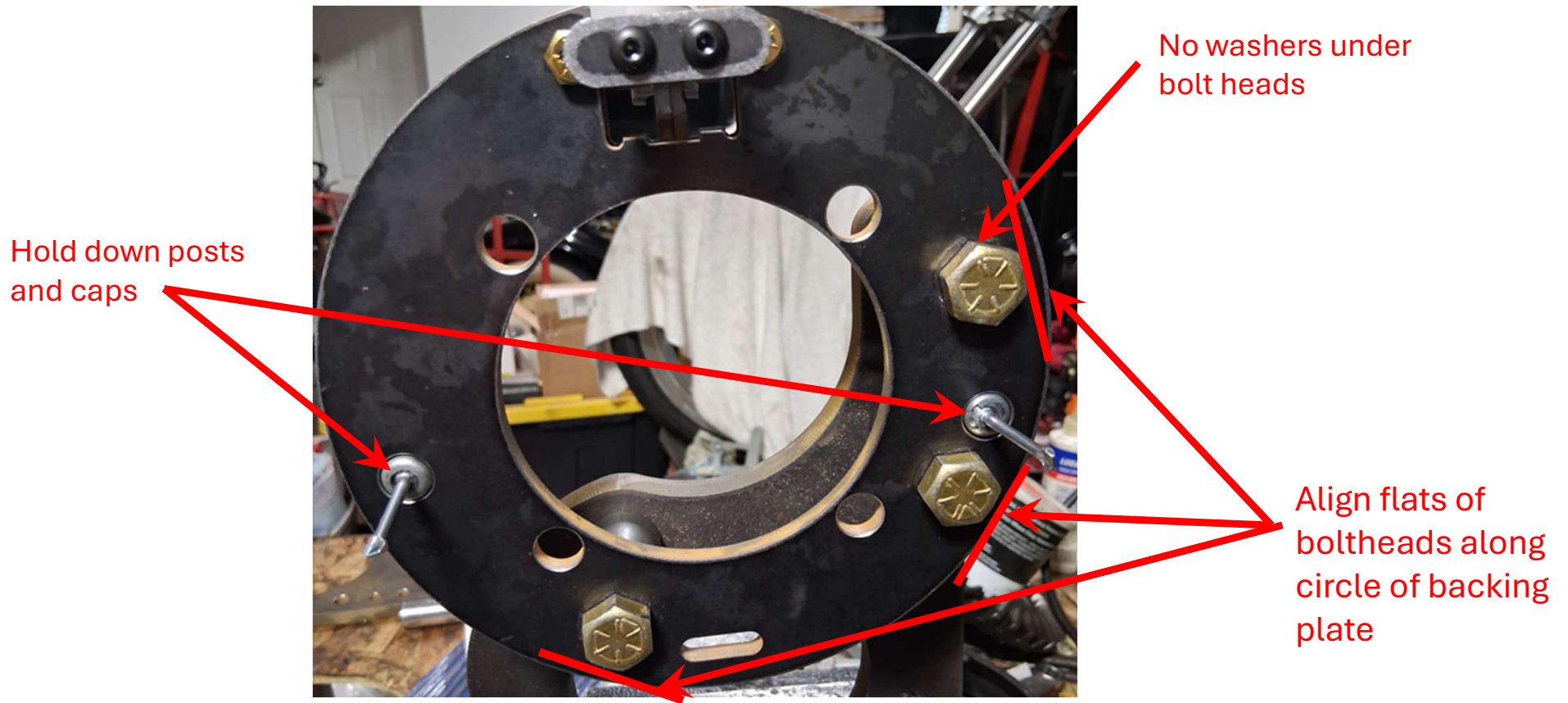


Supplemental Rear Brake Assembly Steps

Rear Brake Assembly Steps



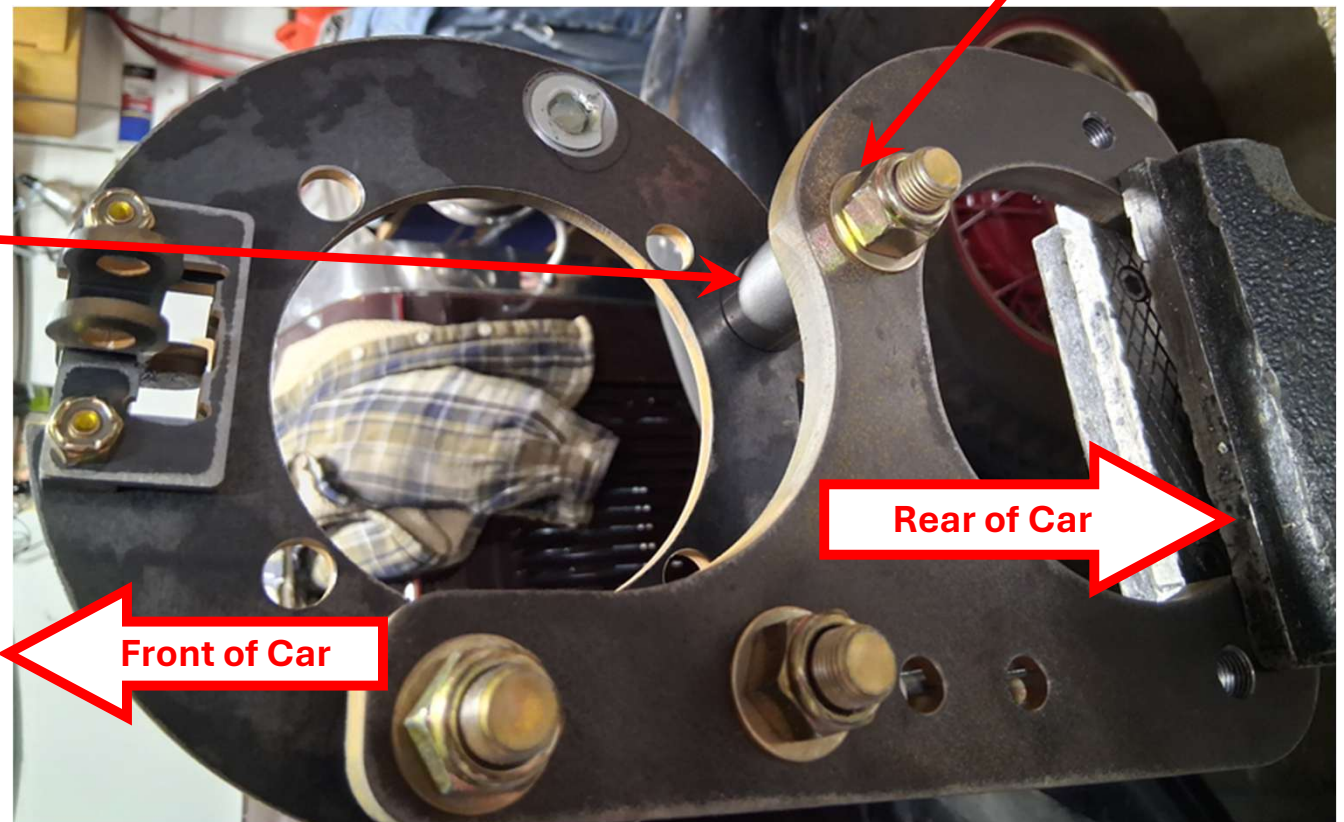
Rear Brake Assembly Steps

Bracket Orientation (passenger side)

Hold down post cap notched for this bracket spacer

Bracket Spacers

Washers under nuts only



Rear Brake Assembly Steps



Tab on outer side of both brake shoes is ground to make the hold down spring easier to install

Tab on inner side of upper brake shoe is ground to clear mounting bolt head (this would be the passenger side)



Rear Brake Assembly Steps

Upper spring is VERY stiff, so here is a trick



- Attach one brake shoe to Backing Plate.
- Hook the upper spring to the brake shoes and set the loose brake shoe against the anchor.



- Hold the second brake shoe against the backing plate
- Install the second brake shoe hold down spring



- Second brake shoe is held in place so the remaining hardware may be installed

Rear Brake Assembly Steps

Parking Brake Assembly

Bolt that requires inner brake shoe tab to be ground (this would be the driver's side assembly)

