

“I wish I could do that stigmata thing like Agnes does for Jane Fonda, in the movie *Agnes of God*. I think that would really impress my therapist, and maybe make her like me. Maybe even make her proud to have me as a patient. She could tell all her therapist friends, ‘I have a patient who is so psychotic, she can make the palms of her hands bleed all by themselves, and she’s not even Catholic.’”

-Lori Sprecher
Anxiety Attack

Personality Disorders: Clinical Presentation DSM-IV

	Type	Pattern
A	Paranoid	Distrust. Suspicion.
A	Schizoid	Detachment. Restricted emotion.
A	Schizotypal	Acute social discomfort. Cognitive and perceptual distortions.
B	Antisocial	Disregard and violation of others.
B	Borderline	Unstable relationships, self image, affect. Impulsivity.
B	Histrionic	Excessive emotionality and attention seeking.
B	Narcissistic	Grandiosity, need for admiration, lack of empathy.
C	Avoidant	Social inhibition, feelings of inadequacy, hypersensitivity to negative evaluation.
C	Dependent	Submissive, clinging; need to be taken care of.
C	Obsessive-compulsive	Preoccupation with order, perfection, and control.

Narcissistic Personality Disorder: Clinical Presentation DSM-IV

- Sense of entitlement; rules are for others
- Grandiose sense of self importance
- Fantasies of unlimited success/power/brilliance
- Not understood by [mere] others
- Needs excessive admiration
- Interpersonally exploitive
- Lacks empathy
- Envy, or believes self to be object of envy
- Arrogant, haughty behaviors or attitudes



Pick your favorite Narcissist



Remember:
It's only pathology
when it causes a
problem.

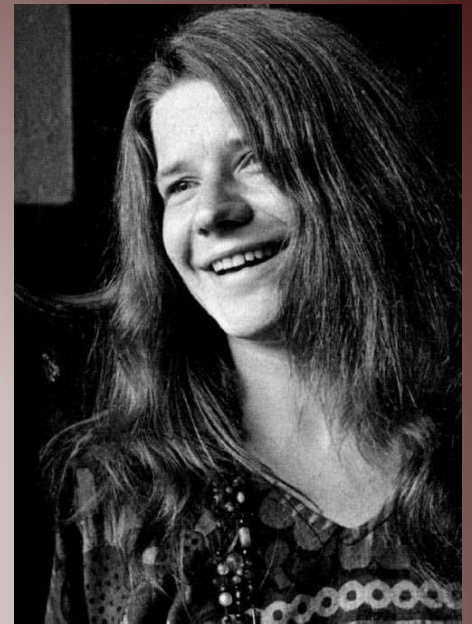
Borderline Personality Disorder: Clinical Presentation DSM-IV

- Fear of abandonment
- Unstable self image
- Instability of mood
- Inappropriate anger
- Unstable, intense relationships
- Chronic feelings of emptiness
- Impulsivity, e.g., money, sex, substance
- Recurrent self injurious behavior
- Transient paranoid ideation or dissociation



Remember:
It's only pathology
when it causes a
problem.

Pick your favorite Borderline



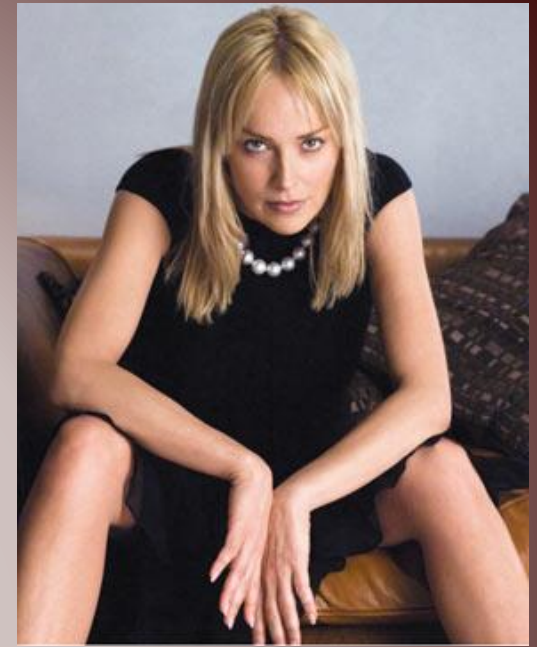
Histrionic Personality Disorder: Clinical Presentation DSM-IV

- Uncomfortable when not the center of attention
- Interactions seductive or provocative
- Rapidly shifting and shallow emotion
- Uses physical appearance to draw attention
- Frequently considers relationships more intimate than they really are.
- Highly stylized speech
- Sense of high drama
- Easily suggestible



Remember:
It's only pathology
when it causes a
problem.

Pick your Favorite Histrionic



Experiential Clues to Personality Disorders (1)

- The person who has a lot of problems, but to whom you are immediately drawn.
- You are exhausted after interaction.
- “You are the only one who can help me.”
- Demands increasing amounts of time & attention.
- The person whose anxiety, cynicism, or anger seems to be contagious.



Experiential Clues to Personality Disorders (2)

- Frequently coupled with report of childhood trauma, combat trauma, domestic abuse, or similarly textured history.
- Frequently includes mood swings, self-injurious behavior, suicidal thoughts or actions, sleep disorders, panic attacks, eating disorders, psychotic-like symptoms, compulsions and rituals, repetitive headaches, self-persecution, rage driven violence...

Dynamic Clues to Personality Disorders

- They flee when no one pursues.
- Staff/congregation splitting
- “I hate you; don’t leave me.”
- “I love you; go away.”
- “Why are you ignoring me?”
- They require others to “make bricks without straw.”
- It’s never good enough. No amount of trying or helping has any lasting effect.

