



COMMON DENTAL COMPLAINTS AND HOMOEOPATHY

Dr. Rajneesh Kumar Sharma MD (Homoeopathy)

Dr. Swati Vishnoi BHMS

COMMON DENTAL COMPLAINTS AND HOMOEOPATHY

© Dr. Rajneesh Kumar Sharma M.D. (Homoeopathy)
Dr. Swati Vishnoi B.H.M.S.
Homoeo Cure & Research Institute
NH 74, Moradabad Road, Kashipur (Uttaranchal)
INDIA Pin- 244713 Ph. 05947- 260327, 9897618594
E. mail- drrajneeshhom@hotmail.com
www.treatmenthomoeopathy.com
www.homeopathicreatment.org.in
www.homeopathyworldcommunity.com



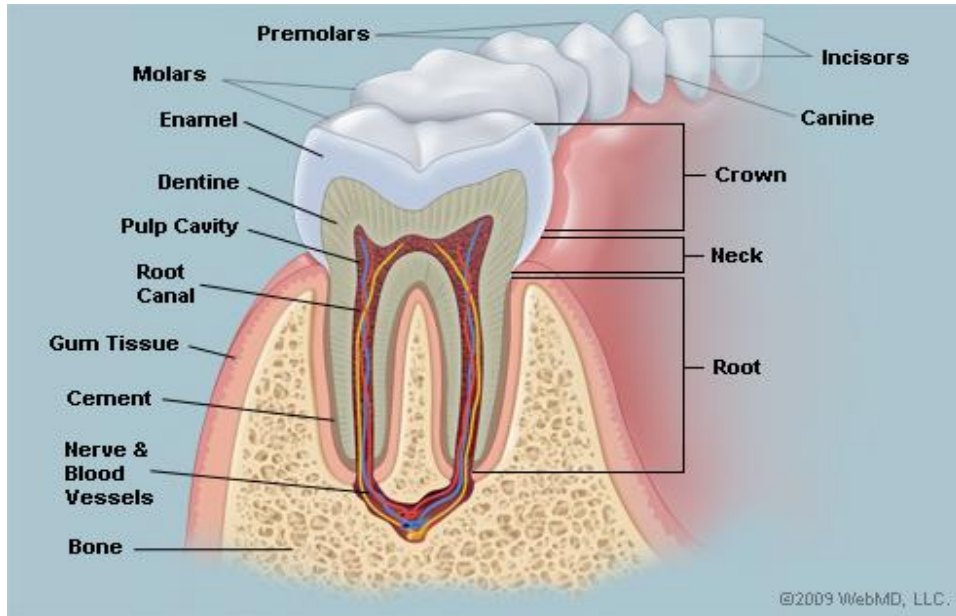
CONTENTS

Introduction	1
Pain- upon chewing	2
Tooth decay	3
Pain- with hot or cold	4
Pain- spontaneous, throbbing and radiating	5
Pain- with Swelling in gums or face	6
Bleeding Gums	6
Halitosis- Bad Breath	8
Ulcers	10
gum- abscess	11
Chipped Tooth	12
Trauma- mouth / teeth	12
Gingivitis	13
Periodontitis	14
Bibliography	15

INTRODUCTION

A tooth (plural teeth) is a small, calcified, whitish structure found in the jaws of many vertebrates and used to break down food. Teeth are also responsible for facial beauty and magnetizing smile. Bright and beautiful teeth are an attractive asset. They provide selfconfidence, improve quality of life and allow to feel more natural.

Their slightest affection may cause a measurable disturbance in healthy life.



Teeth

Teeth	Age Tooth Comes In (years)
Central Incisor	7.35
Lateral Incisor	8.45
Canine (Cuspid)	11.35
First Premolar (Bicuspid)	10.20
Second Premolar (Bicuspid)	11.05
First Molar	6.30
Second Molar	12.25
Third Molar	Variable 17 to 21
Third Molar	
Second Molar	11.90
First Molar	6.05
Second Premolar (Bicuspid)	11.20
First Premolar (Bicuspid)	10.50
Canine (Cuspid)	10.35
Lateral Incisor	7.50
Central Incisor	6.40

PAIN- UPON CHEWING

In the patients, having large tooth filling, it is possible that over time, cracks have occurred in the tooth (Causa occasionalis). Every time he bites down and releases, the tooth flexes. This tooth flexion causes fluid in it to move and cause pain. For a recent filling, this sensation is normal for up to six weeks.

TEETH - FILLING teeth agg.; after mag-p.

TEETH - PAIN - chewing - after chewing agg. nat-m. sabin. staph.

TEETH - PAIN - chewing - agg. alum-p. Alum. Am-c. anan. ant-c. arg-met. arg-n. Arn. ars. aur-ar. aur. bamb-a. bell. Bry. Calc-p. calc. carb-an. Carb-v. Carbn-s. Caust. CHAM. chel. Chin. chinin-m. Cocc. Coff. con. crot-t. dulc. Euph. ferr-ma. Graph. hura Hyos. Ign. kali-ar. Kali-c. kali-p. Lach. Lyc. mag-c. Mag-m. med. Merc. NAT-M. NIT-AC. Nux-m. Nux-v. olnd. ozone Ph-ac. Phos. Puls. rhus-t. sabin. Sang. Sil. spig. spong. Staph. Sul-ac. sulph. syph. Thuj. tritic-vg. vanil. verat. zinc-p. zinc.

TEETH - PAIN - chewing - agg. - food, not from empty chewing; only when cocc.

TEETH - PAIN - chewing - agg. - only when calc. lyc. olnd. sabin.

TEETH - PAIN - chewing - agg. - pricking pain am-c.

TEETH - PAIN - chewing - agg. - sore ars. Aur. calc-sil.

TEETH - PAIN - chewing - amel. bry. rhod. seneg.

TOOTH DECAY

This occurs when plaque is combined with starches from your food. Such mixture results to the production of acids which attack the enamel or the protective covering of your pearly whites (Psora). When this condition is disregarded and ignored, it might become more severe and life-threatening.



TEETH - CARIES, decayed, hollow abrot. acon. aloe alum. alumn. Am-c. Ambr. anac. anan. ang. ANT-C. arg-n. ars. asar. aur-ar. aur-s. aur. bac. Bar-c. BELL. benz-ac. BORX. Bov. bry. calc-f. Calc-p. Calc-s. calc-sil. Calc. carb-an. Carb-v. carbn-s. carc. caust. Cham. Chin. clem. coca cocc. coff. con. euph. FL-AC. Glon. graph. guaj. Hecla Hep. Hyos. ip. Kali-bi. Kali-c. Kali-i. kali-n. kali-p. Kreos. Lach. Lyc. Mag-c. mag-m. mang. med. meph. MERC. MEZ. NAT-C. nat-m. nat-p. nat-s. nat-sil. Nit-ac. Nux-v. ox-ac. par. petr. Ph-ac. Phos. pip-n. plan. plat. PLB. Puls. rheum Rhod. Rhus-t. ruta sabad. sabin. sang. sel. SEP. Sil. spig. STAPH. sul-ac. Sulph. syph. tab. Tarax. thuj. tub. verat. zinc.

TEETH - CARIES, decayed, hollow - appear, as soon as they Kreos. staph.

TEETH - CARIES, decayed, hollow - children; premature in bac. Calc-f. Calc-p. Calc. carc. cocc. coff. Fl-ac. hecla KREOS. merc. Mez. phos. Plan. sil. STAPH. tub.

TEETH - CARIES, decayed, hollow - children; premature in - syphilitic merc.

TEETH - CARIES, decayed, hollow - diabetes mellitus sul-ac.

TEETH - CARIES, decayed, hollow – painful glycyrr-g. kreos. staph.
 TEETH - CARIES, decayed, hollow – rapid ars. bar-c. Calc-p. Calc. Carb-v. FL-AC. Kreos. med.
 mez. phos. plan. SEP. staph. syph.
 TEETH - CARIES, decayed, hollow - sensation of agath-a. asar.
 TEETH - CARIES, decayed, hollow – Crown merc. Staph.
 TEETH - CARIES, decayed, hollow - Gums, at edge of calc. gink-b. nat-sil. sil. syph. Thuj.
 TEETH - CARIES, decayed, hollow – Internal sel.
 TEETH - CARIES, decayed, hollow - Molars - Upper – left carb-an.
 TEETH - CARIES, decayed, hollow - Roots, at agath-a. alum. am-c. fl-ac. merc. mez. sil. sulph.
 syph. THUJ.
 TEETH - CARIES, decayed, hollow - Sides of teeth mez. staph. thuj.
 TEETH - CARIES, decayed, hollow - Sides of teeth - Outer side bac.

PAIN- WITH HOT OR COLD

Tooth-decay or cavities cause an interruption in the protective enamel which exposes the underlying dentin, which is nerve rich and highly sensitive to outside stimuli (Psora/ Syphilis).

A newly placed resin filling can also cause some temperature sensitivity for a few weeks following placement (Causa occasionalis). If a tooth is more sensitive to hot, it can be related to a deeper nerve pain (Psora).

TEETH - PAIN - heat - stove; of - agg. graph.
 TEETH - PAIN - heat - stove; of - amel. ARS.
 TEETH - PAIN - heated; when phos. zinc.
 TEETH - PAIN - warmth - external - agg. all-c. Ambr. arn. Bry. carb-v. carbn-s. cham. chel. COFF.
 Cor-r. dulc. Ferr-p. Ferr. graph. hell. helon. hep. lach. mag-c. mag-s. nux-m. ph-ac. Phos. PULS.
 sabin. Sulph. syph.
 TEETH - PAIN - cold - agg. - drawing pain chin. coc-c. Nux-v. SEP.
 TEETH - PAIN - cold - air - agg. Acon. Agar. all-c. alum-sil. Alum. Anan. androc. ant-c. bac. Bell.
 borx. bry. bufo calc-sil. CALC. camph. carbn-s. CAUST. CHAM. chin. cina dulc. fl-ac. Hep. hyos.
 Mag-c. Mag-p. MERC. nat-m. Nux-m. Nux-v. Phos. plan. plat. Puls. Rhod. Rhus-t. sabad. Sars.
 sel. seneg. Sep. Sil. Spig. Staph. streptoc. Sul-ac. SULPH. Ther. thuj. trom. tub.
 TEETH - PAIN - cold - air - agg. - tearing pain bufo carbn-s.
 TEETH - PAIN - cold - air - amel. bry. chel. Clem. kali-s. mag-m. mez. Nat-s. Nux-v. PULS. sars.
 Sel. thuj.
 TEETH - PAIN - cold - air - drawing in cold air - agg. - gnawing pain Rhus-t.
 TEETH - PAIN - cold - air - drawing in cold air - agg. - stitching, stinging camph.
 TEETH - PAIN - cold - air - drawing in cold air - amel. - gnawing pain Nux-v.
 TEETH - PAIN - cold - anything cold in mouth; from - agg. agar. anan. androc. ant-c. arg-n. Ars.
 Bar-c. bar-s. bov. calc-p. calc-sil. Calc. Carb-v. carbn-s. castm. coc-c. Colch. Con. dulc. grat. ham.
 hell. hyos. irid-met. KALI-C. kali-i. kali-n. kali-p. kola Lyc. Mag-c. mag-m. Mag-p. mag-s. mang-
 act. mang. Merc. NAT-M. Nit-ac. nux-m. Nux-v. par. ph-ac. Phos. pieri-b. Plan. plb. psor. puls.
 RHUS-T. rob. ruta SEP. sil. Spig. spong. Staph. Sul-ac. sulph. syph. ther. thuj. tritic-vg.
 TEETH - PAIN - cold - anything cold in mouth; from - agg. - stitching, stinging Nit-ac. Sulph.
 TEETH - PAIN - cold - anything cold in mouth; from - agg. - warm agg.; or carb-v. carl. dulc. lach.

TEETH -PAIN -cold -anything cold in mouth; from-amel. **Ambr.** bell. bism. bry. calc. caust. cham. chin. **Coff.** **Ferr-p.** **Glon.** mag-c. mag-m. merc. nat-s. nux-v. phos. **Puls.** sacch-a. sep. staph. sulph.

TEETH - PAIN - cold - applications - agg. - drawing pain borx.

TEETH - PAIN - cold - bathing - agg. **ant-c.**

TEETH - PAIN - cold - drinks - agg. agar. anan. androc. **ANT-C.** arg-n. **Ars.** bar-c. bar-s. borx. bry. **Calc.** carb-an. **Carb-v.** carbn-s. castm. caust. cench. **Cham.** chinin-ar. cina coc-c. **Fl-ac.** germ-met. graph. gymno. **HEP.** kali-ar. **KALI-C.** kali-p. **LACH.** mag-p. **Mang.** **Merc.** **Mur-ac.** **NAT-M.** **Nux-m.** **Nux-v.** **Phos.** **Plan.** puls. rhod. **RHUS-T.** rumx. sabad. sang. **Sars.** sel. sil. spig. **STAPH.** **Sulph.** **Ther.** thiam. thuj. til.

TEETH - PAIN - cold - drinks - agg. - pinching pain carb-an.

TEETH - PAIN - cold - drinks - agg. – sore **Ars.** bry.

TEETH - PAIN - cold - drinks - amel. **Bism.** **Bry.** cham. chim. **Coff.** ferr-p. ferr. nat-s. **Puls.**

TEETH - PAIN - cold - finger - amel. - drawing pain ang.

TEETH - PAIN - cold - food - agg. agar. androc. bov. bry. **Calc.** carb-v. **Con.** dulc. **Glon.** hell. lach. mag-p. merc. nux-v. par. plb. rhus-t. rob. sabad. staph. sulph. tritic-vg. vanil.

TEETH - PAIN - cold - food - agg. - tearing pain carb-v.

TEETH - PAIN - cold - food and drinks - amel. - boring pain mag-m.

TEETH - PAIN - cold - washing - after - agg. calc. cham. graph. kali-c. merc. nux-m. nux-v. puls. sep. **Spig.** staph. **SULPH.**

TEETH - PAIN - cold - hands - amel. ang. kali-p. rhus-t.

TEETH - PAIN - cold - washing - after - amel. **All-c.** asar. bell. bry. cham. clem. kali-c. laur. **Puls.**

TEETH - PAIN - cold - water - agg. - tearing pain agar. arg-n. borx. mag-c. **Nux-m.** phos. **Sars.** staph. sulph.

TEETH - PAIN - cold - water - amel. **Aesc.** **All-c.** **Ambr.** ap-g. bell. **Bism.** **BRY.** camph. **Caust.** **Cham.** chel. **Chim.** **Chin.** chinin-m. **Clem.** **COFF.** **Ferr-p.** **Ferr.** fl-ac. hydrog. kali-c. **Lac-c.** laur. **Mag-c.** mag-m. merc. **Nat-s.** nux-v. phos. **PULS.** rhus-t. sel. sep. sulph. thuj.

TEETH - PAIN - cold - water - amel. - held in the mouth cham. clem. coff.

TEETH - PAIN - cold - water - amel. - icy cold ferr.

TEETH - PAIN - cold - water - amel. - momentarily - screwing pain bry.

TEETH - PAIN - cold - water - amel. – neuralgic **coff.**

TEETH - PAIN - cold - water - amel. - pulled out; as if being chim.

TEETH - PAIN - cold; after taking a **Acon.** **Bar-c.** bell. camph. carb-v. **Caust.** **Cham.** chin. colch. dulc. **Gels.** glon. grat. **Hyos.** ign. kali-c. kali-p. **Merc.** mez. nat-c. nit-ac. nux-m. **Nux-v.** phos. **Puls.** rhus-t. staph. sul-ac. zinc.

TEETH - PAIN - cold; after taking a - spring agg. puls.

TEETH - PAIN - cold agg.; becoming – head kali-c.

TEETH - PAIN - cold agg.; becoming - overheating; after **Cham.** **Glon.** kali-c. **Rhus-t.**

TEETH - PAIN - cold air; sensation as from cedr. coc-c. par.

TEETH - PAIN - cold air; sensation as from - forced into teeth; were ambr. cocc-s.

TEETH - PAIN - cold air; sensation as from - rushed out of teeth nat-c.

TEETH - PAIN - cold air; sensation as from - rushed out of teeth - and in teeth kali-n.

TEETH - PAIN - coldness agg. - pressing pain kola

PAIN- SPONTANEOUS, THROBBING AND RADIATING

Pain that occurs spontaneously, throbs and can only be managed with pain medication is an indication of deeper involvement of the nerve of the tooth (Psora). Once decay reaches deep into

the tooth, the nerve becomes inflamed and can no longer be healed by removing decay and placing a filling (Syphilis). Teeth with this response will need to have root canal treatment or removal to eradicate the pain.

TEETH - PAIN - sudden - drawing pain carb-an. coc-c.

TEETH - PAIN - pulsating pain Acon. agar. agn. All-c. aloe alum. am-c. ang. apis arg-n. arn. Ars. aur. bar-c. bar-m. BELL. bit-ar. brom. Bry. Calc. cann-i. cann-s. carb-an. Carb-v. Carbn-s. CAUST. CHAM. CHIN. Chinin-ar. coc-c. cocc-s. Coff. colch. Coloc. daph. dulc. elae. Euph. euphr. eupi. form. Glon. hep. Hyos. hyper. kali-ar. Kali-c. kali-i. kali-n. kali-p. LACH. Lyc. m-ambo. m-arct. Mag-c. mag-m. mag-s. merc-c. Merc. mur-ac. nat-ar. nat-c. Nat-m. nat-p. Nat-s. nat-sil. Nit-ac. nux-m. par. phos. pip-n. plat. pot-e. psor. Puls. rat. Rhus-t. ribo. sabad. sabin. sacch-a. sel. SEP. Sil. Spig. Staph. stram. SULPH. tab. Tarent. thuj. tritic-vg. Verat. zinc-p. zinc.

TEETH - PAIN - pulsating pain - synchronous with pulse clem.

TEETH - PAIN – radiating ant-c. arn. ars. cham. coff. ferr. hyos. kali-bi. mang. Merc. mez. nux-v. plat. puls. rhus-t. spig. staph.

TEETH - PAIN - radiating - accompanied by - Glands; swelling of kali-bi.

PAIN- WITH SWELLING IN GUMS OR FACE

Nerve infection of a tooth can cause swelling in the gums and face (Psora/ Sycosis). Often there is no outlet and a collection of fluid occurs close to the site of infection (Psora/ Sycosis).

Swelling can occur from blocked salivary glands too (Sycosis/ Syphilis). Pain will occur right before eating when the saliva duct attempts to expel the saliva to digest the food in mouth. Common salivary ducts lie under the tongue, next to the second upper molars in the cheeks.

TEETH - PAIN - accompanied by - Cheeks – swelling am-c. arn. ars. aur. BELL. borx. BRY. Calc. caps. caust. cham. Hecla hep. LACH. Lyc. mag-c. MERC. nat-c. Nat-m. nit-ac. nux-v. petr. ph-ac. phos. Puls. sep. Sil. staph. sulph.

TEETH - PAIN - accompanied by - Face – swelling spig.

TEETH - PAIN - accompanied by - Submaxillary glands; swelling of clem.

TEETH - PAIN - swollen submaxillary gland, seems to originate in - cutting pain camph.

MOUTH - PAIN – Gums acon-ac. Agar. allox. alum-p. alum-sil. alum. ambr. apis arg-met. arg-n. Arn. Ars-i. ARS. arum-t. aur. bamb-a. bell-p. Bell. bism. borx. Bov. bry. but-ac. calc-i. Calc. canth. Carb-an. Carb-v. carc. carl. cassia-s. Caust. Cham. chel. cortico. crot-c. Crot-h. Dol. eupi. graph. Ham. Hep. hyos. iod. kali-br. kali-i. kali-n. kreos. Lach. luf-op. lyc. Lyss. m-ambo. m-arct. Mag-m. merc-c. MERC. mucs-nas. nat-m. nat-sil. nux-v. oncor-t. orot-ac. ph-ac. phos. plb. pod. PULS. ran-s. raph. ruta sabin. sep. Sil. sol-t-ae. spong. STAPH. strept-ent. sulph. teucr. tritic-vg. vanil. wies. zinc-p. zinc.

BLEEDING GUMS

If proper tooth cleaning is not done, plaque and tartar can develop which may cause chronic inflammation of the gums called as gingivitis (Psora/ Sycosis). Lack of proper hygiene causes the bleeding. Dental flossing is beneficial. Dental floss is a cord of thin filaments used to remove food and dental plaque from between teeth in areas a toothbrush is unable to reach.

MOUTH - BLEEDING – Gums Agar. agav-a. ail. alum-p. alum-sil. Alum. alumn. Am-c. ambr. anac. Ant-c. ant-t. apis arg-met. Arg-n. arn. ars-h. ars-s-f. ars. arum-m. arum-t. arund. asc-t. aur-i. aur-s. aur. bapt. BAR-C. bar-i. bar-m. bar-s. Bell. berb. bit-ar. borx. BOV. bufo calc-sil. CALC. carb-an. CARB-V. carbn-s. carl. cary. Caust. cedr. Chel. chinin-s. cist. colch. con. crot-c. CROT-H. crot-t. cyclosp. der. dros. erig. euphr. fago. ferr-ar. ferr-i. ferr-ma. ferr-p. ferr. Graph. Ham. Hep. hippoz. hir. hyos. Iod. irid-met. kali-ar. kali-bi. kali-br. kali-c. kali-chl. kali-i. kali-m. kali-n. Kali-p. kali-s. kali-sil. ketogl-ac. kreos. lac-c. lac-h. LACH. lob-s. lyc. mag-c. Mag-m. MERC-C. merc-n. MERC. mez. mim-h. Moni. mur-ac. musca-d. Myric. nat-ar. nat-c. NAT-M. nat-p. nat-sil. NIT-AC. Nux-m. Nux-v. olib-sac. ox-ac. oxal-a. ozone petr-ra. petr. Ph-ac. PHOS. pin-con. plan. plb. positr. propl. psil. Psor. Puls. ran-s. rat. rhus-g. rhus-t. rob. ruta sacch-a. sal-ac. Sang. Sec. sel. SEP. Sil. sin-n. sphing. spig. spong. Staph. Sul-ac. sul-i. Sulph. tab. tarax. tarent. tell. tep. Ter. tetox. thuj. tril-p. tritic-vg. tub-r. tub. vanil. visc. zinc-p. Zinc.

MOUTH - BLEEDING - Gums – morning ham. ruta sep. tritic-vg. vanil.

MOUTH - BLEEDING - Gums – afternoon chel. plan.

MOUTH - BLEEDING - Gums - afternoon - 15 h ferr-i.

MOUTH - BLEEDING - Gums - accompanied by – indigestion kali-p.

MOUTH - BLEEDING - Gums - accompanied by - sour taste graph.

MOUTH - BLEEDING - Gums - black blood but-ac. graph.

MOUTH - BLEEDING - Gums - black blood - oozes out bov. kreos.

MOUTH - BLEEDING - Gums - black blood - teeth are extracted; when Ars.

MOUTH - BLEEDING - Gums - cleaning them, when am-c. Anac. bung-fa. calc-s. Carb-v. carc. dream-p. Graph. ham. Hir. irid-met. kali-chl. kali-p. kali-s. Lyc. olib-sac. ox-ac. ozone ph-ac. Phos. plac. podo. positr. ruta sacch-a. sep. spong. Staph. sulph. symph. Ter. tritic-vg. vanil.

MOUTH - BLEEDING - Gums - coagulates quickly; blood kreos.

MOUTH - BLEEDING - Gums – copious ambr. ruta

MOUTH - BLEEDING - Gums – easily Agav-a. alum. Am-c. ambr. Anac. Ant-c. apis arg-met. Arg-n. Arn. ars-h. ars-i. ars. arum-m. asc-t. aur-ar. aur. bapt. bar-c. benz-ac. berb. borx. Bov. calc-i. calc. Carb-an. CARB-V. CAUST. Cist. con. CROT-H. echi. gran. Ham. HEP. hippoz. hydrog. Iod. Kali-chl. Kali-p. KREOS. lac-e. LACH. luna lyc. Mag-m. MERC-C. Merc-i-f. Merc. NAT-M. nit-ac. Ph-ac. PHOS. plan. rob. ruta scroph-n. Sep. sil. staph. Sul-ac. sulph. tell. tub. Zinc.

MOUTH - BLEEDING - Gums - extraction of teeth; profuse after alumn. ARN. ars. bov. Calen. chin. Ham. Kreos. LACH. mill. PHOS. tril-p.

MOUTH - BLEEDING - Gums - fever; during carb-v. graph. phos. Staph.

MOUTH - BLEEDING - Gums - menses - during - agg. Cedr.

MOUTH - BLEEDING - Gums - menses - during - agg. - Around decayed tooth bell.

MOUTH - BLEEDING - Gums - menses - suppressed menses; from Calc.

MOUTH - BLEEDING - Gums - pain; with agar.

MOUTH - BLEEDING - Gums - perspiration; during ars. carb-v. merc. nat-m. Sep. STAPH. sulph.

MOUTH - BLEEDING - Gums - pressing with finger; large quantity oozes when Bapt. graph. staph.

MOUTH - BLEEDING - Gums – scanty but-ac.

MOUTH - BLEEDING - Gums – scurvy ant-t. ARS. carb-ac. Carb-an. cit-l. coch. hydr. kali-perm. merc-i-r. Mur-ac. Nat-m. Nux-v. Sulph.

MOUTH - BLEEDING - Gums - sucking them; on Am-c. Bov. CARB-V. kali-bi. Nit-ac. Rat. rosm. ruta tritic-vg. zinc.

MOUTH - BLEEDING - Gums – thick but-ac.

MOUTH - BLEEDING - Gums - touch agg. carb-v. fic-m. Hep. lyc. **MERC.** Nat-c. ph-ac. **PHOS.** plb. Sep. sol-t-ae. sul-ac. zinc.

MOUTH - SCORBUTIC Gums Agav-a. all-s. alum. Alumn. Am-c. Am-m. Anan. Ant-c. ant-t. arn. Ars-i. ars-s-f. **ARS.** **ASTAC.** Aur-m-n. aur. bapt. Bov. Brom. bry. cal-ren. Calc. Camph. canth. **CAPS.** Carb-an. **CARB-V.** Carbn-s. caust. chinin-s. chr-ac. Cic. Cist. coch. con. Dulc. echi. fl-ac. Hep. Iod. Kali-c. **KALI-CHL.** Kali-i. Kali-m. kali-n. **KALI-P.** **KREOS.** lac-ac. lach. Lyc. mag-c. **MERC.** mez. **MUR-AC.** Nat-m. Nit-ac. Nux-m. Nux-v. olnd. Ph-ac. Phos. phyt. plb. Psor. sabin. sacch. sep. sil-mar. sil. Staph. sul-ac. Sulph. syph. Ter. thuj. zinc-p. Zinc.

MOUTH - SCORBUTIC Gums - salt eaters; in coch.

HALITOSIS- BAD BREATH

Sometimes regardless of impeccable oral hygiene, bad breath may appear (Psora/ Syphilis/ Sycosis). Commonly, bad breath is due to poor oral hygiene and large accumulations of tartar, the calcified plaque, impossible for a tooth brush or floss or mouthwash. The tartar causes inflammation, sometimes pus and a terrible odor.

MOUTH - ODOR – acrid agar.

MOUTH - ODOR – alkaline Kali-c.

MOUTH - ODOR – bad Arn. ars. aur. bacls-10. bapt. Carb-v. cham. dros. elaps lach. Merc. morg-p. nit-ac. Nux-v. puls. sep. ser-a-c. sulph. verat-v.

MOUTH - ODOR - bad – morning ser-a-c.

MOUTH - ODOR - bad - sense of ant-c. bar-c. bell. chin. cocc. laur. nat-m. ol-an. plan. spig.

MOUTH - ODOR – burnt dros.

MOUTH - ODOR - burnt - cough agg.; during dros.

MOUTH - ODOR – cadaverous **ARS.** caps. Carb-v. Dulc. Hyos. Lach. **NIT-AC.** phos. pyrog.

MOUTH - ODOR - cadaverous - morning - evening; and Hyos.

MOUTH - ODOR – cheesy Aur. Hep. Kali-c. kali-p. mez.

MOUTH - ODOR - chloroform of ether; like verat-v.

MOUTH - ODOR - cress; like par.

MOUTH - ODOR – earthy mang. stront-c.

MOUTH - ODOR - earthy – morning mang.

MOUTH - ODOR - eating; after arn. aur. carb-v. cham. merc. nux-v. sil. Sulph. zinc.

MOUTH - ODOR - eggs; like rotten arn. querc-r-g-s.

MOUTH - ODOR – fecal bell.

MOUTH - ODOR - fever; during arn.

MOUTH - ODOR - fish brine anac. bell. bufo calc Graph. hep med. Ol-an sanic Tell thuj. uran-n.

MOUTH - ODOR - fish brine - asthma attack – before **SANIC.**

MOUTH - ODOR – garlicky Ars. kalag. petr. sin-n. Tell.

MOUTH - ODOR - herring; like spoiled Chel.

MOUTH - ODOR - horse-radish agar.

MOUTH - ODOR - menses; during ovi-p.

MOUTH - ODOR – mercury ant-c. bar-m. merc. sil.

MOUTH - ODOR – metallic berb. Merc-i-f. mez.

MOUTH - ODOR - milk; like spong.

MOUTH - ODOR - milk; like - fresh milk; like Dros.

MOUTH - ODOR – musty Alum. Crot-h. eup-per. nat-c. pot-e. rhus-t.

MOUTH - ODOR – nausea diph.

MOUTH - ODOR – offensive abies-n. acet-ac. acon. Agar. ail. All-c. aloe alum-p. alum-sil. alum. am-c. Ambr. Anac. anan. ang. ant-c. ant-t. Anthraci. apis aq-mar. arg-met. Arg-n. arge-pl. ARN. ARS-I. ars-s-f. ARS. Arum-t. asar. aur-ar. aur-s. Aur. bacls-10. bamb-a. Bapt. Bar-c. bar-m. bar-s. Bell. berb. bism. borx. bov. brom. Bry. bufo cact. calag. calc-i. calc-s. calc-sil. Calc. camph. canth. Caps. CARB-AC. carb-an. CARB-V. Carbn-s. carc. Carl. cas-s. castm. Caust. CHAM. CHEL. Chin. chinin-ar. chinin-m. Cimic. cina cist. Clem. coc-c. cocc. coch. coff. cop. Croc. crot-h. cupr-ar. cupr. cypra-eg. daph. dig. diosm. Diph. dros. Dulc. elaps ferr. Fl-ac. Gels. gink-b. glycyr-g. Graph. hell. Hep. hir. Hyos. ign. indol. Iod. ip. irid-met. kali-ar. Kali-bi. kali-br. Kali-c. kali-chl. Kali-i. kali-m. kali-n. KALI-P. kali-perm. kali-s. kali-sil. Kali-tel. KREOS. Lac-c. Lac-d. lac-h. LACH. laur. led. Lyc. m-ambo. m-arct. m-aust. Manc. mang. med. meph. MERC-C. merc-cy. Merc-d. Merc-i-f. MERC. mez. mim-p. Mur-ac. nat-c. NAT-M. Nat-s. nat-sil. Nat-tel. nicc. NIT-AC. Nux-m. Nux-v. olib-sac. olnd. Petr. Ph-ac. phos. Phyt. plan. PLB. podo. psor. Puls. Pyrog. querc-r. Querc. rheum rhus-t. ruta sabin. sal-ac. sanic. sars. sec. seneg. Sep. sil. sin-n. spig. Stann. staph. stram. stront-c. suis-em. suis-pan. Sul-ac. sul-i. SULPH. syph. ter. teucr. thal-xyz. thea thuj. TUB. valer. verat-v. verb. zinc.

MOUTH - ODOR - offensive – morning acet-ac. agar. am-c. ambr. apis Arg-n. arn. Aur. bapt. bell. cact. Camph. castm. chin. cimic. cop. fago. grat. hyos. lyc. mang. nat-sil. NUX-V. phys. PULS. rheum sang. sars. Sil. sulph. thea verb.

MOUTH - ODOR - offensive – evening aur. puls. sulph.

MOUTH - ODOR - offensive - evening - or night puls. sulph.

MOUTH - ODOR - offensive – night aur. Podo. puls. sulph.

MOUTH - ODOR - offensive - accompanied by – cancer cit-ac. kali-perm. oxal-a. sep.

MOUTH - ODOR - offensive - accompanied by - Gums - inflammation of kreos.

MOUTH - ODOR - offensive - accompanied by - Teeth; caries of kreos.

MOUTH - ODOR - offensive - chill; during anac. Apis ARN. ars. aur. bell. bry. carb-v. cham. dulc. graph. ip. lach. lyc. MERC. nit-ac. Nux-v. petr. puls. rhus-t. sep. sil. sul-ac. Sulph.

MOUTH - ODOR - offensive - cough, during all-s. ambr. arn. CAPS. dros. graph. lach. m-aust. mag-c. merc. mez. ph-ac. sang. sep. stann. sulph.

MOUTH - ODOR - offensive - diphtheria; during Diph. kreos. merc-c.

MOUTH - ODOR - offensive - eating, after cham. Nux-v. sulph.

MOUTH - ODOR - offensive - menses – before caul. Sep.

MOUTH - ODOR - offensive - menses – during bar-m. Cedr. Merc. ovi-p.

MOUTH - ODOR - offensive - oneself; to kali-bi. ol-an.

MOUTH - ODOR - offensive - perspiration; during acon. ARN. bry. carb-v. Cham. ip. lach. MERC. nit-ac. NUX-V. puls.

RECTUM - CONSTIPATION - accompanied by - Mouth - odor; offensive carb-ac.

MOUTH - ODOR –putrid acon. act-sp. ail. alum-p. alum. Alumn. ambr. Anac. Apis Arg-met. Arg-n. ARN. ARS-I. ARS. Arum-t. aur-ar. aur-i. Aur-m-n. aur-s. Aur. bac. Bapt. bar-c. Bar-m. bar-s. Bell. borx. bov. brom. bry. bufo but-ac. cadm-s. calc-f. calc-sil. calc. camph. Caps. CARB-AC. carb-an. Carb-v. carbn-s. cedr. CHAM. chin. chinin-ar. chlol. Chlor. cina cist. coca Crot-h. daph. dig. Dulc. elaps gels. gink-b. Graph. guat. Hell. hip-ac. Ign. iod. Kali-bi. Kali-br. Kali-chl. kali-m. KALI-P. KREOS. Lac-c. Lach. Lyc. Maland. Mang. Merc-c. MERC. mez. moni. Mur-ac. musca-d. NAT-M. NIT-AC. Nux-v. ol-j. petr. Ph-ac. phos. PHYT. plan. PLB. PSOR. Puls. pulx. pyrog. Rhus-t. ruta sabin. sal-ac. sang. sec. seneg. sep. SPIG. stann. staph. stram. sul-i. sulph. syph. TUB.

TEETH - ODOR from, offensive calc. carb-v. **Caust.** graph. iod. kali-c. **KREOS.** merc. mez. phos. **Plb. Rhus-t.**

TEETH - OIL; sensation as if covered with aesc.

TEETH - OPENING THE MOUTH - agg. bry. caust. hep. nux-v. phos. puls. sabad. sabin.

TEETH - OPENING THE MOUTH - amel. **Mez.**

MOUTH - ODOR - putrid –morning ambr. arg-n. camph. castm. crot-h. grat. kali-p. lyc. med. puls.

MOUTH - ODOR - putrid - morning - and night aur. puls.

MOUTH - ODOR - putrid – night syph.

MOUTH - ODOR - putrid - anger; after am.

MOUTH - ODOR - putrid - cough agg.; during **Caps.** dros. m-aust. sep.

MOUTH - ODOR - putrid - eating - after - agg. cham. nux-v.

MOUTH - ODOR - putrid - eating - while - agg. chr-ac.

MOUTH - ODOR - putrid - menses; during **Cedr.**

MOUTH - ODOR – sickening agar. aloë **Arn.** ars-h. ars. berb. canth. carb-n-h. chl-l. **Croc.** gins. kali-br. merc. nat-c. **Nit-ac.**

MOUTH - ODOR – sour agar. aloë cham. coc-c. crot-h. **Eup-per.** **Graph.** mag-c. nat-m. nicc. **Nux-v.** podo. rheum sep. **Sulph.** verat.

MOUTH - ODOR - stool; like bapt. bell. indol. querc.

MOUTH - ODOR – sulphurous arge-pl. nux-v. sulph.

MOUTH - ODOR – sweetish carb-an. **Merc.** nit-ac. nux-v. uran-met. uran-n.

MOUTH - ODOR - urine, like benz-ac. canth. **Coloc.** **Graph.** nat-m. nit-ac. ol-an. sec. urt-u.

MOUTH - ODOR - vinegar; like **Borx.** **Hell.** sul-ac.

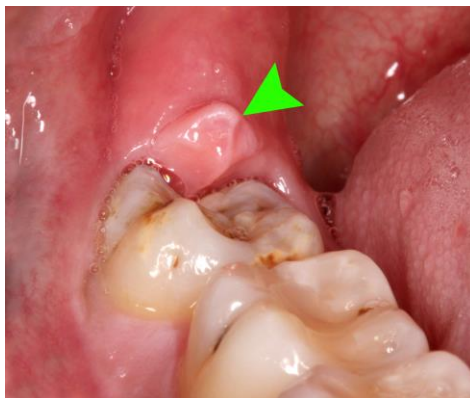
CHEST - PALPITATION of heart - accompanied by - Mouth; putrid odor in spig.

MOUTH - SALIVATION - accompanied by - odor from mouth; putrid hell. iod. **Kali-br.**

STOMACH - VOMITING - accompanied by - breath; foul cupr.

ULCERS

Ulcers are very painful usually round or oval, whitish or yellowish lesions found throughout the mouth (Psora/ Syphilis). The most common cause is trauma to the delicate oral tissues from sharp food or objects. Ill-fitting dentures can also cause rubbing on the gums causing ulcers.



MOUTH - ULCERS – Gums acon. **Agn.** aids. aloë alum-sil. alum. am-c. anan. ang. ars. aur-ar. aur-i. aur-m. aur-s. aur. bapt. bell. berb. **BISM.** bond. borx. bov. bufo **Calc.** caps. **Carb-an.** **Carb-v.** caust. **Cist.** colch. corn. **Crot-c.** **Cupr.** dream-p. emetin. ephe-si. gink-b. **Hep.** hippoz. hydr.

hydrog. Iod. Kali-bi. kali-c. kali-chl. Kali-i. **KREOS.** lac-c. Lach. Lyc. mag-m. mand. Merc-c. merc-sul. **MERC.** mill. mur-ac. **NAT-M.** nat-p. nat-s. nicc. nit-ac. Nux-v. ox-ac. petr. Ph-ac. **PHOS.** phyt. plan. plb. **PSOR.** raph. ruta sabin. sacch-a. sang. Sep. Sil. stann. Staph. Sul-ac. sul-i. tell. Thuj. tub. zinc-p. zinc.

MOUTH - ULCERS - Gums - Base lardaceous Hep.

MOUTH - ULCERS - Gums – Inner Staph.

MOUTH - ULCERS - Gums – Lower oncor-t. phos. sabin. zinc.

MOUTH - ULCERS - Gums - discharging blood which tastes salty alum.

MOUTH - ULCERS - Gums - exuding blood on pressure bov.

MOUTH - ULCERS - Gums – gray kreos.

MOUTH - ULCERS - Gums – scorbutic acet-ac. mur-ac.

MOUTH - ULCERS - Gums - sensation of - Root of tooth; at am-c.

MOUTH - ULCERS - Gums – sloughing Merc-c. merc-i-r. merc-pr-r. Merc. op. staph.

MOUTH - ULCERS - Gums – yellowish hell. sulph.

GUM- ABSCESS

An abscess can form for several reasons (Psora/ Syphilis). Poor oral hygiene is the main cause. A thorough cleaning is needed. During pregnancy hormones can cause bumps on the gums.



MOUTH - ABSCESS - Gums; of alum. am-c. aur. bell. brox-gau. **Bufo** calc-f. caust. cham. echi. euph. **Hecla** helodr-cal. Hep. jug-r. kali-bi. lach. merc. petr. phos. plb. Sil. staph. sul-ac.

MOUTH - ABSCESS - Gums; of – painful borx.

MOUTH - ABSCESS - Gums; of - recurring frequently **Bar-c.** calc. **CAUST.** Hep. Lyc. med. Nux-v. Sil. Sulph.

MOUTH - ABSCESS - Gums; of - sensation of am-c.

MOUTH - BOILS at gums agn. anan. arn. aur. borx. carb-an. **Carb-v.** caust. chel. euph. hecla jug-r. Kali-chl. Kali-i. lac-c. Lyc. Merc. mill. Nat-m. nat-p. nat-s. Nux-v. petr-ra. Petr. ph-ac. Phos. plan. plb. sanic. **SIL.** staph. strept-ent. sulph.

MOUTH - BOILS at gums - right upper molar bung-fa.

MOUTH - BOILS at gums - small, painful to touch - Upper canine; near left **Agn.** cassia-s.

MOUTH - FISTULA – Gums **Aur-m.** **Aur.** **Bar-c.** **Borx.** **Calc-f.** **Calc.** **canth.** **CAUST.** **coch.** **FL-AC.** **gink-b.** **hecla hep.** **Kali-chl.** **Lyc.** **mag-c.** **Nat-m.** **nit-ac.** **petr.** **ph-ac.** **phos.** **physala-p.** **puls.** **querc-r.** **SIL.** **Staph.** **Sulph.**

MOUTH - FISTULA - Gums - Canine - Upper; near – right fl-ac.

MOUTH - FISTULA - Gums - Incisors – Upper **canth.** **ozone**

MOUTH - FISTULA - Gums – Lower **Hep.** **Merc.**

MOUTH - FISTULA - Gums – Upper **calc.** **canth.** **Kreos.** **Phos.**

MOUTH - PUSTULES – Gums **aur.** **calc.** **Carb-an.** **Carb-v.** **morg-g.** **nat-s.** **petr.** **psor.** **puls.**

MOUTH - SUPPURATION – Gums **alum.** **am-c.** **arg-n.** **Borx.** **CALC.** **canth.** **carb-an.** **carb-v.** **caust.** **cist.** **fl-ac.** **Hep.** **kali-bi.** **kali-c.** **lach.** **lyc.** **merc-i-f.** **Merc.** **mez.** **nat-m.** **nat-s.** **petr.** **Phos.** **plan.** **puls.** **SIL.** **Staph.** **sul-ac.** **SULPH.**

CHIPPED TOOTH

Fractures on teeth, especially front teeth are common. However, if there is pain, the tooth will need to be further evaluated to determine the status of the nerve (Causa occasionalis). A large fracture should be treated quickly even without pain to prevent further deterioration of the tooth.



TEETH - CRACKING when rubbing **sel.** **squil.**

TEETH - BREAKING off **borx.** **Calc-f.** **calc.** **euph.** **fl-ac.** **lach.** **nat-hchls.** **nat-m.** **plb.** **sil.** **sul-ac.**

TEETH - BREAKING off - clenching jaw; from chronic **syph.**

TRAUMA- MOUTH / TEETH

If a tooth is knocked completely out of the mouth it can be placed back into the socket that is the best thing to do (Causa occasionalis). Mobile teeth can usually be splinted by the dentist to prevent loss or further movement. Often injured teeth need root canal therapy to prevent them from causing infections.

MOUTH - INJURIES - agg. **ACON.** **bell.** **carb-v.** **cham.** **CIC.** **con.** **ign.** **lach.** **MERC.** **nit-ac.** **puls.** **sul-ac.**

GINGIVITIS

Gingivitis is the mildest form of periodontal disease. It causes the gums to become red, swollen, and bleed easily (psora/ Sycosis). Gingivitis is often caused by inadequate oral hygiene. Factors that may contribute to gingivitis include, diabetes, smoking, aging, genetic predisposition, systemic diseases and conditions, stress, inadequate nutrition, puberty, hormonal fluctuations, pregnancy, substance abuse, HIV infection, and certain medication use.



MOUTH - INFLAMMATION – Gums acon. **Alumn.** am-c. anan. arg-n. ars-i. ars. aur-m. aur. bamb-a. bell. borx. bov. bufo **Calc-f.** calc-s. calic. **Caps.** carb-an. **Cham.** chinin-s. cit-ac. cob-n. coff. com. dulc. eug. ferr-p. **Hecla Hep.** Iod. kali-bi. kali-br. kali-c. **Kali-chl.** kali-m. kali-n. kali-p. kali-s. **KREOS.** lach. lap-la. luf-op. lyss. **M-arct.** mag-c. **Merc-c.** **Merc.** Moni. morg-g. **Mur-ac.**

naja **NAT-M.** **Nux-v.** **PHOS.** **Phyt.** pitu-gl. plb. **Puls.** rhus-t. ruta sal-ac. sarr. **Sep.** **SIL.** spiros-af. spong. strept-ent. sulph. thuj. tritic-vg. tub. vanil.

MOUTH - INFLAMMATION - Gums – chronic merc-c. phos. sil.

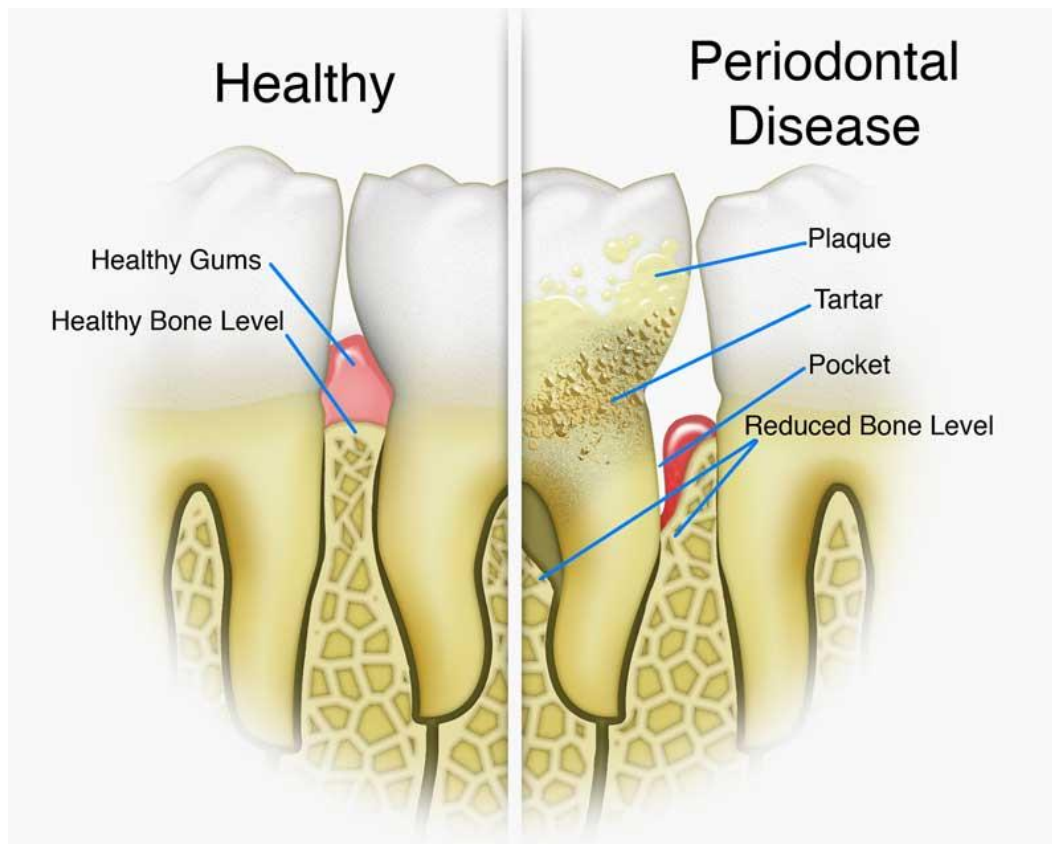
MOUTH - INFLAMMATION - Gums – Lower am-c. **Merc.** petr. sil. sulph.

MOUTH - INFLAMMATION - Gums - Lower - Incisors; at nat-sil. petr.

MOUTH - INFLAMMATION - Gums - Molars; around pitu-gl.

PERIODONTITIS

Chronic gingivitis can advance to periodontitis and plaque can spread and grow below the gum line (Psora/ Sycosis/ Syphilis). Toxins produced by the bacteria in plaque irritate the gums and the tissues and bone that support the teeth are broken down and destroyed due to chronic inflammation. Gums separate from the teeth, forming pockets that become infected. As the disease progresses, the pockets deepen and more gum tissue and bone are destroyed. Eventually, teeth can become loose and may have to be removed.



Periodontitis as a manifestation of systemic diseases often begins at a young age. Systemic conditions such as heart disease, respiratory disease, and diabetes are associated with this form of periodontitis.

MOUTH - INFLAMMATION - Gums – Periosteum **hyos.**

MOUTH - INFLAMMATION - Gums - Upper – left **Kreos.**

BIBLIOGRAPHY



Encyclopedia Homoeopathica



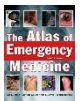
Radar 10



Oral Manifestations of Disease > DISEASES OF THE TEETH AND PERIODONTAL STRUCTURES Harrison's Principles of Internal Medicine ... Tooth formation begins during the sixth week of embryonic life and continues through 17 years...



Chapter 142. Ectodermal Dysplasias > Tooth and Nail Syndrome (Witkop Syndrome; Hypodontia with Nail Dysgenesis; OMIM #189500) Fitzpatrick's Dermatology in General Medicine, 8e



Chapter 6. Mouth > Tooth Fractures The Atlas of Emergency Medicine, 3e



Chapter 32. Emergency Disorders of the Ear, Nose, Sinuses, Oropharynx, & Mouth > Tooth Fracture CURRENT Diagnosis & Treatment Emergency Medicine, 7e ... Figure 32-7. The Ellis tooth fracture classification system. Tooth fractures are graded...



Chapter 23. Dental: Diagnosis, Equipment, Blocks, and Treatment > Tooth Surfaces Improvised Medicine: Providing Care in Extreme Environments ... Fig. 23-2. Tooth surfaces. (Redrawn from Frencken et al. 1) The following names...



Chapter 23. Dental: Diagnosis, Equipment, Blocks, and Treatment > A Tooth's Three Layers Improvised Medicine: Providing Care in Extreme Environments ... Fig. 23-3. Tooth anatomy. Tooth problems may involve any of the tooth's three layers...