

# Rheumatic Heart Disease and Homoeopathy

© **Dr. Rajneesh Kumar Sharma** MD (Homoeopathy)  
**Dr. (Km) Ruchi Rajput** BHMS  
**Dr. Abhishek Kumar** BHMS  
Homoeo Cure & Research Centre P. Ltd.  
NH 74- Moradabad Road  
Kashipur (UTTARANCHAL) - INDIA  
Ph- 09897618594

## **Definition**

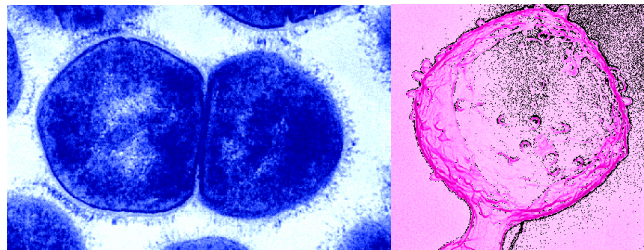
Rheumatic (roo-MAT'ik) heart disease is a condition in which the heart valves are damaged (Psora- Syphilis) by rheumatic fever, an inflammatory condition (Psora- Sycosis) affecting several body tissues including the heart, brain and joints.

## **Prevalence**

It can affect anyone of any age but is more commonly seen in children.

## **Pathophysiology**

Rheumatic fever develops as a consequence of a strep throat infection (Psora), also called strep pharyngitis (caused by  $\beta$  Streptococcus haemolyticus Lancefield group- A, Gram positive bacterium) that has progressed and been left untreated. It is the most common bacterial infection of the throat.



### ***Electron Micrograph of Streptococcus haemolyticus Group- A Bacterium***

Lancefield simplified the classification of streptococci by showing that surface antigens (carbohydrates) extracted from the cell wall of streptococci could react with carbohydrate-specific antisera prepared in rabbits. Group- A streptococci may be subdivided into over 130 different types based on a variable surface protein, called M protein.

Rheumatic fever often leads to rheumatic heart disease. The valves of the heart can become diseased by this disorder and may become so inflamed and damaged (Pseudopsora) that they cannot close fully or open properly due to stiffness (Psora). This can cause the blood to in-flow ineffectively through the valves and can also contribute to blood leaking backwards resulting in an accumulation of fluids (Sycosis). These fluids can cause enlargement of the heart (Sycosis) and can lead to fluid overload in the lungs and limbs causing swollen ankles (Sycosis).

## **Signs and Symptoms**

As the condition affects mainly the valves of the heart, the symptoms are similar to those with other conditions of the valves and can include dizziness, chest pain, shortness of breath and tiredness (Psora). There may be no symptoms initially, but they can develop over the course of time.

## **Symptoms of strep throat**

Symptoms include:

- sudden onset of sore throat (Psora)
- pain on swallowing (Psora)
- fever, usually 101–104°F (Psora)
- headache (Psora)
- red throat/tonsils (Psora)
- abdominal pain, nausea and vomiting may also occur, especially in children (Psora)

In some people, strep throat is very mild with just a few symptoms. Also, sore throats are caused more often by viruses than by a strep infection. Viral throat infections don't raise the risk of rheumatic fever.

## **Symptoms of rheumatic fever**

Symptoms may include:

- fever (Psora)
- painful, tender, red swollen joints (Psora- Sycosis)
- pain in one joint that migrates to another one (Pseudopsora)
- heart palpitations (Psora)
- chest pain (Psora)
- shortness of breath (Psora)
- skin rashes (Psora)
- fatigue (Psora)
- small, painless nodules under the skin (Psora)

The symptoms of rheumatic fever usually appear about three weeks after the strep throat.

## **Clinical examination**

### **A- Mitral Stenosis**

Symptoms of pulmonary congestion-

- dyspnoea (Psora- Sycosis)
- cough, and, occasionally (Psora)
- hemoptysis (Pseudopsora)

Physical signs of pulmonary venous congestion-

- right heart volume and (Sycosis)
- pressure overload (Sycosis)

On auscultation-

- Loud S 1, early diastolic opening snap, and
- rumbling diastolic murmur (Pseudopsora)

Echocardiography-

The diagnosis and severity of MS can be confirmed by two-dimensional and Doppler echocardiography. Transesophageal echocardiography (TEE) can also be used to confirm the diagnosis, define the anatomy more fully, and provide diagnostic information in patients in whom transthoracic echocardiography is suboptimal.

Cardiac catheterization-

It is indicated in patients in whom there is a likelihood of concomitant coronary artery disease and in whom echocardiographic studies are either technically suboptimal or nondiagnostic.



*Valves Damaged by RHD*

## **B- Aortic Stenosis**

The diagnosis of significant AS may be difficult, as the condition may be asymptomatic for a number of years. Clinical suspicion often is raised by the presence of one or more of the classic symptoms in the triad of-

- angina
- syncope, (Psora) and
- heart failure. (All the three miasms)

Physical findings-

- slowly rising carotid pulse that is sustained (pulsus parvus et tardus) and (Psora)
- mid- to late-peaking systolic murmur that is typically harsh in quality. (Pseudopsora)

The pressure gradient across the stenotic aortic valve is directly related to the severity of obstruction and cardiac output. Therefore, the intensity of the systolic murmur may diminish as the cardiac output decreases with increasingly severe AS. In general, murmurs of long duration that peak late in systole indicate severe AS.

Echocardiography-

Doppler echocardiography provides a noninvasive estimation of the aortic valve gradient and aortic valve area, which correlates well with the findings at cardiac catheterization.

Cardiac catheterization-

Most adult patients being considered for aortic valve replacement (AVR) require preoperative cardiac catheterization to determine the extent of concomitant coronary artery disease.

## **C- Mitral Regurgitation**

Physical findings-

- well-preserved carotid pulsations (Psora)
- an enlarged point of maximal impulse, and (Psora)
- an apical holosystolic murmur. (Psora- Sycosis)

Echocardiography-

Doppler and two-dimensional echocardiography confirm the diagnosis, estimate the severity of MR, and provide clues to its etiology. TEE is particularly useful for the evaluation of the mitral valve and is commonly used to evaluate the patient with MR.

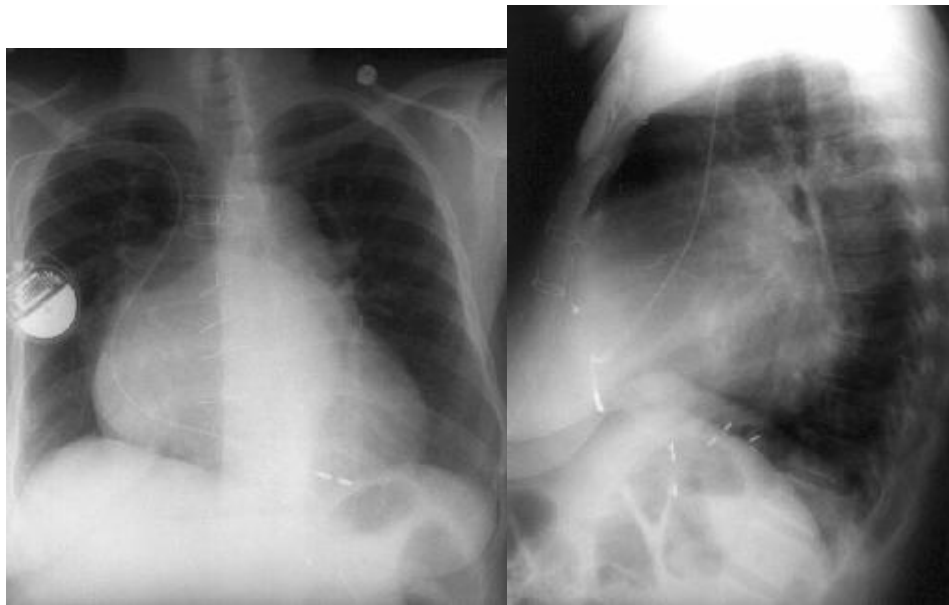
#### **D- Aortic Insufficiency**

It may be suspected on the basis of clinical findings, including-

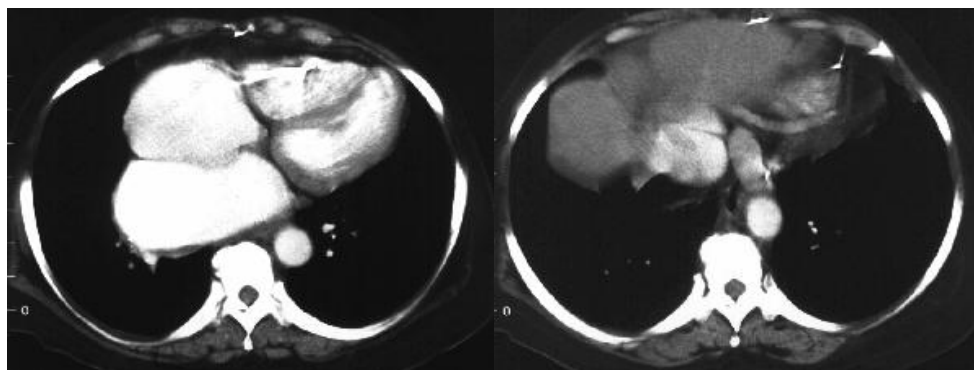
- a wide pulse pressure (Psora- Sycosis)
- bounding pulses, (Psora- Sycosis) and
- an aortic diastolic murmur. (Psora- Sycosis)

The presence of AI can be confirmed by two-dimensional and Doppler echocardiography or cardiac catheterization with ascending aortography.

#### **Radiological Examination**



*(Figs 1a and 1b)*



*(Figs. 2a and 2b)*

The PA and lateral chest x-ray shows marked enlargement of the cardiac silhouette. The course of the unipolar pacer suggest marked right atrial enlargement. There is a "double density" and splaying of the carina c/w left atrial enlargement (Fig. 1a and b). The CT shows massive enlargement of the right and left atria (Fig 2a.), with marked enlargement of both the coronary sinus and great cardiac vein (Fig 2b.) The ventricles are of normal size.

The differential diagnosis of right atrial enlargement includes tricuspid insufficiency secondary to bacterial endocarditis (often seen in IV drug abusers), carcinoid syndrome, hyperthyroidism and Ebstein's anomaly. When coupled with the presence of a giant left atrium, rheumatic heart disease is a primary consideration. In the setting of right atrial enlargement and tricuspid valve disease, it is important to determine the state of the right ventricle. The most common cause of tricuspid valve disease is secondary to right ventricular failure/pulmonary artery hypertension. It is important to consider right ventricular disease in the evaluation of tricuspid valve disease. CT shows evidence of a component of tricuspid insufficiency, with enlargement of the intrahepatic IVC and reflux of contrast into the IVC following the patients subclavian vein injection. Tricuspid insufficiency can cause a mottled appearance of the liver in early phase of the contrast bolus, and can occasionally mimic metastatic disease of the liver.

Rheumatic heart disease has a number of classic radiographic findings, including the "double density" of the enlarged left atrium, the splaying of the mainstem bronchus, and posterior displacement of the left lower lobe bronchus and left atrial enlargement on the lateral film. Left atrial appendage enlargement is felt to be highly suggestive of mitral stenosis secondary to rheumatic heart disease.

### **Laboratory Investigations**

- Increased acute phase reactants, including sedimentation rate (ESR) and C-reactive protein (CRP)
- Bacteriological or serological evidence of group A
- antistreptolysin O (ASO),
- Streptozyme, or anti-deoxyribonuclease B (DNase)
- Anemia

### **Differential Diagnosis**

- Valvar Aortic Stenosis
- Human Immunodeficiency Virus Infection
- Aortic Valve Insufficiency
- Kawasaki Disease
- Bicuspid Aortic Valve
- Congenital Mitral Stenosis
- Appendicitis
- Mitral Valve Insufficiency
- Arthritis, Septic
- Mitral Valve Prolapse
- Cardiac Tumors
- Viral Myocarditis
- Dilated Cardiomyopathy
- Malignant Pericardial Effusion
- Carnitine Deficiency
- Bacterial Pericarditis
- Coccidioidomycosis
- Viral Pericarditis
- Bacterial Endocarditis
- Sarcoidosis
- Congestive Heart Failure
- Systemic Lupus Erythematosus
- Histoplasmosis

- Transient Synovitis

### Some common Systemic Diseases With Cardiac Manifestations

Systemic Disorder	Common Cardiac Manifestations
Diabetes mellitus	CAD, atypical angina, CMP, systolic or diastolic CHF
Protein-calorie malnutrition	Dilated CMP, CHF
Thiamine deficiency	High-output failure, dilated CMP
Hyperhomocysteinemia	Premature atherosclerosis
Obesity	CMP, systolic or diastolic CHF
Hyperthyroidism	Palpitations, SVT, atrial fibrillation, hypertension
Hypothyroidism	Hypotension, bradycardia, dilated CMP, CHF, pericardial effusion
Malignant carcinoid	Tricuspid and pulmonary valve disease, right heart failure
Pheochromocytoma	Hypertension, palpitations, CHF
Acromegaly	Systolic or diastolic heart failure
Rheumatoid arthritis	Pericarditis, pericardial effusions, coronary arteritis, myocarditis, valvulitis
Seronegative arthropathies	Aortitis, aortic and mitral insufficiency, conduction abnormalities
Systemic lupus erythematosus	Pericarditis, Libman-Sacks endocarditis, myocarditis, arterial and venous thrombosis
HIV	Myocarditis, dilated CMP, pericardial effusion
Amyloidosis	CHF, restrictive CMP, valvular regurgitation, pericardial effusion
Sarcoidosis	CHF, dilated or restrictive CMP, ventricular arrhythmias, heart block
Hemochromatosis	CHF, arrhythmias, heart block
Marfan syndrome	Aortic aneurysm and dissection, aortic insufficiency, mitral valve prolapse
Ehlers-Danlos syndrome	Aortic and coronary aneurysms, mitral and tricuspid valve prolapse

Note: CAD, coronary artery disease; CHF, congestive heart failure; CMP, cardiomyopathy; SVT, supraventricular tachycardia.

### Complications

Review possible medical complications related to Rheumatic heart disease-

- Endocarditis
- Bacterial endocarditis
- Heart failure

### Homoeopathic Treatment

#### Repertory of RHD

- ABDOMEN - ENLARGED - Liver - heart disease; in **aur. mag-m.**
- BLADDER - URINARY complaints - accompanied by - Heart complaints and difficult respiration **LAUR. Lycps-v.**
- BLADDER - URINATION - feeble stream - breathing and heart symptoms; with difficulty of **LAUR.**
- Breathing - DIFFICULT, breathing - rheumatism of heart **Abrot. aur. Cact. cimic. Kalm. Psor. sep. Spong.**
- CHEST - ANEURYSM of – Heart **ambr. arn. ars. CACT. calc. carb-an. Carb-v. caust. ferr. graph. guaj. LACH. Lyc. nat-m. puls. rhus-t. spig. zinc.**
- CHEST - ANXIETY in - Heart, region of - dinner; after - leaning back in a chair; when **glon.**

- CHEST - ANXIETY in - Heart, region of - exertion agg.; after **Lyc.**
- CHEST - ANXIETY in - Heart, region of - lying - side; on - left - agg. **bell. glon. Nat-m. Phos. Spig.**
- CHEST - ANXIETY in - Heart, region of - moving about - agg. **Dig.**
- CHEST - ANXIETY in - Heart, region of – night **alum. ARS. aster. calc. cench. lyc. rhus-t.**
- CHEST - ANXIETY in - Heart, region of – paroxysmal **arg-n. KALM. lach. verat.**
- CHEST - ANXIETY in - Heart, region of - rheumatic complaints, in **Lach.**
- CHEST - ANXIETY in - Heart, region of - rising and walking about; after - amel. **glon.**
- CHEST - ANXIETY in - Heart, region of - sight of decisive colors **Tarent.**
- CHEST - ANXIETY in - Heart, region of **ACON. adon. Aeth. agar. agath-a. alum-p. alum. am-c. Ambr. Aml-ns. anac. ANT-T. apis apom. Arg-n. arn. Ars-i. ARS. aster. aur-ar. aur-i. Aur-m. AUR. BELL. bov. Brom. Cact. calc-i. calc-s. Calc. CAMPH. cann-s. Canth. CARB-V. Carbn-o. Carbn-s. carl. Caust. CENCH. Cham. chel. chin. chinin-ar. chinin-s. cic. cina cob. Cocc. Coff. colch. Con. croc. Crot-c. Cupr. cycl. Dig. echi. elaps elec. Euon. Ferr-i. ferr-p. Ferr. Gels. Glon. gran. graph. hed. hell. Helo-s. helo. hep. hydr-ac. hydr. hyos. IGN. indg. Iod. IP. kali-c. kali-m. KALM. kou. Kreos. Lach. lachn. Lact. lat-m. led. lipp. lob. Lyc. m-aust. MENY. Merc-c. Merc. mez. mosch. Naja nat-m. nat-s. nit-ac. Nux-v. olnd. op. ox-ac. petr. PHOS. Plat. Plb. pneu. Prun. psil. Psor. Puls. pyrog. ran-b. Rhus-t. sabad. sal-n. sec. sep. sil. Spig. Spong. stann. stict. stram. stroph-h. sulph. Tab. Tarent. THER. thuj. Verat. viol-t. vip. zinc.**
- CHEST - ANXIETY in - lying - side; on - left - agg. **PULS.**
- CHEST - ANXIETY in – night **Ars. aster. ign. lyc. PULS. Ran-b. sulph.**
- CHEST - COLDNESS - Heart - Region of **ACON. alum. arn. ars. bov. calc. camph. Carb-an. cic. graph. Helo-s. Helo. Kali-bi. Kali-chl. Kali-m. kali-n. lil-t. Nat-m. nux-m. olnd. Petr. pyrog. rhus-t. sec. spig. spong. sul-i. Verat.**
- CHEST - CONGESTION – Heart **ACON. am-c. Asaf. asar. Aur. bell. Calc. carb-v. cham. cupr. cycl. cyt-l. ferr-i. Ferr. GLON. hyper. Kali-c. laur. Lil-t. lyc. merc-c. nat-m. nit-ac. Nux-m. nux-v. phos. Puls. rhod. seneg. sep. sil. spig. sulph. thuj.**
- Chest - CONSTRICTION, chest, tension, tightness - heart, disease, acute rheumatic **asaf. kalm.**
- CHEST - CONSTRICTION, tension, tightness - heart disease, acute rheumatism, in **ASAF. cact.**
- CHEST - DILATATION of heart **adon. Alum. am-c. Ant-t. Apis ars-i. Ars. aur. Bar-c. Brom. CACT. calc. carb-v. cench. chlol. cimic. coff. conv. crat. cupr. dig. gels. grin. hydr-ac. iber. Iod. kali-bi. Kali-i. Lach. Laur. lil-t. Lyc. Lycps-v. merc-c. morg-g. Naja Nat-m. Nux-v. ph-ac. Phase. Phos. phys. plb. prun. Psor. Puls. rhus-t. saroth. seneg. spig. stroph-h. sulph. tab. thyr. verat-v.**
- CHEST - EDEMA; PULMONARY **acon. adon. Adren. Am-c. am-i. ANT-AR. ant-c. ANT-T. Apis apoc. ars-i. ARS. aspar. atra-r. Aur-i. aur. Bar-c. bell. beryl. brass-n-o. bry. cadm-s. camph. Carb-v. cham. chel. chin. chir-fl. coch. coff. colch. con. cortico. crot-h. crot-t. Dig. dros. Graph. hep. Hyos. ign. iod. Ip. jab. kali-c. Kali-i. Kali-p. LACH. lat-m. laur. loxo-lae. Lyc. MERC-SUL. merc. mosch. Nat-m. Nux-v. OP. Phos. pilo. plb. pulm-v. puls. Samb. Sang. Sec. senec. seneg. spong. squil. stront-c. stroph-h. sulph. thal-xyz. tub. verat.**
- CHEST - ENLARGED sensation – Heart **acon. bell. bov. bufo cench. cent. ham. kali-i. lach. med. pyrog. spig. stroph-h. stroph-s. sulph.**
- CHEST - FATTY degeneration of heart **adon-ae. adon. ARN. Ars-i. ARS. AUR-M. AUR. Bar-c. CACT. Calc. caps. carb-v. cimic. crat. crot-h. cupr-act. cupr. Ferr. fuc. Iod. KALI-C. kali-fcy. kali-p. kali-s. Kalm. lac-d. Naja Ph-ac. PHOS. phys. phyt. sacch. stroph-h. stry-ar. stry-p. vanad.**
- CHEST - FULLNESS – Heart **Acon. Aesc. aml-ns. ang. ant-t. arg-met. arg-n. Asaf. AUR-M. AUR. bamb-a. Bell. Bov. bufo Cact. caust. Cench. colch. coll. conv. cot. cycl. Glon. glyc. iber. LACH. lact-v. Lil-t. Lycps-v. med. naja Puls. pyrog. sel. sep. Spig. spong. stroph-h. SULPH. vanad. verat-v.**
- CHEST - GOUTY heart **aur-m. aur. Benz-ac. cact. Calc. Carb-v. Caust. Colch. conv. cupr. Kalm. Led. LYC. Puls. Spong.**
- CHEST - Heart and region of - rheumatism, metastasis to **ACON. ars. aur. Bry. CAUST. Kalm. LACH. Puls. Spig.**
- CHEST - HEART failure - accompanied by - weakness; general **adon. am-c. ars.**
- CHEST - HEART failure **Acetan. adon. adren. aether agarin. Alco. am-c. am-caust. aml-ns. ant-t. arg-n. Ars. atro. calc. camph. carb-v. cench. cocain. Coffin. conv. Crat. crot-c. Crot-h. Dig. Digin.**

- eberth. Elaps elat. gala. Glon. Helo. Hydr-ac. iber. Kali-c. Lach. lat-m. Merc-cy. naja nat-f. nux-m. oxyg. Phase. sacch. saroth. ser-ang. stroph-h. Stry-ar. Stry-s. verat-v. verat. vip.
- CHEST - HEART; complaints of the - accompanied by - Hand - left – swelling **Cact.**
  - CHEST - HEART; complaints of the - accompanied by - rheumatic complaints **Lith-c.**
  - CHEST - HEART; complaints of the - alternating with - rheumatic complaints **benz-ac.**
  - CHEST - HEART; complaints of the - chronic - accompanied by - weakness; general **ars. crat.**
  - CHEST - HEART; complaints of the - rheumatism; after **Acon. Adon. ars. aur. aven. benz-ac. bry. cact. Caust. cimic. colch. crat. dig. gels. ign. kal. Kalm. LACH. led. lith-c. lycps-v. naja nat-m. phyt. prop. puls. rham-cal. Rhus-t. spig. verat-v.**
  - CHEST - HEART; complaints of the - Valves - accompanied by - rheumatic pains **colch. lith-c.**
  - CHEST - HEART; complaints of the **abies-n. ACON. adon. alum. Am-c. am-m. ambr. aml-ns. ammc. anac. anemps. ang. ant-t. apis apoc. arg-met. arg-n. Arn. Ars-i. Ars. asaf. asar. asc-t. aster. aur-ar. aur-br. aur-i. AUR-M. AUR. bacls-7. Bad. Bar-c. bell-p-sp. Bell. benz-ac. bism. borx. bov. Brom. bry. bufo CACT. calc-ar. calc-f. Calc. camph. cann-s. canth. carb-an. carb-v. Caust. Cench. cere-b. cham. chin. Cimic. clem. coc-c. coca cocc. colch. Coll. coloc. con. conv. coron-v. cot. crat. croc. Crot-c. Crot-h. Cupr. cycl. Dig. digin. direc. dros. dulc. Dys. fago. Ferr-n. Ferr-p. ferr. gels. germ-met. glon. graph. grin. hell. hep. Hydr-ac. Hydr. hyos. Iber. Ign. Iod. iodof. ip. jab. kali-bi. kali-c. Kali-chl. kali-m. kali-n. Kalm. kreos. lac-d. LACH. Laur. led. lepi. Lil-t. LITH-C. Lith-f. Lith-i. Lith-m. Lith-met. Lith-p. Lith-s. LOB. Lyc. Lycps-v. m-ambo. m-arct. m-aust. mag-c. mag-m. Mag-n. magn-gr. Mang-act. Mang-m. Mang-n. Mang-p. Mang-s. Mang-sil. mang. meny. merc-c. Merc. mez. morg-g. Mosch. mur-ac. myric. NAJA nat-c. nat-i. Nat-m. nit-ac. Nitro. nux-m. Nux-v. olib-sac. olnd. op. ox-ac. par. petr. ph-ac. phase-xyz. Phase. Phos. phys. phyt. pilo. plat. plb. polyg-pe. pop-cand. prot. prun-p. prun. Psor. PULS. pyrus ran-s. rhod. rhus-t. rumx. ruta sabin. sacch. sars. sec. seneg. Sep. ser-ang. sil. spartin-s. spartin. SPIG. SPONG. squil. staph. stigm. stront-c. stroph-h. Stry. sul-ac. sulph. sumb. tab. tarent. tax. thea thuj. thyr. tub-m. tub. valer. verat-v. Verat. verb. viol-o. viol-t. zinc-i. Zinc-n. Zinc.**
  - CHEST - HEAT - Heart, in region of - extending to – Head **GLON. lachn.**
  - CHEST - HEAT - Heart, in region of - flushes of **ars. cact. carb-v. GLON. lyc. merl. mill. nit-ac. Nux-m. PHOS. plb. sep. sil. Sulph. yohim.**
  - CHEST - HEAT - Heart, in region of **ACON. Ant-t. arg-met. arn. ars. aur. bell. brom. bry. Calc. Cann-s. cann-xyz. canth. carb-v. caust. cic. coc-c. cocc. cot. croc. ferr. GLON. kali-c. lach. lachn. lyc. lycps-v. lyss. m-aust. med. merc. naja nit-ac. nux-v. op. PHOS. plan. Puls. rhod. rhus-t. sabad. Sep. Spig. Spong. sul-i. SULPH. VERAT-V. verat.**
  - CHEST - HYPERTROPHY - Heart; of - numbness and tingling of left arm and fingers; with **ACON. cimic. puls. RHUS-T.**
  - CHEST - HYPERTROPHY - Heart; of - overexertion, from **arn. brom. Calc. Caust. crat. Kali-c. RHUS-T. thyr.**
  - CHEST - HYPERTROPHY - Heart; of **ACON. aethyl-n. Aml-ns. Arn. Ars. aspar. aur-br. AUR-I. Aur-m. AUR. bell. Brom. CACT. Caust. cere-b. chlol. cimic. coffin. Conv. crat. Dig. Ferr. Glon. Graph. Hep. Iber. Iod. kali-bi. KALI-C. KALM. Lach. lil-t. LITH-C. Lyc. Lycps-v. morg-g. Naja Nat-m. nux-v. Phos. phyt. plb. prun-v. prun. Puls. Rhus-t. Spig. SPONG. staph. stroph-h. stry-ar. stry-p. thyr. Verat-v. visc.**
  - CHEST - INFLAMMATION - Heart - Endocardium - accompanied by - Joints; rheumatism of **kalm.**
  - CHEST - INFLAMMATION - Heart - Endocardium - accompanied by - pericarditis – rheumatic **psor. staphycoc. streptoc.**
  - CHEST - INFLAMMATION - Heart - Endocardium - accompanied by – rheumatism **kalm.**
  - CHEST - INFLAMMATION - Heart - endocardium – rheumatic **acon. adon. Ars. Aur-m. AUR. aven. bell. benz-ac. Bry. Cact. Colch. colchin. conv. dig. hir. Hyos. kali-c. kali-i. Kali-n. KALM. LACH. Lith-c. magn-gr. med. nat-i. Phos. phyt. plat. rhus-t. sang. Spig. Spong. Sumb. verat-v. verat. visc.**
  - CHEST - INFLAMMATION - Heart – Endocardium **Abrot. Acet-ac. ACON. adon. ars-i. ARS. aur-i. Aur-m. AUR. bell. bism. Bry. Cact. Calc. carb-v. coc-c. cocc. Colch. conv. dig. diph. ferr. Iod. kali-ar. Kali-c. Kali-i. KALM. Lach. led. magn-gr. Naja nat-m. ox-ac. Phos. phyt. plat. plb. Sep. SPIG. Spong. staphycoc. streptoc. tab. tarent. Verat-v. Zinc-i.**
  - CHEST - INFLAMMATION - Heart - myocardium – rheumatic **beryl. iber. phos.**



- CHEST - INFLAMMATION - Heart - Pericardium - accompanied by – rheumatism franc.
- CHEST - INFLAMMATION - Heart - Pericardium – rheumatic acon. anac. bry. colch. Colchin. crat. kalm. rhus-t. Spig.
- CHEST - INFLAMMATION - Heart - pericardium – rheumatic acon. anac. bry. colch. colchin. crat. franc. Iod. kalm. naja psor. rhus-t. Spig. verat-v.
- CHEST - INFLAMMATION - Heart – Pericardium ACON. adon. anac. ant-ar. Ant-t. Apis apoc. Ars-i. ars-s-f. ARS. Asc-t. aur. bell. Bry. Cact. cann-s. canth. carb-v. chlor. Cimic. Colch. Dig. eberth. franc. Iod. kali-ar. Kali-c. kali-chl. Kali-i. Kalm. Lach. lycps-v. magn-gr. Merc-c. Merc. naja nat-m. ox-ac. phase-xyz. phase. plat. PSOR. seneg. SPIG. Spong. squil. staphycoc. streptoc. SULPH. Verat-v. Verat.
- CHEST - INFLAMMATION – Heart Acon. ant-t. apis ars. asc-t. aur-i. AUR. bism. Brom. Bry. Cact. Cann-s. Carb-v. Carbn-s. Caust. cocc. Colch. crat. Dig. kali-i. Kalm. Lach. Led. mang. merc-c. Naja Phos. plb. Psor. Puls. rheum rhus-t. SPIG. sulph. sumb. Verat-v.
- CHEST – MURMURS tritic-vg.
- CHEST - OPPRESSION – Heart abel. abies-n. Acon. adam. Agar. am-c. Ambr. Aml-ns. anac. ant-t. Apis aran-ix. Ars-i. ARS. arund. aur-ar. aur-i. AUR-M. AUR. bapt. bell. brass-n-o. Brom. bry. bufo CACT. Calc-ar. calc-f. cann-i. cann-s. Carb-v. card-m. Caust. cham. Chin. chlor. cimic. clem. coff. colch. coll. croc. cupr. Dig. dioxi. eup-per. fago. falco-pe. galla-q-r. Gels. Glon. graph. hell. helo. hyos. ignis-alc. Iod. IP. kali-ar. kali-bi. Kali-c. kali-i. kalm. lac-h. Lach. Laur. Lil-t. Lycps-v. mag-m. mand. med. merc-c. merc-i-r. Merc. mez. mosch. Naja Nat-ar. nat-c. Nat-s. nat-sil. Nux-m. Nux-v. ol-j. olib-sac. op. ovi-p. ox-ac. ozone Phos. plb. podo. Prim-vl. PULS. pyrog. ran-b. saroth. sarr. scop. sil. sin-n. SPIG. spong. stict. stram. sumb. Tab. Tarent. ter. thuj. trios. tritic-vg. tub. viol-t. vip. zinc.
- CHEST – OPPRESSION Absin. ACON. act-sp. adam. Aesc. aeth. Agar. agath-a. aids. Ail. All-c. alum-sil. Alum. Alumn. AM-C. Am-caust. Am-m. Ambr. ammc. Anac. androc. Ang. anh. Ant-c. Ant-t. APIS APOC. apom. arag. aran-ix. arg-met. Arg-n. arizon-l. Arn. ARS-I. ars-s-f. ARS. Asaf. asar. asc-t. aspar. aur-ar. aur-i. aur-m. aur-s. AUR. bapt-c. Bapt. bar-c. bar-i. bar-m. bar-s. BELL. benz-ac. berb. bism. Bit-ar. borx. both-ax. Bov. brach. brom. bros-gau. BRY. bufo CACT. cadm-s. cain. Calad. Calc-ar. calc-i. Calc-s. calc-sil. CALC. calen. Camph. cann-i. Cann-s. canth. caps. carb-ac. carb-an. CARB-V. CARBN-S. carc. Carl. caul. Caust. Cedr. Cham. chel. Chin. Chinin-ar. CHININ-S. chlam-tr. chlf. chlol. chlor. Cic. Cimx. Cina cinnb. cit-v. Clem. coc-c. Cocc. Coff. COLCH. Coloc. Con. cop. cor-r. cot. croc. CROT-C. Crot-h. Crot-t. Cupr-ar. Cupr-s. CUPR. Cycl. cypra-eg. cystein-l. Dig. dor. dream-p. Dros. Dulc. Elaps euon. Eup-per. euph. euphr. falco-pe. FERR-AR. ferr-i. ferr-p. FERR. Fl-ac. galeoc-c-h. Galla-q-r. gamb. gard-j. Gels. Glon. gran. Graph. grat. guaj. Ham. hell. Hep. hist. hura hydr-ac. hydrang. hydr. hydrog. hyos. IGN. Iod. IP. jab. jug-c. jug-r. KALI-AR. KALI-BI. kali-br. KALI-C. kali-chl. Kali-i. kali-m. Kali-n. kali-p. Kali-s. kali-sil. Kalm. Kreos. lac-ac. lac-d. Lach. lachn. Lact. lat-m. laur. lavand-a. led. lil-t. limest-b. Lob. Lyc. lyss. m-ambo. m-arct. m-aust. Mag-c. Mag-m. mag-s. Manc. mang. med. medul-os-si. meli. meny. merc-c. merc-i-f. Merc. Mez. mill. moni. mosch. mur-ac. Mygal. Naja nat-ar. nat-c. Nat-m. nat-p. nat-pyru. NAT-S. nat-sil. Nicc. Nit-ac. NUX-M. NUX-V. ol-j. olnd. oncor-t. onos. Op. osm. ox-ac. ozone par. Petr. ph-ac. PHOS. physala-p. Phyt. pieri-b. pin-con. plac. Plat. plb. plut-n. podo. polys. Positr. prot. Prun. Psor. PULS. pyrog. Ran-b. ran-s. raph. rheum rhod. Rhus-t. ribo. ruta sabad. sabin. Samb. Sang. sanic. sars. sec. SEL. SENEG. SEP. Sil. sinus. solid. Spig. Spong. squil. Stann. staph. stict. Stram. stront-c. stry. sul-ac. sul-i. SULPH. sumb. suprar. symph. syph. Tab. tarax. Tarent. teucr. Thuj. til. tritic-vg. TUB. tung-met. valer. vanad. vanil. verat-v. VERAT. verb. vesp. vib. viol-o. viol-t. vip. visc. xan. zinc-p. Zinc.
- CHEST - PAIN - General - heart - alternating with – rheumatism aur-m. Benz-ac. Kalm.
- CHEST - PAIN - General - heart - rheumatic, endocarditis lenta Abrot. acon. am-c. anac. ant-t. apis Arg-n. ars. aur-m. AUR. Benz-ac. bry. Cact. calc. Cimic. cocc. Colch. Crot-h. dig. gels. guaj. Kali-ar. Kali-c. Kalm. Lach. Led. LITH-C. Lycps-v. magn-gr. NAJA phyt. Puls. Rhus-t. sacch-a. Sang. Sep. SPIG. Spong.
- CHEST - PAIN - Heart - Myocardium – rheumatic psor.

- CHEST - PAIN - Heart – rheumatic **Abrot.** acon. am-c. anac. ant-t. apis **Arg-n.** ars. aspar. aur-m. **AUR.** aven. **Benz-ac.** **Cact.** **Cimic.** cocc. **Colch.** **Crot-h.** dig. guaj. **Kali-ar.** **Kali-c.** **Kalm.** **Lach.** **Led.** **LITH-C.** **Lycps-v.** **NAJA** phyt. **Puls.** **Rhus-t.** sacch. **Sang.** **Sep.** **SPIG.** **Spong.**
- CHEST - PAIN - Sides - left - inflammation of the heart; with rheumatic **spig.**
- CHEST - PALPITATION of heart – rheumatic **acon.** **benz-ac.** **bry.** **colch.** **dig.** **kali-s.** **Kalm.** **Lach.** **led.** **lith-c.** **puls.** **rhod.** **rhus-t.** **spig.** **spong.** **verat-v.** **verat.**
- CHEST - PARALYSIS – Heart **acon.** **Ant-t.** **antip.** **ars-i.** **ars.** **Bell.** **Bufo** **cann-i.** **cann-s.** **CARB-V.** **chlol.** **chlor.** **cimic.** **Crot-h.** **Cupr.** **Dig.** **ergot.** **Gels.** **Hydr-ac.** **Iod.** **jatr-u.** **LACH.** **lob-p.** **Merc-cy.** **NAJA OP.** **ox-ac.** **Phos.** **phys.** **Plb.** **sang.** **sumb.** **tub.** **verat-v.** **verat.**
- CHEST - PURRING - Region of heart - noise in; purring **Glou.** **iod.** **pyrog.** **Spig.** **sulph.**
- CHEST - PURRING - Region of heart - sensation of; purring **caust.** **pyrog.** **Spig.**
- CHEST - RHEUMATISM, heart, metastasis to **abrot.** **Acon.** **ars.** **aur.** **benz-ac.** **bry.** **cact.** **Caust.** **cimic.** **Colch.** **ign.** **kalm.** **LACH.** **led.** **lith-c.** **lycps-v.** **naja** phyt. **puls.** **rhus-t.** **spig.** **verat-v.**
- CHEST - SHOCKS - Heart; region of **acon.** **Agar.** **alum.** **ang.** **ant-t.** **arn.** **Aur.** **Bufo** **Calc.** **cann-s.** **CON.** **gels.** **glou.** **Graph.** **hydrog.** **lach.** **Lith-c.** **lyss.** **mang.** **nat-m.** **Nux-v.** **phos.** **phyt.** **Sep.** **Sulph.** **tab.** **Zinc.**
- CHEST - SPASMS of – Heart **act-sp.** **Agar.** **Arg-met.** **calc.** **Cupr.** **Gels.** **Lach.** **mag-p.** **nux-m.** **Nux-v.**
- CHEST - STRAIN - Heart - violent exertion; strain of the heart from **Arn.** **Caust.** **Nat-m.** **Rhus-t.**
- CHEST - WEAKNESS - Heart - About the heart; sensation of weakness **alum-p.** **ambr.** **arg-n.** **Ars-i.** **ars.** **Aur-m.** **Aur.** **bell.** **calc-ar.** **cann-xyz.** **cham.** **cic.** **crat.** **dios.** **gard-j.** **gels.** **Helo-s.** **hyper.** **kali-bi.** **kali-c.** **lach.** **lat-m.** **lil-t.** **lob.** **Merc.** **NAJA** **nat-m.** **NUX-V.** **op.** **petr.** **Ph-ac.** **pyrog.** **RHUS-T.** **sang.** **streptoc.** **sulph.** **sumb.** **tarax.** **thuj.** **zinc.**
- CHEST - WEAKNESS – Heart **abies-c.** **acet-ac.** **acetan.** **acon.** **Adon.** **adonin.** **adren.** **aesc.** **Am-c.** **Am-caust.** **Am-m.** **androc.** **anh.** **ant-ar.** **ant-c.** **Ant-t.** **Arn.** **ars-i.** **ars.** **asper.** **aur-m.** **aur.** **benz-ac.** **brom.** **cact.** **calc-ar.** **Calc.** **Camph.** **carb-ac.** **Carb-v.** **chel.** **chin.** **chinin-ar.** **chlol.** **cocc.** **Colch.** **conv.** **crat.** **croc.** **Crot-h.** **dig.** **dios.** **euon-a.** **euph.** **ferr.** **gala.** **gels.** **glou.** **graph.** **grin.** **Hell.** **helo-s.** **helo.** **Hydr-ac.** **iber.** **kali-ar.** **kali-bi.** **kali-br.** **Kali-c.** **kali-chl.** **kali-cy.** **kali-fcy.** **kali-m.** **kali-n.** **kali-p.** **kali-perm.** **kali-sil.** **kalm.** **kola** **kurch.** **Lach.** **lil-t.** **lob.** **lycps-v.** **merc-sul.** **merc.** **morph.** **mosch.** **naja** **narc-ps.** **nat-m.** **nit-ac.** **nux-m.** **nux-v.** **olnd.** **op.** **parathyr.** **parth.** **petr.** **ph-ac.** **phase.** **Phos.** **phys.** **Phyt.** **plb.** **prun-v.** **prun.** **psor.** **pyrog.** **rhus-t.** **sang.** **sarcoc-ac.** **saroth.** **ser-ang.** **sol** **spartin-s.** **spartin.** **spig.** **squil.** **stroph-h.** **sumb.** **tab.** **thyr.** **Verat.** **vip.** **zinc-i.**
- CIRCULATORY SYSTEM - Heart - Affections – rheumatic **acon.** **aur.** **benz-ac.** **Bry.** **cact.** **caust.** **cimic.** **Colch.** **ign.** **kalm.** **led.** **lith-c.** **lycps-v.** **naja** phyt. **Rhus-t.** **Spig.** **verat-v.**
- CIRCULATORY SYSTEM - Heart - Inflammation – Rheumatic **acon.** **adon.** **bell.** **Bry.** **Colch.** **kali-c.** **kalm.** **rhus-t.** **Spig.**
- CIRCULATORY SYSTEM - Heart - Pain - From – rheumatism **cimic.** **lith-c.**
- CIRCULATORY SYSTEM - Heart - Pericarditis – Rheumatic **acon.** **anac.** **bry.** **colch.** **Colchin.** **crat.** **kalm.** **rhus-t.** **Spig.**
- Clinical - angina, pectoris - rheumatism, from **cimic.** **lith-c.**
- Clinical - emaciation, general - heart, disease - rheumatic disease **Cact.**
- Clinical - endocarditis, heart, inflammation - mitral valve, with insufficiency of, after acute articular rheumatism **spig.**
- Clinical - endocarditis, heart, inflammation – rheumatic **acon.** **adon.** **Ars.** **Aur-m.** **Aur.** **aven.** **bell.** **benz-ac.** **Bry.** **Cact.** **Colch.** **colchin.** **conv.** **dig.** **hir.** **Hyos.** **kali-c.** **kali-i.** **Kali-n.** **Kalm.** **Lach.** **Lith-c.** **magn-gr.** **med.** **nat-i.** **Phos.** **phyt.** **plat.** **rhus-t.** **sang.** **Spig.** **Spong.** **Sumb.** **verat-v.** **verat.** **visc.**
- Clinical - myocarditis, heart, inflammation – rheumatic **beryl.** **iber.** **phos.**
- Clinical - pericarditis, heart, inflammation – rheumatic **acon.** **anac.** **bry.** **colch.** **colchin.** **crat.** **franc.** **Iod.** **kalm.** **naja** **psor.** **rhus-t.** **Spig.** **verat-v.**
- Clinical - rheumatism, general - alternating, with - heart problem **kalm.**
- Clinical - rheumatism, general - alternating, with - pain in heart **benz-ac.**
- Clinical - rheumatism, general - fingers, especially in, pains suddenly go to heart, urine dark red **nat-s.**
- Clinical - rheumatism, general - heart disease, with - acute heart disease, after **Colch.**
- Clinical - rheumatism, general - heart disease, with - alternating with heart disease **Kalm.**

- Clinical - rheumatism, general - heart disease, with - erratic pains, attacking the heart **aur.**
- Clinical - rheumatism, general - heart disease, with - pain in heart, with **Cact.**
- Clinical - rheumatism, general - heart disease, with - pains suddenly leave and go to heart **Kalm.**
- Clinical - rheumatism, general - heart disease, with - pericardium or heart, are affected **merl.**
- Clinical - rheumatism, general - heart disease, with **Cact. Colch. coll. Kali-c. Kalm.**
- Clinical - rheumatism, general - suppressed, heart symptoms from **Kalm.**
- DELUSIONS - die - about to die; one was - heart trouble; in - rheumatism; with **Cact.**
- EXPECTORATION - BLOODY - heart complaints; in **aur-i.**
- EXTREMITIES - NUMBNESS - Upper limbs - right - heart disease; in **lil-t.**
- EXTREMITIES - PAIN - Fingers - Joints - rheumatic - goes to heart **nat-p.**
- EXTREMITIES - PAIN - rheumatic - alternating with - pain in – heart **benz-ac. nat-p.**
- EXTREMITIES - PAIN - rheumatic - upper limbs - hands - joints - extending to heart **nat-p.**
- EXTREMITIES - SWELLING - Fingers - left - heart disease; in **lycps-v.**
- EXTREMITIES - SWELLING - Upper limbs - heart disease; in **lycps-v.**
- EXTREMITIES - WEAKNESS - Forearms - heart disease; in **dig.**
- EXTREMITY PAIN - GENERAL - rheumatic - alternating with - pain in – heart **benz-ac. nat-p.**
- EXTREMITY PAIN - UPPER LIMBS - Fingers - joints - rheumatic - goes to heart **nat-p.**
- FACE - DISCOLORATION - bluish - heart trouble **Apis aur. Cact. laur.**
- FACE - DISCOLORATION - red - circumscribed - heart disease; with **aur-m.**
- FACE - DISCOLORATION - red - heart, with shocks at **phos.**
- FEVER, HEAT - RHEUMATIC fever - overheated, after being, with arising heart complaints **kali-chl. spong.**
- Fevers - RHEUMATIC, fever - heart, leaves joints and attacks **Aur-m.**
- Fevers - RHEUMATIC, fever - overheated, after being, with arising heart complaints **kali-chl. spong.**
- GENERALITIES - PULSE - slow, brachycardia - rheumatism of heart, during threatening **dig.**
- GENERALITIES - PULSE - strong - threatening rheumatism of heart, during **dig.**
- GENERALS - FAINTNESS - Heart - disease; in **Arn. Ars. Cact. Chel. Dig. Kali-p. lach. Lina. lycps-v. naja Spig.**
- GENERALS - FAINTNESS - Heart - pressure about; with **cimic. Manc. petr. plb.**
- GENERALS - FAINTNESS - Heart - weakness of heart, from **am-c. ars. conv. crat. dig. hydr-ac. lach. laur. verat.**
- Generals - RHEUMATIC, pain - alternating, with - pain in heart **benz-ac.**
- Hands - RHEUMATIC, pain, hands - fingers, joints - goes to heart **nat-p.**
- HEAD - CONGESTION - alternating with - Heart; congestion to **Glon.**
- HEAD - HEAT - heart - oppression of heart; during **glon.**
- HEAD - PAIN - heart complaints; with **ars-i. lach. lycps-v. symph.**
- Heart - ANGINA, pectoris - rheumatism, from **cimic. lith-c.**
- Heart - ANXIETY, heart region , in - rheumatic, complaints, in **kalm. Lach.**
- Heart - ANXIETY, heart region , in - rheumatism, of heart, in **Kalm. lach.**
- Heart - CONSTRICTION, sensation - acute, rheumatism, in **Asaf. cact.**
- Heart - DILATATION, heart - rheumatism, from **Ant-t.**
- Heart - ENDOCARDITIS, heart, inflammation - mitral valve, with insufficiency of, after acute articular rheumatism **spig.**
- Heart - ENDOCARDITIS, heart, inflammation – rheumatic **acon. adon. Ars. Aur-m. AUR. aven. bell. benz-ac. Bry. Cact. Colch. colchin. conv. dig. hir. Hyos. kali-c. kali-i. Kali-n. KALM. LACH. Lith-c. magn-gr. med. nat-i. Phos. phyt. plat. rhus-t. sang. Spig. Spong. Sumb. verat-v. verat. visc.**
- Heart - HEARTBEATS, general - rapid - rheumatic carditis, in **spig.**
- Heart - HEARTBEATS, general - tremulous, heart affections in - idiopathic and rheumatic endocarditis and pericarditis, in **verat-v.**
- Heart - HEARTBEATS, general - turbulent, for a short time, in cardiac rheumatism **Cact.**
- Heart - HEARTBEATS, general - violent - idiopathic and rheumatic endocarditis and pericarditis, in **verat-v.**

- Heart - HYPERTROPHY, heart - rheumatic, endocarditis, from **KALM.**
- Heart - INFLAMMATION, heart - rheumatic, with severe pains in apex down to arms and finger tips **cact.**
- Heart - INFLAMMATION, heart - sympathetic irritation and cough, with, rheumatic **naja**
- Heart - MITRAL, valve, general - endocarditis, acute articular rheumatism, with **spig.**
- Heart - MITRAL, valve, general - rheumatic fever, with chronic, pain worse by moving, but afterwards better from movement **sulph.**
- Heart - MITRAL, valve, general - rheumatism, after **Coll. KALM. Spong.**
- Heart - MYOCARDITIS, heart, inflammation – rheumatic **beryl. iber. phos.**
- Heart - PAIN, heart - alternating, with – rheumatism **aur-m. Benz-ac. Kalm.**
- Heart - PAIN, heart - rheumatic, endocarditis **Abrot. acon. am-c. anac. ant-t. apis Arg-n. ars. aur-m. AUR. Benz-ac. bry. Cact. calc. Cimic. cocc. Colch. Crot-h. dig. gels. guaj. Kali-ar. Kali-c. Kalm. Lach. Led. LITH-C. Lycps-v. magn-gr. NAJA phyt. Puls. Rhus-t. sacch-a. Sang. Sep. SPIG. Spong.**
- Heart - PALPITATIONS, general – rheumatic **dig.**
- Heart - PERICARDITIS, heart, inflammation – rheumatic **acon. anac. bry. colch. colchin. crat. franc. Iod. kalm. naja psor. rhus-t. Spig. verat-v.**
- Heart - RHEUMATIC, pains in heart **Abrot. acon. am-c. anac. ant-t. apis Arg-n. ars. aur-m. AUR. Benz-ac. Cact. Cimic. cocc. Colch. Crot-h. dig. gels. guaj. Kali-ar. Kali-c. KALM. Lach. Led. LITH-C. Lycps-v. NAJA phyt. Puls. Rhus-t. sacch-a. Sang. Sep. SPIG. Spong.**
- Heart - rheumatism, after **adon. aur. benz-ac. gels. kalm. Lach. spig.**
- Heart - RHEUMATISM, heart complaints, with - after heart complaints **adon.**
- Heart - RHEUMATISM, heart complaints, with - disease, heart, after gout or acute rheumatism **Colch.**
- Heart - RHEUMATISM, heart complaints, with - disease, heart, after gout or acute rheumatism - after frequent attacks of rheumatism, or alternating with it **KALM.**
- Heart - RHEUMATISM, heart complaints, with **abrot. Acon. ars. aur. Benz-ac. bry. CACT. Caust. cimic. Colch. ign. Kali-c. KALM. LACH. led. LITH-C. lycps-v. naja phyt. puls. RHUS-T. SPIG. verat-v.**
- Heart - SHARP, pain, stitching, heart - rheumatism, in acute, each attack **lac-c.**
- Heart - SORE, pain, bruised, heart - rheumatism, in cardiac **Cact.**
- Heart - SPASMODIC, pain - rheumatism, in **Lach.**
- Heart - VALVULAR, heart disease - endocarditis, after repeated, affecting right ventricle, which gradually becomes dilated - rheumatic, after **KALM.**
- Heart - VALVULAR, heart disease - thickening, after rheumatism **KALM.**
- HEART & CIRCULATION - ANGINA pectoris, stenocardia - rheumatism, from **cimic. lith-c.**
- HEART & CIRCULATION - ANXIETY, region of heart - rheumatic complaints, in **LACH.**
- HEART & CIRCULATION - INFLAMMATION - heart, carditis - pericardium, pericarditis – rheumatic **acon. anac. bry. colch. colchin. crat. franc. IOD. kalm. naja psor. rhus-t. SPIG. verat-v.**
- HEART & CIRCULATION - NOISES - murmurs - valves of heart - rheumatism and uric acid diathesis **lith-c. spig.**
- HEART & CIRCULATION - PAIN - heart - alternating with – rheumatism **aur-m. BENZ-AC. KALM.**
- HEART & CIRCULATION - PAIN - rheumatic, heart, endocarditis lenta **ABROT. acon. am-c. anac. ant-t. apis ARG-N. ars. aur-m. AUR. BENZ-AC. bry. CACT. calc. CIMIC. cocc. COLCH. CROT-H. dig. gels. guaj. KALI-AR. KALI-C. KALM. LACH. LED. LITH-C. LYCPS-V. magn-gr. NAJA phyt. PULS. RHUS-T. sacch-a. SANG. sarcol-ac. SEP. SPIG. SPONG.**
- HEART & CIRCULATION - PALPITATION heart – rheumatic **dig.**
- HEART & CIRCULATION - PULSE - slow, brachycardia - rheumatism of heart, during threatening **dig.**
- HEART & CIRCULATION - PULSE - strong - threatening rheumatism of heart, during **dig.**
- HEART & CIRCULATION - RHEUMATISM, heart, metastasis to **abrot. ACON. adon. ars. aur. benz-ac. BRY. cact. CAUST. cimic. COLCH. ign. KALM. LACH. lith-c. lycps-v. magn-gr. naja phyt. puls. RHUS-T. SPIG. verat-v.**
- Joints - RHEUMATIC, fever - heart, leaves joints and attacks **Aur-m.**
- Joints - RHEUMATIC, fever - overheated, after being, with arising heart complaints **kali-chl. spong.**

- Joints - RHEUMATISM, general - alternating, with - heart problem Joints - RHEUMATISM, general - alternating, with - pain in heart **benz-ac.**
- Joints - RHEUMATISM, general - fingers, especially in, pains suddenly go to heart, urine dark red **nat-s.**
- Joints - RHEUMATISM, general - heart disease, with - acute heart disease, after **Colch.**
- Joints - RHEUMATISM, general - heart disease, with - alternating with heart disease **KALM.**
- Joints - RHEUMATISM, general - heart disease, with - erratic pains, attacking the heart **aur.**
- Joints - RHEUMATISM, general - heart disease, with - pain in heart, with **Cact.**
- Joints - RHEUMATISM, general - heart disease, with - pains suddenly leave and go to heart **Kalm.**
- Joints - RHEUMATISM, general - heart disease, with - pericardium or heart, are affected **merl.**
- Joints - RHEUMATISM, general - heart disease, with **Cact. Colch. coll. Kali-c. KALM.**
- Joints - RHEUMATISM, general - suppressed, heart symptoms from **Kalm.**
- LARYNX AND TRACHEA - VOICE - lost - heart complaints **ox-ac.**
- LARYNX AND TRACHEA - VOICE - lost - nervous aphonia - accompanied by - Heart; complaints of the **coca hydr-ac. nux-m. ox-ac.**
- Limbs - RHEUMATIC, pain - alternating, with - pain in heart **benz-ac.**
- LOCOMOTOR SYSTEM - Rheumatism - Concomitants - Metastases - to heart **adon. aven. cact. Kalm. lith-c. prop. Spig.**
- MIND - ANXIETY - chest, in - heart, region of - rheumatic complaints, in **LACH.**
- MIND - ANXIETY - congestion - heart; to **nit-ac.**
- MIND - ANXIETY - heart failure; in congestive **CARB-V.**
- MIND - ANXIETY - heart; about his **maias-l. ol-an. phos. samb. stroph-xyz.**
- MIND - DEATH - presentiment of - fear, without - rheumatism of heart, in **CACT.**
- MIND - DELUSIONS - heart - disease - going to have a heart disease and die; is **arn. germ-met. Kali-ar. lac-c. lach. podo.**
- MIND - DELUSIONS - heart - disease - having an **arn. calc. germ-met. graph. Kali-ar. Lac-c. lach. Nat-c. podo.**
- Mind - DELUSIONS, general, hallucinations, visions - die, thought he was about to - heart, trouble with rheumatism, in **Cact.**
- MIND - FEAR - death, of - heart symptoms, during **ACON. Ang. Arn. asaf. cact. carb-v. cench. DIG. germ-met. gink-b. Naja Plat. Psor.**
- MIND - FEAR - heart - disease of the heart **acon. aml-ns. Apis arg-n. arn. ars-met. ars. astat. aur-m. aur-s. Aur. bapt. bar-br. bar-i. bar-met. bism-sn. both-a. cact. caes-met. calc-n. calc-p. calc-s. Calc. cassia-s. caust. cinnb. coca cupr-act. cupr-f. cupr-m. cupr-p. cupr. daph. dig. ferr-n. fum. GELS. germ-met. hafn-met. hed. hydrog. irid-met. Kali-ar. lac-c. lac-cp. lach. lanth-met. Lil-t. lob. mag-n. mang-n. meny. merc-d. merc-i-f. merc. mez. nat-ar. nat-m. nitro. nux-m. osm-met. Phos. plac. plat. plb-m. plb-p. plb. podo. polon-met. psor. rhen-met. rhus-t. ruta sars. sin-n. Spong. tant-met. tarent. thal-met. tritic-vg. tung-met. vib. zinc-n.**
- MIND - RESTLESSNESS - night - heart; from uneasiness about **phys.**
- Pulse - FAST, pulse, elevated, exalted - heart, affection, in, 160 - rheumatism of, in, 105 **Cact.**
- Pulse - THREADY, pulse - heart disease, in - beating, not, but like a thread quickly pulled through artery, in cardiac rheumatism **spig.**
- Pulse - THREADY, pulse - heart disease, in - carditis, in, and cardiac rheumatism **Cact.**
- Pulse - WEAK, pulse - heart disease, in - cardiac rheumatism, in **Cact. spig.**
- RESPIRATION - ASTHMATIC - heart - complaints; from heart **adon. Aspidin. aur. cact. chinin-ar. digin. grin. kali-n. laur. naja psor. queb. spong. stroph-h. sumb.**
- RESPIRATION - ASTHMATIC - heart - fatty degeneration of heart; from **ARN.**
- RESPIRATION - DIFFICULT - rheumatic - Heart; of **Abrot. adon. aur. Cact. cimic. Kalm. Psor. sep. Spong.**
- RESPIRATION - DIFFICULT - rheumatism, with - heart, of **ABROT. aur. CACT. cimic. KALM. PSOR. sep. SPONG.**
- RESPIRATION - GASPING - heart complaints; in **laur.**
- STOMACH - DISORDERED - heart failure, with **crat.**
- STOMACH - EMPTINESS - heart; with weak or dilated **chlol.**

- STOMACH - SINKING - extending to – Heart **LOB.**
- STOMACH - SINKING - heart symptoms, in **lepi.**

Top ten Homoeopathic Remedies in decreasing order of importance-

**kalm. > cact. > lach. > spig. > aur. > colch. > acon. > ars. > rhus-t. > dig.**

### **Bibliography**

1. Current\_Cardiology.2ed.with\_images
2. Cardiopulmonary and Clinical Terminology
3. Valvular Heart Diseases.ppt
4. Critical\_Pathways\_in\_Cardiology.2001
5. Braunwald-Heart\_Disease-A\_Textbook\_of\_Cardiovascular\_Med
6. Pocket Atlas of Echocardiography
7. Washington\_Manual\_of\_Diagnosis\_and\_Therapy.30ed
8. Complementary and Alternative Cardiovascular Medicine
9. Musculoskeletal.Diseases
10. Current Diagnosis and Treatment in Family Practice 2007
11. Harrison's Principles of Internal Medicine 17<sup>th</sup> Edition
12. RADAR 10
13. A Comparision of chronic Miasms- P. Speight