



POLYCYTHEMIA VERA AND HOMOEOPATHY

Dr. Rajneesh Kumar Sharma MD (Homoeopathy)



Polycythemia Vera and Homoeopathy

© Dr. Rajneesh Kumar Sharma M.D. (Homoeopathy)
Homoeo Cure & Research Institute
NH 74, Moradabad Road, Kashipur (Uttaranchal) INDIA
Pin- 244713 Ph. 05947- 260327, 9897618594
E. mail- drrajneeshom@hotmail.com
www.treatmenthomeopathy.com
www.cureme.org.in



Contents

Etymology	2
Definition	2
Incidence.....	2
Causes	2
Pathophysiology.....	3
Signs and Symptoms.....	3
Nonspecific symptoms	3
Less common symptoms	4
Symptoms secondary to reduced blood flow	4
Symptoms of complications.....	4
Specific symptoms.....	4
Diagnosis.....	5
Major Criteria	6
Minor Criteria.....	6
Differential diagnosis	6
Secondary polycythemia	6
Primary myelofibrosis.....	6
Essential thrombocythemia (ET)	6
Chronic myelogenous leukemia	6
Treatment	7
Management	7
Homoeopathic treatment	7
Common Homoeopathic remedies for Polycythemia vera	7
Repertory of Polycythemia vera	0
Bibliography	9

Polycythemia vera is a form of myeloproliferative disorder. Myeloproliferative disorders (MPD) are reclassified by WHO, from MPDs to myeloproliferative neoplasms (MPNs) as these diseases are blood cancers. This group of disorders is characterized by proliferation of one or more of the three main blood cell lines - red or white blood cells or platelets. These MPNs are commonly classified as-

- Polycythemia vera
- Chronic myeloid leukemia
- Essential thrombocythemia and
- Idiopathic myelofibrosis

Etymology

- Cryptogenic polycythemia
- Erythremia
- Erythrocytosis megalosplenica
- Myelopathic polycythemia
- Myeloproliferative disorder
- Osler's disease
- Osler-Vaquez disease
- Polycythemia rubra vera
- Polycythemia with chronic cyanosis
- Primary polycythemia
- Splenomegalic polycythemia
- Vaquez-Osler disease
- Vaquez's disease

Definition

Polycythemia vera is a rare, chronic, progressive myeloproliferative neoplasm (MPN) (Psora/ Sycosis/ Syphilis) primarily characterized by an overproduction of the red blood cells (Psora/ Sycosis) in the bone marrow called as myeloproliferation as well as the overproduction of white blood cells and platelets (Psora/ Sycosis) in most cases.

Incidence

- Men are more affected than women
- Approximately 2 people per 100,000
- It occurs most often in elderly, but can affect individuals of any age
- Extremely rare in individuals under 20

Causes

Polycythemia vera is caused by a malignant change in DNA (Psora/ Sycosis/ Syphilis), a mutation of the JAK2 gene. The exact mechanism in this development is unknown.

The original defect is in the hematopoietic stem cell in the bone marrow of individuals with polycythemia vera. A change in the DNA of a single hematopoietic stem cell causes the abnormal cell to continually reproduce itself eventually becoming the predominant hematopoietic stem cell in the bone marrow (Psora/ Sycosis/ Syphilis).

There may be some genetic factors in addition to a JAK2 gene mutation (Syphilis) which may play a role in the development of the disorder.

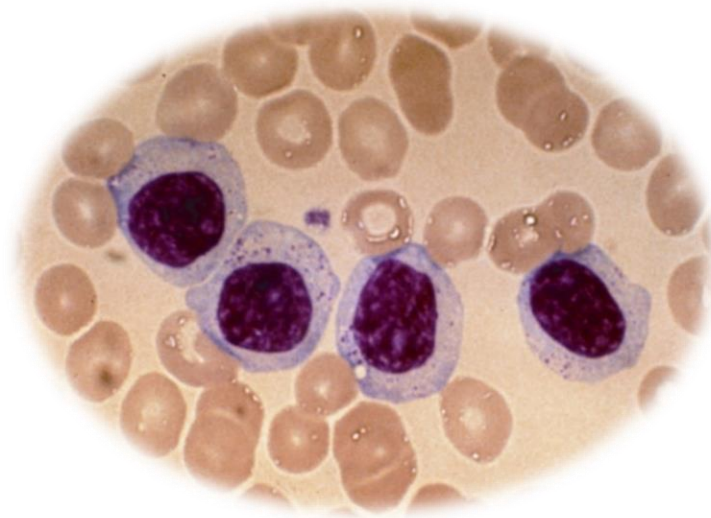
Secondary causes of increased red blood cell mass (e.g., heavy smoking, chronic pulmonary disease, renal disease) are more common than polycythemia vera and must be excluded (Causa occasionalis).

Pathophysiology

Since red blood cells are overproduced in the marrow, this leads to abnormally high red blood mass within the blood. Consequently, the blood thickens and increases in volume, the condition called hyperviscosity (Psora). Thickened blood may not flow through smaller blood vessels properly (Causa occasionalis).

There is a great risk of blood clot formation (Psora/ Sycosis), which may prevent blood flow to vital organs. More than 90 percent of individuals with polycythemia vera have a mutation of the JAK2 gene. The exact role that this mutation plays in the development of polycythemia vera is not yet known.

Hyperhomocystinemia (Psora/ Sycosis) is a risk factor for thrombosis and is also widely prevalent in patients with MPD (35% in controls, 56% in persons with PV).



Signs and Symptoms

The symptoms of polycythemia vera typically develop gradually over many years. It often has vague symptoms and incidentally diagnosed by blood test done for other reasons.

Nonspecific symptoms

- Headaches (Psora)
- Fatigue (Psora/ Syphilis)
- Weakness (Psora/ Syphilis)
- Dizziness (Psora)
- Excessive sweating especially at night (Psora/ Syphilis)
- Itchy skin worse after taking a shower or a warm bath due to increased histamine levels released from increased basophils and mast cells and can be exacerbated by a warm bath or shower (Psora)
- Blurred vision (Psora)
- Tinnitus (Psora)
- Abnormal redness of the skin especially on the face (Psora)

- Splenomegaly (Psora)

Less common symptoms

- Tendency to bruise easily (Psora)
- Frequent epistaxis (Psora/ Syphilis)
- Bleeding from the gums (Psora/ Syphilis)
- Hepatomegaly (Psora)
- Erythromelalgia, characterized by a reddened or purplish appearance to the skin of the hands and feet, causing a painful, burning sensation or swelling of the affected areas (Psora)
- Warm skin (Psora)



Symptoms secondary to reduced blood flow

These develop due to the thickening of the blood, the hyperviscosity and abnormalities affecting the platelets, which can increase risk of developing blood clots. (Causa occasionalis)

Symptoms of complications

These occur due to thrombotic events and, in rare cases, can be the first obvious sign of polycythemia vera. (Causa occasionalis)

Specific symptoms

These depend upon where a blood clot forms-

- Angina (Psora)
- Budd-Chiari syndrome, in which hepatic vein thrombosis occurs (Psora/ Sycosis)
- CVA (Psora)
- Deep vein thrombosis (DVT) (Psora/ Sycosis)
- Gout (Psora/ Syphilis)
- Heart attack (Psora)
- Kidney stones (Psora)
- Peptic ulcers (Psora/ Syphilis)

- Pulmonary embolism (Psora/ Sycosis)

Gout and kidney stone associated with polycythemia vera occur due to the high turnover of red blood cells, which results in higher-than-normal uric acid production.

- Sometimes, regression of polycythemia vera may lead to scarring of the marrow and the disorder resembles idiopathic myelofibrosis. This may also be referred to as the spent phase of polycythemia vera. Now the marrow fails resulting in anemia, thrombocytopenia and leukopenia. (Psora/ Sycosis/ Syphilis)
- In rare cases, polycythemia vera may eventually progress into a form of leukemia known as acute myeloid leukemia. (Psora/ Sycosis/ Syphilis)

Diagnosis

A very careful and complete evaluation of patient is needed to diagnose PV. This includes-

- Clinical evaluation and detailed patient history
- Erythropoietin (EPO) levels are abnormally low
- Bone marrow biopsy
 - Moderate to marked hypercellularity
 - Trilineage hyperplasia
 - Megakaryocytes increased; hyperlobulated
 - Dilated sinusoids with intravascular hematopoiesis
 - Decreased or absent iron stores
 - Increased reticulin (only in a minority of patients)
- Karyotype study for JAK2 mutation in blood cells

Peripheral blood findings

- Increased hemoglobin & hematocrit
- Normal red blood cell morphology, unless iron deficient or spent phase
- Normoblasts may be present
- Mild to moderate leukocytosis
- Mild neutrophilia and/or basophilia
- Thrombocytosis

This disease may also alter the results of the following tests-

- Erythropoietin- low
- ESR- raised
- Hemoglobin- increased
- Hyperhomocystinemia
- Lactate dehydrogenase- raised
- Leukocyte alkaline phosphatase- increased
- Platelet aggregation test- positive
- RBC count- raised
- Serum uric acid- raised
- T- WBC- raised

Diagnosis is made using criteria developed by the 'Polycythemia Vera Study Group'. Confirmation of polycythemia vera is done when a patient fulfills all three of the major criteria or any two major and any two minor criteria.

Major Criteria

- Total RBC vol
 - Men > or = to 36 mL/kg
 - Women > or = to 32 mL/kg
- Arterial O² saturation > or = to 92%
- Splenomegaly

Minor Criteria

- Thrombocytosis with platelet count > 400,000/mL
- Leukocytosis with WBC > 12,000/mL
- Increased leukocyte alkaline phosphatase LAP > 100U/L (no infection)
- Serum B12 > 900 pg/mL or binding capacity UB12 BC > 2200 pg/mL

Differential diagnosis

Secondary polycythemia

It is a general term for the overproduction of red blood cells that occurs secondary to a known cause, like genetic disorders, certain tumors that may secrete erythropoietin, conditions that deprive the body of oxygen such as certain lung or heart diseases, high altitudes etc. Certain kidney disorders can result in the excessive production of erythropoietin and, in turn, overproduction of red blood cells.

Primary myelofibrosis

It is a rare bone marrow disorder that is characterized by abnormalities in hematopoiesis and scarring within the bone marrow. In primary myelofibrosis, a change in the DNA of a single hematopoietic stem cell causes the abnormal cell to continually reproduce itself. Eventually, these abnormal cells crowd out normal, healthy cells in the marrow and, along with scarring within the marrow, disrupt the production of red and white blood cells and platelets. The symptoms associated with primary myelofibrosis vary and are related to the abnormalities affecting blood cell production. Eventually, affected individuals may develop fatigue, fever, frequent infections, pale skin, night sweats and unexplained weight loss. Splenomegaly and hepatomegaly may also occur.

Essential thrombocythemia (ET)

It is characterized by overproduction of the megakaryocytes leading to increased platelets in the blood. The symptoms and signs of ET may include splenomegaly, bleeding from the gut, gums and nose, and constricted or thrombosed arteries. Clots may occur in the small arteries of the toes and fingers, leading to pain, warmth, gangrene and classic erythromelalgia. This chronic disorder may be progressive, evolving in relatively rare cases into acute leukemia or myelofibrosis.

Chronic myelogenous leukemia

It is a rare myeloproliferative neoplasm characterized by the excessive development of white blood cells in the bone marrow, spleen, liver and blood. As the disease progresses, the leukemic cells invade other areas of the body including the intestinal tract, kidneys, lungs, gonads and lymph nodes. In first or chronic phase, there is slow, progressive overproduction of white blood cells. In advanced or acute phase, there is blast crisis. Now, more than 50 percent of the cells in the bone marrow are immature malignant cells like blast cells or promyelocytes.

Treatment

Management

The treatment of polycythemia vera is designed to reduce the levels of red blood cells and preventing the complications by thrombosis.

Most individuals with polycythemia vera need their blood drawn usually at regular intervals over several months.

Individuals who enter the spent phase of polycythemia vera, may require periodic blood transfusions to maintain sufficient levels of blood cells.

Homoeopathic treatment

Common Homoeopathic remedies for Polycythemia vera

Aconite

- ABDOMEN- DROPSY- ascites
- CHEST- ANGINA pectoris
- CHEST- HEMORRHAGE of lungs
- CHEST -INFLAMMATION- Bronchial tubes
- CHEST- PALPITATION of heart
- EXPECTORATION- BLOODY
- EXTREMITIES- FORMICATION
- EXTREMITIES- MILK LEG
- EXTREMITIES- NUMBNESS- Lower limbs
- EXTREMITIES- NUMBNESS- Upper limbs
- EXTREMITIES-PARALYSIS- hemiplegia
- FACE- DISCOLORATION- red- bluish red
- FACE- DISCOLORATION- red- glowing red
- FACE -HEAT- flushes
- GENERALS- DISTENSION blood vessels
- GENERALS- FORMICATION- External parts
- GENERALS- HEAT- flushes of
- GENERALS -INFLAMMATION- Blood vessels
- GENERALS- WEAKNESS
- HEAD -CEREBRAL HEMORRHAGE
- HEAD -PAIN -pressing pain
- LARYNX AND TRACHEA - INFLAMMATION- Larynx
- MIND -INDIFFERENCE- everything, to
- NOSE- EPISTAXIS
- RESPIRATION-DIFFICULT
- RESPIRATION-DIFFICULT- palpitations; during
- SKIN- FORMICATION

- SLEEP- SLEEPINESS
- STOMACH -APPETITE -wanting
- STOMACH- FULLNESS, sensation of
- STOMACH- NAUSEA
- VISION- COLORS before the eyes- black- spots
- VISION- LOSS OF VISION

Apis mel

- ABDOMEN -DROPSY- ascites
- CHEST- ANGINA pectoris
- CHEST -INFLAMMATION- Bronchial tubes
- CHEST -PALPITATION of heart
- EXPECTORATION- BLOODY
- EXTREMITIES- MILK LEG
- EXTREMITIES- NUMBNESS- Lower limbs
- EXTREMITIES- NUMBNESS- Upper limbs
- EXTREMITIES- PARALYSIS- apoplexy; after
- EXTREMITIES- THROMBOSIS- Lower limbs
- EXTREMITIES-PARALYSIS- hemiplegia
- EYE -INJECTED- Conjunctiva- dark vessels; full of
- FACE- DISCOLORATION- red- bluish red
- FACE- DISCOLORATION- red- glowing red
- FACE- DISCOLORATION- red- Lips
- FACE- HEAT- flushes
- GENERALS -FORMICATION -External parts
- GENERALS -HEAT- flushes of
- GENERALS -INFLAMMATION -Blood vessels
- GENERALS- THROMBOSIS

- GENERALS- WEAKNESS
- HEAD- PAIN- pressing pain
- LARYNX AND TRACHEA-INFLAMMATION -Larynx
- MIND -INDIFFERENCE -everything, to
- NOSE-EPISTAXIS
- RESPIRATION-DIFFICULT
- SKIN -FORMICATION
- SLEEP- SLEEPINESS
- STOMACH- APPETITE- wanting
- STOMACH- FULLNESS, sensation of
- STOMACH- NAUSEA
- VISION -LOSS OF VISION

Argentum nit

- ABDOMEN ·ULCERS
- ABDOMEN· DROPSY· ascites
- CHEST- ANGINA pectoris
- CHEST- HEMORRHAGE of lungs
- CHEST· PALPITATION of heart
- EAR- NOISES in- buzzing- vertigo; with
- EXPECTORATION- BLOODY
- EXTREMITIES- FORMICATION
- EXTREMITIES- NUMBNESS -Lower limbs
- EXTREMITIES- NUMBNESS- Upper limbs
- EXTREMITIES-PARALYSIS- hemiplegia
- EYE -INJECTED -Conjunctiva -dark vessels; full of
- FACE· DISCOLORATION· red·glowing red
- GENERALS- DISTENSION blood vessels
- GENERALS- FORMICATION- External parts
- GENERALS -HEAT- flushes of
- GENERALS- WEAKNESS
- HEAD -CEREBRAL HEMORRHAGE
- HEAD -PAIN -pressing pain
- LARYNX AND TRACHEA - INFLAMMATION -larynx
- MIND -INDIFFERENCE- everything, to
- NOSE- EPISTAXIS
- RESPIRATION-DIFFICULT
- SLEEP- SLEEPINESS
- STOMACH -APPETITE -wanting
- STOMACH· FULLNESS, sensation of
- STOMACH· NAUSEA

- VISION- COLORS before the eyes- black- spots
- VISION -LOSS OF VISION

Arnica mont

- CHEST- ANGINA pectoris
- CHEST- HEMORRHAGE of lungs
- CHEST -INFLAMMATION- Bronchial tubes
- CHEST- PALPITATION of heart
- EAR- NOISES in- buzzing- vertigo; with
- EXPECTORATION- BLOODY
- EXTREMITIES- MILK LEG
- EXTREMITIES- NUMBNESS- Lower limbs
- EXTREMITIES- VARICES- Legs- inflamed
- EXTREMITIES-PARALYSIS- hemiplegia
- FACE- DISCOLORATION- red- glowing red
- GENERALS- WEAKNESS
- GENERALS- DISTENSION blood vessels
- GENERALS- FORMICATION- External parts
- GENERALS -HEAT- flushes of
- GENERALS -INFLAMMATION- Blood vessels
- GENERALS- THROMBOSIS
- HEAD -CEREBRAL HEMORRHAGE
- HEAD -PAIN -pressing pain
- LARYNX AND TRACHEA - INFLAMMATION- Larynx
- MIND - INDIFFERENCE - everything, to
- NOSE- EPISTAXIS
- RESPIRATION-DIFFICULT
- SKIN - PURPURA - hemorrhagica
- SLEEP- SLEEPINESS
- STOMACH- APPETITE- wanting
- STOMACH- FULLNESS, sensation of
- STOMACH- NAUSEA
- VISION- LOSS OF VISION

Arsenicum alb

- ABDOMEN - DROPSY - ascites
- ABDOMEN - ENLARGED - Spleen
- ABDOMEN -ENLARGED -Liver
- ABDOMEN- ULCERS
- CHEST -ANGINA pectoris
- CHEST- HEMORRHAGE of lungs
- CHEST -INFLAMMATION- Bronchial tubes

- CHEST- PALPITATION of heart
- EAR- NOISES in- buzzing- vertigo; with
- EXPECTORATION -BLOODY
- EXTREMITIES- FORMICATION
- EXTREMITIES- MILK LEG
- EXTREMITIES- NUMBNESS- Lower limbs
- EXTREMITIES- NUMBNESS- Upper limbs
- EXTREMITIES- VARICES- Legs- inflamed
- EXTREMITIES- PARALYSIS- hemiplegia
- EYE -INJECTED- Conjunctiva- dark vessels; full of
- FACE- DISCOLORATION- red- bluish red
- FACE -HEAT- flushes
- FACE-DISCOLORATION -red- Lips
- FACE-DISCOLORATION -red- Mouth- Corners of
- GENERALS - FORMICATION -External parts
- GENERALS - INFLAMMATION -Blood vessels
- GENERALS- DISTENSION blood vessels
- GENERALS -HEAT- flushes of
- GENERALS- THROMBOSIS
- GENERALS- WEAKNESS
- HEAD - CEREBRAL HEMORRHAGE
- HEAD - PAIN- pressing pain
- LARYNX AND TRACHEA - INFLAMMATION -Larynx
- MIND -INDIFFERENCE - everything, to
- MOUTH- DISCOLORATION- reddish blue
- MOUTH-DISCOLORATION -Tongue- blue- reddish blue
- NOSE- EPISTAXIS
- RESPIRATION- DIFFICULT
- SKIN -FORMICATION
- SKIN- PURPURA- hemorrhagica
- SLEEP- SLEEPINESS
- STOMACH- APPETITE- wanting
- STOMACH- FULLNESS, sensation of
- STOMACH- NAUSEA
- VISION- LOSS OF VISION

Arsenicum iod

- ABDOMEN -ENLARGED – Spleen
- ABDOMEN -ENLARGED -Liver
- CHEST- ANGINA pectoris

- CHEST -INFLAMMATION- Bronchial tubes
- CHEST- PALPITATION of heart
- EXPECTORATION- BLOODY
- EXTREMITIES- NUMBNESS- Lower limbs
- EXTREMITIES- NUMBNESS- Upper limbs
- GENERALS- WEAKNESS
- GENERALS- FORMICATION- External parts
- GENERALS -HEAT- flushes of
- GENERALS -INFLAMMATION- Blood vessels
- HEAD- PAIN- pressing pain
- LARYNX AND TRACHEA - INFLAMMATION- Larynx
- NOSE- EPISTAXIS
- RESPIRATION-DIFFICULT
- RESPIRATION-DIFFICULT- palpitations; during
- SKIN- FORMICATION
- SKIN -PURPURA- hemorrhagica
- SLEEP- SLEEPINESS
- STOMACH- APPETITE- wanting
- STOMACH- FULLNESS, sensation of
- STOMACH- NAUSEA

Aurum met

- ABDOMEN- DROPSY- ascites
- ABDOMEN- ENLARGED- Liver
- CHEST- ANGINA pectoris
- CHEST- PALPITATION of heart
- EXPECTORATION- BLOODY
- EXTREMITIES- FORMICATION
- EXTREMITIES- NUMBNESS- Lower limbs
- EXTREMITIES- NUMBNESS- Upper limbs
- FACE- DISCOLORATION- red- bluish red
- FACE- DISCOLORATION- red- glowing red
- GENERALS - HEAT- flushes of
- GENERALS- WEAKNESS
- GENERALS- DISTENSION blood vessels
- GENERALS- FORMICATION- Extremill parts
- GENERALS -INFLAMMATION- Blood vessels
- HEAD - PAIN - pressing pain
- HEAD -CEREBRAL HEMORRHAGE

- MIND -INDIFFERENCE- everything, to
- NOSE- EPISTAXIS
- RESPIRATION-DIFFICULT
- RESPIRATION-DIFFICULT- palpitations; during
- SKIN- FORMICATION
- SLEEP- SLEEPINESS
- STOMACH -APPETITE -wanting
- STOMACH- NAUSEA
- VISION -COLORS before the eyes - black- spots
- VISION- LOSS OF VISION

Bothrops

- EXTREMITIES- MILK LEG
- EXTREMITIES- NUMBNESS- Upper limbs
- EXTREMITIES-PARALYSIS- hemiplegia
- GENERALS- THROMBOSIS
- ION- LOSS OF VISION
- NOSE- EPISTAXIS
- SKIN -PURPURA- hemorrhagica
- SLEEP- SLEEPINESS
- STOMACH- NAUSEA
- GENERALS- WEAKNESS

Camphor

- ABDOMEN- DROPSY- ascites
- CHEST -INFLAMMATION- Bronchial tubes
- CHEST- ANGINA pectoris
- CHEST- PALPITATION of heart
- EXTREMITIES- FORMICATION
- EXTREMITIES- NUMBNESS-Lower limbs
- EYE -INJECTED -Conjunctiva -dark vessels; full of
- FACE • HEAT • flushes
- FACE- DISCOLORATION- red- glowing red
- FACE- DISCOLORATION- red- bluish red
- GENERALS •HEAT• flushes of
- GENERALS- DISTENSION blood vessels
- GENERALS- FORMICATION- External parts
- GENERALS- WEAKNESS
- HEAD -PAIN -pressing pain
- HEAD- CEREBRAL HEMORRHAGE
- NOSE- EPISTAXIS
- RESPIRATION-DIFFICULT

- SLEEP- SLEEPINESS
- STOMACH- APPETITE- wanting
- STOMACH- FULLNESS, sensation of
- STOMACH- NAUSEA
- VISION- COLORS before the eyes- black- spots
- VISION- LOSS OF VISION

Carboneum sulph

- ABDOMEN - DROPSY - ascites
- CHEST- HEMORRHAGE of lungs
- CHEST -INFLAMMATION- Bronchial tubes
- CHEST- PALPITATION of heart
- EXPECTORATION- BLOODY
- EXTREMITIES- FORMICATION
- EXTREMITIES- MILK LEG
- EXTREMITIES- NUMBNESS- Lower limbs
- EXTREMITIES- NUMBNESS- Upper limbs
- EXTREMITIES- PARALYSIS- hemiplegia
- EYE -INJECTED -Conjunctiva -dark vessels; full of
- FACE- HEAT- flushes
- GENERALS- DISTENSION blood vessels
- GENERALS- FORMICATION- External parts
- GENERALS -HEAT- flushes of
- GENERALS- WEAKNESS
- HEAD- PAIN- pressing pain
- LARYNX AND TRACHEA - INFLAMMATION- Larynx
- NOSE- EPISTAXIS
- RESPIRATION-DIFFICULT
- SKIN- FORMICATION
- SLEEP- SLEEPINESS
- STOMACH -APPETITE - wanting
- STOMACH- FULLNESS, sensation of
- STOMACH- NAUSEA
- VISION- LOSS OF VISION
- VISION- SCOTOMA

Carbo veg

- ABDOMEN- ENLARGED- Liver
- ABDOMEN- ENLARGED- Spleen
- ABDOMEN- ULCERS
- CHEST- ANGINA pectoris
- CHEST- HEMORRHAGE of lungs

- CHEST -INFLAMMATION- Bronchial tubes
- CHEST- PALPITATION of heart
- EAR- NOISES in- buzz.ing- vertigo;with
- EXPECTORATION- BLOODY
- EXTREMITIES - NUMBNESS - Lower limbs
- EXTREMITIES- NUMBNESS- Upper limbs
- FACE- DISCOLORATION- red- bluish red
- FACE- DISCOLORATION- red- glowing red
- FACE- DISCOLORATION- red- Lips
- GENERALS- THROMBOSIS
- GENERALS- DISTENSION blood vessels
- GENERALS- FORMICATION- External parts
- GENERALS -HEAT- flushes of
- GENERALS -INFLAMMATION- Blood vessels
- GENERALS- WEAKNESS
- HEAD - PAIN - pressing pain
- HEAD -CEREBRAL HEMORRHAGE
- LARYNX AND TRACHEA - INFLAMMATION- Larynx
- MIND - INDIFFERENCE- everything , to
- NOSE- EPISTAXIS
- RESPIRATION-DIFFICULT
- RESPIRATION-DIFFICULT- palpitations; during
- SKIN- FORMICATION
- SKIN- PURPURA- hemorrhagica
- SLEEP - SLEEPINESS
- STOMACH- APPETITE- wanting
- STOMACH- FULLNESS,sensation of
- STOMACH- NAUSEA
- VISION -COLORS before the eyes - black- spots

Kali carb

- ABDOMEN- DROPSY- ascites
- ABDOMEN- ULCERS
- CHEST- HEMORRHAGE of lungs
- CHEST -INFLAMMATION- Bronchial tubes
- CHEST- PALPITATION of heart
- EXPECTORATION-BLOODY
- EXTREMITIES- FORMICATION
- EXTREMITIES- NUMBNESS-Lower limbs
- EXTREMITIES- NUMBNESS-Upper limbs

- EYE -INJECTED -Conjunctiva -dark vessels; full of
- GENERALS- FORMICATION- External parts
- GENERALS -HEAT- flushes of
- GENERALS- WEAKNESS
- HEAD -PAIN -pressing pain
- MIND -INDIFFERENCE- everything, to
- NOSE-EPISTAXIS
- RESPIRATION-DIFFICULT
- SLEEP- SLEEPINESS
- STOMACH- APPETITE- wanting
- STOMACH- FULLNESS, sensation of
- STOMACH- NAUSEA
- VISION- LOSS OF VISION

Kreosote

- CHEST- HEMORRHAGE of lungs
- CHEST -INFLAMMATION- Bronchial tubes
- CHEST- PALPITATION of heart
- EAR- NOISES in- buzzing- vertigo; with
- EXPECTORATION- BLOODY
- EXTREMITIES- MILK LEG
- EXTREMITIES- NUMBNESS - Upper limbs
- EXTREMITIES- NUMBNESS- Lower limbs
- EXTREMITIES- VARICES- Legs- inflamed
- FACE - HEAT- flushes
- FACE- DISCOLORATION- red- Lips
- GENERALS - HEAT- flushes of
- GENERALS- DISTENSION blood vessels
- GENERALS- FORMICATION- External parts
- GENERALS -INFLAMMATION- Blood vessels
- GENERALS- WEAKNESS
- HEAD - PAIN- pressing pain
- LARYNX AND TRACHEA - INFLAMMATION- Lar
- MOUTH- DISCOLORATION- Gums- bluish red
- NOSE- EPISTAXIS
- RESPIRATION-DIFFICULT
- SLEEP- SLEEPINESS
- STOMACH -APPETITE -wanting
- STOMACH- FULLNESS, sensation of
- STOMACH- NAUSEA

- VISION- LOSS OF VISION

Lachesis

- ABDOMEN- DROPSY- ascites
- ABDOMEN -ENLARGED -Liver
- ABDOMEN -ENLARGED -Spleen
- ABDOMEN- ULCERS
- CHEST -ANGINA pectoris
- CHEST- HEMORRHAGE of lungs
- CHEST -INFLAMMATION- Bronchial tubes
- CHEST- PALPITATION of heart
- EXPECTORATION -BLOODY
- EXTREMITIES- FORMICATION
- EXTREMITIES- MILK LEG
- EXTREMITIES- NUMBNESS- Upper limbs
- EXTREMITIES- PARALYSIS- apoplexy; after
- EXTREMITIES- PARALYSIS- hemiplegia
- EYE -INJECTED- Conjunctiva- dark vessels; full of
- FACE- DISCOLORATION- red- bluish red
- FACE- DISCOLORATION- red- Lips
- FACE- HEAT- flushes
- GENERALS - HEAT- flushes of
- GENERALS- DISTENSION blood vessels
- GENERALS -FORMICATION -External parts
- GENERALS -INFLAMMATION -Blood vessels
- GENERALS- THROMBOSIS
- GENERALS- WEAKNESS
- HEAD -CEREBRAL HEMORRHAGE
- HEAD-PAIN·pressing pain
- LARYNX AND TRACHEA - INFLAMMATION -Larynx
- MIND - INDIFFERENCE -everything, to
- MOUTH-DISCOLORATION- Gums- bluish red
- NOSE- EPISTAXIS
- RESPIRATION -DIFFICULT- palpitations; during
- RESPIRATION-DIFFICULT
- SKIN -FORMICATION
- SKIN- PURPURA- hemorrhagica
- SLEEP- SLEEPINESS
- STOMACH- APPETITE- wanting

- STOMACH- FULLNESS, sensation of
- STOMACH- NAUSEA
- VISION- LOSS OF VISION

Acid phos

- ABDOMEN- DROPSY- ascites
- ABDOMEN -ENLARGED – Spleen
- CHEST- HEMORRHAGE of lungs
- CHEST -INFLAMMATION- Bronchial tubes
- CHEST- PALPITATION of heart
- EAR- NOISES in- buzzing- vertigo; with
- EXPECTORATION- BLOODY
- EXTREMITIES- FORMICATION
- EXTREMITIES- NUMBNESS- Lower limbs
- EXTREMITIES- PARALYSIS- hemiplegia
- FACE- HEAT- flushes
- GENERALS- WEAKNESS
- GENERALS- DISTENSION blood vessels
- GENERALS- FORMICATION- External parts
- GENERALS -HEAT- flushes of
- HEAD -PAIN -pressing pain
- LARYNX AND TRACHEA - INFLAMMATION- Larynx
- MIND -INDIFFERENCE- everything, to
- NOSE- EPISTAXIS
- RESPIRATION-DIFFICULT
- SKIN - PURPURA - hemorrhagica
- SKIN- FORMICATION
- SLEEP- SLEEPINESS
- STOMACH- APPETITE- wanting
- STOMACH- FULLNESS, sensation of
- STOMACH- NAUSEA
- STOMACH- VOMITING- blood, at sight of
- VISION- COLORS before the eyes- black- spots
- VISION- LOSS OF VISION

Plumbum met

- ABDOMEN- DROPSY- ascites
- ABDOMEN- ENLARGED- Liver
- ABDOMEN- ENLARGED- Spleen
- ABDOMEN- ULCERS
- CHEST- ANGINA pectoris
- CHEST- HEMORRHAGE of lungs

- CHEST -INFLAMMATION- Bronchial tubes
- CHEST- PALPITATION of heart
- EXPECTORATION- BLOODY
- EXTREMITIES- FORMICATION
- EXTREMITIES- NUMBNESS- Lower limbs
- EXTREMITIES- NUMBNESS- Upper limbs
- EXTREMITIES - PARALYSIS - hemiplegia
- EXTREMITIES- PARALYSIS- apoplexy; after
- FACE - HEAT -flushes
- GENERALS- DISTENSION blood vessels
- GENERALS- FORMICATION- External parts
- GENERALS -HEAT- flushes of
- GENERALS- WEAKNESS
- HEAD- CEREBRAL HEMORRHAGE
- HEAD- PAIN- pressing pain
- NOSE- EPISTAXIS
- RESPIRATION-DIFFICULT
- RESPIRATION-DIFFICULT- palpitations; during
- SKIN- FORMICATION
- SLEEP - SLEEPINESS
- STOMACH -APPETITE -wanting
- STOMACH -FULLNESS, sensation of
- STOMACH- NAUSEA
- VISION- LOSS OF VISION

Secale cor

- 11. RESPIRATION-DIFFICULT
- ABDOMEN- ENLARGED- Liver
- CHEST- HEMORRHAGE of lungs
- CHEST -INFLAMMATION- Bronchial tubes
- CHEST- PALPITATION of heart
- EXPECTORATION- BLOODY
- EXTREMITIES- FORMICATION
- EXTREMITIES- NUMBNESS- Lower limbs
- EXTREMITIES- NUMBNESS- Upper limbs
- EXTREMITIES-PARALYSIS- hemiplegia
- EXTREMITIES-PARALYSIS- apoplexy; after
- EYE -INJECTED -Conjunctiva -dark vessels; full of
- GENERALS- WEAKNESS
- GENERALS- DISTENSION blood vessels

- GENERALS- FORMICATION- External parts
- GENERALS- THROMBOSIS
- HEAD -CEREBRAL HEMORRHAGE
- MIND -INDIFFERENCE- everything, to
- NOSE- EPISTAXIS
- SKIN - PURPURA - hemorrhagica
- SKIN- FORMICATION
- SLEEP- SLEEPINESS
- STOMACH- APPETITE- wanting
- STOMACH- FULLNESS, sensation of
- STOMACH- NAUSEA
- VISION- COLORS before the eyes- black- spots
- VISION- LOSS OF VISION

Tabaccum

- ABDOMEN- ENLARGED- Liver
- ABDOMEN- ENLARGED- Spleen
- CHEST- ANGINA pectoris
- CHEST- HEMORRHAGE of lungs
- CHEST-PALPITATION of heart
- EAR- NOISES in- buzzing- vertigo; with
- EXTREMITIES-PARALYSIS- hemiplegia
- FACE- DISCOLORATION- red- glowing red
- GENERALS - FORMICATION -External parts
- GENERALS -HEAT- flushes of
- GENERALS- WEAKNESS
- HEAD -CEREBRAL HEMORRHAGE
- HEAD- PAIN -pressing pain
- LARYNX AND TRACHEA - INFLAMMATION -Larynx
- NOSE- EPISTAXIS
- RESPIRATION-DIFFICULT
- RESPIRATION-DIFFICULT- palpitations; during
- SKIN -FORMICATION
- SLEEP- SLEEPINESS
- STOMACH -APPETITE -wanting
- STOMACH- NAUSEA
- VISION- COLORS before the eyes- black- spots
- VISION- LOSS OF VISION
- VISION- SCOTOMA

Repertory of Polycythemia vera

ABDOMEN - DROPSY – ascites abrot. acet-ac. acon. adon. Agn. alco. all-c. Ambr. Ant-c. APIS APOC. Arg-n. ars-s-f. ARS. asaf. aur-m-n. Aur-m. aur-s. Aur. bell. blatta-a. Bry. cain. calc-sil. Calc. camph. cann-s. Canth. carb-an. carbn-s. Card-m. caust. Chel. Chim. Chin. Chinin-ar. Chinin-s. cinnm. coc-c. Colch. coloc. CON. cop. crot-h. cur. Dig. Digin. Dulc. euph. ferr-ar. ferr. Fl-ac. Graph. guaj. Hell. helon. hep. iod. iris kali-ar. Kali-br. Kali-c. Kali-chl. kali-i. kali-m. kali-p. kali-s. kalm. lach. lact-v. lact. Led. lept. LYC. Mag-m. med. merc-sul. Merc. mill. mur-ac. myric. nat-hchls. nat-m. nux-v. oxyd. Ph-ac. Phos. plb. Prun. ptel. puls. querc-r-g-s. Rhus-t. sabin. sacch. samb. senec. seneg. sep. sil. sol-t-ae. spong. squil. Sulph. TER. Uran-n.

ABDOMEN - ENLARGED – Liver aconin. aesc. agar. aloe anis. ant-t. ars-i. Ars. aur-ar. aur-i. Aur-m. aur-s. aur. bar-m. Bry. bufo Calc-ar. calc-sil. Calc. Carb-v. carc. card-m. Chel. CHIN. chinin-ar. Chion. Cocc. coloc. Con. Dig. eup-per. ferr-ar. ferr-i. ferr-p. Ferr. Fl-ac. glyc. graph. Hep. Hippoz. hydr. lod. kali-br. Kali-c. kali-s. lach. lact. Laur. LYC. mag-c. MAG-M. mang-act. Merc-d. merc-i-r. Merc. mur-ac. Nat-m. NAT-S. Nit-ac. Nux-m. NUX-V. Phos. pin-s. plb. Podo. pop-cand. ptel. sec. sel. senn. sep. sil. stel. sul-i. Sulph. tab. tarax. thuj. Tub. urt-u. vip. zinc-p. Zinc.

ABDOMEN - ENLARGED – Spleen aconin. agar. agn. Anthraci. Aran. ars-br. Ars-i. ars-s-f. Ars. Aur-m. bell-p. brom. calc-ar. calc-i. Calc. Caps. carb-v. card-m. CEAN. cedr. CHIN. chinin-ar. Chinin-s. chion. cimx. Cit-v. Cocc. Con. dros. ferr-act. ferr-ar. ferr-i. Ferr-m. ferr-p. Ferr. grin. Helia. Hippoz. hydr. Ign. IOD. kali-br. kali-m. Lach. laur. leucas-a. luf-b. mag-m. malar. merc-i-r. Nat-m. Nit-ac. nux-m. Nux-v. Op. Ph-ac. Phos. plb-i. plb. polyg-h. Polym. QUERC. Ran-s. rhus-t. rub-t. ruta saroth. squil. succ. Sul-ac. sul-i. Sulph. tab. tinas. tub. Urt-u. xanrhi.

ABDOMEN – ULCERS Arg-n. ARS. bar-m. calc-p. Calc. CARB-V. carc. chin. Coloc. cupr. Hep. kali-ar. Kali-bi. lach. Lyc. merc. NIT-AC. Phos. plb. ran-b. Sil. sulph. TER.

CHEST - ANGINA pectoris acet-ac. acetylch-m. acon-ac. Acon. adren. Agar. AM-C. Aml-ns. anac. ang. APIS arg-cy. ARG-N. ARN. ars-i. ARS. asaf. asar. Asim. AUR-M. AUR. Bar-m. bell. bism. CACT. calc-hp. camph. Carb-v. caust. cere-b. Chel. chim-m. chin. CHININ-AR. Chinin-s. chlol. chr-ac. chr-o. Cimic. cit-ac. coca cocain. conv. crat. crot-h. crot-t. cupr-act. Cupr-ar. Cupr. des-ac. Dig. Dios. diph. elaps foll. form-ac. fuma-ac. gels. glon. haem. Hep. hist. Hydr-ac. ign. iod. ip. Jug-c. Kali-c. kali-i. kali-p. Kalm. Lach. lact-v. lact. LAT-M. Laur. lil-t. Lith-c. lob. Lyc. lycps-v. Mag-p. magn-gr. mal-ac. MED. merc. morg-g. morg-p. morph. Mosch. mucor NAJA nat-i. nat-n. nat-ns. nat-pyru. Nux-v. olnd. OX-AC. penic. petr. PHOS. phyt. pip-n. pitu-gl. plb. prot. prun. psor. RHUS-T. sacch-l. samb-c. Samb. saroth. scol. sep. SPIG. spir-aeth-c. SPONG. squil. staph. stict. Stram. stront-c. stront-i. sulph. Syph. Tab. Tarent. thala. Ther. thuj. thy. verat-v. Verat. verb. vib. wies. zinc-val. Zinc.

CHEST - HEMORRHAGE of lungs Acal. Acet-ac. Achil-m. ACON. All-s. aloe alum-sil. Alum. am-c. Anan. Ant-t. Apoc. Aran. arg-n. ARN. ars-s-f. ARS. arum-m. aspar. Bapt. Bell. brom. Bry. bufo CACT. Calc-p. calc-s. calc-sil. Calc. canth. carb-an. carb-v. carbn-s. Card-m. casc. caust. cham. CHEL. CHIN. chinin-ar. chinin-s. chlor. cinnm. Coc-c. cocc. coff. Colch. Coll. con. Cop. Croc. crot-h. cupr-s. cupr. Dig. dros. dulc. elaps Erech. ergot. Erig. Ferr-act. FERR-AR. Ferr-i. ferr-p. FERR. fic-r. fic-v. gelin. Ger. HAM. helx. Hydrin-m. hyos. ign. IP. jug-c. kali-ar. kali-bi. Kali-c. Kali-chl. Kali-i. kali-m. kali-n. kali-p. kali-s. kali-sil. Kreos. Lach. lam. Led. lyc. Lycps-v. mag-c. mag-m. mang. Mangi. meli. Merc-c. merc. MILL. Nat-ar. nat-n. NIT-AC. Nux-m. Nux-v. ol-j. op. Ph-ac. phel. Phos. Plb. Puls. Rhus-t. Sabin. Sang. sarr. SEC. Senec. sep. sil. STANN. staph. Stram. stront-c. stroph-h. Sul-ac. sulph. tab. Ter. tril-p. tub. Urt-u. Verat-v. verat.

CHEST - INFLAMMATION - Bronchial tubes Acet-ac. Acon. AESC. aeth. aether All-c. all-s. aloe alum-p. alum-sil. Alum. Alumn. am-br. am-c. am-caust. am-i. Am-m. am-p. ammc. Ant-c. ant-i. ant-s-aur. ANT-T. Apis Arn. ars-i. ARS. asc-c. Asc-t. Aur-m. bac. bals-p. bar-c. bar-i. BAR-M. bar-s. bell-p. Bell. Benz-ac. blatta-o. brom. BRY. Cact. cadm-met. calc-i. calc-sil. Calc. Camph. Cann-s. cann-xyz. canth. caps. Carb-v. Carbn-s. carc. card-m. Caust. cetr. Cham. Chel. chin. chlol. chlor. Cina Cist. Coc-c. colch. Con. cop. dig. diphtox. DROS. Dulc. erio. eucal. eup-per. euphr. Ferr-i. FERR-P. ferr. Gels. grin. Guaj. hed. HEP. hepat. Hippoz. hist. hydr. Hyos. hyss-o. iber. ign. inul. lod. IP. jab. kali-ar. Kali-bi. Kali-c. Kali-chl. kali-m. kali-n. kali-p. kali-s. kali-sil. Kreos. Lach. laur.

led. linu-c. lob-a. **Lob.** **LYC.** mag-c. manc. mang. meph. **Merc.** myrt-ch. **Naja** naphtin. narc-ps. nat-c. **Nat-m.** **NAT-S.** **Nit-ac.** **Nux-v.** oci-sa. osm. petr. **Ph-ac.** phel. **PHOS.** pin-s. pix **Plb.** podo. **Psor.** pulm-v. **PULS.** pyrog. ran-b. **Rhus-t.** **Rumx.** sabad. sabal samb. **SANG.** sangin-n. sec. **SENEC.** **Seneg.** **Sep.** **SIL.** silphu. **Spig.** **SPONG.** **Squil.** stann-i. **STANN.** staph. stict. stram. streptom. succ-ac. sul-i. **Sulph.** **Ter.** thuj. tub-a. tub. uran-met. uran-n. **Urin.** **Verat.** verb. visc.

CHEST - PALPITATION of heart **Abies-c.** acetan. acon-f. **ACON.** adon. adren. aesc. **Aeth.** **AGAR.** agarin. agn. alco. aloe alst. alum-sil. **Alum.** alumn. **Am-c.** **Am-m.** **Ambr.** **AML-NS.** anac. anemps. ang. anh. ant-c. **Ant-t.** **Apis** apoc. aran-ix. **Arg-met.** **ARG-N.** **Arn.** **ARS-I.** **ARS.** art-v. **Asaf.** asar. asc-t. aspar. aster. atro. aur-ar. aur-i. aur-m-n. **Aur-m.** **AUR.** aven. **Bad.** bapt. **Bar-c.** bar-i. **Bar-m.** bell-p. **Bell.** benz-ac. berb. beryl. **Bism.** bond. borx. **Bov.** **Brom.** **Bry.** bufo but-ac. buth-a. **CACT.** **CADM-S.** **Calc-ar.** calc-f. calc-i. **Calc-p.** calc-s. **CALC.** **Camph.** **Cann-i.** **Cann-s.** canth. **Carb-an.** **Carb-v.** **Carbn-s.** carc. carl. **Caust.** cean. **Cedr.** **Cham.** **Chel.** **CHIN.** **Chinin-ar.** **Chinin-s.** chlol. cic. cimid. cit-v. clem. cob-n. coc-c. **Coca** **Cocc.** coff-t. coff. coffin. **COLCH.** **Coll.** coloc. colocin. **CON.** conv. convo-s. cop. corn. cortico. crat. croc. **Crot-c.** **Crot-h.** crot-t. cupr-ar. cupr-s. **Cupr.** **Cycl.** cyt-l. der. **DIG.** digin. **Dios.** dulc. **Elaps** epiph. eucal. **Eup-per.** eup-pur. euphr. eupi. fago. **Ferr-ar.** **Ferr-i.** **Ferr-p.** **Ferr.** flor-p. form. gast. **Gels.** gins. **GLON.** gran. **Graph.** grat. **Guaj.** guat. haem. halo. ham. hed. hell. **Hep.** hera. hist. hydr-ac. **Hydr.** **Hyos.** hyper. iber. **Ign.** indg. **IOD.** ip. jab. **Kali-ar.** **Kali-bi.** kali-br. **KALI-C.** **Kali-chl.** kali-cy. **Kali-fcy.** **Kali-i.** **Kali-n.** **Kali-p.** **Kali-s.** **KALM.** kiss. **Kola** kreos. **Lac-d.** **LACH.** lact. **Laur.** **Lec.** led. lepi. **Lil-t.** **lipp.** lith-c. **Lob.** luf-op. **LYC.** **Lycps-v.** lyss. m-ambo. m-arct. m-aust. macro. **Mag-c.** **Mag-m.** mag-s. **Manc.** mand. **Mang.** **Med.** **Meli.** meny. **Merc-c.** merc-cy. **MERC.** **Merl.** mez. **Mill.** morph. **Mosch.** mur-ac. murx. mygal. **NAJA** **NAT-AR.** **NAT-C.** nat-i. **NAT-M.** **NAT-P.** **Nit-ac.** nit-m-ac. nit-s-d. nitro-o. **Nux-m.** **NUX-V.** ol-j. **OInd.** **Op.** osm. **Ox-ac.** par. petr. **PH-AC.** phase-xyz. **Phase.** **PHOS.** **Phys.** pic-ac. pin-s. pip-n. **Plat.** **Plb.** plumbg. **Podo.** **Prun.** **Psor.** **PULS.** pyrog. ran-s. raph. rauw. rein. rhod. rhus-r. **Rhus-t.** rhus-v. **Rumx.** **Ruta** sabad. sabin. samb. sang. saroth. **Sars.** **Sec.** sel. seneg. **SEP.** **Sil.** sol-t-ae. **SPIG.** spira. **SPONG.** squil. stann. staph. **Stram.** **Stront-c.** stroph-h. stry-p. stry. **Sul-ac.** sul-i. sulo-ac. **SULPH.** sumb. **TAB.** tarax. tarent. tell. tep. ter. thea **Ther.** **Thuj.** thyr. trach. tril-p. trinit. tub. upa. valer. **Verat-v.** **VERAT.** verb. vesp. viol-o. **Viol-t.** visc. wies. x-ray yohim. zinc-i. zinc-p. **Zinc.**

EAR - NOISES in - buzzing - vertigo; with alum. **Arg-n.** **arn.** **Ars.** bell. benz-ac. cann-i. carb-v. chen-a. chin. **CHININ-S.** **Cic.** euph. **Gels.** **Glon.** kreos. laur. nat-s. ph-ac. pic-ac. sal-ac. seneg. sil. **Stry.** tab. ther. valer. zinc.

EXPECTORATION – BLOODY **Acal.** acet-ac. **ACON.** aesc. agn. ail. all-s. aloe alum-p. alum-sil. alum. alumn. am-br. **AM-C.** am-m. ambr. anac. **Anan.** anis. ant-c. ant-s-aur. ant-t. **Apis** **Aran.** **Arg-n.** **ARN.** ars-i. ars-s-f. **ARS.** arum-m. asar. aspar. aur-ar. aur-s. aur. bad. bapt. bell-p. **Bell.** beryl. bism. **Borx.** brom. **Bry.** bufo **Cact.** cadm-met. calc-i. calc-p. calc-s. calc-sil. **Calc.** **CANN-S.** **Canth.** caps. carb-an. **Carb-v.** carb-n-h. carb-n-o. **Carbn-s.** **Card-m.** casc. **Cench.** **Cham.** chel. **Chin.** chinin-ar. chlor. cimid. cina cinm. cist. cob. coc-c. coll. **Con.** cop. **Cor-r.** **Croc.** **CROT-H.** **Crot-t.** **Cupr.** cur. daph. der. **Dig.** dios. **Dros.** **Dulc.** elaps erig. eug. euphr. **Ferr-ar.** **Ferr-i.** **FERR-P.** **FERR.** fl-ac. gamb. gels. graph. guaj. **Ham.** hell. helx. hep. hippoz. hydr-ac. **Hyos.** ind. iod. **IP.** jug-c. kali-ar. **Kali-bi.** kali-c. kali-i. kali-m. kali-n. kali-p. kali-perm. kali-s. kali-sil. **Kreos.** lach. lachn. lam. **LAUR.** **LED.** **Lyc.** lycps-v. m-ambo. **Mag-c.** mag-m. manc. **Mang.** merc-c. **Merc.** **Mez.** **Mill.** mur-ac. myrt-c. **naja** **Nat-ar.** nat-c. **Nat-m.** nat-p. nat-s. nat-sel. **NIT-AC.** nux-m. nux-v. oena. **Op.** ph-ac. **PHOS.** **Plb.** psor. **PULS.** pyrog. **Rhus-t.** ruta sabad. **Sabin.** sal-ac. sang. sarr. **SEC.** sel. senec. **Sep.** **Sil.** sol-mm. squil. **STANN.** staph. stram. **Sul-ac.** sul-i. **SULPH.** tarax. **Ter.** thlas. thuj. tril-p. tub. vario. verat-v. verat. verb. **Zinc.**

EXTREMITIES – FORMICATION **Acon.** **Agar.** alum-sil. **Alum.** alumn. **Arg-n.** ars-h. ars-s-f. ars. aur. bar-act. **Bar-c.** cact. cadm-s. calc-p. **Camph.** caps. carb-ac. carb-n-s. carl. caust. coloc. crot-c. hep. hipp. hydr-ac. **Ign.** kali-ar. kali-c. kali-sil. lach. **Laur.** **LYC.** mag-c. **Mez.** nat-ar. nux-m. **Nux-v.** **PH-AC.** Phos. pic-ac. plb. psor. **Puls.** **Rhod.** **RHUS-T.** sabad. **SEC.** sil. stram. stront-c. stry. sulph. **TARENT.** teucr. tub. verat. verin. **Zinc.**

EXTREMITIES - MILK LEG **Acon.** **All-c.** ant-c. apis **Arn.** **Ars.** **BELL.** **Bism.** both. **BRY.** **Bufo** calc-f. **CALC.** carb-n-s. **Cham.** **Chin.** crot-h. dig. euph. graph. **Ham.** hep. hippoz. lod. **Kali-c.** kreos. **LACH.** **Led.** **LYC.** merc. **Nat-s.** nux-v. **PULS.** rhod. **RHUS-T.** **Sabin.** **SEP.** **Sil.** **SULPH.** urt-u. verat. vip.

EXTREMITIES - NUMBNESS - Lower limbs acet-ac. acon. agar. ail. aloe alum-p. alum-sil. Alum. alumn. am-c. Ambr. ang. ant-c. ant-t. Apis Arg-met. Arg-n. arn. ars-i. ars-s-f. ars. asaf. asar. aster. aur-ar. aur-s. aur. Bar-c. bell. berb. bov. bufo calc-i. Calc-p. calc-s. CALC. camph. cann-i. Canth. Carb-an. Carb-v. carbn-s. caust. cham. Chel. chin. chinin-ar. Chinin-s. cic. cemic. cocc. colch. coloc. Con. croc. crot-h. cupr-ar. cupr. der. dulc. euph. euphr. ferr. fl-ac. GNAPH. GRAPH. guaj. guare. hyper. ign. iod. kali-ar. Kali-bi. Kali-br. KALI-C. kali-n. kali-p. Kali-s. kali-sil. kreos. lac-c. lact. lat-m. led. Lyc. lyss. m-ambo. m-arct. mang. med. merc-c. Merc. mez. morph. mosch. naja nat-m. nat-s. nit-ac. nux-m. Nux-v. olnd. Onos. op. ox-ac. Petr. ph-ac. Phos. Pic-ac. plan. plat. PLB. psil. psor. PULS. rheum Rhod. Rhus-t. samb. Sec. Sep. sil. Spong. squil. sul-ac. sulph. TARENT. ter. teucr. thuj. thyr. urt-u. Verat. vip.

EXTREMITIES - NUMBNESS - Upper limbs abrom-a. abrot. ACON. aesc. Aeth. agar. ail. allox. alum-p. alum-sil. Alum. Alumn. am-c. am-m. Ambr. amyg. anac. APIS aran. arg-met. arg-n. ars-i. ars-s-f. ars. aster. aur-ar. aur. bapt. Bar-c. bar-i. bar-s. bell. berb. borx. both. Bufo Cact. calc-p. calc. cann-i. canth. caps. Carb-an. Carb-v. carbn-o. CARBN-S. castor-eq. caust. cedr. Cham. chel. chinin-ar. chr-ac. cic. cemic. cinnb. COCC. cod. colch. Con. Croc. Crot-c. cupr-ar. Cupr. Cur. dig. dios. dros. Dulc. euph. euphr. fago. Fl-ac. Gels. glon. GRAPH. Guaj. hell. helo. helodr-cal. Hep. hura hydroph. hyos. hyper. iber. Ign. iod. kali-ar. kali-bi. Kali-c. kali-m. KALI-N. kali-p. Kali-s. kali-sil. kreos. lac-c. Lach. lat-m. led. lepi. lil-t. LYC. lyss. m-ambo. m-arct. m-aust. Mag-m. magn-gr. med. meph. merc-c. merc-i-f. merc. nat-m. nat-p. nat-s. nit-ac. Nux-v. ol-j. Olnd. Onos. OX-AC. Pall. par. petr. Phos. phys. PLAT. Plb. psil. Psor. Puls. pyrog. Rhod. RHUS-T. sarr. Sec. Sep. sil. Spig. stann. stront-c. Sulph. sumb. tarent. tep. teucr. Thuj. urt-u. verat. vip. xan. ZINC.

EXTREMITIES - PARALYSIS - apoplexy; after Alum. anac. apis Bar-c. cadm-s. Caust. Cocc. Crot-c. Crot-h. Cupr. Gels. ip. LACH. Laur. Nux-v. OP. Phos. Plb. sec. stann. staph. Stram. zinc.

EXTREMITIES - PARALYSIS – hemiplegia acon. alum-p. Alum. Anac. Apis arg-n. Arn. ars-s-f. Ars. bapt. bar-c. bar-m. bell. Both. Cadm-s. caj. carbn-s. CAUST. chen-a. chin. coc-c. Cocc. conin. cop. dulc. elaps Graph. hell. hydr-ac. hyos. Kali-c. Kali-i. kali-m. kali-p. Lach. merc. Mur-ac. nat-c. nux-v. Ph-ac. Phos. pic-ac. plb. RHUS-T. Sars. sec. sep. Stann. staph. stram. stront-c. stry-xyz. Sul-ac. syph. tab. thuj. xan.

EXTREMITIES - THROMBOSIS - Lower limbs Apis bufo

EXTREMITIES - VARICES - Legs – inflamed arn. Ars. Calc. Ham. kreos. lyc. lycps-v. Puls. sil. spig. sulph. zinc.

EYE - INJECTED - Conjunctiva - dark vessels; full of aesc. alumn. Apis arg-n. ars-h. ars. bar-m. Bell. Calc-p. Calc. Camph. cann-i. cann-s. Carbn-s. Chinin-s. Chlol. clem. Con. Cop. Crot-c. Crot-t. Euphr. Ferr. Graph. Ham. Hep. Ip. kali-ar. Kali-bi. kali-c. Kali-i. kali-p. kali-s. Lach. lyss. Merc-c. merc. Mez. Morph-s. morph. Nat-ar. NAT-M. Nux-v. Op. phos. podo. sang. sec. sep. Sil. spig. stram. stry. sul-ac. Sulph. tarent. thuj. visc.

FACE - DISCOLORATION - red - bluish red Acon. agar. ANG. Ant-c. Ant-t. Apis Ars. asar. aur. BELL. BRY. camph. CANN-I. carb-ac. carb-v. carl. Caust. Cedr. cham. cic. cina Con. cor-r. Crot-c. Cupr. dig. dros. Dulc. gels. grin. Hep. hydr-ac. hyos. ign. ip. kali-chl. Lach. lyc. meli. merc-c. merc. morph. nux-v. Op. Ox-ac. petr. phel. phos. puls. Samb. sang. spong. staph. stram. stry. verat-v. verat.

FACE - DISCOLORATION - red - glowing red Acon. Apis Arg-n. arn. ASTAC. aur. BELL. bry. Calc. Camph. cann-s. CANTH. Caps. Carb-v. cham. chin. CINA cocc. coff. croc. euph. ferr-s. Ferr. Glon. hell. Hep. ign. inul. kali-c. Lyc. m-arct. mur-ac. nat-c. Nux-v. olnd. Op. Phos. Plat. Ran-b. ruta Sabad. Samb. sil. Stram. sulph. tab. Thuj. Valer.

FACE - DISCOLORATION - red – Lips all-c. aloe Apis ars. arum-t. Aur-m. bar-c. Bell. beryl. bry. calc-caust. carb-v. chin. chlol. cund. kreos. lac-c. Lach. lachn. merc-c. merc. mur-ac. op. phos. psor. puls. rhus-t. Sang. sep. spig. stram. sul-ac. SULPH. thyr. tub-m. Tub. verat.

FACE - DISCOLORATION - red - Mouth - Corners of ars.

FACE - HEAT – flushes **Acon.** **Aesc.** agar. agn. alum. **Ambr.** **Apis** **Arg-met.** ars. asaf. bapt. bell. bufo **Cact.** calc-s. calc. camph. carb-ac. carb-an. **CARB-N-S.** carl. caust. cedr. cench. cham. **Chel.** cic. cimid. **Cist.** clem. coc-c. **Cocc.** coff. colch. crot-c. crot-h. cub. dig. dros. dulc. ferr-ar. ferr-p. ferr. gels. **Glon.** **GRAPH.** helo-s. helo. hep. hydr. inul. **Kali-bi.** kali-br. kali-c. kali-chl. kali-m. kali-p. kali-s. kalm. **Kreos.** **LACH.** lob. **LYC.** lyss. mang. med. meny. mez. mill. nit-ac. nux-v. **Petr.** ph-ac. **Phos.** plb. podo. **Psor.** ptel. puls. ran-s. rauw. rhus-t. sabad. sabin. samb. sang. seneg. **SEP.** **Sil.** spig. spong. **Stann.** stront-c. **Sul-ac.** **SULPH.** tarent. tell. **Ter.** teucr. **Thu.** til. tub. valer. visc. yohim.

GENERALS - DISTENSION blood vessels acon. aesc. agar. alum-p. alum-sil. alum. **Am-c.** ambr. amyloc-m. ant-t. apoc. arg-n. **Arn.** ars. aur-i. **Aur-m.** aur-s. aur. **Bar-c.** **Bar-m.** bar-s. **BELL.** bov. bry. cact. calc-f. calc-p. calc-sil. calc. **Camph.** carb-an. **Carb-v.** **Carbn-s.** caust. celt. **Chel.** **CHIN.** chinin-ar. **Chinin-s.** cic. clem. cocc. coloc. con. **Croc.** cycl. dig. ferr-ar. ferr-i. ferr-p. **FERR.** fl-ac. **Graph.** **Ham.** hep. **HYOS.** kreos. **Lac-d.** lach. laur. **Led.** **Lil-t.** lyc. m-arct. m-aust. mag-c. meny. merl. mosch. nat-c. nat-m. nat-s. nit-ac. **Nux-v.** olnd. op. ph-ac. **Phos.** pilo. **Pib.** **Podo.** **PULS.** rheum rhod. rhus-t. ruta sabin. sars. sec. sel. sep. sil. spig. **Spong.** staph. stront-c. sul-ac. sul-i. **Sulph.** **THUJ.** thymu. vip. zinc.

GENERALS - FORMICATION - External parts abrot. acon-c. acon-f. **ACON.** aconin. aesc. aether agar. agarin. agn. alco. all-s. aloe alum-p. alum-sil. **Alum.** **Alumn.** am-c. am-m. ambr. anac. ang. ant-c. ant-t. apis **Aran.** arg-met. **ARG-N.** **ARN.** ars-i. ars-s-f. ars. arum-t. arund. asaf. asar. aur-ar. aur-s. aur. **Bar-c.** bar-i. bar-m. bar-s. bell. borx. bov. bruc. bry. bufo cadm-met. cadm-s. calad. calc-p. calc. camph. cann-i. cann-s. canth. caps. carb-an. carb-v. carbn-s. card-b. **Carl.** **Castm.** **Caust.** cedr. cham. **Chel.** chin. cic. cina cist. clem. coc-c. **Cocc.** **COLCH.** coloc. con. conin. **Croc.** cupr-ar. cupr-s. cur. dros. dulc. evon. euphr. fago. ferr-ma. ferr. fl-ac. gamb. gels. gent-c. **Gran.** graph. guaj. guare. ham. hep. hist. hydr-ac. hyos. **Hyper.** ign. iod. ip. kali-ar. **Kali-br.** **Kali-c.** kali-chl. kali-m. kali-n. kali-sil. **Kalm.** kreos. lach. laur. led. **Lyc.** m-ambo. **M-arct.** m-aust. mag-c. **Mag-m.** mang. **Med.** merc-c. merc-i-r. **Merc.** **Mez.** morph. mosch. mur-ac. nat-ar. **Nat-c.** **Nat-m.** nat-p. nat-sil. nit-ac. nit-s-d. nux-m. **NUX-V.** oena. ol-an. ol-j. olnd. onos. op. osm. pall. par. petr. **Ph-ac.** **Phos.** **Pic-ac.** **PLAT.** plb. **Puls.** **Ran-b.** ran-s. rheum **Rhod.** **RHUS-T.** rumx. **Sabad.** sabin. samb. sang. sars. **SEC.** sel. seneg. **SEP.** sil. **SPIG.** spong. **Squill.** stann. staph. stram. stront-c. sul-ac. sul-i. **Sulph.** tab. tarax. **Tarent.** tell. teucr. thuj. tub. urt-u. valer. vario. verat. verb. viol-t. **Visc.** zinc-p. **Zinc.**

GENERALS - HEAT - flushes of acet-ac. **Acon.** aesc. aeth. agar. agn. ail. **All-c.** **Aloe** alum-p. alum-sil. alum. **Alumn.** am-c. am-m. ambr. **AML-NS.** ang. ant-c. ant-t. apis apoc. aran-ix. **Arg-n.** arist-cl. **Arn.** **Ars-i.** ars-s-f. ars. arum-t. asaf. asar. aur. bapt. bar-act. bar-c. bar-s. **Bell.** berb. bism. bol-la. bor-ac. borx. bov. brom. bruc. bry. bufo buth-a. **Cact.** calc-f. calc-i. **Calc-s.** calc-sil. **CALC.** camph. cann-s. canth. carb-an. **Carb-v.** carbn-dox. **Carbn-s.** **Carl.** **CAUST.** cedr. cench. **Cham.** chel. chim. **Chin.** chinin-s. **Cimid.** cimx. **Cina** clem. **COCC.** coff. **Colch.** coll. coloc. con. corn. **Croc.** **Crot-h.** **Crot-t.** cupr-am-s. cupr. cyt-l. dig. dros. dulc. **Elaps** erech. ery-a. eucal. eup-per. euphr. fago. ferr-ar. ferr-i. ferr-p. **Ferr.** fl-ac. flor-p. frax. **Gamb.** **GELS.** **GLON.** **Graph.** hell-o. helon. hep. hura hydr-ac. hyos. **IGN.** lod. ip. **Jab.** jug-r. kali-ar. **Kali-bi.** **KALI-C.** **Kali-i.** kali-n. **Kali-p.** **Kali-s.** kali-sil. kiss. **Kreos.** lac-ac. **LACH.** lachn. laur. lil-s. lipp. lob. **LYC.** lyss. m-arct. m-aust. mag-c. mag-m. manc. **MANG.** med. meny. merc-i-r. **Merc.** mit. morph. mosch. nat-ar. nat-c. nat-m. nat-p. **NAT-S.** **NIT-AC.** nit-s-d. **Nux-v.** ol-an. ol-j. olnd. op. **Ov.** **Ox-ac.** **Petr.** ph-ac. **PHOS.** pip-m. **PLAT.** plb. podo. psil. **PSOR.** ptel. **PULS.** ran-b. raph. **Rhus-t.** rumx. ruta sabad. sabin. sal-ac. samb. **Sang.** seneg. **SEP.** **Sil.** sol-a. spig. **Spong.** stann. staph. **Stram.** **Stront-c.** **SUL-AC.** **SUL-I.** **SULPH.** **SUMB.** tab. tanac. **Ter.** teucr. **THUJ.** thyr. til. trom. **TUB.** valer. vesp-xyz. viol-t. vip. voes. **Xan.** yohim. zinc-p. zinc.

GENERALS - INFLAMMATION - Blood vessels acon. **Ant-t.** apis **ARN.** ars-i. **ARS.** aur. **BAR-C.** **BELL.** bufo calc. canth. carb-v. cham. chin. **Cupr.** **Ham.** hell. **Kali-c.** kreos. lach. lyc. nux-v. **Puls.** rhus-t. sep. sil. spig. **SULPH.** thuj. **Verat-v.** **VERAT.** **VIP.** zinc.

GENERALS – THROMBOSIS acetan. am-caust. **Apis** **arn.** **Ars.** **Both.** calc-ar. carb-v. cortico. **Crot-h.** ham. **Kali-chl.** **Kali-m.** lach. **Nat-s.** quinhidr. sec. **Vip.**

GENERALS – WEAKNESS abies-c. abies-n. abrom-a. abrot. absin. **Acet-ac.** Acetan. acon-c. acon-f. **Acon.** Adon. adox. adren. aesc-g. aesc. **Aeth.** aether agar-cpn. agar-em. agar-pa. **Agar-ph.** agar-pr. agar-st. agar. **Agn.** ail. alco. **Alet.** alf. all-c. all-s. allox. **Aloe** alst-s. alst. alum-p. alum-sil. **Alum.** alumn. am-br. **AM-C.** am-caust. am-m. **Ambr.** **Aml-ns.** ammc. amph. amyg. **ANAC.** **Anag.** anan. **Ang.** anil. **Ant-ar.** **Ant-c.** ant-m. ant-o. **ANT-T.** anth. anthraci. anthraco. **Antip.** aphis **APIS** apoc-a. apoc. apom. aq-pet. aral. aran-sc. **Aran.** arg-cy. **ARG-MET.** **Arg-n.** arist-cl. **ARN.** ars-h. ars-i. **Ars-met.** ars-s-f. ars-s-r. **ARS.** arum-d. arum-i. arum-m. arum-t. asaf. asar. asc-t. asim. aspar. astac. aster. atha. atro. aur-ar. aur-fu. aur-m-n. **Aur-m.** aur-s. **Aur.** **Aven.** **Bals-p.** **BAPT.** bar-act. **BAR-C.** bar-i. **Bar-m.** bart. bell-p. bell. ben-n. ben. **Benz-ac.** berb. berbin. beryl. bism-o. **Bism.** **Bol-la.** bol-s. borx. **Both.** bov. brach. **BROM.** bruc. brucin. **Bry.** bufo buni-o. buth-a. **Cact.** cadm-met. cadm-s. cain. caj. calad. calc-ar. calc-caust. calc-hp. **CALC-I.** calc-m. calc-p. calc-s. calc-sil. **CALC.** **Camph.** cann-i. cann-s. **Canth.** canthin. caps. car. **CARB-AC.** **Carb-an.** carb-v. carbn-chl. carbn-h. carbn-o. **Carbn-s.** card-m. **Carl.** casc. cass. castm. castn-v. **Caul.** **Caust.** cedr. cench. cent. cere-b. cerv. **Cham.** chap. **CHEL.** chelo. **Chim.** **CHIN.** chinin-ar. **Chinin-fcit.** **CHININ-S.** chion. chl. chl. chl. chr-ac. **Cic.** cich. cimic. cimx. **Cina** cinnb. cinnm. cist. cit-l. cit-v. **Clem.** cob-n. cob. coc-c. **COCA** **Cocc.** coch. cod. **Coff.** **COLCH.** colchin. coll. coloc. colocin. com. **CON.** conin-br. conin. conv. cop. corian-s. corn-a. corn. cortico. cortiso. cot. crat. croc. **Crot-c.** **Crot-h.** **Crot-t.** cub. culx. cupr-act. **Cupr-ar.** cupr-s. **Cupr.** cur. **Cycl.** cypr. cyt-l. **Daph.** der. dica. **DIG.** **Digin.** digox. dios. dip. diph. dir. dor. **Dros.** dubo-m. **Dulc.** **Echi.** elat. equis-h. erig. ery-a. ery-m. eryt-j. esch. eucal. eug. eup-per. eup-pur. euph-a. euph-c. euph-hy. euph-ip. euph. euphr. eupi. fab. fago. fagu. ferr-ar. **FERR-I.** **FERR-M.** ferr-ma. **Ferr-p.** ferr-pic. ferr. fic-r. fil. **Fl-ac.** flor-p. **Form.** frag. franz. gad. gal-ac. galeg. **Gamb.** gast. **GELS.** gent-l. gent-q. get. gins. glon. glyc. **Glycyr-g.** goss. gran. **GRAPH.** grat. guaj. guan. guar. guare. hall **Ham.** hedeo. hell-o. **Hell.** helo. helodr-cal. helon. **HEP.** hera. **Hipp.** hir. hist. home. hura **Hydr-ac.** **Hydr.** **Hydr.** hydroph. **HYOS.** hyosin. **Hyper.** iber. **Ign.** ind. indg. **IOD.** **Ip.** **Irid-met.** iris jab. jal. jasm. jatr-c. jug-c. jug-r. juni-v. **KALI-AR.** **Kali-bi.** **Kali-br.** **KALI-C.** kali-chl. kali-cy. **KALI-FCY.** **Kali-i.** kali-m. kali-n. kali-ox. **KALI-P.** kali-perm. kali-s. kali-sil. kali-sula. kali-t. **KALM.** kino kiss. kola kou. kreos. kres. lac-ac. **Lac-c.** **Lac-d.** **LACH.** lachn. lact. lam. lapa. lat-k. lat-m. **LAUR.** **LEC.** led. lepi. lept. lev. lil-s. lil-t. lim. lina. linu-c. lipp. lith-c. lith-chl. lob-c. lob-p. lob-s. lob. lobin. **Lol.** loxo-recl. luf-op. **Lyc.** lycps-v. lyss. m-ambo. m-arct. m-aust. macro. mag-c. mag-f. mag-m. **Mag-p.** mag-s. magn-gr. manc. mand. mang-o. mang. **MED.** mela. meli. menis. meny. meph. merc-br. **MERC-C.** **MERC-CY.** merc-d. merc-i-f. merc-i-r. merc-k-i. merc-meth. merc-ns. merc-sul. **MERC.** merl. mez. mill. mim-p. mit. **Mom-b.** morph. mosch. **MUR-AC.** murx. mygal. **Myric.** nabal. naja napht. narcin. narz. nat-ar. **Nat-c.** **Nat-chl.** nat-f. **NAT-HCHLS.** nat-lac. **NAT-M.** nat-n. **NAT-P.** **NAT-S.** **Nat-sal.** nat-sil. nat-sula. nep. nicc-met. nicc-s. nicc. nicot. **NIT-AC.** nit-m-ac. nit-s-d. nitro-o. nuph. **Nux-m.** **Nux-v.** oena. ol-an. **Ol-j.** **OLND.** onos. op. opun-v. orch. orig. orni. osm. ost. **Ox-ac.** oxyg. paeon. pall. pana. par. parth. paull. ped. **Petr.** **PH-AC.** phal. phel. **PHOS.** **Phys.** physal-al. **Phyt.** **PIC-AC.** pilo. pimp. pip-m. pitu-p. pitu. pix plan. **Plat.** plb-chr. **PLB.** plect. plumbg. podo. polyg-h. polyp-p. **Prim-o.** prun-p. psil. **PSOR.** ptel. puls-n. **Puls.** pulx. pyrog. pyrus rad-br. ran-a. **RAN-B.** ran-s. **Raph.** rat. rham-f. rheum rhod. rhodi. rhus-g. **RHUS-T.** **Rhus-v.** ric. **Rob.** rumx-act. **Rumx.** ruta **Sabad.** sabal sabin. sacch. salin. samb-c. samb. **Sang.** **Sanic.** santin. sapin. **Sarcol-ac.** sarr. **Sars.** **Scor.** scroph-n. scut. **SEC.** **SEL.** senec. **Seneg.** senn. **SEP.** sieg. **SIL.** silphu. sin-n. sium sol-mm. sol-ni. sol-t-ae. sol-t. solid. solin. sphing. spig. spira. spirae. **Spong.** **SQUIL.** **STANN.** **STAPH.** **Stict.** still. **Stram.** stront-c. stroph-h. stry-p. stry. **SUL-AC.** sul-h. sul-i. sulfa. **Sulfon.** sulfonam. **SULPH.** sumb. syph. syzyg. **TAB.** tanac. tang. tann-ac. tarax. tarent-c. **TARENT.** tart-ac. tax. **Tell.** **TER.** teucr. thal. thea **Ther.** **Thuj.** thymol. thyr. til. tox-th. trach. tril-p. trom. **TUB.** tus-p. upa. uran-n. urea ust. uva vac. valer. ven-m. verat-v. **VERAT.** verb. verin. vesp. vib. vichy-g. vinc. viol-o. viol-t. vip. visc. voes. wies. wildb. wye. xan. **Zinc-ar.** zinc-m. zinc-o. zinc-p. **Zinc-pic.** zinc-s. **Zinc.** zing. ziz.

HEAD - CEREBRAL HEMORRHAGE **ACON.** ail. **ANAC.** anthraci. arg-n. **Arn.** **Ars.** **Aster.** **Aur.** **Bar-c.** **BELL.** **BRY.** **CALC.** **Camph.** carb-v. **Chin.** cina **COCC.** **Coff.** con. **Crot-h.** **Cupr.** cur. dig. ferr-p. **Ferr.** form. **GELS.** **GLON.** hell. hydr-ac. **Hyos.** iod. **IP.** **LACH.** laur. lol. **Lyc.** merc. mill. morph. **Nat-m.** nit-ac. **Nux-m.** **Nux-v.** oena. **OP.** ox-ac. **Phos.** pitu-gl. plb. **Puls.** sang. sec. sep. **Sin-n.** stram. tab. **Verat-v.** verat.

HEAD - PAIN - pressing pain **Acon.** **Aesc.** **Aeth.** **Agar.** agn. all-c. allox. aloe alum-p. alum-sil. alum. **Alumn.** **Am-br.** **Am-c.** **Am-m.** ambr. **Anac.** ang. ant-c. **Ant-t.** apis aran. arg-met. **Arg-n.** **Arn.** ars-i. ars. arum-t. **Asaf.** **Asar.** aster. aur-ar. aur-i. aur-s. aur. **Bapt.** bar-c. bar-i. bar-m. bar-s. **BELL.** benz-ac. benzol. berb. **Bism.** borx. bov.

brom. Bry. buth-a. cact. cadm-s. calad. calc-i. calc-p. Calc-s. Calc. Camph. cann-i. cann-s. canth. Caps. carb-ac. Carb-an. CARB-V. CARBN-S. Caust. cham. chel. CHIN. chinin-ar. Chinin-s. chion. Chlol. Cic. cimic. cina cinnb. clem. cob-n. coc-c. Cocc. Coff. colch. Coloc. Con. cor-r. croc. crot-c. crot-h. crot-t. cub. cupr. Cycl. cyt-l. daph. Dig. dios. Dros. dulc. echi. epiph. eug. Evon. Eup-per. Euph. euphr. eupi. ferr-ar. ferr-i. ferr-p. ferr. fl-ac. gamb. gels. GLON. Graph. grat. guaj. Hell. helon. Hep. hipp. hydr-ac. Hyos. hyper. Ign. indg. iod. Ip. iris kali-ar. kali-bi. Kali-c. Kali-i. kali-m. Kali-n. kali-p. Kali-s. kali-sil. kalm. Kreos. LAC-C. LACH. lact. lam. laur. led. Lil-t. lob. Lyc. Lycps-v. Lyss. M-arct. Mag-c. Mag-m. mag-s. mang. meli. Meny. merc-c. merc-i-f. merc-i-r. MERC. merl. Mez. mosch. Mur-ac. myric. nat-ar. nat-c. NAT-M. nat-p. nat-s. nicc. NIT-AC. Nux-m. NUX-V. ol-an. Oln. onos. Op. oreo. osm. par. Petr. Ph-ac. Phos. phyt. pic-ac. pip-m. Plat. Plb. podo. prun. PSOR. ptel. PULS. pyrog. Ran-b. Ran-s. rauw. rheum Rhod. Rhus-t. rhus-v. Ruta Sabad. sabin. Samb. sang. sars. Sel. Seneg. Sep. serp. Sil. Spig. Spong. squil. Stann. Staph. stict. Stront-c. sul-ac. SULPH. tab. tanac. Tarax. Tarent. ter. teucr. ther. Thuj. Trios. valer. verat-v. verat. verb. viol-t. visc. x-ray xan. zinc. zing.

LARYNX AND TRACHEA - INFLAMMATION – Larynx ACON. adren. Aesc. ALL-C. Am-br. am-i. am-m. Ant-c. ant-s-aur. Ant-t. Apis Arg-met. ARG-N. arn. ars-i. Ars. arum-m. arum-t. aur-m. bar-c. BELL. beryl. Brom. bry. Bufo calad. calc-i. calc-s. Calc. cann-xyz. caps. carb-ac. carb-an. Carb-v. carbn-s. Caust. Cham. Chel. chin. Chlor. cina con. Crot-c. Crot-h. cupr. DROS. Dulc. ery-a. eucal. euphr. ferr-p. ferr. GELS. Guaj. HEP. hydr-ac. hyos. ign. influ. lod. Ip. KALI-BI. kali-i. kali-m. Kali-n. kreos. lac-c. Lach. Led. linu-c. luf-op. lyc. mag-c. Mang. mentho. merc-i-r. Merc. mez. mosch. Naja nat-c. nat-i. Nat-m. Nit-ac. Nux-v. par. ph-ac. PHOS. polyg-xyz. Puls. pyrog. Rhus-t. RUMX. sabad. SAMB. Sang. sangin-n. sel. seneg. sep. sil. spig. Spong. squil. Stann. staph. stict. Still. stram. sul-i. Sulph. tab. thuj. tub-a. tub-m. tub. verat. verb. zinc.

MIND - INDIFFERENCE - everything, to acet-ac. Acon. agar. agn. ail. ambr. anac. Apis arg-n. arn. Ars. asaf. Aur-m. Aur. bapt. bell. berb. bism. bov. bry. buth-a. CADM-MET. calc. cann-s. canth. caps. CARB-V. cham. chin. cic. Cimic. Cina con. croc. cypr. cyt-l. dig. fl-ac. Gels. glyc. Hell. hydr-ac. hydr. hyos. ign. indol. kali-ar. kali-chl. lach. lepi. lil-t. Lyc. mag-c. meny. Merc. merl. mez. nat-c. Nat-m. nat-p. nit-ac. Nit-s-d. nux-m. Nux-v. Op. PH-AC. Phos. phyt. Pic-ac. Plat. Puls. Rheum sec. sel. Sep. stann. STAPH. sulph. syph. thuj. THYR. verat. ziz.

MOUTH - DISCOLORATION - Gums - bluish red con. KREOS. lach.

MOUTH - DISCOLORATION - reddish blue ars.

MOUTH - DISCOLORATION - Tongue - blue - reddish blue ars. raph.

NOSE – EPISTAXIS abel. abrot. acet-ac. ACON. adel. Adren. Agar. ail. alco. All-c. allox. aloe alum. Alumn. AM-C. am-caust. am-m. AMBR. ambro. anac. anag. anan. ang. ANT-C. ant-s-aur. ant-t. antip. apis aran. Arg-met. arg-n. ARN. Ars-i. ars-s-f. Ars. arum-t. asaf. asar. astac. aster. aur-ar. aur-i. aur. bals-p. Bapt. Bar-c. Bar-m. bell-p. BELL. benz-ac. Berb. beryl. bism. borx. BOTH. BOV. Brom. Bry. Bufo CACT. cadm-s. calc-i. CALC-P. CALC-S. calc-sil. CALC. camph. Cann-s. canth. Caps. Carb-an. CARB-V. CARBN-S. card-m. Carl. CAUST. cer-s. cere-s. Cham. chel. CHIN. chinin-ar. chinin-m. Chinin-s. chlf. cic. Cina cinch. Cinnb. cinnm. clem. cob-n. cocc. coff-t. coff. colch. coloc. Con. conv. Cop. cor-r. CROC. crot-c. CROT-H. Cupr. cycl. cyt-l. der. Dig. diph. Dros. Dulc. echi. Elaps elat. Erig. euphr. eupi. ferr-act. Ferr-ar. ferr-m. Ferr-p. FERR-PIC. Ferr. fic-r. gal-ac. gamb. gels. Glon. glycyr-g. gran. Graph. HAM. Hecla helia. hell. Hep. hepat. hir. Hydr. hydr. HYOS. ign. ind. indg. lod. IP. kali-ar. Kali-bi. Kali-c. kali-chl. KALI-I. kali-m. Kali-n. kali-p. kali-s. Kreos. Lac-ac. LACH. lachn. lapa. Led. lil-s. lil-t. lob. lol. luf-op. Lyc. Lyss. m-ambo. m-arct. Mag-c. mag-m. mag-s. MED. meli-xyz. MELI. Meny. meph. Merc-c. merc-cy. MERC. merl. Mez. MILL. Mosch. mur-ac. naja nat-ar. Nat-c. nat-hchls. Nat-m. nat-n. Nat-p. nat-s. nat-sal. nicc. NIT-AC. Nux-m. Nux-v. oena. onis. onon. op. orig. osm. ox-ac. par. Petr. Ph-ac. PHOS. phys. phyt. pic-ac. pimp. pin-s. plat. plb. Prun. psil. PULS. pyrog. ran-b. raph. Rat. rauw. Rhod. rhus-g. RHUS-T. rob. Rumx. ruta sabad. SABIN. sal-ac. samb. Sang. santin. sarr. Sars. SEC. sel. senec. seneg. Sep. Sil. sin-n. sol-t-ae. spig. spira. Spong. squil. Stann. staph. stict. stram. stront-c. Sul-ac. SULPH. sumb. syph. tab. tarax. Tarent. tep. Ter. teucr. thlas. Thuj. til. Tril-p. trios. TUB. urt-u. Ust. vac. valer. Verat. vinc. viol-o. vip. visc. wies. zinc.

RESPIRATION - DIFFICULT - palpitations; during acon. am-c. ambr. ars-i. **AUR.** bell. beryl. brom. Bry. Cact. cadm-s. calc-ar. **Calc.** carb-ac. **Carb-v.** caust. chin. Colch. dig. ferr. Glon. glyc. grat. iber. iod. Kali-c. kali-n. kalm. lach. manc. merc-i-f. naja nit-ac. olnd. ox-ac. Phos. plb. Psor. puls. sep. Spig. Spong. stroph-h. tab. verat-v. **Verat.** viol-o. zinc.

RESPIRATION – DIFFICULT abies-c. abies-n. abrot. absin. acet-ac. **Acetan.** Acon-f. Acon. adon. adren. **Aeth.** Agar. Agn. ail. All-c. all-s. allox. aloe alum-sil. alum. alumn. Am-c. am-m. Ambr. aml-ns. **ANAC.** ang. anh. Ant-ar. Ant-c. ant-i. **ANT-T.** **APIS** apoc. Aral. arg-met. Arg-n. Arn. Ars-i. ars-s-f. **ARS.** arum-t. arund. Asaf. Asar. Asc-t. aspar. astac. aur-ar. aur-i. aur-m-n. aur-m. aur-s. Aur. Bac. Bad. bar-c. bar-i. Bar-m. bar-ox-suc. Bell. Benz-ac. beryl. bism. **Blatta-o.** borx. botul. Bov. Brom. **BRY.** bufo buth-a. **CACT.** cadm-met. cain. caj. calad. Calc-ar. Calc-f. calc-i. Calc-p. Calc-s. calc-sil. Calc. Camph. cann-i. cann-s. canth. Caps. carb-ac. carb-an. **CARB-V.** Carbn-o. Carbn-s. Carl. castm. **CAUST.** Cedr. Cench. Cham. **CHEL** chen-a. **CHIN.** Chinin-ar. Chinin-s. chlol. **CHLOR.** Cic. cimic. Cimx. **CINA** cist. Coc-c. Coca Cocc. coff. Colch. coll. Coloc. Con. conv. cop. cor-r. cortiso. cot. Crat. croc. Crot-c. Crot-h. **CROT-T.** Cub. cupr-act. **CUPR-AR.** cupr-n. cupr-s. **CUPR.** cur. Cycl. cyt-l. Dig. dios. dirc. Dros. Dulc. ephe. equis-h. ery-a. eup-per. euph. euphr. Ferr-ar. Ferr-i. Ferr-p. **FERR.** Fl-ac. foll. Formal. Gels. gins. Glon. Graph. Grin. Guaj. ham. Hell. helo. helodr-cal. **HEP.** hippoz. hist. hura hura-c. hydr-ac. hydr. hydrc. hydroph. hyos. hyper. ictod. Ign. indg. lod. **IP.** Iris jab. jatr-c. jug-c. Just. **KALI-AR.** Kali-bi. kali-br. **KALI-C.** Kali-chl. **KALI-I.** kali-m. kali-n. Kali-p. Kali-s. kali-sil. kali-sula. Kalm. kreos. lac-c. **LACH.** Lact. Lat-m. Laur. lec. led. Lil-t. Lith-c. lob-e. **LOB.** **LYC.** Lycps-v. Lyss. M-ambo. m-arct. M-aust. mag-c. mag-m. mag-s. manc. mand. mang. Med. meli. meny. **MEPH.** **MERC-C.** Merc-cy. Merc-pr-r. Merc-sul. Merc. merl. Mez. morph. Mosch. Mur-ac. murx. mygal. **NAJA** Naphiin. nat-ar. Nat-c. nat-f. Nat-m. nat-n. Nat-p. **NAT-S.** nicc. Nit-ac. **NUX-M.** Nux-v. oena. ol-j. **OP.** osm. Ox-ac. oxyd. p-benzq. par. petr. Ph-ac. phel. Phos-pchl. **PHOS.** Phys. Phyt. Plat. Plb. podo. Prun. Psor. ptel. pulm-v. **PULS.** Queb. Ran-b. ran-s. raph. rat. rauw. rheum rhod. Rhus-t. rumx. ruta sabad. sabin. Samb. Sang. sarcol-ac. sarr. sars. scol. Sec. **SEL.** senec. Seneg. Sep. ser-ang. **SIL.** Spig. **SPONG.** **SQUIL.** **STANN.** staph. Stram. stront-c. Stroph-h. stroph-s. **STRY.** sul-ac. sul-i. sulfa. **SULPH.** Sumb. syph. Tab. tarax. **TARENT.** tax. Ter. thuj. thymol. trad. trif-p. tril-p. trinit. Tub. uva valer. verat-v. **VERAT.** vesp. vib. viol-o. viol-t. vip. visc. xan. zinc-p. **Zinc.** zing.

SKIN – FORMICATION acon-f. Acon. aesc. Agar. agn. all-s. alum-p. alum-sil. Alum. am-c. ambr. anac. anh. ap-g. apis Aran. arg-met. Ars-i. ars-s-f. Ars. arund. asaf. aur-ar. aur-s. aur. Bar-c. bar-m. bar-s. bell. borx. bov. bry. bufo buth-a. cadm-s. calad. calc-p. calc-s. calc-sil. calc. calen. cann-i. cann-s. canth. caps. carb-v. Carbn-s. caust. cham. chel. chin. Chinin-ar. cina cist. **COCA** Cocain. Cocc. cod. colch. con. croc. Crot-c. dulc. ferr-p. Ferr. fl-ac. hip-ac. hist. Hyper. ign. lod. kali-c. kali-m. kali-s. Kalm. lach. lat-m. Laur. led. **LYC.** m-ambo. m-arct. m-aust. mag-c. Mag-m. mang. Med. medus. mentho. merc-c. merc. Mez. Morph. mur-ac. nat-ar. Nat-c. Nat-m. nat-p. nit-ac. Nux-v. Olnd. onos. op. osm. pall. Par. **PH-AC.** Phos. Pic-ac. Plat. plb. psor. Puls. Ran-b. ran-s. **RHOD.** **RHUS-T.** rumx. Sabad. **SEC.** sel. Sil. spig. spong. Staph. stram. Sul-ac. sul-i. **SULPH.** tab. tarax. **TARENT.** thuj. tub. Urt-u. valer. Viol-t. Visc. zinc-p. **Zinc.**

SKIN - PURPURA – hemorrhagica aln. Arn. ars-i. ars-s-f. ars. bell. berb. both. bov. bry. Carb-v. chinin-s. chlol. Cimic. cor-r. Crot-h. Cupr. ferr-pic. Ham. hir. hyos. iod. ip. Kali-i. **LACH.** **LED.** merc-c. merc. mill. naja nat-n. nux-v. Ph-ac. **PHOS.** Rhus-t. rhus-v. ruta **SEC.** sil. stram. **SUL-AC.** sulph. **TER.** thlas.

SLEEP – SLEEPINESS abies-c. abies-n. abrot. acon-a. acon-c. acon-f. acon-l. Acon. aconin. adox. aesc. **Aeth.** agar-cpn. agar-cps. agar-pa. agar-ph. agar-pr. Agar. agn. ail. alet. alf. all-c. allox. Aloe alum-p. **ALUM.** am-br. Am-c. am-caust. am-m. ambr. aml-ns. **Ammc.** amyg. Anac. Anag. anan. ang. anh. anil. **ANT-C.** ant-m. **ANT-T.** antip. ap-g. **APIS** apoc-a. Apoc. apom. arg-met. arg-n. Arn. Ars-h. ars-i. ars-met. ars-s-r. **ARS.** arum-m. arum-t. arund. Asaf. asar. asc-c. asc-t. aspar. aster. atro. aur-ar. aur-i. aur-m. aur. **BAPT.** bar-act. Bar-c. Bar-m. bart. **BELL.** ben-n. benz-ac. Berb. beryl. bism. bomb-pr. bond. borx. both. Bov. brach. Brom. bruc. Bry. bufo bufo-s. buth-a. cact. cadm-met. cain. calad. calc-ar. calc-f. Calc-p. calc-s. Calc. calen. Camph. **CANN-I.** cann-s. Canth. caps. carb-ac. carb-an. **CARB-V.** carbn-chl. carbn-dox. carbn-o. **CARB-N-S.** Carl. casc. cass. castm. catal. **CAUST.** cedr. cench. cent. cere-b. cerv. Cham. **CHEL.** chim. **CHIN.** Chinin-ar. chinin-s. chlf. chlol. chlor. chr-ac. cic-m. cic. cich. cimic. Cimx. cina cinch. cinnb. cinm. cist. Clem. cob-n. coc-c. coca Cocc. cod. coff.

Colch. colchin. coll. Coloc. Con. convo-d. convo-s. Cop. Cor-r. corn-f. corn. cot. **CROC.** Crot-c. Crot-h. crot-t. cryp. cupr-act. cupr-ar. cupr. **Cycl.** cyt-l. dat-f. dat-m. **Dig.** digin. diosm. dirc. dros. dub. dubo-h. dubo-m. **Dulc.** echi. elae. elaps emetin. equis-h. ery-a. esch. eucal. eug. **Eup-pur.** euph-hy. **Euph.** euphr. eupi. eys. ferr-ar. ferr-i. ferr-ma. **Ferr-p.** **Ferr.** ferul. fil. **Fl-ac.** form. **Gamb.** gast. **Gels.** gent-l. gins. **Glon.** **Glycyr-g.** gran. **GRAPH.** **Grat.** guaj. guare. guat. **Haem.** ham. hell. **Helon.** **Hep.** hip-ac. hipp. **Hir.** hura hydr-ac. hydr. hydr. **Hyos.** hyosin. hyper. iber. ign. **Ind.** indg. **Indol.** iod. iodof. ip. iris iris-fl. jab. jac-c. jatr-c. jug-c. jug-r. **KALI-AR.** **Kali-bi.** **Kali-br.** **Kali-c.** kali-chl. kali-cy. kali-i. **Kali-m.** **Kali-n.** kali-p. kali-s. kali-tel. kalm. kiss. **Kreos.** lac-c. lac-d. **LACH.** lachn. lact. lath. **Laur.** **Led.** lepi. lil-s. lil-t. lim. lina. linu-c. lipp. lob-c. lob-p. lob-s. lob. lobin. lol. lon-x. luf-op. lup. **Lyc.** lyss. **M-ambo.** **M-arct.** m-aust. **Mag-c.** **Mag-m.** mag-p. mag-s. **Manc.** mand. **Mang.** mangi. mec. med. mela. meph. **MERC-C.** merc-cy. merc-d. merc-i-f. merc-pr-a. merc-sul. **Merc.** **Merl.** mez. mill. mit. morph. **Mosch.** **Mur-ac.** muru. murx. myric. naja narc-ps. narcin. narcot. narz. nat-ar. nat-br. **Nat-c.** **Nat-hchls.** nat-lac. **Nat-m.** **Nat-n.** nat-p. nat-s. nat-sal. nicc. nicot. **Nit-ac.** nit-s-d. nitro-o. **NUX-M.** **NUX-V.** oci-sa. oena. **Ol-an.** olnd. **OP.** osm. ox-ac. pall. pana. **Par.** paull. ped. pert-vc. peti. petr. **PH-AC.** phal. **Phel.** **PHOS.** phys. phyt. **PIC-AC.** picro. pin-s. pip-m. pip-n. plan. plat. **Pib.** plect. plumbg. **PODO.** psil. psor. ptel. puls-n. **PULS.** **Pyrog.** rad-br. ran-b. ran-s. raph. rat. rauw. rham-f. rheum **Rhod.** **Rhus-t.** ric. rob. rosm. rumx. **Ruta** sabad. sabin. **Samb.** sang. santin. sapin. sarcol-ac. saroth. sarr. sars. scor. **Scroph-n.** scroph-xyz. **Sec.** sel. **Senec.** seneg. **Sep.** serp. sieg. **Sil.** sol-mm. sol-ni. sol-ps. solin. sphing. spig-m. spig. spira. spirae. spong. squil. **Stann.** **Staph.** still. **Stram.** stront-c. stry. **Sul-ac.** sul-i. sulfon. **SULPH.** sumb. tab. tanac. tarax. tarent. tax. tep. ter. teucr. thea ther. thev. **THUJ.** thymol. til. tong. trinit. trios. trom. tub. uran-n. valer. verat-v. **Verat.** verb. vesp. vichy-g. viol-o. viol-t. vip-a. vip. visc. voes. wies. x-ray xan. zinc-act. zinc-s. zinc. zing. ziz.

STOMACH - APPETITE – wanting **Abies-n.** abrot. absin. acet-ac. acetan. **Acon.** aesc. aeth. **Agar.** ail. alet. alf. **All-c.** aloe alum-p. **Alum.** am-c. am-m. ambr. **Anac.** ang. anh. anil. **Ant-c.** **Ant-i.** ant-t. **Anthraci.** apis apoc. arg-met. **Arg-n.** arist-cl. **Arn.** ars-br. ars-h. ars-i. **ARS.** arum-t. asaf. **ASAR.** asc-t. aster. aur-m. aur. **BAC.** **Bapt.** **Bar-c.** bar-i. **Bar-m.** bar-s. bell. ben. **Berb.** beryl. bism. **Bol-la.** **Borx.** **Bov.** brach. **Brom.** **Bry.** but-ac. **Cact.** cadm-met. calad. **Calc-ar.** calc-i. calc-p. calc-s. calc-sil. **CALC.** camph. cann-s. canth. caps. **Carb-ac.** **Carb-an.** **Carb-v.** carbn-s. carc. **Card-m.** **Caust.** cench. **CHAM.** **CHEL.** **CHIN.** chinin-ar. chinin-s. chion. **Chlor.** **Cic.** cimid. **Cina** cinnb. clem. cob-n. coca **COCC.** **Coff.** **Colch.** coloc. **Con.** convo-s. cop. cor-r. cortico. croc. crot-t. cund. cupr-ar. cupr-n. cupr. **CYCL.** daph. dig. dros. dulc. echi. echit. elat. eup-per. euph. euphr. **Ferr-ar.** **Ferr-i.** ferr-p. **FERR.** **Fl-ac.** flor-p. galeg. gels. gent-l. glon. glyc. **Glycyr-g.** gran. graph. **Guaj.** guat. gymno. hed. hell-o. hell. helodr-cal. helon. **Hep.** **Hydr.** hydr. hyos. hyper. **Ign.** ind. indg. **lod.** **Ip.** **Iris** jatr-c. jug-c. jug-r. kali-ar. **KALI-BI.** **Kali-br.** kali-c. kali-chl. **Kali-i.** kali-m. **Kali-n.** kali-p. **Kali-s.** kali-sil. kreos. lac-d. lac-f. lach. lact. laur. **Lec.** led. lil-t. lir-o. lob. **LYC.** lyss. m-ambo. m-arct. m-aust. **Mag-c.** mag-m. mag-s. manc. **Mang.** med. **Meph.** **Merc-c.** merc-d. **Merc.** **Mez.** mosch. **Mur-ac.** muru. murx. myric. naja nat-ar. nat-c. nat-f. **NAT-M.** nat-p. nat-s. nicc. nit-ac. **Nux-m.** **NUX-V.** oci-sa. olnd. op. osm. ox-ac. **Petr.** **Ph-ac.** **PHOS.** phyt. pic-ac. pip-m. pisc. plat. **Pib.** **Podo.** prun-v. prun. **Psor.** ptel. **PULS.** ran-b. ran-s. raph. rat. rheum rhod. **RHUS-T.** **Ruta** sabad. **Sabin.** samb. **Sang.** **Sarr.** sars. sec. sel. senec. **Seneg.** **SEP.** **SIL.** sol-t-ae. **Spig.** spong. squil. stann. staph. stram. stront-c. stry-ar. **Stry-p.** **Sul-ac.** sul-i. sulfa. **SULPH.** sumb. sym-r. **Syph.** tab. tarax. tarent. tell. tep. **Ter.** teucr. **Thuj.** trios. trom. tub-a. tub-m. upa. urt-u. vac. valer. vanad. verat. verb. viol-t. vip. xan. yohim. zinc. zing.

STOMACH - FULLNESS, sensation of acon-s. acon. aesc. agar. allox. aloe alum-p. alum. alumn. am-c. am-m. anac. anan. **Ant-c.** ant-t. apis **Arg-n.** arn. ars-i. ars-s-f. ars. asaf. asar. astac. aur-s. bapt. **Bar-c.** bar-i. bar-m. **Bell.** beryl. borx. **Bov.** brach. brom. **Bry.** but-ac. calc-i. **Calc-p.** calc-s. calc-sil. **Calc.** camph. canth. carb-ac. carb-an. **CARB-V.** **CARBN-S.** casc. **Castor-eq.** **CAUST.** cedr. cham. **CHIN.** chinin-ar. **Chinin-s.** cob. coc-c. **Cocc.** coff. **Colch.** **Coloc.** **Con.** corn. crot-t. **Cycl.** daph. dig. **Dulc.** eup-per. eup-pur. euphr. ferr-ar. ferr-i. **Ferr-p.** **Ferr.** **Fl-ac.** flor-p. gent-c. **Graph.** **Grat.** gymno. **Hell.** hep. **Hydr.** hyos. hyper. **Ign.** ind. iod. ip. iris jac-c. kali-ar. kali-bi. kali-br. **KALI-C.** kali-m. **Kali-n.** **Kali-p.** kali-s. kali-sil. **Kreos.** lach. lachn. laur. lec. led. lith-c. **Lob.** **LYC.** m-arct. mag-c. **Manc.** mang. **Merc.** merl. mez. mill. **Mosch.** mur-ac. myric. naja nat-act. **Nat-c.** **Nat-m.** nat-p. **Nat-s.** nicc. nit-ac. **NUX-M.** **Nux-v.** **Ol-an.** **Op.** par. petr. ph-ac. phel. **PHOS.** plat. plb. **Prun.** **Puls.** ran-b. ran-s. raph. rat. **Rheum** **Rhus-t.** **Rob.** rumx. sabad. **Sabin.** sars. **Sec.** sep. sil. sphing. spong. squil. **Stann.** staph. **Sul-ac.** sul-i. **SULPH.** tarent. tell. tep. tril-p. valer. xan. zinc.

STOMACH – NAUSEA absin. acet-ac. acon-l. acon-s. **Acon.** act-sp. adon. adren. **Aesc.** **Aeth.** aether **Agar.** agn. ail. alco. all-c. **All-s.** **Aloe** alum-p. alum-sil. **Alum.** alumn. am-c. **Am-m.** am-p. ambr. aml-ns. **Anac.** anan. ang. **Ango.** anh. **ANT-C.** **ANT-T.** anth. apis apoc-a. apoc. apom. aq-mar. aral. **Aran.** **Arg-met.** **ARG-N.** arist-cl. arn. ars-h. ars-i. **ARS.** arund. asaf. **Asar.** **Asc-c.** astac. aster. atro. aur-i. aur-m-n. aur-s. aur. **Bapt.** **Bar-c.** bar-i. bar-m. bart. bell-p. **BELL.** benz-ac. **Berb.** **Bism.** **Bol-la.** bol-s. bomb-pr. borx. both. **Bov.** brach. brom. brucin. **Bry.** bufo bux. cact. **Cadm-s.** cain. caj. calad. **Calc-p.** **Calc-s.** **Calc.** **Camph.** cann-s. canth. **Caps.** **Carb-ac.** **Carb-an.** **Carb-v.** carbn-dox. **CARBN-S.** **Card-m.** carl. casc. castm. catal. caul. **Caust.** cent. **CHAM.** **Chel.** chen-a. chim-m. **CHIN.** chinin-ar. **Chinin-s.** **Chion.** chlf. **Chr-ac.** chrys-ac. cic-m. **Cic.** **Cimic.** **Cina** cinch. **Cist.** cit-v. clem. cob-n. **COCC.** **Cod.** coff-t. coff. **COLCH.** **Coll.** **Coloc.** com. **Con.** convo-s. cop. cor-r. cori-r. corian-s. **Corn.** croc. **Crot-c.** **Crot-h.** **Crot-t.** **Cub.** cund. **Cupr-ar.** **Cupr-s.** **CUPR.** **Cycl.** daph. delphin. der. **DIG.** digin. digox. dios. diosm. dros. dub. **DULC.** **Echi.** echit. elaps **Elat.** emetin. erech. erig. erio. eryth. eug. euon. **Eup-per.** **Euph.** euphr. eupi. fago. fagu. **Ferr-ar.** ferr-i. ferr-m. **Ferr-p.** ferr-s. **Ferr.** **Fl-ac.** flor-p. **Form.** gal-ac. **Gamb.** gast. **Gels.** genist. gent-c. gent-l. gins. glon. **Gran.** **Graph.** grat. grin. **Guaj.** haem. ham. hed. helia. hell-o. **HELL.** **HEP.** hera. home. hura hura-c. hydr-ac. **Hydr.** hydrc. hydroph. hyos. hyper. iber. ichth. **Ign.** indg. inul. **Iod.** **IP.** **IRIS** **IRIS-FL.** jab. jac-c. jal. jatr-c. jug-r. **KALI-AR.** **Kali-bi.** kali-br. **KALI-C.** kali-chl. kali-cy. kali-i. kali-m. kali-n. kali-p. **Kali-s.** kali-tel. kalm. kiss. kou. kreos. **Lac-ac.** **Lac-c.** lac-d. lacer. **Lach.** lachn. lact. **Laur.** lec. led. lepi. lept. lil-t. lina. linu-c. lipp. lith-c. lob-c. **LOB.** lol. loxo-recl. luf-op. lup. **Lyc.** lyss. m-ambo. m-arct. m-aust. mag-c. **Mag-m.** **Mag-p.** mag-s. maland. manc. mang. med. meny. meph. merc-br. merc-c. merc-cy. **Merc-i-f.** merc-i-r. merc-n. **Merc.** merl. **Mez.** micr. mim-p. mit. mom-ch. morph. **Mosch.** **Mur-ac.** mygal. myric. **Naja** narc-po. narc-ps. narcot. **Nat-ar.** **Nat-c.** nat-f. **NAT-M.** **Nat-p.** nat-s. nicc. **Nit-ac.** nit-s-d. nitro-o. nux-m. **NUX-V.** nyct. oci-sa. oena. **Ol-an.** ol-j. olnd. onis. onos. op. opun-f. opun-xyz. ost. **Ox-ac.** paeon. pall. pana. par. paull. pen. **PETR.** **Ph-ac.** phel. **Phos.** phys. **Phyt.** **Pic-ac.** pico. pitu-p. plan. plat-m-n. **Plat.** plb-tae. **Plb.** plect. plumbg. **Podo.** prin. **Prun.** psil. **Psor.** ptel. **PULS.** pulx. quas. rad-br. ran-a. **Ran-b.** **Ran-s.** **Raph.** rat. rauw. rham-f. **Rheum** **Rhod.** **RHUS-T.** **Rhus-v.** rumx. ruta **Sabad.** sabin. **Samb.** **SANG.** sangin-t. sapin. sarcol-ac. **Sars.** scol. **Sec.** sel. senec. **Seneg.** senn. **SEP.** **SIL.** sin-n. sol-t-ae. sphing. spig. spirae. spong. **Squil.** stach. **Stann.** staph. stram. stront-c. stry. **Sul-ac.** sul-h. sul-i. sulfa. sulo-ac. **SULPH.** sumb. sym-r. syph. **TAB.** **Tarax.** tarent. tart-ac. tax. tep. **Ter.** teucr. **Ther.** **Thuj.** thymol. thyr. til. trach. **Trios.** tub. tus-p. upa. uran-met. uran-n. urt-u. ust. uva **VALER.** **Ven-m.** **Verat-v.** **VERAT.** verb. vesp. vichy-g. vinc. viol-t. vip. wies. wye. x-ray xan. yohim. zinc-fcy. zinc-p. **ZINC.** zing. ziz.

STOMACH - VOMITING - blood, at sight of ph-ac.

VISION - COLORS before the eyes - black – spots acon. agar. am-c. am-m. ammc. arg-n. asc-t. **Aur.** **Bar-c.** bar-s. bell. **Calc.** **Camph.** carb-an. carb-v. chel. chinin-s. chlf. chlor. **Cimic.** cocc. **Con.** cupr-ar. cur. daph. dulc. elaps gels. **GLON.** hell. hyos. **Kali-c.** **Lil-t.** **Lyc.** **Mag-c.** mang. med. meli. nat-c. **NAT-M.** **Nit-ac.** petr. ph-ac. **Phos.** **Psor.** sec. **SEP.** **Sil.** stram. stront-c. syph. tab. thuj. verat.

VISION - LOSS OF VISION **ACON.** aconin. **Agar.** all-c. alum. am-c. ambr. anac. ant-c. ant-t. antip. apis arg-met. arg-n. arn. asaf. asar. aster. aur-ar. **Aur-m.** aur-s. **Aur.** bar-c. **Bell.** berb. **Both.** **Bov.** **Bry.** bufo cact. **Calc.** camph. cann-i. cann-s. caps. carb-an. carbn-o. **Carbn-s.** **Caust.** cent. cham. chel. **Chin.** **Chinin-s.** chlf. chlcl. cic. cimic. clem. cocc. **Con.** croc. crot-c. crot-h. crot-t. cupr-act. cupr. cycl. **Dig.** dros. dulc. elaps eug. eup-per. euph. **Euphr.** eupi. ferr-p. ferr. fil. flor-p. **Gels.** glon. **Graph.** guaj. hell. hep. hura hura-c. hydr-ac. **HYOS.** iod. ip. jug-c. kali-ar. kali-bi. kali-br. kali-c. kali-cy. **Kali-i.** kali-n. kali-sil. kalm. kreos. lac-ac. lac-v. lach. lact. lam. laur. led. lil-t. **Lith-c.** **Lyc.** **Lyss.** mag-c. mag-m. manc. mang. meny. meph. merc-c. **MERC.** mom-b. morph. mosch. mur-ac. naja naptin. nat-c. **Nat-m.** nat-p. nit-ac. nux-m. **Nux-v.** olnd. **Op.** ox-ac. petr. ph-ac. **Phos.** phyt. pitu-p. plat. **Plb-act.** **Plb.** psor. **PULS.** ran-b. raph. rhus-t. rhus-v. russ. **Ruta** sabad. sang. santin. sars. **Sec.** seneg. **Sep.** **SIL.** sol-ni. spig. squil. staph. **STRAM.** stront-c. stry-n. stry. **Sulph.** syph. **Tab.** **Ther.** thuj. valer. vanad. **Verat-v.** verat. verb. vesp. viol-o. vip. zinc-m. zinc.

VISION – SCOTOMA agar. aloe calc-f. carbn-s. ign. tab.

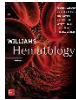
Bibliography



Encyclopedia Homoeopathica



Blood Disorders > POLYCYTHEMIA VERA Current Medical Diagnosis & Treatment 2018



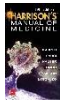
Essential Thrombocythemia > POLYCYTHEMIA VERA Williams Hematology, 9e... Figure 85–4. Distribution of diagnostic hematocrit levels in a cohort of 243 patients with JAK2 V617F -positive disease (essential thrombocythemia or polycythemia vera). PV (Chap. 84) is often associated with thrombocytosis,



Hematologic Emergencies > POLYCYTHEMIA VERA CURRENT Diagnosis & Treatment: Emergency Medicine, 8e



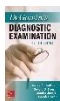
Hematologic Malignancies > POLYCYTHEMIA VERA (PV) Principles and Practice of Hospital Medicine, 2e... TABLE 174-8 Polycythemia Vera Epidemiology The median age of diagnosis: ~ 60 y. Incidence: ~1.9/100,000 per year, in males aged 70-79, 24/100,000 persons. Clinical presentation Symptoms: facial plethora, ruddiness; pruritus, stinging, or a burning...



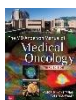
Myeloid Leukemias, Myelodysplasia, and Myeloproliferative Syndromes > POLYCYTHEMIA VERA Harrison's Manual of Medicine, 19e ... (myocardial infarction, stroke, peripheral vascular disease; uncommonly, mesenteric and hepatic). It must be distinguished from other causes of increased RBC mass (Chap. 45). This is most readily done by assaying serum erythropoietin levels. Polycythemia vera is associated with very low erythropoietin...



Myeloproliferative Neoplasms and Myelodysplastic Syndromes > POLYCYTHEMIA VERA Pathophysiology of Blood Disorders, 2e... FIGURE 20-5 Erythropoietin (Epo)-independent growth of erythroid progenitors in polycythemia vera (PV). Bone marrow cells from a normal donor and a patient with PV were plated in semi-solid media in the presence of decreasing amounts of Epo. PV progenitors produce colonies of erythroid...



Nonregional Systems and Diseases > Polycythemia vera DeGowin's Diagnostic Examination, 10e



Philadelphia Chromosome-Negative Myeloproliferative Neoplasms > POLYCYTHEMIA VERA The MD Anderson Manual of Medical Oncology, 3e... Polycythemia vera is a clonal disorder characterized by an accumulation of phenotypically normal red cells, granulocytes, and platelets. The word polycythemia is

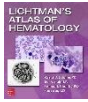
composed of the Greek words poly (“many”), cyt (“cells”), and hemia (“blood”), indicating too many blood cells (red, white...



Polycythemia Vera Quick Medical Diagnosis & Treatment 2017



Primary and Secondary Erythrocytoses > POLYCYTHEMIAS OTHER THAN POLYCYTHEMIA VERA Williams Hematology, 9e..., if indeed needed, because of the leukemogenic risk of the agents that are used in polycythemia vera. This author favors, in most instances, benign neglect, unless specific therapy, such as that seen in erythropoietin-secreting tumors or post–renal transplant erythrocytosis, is available. One should...



Acute and Chronic Leukemias > VI.A.260 Polycythemia Vera Lightman's Atlas of Hematology 2016... VI.A.260 Polycythemia Vera. Polycythemia vera. (A) Marrow film. Hypercellular marrow with erythroid, granulocytic, and megakaryocytic hyperplasia without overt dysmorphia of cells and normal maturation sequence. (B) Marrow film. Prussian blue stain. No iron evident. Absence of iron...



Radar 10